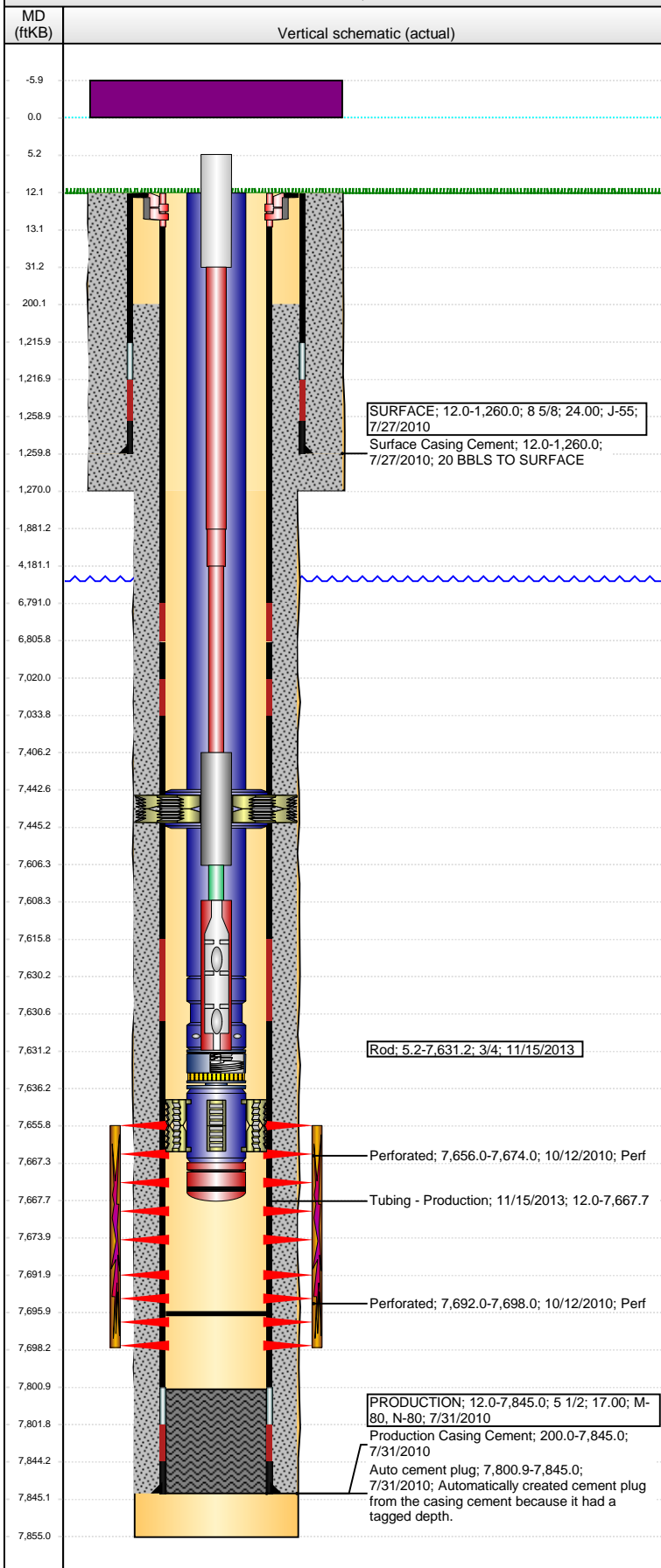


Well Name: MARK PC GK11-02

VERTICAL - ORIGINAL HOLE, 8/24/2015 1:59:15 PM



Well Header

API	Business Unit	District	Well Config
05-123-31756	DJ BASIN	25	VERTICAL
Original KB Elevation (ft)	KB - GL / MSL (ftKB)	Spud Date	P & A Date
5,287.00	12.00	7/27/2010	
Comment			

Directions To Well

CR 95 & CR 130, NORTH 1 MILE, WEST 0.3 MILE, SOUTH INTO

Congressional Location

Quarter 1	Quarter 2	Quarter 3	Quarter 4	Section	Township	Twnshp N...	Range	Rng E/W Dir
		NW	NE	11	11	N	61	W

Bottom Hole Location

North-South Distance (ft)	From N or S Line	East-West Distance (ft)	From E or W Line

Plug Back Total Depths

Date	Depth (ftKB)	Method	Com
7/31/2010	7,800.0	CASING TALLY	FLOAT COLLAR
9/15/2010	7,751.0	CASED HOLE LOG	FILL
11/9/2010	7,798.8	TAG	TBG TALLY MEASUREMENT.
7/15/2011	7,696.0	TAG	BAILED DOWN TO 7696' KB AND COULD NOT BAI...

Wellbore Sections

Section Des	Size (in)	Act Top, MD (ftKB)	Act Btm, MD (ftKB)
SURFACE	12 1/4	12.0	1,270.0
PRODUCTION	7 7/8	1,270.0	7,855.0

Zone Statuses

Zone Name	Status Date	Status	Fluid Type	Job	Prod Method
J SAND	10/27/2010	PR		DRILLING/CO...	

Casing Strings

SURFACE, 1,260.0ftKB

Casing Description	Run Date	OD (in)	Wt/Len (l...	Grade	Top, MD (ft...	MD (ftKB)
SURFACE	7/27/2010	8 5/8	24.00	J-55	12.0	1,260.0

PRODUCTION, 7,845.0ftKB

Casing Description	Run Date	OD (in)	Wt/Len (l...	Grade	Top, MD (ft...	MD (ftKB)
PRODUCTION	7/31/2010	5 1/2	17.00	M-80	12.0	7,845.0

Cement

Description	Top Depth (ftKB)	Bottom Depth (ftKB)
Surface Casing Cement	12.0	1,260.0
Description	Top Depth (ftKB)	Bottom Depth (ftKB)
Production Casing Cement	200.0	7,845.0

Tubing Strings

Tubing Description	Run Date	String...	ID (in)	Wt (lb/ft)	Grade	Len (ft)	Set De...
Tubing - Production	10/22/2010	2 7/8	2.441	6.50	J-55	7,586.95	
Tubing - Production	11/10/2010	2 7/8	2.441	6.50	J-55	7,585.07	
Tubing - Production	7/18/2011	2 7/8	2.441	6.50	J-55	7,655.70	
Tubing - Production	11/15/2013	2 7/8	2.441	6.50	J-55	7,655.70	

Tubing Components

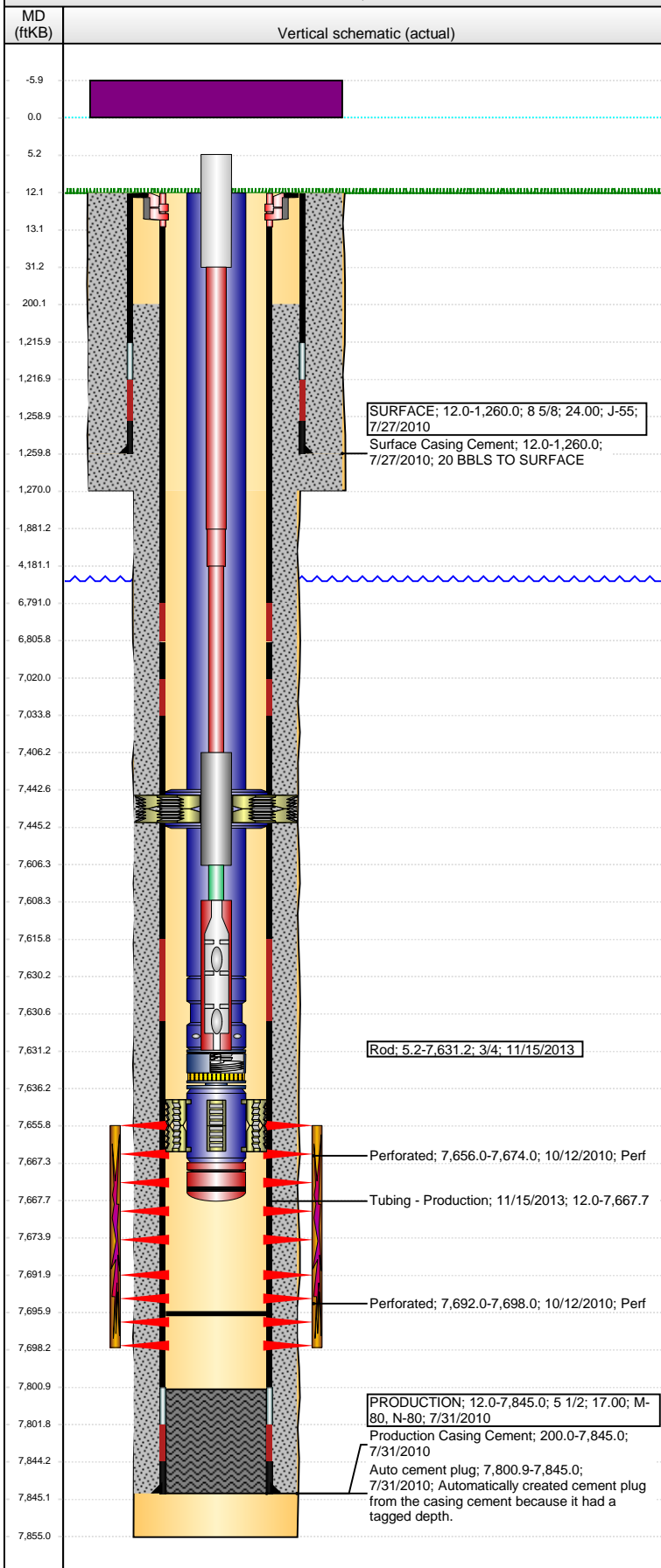
Item Des	OD (in)	Wt (lb/ft)	Grade	Jts	Len (ft)	Btm (ftKB)	Btm (TVD) (ftKB)
Tubing	2 7/8	6.50	J-55	240	7,430.52	7,442.5	
Anchor/catcher	4.99	6.50	J-55	1	2.85	7,445.4	
Tubing	2 7/8	6.50	J-55	6	184.73	7,630.1	
Pump Seating Nipple	2 7/8	6.50	N-80	1	1.10	7,631.2	
Gas separator	2 7/8	6.50	J-55	1	5.10	7,636.3	
Mud Anchor	2 7/8	6.50	J-55	1	31.00	7,667.3	
Bull Plug	2 7/8	6.50	N-80	1	0.40	7,667.7	

Rods & Pumps

Rod Description	Run Date	Set Depth (ftKB)
Rod	11/15/2013	7,631.2
Comment		

Well Name: MARK PC GK11-02

VERTICAL - ORIGINAL HOLE, 8/24/2015 1:59:17 PM



Item Description	OD Nominal (in)	Joints	Length (ft)
Polished Rod	1 1/2	1	26.00
Item Description	OD Nominal (in)	Joints	Length (ft)
Sucker Rod	1	74	1,850.00
Item Description	OD Nominal (in)	Joints	Length (ft)
Sucker Rod	7/8	92	2,300.00
Item Description	OD Nominal (in)	Joints	Length (ft)
Sucker Rod	3/4	129	3,225.00
Item Description	OD Nominal (in)	Joints	Length (ft)
Sinker Bar	1 1/2	8	200.00
Item Description	OD Nominal (in)	Joints	Length (ft)
Pony Rod	3/4	1	2.00
Item Description	OD Nominal (in)	Joints	Length (ft)
Rod Insert Pump	1 1/2	1	23.00

API Pump Type	Barrel Length (ft)	Seating Assembly Type
R	23.00	C

Perforation Data					
Zone	Bnch/St g	Entered Shot Total	Top (ftKB)	Btm (ftKB)	Date
J SAND, ORIGINAL HOLE		72	7,656.00	7,674.00	10/12/2010
J SAND, ORIGINAL HOLE		24	7,692.00	7,698.00	10/12/2010

Stimulations & Treatments		
Date	Zone	Primary Job Type
10/20/2010	J SAND, ORIGINAL HOLE	DRILLING/COMPLETION - ORIGINAL

Technical Result	Tech Result Details	Tech Result Note
Success	According to Plan	

Comment
(J-SAND): REVERSE STEP RATE RESULTS, ISDP = 1623, 5 MIN = 1115 PSI, 10MIN = 730, 15 MIN = 442. PERFS OPEN = 25, NWB = 151 PSI, PERF FRIC = 197 PSI, TOTAL = 200. HAD PROBLEMS WITH FDP-W905, IT WAS RAN AT A MUCH HIGHER RATE AND THE DESIRED VOLUME OF THE CHEMICAL WAS PUMPED IN LESS THAT HALF THE STAGE IT SHOULD HAVE BEEN PUMPED IN. HAD PROBLEMS WITH VISCOSITY GETTING TO DESIRED CPS DURING X-LINK PAD, ADDED 120 BBLs TO PHAZER X-LINK PAD. FLUSHED WELL AND SHUT DOWN DURING 2 PSA STAGE BECAUSE WE LOST A TOTAL OF 3 FRAC PUMPS AND WAS ONLY ABLE TO GET 18 BPM. ONCE HORSE POWER WAS REPLACE WE RESUMED THE JOB ON PAD AND WENT TO 2 PSA. HAD VERY POSITIVE NOLTE SLOPE DURING 4 PSA STAGE SO RATE WAS INCREASED. AND THE END OF 4 PSA STAGE WE LOST ANOTHER FRAC PUMP AND AROUND THE SAME TIME GOT A BIG BREAK IN PRESSURE. WAS ABLE TO PUMP THE REMAINDER OF SAND ON LOCATION. POST JOB ISDP = 3127 PSI, POST JOB 5 MIN = 2952 PSI.

Other In Hole				
Run Date	Des	OD (in)	Top (ftKB)	Btm (ftKB)

Logs			
Date	Type	Top, MD (ftKB)	Btm, MD (ftKB)
7/30/2010	DT (QUAD COMBO)	1,264.0	7,830.0
7/30/2010	SPECTRAL DENSITY/Pe/DSN NEUTRON/SP/ARRAY COMPENSATED TRUE RESISTIVITY/6 ARM CALIPER MICRO LOG	1,264.0	7,841.0
7/30/2010	SPECTRAL GAMMA RAY	1,264.0	7,800.0
9/15/2010	SONIC BOND	0.0	7,740.0