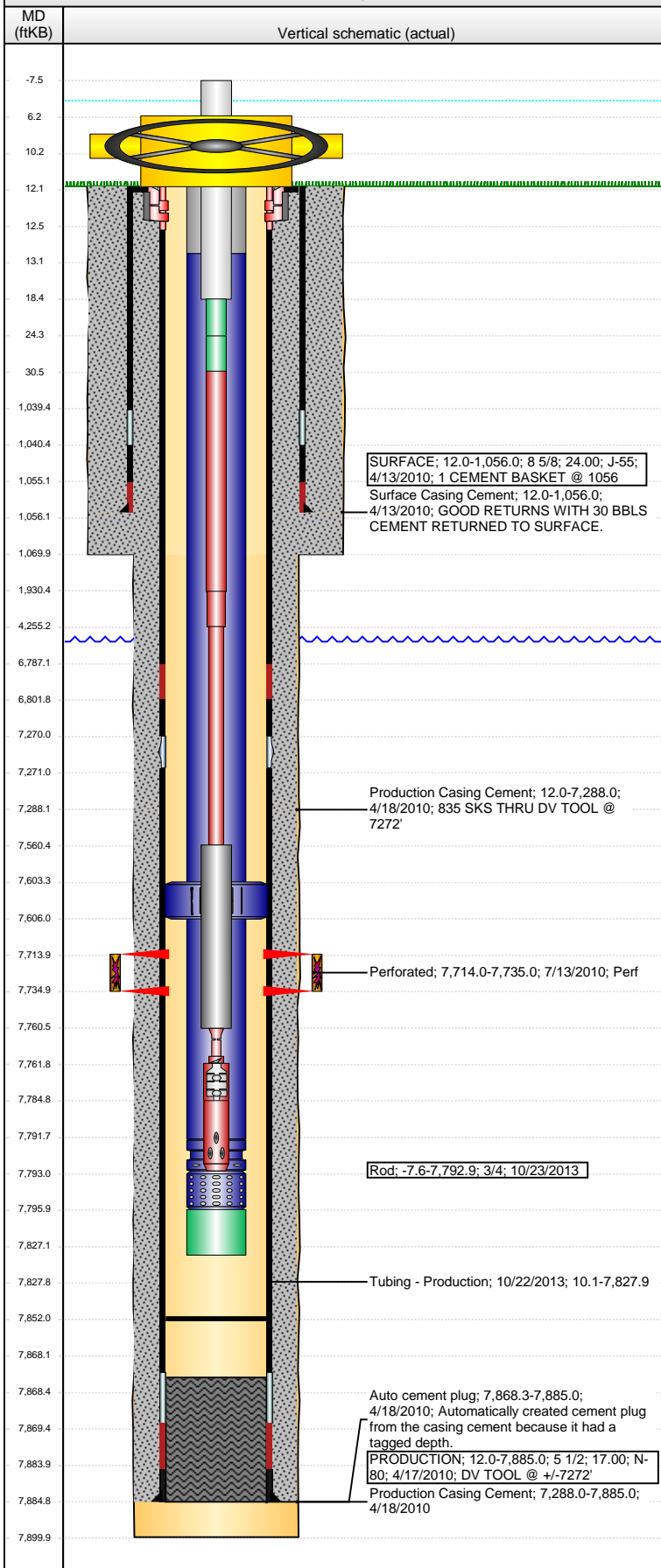


**Well Name: GORDON 1261-28-32**

VERTICAL - ORIGINAL HOLE, 8/24/2015 1:46:58 PM



## Well Header

API	Business Unit	District	Well Config
05-123-30305	DJ BASIN	25	VERTICAL
Original KB Elevation (ft)	KB - GL / MSL (ftKB)	Spud Date	P & A Date
5,247.00	12.00	4/12/2010	

## Comment

DV TOOL DRILLED OUT @ +/- 7272'

## Directions To Well

HEREFORD COLO. WCR 89 & 136, NORTH .4, EAST INTO.

## Congressional Location

Quarter 1	Quarter 2	Quarter 3	Quarter 4	Section	Township	Twnshp N...	Range	Rng E/W Dir
		NW	SW	28	12	N	61	W

## Bottom Hole Location

North-South Distance (ft)	From N or S Line	East-West Distance (ft)	From E or W Line
---------------------------	------------------	-------------------------	------------------

## Plug Back Total Depths

Date	Depth (ftKB)	Method	Com
4/18/2010	7,868.0	CASING TALLY	FLOAT COLLAR
7/20/2010	7,868.0	TAG	C/O LND TBG
8/17/2011	7,861.7	TAG	TBG TALLY MEASUREMENT.
12/27/2012	7,852.0	TAG	TBG TALLY 117' OF RAT HOLE

## Wellbore Sections

Section Des	Size (in)	Act Top, MD (ftKB)	Act Btm, MD (ftKB)
SURFACE	12 1/4	12.0	1,070.0
PRODUCTION	7 7/8	1,070.0	7,900.0

## Zone Statuses

Zone Name	Status Date	Status	Fluid Type	Job	Prod Method
J SAND	7/25/2010	PR		DRILLING/CO...	

## Casing Strings

### SURFACE, 1,056.0ftKB

Casing Description	Run Date	OD (in)	Wt/Len (l...	Grade	Top, MD (ft...	MD (ftKB)
SURFACE	4/13/2010	8 5/8	24.00	J-55	12.0	1,056.0

### PRODUCTION, 7,885.0ftKB

Casing Description	Run Date	OD (in)	Wt/Len (l...	Grade	Top, MD (ft...	MD (ftKB)
PRODUCTION	4/17/2010	5 1/2	17.00	N-80	12.0	7,885.0

## Cement

Description	Top Depth (ftKB)	Bottom Depth (ftKB)
Surface Casing Cement	12.0	1,056.0
Description	Top Depth (ftKB)	Bottom Depth (ftKB)
Production Casing Cement	12.0	7,288.0
Description	Top Depth (ftKB)	Bottom Depth (ftKB)
Production Casing Cement	7,288.0	7,885.0

## Tubing Strings

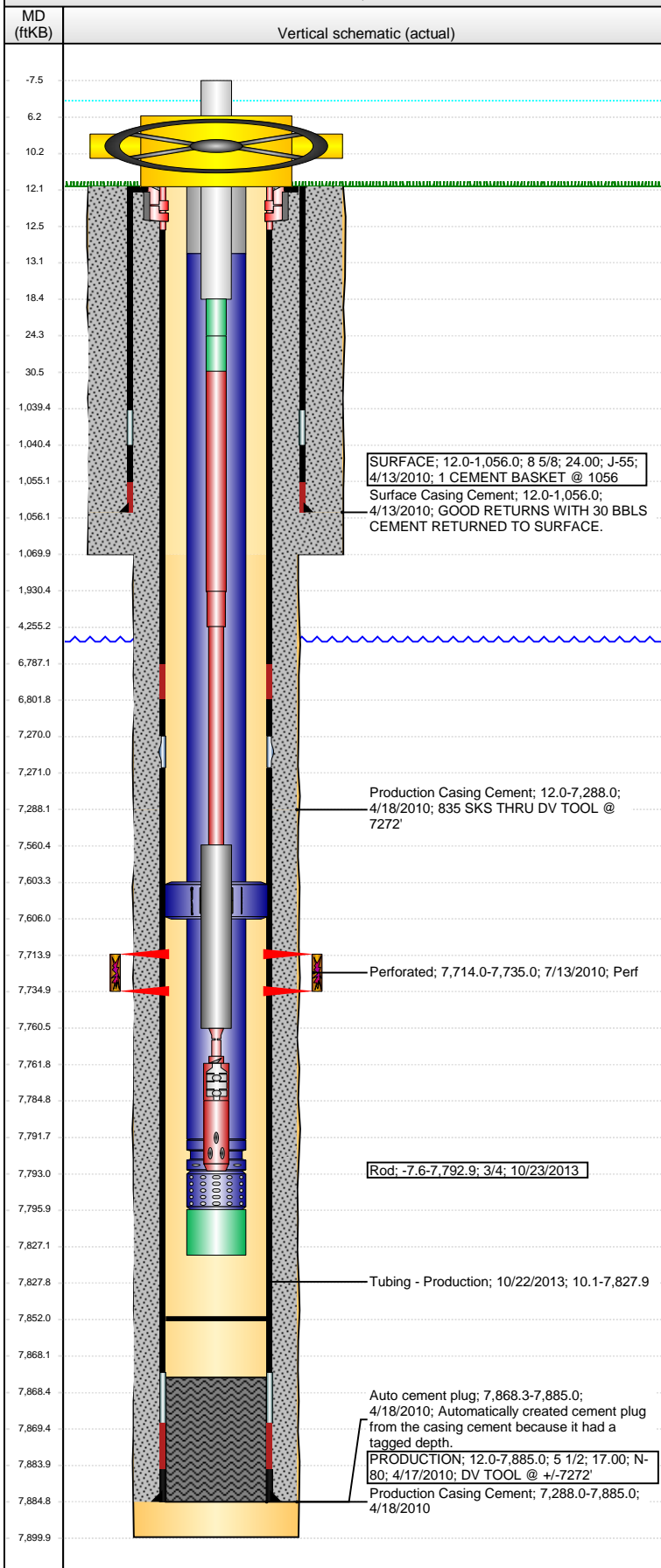
Tubing Description	Run Date	String...	ID (in)	Wt (lb/ft)	Grade	Len (ft)	Set De...
Tubing - Production	7/21/2010	2 7/8	2.441	6.50	J-55	7,630.66	7,639.2
Tubing Description	Run Date	String...	ID (in)	Wt (lb/ft)	Grade	Len (ft)	Set De...
Tubing - Production	8/17/2011	2 7/8	2.441	6.50	J-55	7,812.59	7,821.1
Tubing Description	Run Date	String...	ID (in)	Wt (lb/ft)	Grade	Len (ft)	Set De...
Tubing - Production	1/3/2013	2 7/8	2.441	6.50	J-55	7,817.83	7,827.4
Tubing Description	Run Date	String...	ID (in)	Wt (lb/ft)	Grade	Len (ft)	Set De...
Tubing - Production	10/22/2013	2 7/8	2.441	6.50	J-55	7,817.83	7,827.3

## Tubing Components

Item Des	OD (in)	Wt (lb/ft)	Grade	Jts	Len (ft)	Btm (ftKB)	Btm (TVD) (ftKB)
Stretch Correction	2 7/8	6.50	J-55	1	2.92	13.0	
Tubing	2 7/8	6.50	J-55	246	7,590.26	7,603.3	
Anchor/catcher	4.99	6.50	J-55	1	2.85	7,606.1	7,605.6
Tubing	2 7/8	6.50	J-55	6	185.63	7,791.7	7,791.2
Pump Seating Nipple	2 7/8	6.50	N-80	1	1.12	7,792.9	7,792.3
Perforated Joint	2 7/8	6.50	J-55	1	3.15	7,796.0	7,795.4
Mud Anchor	2 7/8	6.50	J-55	1	31.25	7,827.3	7,826.7
Bull Plug	2 3/8	6.50	J-55	1	0.65	7,827.9	7,827.3

**Well Name: GORDON 1261-28-32**

VERTICAL - ORIGINAL HOLE, 8/24/2015 1:47:01 PM



## Rods & Pumps

Rod Description	Run Date	Set Depth (ftKB)
Rod	10/23/2013	7,792.9
Comment		
Item Description	OD Nominal (in)	Joints Length (ft)
Polished Rod	1 1/2	1 26.00
Item Description	OD Nominal (in)	Joints Length (ft)
Pony Rod	1	1 6.00
Item Description	OD Nominal (in)	Joints Length (ft)
Pony Rod	1	1 6.00
Item Description	OD Nominal (in)	Joints Length (ft)
Sucker Rod	1	76 1,900.00
Item Description	OD Nominal (in)	Joints Length (ft)
Sucker Rod	7/8	93 2,325.00
Item Description	OD Nominal (in)	Joints Length (ft)
Sucker Rod	3/4	132 3,305.00
Item Description	OD Nominal (in)	Joints Length (ft)
Sinker Bar	1 1/2	8 200.00
Item Description	OD Nominal (in)	Joints Length (ft)
On/Off Tool	3/4	1 1.50
Item Description	OD Nominal (in)	Joints Length (ft)
RHBC Pump - BHD	1 1/4	1 23.00
API Pump Type	Barrel Length (ft)	Seating Assembly Type
R	24.00	C
Item Description	OD Nominal (in)	Joints Length (ft)
Strainer	1 1/4	1 8.00

## Perforation Data

Zone	Bnch/St g	Entered Shot Total	Top (ftKB)	Btm (ftKB)	Date
J SAND, ORIGINAL HOLE		84	7,714.00	7,735.00	7/13/2010

## Stimulations & Treatments

Date	Zone	Primary Job Type
7/19/2010	J SAND, ORIGINAL HOLE	DRILLING/COMPLETION - ORIGINAL
Technical Result	Tech Result Details	Tech Result Note
Success	According to Plan	
Comment		
(J-SAND): REVERSE STEP RATE RESULTS: PO 28, NWB 262 PSI, WB 278 PSI, PPF 211 PSI FOR A TOTAL OF 751 PSI OF FRICTION. TREATMENT WENT WELL, NO ISSUES TO REPORT. RAN CLAYFIX THROUGHOUT FLUSH. AVG VISC 17.6 CPS, AVG TEMP 72.2F, AVG PH 4.92, AVG PRESS 2426 PSI, AVG RATE 44.8 BPM. POST JOB 5 MIN OF 2738 PSI.		

## Other In Hole

Run Date	Des	OD (in)	Top (ftKB)	Btm (ftKB)

## Logs

Date	Type	Top, MD (ftKB)	Btm, MD (ftKB)
4/17/2010	GAMMA RAY, DENSITY, NEUTRON, INDUCTION, SONIC - Compressional and Shear	1,060.0	7,888.0
4/17/2010	SPECTRAL GAMMA, FMI, X-DIPOLE SHEAR	1,060.0	7,888.0
5/18/2010	CBL/CCL/GR	0.0	7,859.0