

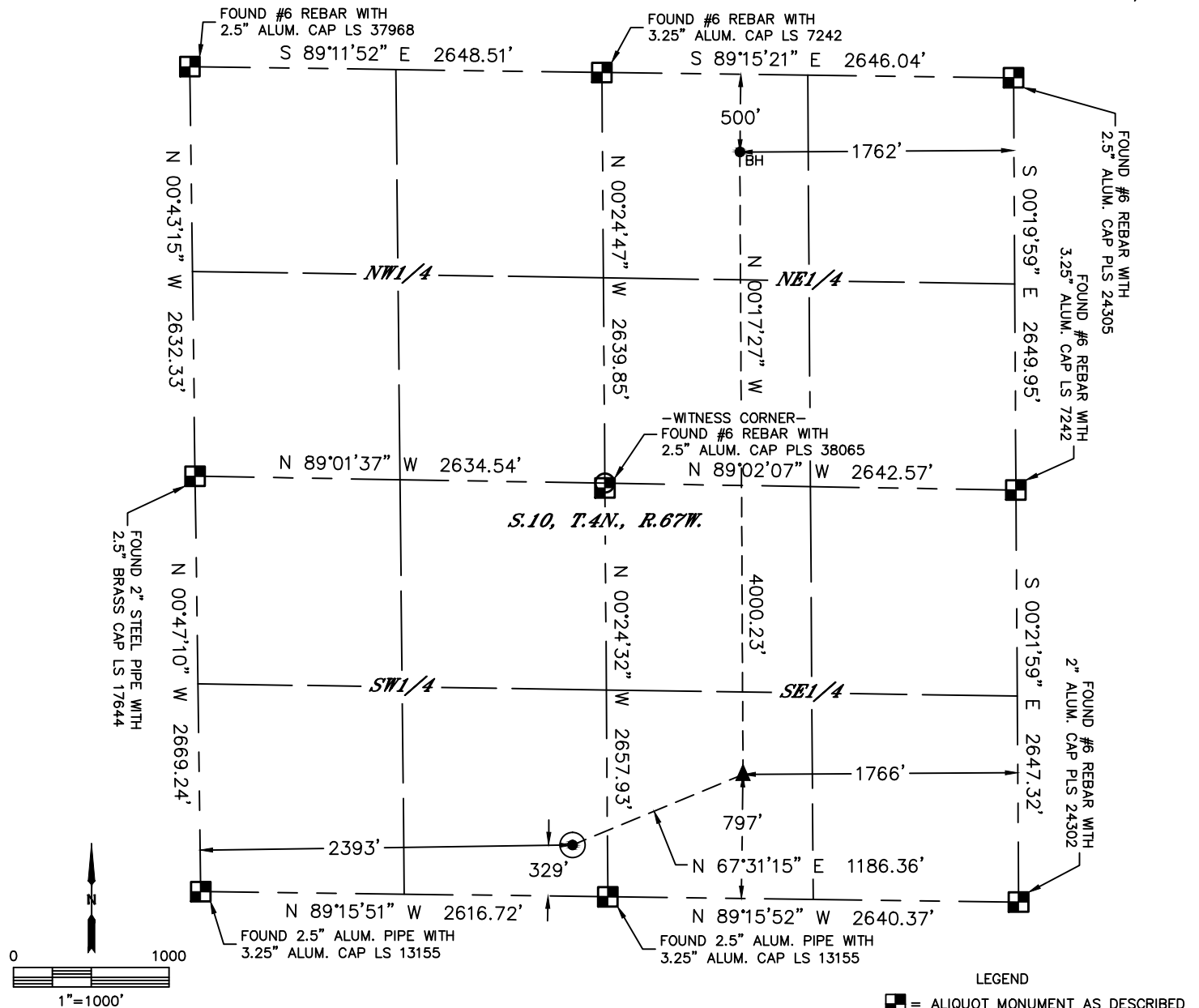


Lat40°, Inc. 6250 W. 10th St, Unit 2 Greeley, CO 970-515-5294

WELL LOCATION CERTIFICATE

SPAUR 10T-241

SECTION: 10
TOWNSHIP: 4N
RANGE: 67W
6TH P.M.
WELD COUNTY, CO



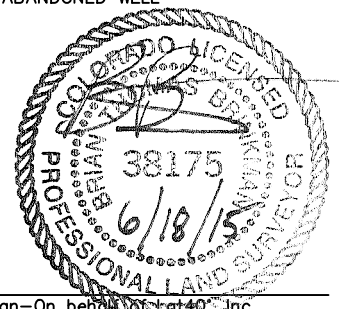
CLIENT: PDC ENERGY				LANDMAN: BARNEY HAMMOND			
INSTRUMENT OPERATOR: ADAM BEAUPREZ				SURVEY DATE: 5/18/2015		SURFACE USE: CROP LAND	
SHL FOOTAGE	SHL LAT °	SHL LONG °	SHL PDOP	SHL ELEV (FT.)	SHL 1/4/1/4	SHL S-T-R	
329 FSL 2393 FWL	40.32048	-104.87795	1.9	4830	SESW	10-4-67	

BHL FOOTAGE	BHL LAT °	BHL LONG °	BHL 1/4/1/4	BHL S-T-R	EP LAT °	EP LONG °	EP S-T-R
500 FNL 1762 FEL	40.33269	-104.87397	NWNE	10-4-67	40.32171	-104.87400	10-4-67

NEAREST CULTURAL ITEMS	
BUILDING	±1785' NE
BUILDING UNIT	±1785' NE
HIGH OCCUPANCY BUILDING UNIT	±2581' NE
DESIGNATED OUTSIDE ACTIVITY AREA	5280'+
PUBLIC ROAD (COUNTY ROAD 46)	±319' S
ABOVE GROUND UTILITY	±300' S
RAILROAD	±5005' N
PROPERTY LINE	±225' E

NOTE:
1) Bearings shown are Grid Bearings of the Colorado State Plane Coordinate System, North Zone, North American Datum 1983. The lineal dimensions as contained herein are based upon the "U.S. Survey Foot."
2) Distances to section lines measured at 90 degrees from said section lines.
3) Ground elevations are based on an observed GPS elevation (NAVD 1988 DATUM).
4) Latitude and Longitude shown are (NAD 83 DATUM).
5) IMPROVEMENTS: See LOCATION DRAWING for all visible improvements within 500' of Oil and Gas Location.
6) This map does not represent a boundary survey

- LEGEND
- = ALIQUOT MONUMENT AS DESCRIBED
 - = CALCULATED POSITION
 - = SURFACE HOLE LOCATION (SHL)
 - ▲ = ENTRY POINT LOCATION (EP)
 - BH = BOTTOM HOLE LOCATION (BHL)
 - ⊕ = EXISTING WELL
 - ⊖ = ABANDONED WELL



Brian T. Brinkman-On behalf of Lat40°, Inc.
Colorado Licensed Professional Land Surveyor No. 38175
DATE: 5/21/2015
PROJECT#: 2014159

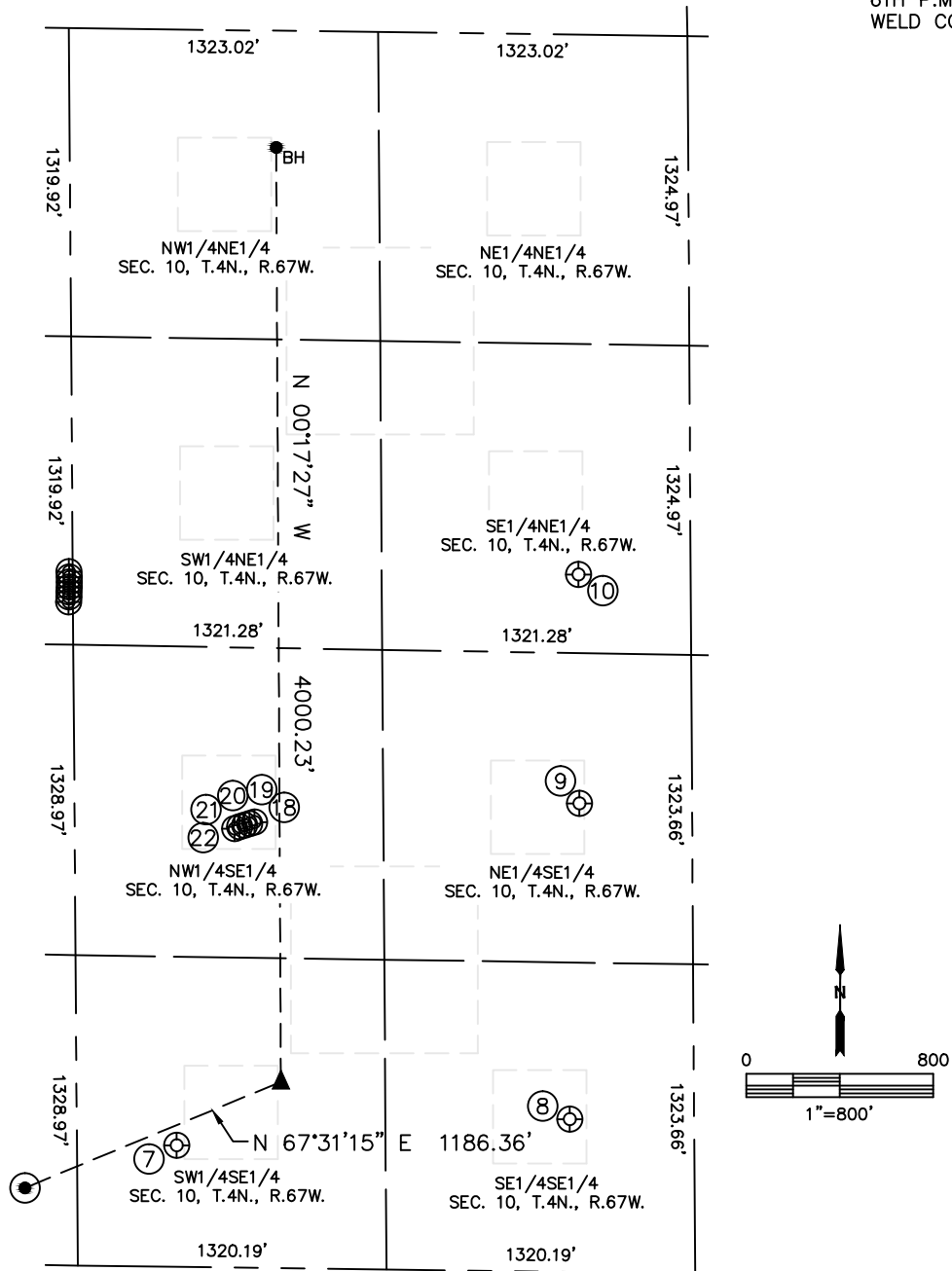


Lat40°, Inc. 6250 W. 10th St, Unit 2 Greeley, CO 970-515-5294

SITE SKETCH

SPAUR 10T-241

SECTION: 10
TOWNSHIP: 4N
RANGE: 67W
6TH P.M.
WELD COUNTY, CO



WELL NO.	WELL NAME	SHL FOOTAGE				SHL LAT°	SHL LONG°	PDOP	ELEV (FT.)	1/4/1/4
7	PURVIS 10-2	519	FSL	2214	FEL	40.32097	-104.87561	2.5	4822	SWSE
8	OSTER 10-1	654	FSL	531	FEL	40.32125	-104.86958	2.7	4787	SESE
9	OSTER 10-2	2005	FSL	481	FEL	40.32495	-104.86939	2.9	4776	NESE
10	OSTER 10-3	2311	FNL	480	FEL	40.32764	-104.86939	3.0	4773	SENE
18	PURVIS 10XD	1907	FSL	1872	FEL	40.32476	-104.87438	2.9	4794	NWSE
19	PURVIS 10WD	1900	FSL	1893	FEL	40.32474	-104.87446	3.4	4794	NWSE
20	PURVIS 10DD	1893	FSL	1915	FEL	40.32472	-104.87453	2.9	4794	NWSE
21	PURVIS 10TD	1886	FSL	1938	FEL	40.32471	-104.87461	2.9	4794	NWSE
22	PURVIS 10-1	1879	FSL	1957	FEL	40.32469	-104.87469	2.9	4794	NWSE

DATE: 6/18/2015
PROJECT#: 2014159