

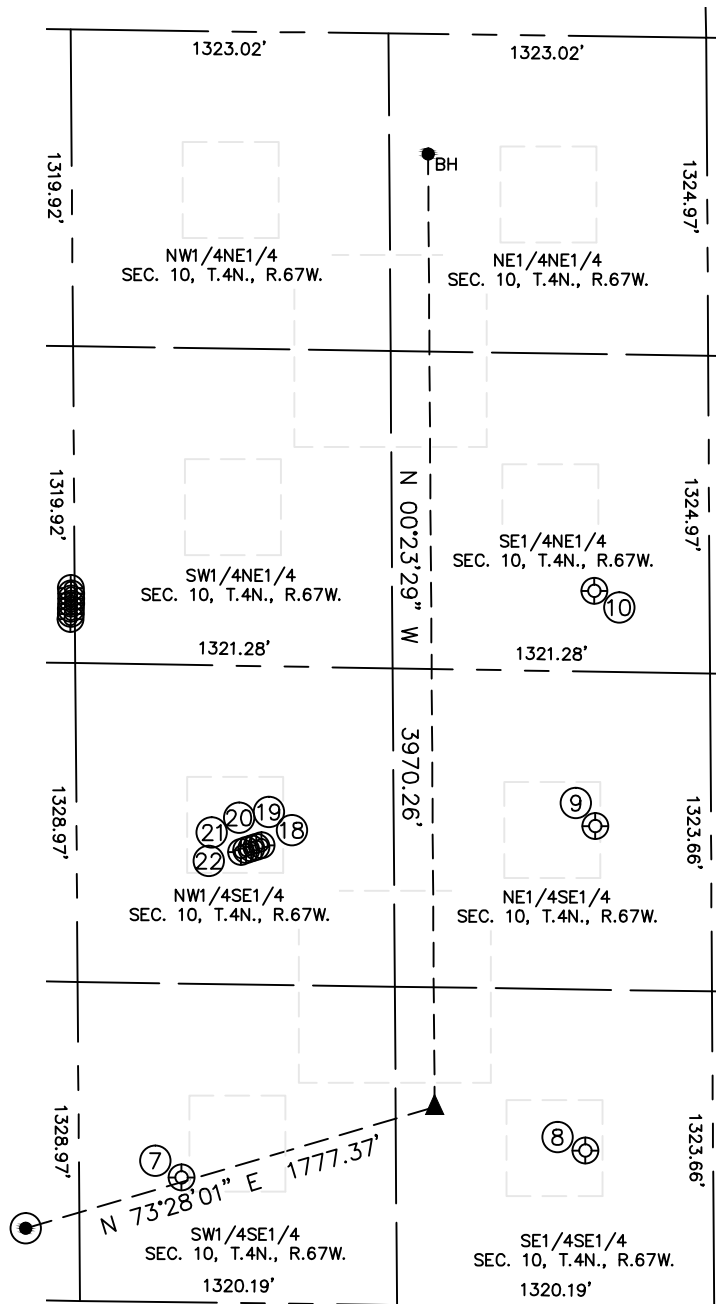


Lat40°, Inc. 6250 W. 10th St, Unit 2 Greeley, CO 970-515-5294

# SITE SKETCH

SPAUR 10T-201

SECTION: 10  
TOWNSHIP: 4N  
RANGE: 67W  
6TH P.M.  
WELD COUNTY, CO



WELL NO.	WELL NAME	SHL FOOTAGE				SHL LAT°	SHL LONG°	PDOP	ELEV (FT.)	1/4/1/4
7	PURVIS 10-2	519	FSL	2214	FEL	40.32097	-104.87561	2.5	4822	SWSE
8	OSTER 10-1	654	FSL	531	FEL	40.32125	-104.86958	2.7	4787	SESE
9	OSTER 10-2	2005	FSL	481	FEL	40.32495	-104.86939	2.9	4776	NESE
10	OSTER 10-3	2311	FNL	480	FEL	40.32764	-104.86939	3.0	4773	SENE
18	PURVIS 10XD	1907	FSL	1872	FEL	40.32476	-104.87438	2.9	4794	NWSE
19	PURVIS 10WD	1900	FSL	1893	FEL	40.32474	-104.87446	3.4	4794	NWSE
20	PURVIS 10DD	1893	FSL	1915	FEL	40.32472	-104.87453	2.9	4794	NWSE
21	PURVIS 10TD	1886	FSL	1938	FEL	40.32471	-104.87461	2.9	4794	NWSE
22	PURVIS 10-1	1879	FSL	1957	FEL	40.32469	-104.87469	2.9	4794	NWSE

DATE: 6/18/2015  
PROJECT#: 2014159