

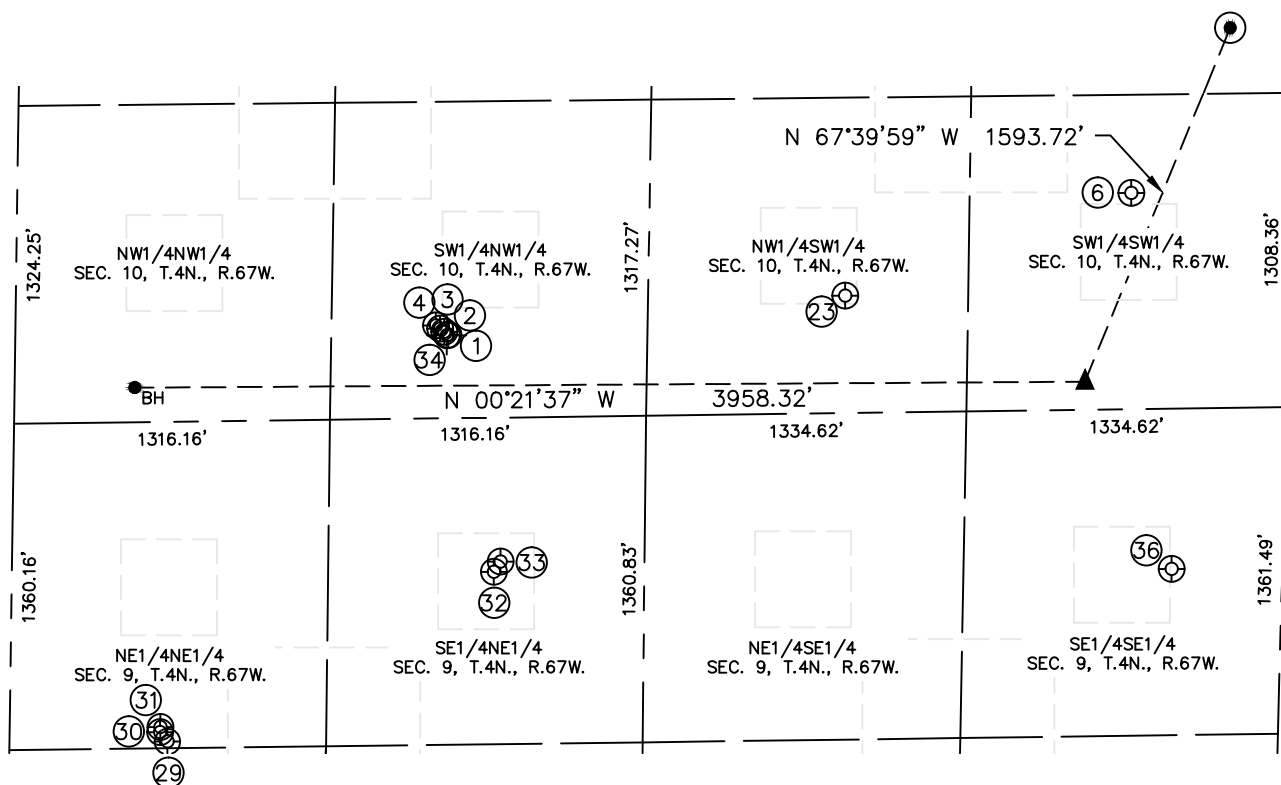


Lat40°, Inc. 6250 W. 10th St, Unit 2 Greeley, CO 970-515-5294

SITE SKETCH

SPAUR 10i-201

SECTION: 10
TOWNSHIP: 4N
RANGE: 67W
6TH P.M.
WELD COUNTY, CO



WELL NO.	WELL NAME	SHL FOOTAGE				SHL LAT°	SHL LONG°	PDOP	ELEV (FT.)	1/4/1/4
1	BINDER 11-10DU	1804	FNL	346	FWL	40.32929	-104.88536	1.7	4763	SWNW
2	BINDER 12-10DU	1786	FNL	360	FWL	40.32934	-104.88531	1.7	4763	SWNW
3	BINDER 10-ADU	1768	FNL	374	FWL	40.32938	-104.88526	2.4	4762	SWNW
4	BINDER 21-10DU	1751	FNL	387	FWL	40.32943	-104.88521	2.4	4763	SWNW
6	SPAR 10-3	660	FSL	900	FWL	40.32147	-104.88331	2.0	4824	SWSW
23	SPAUR 10-1	1845	FSL	488	FWL	40.32475	-104.88481	2.8	4803	NWSW
29	GREAT WESTERN SUGAR 1	658	FNL	1332	FEL	40.33253	-104.89140	3.2	4784	NENE
30	GOLD 9C-DU	627	FNL	1271	FEL	40.33261	-104.89118	3.3	4783	NENE
31	GOLD 31-9DU	627	FNL	1293	FEL	40.33262	-104.89126	4.4	4783	NENE
32	GREAT WESTERN SUGAR 6	2007	FNL	642	FEL	40.32879	-104.88890	2.9	4765	SENE
33	GOLD 9V-DU	2033	FNL	601	FEL	40.32871	-104.88875	2.9	4766	SENE
34	BINDER 1	1796	FNL	346	FWL	40.32928	-104.88533	N/A	4761	SWNW
36	HOVEY-WANKER 1-9	461	FSL	668	FEL	40.32104	-104.88892	1.2	4845	SESE

NOTE: THE ABANDONED WELL DATA SHOWN IN RED ABOVE WAS OBTAINED FROM COGCC SCOUT CARDS.

DATE: 6/18/2015
PROJECT#: 2014159