

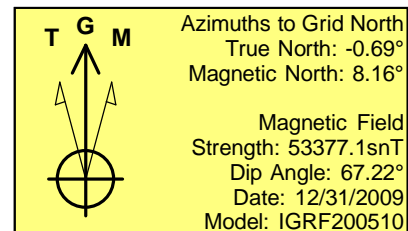
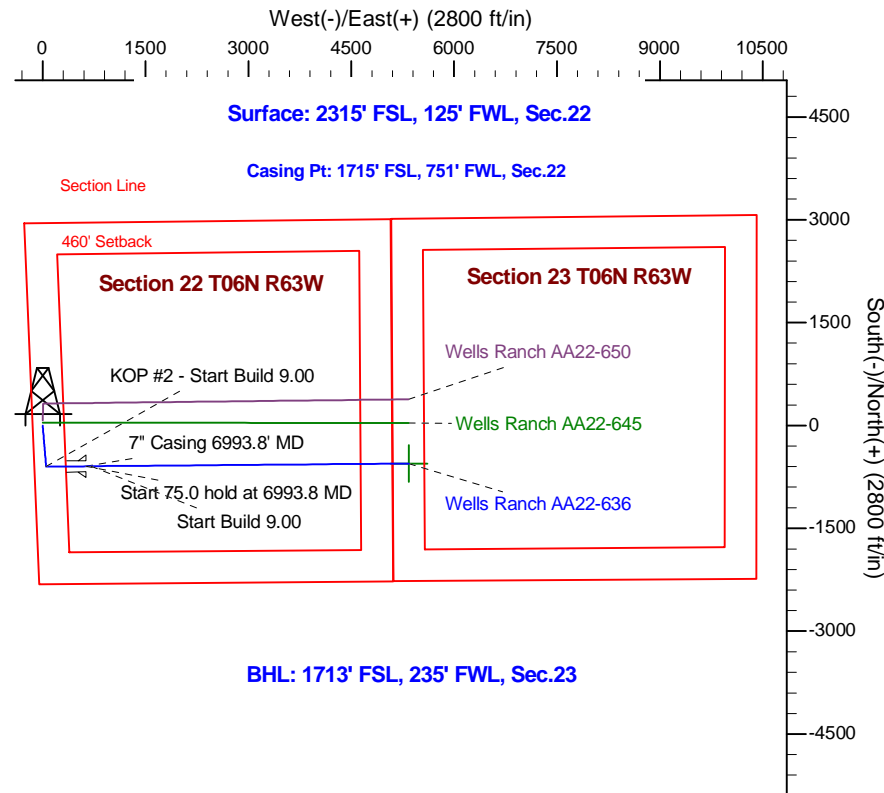
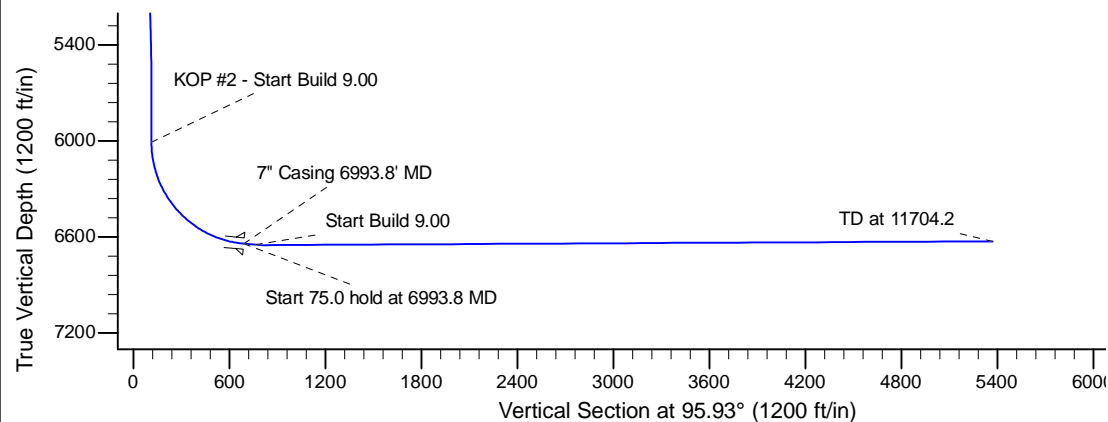
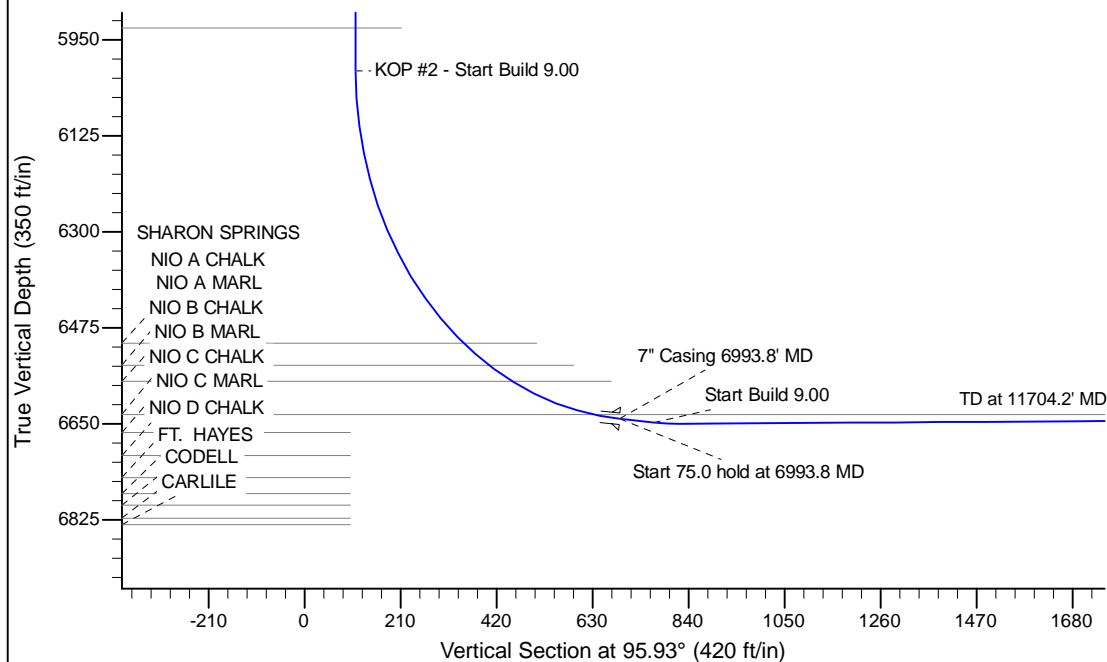
Project: Wattenberg Field
 Site: AA (Sec.22-T06N-R63W) Weld County, CO
 Well: Wells Ranch AA22-636
 Wellbore: Original Drilling
 Design: APD - Rev 0

Northern Region Drilling - Working

Geodetic System: US State Plane 1983
 Datum: North American Datum 1983
 Ellipsoid: GRS 1980
 Zone: Colorado Northern Zone
 System Datum: Mean Sea Level

SECTION DETAILS

Sec	MD	Inc	Azi	TVD	+N/-S	+E/-W	Dleg	TFace	VSect	Target
1	0.0	0.00	0.00	0.0	0.0	0.0	0.00	0.00	0.0	
2	1200.0	0.00	0.00	1200.0	0.0	0.0	0.00	0.00	0.0	
3	1619.8	8.40	175.24	1618.3	-30.6	2.5	2.00	175.24	5.7	
4	5322.9	8.40	175.24	5281.7	-569.4	47.5	0.00	0.00	106.0	
5	5742.7	0.00	0.00	5700.0	-600.0	50.0	2.00	180.00	111.7	
6	6049.4	0.00	0.00	6006.7	-600.0	50.0	0.00	0.00	111.7	
7	6993.8	85.00	89.51	6640.9	-595.0	631.1	9.00	89.51	689.2	
8	7068.8	85.00	89.51	6647.4	-594.4	705.8	0.00	0.00	763.4	
9	7127.7	90.30	89.51	6649.9	-593.8	764.6	9.00	0.00	821.9	
10	11704.2	90.30	89.51	6625.9	-554.5	5340.8	0.00	0.00	5369.5	Wells Ranch AA22-636 BHL 1713'FSL, 235'FWL



WELL DETAILS: Wells Ranch AA22-636					
Ground Level: 4757.0					
0.0	0.0	Northing	Easting	Latitude	Longitude
		1416295.49	3297157.21	40.471220	-104.431900
Plan: APD - Rev 0 (Wells Ranch AA22-636/Original Drilling)					
Created By: Shailey Jewell			Date: 9:57, April 13 2015		
OK to submit with 2A as per Noble Drilling 4/13/2015 10:07					