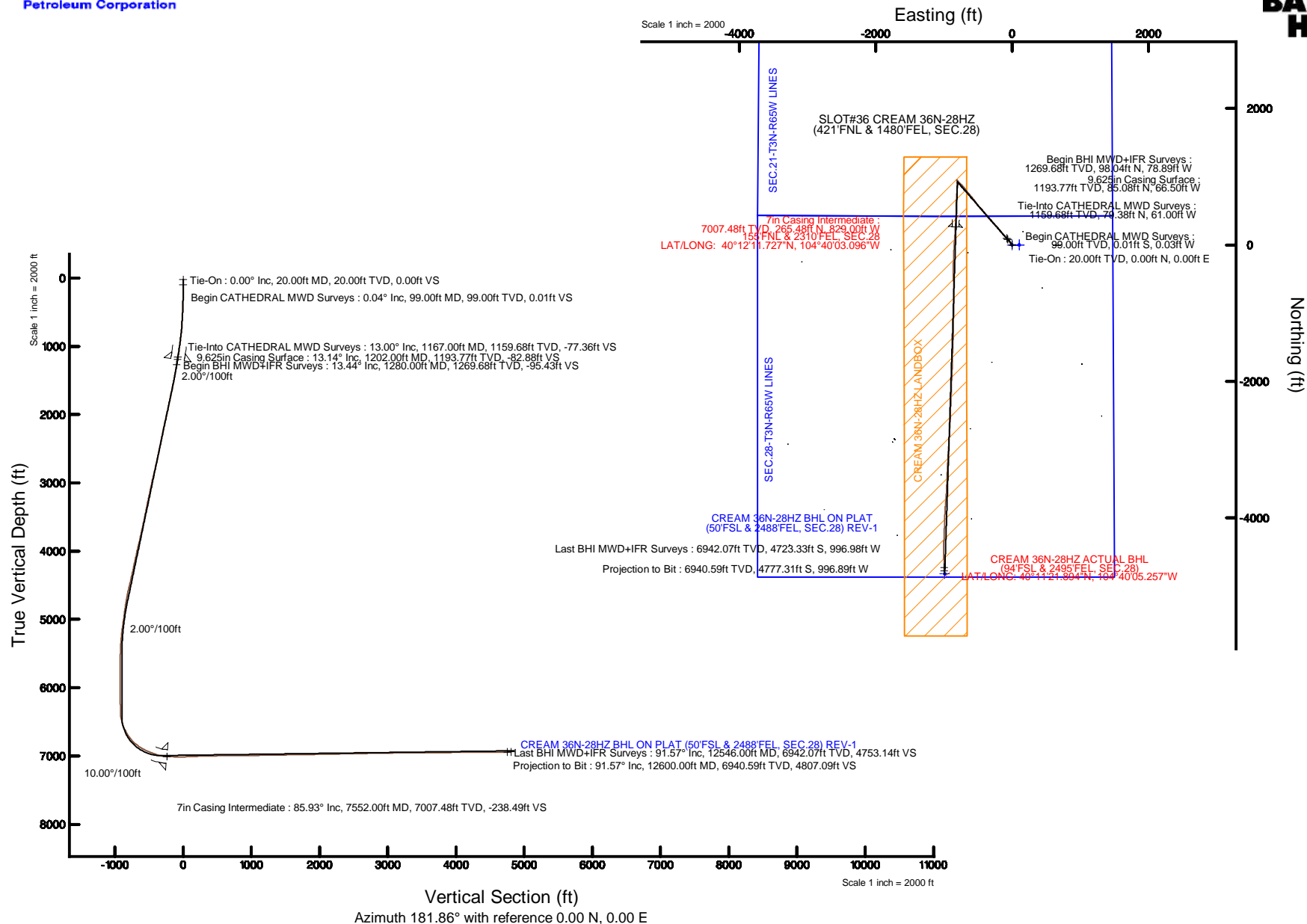


KERR-MCGEE OIL & GAS ONSHORE LP (WA)

Location: COLORADO Slot: SLOT#36 CREAM 36N-28HZ (421°FNL & 1480°FEL, SEC.28)
 Field: WELD COUNTY (UTM/TRUE NORTH) Well: CREAM 36N-28HZ
 Facility: SEC.28-T3N-R65W Wellbore: CREAM 36N-28HZ PWB

Plot reference wellpath is CREAM 36N-28HZ (REV-A.0) PWP

True vertical depths are referenced to PRECISION 462 (20'KB) (RKB)	Grid System: NAD83 / UTM Zone 13 North, US feet
Measured depths are referenced to PRECISION 462 (20'KB) (RKB)	North Reference: True north
PRECISION 462 (20'KB) (RKB) to Mean Sea Level: 4844 feet	Scale: True distance
Mean Sea Level to Mud line (At Slot: SLOT#36 CREAM 36N-28HZ (421°FNL & 1480°FEL, SEC.28)): 0 feet	Depths are in feet
Coordinates are in feet referenced to Slot	Created by: precin on 7/29/2015



REFERENCE WELLPATH IDENTIFICATION

Operator	KERR-MCGEE OIL & GAS ONSHORE LP (WA)	Slot	SLOT#36 CREAM 36N-28HZ (421'FNL & 1480'FEL, SEC.28)
Area	COLORADO	Well	CREAM 36N-28HZ
Field	WELD COUNTY (UTM/TRUE NORTH)	Wellbore	CREAM 36N-28HZ AWB <12600>
Facility	SEC.28-T3N-R65W		

REPORT SETUP INFORMATION

Projection System	NAD83 / UTM Zone 13 North, US feet	Software System	WellArchitect® 4.1.1
North Reference	True	User	Precain
Scale	0.99961	Report Generated	7/29/2015 at 12:27:46 PM
Convergence at slot	0.22° East	Database/Source file	WellArchitectAPC/CREAM_36N-28HZ_AWB__12600_.xml

WELLPATH LOCATION

	Local coordinates		Grid coordinates		Geographic coordinates	
	North[ft]	East[ft]	Easting[US ft]	Northing[US ft]	Latitude	Longitude
Slot Location	2844.83	1726.59	1734079.24	14600660.70	40°12'09.104"N	104°39'52.412"W
Facility Reference Pt			1732363.88	14597810.60	40°11'40.992"N	104°40'14.664"W
Field Reference Pt			1698235.31	14552047.82	40°04'09.600"N	104°47'36.000"W

WELLPATH DATUM

Calculation method	Minimum curvature	PRECISION 462 (20'KB) (RKB) to Facility Vertical Datum	4844.00ft
Horizontal Reference Pt	Slot	PRECISION 462 (20'KB) (RKB) to Mean Sea Level	4844.00ft
Vertical Reference Pt	PRECISION 462 (20'KB) (RKB)	PRECISION 462 (20'KB) (RKB) to Mud Line at Slot (SLOT#36 CREAM 36N-28HZ (421'FNL & 1480'FEL, SEC.28))	4844.00ft
MD Reference Pt	PRECISION 462 (20'KB) (RKB)	Section Origin	N 0.00, E 0.00 ft
Field Vertical Reference	Mean Sea Level	Section Azimuth	181.86°

REFERENCE WELLPATH IDENTIFICATION			
Operator	KERR-MCGEE OIL & GAS ONSHORE LP (WA)	Slot	SLOT#36 CREAM 36N-28HZ (421'FNL & 1480'FEL, SEC.28)
Area	COLORADO	Well	CREAM 36N-28HZ
Field	WELD COUNTY (UTM/TRUE NORTH)	Wellbore	CREAM 36N-28HZ AWB <12600>
Facility	SEC.28-T3N-R65W		

WELLPATH DATA (152 stations) † = interpolated/extrapolated station										
MD [ft]	Inclination [°]	Azimuth [°]	TVD [ft]	Vert Sect [ft]	North [ft]	East [ft]	Latitude	Longitude	DLS [°/100ft]	Comments
0.00†	0.000	254.400	0.00	0.00	0.00	0.00	40°12'09.104"N	104°39'52.412"W	0.00	
20.00	0.000	254.400	20.00	0.00	0.00	0.00	40°12'09.104"N	104°39'52.412"W	0.00	Tie-On
99.00	0.040	254.400	99.00	0.01	-0.01	-0.03	40°12'09.104"N	104°39'52.412"W	0.05	Begin CATHEDRAL MWD Surveys
163.00	0.200	313.800	163.00	-0.06	0.06	-0.13	40°12'09.105"N	104°39'52.414"W	0.29	
221.00	0.200	18.900	221.00	-0.22	0.23	-0.17	40°12'09.106"N	104°39'52.414"W	0.37	
278.00	0.400	347.400	278.00	-0.51	0.52	-0.18	40°12'09.109"N	104°39'52.414"W	0.44	
335.00	1.500	328.400	334.99	-1.33	1.35	-0.61	40°12'09.117"N	104°39'52.420"W	1.98	
399.00	2.900	318.500	398.94	-3.20	3.27	-2.13	40°12'09.136"N	104°39'52.439"W	2.26	
463.00	3.900	316.100	462.83	-5.90	6.05	-4.71	40°12'09.164"N	104°39'52.473"W	1.58	
527.00	4.200	319.100	526.67	-9.14	9.39	-7.75	40°12'09.197"N	104°39'52.512"W	0.57	
591.00	4.400	321.100	590.49	-12.72	13.08	-10.83	40°12'09.233"N	104°39'52.552"W	0.39	
655.00	4.100	322.600	654.31	-16.35	16.80	-13.76	40°12'09.270"N	104°39'52.589"W	0.50	
719.00	5.300	325.400	718.10	-20.50	21.06	-16.83	40°12'09.312"N	104°39'52.629"W	1.91	
783.00	6.400	328.100	781.76	-25.84	26.52	-20.39	40°12'09.366"N	104°39'52.675"W	1.77	
846.00	8.000	330.600	844.26	-32.51	33.32	-24.40	40°12'09.433"N	104°39'52.726"W	2.59	
910.00	8.800	327.000	907.58	-40.33	41.30	-29.25	40°12'09.512"N	104°39'52.789"W	1.50	
974.00	10.200	320.500	970.70	-48.61	49.78	-35.52	40°12'09.596"N	104°39'52.870"W	2.75	
1036.00	11.100	322.400	1031.63	-57.33	58.75	-42.66	40°12'09.685"N	104°39'52.962"W	1.56	
1101.00	12.300	317.800	1095.28	-67.14	68.83	-51.13	40°12'09.784"N	104°39'53.071"W	2.34	
1167.00	13.000	316.000	1159.68	-77.36	79.38	-61.00	40°12'09.888"N	104°39'53.198"W	1.22	Tie-Into CATHEDRAL MWD Surveys
1280.00	13.440	316.410	1269.68	-95.43	98.04	-78.89	40°12'10.073"N	104°39'53.429"W	0.40	Begin BHI MWD+IFR Surveys
1373.00	13.920	316.310	1360.04	-110.85	113.95	-94.07	40°12'10.230"N	104°39'53.624"W	0.52	
1466.00	13.430	315.960	1450.41	-126.20	129.81	-109.30	40°12'10.387"N	104°39'53.821"W	0.53	
1560.00	15.130	319.900	1541.50	-142.92	147.04	-124.79	40°12'10.557"N	104°39'54.020"W	2.08	
1653.00	15.210	319.520	1631.26	-160.96	165.60	-140.53	40°12'10.740"N	104°39'54.223"W	0.14	
1746.00	16.280	320.670	1720.77	-179.79	184.96	-156.71	40°12'10.932"N	104°39'54.432"W	1.20	
1840.00	16.200	320.320	1811.02	-199.52	205.25	-173.44	40°12'11.132"N	104°39'54.647"W	0.13	
1933.00	17.060	320.810	1900.13	-219.52	225.81	-190.34	40°12'11.335"N	104°39'54.865"W	0.94	
2026.00	16.990	319.430	1989.05	-239.84	246.70	-207.80	40°12'11.542"N	104°39'55.090"W	0.44	
2119.00	16.880	318.520	2078.02	-259.69	267.14	-225.58	40°12'11.744"N	104°39'55.319"W	0.31	
2213.00	16.880	316.970	2167.97	-279.29	287.34	-243.93	40°12'11.943"N	104°39'55.556"W	0.48	
2306.00	16.800	315.990	2256.98	-298.21	306.87	-262.48	40°12'12.137"N	104°39'55.795"W	0.32	
2399.00	16.480	315.060	2346.09	-316.60	325.88	-281.14	40°12'12.324"N	104°39'56.035"W	0.45	
2492.00	16.320	318.200	2435.31	-335.09	344.96	-299.16	40°12'12.513"N	104°39'56.268"W	0.97	
2585.00	16.040	316.760	2524.62	-353.61	364.06	-316.68	40°12'12.702"N	104°39'56.493"W	0.53	
2678.00	16.090	319.940	2613.99	-372.27	383.28	-333.77	40°12'12.892"N	104°39'56.714"W	0.95	
2771.00	15.890	318.620	2703.40	-391.13	402.70	-350.48	40°12'13.083"N	104°39'56.929"W	0.45	
2864.00	17.090	322.610	2792.57	-410.99	423.11	-367.20	40°12'13.285"N	104°39'57.144"W	1.77	
2953.00	17.280	321.340	2877.60	-431.17	443.82	-383.40	40°12'13.490"N	104°39'57.353"W	0.47	
3043.00	17.140	319.740	2963.57	-451.17	464.38	-400.32	40°12'13.693"N	104°39'57.571"W	0.55	
3133.00	16.960	318.230	3049.62	-470.51	484.29	-417.63	40°12'13.890"N	104°39'57.794"W	0.53	
3223.00	15.950	315.860	3135.93	-488.60	502.95	-434.99	40°12'14.074"N	104°39'58.018"W	1.35	
3312.00	16.210	321.250	3221.45	-506.53	521.42	-451.28	40°12'14.257"N	104°39'58.228"W	1.70	
3402.00	15.410	318.310	3308.05	-524.74	540.15	-467.10	40°12'14.442"N	104°39'58.432"W	1.26	
3491.00	15.520	321.580	3393.83	-542.39	558.31	-482.36	40°12'14.621"N	104°39'58.629"W	0.99	

REFERENCE WELLPATH IDENTIFICATION			
Operator	KERR-MCGEE OIL & GAS ONSHORE LP (WA)	Slot	SLOT#36 CREAM 36N-28HZ (421'FNL & 1480'FEL, SEC.28)
Area	COLORADO	Well	CREAM 36N-28HZ
Field	WELD COUNTY (UTM/TRUE NORTH)	Wellbore	CREAM 36N-28HZ AWB <12600>
Facility	SEC.28-T3N-R65W		

WELLPATH DATA (152 stations)										
MD [ft]	Inclination [°]	Azimuth [°]	TVD [ft]	Vert Sect [ft]	North [ft]	East [ft]	Latitude	Longitude	DLS [°/100ft]	Comments
3580.00	14.560	319.690	3479.78	-559.77	576.17	-497.00	40°12'14.798"N	104°39'58.817"W	1.21	
3670.00	14.970	323.740	3566.81	-577.30	594.17	-511.19	40°12'14.975"N	104°39'59.000"W	1.23	
3760.00	16.070	322.970	3653.53	-596.14	613.48	-525.57	40°12'15.166"N	104°39'59.186"W	1.24	
3850.00	16.750	322.460	3739.86	-615.86	633.71	-540.97	40°12'15.366"N	104°39'59.384"W	0.77	
3940.00	15.450	321.870	3826.33	-635.07	653.43	-556.28	40°12'15.561"N	104°39'59.581"W	1.46	
4030.00	17.200	322.940	3912.70	-654.61	673.48	-571.70	40°12'15.759"N	104°39'59.780"W	1.97	
4119.00	17.040	322.180	3997.75	-674.88	694.28	-587.63	40°12'15.965"N	104°39'59.985"W	0.31	
4209.00	16.670	322.970	4083.89	-694.79	714.72	-603.84	40°12'16.167"N	104°40'00.194"W	0.57	
4299.00	14.980	318.440	4170.47	-713.00	733.46	-619.69	40°12'16.352"N	104°40'00.399"W	2.03	
4389.00	15.720	318.580	4257.26	-730.33	751.30	-635.47	40°12'16.528"N	104°40'00.602"W	0.82	
4479.00	17.690	323.110	4343.46	-749.87	771.38	-651.75	40°12'16.727"N	104°40'00.812"W	2.62	
4568.00	15.880	322.640	4428.67	-769.85	791.88	-667.26	40°12'16.929"N	104°40'01.012"W	2.04	
4658.00	17.230	322.640	4514.93	-789.72	812.26	-682.82	40°12'17.131"N	104°40'01.212"W	1.50	
4748.00	16.290	322.350	4601.11	-809.79	832.85	-698.62	40°12'17.334"N	104°40'01.416"W	1.05	
4838.00	14.280	317.870	4687.93	-827.51	851.08	-713.77	40°12'17.514"N	104°40'01.611"W	2.59	
4928.00	12.580	315.810	4775.46	-842.31	866.34	-728.05	40°12'17.665"N	104°40'01.795"W	1.96	
5018.00	11.630	315.400	4863.46	-855.36	879.83	-741.25	40°12'17.798"N	104°40'01.965"W	1.06	
5107.00	10.040	312.740	4950.87	-866.62	891.48	-753.25	40°12'17.913"N	104°40'02.120"W	1.87	
5197.00	11.920	317.020	5039.22	-878.34	903.61	-765.35	40°12'18.033"N	104°40'02.276"W	2.28	
5287.00	10.990	314.820	5127.43	-890.78	916.45	-777.77	40°12'18.160"N	104°40'02.436"W	1.14	
5377.00	8.500	315.040	5216.12	-901.18	927.21	-788.56	40°12'18.267"N	104°40'02.575"W	2.77	
5466.00	7.310	313.900	5304.27	-909.48	935.79	-797.29	40°12'18.351"N	104°40'02.688"W	1.35	
5556.00	5.370	306.580	5393.72	-915.71	942.27	-804.80	40°12'18.415"N	104°40'02.784"W	2.33	
5646.00	3.810	301.880	5483.43	-919.60	946.36	-810.72	40°12'18.456"N	104°40'02.861"W	1.78	
5736.00	1.020	286.250	5573.34	-921.30	948.16	-814.03	40°12'18.474"N	104°40'02.903"W	3.16	
5826.00	0.830	91.110	5663.34	-921.51	948.37	-814.14	40°12'18.476"N	104°40'02.905"W	2.04	
5915.00	1.170	92.340	5752.32	-921.51	948.32	-812.59	40°12'18.475"N	104°40'02.885"W	0.38	
6005.00	1.350	81.390	5842.30	-921.69	948.45	-810.62	40°12'18.476"N	104°40'02.860"W	0.33	
6095.00	0.560	24.850	5932.29	-922.29	949.00	-809.39	40°12'18.482"N	104°40'02.844"W	1.27	
6185.00	0.580	6.220	6022.29	-923.15	949.86	-809.16	40°12'18.490"N	104°40'02.841"W	0.21	
6275.00	1.250	170.510	6112.28	-922.64	949.34	-808.95	40°12'18.485"N	104°40'02.838"W	2.02	
6364.00	1.060	154.810	6201.26	-920.96	947.64	-808.44	40°12'18.468"N	104°40'02.831"W	0.41	
6491.00	0.800	145.690	6328.25	-919.19	945.84	-807.44	40°12'18.451"N	104°40'02.818"W	0.23	
6544.00	2.630	162.460	6381.22	-917.75	944.38	-806.86	40°12'18.436"N	104°40'02.811"W	3.54	
6589.00	8.170	172.940	6426.00	-913.61	940.22	-806.16	40°12'18.395"N	104°40'02.802"W	12.45	
6634.00	13.560	173.410	6470.18	-905.23	931.80	-805.16	40°12'18.312"N	104°40'02.789"W	11.98	
6723.00	20.640	176.500	6555.19	-879.26	905.74	-803.00	40°12'18.054"N	104°40'02.761"W	8.02	
6813.00	27.350	178.260	6637.37	-842.79	869.20	-801.40	40°12'17.693"N	104°40'02.741"W	7.50	
6903.00	35.650	185.270	6714.07	-795.88	822.32	-803.19	40°12'17.230"N	104°40'02.764"W	10.07	
6993.00	43.120	184.750	6783.58	-738.90	765.47	-808.15	40°12'16.668"N	104°40'02.828"W	8.31	
7082.00	53.220	182.820	6842.86	-672.71	699.39	-812.43	40°12'16.015"N	104°40'02.883"W	11.46	
7172.00	60.350	183.070	6892.13	-597.47	624.24	-816.31	40°12'15.273"N	104°40'02.933"W	7.93	
7262.00	66.810	181.230	6932.16	-516.92	543.74	-819.29	40°12'14.477"N	104°40'02.971"W	7.41	
7307.00	68.430	180.880	6949.29	-475.32	502.14	-820.06	40°12'14.066"N	104°40'02.981"W	3.67	
7352.00	70.420	181.300	6965.10	-433.19	460.02	-820.86	40°12'13.650"N	104°40'02.991"W	4.51	

REFERENCE WELLPATH IDENTIFICATION			
Operator	KERR-MCGEE OIL & GAS ONSHORE LP (WA)	Slot	SLOT#36 CREAM 36N-28HZ (421'FNL & 1480'FEL, SEC.28)
Area	COLORADO	Well	CREAM 36N-28HZ
Field	WELD COUNTY (UTM/TRUE NORTH)	Wellbore	CREAM 36N-28HZ AWB <12600>
Facility	SEC.28-T3N-R65W		

WELLPATH DATA (152 stations) † = interpolated/extrapolated station										
MD [ft]	Inclination [°]	Azimuth [°]	TVD [ft]	Vert Sect [ft]	North [ft]	East [ft]	Latitude	Longitude	DLS [°/100ft]	Comments
7397.00	72.320	181.810	6979.48	-390.55	417.40	-822.02	40°12'13.229"N	104°40'03.006"W	4.36	
7441.00	77.040	181.950	6991.10	-348.13	374.99	-823.41	40°12'12.810"N	104°40'03.024"W	10.73	
7488.00	80.650	182.270	7000.19	-302.02	328.92	-825.11	40°12'12.354"N	104°40'03.046"W	7.71	
7513.00	83.050	183.640	7003.74	-277.28	304.21	-826.38	40°12'12.110"N	104°40'03.062"W	11.03	
7552.00†	85.935	184.085	7007.48	-238.49	265.48	-829.00	40°12'11.727"N	104°40'03.096"W	7.48	7" Casing Point
7571.00	87.340	184.300	7008.59	-219.54	246.56	-830.39	40°12'11.540"N	104°40'03.114"W	7.48	
7616.00	87.590	183.540	7010.58	-174.61	201.71	-833.46	40°12'11.097"N	104°40'03.154"W	1.78	
7706.00	89.410	184.120	7012.94	-84.70	111.95	-839.47	40°12'10.210"N	104°40'03.231"W	2.12	
7796.00	91.070	183.650	7012.56	5.24	22.16	-845.57	40°12'09.323"N	104°40'03.309"W	1.92	
7885.00	92.150	183.140	7010.06	94.17	-66.65	-850.84	40°12'08.445"N	104°40'03.377"W	1.34	
7975.00	92.610	182.170	7006.32	184.08	-156.47	-855.00	40°12'07.558"N	104°40'03.431"W	1.19	
8065.00	92.180	181.720	7002.56	274.00	-246.34	-858.05	40°12'06.670"N	104°40'03.470"W	0.69	
8153.00	91.560	179.740	6999.69	361.93	-334.28	-859.17	40°12'05.800"N	104°40'03.485"W	2.36	
8243.00	90.400	179.860	6998.15	451.86	-424.27	-858.86	40°12'04.911"N	104°40'03.481"W	1.30	
8333.00	91.070	179.580	6997.00	541.79	-514.26	-858.42	40°12'04.022"N	104°40'03.475"W	0.81	
8423.00	90.390	179.270	6995.85	631.70	-604.24	-857.52	40°12'03.133"N	104°40'03.463"W	0.83	
8512.00	90.700	179.020	6995.00	720.60	-693.23	-856.19	40°12'02.253"N	104°40'03.446"W	0.45	
8602.00	90.580	180.380	6994.00	810.52	-783.22	-855.72	40°12'01.364"N	104°40'03.440"W	1.52	
8692.00	90.330	179.720	6993.28	900.48	-873.22	-855.80	40°12'00.475"N	104°40'03.441"W	0.78	
8782.00	90.360	180.810	6992.74	990.44	-963.21	-856.21	40°11'59.585"N	104°40'03.446"W	1.21	
8872.00	91.160	181.460	6991.55	1080.42	-1053.19	-857.99	40°11'58.696"N	104°40'03.469"W	1.15	
8962.00	91.100	181.320	6989.77	1170.40	-1143.14	-860.18	40°11'57.807"N	104°40'03.497"W	0.17	
9052.00	91.040	181.220	6988.09	1260.38	-1233.10	-862.17	40°11'56.918"N	104°40'03.523"W	0.13	
9141.00	91.040	180.890	6986.48	1349.36	-1322.07	-863.81	40°11'56.039"N	104°40'03.544"W	0.37	
9231.00	90.920	182.010	6984.94	1439.34	-1412.03	-866.09	40°11'55.150"N	104°40'03.573"W	1.25	
9321.00	90.980	182.130	6983.45	1529.33	-1501.96	-869.34	40°11'54.262"N	104°40'03.615"W	0.15	
9411.00	90.800	181.840	6982.05	1619.32	-1591.90	-872.45	40°11'53.373"N	104°40'03.655"W	0.38	
9501.00	90.360	181.620	6981.14	1709.31	-1681.85	-875.17	40°11'52.484"N	104°40'03.690"W	0.55	
9591.00	91.510	181.380	6979.67	1799.30	-1771.80	-877.53	40°11'51.595"N	104°40'03.721"W	1.31	
9680.00	91.100	182.810	6977.64	1888.27	-1860.72	-880.78	40°11'50.716"N	104°40'03.762"W	1.67	
9770.00	91.230	182.220	6975.81	1978.25	-1950.61	-884.73	40°11'49.828"N	104°40'03.813"W	0.67	
9860.00	91.100	182.030	6973.98	2068.23	-2040.53	-888.06	40°11'48.939"N	104°40'03.856"W	0.26	
9950.00	91.140	182.250	6972.22	2158.21	-2130.45	-891.42	40°11'48.051"N	104°40'03.899"W	0.25	
10129.00	90.950	182.020	6968.96	2337.18	-2309.30	-898.09	40°11'46.283"N	104°40'03.985"W	0.17	
10219.00	90.830	182.280	6967.56	2427.16	-2399.23	-901.47	40°11'45.395"N	104°40'04.029"W	0.32	
10309.00	90.270	181.940	6966.70	2517.16	-2489.16	-904.78	40°11'44.506"N	104°40'04.071"W	0.73	
10399.00	91.160	183.210	6965.57	2607.14	-2579.06	-908.82	40°11'43.618"N	104°40'04.124"W	1.72	
10488.00	92.180	183.110	6962.98	2696.08	-2667.88	-913.73	40°11'42.740"N	104°40'04.187"W	1.15	
10578.00	91.350	183.130	6960.21	2786.01	-2757.71	-918.62	40°11'41.852"N	104°40'04.250"W	0.92	
10668.00	90.390	183.080	6958.84	2875.98	-2847.56	-923.50	40°11'40.964"N	104°40'04.312"W	1.07	
10758.00	90.890	182.910	6957.84	2965.96	-2937.44	-928.20	40°11'40.076"N	104°40'04.373"W	0.59	
10847.00	91.260	182.980	6956.17	3054.92	-3026.30	-932.77	40°11'39.198"N	104°40'04.432"W	0.42	
10937.00	90.180	183.240	6955.03	3144.89	-3116.16	-937.65	40°11'38.310"N	104°40'04.495"W	1.23	
11027.00	90.700	183.630	6954.34	3234.86	-3206.00	-943.05	40°11'37.422"N	104°40'04.564"W	0.72	
11117.00	90.330	183.090	6953.53	3324.82	-3295.84	-948.32	40°11'36.534"N	104°40'04.632"W	0.73	

REFERENCE WELLPATH IDENTIFICATION			
Operator	KERR-MCGEE OIL & GAS ONSHORE LP (WA)	Slot	SLOT#36 CREAM 36N-28HZ (421'FNL & 1480'FEL, SEC.28)
Area	COLORADO	Well	CREAM 36N-28HZ
Field	WELD COUNTY (UTM/TRUE NORTH)	Wellbore	CREAM 36N-28HZ AWB <12600>
Facility	SEC.28-T3N-R65W		

WELLPATH DATA (152 stations)										
MD [ft]	Inclination [°]	Azimuth [°]	TVD [ft]	Vert Sect [ft]	North [ft]	East [ft]	Latitude	Longitude	DLS [°/100ft]	Comments
11206.00	89.930	181.390	6953.33	3413.82	-3384.77	-951.80	40°11'35.656"N	104°40'04.677"W	1.96	
11296.00	89.690	182.310	6953.63	3503.81	-3474.72	-954.71	40°11'34.767"N	104°40'04.714"W	1.06	
11386.00	90.490	182.780	6953.49	3593.81	-3564.63	-958.70	40°11'33.878"N	104°40'04.766"W	1.03	
11476.00	90.640	183.620	6952.60	3683.78	-3654.48	-963.73	40°11'32.990"N	104°40'04.830"W	0.95	
11565.00	90.800	184.680	6951.48	3772.70	-3743.24	-970.17	40°11'32.113"N	104°40'04.913"W	1.20	
11656.00	91.100	184.580	6949.98	3863.58	-3833.93	-977.51	40°11'31.217"N	104°40'05.008"W	0.35	
11745.00	90.830	183.400	6948.48	3952.50	-3922.70	-983.70	40°11'30.340"N	104°40'05.088"W	1.36	
11835.00	90.240	181.400	6947.64	4042.49	-4012.61	-987.47	40°11'29.451"N	104°40'05.136"W	2.32	
11925.00	89.630	181.640	6947.74	4132.49	-4102.58	-989.86	40°11'28.562"N	104°40'05.167"W	0.73	
12015.00	90.180	182.510	6947.89	4222.49	-4192.52	-993.12	40°11'27.673"N	104°40'05.209"W	1.14	
12104.00	91.010	182.520	6946.96	4311.47	-4281.43	-997.02	40°11'26.795"N	104°40'05.259"W	0.93	
12194.00	90.800	180.380	6945.54	4401.46	-4371.38	-999.30	40°11'25.906"N	104°40'05.288"W	2.39	
12284.00	89.810	180.230	6945.06	4491.42	-4461.38	-999.78	40°11'25.016"N	104°40'05.295"W	1.11	
12374.00	90.550	179.440	6944.78	4581.36	-4551.38	-999.52	40°11'24.127"N	104°40'05.291"W	1.20	
12464.00	90.770	178.650	6943.74	4671.25	-4641.36	-998.02	40°11'23.238"N	104°40'05.272"W	0.91	
12546.00	91.570	179.900	6942.07	4753.14	-4723.33	-996.98	40°11'22.428"N	104°40'05.258"W	1.81	Last BHI MWD+IFR Surveys
12600.00	91.570	179.900	6940.59	4807.09	-4777.31	-996.89	40°11'21.894"N	104°40'05.257"W	0.00	Projection to Bit

HOLE & CASING SECTIONS - Ref Wellbore: CREAM 36N-28HZ AWB <12600> Ref Wellpath: CREAM 36N-28HZ PWP									
String/Diameter	Start MD [ft]	End MD [ft]	Interval [ft]	Start TVD [ft]	End TVD [ft]	Start N/S [ft]	Start E/W [ft]	End N/S [ft]	End E/W [ft]
13.5in Open Hole	20.00	1212.00	1192.00	20.00	1203.51	0.00	0.00	86.72	-68.07
9.625in Casing Surface	20.00	1202.00	1182.00	20.00	1193.77	0.00	0.00	85.08	-66.50
8.75in Open Hole	1212.00	7562.00	6350.00	1203.51	7008.12	86.72	-68.07	255.53	-829.72
7in Casing Intermediate	20.00	7552.00	7532.00	20.00	7007.48	0.00	0.00	265.48	-829.00
6.125in Open Hole	7562.00	12600.00	5038.00	7008.12	6940.59	255.53	-829.72	-4777.31	-996.89

TARGETS								
Name	TVD [ft]	North [ft]	East [ft]	Grid East [US ft]	Grid North [US ft]	Latitude	Longitude	Shape
SEC.21-T3N-R65W LINES	0.00	-0.71	104.98	1734184.18	14600660.39	40°12'09.097"N	104°39'51.059"W	polygon
SEC.28-T3N-R65W LINES	0.00	-0.71	104.98	1734184.18	14600660.39	40°12'09.097"N	104°39'51.059"W	polygon
CREAM 36N-28HZ BHL ON PLAT (50'FSL & 2488'FEL, SEC.28) REV-1	6924.00	-4817.80	-986.55	1733111.27	14595841.10	40°11'21.494"N	104°40'05.124"W	point
CREAM 36N-28HZ LANDBOX	6924.00	0.00	0.00	1734079.23	14600660.70	40°12'09.104"N	104°39'52.412"W	polygon



Actual Wellpath Report
CREAM 36N-28HZ PWP
Page 6 of 7



REFERENCE WELLPATH IDENTIFICATION			
Operator	KERR-MCGEE OIL & GAS ONSHORE LP (WA)	Slot	SLOT#36 CREAM 36N-28HZ (421'FNL & 1480'FEL, SEC.28)
Area	COLORADO	Well	CREAM 36N-28HZ
Field	WELD COUNTY (UTM/TRUE NORTH)	Wellbore	CREAM 36N-28HZ AWB <12600>
Facility	SEC.28-T3N-R65W		

WELLPATH COMPOSITION - Ref Wellbore: CREAM 36N-28HZ AWB <12600>				Ref Wellpath: CREAM 36N-28HZ PWP
Start MD [ft]	End MD [ft]	Positional Uncertainty Model	Log Name/Comment	Wellbore
20.00	1167.00	Custom APC_ISCWSA REV 2 MWD	CATHEDRAL ENERGY MWD SURVEYS <99-1167>	CREAM 36N-28HZ AWB <12600>
1167.00	7706.00	Custom APC_ISCWSA REV 2 MWD+IFR1+SC (approximation)	BHI MWD+IFR SURVEYS 8 3/4" HOLE <1208-7706>	CREAM 36N-28HZ AWB <12600>
7706.00	12546.00	Custom APC_ISCWSA REV 2 MWD+IFR1+SC (approximation)	BHI MWD+IFR SURVEYS 6 1/8" HOLE <7796-12546>	CREAM 36N-28HZ AWB <12600>
12546.00	12600.00	Blind Drilling (std)	Projection to bit	CREAM 36N-28HZ AWB <12600>



Actual Wellpath Report
CREAM 36N-28HZ PWP
Page 7 of 7



REFERENCE WELLPATH IDENTIFICATION			
Operator	KERR-MCGEE OIL & GAS ONSHORE LP (WA)	Slot	SLOT#36 CREAM 36N-28HZ (421'FNL & 1480'FEL, SEC.28)
Area	COLORADO	Well	CREAM 36N-28HZ
Field	WELD COUNTY (UTM/TRUE NORTH)	Wellbore	CREAM 36N-28HZ AWB <12600>
Facility	SEC.28-T3N-R65W		

WELLPATH COMMENTS				
MD [ft]	Inclination [°]	Azimuth [°]	TVD [ft]	Comment
20.00	0.000	254.400	20.00	Tie-On
99.00	0.040	254.400	99.00	Begin CATHEDRAL MWD Surveys
1167.00	13.000	316.000	1159.68	Tie-Into CATHEDRAL MWD Surveys
1280.00	13.440	316.410	1269.68	Begin BHI MWD+IFR Surveys
7552.00	85.935	184.085	7007.48	7" Casing Point
12546.00	91.570	179.900	6942.07	Last BHI MWD+IFR Surveys
12600.00	91.570	179.900	6940.59	Projection to Bit