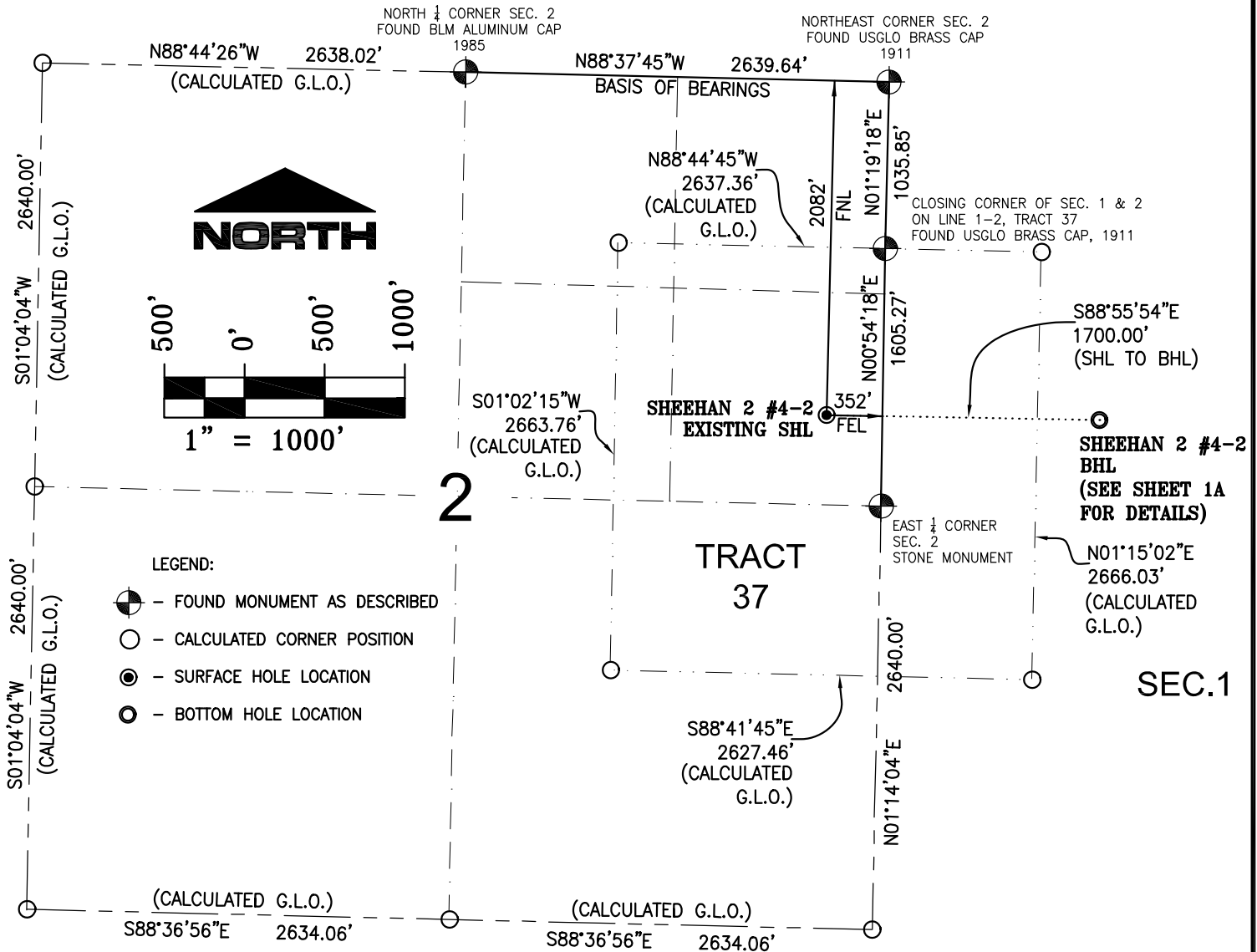


T. 10 N., R. 89 W., 6th P.M., MOFFAT COUNTY, COLORADO



OPERATOR: PETROLEUM RESOURCE MANAGEMENT CORP.

NOTES:

1. GEODETIC POSITIONS ARE SHOWN IN DECIMAL DEGREES, NAD83 (2011).
2. UNITS OF LINEAR MEASUREMENT: U.S. SURVEY FOOT
3. ELEVATIONS ARE BASED ON GPS OBSERVATIONS USING OPUS, GEOID 12, NAVD88.
4. ALL SURFACE (SHL) AND BOTTOM (BHL) HOLE LOCATIONS AND LANDING POINT LOCATIONS ARE MEASURED AT 90° ANGLES FROM MEASURED SECTION LINES. PROPOSED LOCATIONS HAVE BEEN PROVIDED BY THE CLIENT.
5. BASIS OF BEARING: N88°37'45"W BETWEEN FOUND MONUMENTS AS SHOWN HEREON.
6. EXISTING GROUND ELEVATION AT EXISTING PAD: 8268.73'.
7. GPS OPERATOR: KYLE TESKY OBSERVED AN AVERAGE PDOP OF ≤ 3.0 FOR ALL SURVEY MEASUREMENTS DEPICTED ON THIS AND SUBSEQUENT SHEETS. ALL GPS OBSERVATIONS ARE IN COMPLIANCE WITH COGCC RULE NO. 215
8. SURFACE USE: EXISTING WELL PAD
9. USGS QUAD MAP: BUCK POINT

SURVEYORS STATEMENT:

I, ROBERT E. BRANDEBERRY, BEING A REGISTERED LAND SURVEYOR IN THE STATE OF COLORADO, HEREBY CERTIFY THAT THIS PLAT REPRESENTS A SURVEY PERFORMED BY ME OR UNDER MY DIRECT SUPERVISION ON NOVEMBER 28, 2013 AND IS TRUE TO THE BEST OF MY KNOWLEDGE AND BELIEF.

ROBERT E. BRANDEBERRY
COLORADO LS 38388
12/16/13

WELL NAME	SECTION	LINE	TIES	NAD 83(2011) COORDINATE
SHEEHAN 2 #4-2	FOOTAGES	FOOTAGES		LATITUDE
SURFACE HOLE LOCATION	2082' FNL	352' FEL		40.852630°N 107.336553°W
BOTTOM HOLE LOCATION	2076' FNL	1348' FWL		40.852640°N 107.330411°W

Petroleum Resource
Management Corp.



Scale: 1" = 1000'

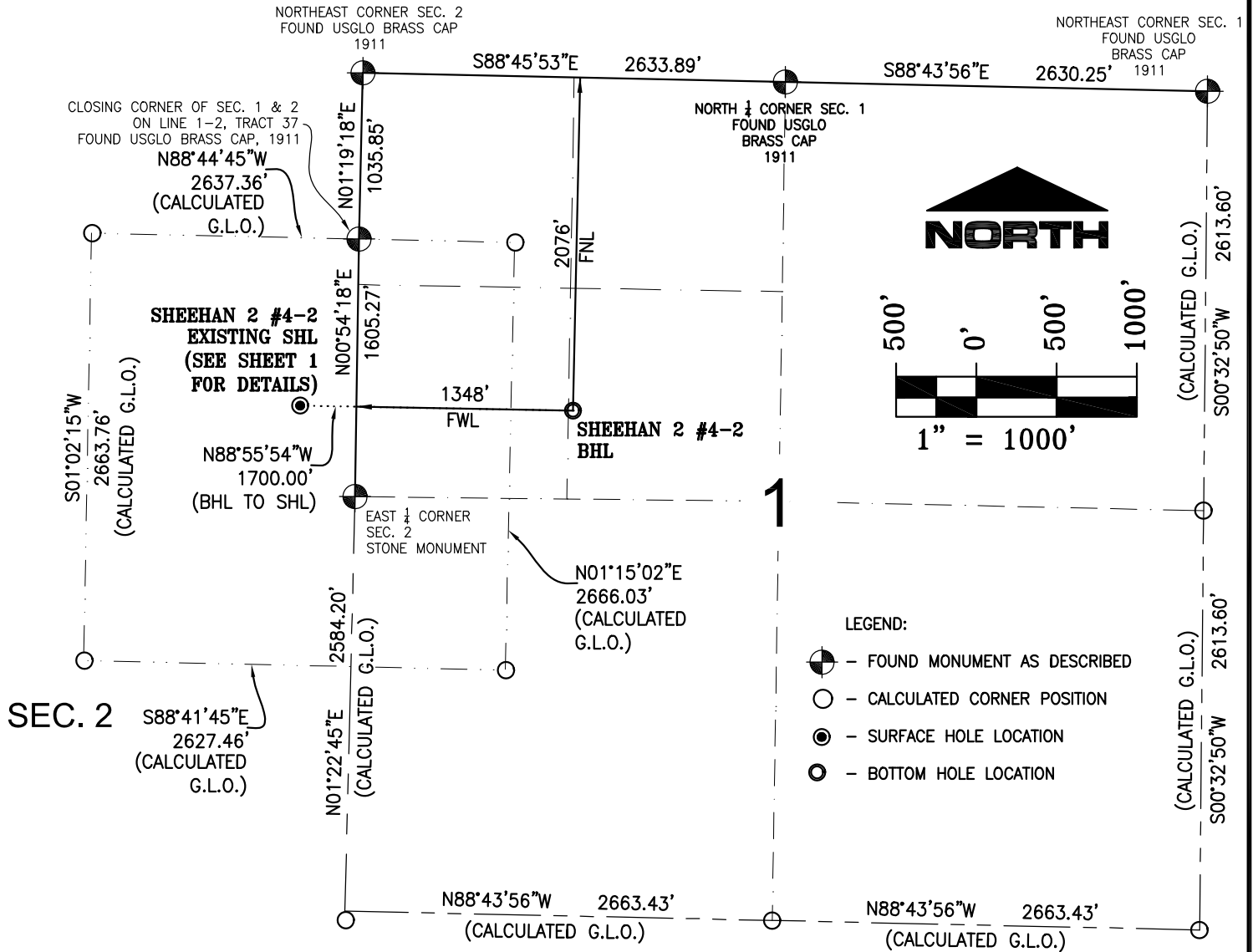
Sheet 1

WLP

WELL LOCATION PLAT - SHEEHAN 2 #4-2
SHL LOCATED IN SE1/4NE1/4 SECTION 2, T.10N., R.89W., 6TH P.M.

Job# 2013-379.001 Date: 12/14/13 By: REB File: Duncan_APD

T. 10 N., R. 89 W., 6th P.M., MOFFAT COUNTY, COLORADO



OPERATOR: PETROLEUM RESOURCE MANAGEMENT CORP.

NOTES:

1. GEODETIC POSITIONS ARE SHOWN IN DECIMAL DEGREES, NAD83 (2011).
2. UNITS OF LINEAR MEASUREMENT: U.S. SURVEY FOOT
3. ELEVATIONS ARE BASED ON GPS OBSERVATIONS USING OPUS, GEOID 12, NAVD88.
4. ALL SURFACE (SHL) AND BOTTOM (BHL) HOLE LOCATIONS AND LANDING POINT LOCATIONS ARE MEASURED AT 90° ANGLES FROM MEASURED SECTION LINES. PROPOSED LOCATIONS HAVE BEEN PROVIDED BY THE CLIENT.
5. BASIS OF BEARING: N88°37'45"W BETWEEN FOUND MONUMENTS AS SHOWN ON SHEET 1.
6. EXISTING GROUND ELEVATION AT EXISTING PAD: 8268.73'
7. GPS OPERATOR: KYLE TESKY OBSERVED AN AVERAGE PDOP OF ≤ 3.0 FOR ALL SURVEY MEASUREMENTS DEPICTED ON THIS AND SUBSEQUENT SHEETS. ALL GPS OBSERVATIONS ARE IN COMPLIANCE WITH COGCC RULE NO. 215
8. SURFACE USE: EXISTING WELL PAD
9. USGS QUAD MAP: BUCK POINT

SURVEYORS STATEMENT:

I, ROBERT E. BRANDEBERRY, BEING A REGISTERED LAND SURVEYOR IN THE STATE OF COLORADO, HEREBY CERTIFY THAT THIS PLAT REPRESENTS A SURVEY PERFORMED BY ME OR UNDER MY DIRECT SUPERVISION ON NOVEMBER 26, 2013 AND IS TRUE TO THE BEST OF MY KNOWLEDGE AND BELIEF.

ROBERT E. BRANDEBERRY
COLORADO LS 38388
12/16/13

WELL NAME	SECTION	LINE	TIES	NAD 83(2011)	COORDINATE
SHEEHAN 2 #4-2	FOOTAGES	FOOTAGES		LATITUDE	LONGITUDE
SURFACE HOLE LOCATION	2082' FNL	352' FEL		40.852630°N	107.336553°W
BOTTOM HOLE LOCATION	2076' FNL	1348' FWL		40.852640°N	107.330411°W

Petroleum Resource Management Corp.



Scale: 1" = 1000'

Sheet 1A

WLP

WELL LOCATION PLAT - SHEEHAN 2 #4-2

BHL LOCATED IN SE1/4NW1/4 SECTION1, T.10N., R.89W., 6TH P.M.

Job# 2013-379.001 Date: 12/14/13 By: REB File: Duncan_APD