



Corporate Office

1775 Sherman Street, #3000
Denver, Colorado 80203
303.860.5800
www.pdce.com

July 23, 2015

State of Colorado, Oil & Gas Conservation Commission
Attn: Matt Lepore
1120 Lincoln Street, Suite 801
Denver, CO 80203

Re: **Letter to the Director, Rule 318A.e.**
Lajco 17R-303
NWNE, Section 17 T4N R67W
Weld County, Colorado

Dear Director:

PDC Energy ("PDC") hereby certifies to the Director that PDC holds all minerals in the proposed 320 acre wellbore spacing unit consisting of the E2 of Section 17 T4N R67W; therefore, no 30-day notice is needed to owners in the proposed wellbore spacing unit. This horizontal well location crosses existing unit boundaries and requires the formation of the proposed unit. PDC hereby requests the Director to approve the well.

If you should have any questions or concerns regarding this permit, please contact the undersigned at (303) 831-3974 or Kelsi.Welch@pdce.com.

Sincerely,

A handwritten signature in black ink that reads "Kelsi Welch".

Kelsi Welch
Regulatory Analyst
PDC Energy, Inc.

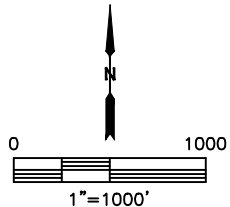
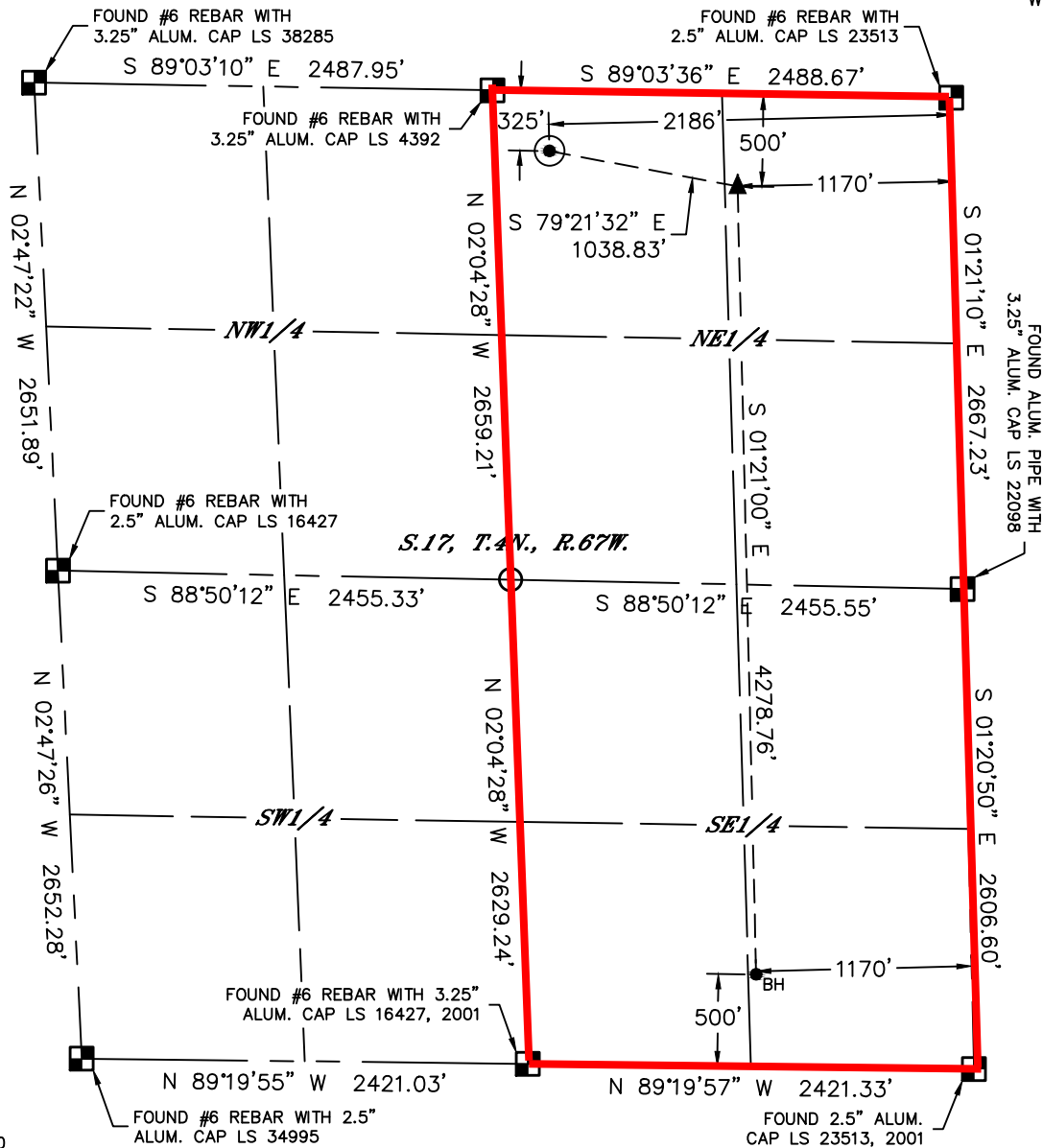


Lat40°, Inc. 6250 W. 10th Street, Unit 2, Greeley, CO 970-515-5294

WELL LOCATION CERTIFICATE

LAJCO 17R-303

SECTION: 17
TOWNSHIP: 4N
RANGE: 67W
6TH. P.M.
WELD COUNTY, CO



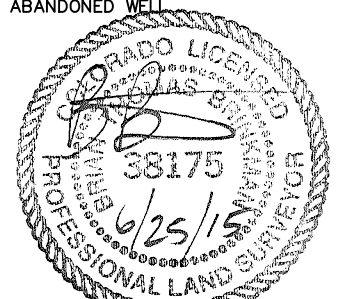
| | | | | | | | | | |
|--|-----|------|-----------|----------|-----------------------|----------|------------------------|-------------|-----------|
| CLIENT: PDC ENERGY | | | | | LANDMAN: MAC NEUMANN | | | | |
| INSTRUMENT OPERATOR: BRIAN ROTTINGHAUS | | | | | SURVEY DATE: 6/9/2015 | | SURFACE USE: CROP LAND | | |
| SHL FOOTAGE | | | SHL LAT ° | | SHL LONG ° | SHL PDOP | SHL ELEV (FT.) | SHL 1/4/1/4 | SHL S-T-R |
| 325 | FNL | 2186 | FEL | 40.31937 | -104.91381 | 1.6 | 4794 | NWNE | 17-4-67 |

| BHL FOOTAGE | | | | BHL LAT ° | BHL LONG ° | BHL S-T-R | EP LAT ° | EP LONG ° | EP S-T-R |
|-------------|-----|------|-----|-----------|------------|-----------|----------|------------|----------|
| 500 | FSL | 1170 | FEL | 40.30708 | -104.90989 | 17-4-67 | 40.31882 | -104.91015 | 17-4-67 |

| NEAREST CULTURAL ITEMS | |
|----------------------------------|-----------|
| BUILDING | ±1835' NE |
| BUILDING UNIT | ±1933' NW |
| HIGH OCCUPANCY BUILDING UNIT | ±3995' SE |
| DESIGNATED OUTSIDE ACTIVITY AREA | 5280'+ |
| PUBLIC ROAD (COUNTY ROAD 46) | ±313' N |
| ABOVE GROUND UTILITY | ±295' N |
| RAILROAD | ±2462' SE |
| PROPERTY LINE | ±200' W |

NOTE:
1) Bearings shown are Grid Bearings of the Colorado State Plane Coordinate System, North Zone, North American Datum 1983. The lineal dimensions as contained herein are based upon the "U.S. Survey Foot."
2) Distances to section lines measured at 90 degrees from said section lines.
3) Ground elevations are based on an observed GPS elevation (NAVD 1988 DATUM).
4) Latitude and Longitude shown are (NAD 83 DATUM).
5) IMPROVEMENTS: See LOCATION DRAWING for all visible improvements within 500' of oil and gas location.
6) This map does not represent a boundary survey.

- LEGEND
- = ALIQUOT MONUMENT AS DESCRIBED
 - = CALCULATED POSITION
 - = SURFACE HOLE LOCATION (SHL)
 - ▲ = ENTRY POINT LOCATION (EP)
 - BH = BOTTOM HOLE LOCATION (BHL)
 - ⊕ = EXISTING WELL
 - ⊙ = ABANDONED WELL



Brian T. Brinkman—On behalf of Lat40°, Inc.
Colorado Licensed Professional Land Surveyor No. 38175
DATE: 6/25/2015
PROJECT#: 2014134