

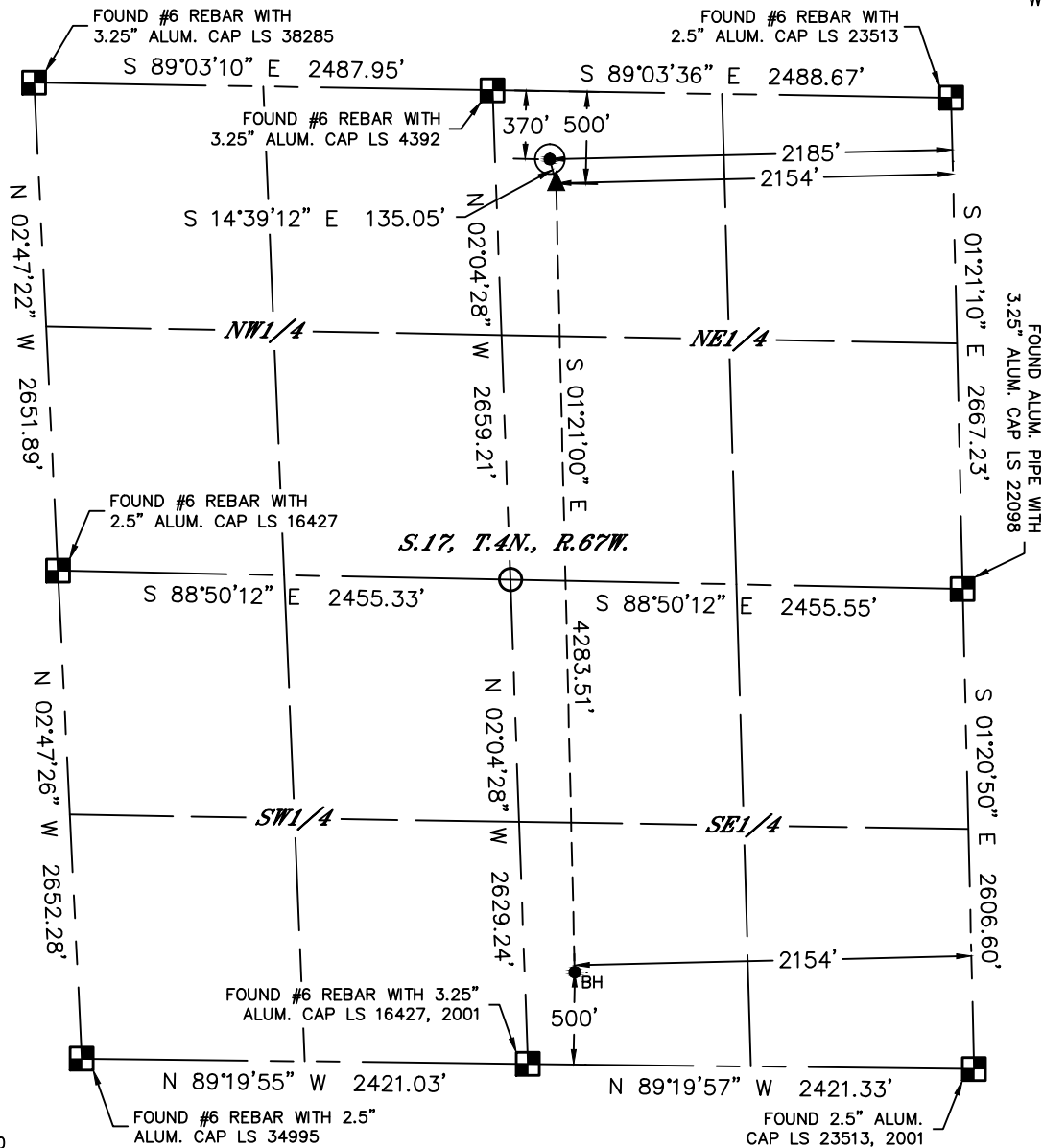


Lat40°, Inc. 6250 W. 10th Street, Unit 2, Greeley, CO 970-515-5294

WELL LOCATION CERTIFICATE

LAJCO 17M-323

SECTION: 17
TOWNSHIP: 4N
RANGE: 67W
6TH. P.M.
WELD COUNTY, CO



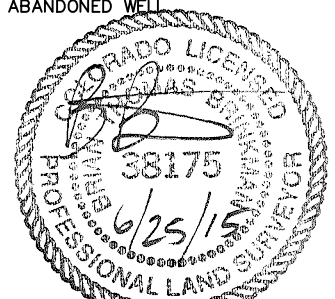
CLIENT: PDC ENERGY				LANDMAN: MAC NEUMANN		
INSTRUMENT OPERATOR: BRIAN ROTTINGHAUS				SURVEY DATE: 6/9/2015		
				SURFACE USE: CROP LAND		
SHL FOOTAGE	SHL LAT °	SHL LONG °	SHL PDOP	SHL ELEV (FT.)	SHL 1/4/1/4	SHL S-T-R
370	FNL	2185	FEL	40.31924	-104.91380	1.7

BHL FOOTAGE	BHL LAT °	BHL LONG °	BHL S-T-R	EP LAT °	EP LONG °	EP S-T-R
500	FSL	2154	FEL	40.30713	-104.91342	17-4-67

NEAREST CULTURAL ITEMS	
BUILDING	±1846' NE
BUILDING UNIT	±1975' NW
HIGH OCCUPANCY BUILDING UNIT	±3953' SE
DESIGNATED OUTSIDE ACTIVITY AREA	5280'+
PUBLIC ROAD (COUNTY ROAD 46)	±357' N
ABOVE GROUND UTILITY	±340' N
RAILROAD	±2434' SE
PROPERTY LINE	±200' W

NOTE:
1) Bearings shown are Grid Bearings of the Colorado State Plane Coordinate System, North Zone, North American Datum 1983. The lineal dimensions as contained herein are based upon the "U.S. Survey Foot."
2) Distances to section lines measured at 90 degrees from said section lines.
3) Ground elevations are based on an observed GPS elevation (NAVD 1988 DATUM).
4) Latitude and Longitude shown are (NAD 83 DATUM).
5) IMPROVEMENTS: See LOCATION DRAWING for all visible improvements within 500' of oil and gas location.
6) This map does not represent a boundary survey.

- LEGEND
- = ALIQUOT MONUMENT AS DESCRIBED
 - = CALCULATED POSITION
 - = SURFACE HOLE LOCATION (SHL)
 - ▲ = ENTRY POINT LOCATION (EP)
 - BH = BOTTOM HOLE LOCATION (BHL)
 - ⊕ = EXISTING WELL
 - ⊙ = ABANDONED WELL



Brian T. Brinkman—On behalf of Lat40°, Inc.
Colorado Licensed Professional Land Surveyor No. 38175
DATE: 6/25/2015
PROJECT#: 2014134

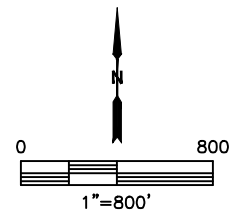
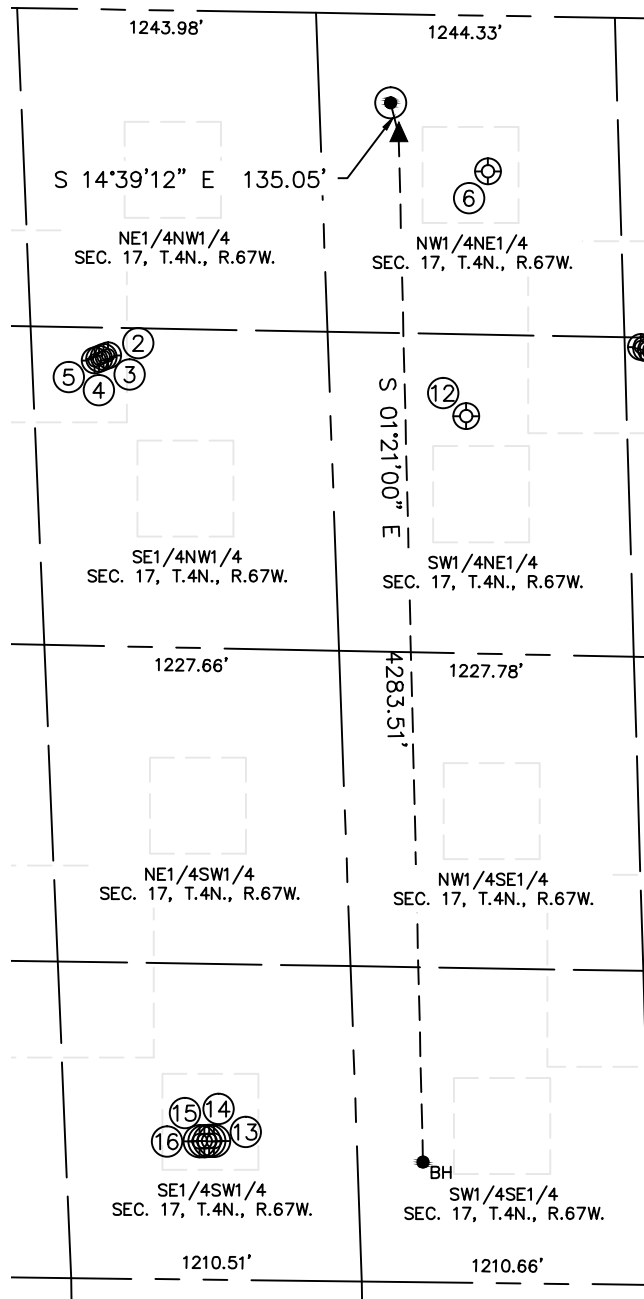


Lat40°, Inc. 6250 W. 10th Street, Unit 2, Greeley, CO 970-515-5294

SITE SKETCH

LAJCO 17M-323

SECTION: 17
TOWNSHIP: 4N
RANGE: 67W
6TH. P.M.
WELD COUNTY, CO



WELL NO.	WELL NAME	SHL FOOTAGE				SHL LAT°	SHL LONG°	PDOP	ELEV (FT.)	1/4/1/4
2	WIND 17-21	1441	FNL	1549	FWL	40.31638	-104.91804	1.8	4793	SENW
3	WIND 17-22	1448	FNL	1530	FWL	40.31636	-104.91811	2.2	4794	SENW
4	WIND 17-11	1456	FNL	1511	FWL	40.31634	-104.91817	2.6	4793	SENW
5	WIND 17-12	1464	FNL	1492	FWL	40.31632	-104.91824	2.1	4793	SENW
6	COMING 17-1	648	FNL	1787	FEL	40.31845	-104.91235	2.3	4792	NWNE
12	COMING 17-4	1670	FNL	1901	FEL	40.31566	-104.91270	1.9	4794	SWNE
13	WIND 17-23	578	FSL	1830	FWL	40.30739	-104.91654	2.0	4836	SESW
14	WIND 17-24	577	FSL	1810	FWL	40.30739	-104.91661	1.8	4836	SESW
15	WIND 17-13	576	FSL	1790	FWL	40.30739	-104.91668	2.0	4836	SESW
16	WIND 17-14	576	FSL	1770	FWL	40.30738	-104.91675	2.2	4836	SESW

DATE: 6/25/2015
PROJECT#: 2014134