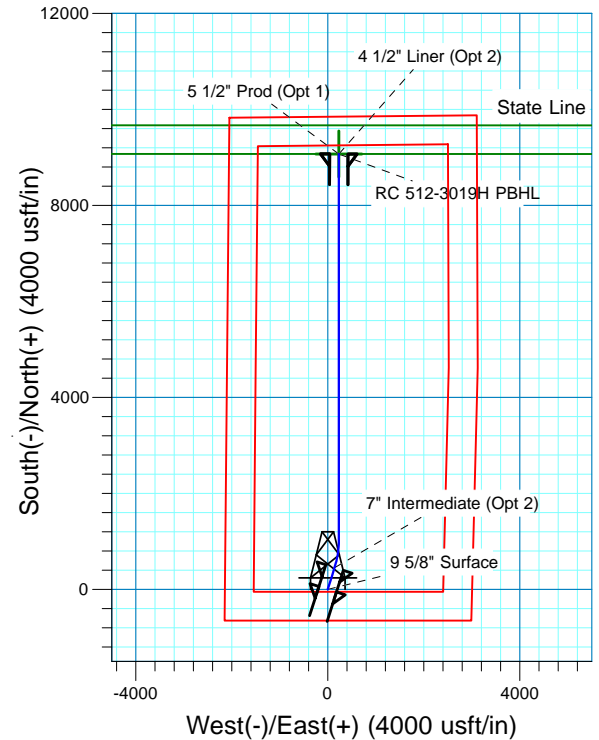
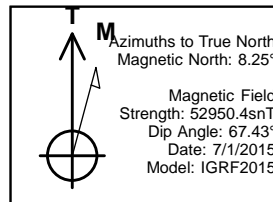
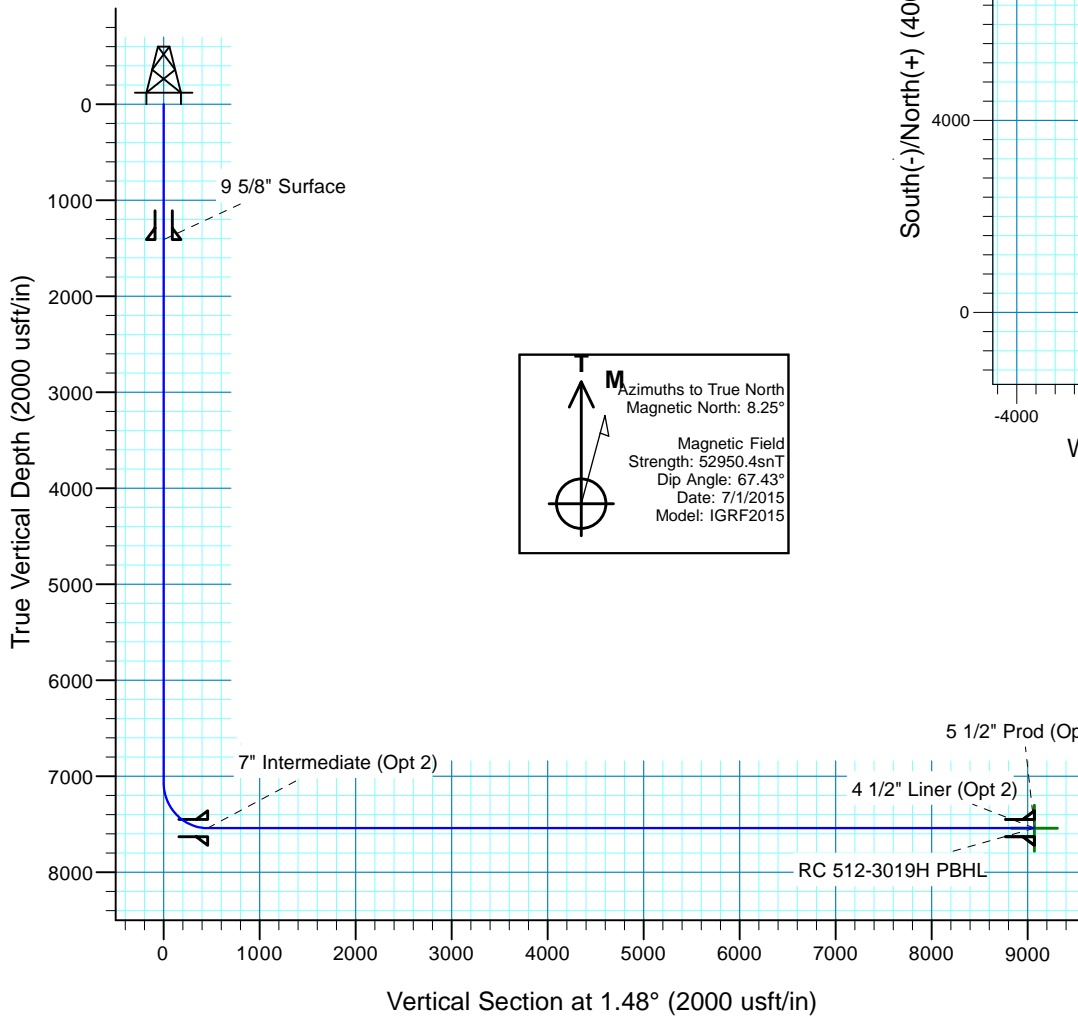




**Randall Creek 512-3019H**  
Section 30-T12N-R62W  
Weld County, CO

Project: DJ - Hereford Ranch  
Site: Randall Creek R30 SESW Pad  
Well: Randall Creek 512-3019H  
Plan: APD Plan (Plat Cert 5/29/15)

Surface Location			
NAD 1927 (NADCON CONUS) Colorado North 501			
Ground Elevation: 5380.0 RKB @ 5405.0usft (KB GL+25')			
Northing	Easting	Latitude	Longitude
600102.17	2313867.29	40° 58' 30.526 N	104° 21' 48.261 W



#### SECTION DETAILS

Sec	MD	Inc	Azi	TVD	+N/-S	+E/-W	Dleg	TFace	VSec	Target
1	0.0	0.00	0.00	0.0	0.0	0.0	0.00	0.00	0.0	
2	7064.5	0.00	0.00	7064.5	0.0	0.0	0.00	0.00	0.0	
3	7814.5	90.00	17.60	7542.0	455.1	144.4	12.00	17.60	458.7	
4	8401.0	90.00	0.00	7542.0	1032.5	233.8	3.00	-90.00	1038.2	RC 512-3019H PBHL
5	16436.9	90.00	0.00	7542.0	9068.4	234.4	0.00	0.00	9071.4	RC 512-3019H PBHL

#### TARGET DETAILS

Name	TVD	+N/-S	+E/-W	Northing	Easting	Latitude	Longitude	Shape Point
RC 512-3019H PBHL	7542.0	9068.4	234.4	609172.78	2313985.40	41° 0' 0.125 N 104° 21' 45.205 W		

# **Denver Division- Colorado**

**DJ - Hereford Ranch  
Randall Creek R30 SESW Pad  
Randall Creek 512-3019H**

**OH**

**Plan: APD Plan (Plat Cert 5/29/15)**

## **Standard Planning Report**

**01 July, 2015**

# EOG Resources, Inc.

## Planning Report

<b>Database:</b>	EDM_DENVER	<b>Local Co-ordinate Reference:</b>	Well Randall Creek 512-3019H
<b>Company:</b>	Denver Division- Colorado	<b>TVD Reference:</b>	RKB @ 5405.0usft (KB GL+25')
<b>Project:</b>	DJ - Hereford Ranch	<b>MD Reference:</b>	RKB @ 5405.0usft (KB GL+25')
<b>Site:</b>	Randall Creek R30 SESW Pad	<b>North Reference:</b>	True
<b>Well:</b>	Randall Creek 512-3019H	<b>Survey Calculation Method:</b>	Minimum Curvature
<b>Wellbore:</b>	OH		
<b>Design:</b>	APD Plan (Plat Cert 5/29/15)		

<b>Project</b>	DJ - Hereford Ranch, Weld County		
<b>Map System:</b>	US State Plane 1927 (Exact solution)	<b>System Datum:</b>	Mean Sea Level
<b>Geo Datum:</b>	NAD 1927 (NADCON CONUS)		
<b>Map Zone:</b>	Colorado North 501		

Site	Randall Creek R30 SESW Pad					
Site Position:		Northing:	600,150.00 usft	Latitude:	40° 58' 31.007 N	
From:	Map	Easting:	2,313,800.00 usft	Longitude:	104° 21' 49.130 W	
Position Uncertainty:		0.0 usft	Slot Radius:	13-3/16 "	Grid Convergence:	0.73

Well	Randall Creek 512-3019H					
Well Position	+N/-S	-48.7 usft	Northing:	600,102.17 usft	Latitude:	40° 58' 30.526 N
	+E/-W	66.7 usft	Easting:	2,313,867.29 usft	Longitude:	104° 21' 48.261 W
Position Uncertainty		0.0 usft	Wellhead Elevation:	0.0 usft	Ground Level:	5,380.0 usft

<b>Wellbore</b>	OH				
<b>Magnetics</b>	<b>Model Name</b>	<b>Sample Date</b>	<b>Declination (°)</b>	<b>Dip Angle (°)</b>	<b>Field Strength (nT)</b>
	IGRF2015	7/1/2015	8.25	67.43	52,950

<b>Design</b>	APD Plan (Plat Cert 5/29/15)				
<b>Audit Notes:</b>					
<b>Version:</b>	<b>Phase:</b>	PROTOTYPE		<b>Tie On Depth:</b>	0.0
<b>Vertical Section:</b>	<b>Depth From (TVD) (usft)</b>	<b>+N/-S (usft)</b>	<b>+E/-W (usft)</b>	<b>Direction (°)</b>	
	0.0	0.0	0.0	1.48	

<b>Plan Sections</b>										
Measured Depth (usft)	Inclination (°)	Azimuth (°)	Vertical Depth (usft)	+N/-S (usft)	+E/-W (usft)	Dogleg Rate (°/100usft)	Build Rate (°/100usft)	Turn Rate (°/100usft)	TFO (°)	Target
0.0	0.00	0.00	0.0	0.0	0.0	0.00	0.00	0.00	0.00	
7,064.5	0.00	0.00	7,064.5	0.0	0.0	0.00	0.00	0.00	0.00	
7,814.5	90.00	17.60	7,542.0	455.1	144.4	12.00	12.00	0.00	17.60	
8,401.0	90.00	0.00	7,542.0	1,032.5	233.8	3.00	0.00	-3.00	-90.00	RC 512-3019H PBHL
16,436.9	90.00	0.00	7,542.0	9,068.4	234.4	0.00	0.00	0.00	0.00	RC 512-3019H PBHL

# EOG Resources, Inc.

## Planning Report

<b>Database:</b>	EDM_DENVER	<b>Local Co-ordinate Reference:</b>	Well Randall Creek 512-3019H
<b>Company:</b>	Denver Division- Colorado	<b>TVD Reference:</b>	RKB @ 5405.0usft (KB GL+25')
<b>Project:</b>	DJ - Hereford Ranch	<b>MD Reference:</b>	RKB @ 5405.0usft (KB GL+25')
<b>Site:</b>	Randall Creek R30 SESW Pad	<b>North Reference:</b>	True
<b>Well:</b>	Randall Creek 512-3019H	<b>Survey Calculation Method:</b>	Minimum Curvature
<b>Wellbore:</b>	OH		
<b>Design:</b>	APD Plan (Plat Cert 5/29/15)		

Planned Survey									
Measured Depth (usft)	Inclination (°)	Azimuth (°)	Vertical Depth (usft)	+N/-S (usft)	+E/-W (usft)	Vertical Section (usft)	Dogleg Rate (°/100usft)	Build Rate (°/100usft)	Turn Rate (°/100usft)
0.0	0.00	0.00	0.0	0.0	0.0	0.0	0.00	0.00	0.00
100.0	0.00	0.00	100.0	0.0	0.0	0.0	0.00	0.00	0.00
200.0	0.00	0.00	200.0	0.0	0.0	0.0	0.00	0.00	0.00
300.0	0.00	0.00	300.0	0.0	0.0	0.0	0.00	0.00	0.00
400.0	0.00	0.00	400.0	0.0	0.0	0.0	0.00	0.00	0.00
500.0	0.00	0.00	500.0	0.0	0.0	0.0	0.00	0.00	0.00
600.0	0.00	0.00	600.0	0.0	0.0	0.0	0.00	0.00	0.00
700.0	0.00	0.00	700.0	0.0	0.0	0.0	0.00	0.00	0.00
800.0	0.00	0.00	800.0	0.0	0.0	0.0	0.00	0.00	0.00
900.0	0.00	0.00	900.0	0.0	0.0	0.0	0.00	0.00	0.00
1,000.0	0.00	0.00	1,000.0	0.0	0.0	0.0	0.00	0.00	0.00
1,100.0	0.00	0.00	1,100.0	0.0	0.0	0.0	0.00	0.00	0.00
1,200.0	0.00	0.00	1,200.0	0.0	0.0	0.0	0.00	0.00	0.00
1,300.0	0.00	0.00	1,300.0	0.0	0.0	0.0	0.00	0.00	0.00
1,400.0	0.00	0.00	1,400.0	0.0	0.0	0.0	0.00	0.00	0.00
1,411.0	0.00	0.00	1,411.0	0.0	0.0	0.0	0.00	0.00	0.00
9 5/8" Surface									
1,500.0	0.00	0.00	1,500.0	0.0	0.0	0.0	0.00	0.00	0.00
1,600.0	0.00	0.00	1,600.0	0.0	0.0	0.0	0.00	0.00	0.00
1,700.0	0.00	0.00	1,700.0	0.0	0.0	0.0	0.00	0.00	0.00
1,800.0	0.00	0.00	1,800.0	0.0	0.0	0.0	0.00	0.00	0.00
1,900.0	0.00	0.00	1,900.0	0.0	0.0	0.0	0.00	0.00	0.00
2,000.0	0.00	0.00	2,000.0	0.0	0.0	0.0	0.00	0.00	0.00
2,100.0	0.00	0.00	2,100.0	0.0	0.0	0.0	0.00	0.00	0.00
2,200.0	0.00	0.00	2,200.0	0.0	0.0	0.0	0.00	0.00	0.00
2,300.0	0.00	0.00	2,300.0	0.0	0.0	0.0	0.00	0.00	0.00
2,400.0	0.00	0.00	2,400.0	0.0	0.0	0.0	0.00	0.00	0.00
2,500.0	0.00	0.00	2,500.0	0.0	0.0	0.0	0.00	0.00	0.00
2,600.0	0.00	0.00	2,600.0	0.0	0.0	0.0	0.00	0.00	0.00
2,700.0	0.00	0.00	2,700.0	0.0	0.0	0.0	0.00	0.00	0.00
2,800.0	0.00	0.00	2,800.0	0.0	0.0	0.0	0.00	0.00	0.00
2,900.0	0.00	0.00	2,900.0	0.0	0.0	0.0	0.00	0.00	0.00
3,000.0	0.00	0.00	3,000.0	0.0	0.0	0.0	0.00	0.00	0.00
3,100.0	0.00	0.00	3,100.0	0.0	0.0	0.0	0.00	0.00	0.00
3,200.0	0.00	0.00	3,200.0	0.0	0.0	0.0	0.00	0.00	0.00
3,300.0	0.00	0.00	3,300.0	0.0	0.0	0.0	0.00	0.00	0.00
3,400.0	0.00	0.00	3,400.0	0.0	0.0	0.0	0.00	0.00	0.00
3,500.0	0.00	0.00	3,500.0	0.0	0.0	0.0	0.00	0.00	0.00
3,600.0	0.00	0.00	3,600.0	0.0	0.0	0.0	0.00	0.00	0.00
3,700.0	0.00	0.00	3,700.0	0.0	0.0	0.0	0.00	0.00	0.00
3,800.0	0.00	0.00	3,800.0	0.0	0.0	0.0	0.00	0.00	0.00
3,900.0	0.00	0.00	3,900.0	0.0	0.0	0.0	0.00	0.00	0.00
4,000.0	0.00	0.00	4,000.0	0.0	0.0	0.0	0.00	0.00	0.00
4,100.0	0.00	0.00	4,100.0	0.0	0.0	0.0	0.00	0.00	0.00
4,200.0	0.00	0.00	4,200.0	0.0	0.0	0.0	0.00	0.00	0.00
4,300.0	0.00	0.00	4,300.0	0.0	0.0	0.0	0.00	0.00	0.00
4,400.0	0.00	0.00	4,400.0	0.0	0.0	0.0	0.00	0.00	0.00
4,500.0	0.00	0.00	4,500.0	0.0	0.0	0.0	0.00	0.00	0.00
4,600.0	0.00	0.00	4,600.0	0.0	0.0	0.0	0.00	0.00	0.00
4,700.0	0.00	0.00	4,700.0	0.0	0.0	0.0	0.00	0.00	0.00
4,800.0	0.00	0.00	4,800.0	0.0	0.0	0.0	0.00	0.00	0.00
4,900.0	0.00	0.00	4,900.0	0.0	0.0	0.0	0.00	0.00	0.00
5,000.0	0.00	0.00	5,000.0	0.0	0.0	0.0	0.00	0.00	0.00
5,100.0	0.00	0.00	5,100.0	0.0	0.0	0.0	0.00	0.00	0.00

# EOG Resources, Inc.

## Planning Report

<b>Database:</b>	EDM_DENVER	<b>Local Co-ordinate Reference:</b>	Well Randall Creek 512-3019H
<b>Company:</b>	Denver Division- Colorado	<b>TVD Reference:</b>	RKB @ 5405.0usft (KB GL+25')
<b>Project:</b>	DJ - Hereford Ranch	<b>MD Reference:</b>	RKB @ 5405.0usft (KB GL+25')
<b>Site:</b>	Randall Creek R30 SESW Pad	<b>North Reference:</b>	True
<b>Well:</b>	Randall Creek 512-3019H	<b>Survey Calculation Method:</b>	Minimum Curvature
<b>Wellbore:</b>	OH		
<b>Design:</b>	APD Plan (Plat Cert 5/29/15)		

Planned Survey									
Measured Depth (usft)	Inclination (°)	Azimuth (°)	Vertical Depth (usft)	+N/-S (usft)	+E/-W (usft)	Vertical Section (usft)	Dogleg Rate (°/100usft)	Build Rate (°/100usft)	Turn Rate (°/100usft)
5,200.0	0.00	0.00	5,200.0	0.0	0.0	0.0	0.00	0.00	0.00
5,300.0	0.00	0.00	5,300.0	0.0	0.0	0.0	0.00	0.00	0.00
5,400.0	0.00	0.00	5,400.0	0.0	0.0	0.0	0.00	0.00	0.00
5,500.0	0.00	0.00	5,500.0	0.0	0.0	0.0	0.00	0.00	0.00
5,600.0	0.00	0.00	5,600.0	0.0	0.0	0.0	0.00	0.00	0.00
5,700.0	0.00	0.00	5,700.0	0.0	0.0	0.0	0.00	0.00	0.00
5,800.0	0.00	0.00	5,800.0	0.0	0.0	0.0	0.00	0.00	0.00
5,900.0	0.00	0.00	5,900.0	0.0	0.0	0.0	0.00	0.00	0.00
6,000.0	0.00	0.00	6,000.0	0.0	0.0	0.0	0.00	0.00	0.00
6,100.0	0.00	0.00	6,100.0	0.0	0.0	0.0	0.00	0.00	0.00
6,200.0	0.00	0.00	6,200.0	0.0	0.0	0.0	0.00	0.00	0.00
6,300.0	0.00	0.00	6,300.0	0.0	0.0	0.0	0.00	0.00	0.00
6,400.0	0.00	0.00	6,400.0	0.0	0.0	0.0	0.00	0.00	0.00
6,500.0	0.00	0.00	6,500.0	0.0	0.0	0.0	0.00	0.00	0.00
6,600.0	0.00	0.00	6,600.0	0.0	0.0	0.0	0.00	0.00	0.00
6,700.0	0.00	0.00	6,700.0	0.0	0.0	0.0	0.00	0.00	0.00
6,800.0	0.00	0.00	6,800.0	0.0	0.0	0.0	0.00	0.00	0.00
6,900.0	0.00	0.00	6,900.0	0.0	0.0	0.0	0.00	0.00	0.00
7,000.0	0.00	0.00	7,000.0	0.0	0.0	0.0	0.00	0.00	0.00
7,064.5	0.00	0.00	7,064.5	0.0	0.0	0.0	0.00	0.00	0.00
7,100.0	4.26	17.60	7,100.0	1.3	0.4	1.3	12.00	12.00	0.00
7,200.0	16.26	17.60	7,198.2	18.2	5.8	18.3	12.00	12.00	0.00
7,300.0	28.26	17.60	7,290.6	54.2	17.2	54.7	12.00	12.00	0.00
7,400.0	40.26	17.60	7,373.1	107.8	34.2	108.7	12.00	12.00	0.00
7,500.0	52.26	17.60	7,442.1	176.5	56.0	177.9	12.00	12.00	0.00
7,600.0	64.26	17.60	7,494.6	257.5	81.7	259.5	12.00	12.00	0.00
7,700.0	76.26	17.60	7,528.3	347.0	110.1	349.7	12.00	12.00	0.00
7,800.0	88.26	17.60	7,541.7	441.3	140.0	444.8	12.00	12.00	0.00
7,814.5	90.00	17.60	7,542.0	455.1	144.4	458.7	12.00	12.00	0.00
7,815.0	90.00	17.59	7,542.0	455.6	144.5	459.2	3.00	0.00	-3.00
7" Intermediate (Opt 2)									
7,900.0	90.00	15.04	7,542.0	537.2	168.4	541.3	3.00	0.00	-3.00
8,000.0	90.00	12.04	7,542.0	634.4	191.8	639.1	3.00	0.00	-3.00
8,100.0	90.00	9.04	7,542.0	732.7	210.1	737.9	3.00	0.00	-3.00
8,200.0	90.00	6.04	7,542.0	831.8	223.2	837.3	3.00	0.00	-3.00
8,300.0	90.00	3.04	7,542.0	931.5	231.1	937.1	3.00	0.00	-3.00
8,400.0	90.00	0.03	7,542.0	1,031.4	233.8	1,037.1	3.00	0.00	-3.00
8,401.0	90.00	0.00	7,542.0	1,032.5	233.8	1,038.2	3.00	0.00	-3.00
8,500.0	90.00	0.00	7,542.0	1,131.4	233.8	1,137.1	0.00	0.00	0.00
8,600.0	90.00	0.00	7,542.0	1,231.4	233.8	1,237.1	0.00	0.00	0.00
8,700.0	90.00	0.00	7,542.0	1,331.4	233.8	1,337.0	0.00	0.00	0.00
8,800.0	90.00	0.00	7,542.0	1,431.4	233.8	1,437.0	0.00	0.00	0.00
8,900.0	90.00	0.00	7,542.0	1,531.4	233.8	1,537.0	0.00	0.00	0.00
9,000.0	90.00	0.00	7,542.0	1,631.4	233.8	1,636.9	0.00	0.00	0.00
9,100.0	90.00	0.00	7,542.0	1,731.4	233.8	1,736.9	0.00	0.00	0.00
9,200.0	90.00	0.00	7,542.0	1,831.4	233.8	1,836.9	0.00	0.00	0.00
9,300.0	90.00	0.00	7,542.0	1,931.4	233.8	1,936.8	0.00	0.00	0.00
9,400.0	90.00	0.00	7,542.0	2,031.4	233.8	2,036.8	0.00	0.00	0.00
9,500.0	90.00	0.00	7,542.0	2,131.4	233.9	2,136.8	0.00	0.00	0.00
9,600.0	90.00	0.00	7,542.0	2,231.4	233.9	2,236.7	0.00	0.00	0.00
9,700.0	90.00	0.00	7,542.0	2,331.4	233.9	2,336.7	0.00	0.00	0.00
9,800.0	90.00	0.00	7,542.0	2,431.4	233.9	2,436.7	0.00	0.00	0.00
9,900.0	90.00	0.00	7,542.0	2,531.4	233.9	2,536.6	0.00	0.00	0.00

# EOG Resources, Inc.

## Planning Report

<b>Database:</b>	EDM_DENVER	<b>Local Co-ordinate Reference:</b>	Well Randall Creek 512-3019H
<b>Company:</b>	Denver Division- Colorado	<b>TVD Reference:</b>	RKB @ 5405.0usft (KB GL+25')
<b>Project:</b>	DJ - Hereford Ranch	<b>MD Reference:</b>	RKB @ 5405.0usft (KB GL+25')
<b>Site:</b>	Randall Creek R30 SESW Pad	<b>North Reference:</b>	True
<b>Well:</b>	Randall Creek 512-3019H	<b>Survey Calculation Method:</b>	Minimum Curvature
<b>Wellbore:</b>	OH		
<b>Design:</b>	APD Plan (Plat Cert 5/29/15)		

Planned Survey									
Measured Depth (usft)	Inclination (°)	Azimuth (°)	Vertical Depth (usft)	+N/-S (usft)	+E/-W (usft)	Vertical Section (usft)	Dogleg Rate (°/100usft)	Build Rate (°/100usft)	Turn Rate (°/100usft)
10,000.0	90.00	0.00	7,542.0	2,631.4	233.9	2,636.6	0.00	0.00	0.00
10,100.0	90.00	0.00	7,542.0	2,731.4	233.9	2,736.6	0.00	0.00	0.00
10,200.0	90.00	0.00	7,542.0	2,831.4	233.9	2,836.5	0.00	0.00	0.00
10,300.0	90.00	0.00	7,542.0	2,931.4	233.9	2,936.5	0.00	0.00	0.00
10,400.0	90.00	0.00	7,542.0	3,031.4	233.9	3,036.5	0.00	0.00	0.00
10,500.0	90.00	0.00	7,542.0	3,131.4	233.9	3,136.4	0.00	0.00	0.00
10,600.0	90.00	0.00	7,542.0	3,231.4	233.9	3,236.4	0.00	0.00	0.00
10,700.0	90.00	0.00	7,542.0	3,331.4	233.9	3,336.4	0.00	0.00	0.00
10,800.0	90.00	0.00	7,542.0	3,431.4	233.9	3,436.3	0.00	0.00	0.00
10,900.0	90.00	0.00	7,542.0	3,531.4	234.0	3,536.3	0.00	0.00	0.00
11,000.0	90.00	0.00	7,542.0	3,631.4	234.0	3,636.3	0.00	0.00	0.00
11,100.0	90.00	0.00	7,542.0	3,731.4	234.0	3,736.2	0.00	0.00	0.00
11,200.0	90.00	0.00	7,542.0	3,831.4	234.0	3,836.2	0.00	0.00	0.00
11,300.0	90.00	0.00	7,542.0	3,931.4	234.0	3,936.2	0.00	0.00	0.00
11,400.0	90.00	0.00	7,542.0	4,031.4	234.0	4,036.1	0.00	0.00	0.00
11,500.0	90.00	0.00	7,542.0	4,131.4	234.0	4,136.1	0.00	0.00	0.00
11,600.0	90.00	0.00	7,542.0	4,231.4	234.0	4,236.1	0.00	0.00	0.00
11,700.0	90.00	0.00	7,542.0	4,331.4	234.0	4,336.0	0.00	0.00	0.00
11,800.0	90.00	0.00	7,542.0	4,431.4	234.0	4,436.0	0.00	0.00	0.00
11,900.0	90.00	0.00	7,542.0	4,531.4	234.0	4,536.0	0.00	0.00	0.00
12,000.0	90.00	0.00	7,542.0	4,631.4	234.0	4,635.9	0.00	0.00	0.00
12,100.0	90.00	0.00	7,542.0	4,731.4	234.0	4,735.9	0.00	0.00	0.00
12,200.0	90.00	0.00	7,542.0	4,831.4	234.0	4,835.9	0.00	0.00	0.00
12,300.0	90.00	0.00	7,542.0	4,931.4	234.1	4,935.8	0.00	0.00	0.00
12,400.0	90.00	0.00	7,542.0	5,031.4	234.1	5,035.8	0.00	0.00	0.00
12,500.0	90.00	0.00	7,542.0	5,131.4	234.1	5,135.8	0.00	0.00	0.00
12,600.0	90.00	0.00	7,542.0	5,231.4	234.1	5,235.7	0.00	0.00	0.00
12,700.0	90.00	0.00	7,542.0	5,331.4	234.1	5,335.7	0.00	0.00	0.00
12,800.0	90.00	0.00	7,542.0	5,431.4	234.1	5,435.7	0.00	0.00	0.00
12,900.0	90.00	0.00	7,542.0	5,531.4	234.1	5,535.6	0.00	0.00	0.00
13,000.0	90.00	0.00	7,542.0	5,631.4	234.1	5,635.6	0.00	0.00	0.00
13,100.0	90.00	0.00	7,542.0	5,731.4	234.1	5,735.6	0.00	0.00	0.00
13,200.0	90.00	0.00	7,542.0	5,831.4	234.1	5,835.5	0.00	0.00	0.00
13,300.0	90.00	0.00	7,542.0	5,931.4	234.1	5,935.5	0.00	0.00	0.00
13,400.0	90.00	0.00	7,542.0	6,031.4	234.1	6,035.5	0.00	0.00	0.00
13,500.0	90.00	0.00	7,542.0	6,131.4	234.1	6,135.4	0.00	0.00	0.00
13,600.0	90.00	0.00	7,542.0	6,231.4	234.2	6,235.4	0.00	0.00	0.00
13,700.0	90.00	0.00	7,542.0	6,331.4	234.2	6,335.4	0.00	0.00	0.00
13,800.0	90.00	0.00	7,542.0	6,431.4	234.2	6,435.3	0.00	0.00	0.00
13,900.0	90.00	0.00	7,542.0	6,531.4	234.2	6,535.3	0.00	0.00	0.00
14,000.0	90.00	0.00	7,542.0	6,631.4	234.2	6,635.3	0.00	0.00	0.00
14,100.0	90.00	0.00	7,542.0	6,731.4	234.2	6,735.2	0.00	0.00	0.00
14,200.0	90.00	0.00	7,542.0	6,831.4	234.2	6,835.2	0.00	0.00	0.00
14,300.0	90.00	0.00	7,542.0	6,931.4	234.2	6,935.2	0.00	0.00	0.00
14,400.0	90.00	0.00	7,542.0	7,031.4	234.2	7,035.1	0.00	0.00	0.00
14,500.0	90.00	0.00	7,542.0	7,131.4	234.2	7,135.1	0.00	0.00	0.00
14,600.0	90.00	0.00	7,542.0	7,231.4	234.2	7,235.1	0.00	0.00	0.00
14,700.0	90.00	0.00	7,542.0	7,331.4	234.2	7,335.0	0.00	0.00	0.00
14,800.0	90.00	0.00	7,542.0	7,431.4	234.2	7,435.0	0.00	0.00	0.00
14,900.0	90.00	0.00	7,542.0	7,531.4	234.2	7,535.0	0.00	0.00	0.00
15,000.0	90.00	0.00	7,542.0	7,631.4	234.3	7,634.9	0.00	0.00	0.00
15,100.0	90.00	0.00	7,542.0	7,731.4	234.3	7,734.9	0.00	0.00	0.00
15,200.0	90.00	0.00	7,542.0	7,831.4	234.3	7,834.9	0.00	0.00	0.00
15,300.0	90.00	0.00	7,542.0	7,931.4	234.3	7,934.8	0.00	0.00	0.00

# EOG Resources, Inc.

## Planning Report

<b>Database:</b>	EDM_DENVER	<b>Local Co-ordinate Reference:</b>	Well Randall Creek 512-3019H
<b>Company:</b>	Denver Division- Colorado	<b>TVD Reference:</b>	RKB @ 5405.0usft (KB GL+25')
<b>Project:</b>	DJ - Hereford Ranch	<b>MD Reference:</b>	RKB @ 5405.0usft (KB GL+25')
<b>Site:</b>	Randall Creek R30 SESW Pad	<b>North Reference:</b>	True
<b>Well:</b>	Randall Creek 512-3019H	<b>Survey Calculation Method:</b>	Minimum Curvature
<b>Wellbore:</b>	OH		
<b>Design:</b>	APD Plan (Plat Cert 5/29/15)		

Planned Survey										
Measured Depth (usft)	Inclination (°)	Azimuth (°)	Vertical Depth (usft)	+N/-S (usft)	+E/-W (usft)	Vertical Section (usft)	Dogleg Rate (°/100usft)	Build Rate (°/100usft)	Turn Rate (°/100usft)	
15,400.0	90.00	0.00	7,542.0	8,031.4	234.3	8,034.8	0.00	0.00	0.00	
15,500.0	90.00	0.00	7,542.0	8,131.4	234.3	8,134.8	0.00	0.00	0.00	
15,600.0	90.00	0.00	7,542.0	8,231.4	234.3	8,234.7	0.00	0.00	0.00	
15,700.0	90.00	0.00	7,542.0	8,331.4	234.3	8,334.7	0.00	0.00	0.00	
15,800.0	90.00	0.00	7,542.0	8,431.4	234.3	8,434.7	0.00	0.00	0.00	
15,900.0	90.00	0.00	7,542.0	8,531.4	234.3	8,534.6	0.00	0.00	0.00	
16,000.0	90.00	0.00	7,542.0	8,631.4	234.3	8,634.6	0.00	0.00	0.00	
16,100.0	90.00	0.00	7,542.0	8,731.4	234.3	8,734.6	0.00	0.00	0.00	
16,200.0	90.00	0.00	7,542.0	8,831.4	234.3	8,834.5	0.00	0.00	0.00	
16,300.0	90.00	0.00	7,542.0	8,931.4	234.4	8,934.5	0.00	0.00	0.00	
16,400.0	90.00	0.00	7,542.0	9,031.4	234.4	9,034.5	0.00	0.00	0.00	
16,436.9	90.00	0.00	7,542.0	9,068.3	234.4	9,071.4	0.00	0.00	0.00	
5 1/2" Prod (Opt 1) - 4 1/2" Liner (Opt 2)										

Design Targets										
Target Name	Dip Angle (°)	Dip Dir. (°)	TVD (usft)	+N/-S (usft)	+E/-W (usft)	Northing (usft)	Easting (usft)	Latitude	Longitude	
- hit/miss target										
- Shape										
RC 512-3019H PBHL	0.00	0.00	7,542.0	9,068.4	234.4	609,172.78	2,313,985.40	41° 0' 0.125 N	104° 21' 45.205 W	
- plan hits target center										
- Point										

Casing Points						
Measured Depth (usft)	Vertical Depth (usft)	Name	Casing Diameter (")	Hole Diameter (")		
1,411.0	1,411.0	9 5/8" Surface	9-5/8	13-1/2		
7,815.0	7,542.0	7" Intermediate (Opt 2)	7	8-3/4		
16,436.9	7,542.0	5 1/2" Prod (Opt 1)	5-1/2	8-3/4		
16,436.9	7,542.0	4 1/2" Liner (Opt 2)	4-1/2	6-1/8		