

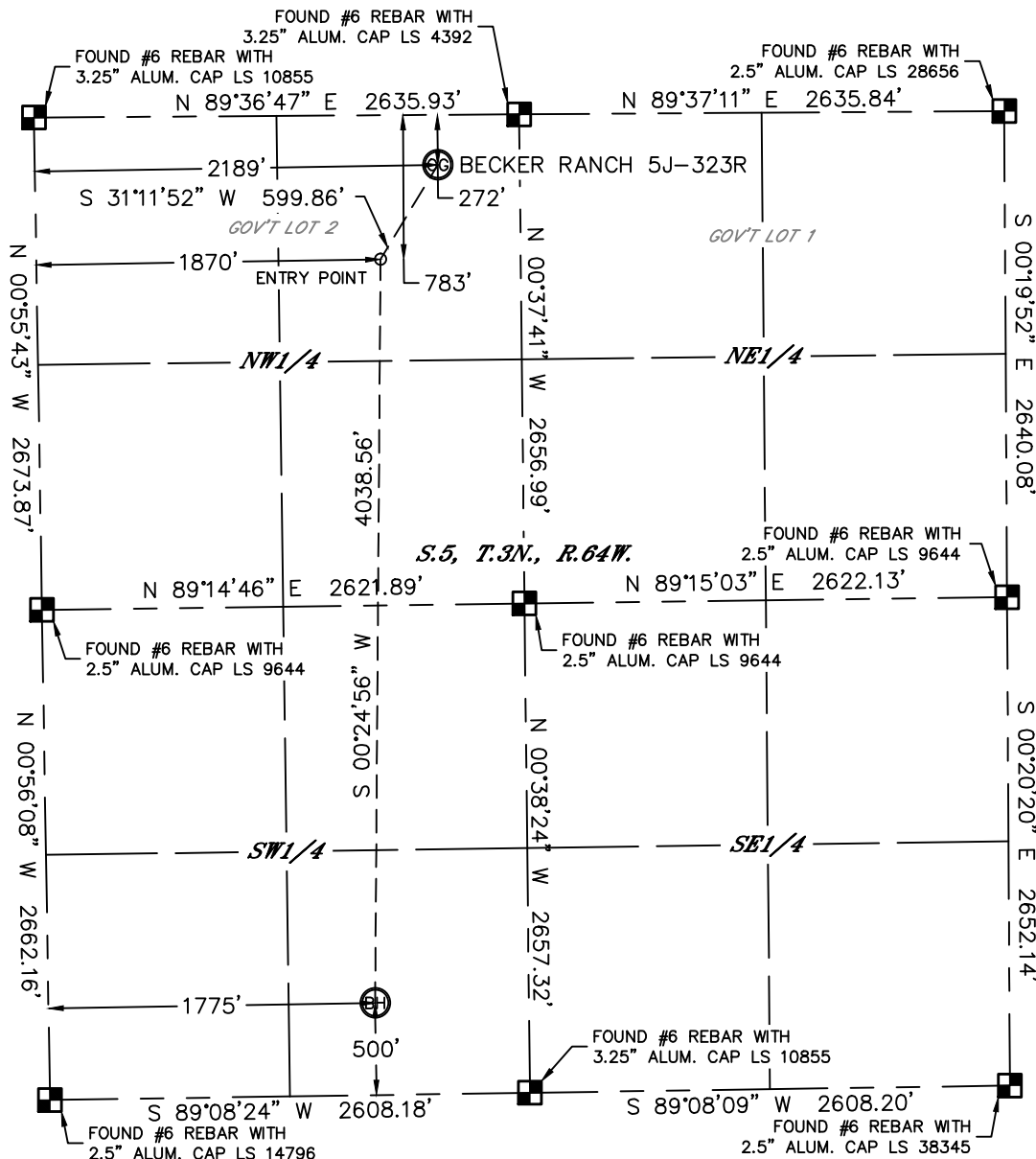


Lat40°, Inc. 1635 Foxtrail Drive, Suite 325 Loveland, CO 970-776-3321

WELL LOCATION CERTIFICATE

THIS MAP DOES NOT REPRESENT A BOUNDARY SURVEY

SECTION: 5
TOWNSHIP: 3N
RANGE: 64W



In accordance with a request from Mac Neumann with PDC ENERGY Lat40°, Inc. has determined the surface location of the BECKER RANCH 5J-323R to be 272' from the NORTH line and 1775' from the WEST line and the bottom hole to be 500' from the SOUTH line and 1775' from the WEST line as measured at right angles from the section lines of Section 5, Township 3 North, Range 64 West of the Sixth Principal Meridian, County of Weld, State of Colorado.

I hereby state that this Well Location Certificate was prepared by me, or under my direct supervision, that the fieldwork was completed on 7/17/2013, for and on behalf of PDC ENERGY. That this is not a Land Survey Plat or an Improvement Survey Plat, and that it is not to be relied upon for establishment of fence, building, or other future improvement lines.

NOTE:

- 1) Bearings shown are Grid Bearings of the Colorado State Plane Coordinate System, North Zone, North American Datum 1983/2007. The lineal dimensions as contained herein are based upon the "U.S. Survey Foot."
- 2) Ground elevations are based on an observed GPS elevation (NAVD 1988 DATUM).
- 3) IMPROVEMENTS: See LOCATION DRAWING for all visible improvements within 400' of disturbed area.
- 4) SURFACE USE: RANGELAND
- 5) INSTRUMENT OPERATOR: ADAM KELLY
- 6) NEAREST CULTURAL ITEMS:
BUILDING: ±545' NW
BUILDING UNIT: **BU1** ±545' NW
HIGH OCCUPANCY BUILDING UNIT: 5280'+
DESIGNATED OUTSIDE ACTIVITY AREA: 5280'+
PUBLIC ROAD: ±267' N
ABOVE GROUND UTILITY: ±615' NW
RAILROAD: 5280'+
PROPERTY LINE: ±272' N

SURFACE LOCATION

LAT: 40.26102N
LONG: 104.57640W
PDOP: < 6
ELEV: ±4815'
1/4,1/4: NE1/4NW1/4

ENTRY POINT

LAT: 40.25962N
LONG: 104.57753W

BOTTOM HOLE

LAT: 40.24854N
LONG: 104.57779W

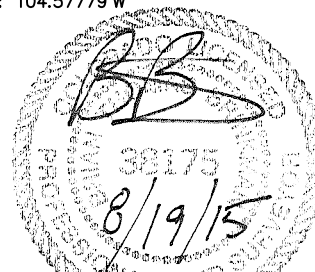
LEGEND

- = ALIQUOT MONUMENT AS DESCRIBED
○ = CALCULATED POSITION

Brian T. Brinkman—On Behalf of Lat40°, Inc.

Colorado Licensed Professional
Land Surveyor No. 38175

DATE: 8/19/2015
PROJECT#: 2013107



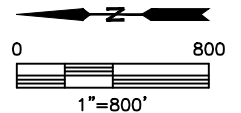
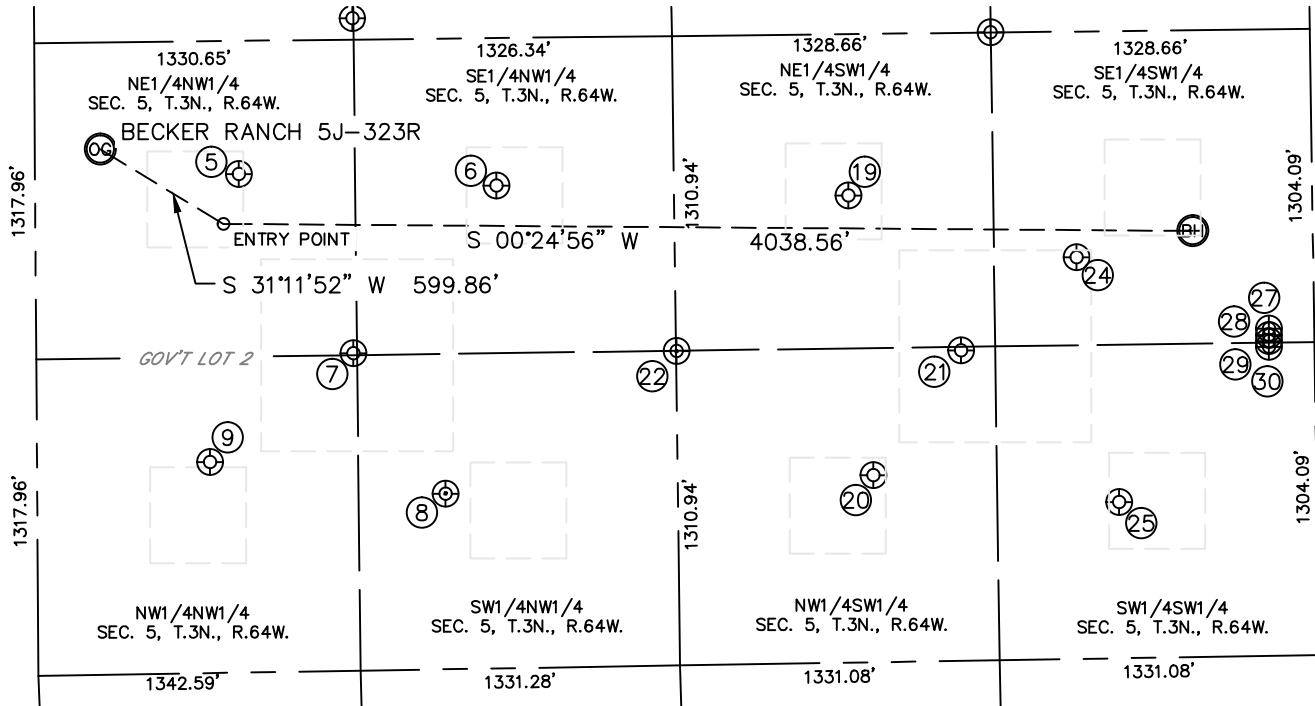


Lat40°, Inc. 1635 Foxtrail Drive, Suite 325 Loveland, CO 970-776-3321

SITE SKETCH

BECKER RANCH 5J-323R

SECTION: 5
TOWNSHIP: 3N
RANGE: 64W



WELL NO.	WELL NAME	SHL FOOTAGE				SHL LAT°	SHL LONG°	PDOP	ELEV (FT.)	1/4/1/4
5	BECKER 5-11	848	FNL	2076	FWL	40.25944	-104.57679	1.4	4812	NENW
6	BECKER 5-3	1922	FNL	2011	FWL	40.25650	-104.57700	1.4	4801	SENW
7	BECKER 5	1321	FNL	1323	FWL	40.25815	-104.57948	1.4	4826	NENW
8	BECKER 5-9	1701	FNL	731	FWL	40.25712	-104.58159	1.5	4803	SWNW
9	BECKER 5-7	721	FNL	878	FWL	40.25980	-104.58108	1.8	4824	NWNW
19	BECKER 5-13	1932	FSL	1946	FWL	40.25247	-104.57721	1.8	4765	NESW
20	BECKER 5-8	1845	FSL	779	FWL	40.25222	-104.58138	1.7	4767	NWSW
21	BECKER 7	1472	FSL	1293	FWL	40.25121	-104.57953	1.7	4758	NWSW
22	BECKER 8-12 I	2658	FSL	1310	FWL	40.25446	-104.57950	2.4	4777	NWSW
24	BECKER 5-2	986	FSL	1673	FWL	40.24987	-104.57816	1.9	4752	SESW
25	BECKER 5-14	823	FSL	651	FWL	40.24942	-104.58182	1.5	4759	SWSW
27	LDS D08-28D	190	FSL	1362	FWL	40.24769	-104.57926	2.5	4751	SESW
28	LDS D08-18D	190	FSL	1336	FWL	40.24769	-104.57935	2.4	4751	SESW
29	LDS D08-29D	190	FSL	1311	FWL	40.24769	-104.57944	5.3	4751	SESW
30	LDS D08-30D	191	FSL	1287	FWL	40.24769	-104.57953	2.4	4751	SWSW

DATE: 8/19/2015
PROJECT#: 2013107