

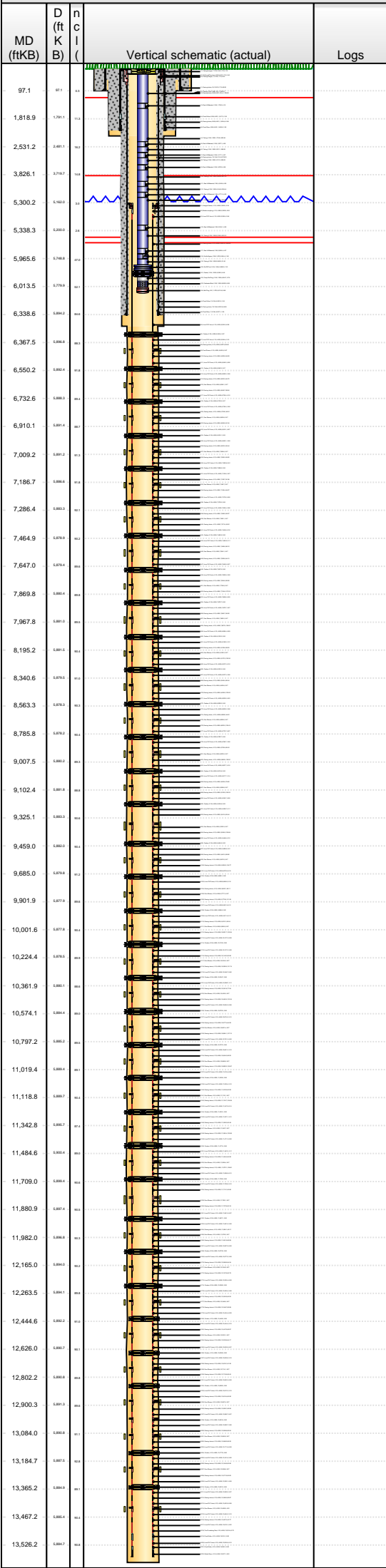


Lease Review All - Frac Summary

Well Name: RAZOR 11G-0209A

API Number 051233873100			WPC ID 1CO0761182			Well Permit Number			Field Name DJ Horizontal Niobrara			County Weld			State CO
Well Configuration Type Lateral/Horizontal					Orig KB Elv (ft) 4,989.70		Ground Elevation (ft) 4,972.90		Casing Flange Elevation (ft)		Tubing Head Elevation (ft)		Total Depth (ftKB) 13,538.0		
Original Spud Date 1/30/2015		Completion Date 5/13/2015		Asset Group Redtail			Responsible Engineer Charles Ohlson			N/S Dist (ft) 2,321.0		N/S Ref FNL	E/W Dist (ft) 1,782.0		E/W Ref FEL
Lot	Quarter 1 SW	Quarter 2 NE	Quarter 3	Quarter 4	Section 11	Section Suffix	Section Type	Township 10	Township N/S Dir N	Range 58	Range E/W Dir W	Meridian			

Lateral/Horizontal - Original Hole, 8/19/2015 2:39:57 PM



Wellbore Sections						
Wellbore Name			Start Date	Size (in)	Act Top (ftKB)	Act Btm (ftKB)
Original Hole			12/18/2014	20	17.0	97.0
Original Hole			1/30/2015	13 1/2	97.0	1,875.0
Original Hole			2/1/2015	8 3/4	1,875.0	6,358.0
Original Hole			2/3/2015	6 1/8	6,358.0	13,538.0
Conductor Pipe, 97.0ftKB						
OD (in)	Wt (lb/ft)	Grade	Top (ftKB)	Btm (ftKB)	Len (ft)	Item Des
16	84.00	J-55	17.0	97.0	80.00	Casing Joints
Surface Csg, 1,861.4ftKB						
OD (in)	Wt (lb/ft)	Grade	Top (ftKB)	Btm (ftKB)	Len (ft)	Item Des
9 5/8	36.00	J-55	17.0	17.0	0.00	Landing Joint
9 5/8	36.00	J-55	17.0	20.4	3.40	Wellhead/Pup Joint
9 5/8	36.00	J-55	20.4	1,817.3	1,796.95	Casing Joints
9 5/8	36.00	J-55	1,817.3	1,818.8	1.50	Float Collar
9 5/8	36.00	J-55	1,818.8	1,859.9	41.08	Casing Joints
9 5/8	36.00	J-55	1,859.9	1,861.4	1.50	Float Shoe
Frac String, 5,307.1ftKB						
OD (in)	Wt (lb/ft)	Grade	Top (ftKB)	Btm (ftKB)	Len (ft)	Item Des
7			17.1	18.7	1.60	Casing Hanger
4 1/2	11.60	P-110	18.7	59.9	41.24	Casing Joints
4 1/2			59.9	83.0	23.10	Casing PUP Joint
4 1/2	11.60	P-110	83.0	5,305.5	5,222.44	Casing Joints
5			5,305.5	5,307.1	1.58	Seal Assembly
Intermediate Csg, 6,338.6ftKB						
OD (in)	Wt (lb/ft)	Grade	Top (ftKB)	Btm (ftKB)	Len (ft)	Item Des
7	29.00	P-110	17.0	17.0	0.00	Landing Joint
7	29.00	P-110	17.0	21.0	4.00	Casing Hanger
7	29.00	P-110	21.0	6,291.5	6,270.53	Casing Joints
7	29.00	P-110	6,291.5	6,293.0	1.50	Float Collar
7	29.00	P-110	6,293.0	6,337.1	44.08	Casing Joints
7	29.00	P-110	6,337.1	6,338.6	1.50	Float Shoe
Liner, 13,528.0ftKB						
OD (in)	Wt (lb/ft)	Grade	Top (ftKB)	Btm (ftKB)	Len (ft)	Item Des
4 1/2	11.60	P-110	5,300.2	5,305.5	5.34	Hanger Packer
4 1/2	11.60	P-110	5,305.5	5,306.5	0.92	Bottom coupling
4 1/2	11.60	P-110	5,306.5	5,309.3	2.84	Liner PUP Joint
4 1/2	11.60	P-110	5,309.3	6,354.3	1,045.03	Casing Joints
4 1/2	11.60	P-110	6,354.3	6,360.4	6.08	Liner PUP Joint
6 1/8	11.60	P-110	6,360.4	6,364.4	3.97	Packer
4 1/2	11.60	P-110	6,364.4	6,367.5	3.10	Liner PUP Joint
4 1/2	11.60	P-110	6,367.5	6,453.0	85.48	Casing Joints
4 1/2	11.60	P-110	6,453.0	6,455.6	2.67	Frac Sleeve
4 1/2	11.60	P-110	6,455.6	6,540.2	84.59	Casing Joints
4 1/2	11.60	P-110	6,540.2	6,546.3	6.06	Liner PUP Joint
6 1/8	11.60	P-110	6,546.3	6,550.2	3.97	Packer
4 1/2	11.60	P-110	6,550.2	6,553.3	3.08	Liner PUP Joint
4 1/2	11.60	P-110	6,553.3	6,638.1	84.75	Casing Joints
4 1/2	11.60	P-110	6,638.1	6,640.7	2.67	Frac Sleeve
4 1/2	11.60	P-110	6,640.7	6,726.4	85.64	Casing Joints
4 1/2	11.60	P-110	6,726.4	6,732.5	6.10	Liner PUP Joint
6 1/8	11.60	P-110	6,732.5	6,736.5	3.97	Packer
4 1/2	11.60	P-110	6,736.5	6,739.5	3.09	Liner PUP Joint
4 1/2	11.60	P-110	6,739.5	6,825.9	86.31	Casing Joints
4 1/2	11.60	P-110	6,825.9	6,828.5	2.67	Frac Sleeve
4 1/2	11.60	P-110	6,828.5	6,910.1	81.54	Casing Joints
4 1/2	11.60	P-110	6,910.1	6,916.1	6.07	Liner PUP Joint
6 1/8	11.60	P-110	6,916.1	6,920.1	3.95	Packer
4 1/2	11.60	P-110	6,920.1	6,923.2	3.09	Liner PUP Joint
4 1/2	11.60	P-110	6,923.2	7,006.6	83.44	Casing Joints
4 1/2	11.60	P-110	7,006.6	7,009.3	2.67	Frac Sleeve
4 1/2	11.60	P-110	7,009.3	7,092.8	83.55	Casing Joints
4 1/2	11.60	P-110	7,092.8	7,098.6	5.81	Liner PUP Joint
6 1/8	11.60	P-110	7,098.6	7,102.6	3.96	Packer
4 1/2	11.60	P-110	7,102.6	7,105.7	3.07	Liner PUP Joint
4 1/2	11.60	P-110	7,105.7	7,186.8	81.08	Casing Joints
4 1/2	11.60	P-110	7,186.8	7,189.4	2.67	Frac Sleeve
4 1/2	11.60	P-110	7,189.4	7,273.5	84.07	Casing Joints
4 1/2	11.60	P-110	7,273.5	7,279.5	6.00	Liner PUP Joint
6 1/8	11.60	P-110	7,279.5	7,283.5	3.96	Packer
4 1/2	11.60	P-110	7,283.5	7,286.5	3.08	Liner PUP Joint
4 1/2	11.60	P-110	7,286.5	7,369.1	82.57	Casing Joints
4 1/2	11.60	P-110	7,369.1	7,371.8	2.67	Frac Sleeve
4 1/2	11.60	P-110	7,371.8	7,454.8	83.01	Casing Joints



Lease Review All - Frac Summary
Well Name: RAZOR 11G-0209A

API Number 051233873100			WPC ID 1CO0761182			Well Permit Number			Field Name DJ Horizontal Niobrara			County Weld			State CO
Well Configuration Type Lateral/Horizontal					Orig KB Elv (ft) 4,989.70		Ground Elevation (ft) 4,972.90		Casing Flange Elevation (ft)		Tubing Head Elevation (ft)		Total Depth (ftKB) 13,538.0		
Original Spud Date 1/30/2015		Completion Date 5/13/2015		Asset Group Redtail			Responsible Engineer Charles Ohlson			N/S Dist (ft) 2,321.0		N/S Ref FNL	E/W Dist (ft) 1,782.0		E/W Ref FEL
Lot	Quarter 1 SW	Quarter 2 NE	Quarter 3	Quarter 4	Section 11	Section Suffix	Section Type	Township 10	Township N/S Dir N	Range 58	Range E/W Dir W	Meridian			

Lateral/Horizontal - Original Hole, 8/19/2015 2:40:03 PM						OD (in)	Wt (lb/ft)	Grade	Top (ftKB)	Btm (ftKB)	Len (ft)	Item Des
MD (ftKB)	D (ft K B)	n (in)	c (in)	l (in)	Logs	4 1/2	11.60	P-110	7,454.8	7,460.9	6.16	Liner PUP Joint
						6 1/8	11.60	P-110	7,460.9	7,464.9	3.96	Packer
97.1	001.1	001	001	001		4 1/2	11.60	P-110	7,464.9	7,468.0	3.11	Liner PUP Joint
						4 1/2	11.60	P-110	7,468.0	7,554.1	86.10	Casing Joints
1,818.9	1,761.1	002	002	002		4 1/2	11.60	P-110	7,554.1	7,556.8	2.67	Frac Sleeve
						4 1/2	11.60	P-110	7,556.8	7,640.9	84.12	Casing Joints
2,531.2	1,801.1	003	003	003		4 1/2	11.60	P-110	7,640.9	7,647.0	6.07	Liner PUP Joint
						6 1/8	11.60	P-110	7,647.0	7,650.9	3.96	Packer
3,826.1	1,276.1	004	004	004		4 1/2	11.60	P-110	7,650.9	7,654.0	3.09	Liner PUP Joint
						4 1/2	11.60	P-110	7,654.0	7,739.9	85.90	Casing Joints
5,300.2	5,160.2	005	005	005		4 1/2	11.60	P-110	7,739.9	7,742.6	2.67	Frac Sleeve
						4 1/2	11.60	P-110	7,742.6	7,869.6	127.03	Casing Joints
5,965.6	1,748.6	006	006	006		4 1/2	11.60	P-110	7,869.6	7,875.7	6.09	Liner PUP Joint
						6 1/8	11.60	P-110	7,875.7	7,879.7	3.96	Packer
6,013.5	1,279.6	007	007	007		4 1/2	11.60	P-110	7,879.7	7,882.7	3.07	Liner PUP Joint
						4 1/2	11.60	P-110	7,882.7	7,965.2	82.50	Casing Joints
6,338.6	1,089.6	008	008	008		4 1/2	11.60	P-110	7,965.2	7,967.9	2.67	Frac Sleeve
						4 1/2	11.60	P-110	7,967.9	8,096.4	128.51	Casing Joints
6,367.5	1,089.6	009	009	009		4 1/2	11.60	P-110	8,096.4	8,102.5	6.09	Liner PUP Joint
						6 1/8	11.60	P-110	8,102.5	8,106.5	3.96	Packer
6,550.2	1,081.6	010	010	010		4 1/2	11.60	P-110	8,106.5	8,109.6	3.12	Liner PUP Joint
						4 1/2	11.60	P-110	8,109.6	8,195.2	85.63	Casing Joints
6,732.6	1,081.6	011	011	011		4 1/2	11.60	P-110	8,195.2	8,197.9	2.67	Frac Sleeve
						4 1/2	11.60	P-110	8,197.9	8,327.3	129.36	Casing Joints
6,910.1	1,079.6	012	012	012		4 1/2	11.60	P-110	8,327.3	8,333.4	6.10	Liner PUP Joint
						6 1/8	11.60	P-110	8,333.4	8,337.3	3.96	Packer
7,009.2	1,079.6	013	013	013		4 1/2	11.60	P-110	8,337.3	8,340.4	3.08	Liner PUP Joint
						4 1/2	11.60	P-110	8,340.4	8,425.8	85.44	Casing Joints
7,186.7	1,081.6	014	014	014		4 1/2	11.60	P-110	8,425.8	8,428.5	2.67	Frac Sleeve
						4 1/2	11.60	P-110	8,428.5	8,553.5	125.00	Casing Joints
7,286.4	1,081.6	015	015	015		4 1/2	11.60	P-110	8,553.5	8,559.5	6.02	Liner PUP Joint
						6 1/8	11.60	P-110	8,559.5	8,563.5	3.96	Packer
7,464.9	1,079.6	016	016	016		4 1/2	11.60	P-110	8,563.5	8,566.6	3.08	Liner PUP Joint
						4 1/2	11.60	P-110	8,566.6	8,650.6	84.01	Casing Joints
7,647.0	1,079.6	017	017	017		4 1/2	11.60	P-110	8,650.6	8,653.2	2.67	Frac Sleeve
						4 1/2	11.60	P-110	8,653.2	8,779.7	126.43	Casing Joints
7,869.8	1,081.6	018	018	018		4 1/2	11.60	P-110	8,779.7	8,785.7	6.07	Liner PUP Joint
						6 1/8	11.60	P-110	8,785.7	8,789.7	3.96	Packer
7,967.8	1,081.6	019	019	019		4 1/2	11.60	P-110	8,789.7	8,792.8	3.08	Liner PUP Joint
						4 1/2	11.60	P-110	8,792.8	8,878.2	85.43	Casing Joints
8,195.2	1,081.6	020	020	020		4 1/2	11.60	P-110	8,878.2	8,880.9	2.67	Frac Sleeve
						4 1/2	11.60	P-110	8,880.9	9,007.7	126.81	Casing Joints
8,340.6	1,079.6	021	021	021		4 1/2	11.60	P-110	9,007.7	9,013.8	6.10	Liner PUP Joint
						6 1/8	11.60	P-110	9,013.8	9,017.7	3.95	Packer
8,563.3	1,079.6	022	022	022		4 1/2	11.60	P-110	9,017.7	9,020.9	3.14	Liner PUP Joint
						4 1/2	11.60	P-110	9,020.9	9,099.8	78.95	Casing Joints
8,785.8	1,079.6	023	023	023		4 1/2	11.60	P-110	9,099.8	9,102.5	2.67	Frac Sleeve
						4 1/2	11.60	P-110	9,102.5	9,228.7	126.20	Casing Joints
9,007.5	1,081.6	024	024	024		4 1/2	11.60	P-110	9,228.7	9,234.8	6.09	Liner PUP Joint
						6 1/8	11.60	P-110	9,234.8	9,238.7	3.95	Packer
9,102.4	1,081.6	025	025	025		4 1/2	11.60	P-110	9,238.7	9,241.9	3.11	Liner PUP Joint
						4 1/2	11.60	P-110	9,241.9	9,325.3	83.44	Casing Joints
9,325.1	1,081.6	026	026	026		4 1/2	11.60	P-110	9,325.3	9,328.0	2.67	Frac Sleeve
						4 1/2	11.60	P-110	9,328.0	9,448.8	120.88	Casing Joints
9,459.0	1,081.6	027	027	027		4 1/2	11.60	P-110	9,448.8	9,454.9	6.10	Liner PUP Joint
						6 1/8	11.60	P-110	9,454.9	9,458.9	3.95	Packer
9,685.0	1,079.6	028	028	028		4 1/2	11.60	P-110	9,458.9	9,461.9	3.01	Liner PUP Joint
						4 1/2	11.60	P-110	9,461.9	9,547.6	85.66	Casing Joints
9,901.9	1,079.6	029	029	029		4 1/2	11.60	P-110	9,547.6	9,550.2	2.67	Frac Sleeve
						4 1/2	11.60	P-110	9,550.2	9,679.0	128.77	Casing Joints
10,001.6	1,079.6	030	030	030		4 1/2	11.60	P-110	9,679.0	9,685.1	6.10	Liner PUP Joint
						6 1/8	11.60	P-110	9,685.1	9,689.1	3.95	Packer
10,224.4	1,081.6	031	031	031		4 1/2	11.60	P-110	9,689.1	9,692.2	3.10	Liner PUP Joint
						4 1/2	11.60	P-110	9,692.2	9,777.3	85.11	Casing Joints
10,361.9	1,081.6	032	032	032		4 1/2	11.60	P-110	9,777.3	9,779.9	2.67	Frac Sleeve
						4 1/2	11.60	P-110	9,779.9	9,901.9	121.95	Casing Joints
10,574.1	1,081.6	033	033	033		4 1/2	11.60	P-110	9,901.9	9,908.0	6.12	Liner PUP Joint
						6 1/8	11.60	P-110	9,908.0	9,912.0	3.95	Packer
10,797.2	1,081.6	034	034	034		4 1/2	11.60	P-110	9,912.0	9,915.1	3.11	Liner PUP Joint
						4 1/2	11.60	P-110	9,915.1	9,999.0	83.94	Casing Joints
11,019.4	1,081.6	035	035	035		4 1/2	11.60	P-110	9,999.0	10,001.7	2.67	Frac Sleeve
						4 1/2	11.60	P-110				



Lease Review All - Frac Summary

Well Name: RAZOR 11G-0209A

API Number 051233873100			WPC ID 1CO0761182			Well Permit Number			Field Name DJ Horizontal Niobrara			County Weld		State CO	
Well Configuration Type Lateral/Horizontal					Orig KB Elv (ft) 4,989.70		Ground Elevation (ft) 4,972.90		Casing Flange Elevation (ft)		Tubing Head Elevation (ft)		Total Depth (ftKB) 13,538.0		
Original Spud Date 1/30/2015		Completion Date 5/13/2015		Asset Group Redtail			Responsible Engineer Charles Ohlson			N/S Dist (ft) 2,321.0		N/S Ref FNL	E/W Dist (ft) 1,782.0	E/W Ref FEL	
Lot		Quarter 1 SW	Quarter 2 NE	Quarter 3	Quarter 4	Section 11	Section Suffix	Section Type	Township 10 N		Township N/S Dir		Range 58 W	Meridian	
Lateral/Horizontal - Original Hole, 8/19/2015 2:40:08 PM						OD (in)	Wt (lb/ft)	Grade	Top (ftKB)	Btm (ftKB)	Len (ft)	Item Des			
MD (ftKB)	D (ft K B)	n (C L)	<div>Vertical schematic (actual)</div>			Logs	4 1/2	11.60	P-110	10,001.7	10,127.2	125.54	Casing Joints		
							4 1/2	11.60	P-110	10,127.2	10,133.3	6.09	Liner PUP Joint		
							6 1/8	11.60	P-110	10,133.3	10,137.3	3.96	Packer		
							4 1/2	11.60	P-110	10,137.3	10,140.4	3.09	Liner PUP Joint		
							4 1/2	11.60	P-110	10,140.4	10,224.3	83.90	Casing Joints		
							4 1/2	11.60	P-110	10,224.3	10,226.9	2.67	Frac Sleeve		
							4 1/2	11.60	P-110	10,226.9	10,348.7	121.74	Casing Joints		
							4 1/2	11.60	P-110	10,348.7	10,354.7	6.06	Liner PUP Joint		
							6 1/8	11.60	P-110	10,354.7	10,358.7	3.96	Packer		
							4 1/2	11.60	P-110	10,358.7	10,361.8	3.11	Liner PUP Joint		
							4 1/2	11.60	P-110	10,361.8	10,439.3	77.54	Casing Joints		
							4 1/2	11.60	P-110	10,439.3	10,442.0	2.67	Frac Sleeve		
							4 1/2	11.60	P-110	10,442.0	10,564.2	122.24	Casing Joints		
							4 1/2	11.60	P-110	10,564.2	10,570.3	6.08	Liner PUP Joint		
							6 1/8	11.60	P-110	10,570.3	10,574.3	3.96	Packer		
							4 1/2	11.60	P-110	10,574.3	10,577.4	3.12	Liner PUP Joint		
							4 1/2	11.60	P-110	10,577.4	10,661.4	84.00	Casing Joints		
							4 1/2	11.60	P-110	10,661.4	10,664.1	2.67	Frac Sleeve		
							4 1/2	11.60	P-110	10,664.1	10,791.2	127.12	Casing Joints		
							4 1/2	11.60	P-110	10,791.2	10,797.3	6.09	Liner PUP Joint		
							6 1/8	11.60	P-110	10,797.3	10,801.2	3.96	Packer		
							4 1/2	11.60	P-110	10,801.2	10,804.3	3.10	Liner PUP Joint		
							4 1/2	11.60	P-110	10,804.3	10,889.9	85.53	Casing Joints		
							4 1/2	11.60	P-110	10,889.9	10,892.5	2.67	Frac Sleeve		
							4 1/2	11.60	P-110	10,892.5	11,019.4	126.87	Casing Joints		
							4 1/2	11.60	P-110	11,019.4	11,025.5	6.08	Liner PUP Joint		
							6 1/8	11.60	P-110	11,025.5	11,029.5	3.96	Packer		
							4 1/2	11.60	P-110	11,029.5	11,032.6	3.10	Liner PUP Joint		
							4 1/2	11.60	P-110	11,032.6	11,116.1	83.50	Casing Joints		
							4 1/2	11.60	P-110	11,116.1	11,118.7	2.67	Frac Sleeve		
							4 1/2	11.60	P-110	11,118.7	11,247.0	128.28	Casing Joints		
							4 1/2	11.60	P-110	11,247.0	11,253.1	6.14	Liner PUP Joint		
							6 1/8	11.60	P-110	11,253.1	11,257.1	3.95	Packer		
							4 1/2	11.60	P-110	11,257.1	11,260.2	3.12	Liner PUP Joint		
							4 1/2	11.60	P-110	11,260.2	11,342.7	82.49	Casing Joints		
							4 1/2	11.60	P-110	11,342.7	11,345.4	2.67	Frac Sleeve		
							4 1/2	11.60	P-110	11,345.4	11,471.3	125.89	Casing Joints		
							4 1/2	11.60	P-110	11,471.3	11,477.4	6.09	Liner PUP Joint		
							6 1/8	11.60	P-110	11,477.4	11,481.3	3.96	Packer		
							4 1/2	11.60	P-110	11,481.3	11,484.4	3.11	Liner PUP Joint		
							4 1/2	11.60	P-110	11,484.4	11,569.4	84.99	Casing Joints		
							4 1/2	11.60	P-110	11,569.4	11,572.1	2.67	Frac Sleeve		
							4 1/2	11.60	P-110	11,572.1	11,698.9	126.81	Casing Joints		
							4 1/2	11.60	P-110	11,698.9	11,705.0	6.12	Liner PUP Joint		
							6 1/8	11.60	P-110	11,705.0	11,709.0	3.96	Packer		
							4 1/2	11.60	P-110	11,709.0	11,712.1	3.10	Liner PUP Joint		
							4 1/2	11.60	P-110	11,712.1	11,795.1	83.06	Casing Joints		
							4 1/2	11.60	P-110	11,795.1	11,797.8	2.67	Frac Sleeve		
4 1/2	11.60	P-110	11,797.8	11,881.0	83.18	Casing Joints									
4 1/2	11.60	P-110	11,881.0	11,887.1	6.07	Liner PUP Joint									
6 1/8	11.60	P-110	11,887.1	11,891.0	3.95	Packer									
4 1/2	11.60	P-110	11,891.0	11,894.1	3.09	Liner PUP Joint									
4 1/2	11.60	P-110	11,894.1	11,979.2	85.11	Casing Joints									
4 1/2	11.60	P-110	11,979.2	11,981.9	2.67	Frac Sleeve									
4 1/2	11.60	P-110	11,981.9	12,067.5	85.58	Casing Joints									
4 1/2	11.60	P-110	12,067.5	12,073.5	6.09	Liner PUP Joint									
6 1/8	11.60	P-110	12,073.5	12,077.5	3.96	Packer									
4 1/2	11.60	P-110	12,077.5	12,080.6	3.09	Liner PUP Joint									
4 1/2	11.60	P-110	12,080.6	12,164.9	84.34	Casing Joints									
4 1/2	11.60	P-110	12,164.9	12,167.6	2.67	Frac Sleeve									
4 1/2	11.60	P-110	12,167.6	12,250.4	82.79	Casing Joints									
4 1/2	11.60	P-110	12,250.4	12,256.5	6.09	Liner PUP Joint									
6 1/8	11.60	P-110	12,256.5	12,260.4	3.95	Packer									
4 1/2	11.60	P-110	12,260.4	12,263.5	3.08	Liner PUP Joint									
4 1/2	11.60	P-110	12,263.5	12,346.0	82.53	Casing Joints									
4 1/2	11.60	P-110	12,346.0	12,348.7	2.67	Frac Sleeve									
4 1/2	11.60	P-110	12,348.7	12,434.4	85.68	Casing Joints									
4 1/2	11.60	P-110	12,434.4	12,440.5	6.09	Liner PUP Joint									
4 1/2	11.60	P-110	12,440.5	12,444.4	3.96	Packer									
4 1/2	11.60	P-110	12,444.4	12,447.5	3.10	Liner PUP Joint									
4 1/2	11.60	P-110	12,447.5	12,533.1	85.57	Casing Joints									

Page 4/8



Lease Review All - Frac Summary

Well Name: RAZOR 11G-0209A

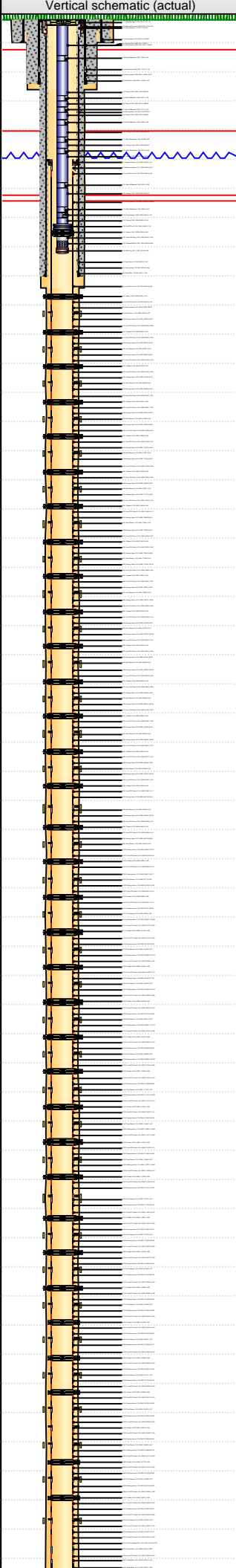
API Number 051233873100		WPC ID 1CO0761182		Well Permit Number		Field Name DJ Horizontal Niobrara		County Weld		State CO						
Well Configuration Type Lateral/Horizontal			Orig KB Elv (ft) 4,989.70		Ground Elevation (ft) 4,972.90		Casing Flange Elevation (ft)		Tubing Head Elevation (ft)		Total Depth (ftKB) 13,538.0					
Original Spud Date 1/30/2015		Completion Date 5/13/2015		Asset Group Redtail		Responsible Engineer Charles Ohlson			N/S Dist (ft) 2,321.0		N/S Ref FNL	E/W Dist (ft) 1,782.0		E/W Ref FEL		
Lot		Quarter 1 SW	Quarter 2 NE	Quarter 3	Quarter 4	Section 11	Section Suffix	Section Type	Township 10	Township N/S Dir N	Range 58		Range E/W Dir W	Meridian		
Lateral/Horizontal - Original Hole, 8/19/2015 2:40:20 PM						Stim/Treat Additives										
MD (ftKB)	D (ft K B)	n (K B)	c (K B)	l (K B)	Vertical schematic (actual)	Logs										
97.1	001.0	001	001	001			Stg #		Add		Type		Amount		Units	Sand Size
							2		Proppant		Ottawa 30/50		120,759.0		lb	30/50
1,818.9	1,761.1	112	112	112			2		Proppant		Ottawa 40/70		2,216.0		lb	40/70
Interval 3																
Stg #		Start Date		Top (ftKB)		Btm (ftKB)		Vol Clean...		Vol Slurry...		Comment				
3		5/9/2015		13,083.9		13,086.5		6193.00		6335.00		Slickwater:6193 bbl				
Stim/Treat Additives																
Stg #		Add		Type		Amount		Units		Sand Size						
3		Proppant		Ottawa 30/50		119,931.0		lb		30/50						
3		Proppant		Ottawa 40/70		2,679.0		lb		40/70						
Interval 4																
Stg #		Start Date		Top (ftKB)		Btm (ftKB)		Vol Clean...		Vol Slurry...		Comment				
4		5/10/2015		12,897.4		12,900.1		4989.00		5107.00		Slickwater:4989 bbl				
Stim/Treat Additives																
Stg #		Add		Type		Amount		Units		Sand Size						
4		Proppant		Ottawa 30/50		92,429.15		lb		30/50						
4		Proppant		Ottawa 40/70		3,500.0		lb		40/70						
Interval 5																
Stg #		Start Date		Top (ftKB)		Btm (ftKB)		Vol Clean...		Vol Slurry...		Comment				
5		5/11/2015		12,714.1		12,716.8		5553.00		5658.00		Slickwater:5553 bbl				
Stim/Treat Additives																
Stg #		Add		Type		Amount		Units		Sand Size						
5		Proppant		Ottawa 30/50		88,607.0		lb		30/50						
5		Proppant		Ottawa 40/70		2,174.0		lb		40/70						
Interval 6																
Stg #		Start Date		Top (ftKB)		Btm (ftKB)		Vol Clean...		Vol Slurry...		Comment				
6		5/11/2015		12,533.1		12,535.8		5484.00		5627.00		Slickwater:5484 bbl				
Stim/Treat Additives																
Stg #		Add		Type		Amount		Units		Sand Size						
6		Proppant		Ottawa 30/50		123,042.0		lb		30/50						
6		Proppant		Ottawa 40/70		2,407.0		lb		40/70						
Interval 7																
Stg #		Start Date		Top (ftKB)		Btm (ftKB)		Vol Clean...		Vol Slurry...		Comment				
7		5/11/2015		12,346.0		12,348.7		5386.00		5526.00		Slickwater:5386 bbl				
Stim/Treat Additives																
Stg #		Add		Type		Amount		Units		Sand Size						
7		Proppant		Ottawa 30/50		117,720.6		lb		30/50						
7		Proppant		Ottawa 40/70		1,688.0		lb		40/70						
Interval 8																
Stg #		Start Date		Top (ftKB)		Btm (ftKB)		Vol Clean...		Vol Slurry...		Comment				
8		5/11/2015		12,164.9		12,167.6		5330.00		5470.00		Slickwater:5330 bbl				
Stim/Treat Additives																
Stg #		Add		Type		Amount		Units		Sand Size						
8		Proppant		Ottawa 30/50		105,016.0		lb		30/50						
8		Proppant		Ottawa 40/70		2,426.0		lb		40/70						
Interval 9																
Stg #		Start Date		Top (ftKB)		Btm (ftKB)		Vol Clean...		Vol Slurry...		Comment				
9		5/11/2015		11,979.2		11,981.9		5367.00		5510.00		Slickwater:5367 bbl				
Stim/Treat Additives																
Stg #		Add		Type		Amount		Units		Sand Size						
9		Proppant		Ottawa 30/50		110,186.2		lb		30/50						
9		Proppant		Ottawa 40/70		1,468.0		lb		40/70						
Interval 10																
Stg #		Start Date		Top (ftKB)		Btm (ftKB)		Vol Clean...		Vol Slurry...		Comment				
10		5/11/2015		11,795.1		11,797.8		5301.00		5422.00		Slickwater:5301 bbl				
Stim/Treat Additives																
Stg #		Add		Type		Amount		Units		Sand Size						
10		Proppant		Ottawa 30/50		92,848.0		lb		30/50						
10		Proppant		Ottawa 40/70		2,583.0		lb		40/70						
Interval 11																
Stg #		Start Date		Top (ftKB)		Btm (ftKB)		Vol Clean...		Vol Slurry...		Comment				
11		5/11/2015		11,569.4		11,572.1		5496.00		5642.00		Slickwater:5496 bbl				
Stim/Treat Additives																
Stg #		Add		Type		Amount		Units		Sand Size						
11		Proppant		Ottawa 30/50		115,934.0		lb		30/50						
11		Proppant		Ottawa 40/70		1,665.0		lb		40/70						
Interval 12																
Stg #		Start Date		Top (ftKB)		Btm (ftKB)		Vol Clean...		Vol Slurry...		Comment				
12		5/11/2015		11,342.7		11,345.4		5897.00		6019.00		Slickwater:5897 bbl				
Stim/Treat Additives																
Stg #		Add		Type		Amount		Units		Sand Size						
12		Proppant		Ottawa 30/50		102,084.0		lb		30/50						
12		Proppant		Ottawa 40/70		2,866.0		lb		40/70						
Interval 13																
Stg #		Start Date		Top (ftKB)		Btm (ftKB)		Vol Clean...		Vol Slurry...		Comment				
13		5/11/2015		11,116.1		11,118.7		5486.00		5631.00		Slickwater:5486 bbl				
Stim/Treat Additives																
Stg #		Add		Type		Amount		Units		Sand Size						
13		Proppant		Ottawa 30/50		127,974.0		lb		30/50						
13		Proppant		Ottawa 40/70		3,209.0		lb		40/70						



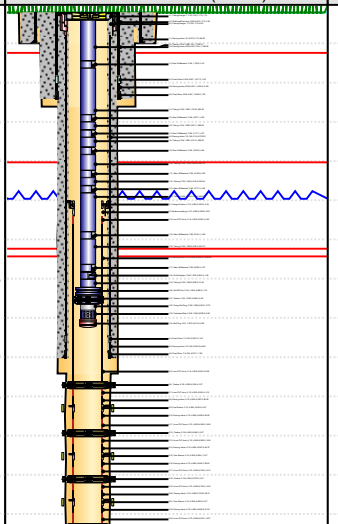
Lease Review All - Frac Summary

Well Name: RAZOR 11G-0209A

API Number 051233873100		WPC ID 1CO0761182		Well Permit Number		Field Name DJ Horizontal Niobrara			County Weld		State CO				
Well Configuration Type Lateral/Horizontal				Orig KB Elv (ft) 4,989.70		Ground Elevation (ft) 4,972.90		Casing Flange Elevation (ft)		Tubing Head Elevation (ft)		Total Depth (ftKB) 13,538.0			
Original Spud Date 1/30/2015		Completion Date 5/13/2015		Asset Group Redtail			Responsible Engineer Charles Ohlson			N/S Dist (ft) 2,321.0		N/S Ref FNL	E/W Dist (ft) 1,782.0		E/W Ref FEL
Lot	Quarter 1 SW	Quarter 2 NE	Quarter 3	Quarter 4	Section 11	Section Suffix	Section Type	Township 10	N	Township N/S Dir	Range 58	W	Range E/W Dir	Meridian	

Lateral/Horizontal - Original Hole, 8/19/2015 2:40:25 PM										Stim/Treat Stages									
MD (ftKB)	D (ft K B)	n c l (	Logs	Interval 14														
					Stg #	Start Date	Top (ftKB)	Btm (ftKB)	Vol Clean...	Vol Slurry...	Comment								
					14	5/11/2015	10,889.9	10,892.5	5440.00	5583.00	Slickwater:5440 bbl								
					Stim/Treat Additives														
					Stg #	Add		Type		Amount		Units	Sand Size						
					14	Proppant		Ottawa 30/50		125,598.0		lb	30/50						
					14	Proppant		Ottawa 40/70		3,136.0		lb	40/70						
					Interval 15														
					Stg #	Start Date	Top (ftKB)	Btm (ftKB)	Vol Clean...	Vol Slurry...	Comment								
					15	5/11/2015	10,661.4	10,664.1	5450.00	5593.00	Slickwater:5450 bbl								
					Stim/Treat Additives														
					Stg #	Add		Type		Amount		Units	Sand Size						
					15	Proppant		Ottawa 30/50		125,648.0		lb	30/50						
					15	Proppant		Ottawa 40/70		2,913.0		lb	40/70						
					Interval 16														
					Stg #	Start Date	Top (ftKB)	Btm (ftKB)	Vol Clean...	Vol Slurry...	Comment								
					16	5/11/2015	10,439.3	10,442.0	5362.00	5506.00	Slickwater:5362 bbl								
					Stim/Treat Additives														
					Stg #	Add		Type		Amount		Units	Sand Size						
					16	Proppant		Ottawa 30/50		125,286.0		lb	30/50						
					16	Proppant		Ottawa 40/70		2,807.0		lb	40/70						
					Interval 17														
					Stg #	Start Date	Top (ftKB)	Btm (ftKB)	Vol Clean...	Vol Slurry...	Comment								
					17	5/11/2015	10,224.3	10,226.9	5349.00	5493.00	Slickwater:5349 bbl								
					Stim/Treat Additives														
Stg #	Add		Type		Amount		Units	Sand Size											
17	Proppant		Ottawa 30/50		119,698.0		lb	30/50											
17	Proppant		Ottawa 40/70		2,961.0		lb	40/70											
Interval 18																			
Stg #	Start Date	Top (ftKB)	Btm (ftKB)	Vol Clean...	Vol Slurry...	Comment													
18	5/12/2015	9,999.0	10,001.7	5371.00	5516.00	Slickwater:5371 bbl													
Stim/Treat Additives																			
Stg #	Add		Type		Amount		Units	Sand Size											
18	Proppant		Ottawa 30/50		118,433.0		lb	30/50											
18	Proppant		Ottawa 40/70		2,812.0		lb	40/70											
Interval 19																			
Stg #	Start Date	Top (ftKB)	Btm (ftKB)	Vol Clean...	Vol Slurry...	Comment													
19	5/12/2015	9,777.3	9,779.9	5054.00	5170.00	Slickwater:5054 bbl													
Stim/Treat Additives																			
Stg #	Add		Type		Amount		Units	Sand Size											
19	Proppant		Ottawa 30/50		98,523.0		lb	30/50											
19	Proppant		Ottawa 40/70		3,641.0		lb	40/70											
Interval 20																			
Stg #	Start Date	Top (ftKB)	Btm (ftKB)	Vol Clean...	Vol Slurry...	Comment													
20	5/12/2015	9,547.6	9,550.2	5827.00	5969.00	Slickwater:5827 bbl													
Stim/Treat Additives																			
Stg #	Add		Type		Amount		Units	Sand Size											
20	Proppant		Ottawa 30/50		115,007.0		lb	30/50											
20	Proppant		Ottawa 40/70		2,740.0		lb	40/70											
Interval 21																			
Stg #	Start Date	Top (ftKB)	Btm (ftKB)	Vol Clean...	Vol Slurry...	Comment													
21	5/12/2015	9,325.3	9,328.0	5293.00	5433.00	Slickwater:5293 bbl													
Stim/Treat Additives																			
Stg #	Add		Type		Amount		Units	Sand Size											
21	Proppant		Ottawa 30/50		114,234.0		lb	30/50											
21	Proppant		Ottawa 40/70		2,312.0		lb	40/70											
Interval 22																			
Stg #	Start Date	Top (ftKB)	Btm (ftKB)	Vol Clean...	Vol Slurry...	Comment													
22	5/12/2015	9,099.8	9,102.5	5327.00	5471.00	Slickwater:5327 bbl													
Stim/Treat Additives																			
Stg #	Add		Type		Amount		Units	Sand Size											
22	Proppant		Ottawa 30/50		114,291.5		lb	30/50											
22	Proppant		Ottawa 40/70		2,576.0		lb	40/70											
Interval 23																			
Stg #	Start Date	Top (ftKB)	Btm (ftKB)	Vol Clean...	Vol Slurry...	Comment													
23	5/12/2015	8,878.2	8,880.9	5322.00	5465.00	Slickwater:5322 bbl													
Stim/Treat Additives																			
Stg #	Add		Type		Amount		Units	Sand Size											
23	Proppant		Ottawa 30/50		106,449.0		lb	30/50											
23	Proppant		Ottawa 40/70		2,380.0		lb	40/70											
Interval 24																			
Stg #	Start Date	Top (ftKB)	Btm (ftKB)	Vol Clean...	Vol Slurry...	Comment													
24	5/12/2015	8,650.6	8,653.2	5307.00	5449.00	Slickwater:5307 bbl													
Stim/Treat Additives																			
Stg #	Add		Type		Amount		Units	Sand Size											
24	Proppant		Ottawa 30/50		107,706.0		lb	30/50											
24	Proppant		Ottawa 40/70		1,994.0		lb	40/70											
Interval 25																			
Stg #	Start Date	Top (ftKB)	Btm (ftKB)	Vol Clean...	Vol Slurry...	Comment													
25	5/12/2015	8,425.8	8,428.5	5328.00	5472.00	Slickwater:5328 bbl													



Lateral/Horizontal - Original Hole, 8/19/2015 2:40:36 PM					Item Des	OD (in)	ID (in)	Len (ft)	Top (ftKB)	Btm (ftKB)
MD (ftKB)	D (ft K B)	n c l (	Logs	Gas Lift Mandrel	2 3/8		4.09	2,527.1	2,531.1
					Tubing	2 3/8	1.995	586.00	2,531.1	3,117.1
					Gas Lift Mandrel	2 3/8		4.07	3,117.1	3,121.2
97.1	87.1	13			Tubing	2 3/8	1.995	558.29	3,121.2	3,679.5
1,818.9	1,280.3	112			Gas Lift Mandrel	2 3/8		4.08	3,679.5	3,683.6
2,531.2	2,481.5	84			Tubing	2 3/8	1.995	557.19	3,683.6	4,240.8
3,826.1	3,718.7	144			Gas Lift Mandrel	2 3/8		4.05	4,240.8	4,244.8
5,300.2	5,162.0	18			Tubing	2 3/8	1.995	526.44	4,244.8	4,771.3
5,338.3	5,200.0	18			Gas Lift Mandrel	2 3/8		4.09	4,771.3	4,775.4
5,965.6	5,746.8	218			Tubing	2 3/8	1.995	558.77	4,775.4	5,334.1
6,013.5	5,778.9	361			Gas Lift Mandrel	2 3/8		4.09	5,334.1	5,338.2
6,338.6	5,884.2	454			Tubing	2 3/8	1.995	622.15	5,338.2	5,960.4
6,367.5	5,886.8	463			Gas Lift Mandrel	2 3/8		4.07	5,960.4	5,964.4
6,550.2	5,880.4	674			Profile Nipple	2 3/8	1.870	1.06	5,964.4	5,965.5
6,732.6	5,888.0	864			Tubing	2 3/8	1.995	31.40	5,965.5	5,996.9
6,910.1	5,887.4	1071			On-Off Tool	3 3/4	1.984	1.35	5,996.9	5,998.2
					Packer	3 3/4	1.950	6.49	5,998.2	6,004.7
					Pump Out Plug	2 3/8	1.500	0.78	6,004.7	6,005.5
					Perforated Sub	2 3/8	1.995	8.08	6,005.5	6,013.6
					Bull Plug	2.61	1.975	0.68	6,013.6	6,014.3

[illegible]