

# **BONANZA CREEK ENERGY INC.**

**WELD COUNTY, COLORADO (NAD 83)**

**SE SE SEC. 13 T5N R63W 6th P.M.**

**NORTH PLATTE T44-P41-13HNC**

**ORIGINAL WELLBORE**

**21 July, 2015**

**Plan: PROPOSAL #1**





Project: WELD COUNTY, COLORADO (NAD 83)  
Site: SE SE SEC. 13 T5N R63W 6th P.M.  
Well: NORTH PLATTE T44-P41-13HNC  
Wellbore: ORIGINAL WELLBORE  
Design: PROPOSAL #1

ANNOTATIONS

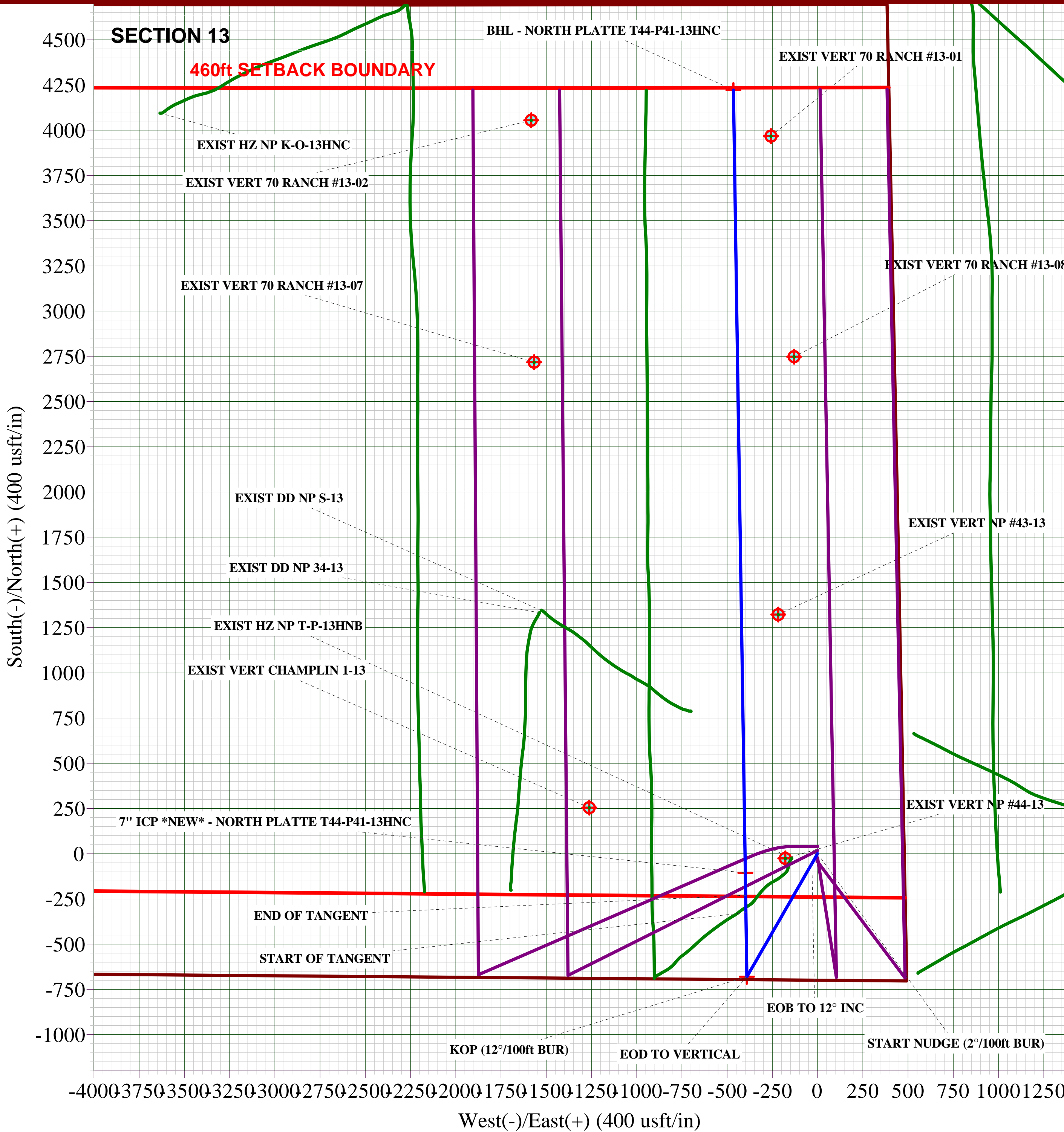
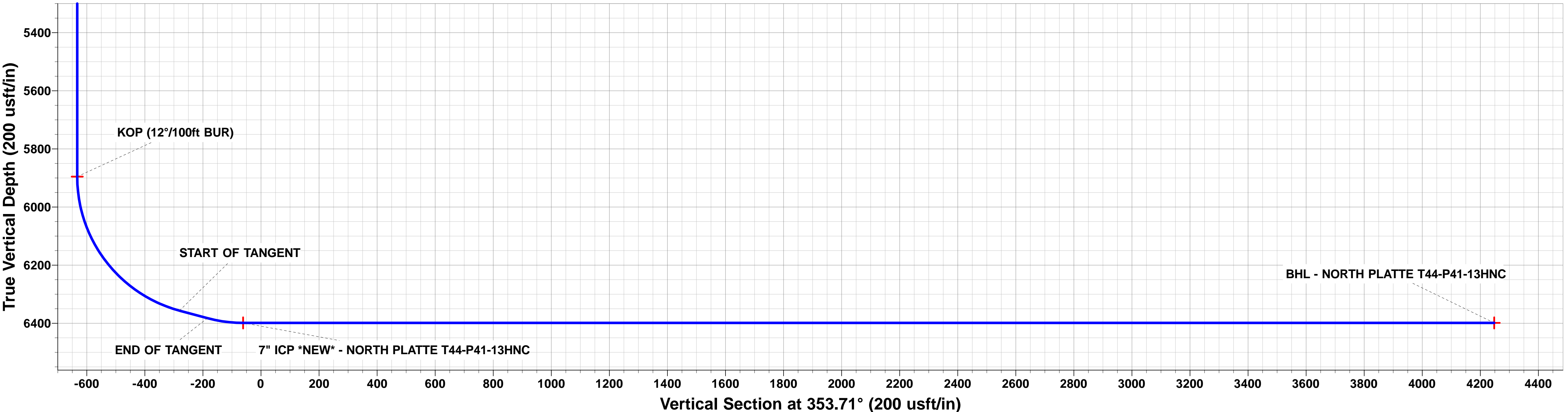
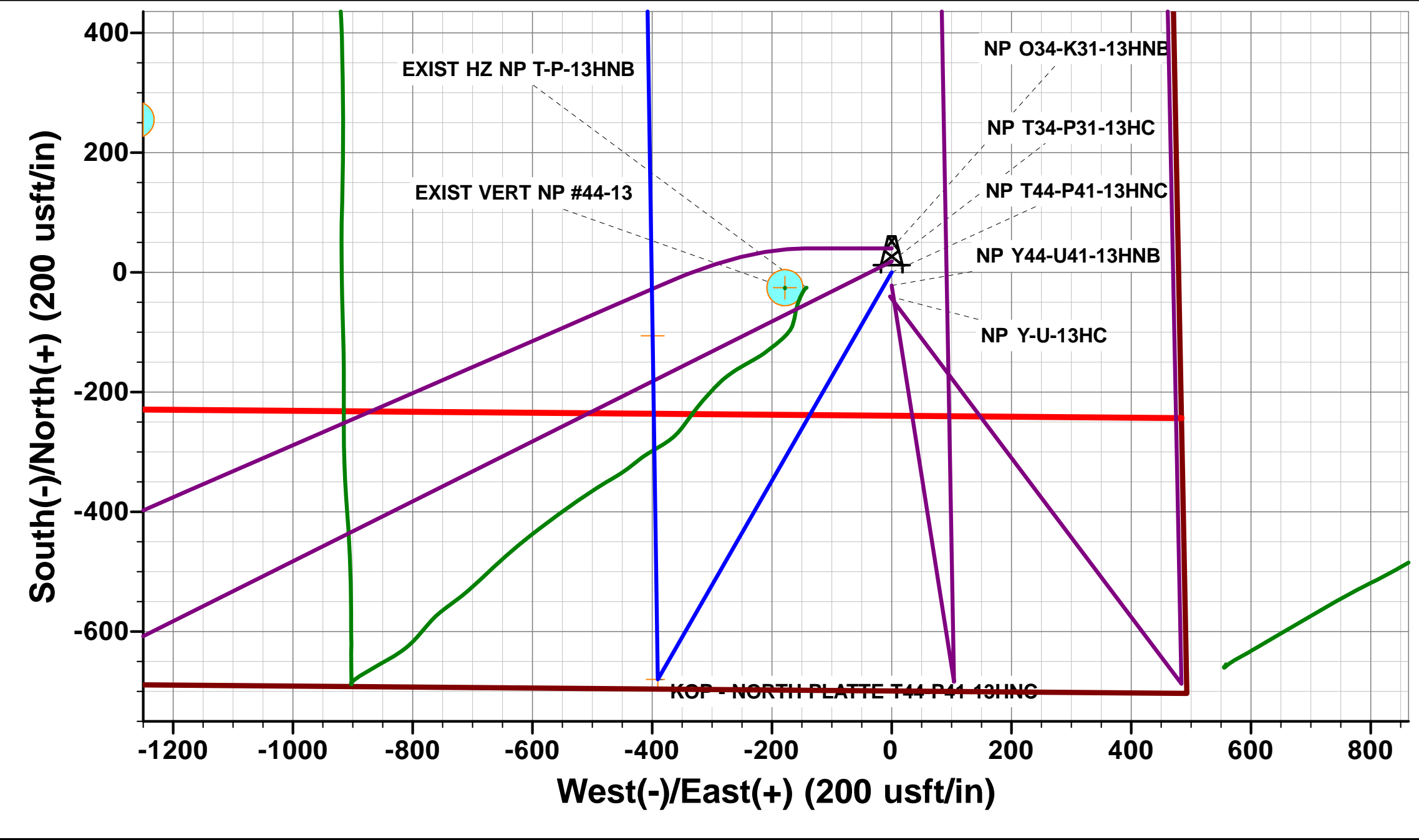
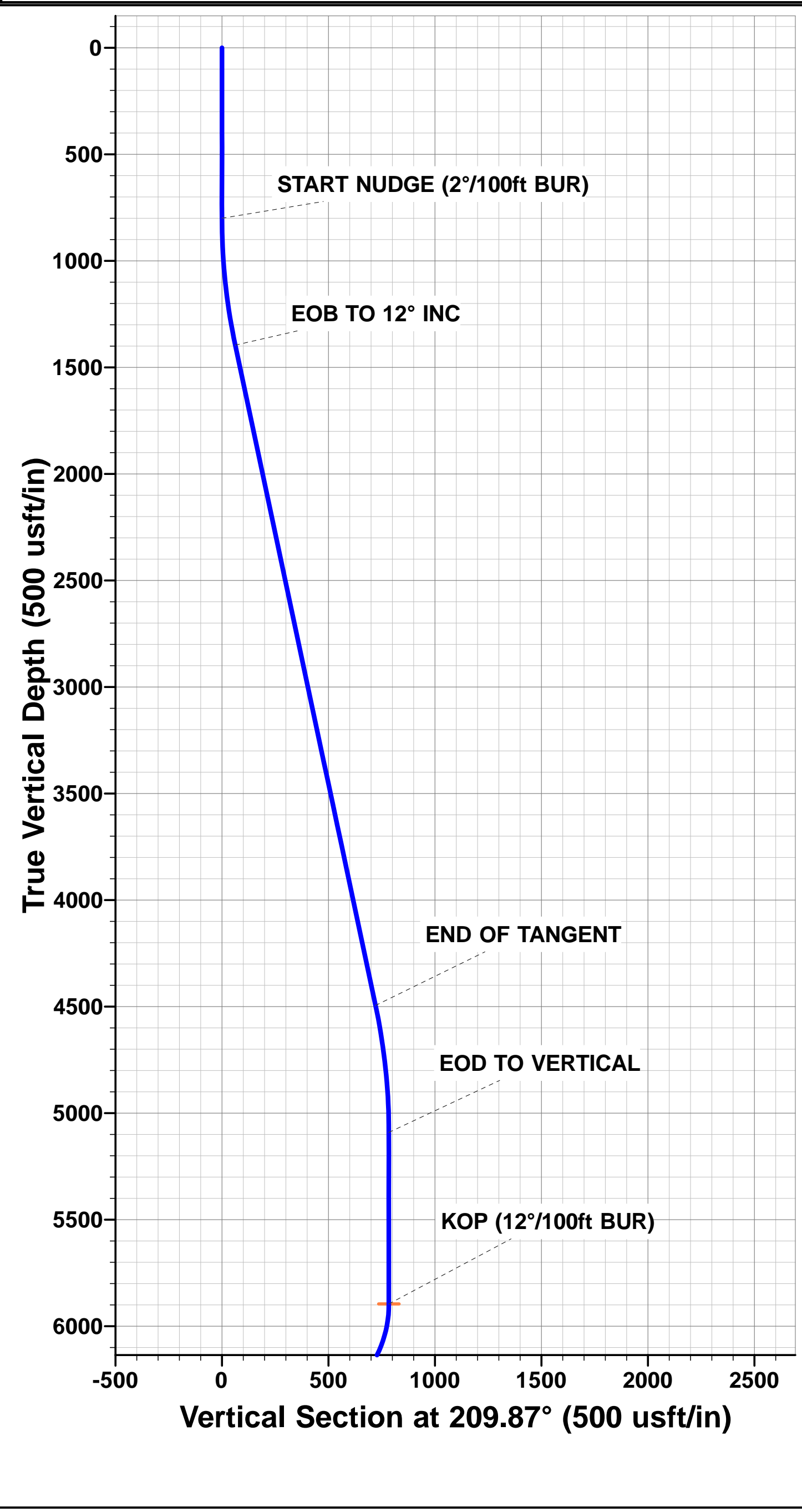
TVD	MD	Inc	Azi	+N/-S	+E/-W	VSec	Dep	Annotation
800.0	800.0	0.00	0.00	0.0	0.0	0.0	0.0	START NUDDGE (2°/100ft BUR)
1395.6	1400.0	12.00	209.87	-54.3	-31.2	-50.5	62.6	EOB TO 12° INC
4494.9	4568.5	12.00	209.87	-625.5	-359.3	-582.4	721.4	END OF TANGENT
5090.5	5168.5	0.00	0.00	-679.8	-390.5	-633.0	784.0	EOD TO VERTICAL
5895.5	5973.5	0.00	0.00	-679.8	-390.5	-633.0	784.0	KOP (12°/100ft BUR)
6356.7	6598.5	75.00	359.13	-326.0	-395.9	-280.7	1137.9	START OF TANGENT
6382.6	6698.5	75.00	359.13	-229.4	-397.3	-184.5	1234.5	END OF TANGENT
6398.8	6823.5	90.00	359.13	-105.8	-399.2	-61.5	1358.0	7" ICP *NEW* - NORTH PLATTE T44-P41-13HNC
6398.8	11152.2	90.00	359.13	4222.4	-465.1	4247.9	5686.7	BHL - NORTH PLATTE T44-P41-13HNC

PROPOSED LOCAL COORDINATES:

SHL: 699ft FSL & 480ft FEL Sec 13  
7" ICP \*NEW\*: 589.1ft FSL & 881ft FEL Sec 13  
BHL: 470ft FNL & 860ft FEL Sec 13

WELLBORE TARGET DETAILS (LAT/LONG)

Name	TVD	+N/-S	+E/-W	Latitude	Longitude
KOP - NORTH PLATTE T44-P41-13HNC	5895.5	-679.8	-390.5	40.391894	-104.378232
7" ICP *NEW* - NORTH PLATTE T44-P41-13HNC	6398.8	-105.8	-399.2	40.393470	-104.378263
BHL - NORTH PLATTE T44-P41-13HNC	6398.8	4222.4	-465.1	40.405350	-104.378500



<b>Database:</b>	EDM 5000.1 Single User Db	<b>Local Co-ordinate Reference:</b>	Well NORTH PLATTE T44-P41-13HNC
<b>Company:</b>	BONANZA CREEK ENERGY INC.	<b>TVD Reference:</b>	KB-EST @ 4613.8usft (Original Well Elev)
<b>Project:</b>	WELD COUNTY, COLORADO (NAD 83)	<b>MD Reference:</b>	KB-EST @ 4613.8usft (Original Well Elev)
<b>Site:</b>	SE SE SEC. 13 T5N R63W 6th P.M.	<b>North Reference:</b>	True
<b>Well:</b>	NORTH PLATTE T44-P41-13HNC	<b>Survey Calculation Method:</b>	Minimum Curvature
<b>Wellbore:</b>	ORIGINAL WELLBORE		
<b>Design:</b>	PROPOSAL #1		

<b>Project</b>	WELD COUNTY, COLORADO (NAD 83)		
<b>Map System:</b>	US State Plane 1983	<b>System Datum:</b>	Mean Sea Level
<b>Geo Datum:</b>	North American Datum 1983		
<b>Map Zone:</b>	Colorado Northern Zone		Using geodetic scale factor

Site		SE SE SEC. 13 T5N R63W 6th P.M.			
Site Position:		Northing:	1,388,308.49 usft	Latitude:	40.393870
From:	Lat/Long	Easting:	3,312,834.40 usft	Longitude:	-104.376830
Position Uncertainty:	0.0 usft	Slot Radius:	1.10000ft	Grid Convergence:	0.73 °

Well	NORTH PLATTE T44-P41-13HNC					
Well Position	+N/-S	-40.1 usft	Northing:	1,388,268.41 usft	Latitude:	40.393760
	+E/-W	0.0 usft	Easting:	3,312,834.91 usft	Longitude:	-104.376830
Position Uncertainty		0.0 usft	Wellhead Elevation:	usft	Ground Level:	4,596.8 usft

<b>Wellbore</b>	ORIGINAL WELLBORE				
<b>Magnetics</b>	<b>Model Name</b>	<b>Sample Date</b>	<b>Declination (°)</b>	<b>Dip Angle (°)</b>	<b>Field Strength (nT)</b>
	IGRF2015	21/07/2015	8.20	66.96	52,649

<b>Design</b>	PROPOSAL #1			
<b>Audit Notes:</b>				
<b>Version:</b>	<b>Phase:</b>	PROTOTYPE	<b>Tie On Depth:</b>	0.0
<b>Vertical Section:</b>	<b>Depth From (TVD) (usft)</b>	<b>+N/-S (usft)</b>	<b>+E/-W (usft)</b>	<b>Direction (°)</b>
	0.0	0.0	0.0	353.71

<b>Plan Sections</b>											
MD (usft)	Inc (°)	Azi (°)	Vertical Depth	SS (usft)	+N/-S (usft)	+E/-W (usft)	Dogleg Rate (°/100usf)	Build Rate (°/100usf)	Turn Rate (°/100usf)	TFO (°)	Target
0.0	0.00	0.00	0.0	-4,613.8	0.0	0.0	0.00	0.00	0.00	0.00	
800.0	0.00	0.00	800.0	-3,813.8	0.0	0.0	0.00	0.00	0.00	0.00	
1,400.0	12.00	209.87	1,395.6	-3,218.2	-54.3	-31.2	2.00	2.00	0.00	209.87	
4,568.5	12.00	209.87	4,494.9	-118.9	-625.5	-359.3	0.00	0.00	0.00	0.00	
5,168.5	0.00	0.00	5,090.5	476.7	-679.8	-390.5	2.00	-2.00	0.00	180.00	
5,973.5	0.00	0.00	5,895.5	1,281.7	-679.8	-390.5	0.00	0.00	0.00	0.00	KOP - NORTH PLA
6,598.5	75.00	359.13	6,356.7	1,742.9	-326.0	-395.9	12.00	12.00	0.00	359.13	
6,698.5	75.00	359.13	6,382.6	1,768.8	-229.4	-397.3	0.00	0.00	0.00	0.00	
6,823.5	90.00	359.13	6,398.8	1,785.0	-105.8	-399.2	12.00	12.00	0.00	0.00	
11,152.2	90.00	359.13	6,398.8	1,785.0	4,222.4	-465.1	0.00	0.00	0.00	-72.90	BHL - NORTH PLA

<b>Database:</b>	EDM 5000.1 Single User Db	<b>Local Co-ordinate Reference:</b>	Well NORTH PLATTE T44-P41-13HNC
<b>Company:</b>	BONANZA CREEK ENERGY INC.	<b>TVD Reference:</b>	KB-EST @ 4613.8usft (Original Well Elev)
<b>Project:</b>	WELD COUNTY, COLORADO (NAD 83)	<b>MD Reference:</b>	KB-EST @ 4613.8usft (Original Well Elev)
<b>Site:</b>	SE SE SEC. 13 T5N R63W 6th P.M.	<b>North Reference:</b>	True
<b>Well:</b>	NORTH PLATTE T44-P41-13HNC	<b>Survey Calculation Method:</b>	Minimum Curvature
<b>Wellbore:</b>	ORIGINAL WELLBORE		
<b>Design:</b>	PROPOSAL #1		

## Planned Survey

MD (usft)	Inc (°)	Azi (°)	TVD (usft)	SS (usft)	+N/-S (usft)	+E/-W (usft)	Vertical Section (usft)	Dogleg Rate (°/100usft)	Build Rate (°/100usft)	Turn Rate (°/100usft)
0.0	0.00	0.00	0.0	4,613.80	0.0	0.0	0.0	0.00	0.00	0.00
100.0	0.00	0.00	100.0	4,513.80	0.0	0.0	0.0	0.00	0.00	0.00
200.0	0.00	0.00	200.0	4,413.80	0.0	0.0	0.0	0.00	0.00	0.00
300.0	0.00	0.00	300.0	4,313.80	0.0	0.0	0.0	0.00	0.00	0.00
400.0	0.00	0.00	400.0	4,213.80	0.0	0.0	0.0	0.00	0.00	0.00
500.0	0.00	0.00	500.0	4,113.80	0.0	0.0	0.0	0.00	0.00	0.00
600.0	0.00	0.00	600.0	4,013.80	0.0	0.0	0.0	0.00	0.00	0.00
700.0	0.00	0.00	700.0	3,913.80	0.0	0.0	0.0	0.00	0.00	0.00
<b>START NUDGE (2°/100ft BUR)</b>										
800.0	0.00	0.00	800.0	3,813.80	0.0	0.0	0.0	0.00	0.00	0.00
900.0	2.00	209.87	900.0	3,713.82	-1.5	-0.9	-1.4	2.00	2.00	0.00
1,000.0	4.00	209.87	999.8	3,613.96	-6.1	-3.5	-5.6	2.00	2.00	0.00
1,100.0	6.00	209.87	1,099.5	3,514.35	-13.6	-7.8	-12.7	2.00	2.00	0.00
1,200.0	8.00	209.87	1,198.7	3,415.10	-24.2	-13.9	-22.5	2.00	2.00	0.00
1,300.0	10.00	209.87	1,297.5	3,316.33	-37.7	-21.7	-35.1	2.00	2.00	0.00
<b>EOB TO 12° INC</b>										
1,400.0	12.00	209.87	1,395.6	3,218.17	-54.3	-31.2	-50.5	2.00	2.00	0.00
1,500.0	12.00	209.87	1,493.4	3,120.36	-72.3	-41.5	-67.3	0.00	0.00	0.00
1,600.0	12.00	209.87	1,591.3	3,022.55	-90.3	-51.9	-84.1	0.00	0.00	0.00
1,700.0	12.00	209.87	1,689.1	2,924.73	-108.4	-62.3	-100.9	0.00	0.00	0.00
1,800.0	12.00	209.87	1,786.9	2,826.92	-126.4	-72.6	-117.7	0.00	0.00	0.00
1,900.0	12.00	209.87	1,884.7	2,729.10	-144.4	-83.0	-134.5	0.00	0.00	0.00
2,000.0	12.00	209.87	1,982.5	2,631.29	-162.5	-93.3	-151.3	0.00	0.00	0.00
2,100.0	12.00	209.87	2,080.3	2,533.47	-180.5	-103.7	-168.0	0.00	0.00	0.00
2,200.0	12.00	209.87	2,178.1	2,435.66	-198.5	-114.0	-184.8	0.00	0.00	0.00
2,300.0	12.00	209.87	2,276.0	2,337.84	-216.5	-124.4	-201.6	0.00	0.00	0.00
2,400.0	12.00	209.87	2,373.8	2,240.03	-234.6	-134.7	-218.4	0.00	0.00	0.00
2,500.0	12.00	209.87	2,471.6	2,142.21	-252.6	-145.1	-235.2	0.00	0.00	0.00
2,600.0	12.00	209.87	2,569.4	2,044.40	-270.6	-155.5	-252.0	0.00	0.00	0.00
2,700.0	12.00	209.87	2,667.2	1,946.59	-288.7	-165.8	-268.8	0.00	0.00	0.00
2,800.0	12.00	209.87	2,765.0	1,848.77	-306.7	-176.2	-285.6	0.00	0.00	0.00
2,900.0	12.00	209.87	2,862.8	1,750.96	-324.7	-186.5	-302.3	0.00	0.00	0.00
3,000.0	12.00	209.87	2,960.7	1,653.14	-342.7	-196.9	-319.1	0.00	0.00	0.00
3,100.0	12.00	209.87	3,058.5	1,555.33	-360.8	-207.2	-335.9	0.00	0.00	0.00
3,200.0	12.00	209.87	3,156.3	1,457.51	-378.8	-217.6	-352.7	0.00	0.00	0.00
3,300.0	12.00	209.87	3,254.1	1,359.70	-396.8	-227.9	-369.5	0.00	0.00	0.00
3,400.0	12.00	209.87	3,351.9	1,261.88	-414.9	-238.3	-386.3	0.00	0.00	0.00
3,500.0	12.00	209.87	3,449.7	1,164.07	-432.9	-248.7	-403.1	0.00	0.00	0.00
3,600.0	12.00	209.87	3,547.5	1,066.25	-450.9	-259.0	-419.8	0.00	0.00	0.00
3,700.0	12.00	209.87	3,645.4	968.44	-468.9	-269.4	-436.6	0.00	0.00	0.00
3,800.0	12.00	209.87	3,743.2	870.62	-487.0	-279.7	-453.4	0.00	0.00	0.00
3,900.0	12.00	209.87	3,841.0	772.81	-505.0	-290.1	-470.2	0.00	0.00	0.00
4,000.0	12.00	209.87	3,938.8	674.99	-523.0	-300.4	-487.0	0.00	0.00	0.00
4,100.0	12.00	209.87	4,036.6	577.18	-541.1	-310.8	-503.8	0.00	0.00	0.00
4,200.0	12.00	209.87	4,134.4	479.36	-559.1	-321.2	-520.6	0.00	0.00	0.00
4,300.0	12.00	209.87	4,232.3	381.55	-577.1	-331.5	-537.3	0.00	0.00	0.00
4,400.0	12.00	209.87	4,330.1	283.73	-595.1	-341.9	-554.1	0.00	0.00	0.00
4,500.0	12.00	209.87	4,427.9	185.92	-613.2	-352.2	-570.9	0.00	0.00	0.00
<b>END OF TANGENT</b>										
4,568.5	12.00	209.87	4,494.9	118.93	-625.5	-359.3	-582.4	0.00	0.00	0.00
4,600.0	11.37	209.87	4,525.7	88.07	-631.0	-362.5	-587.6	2.00	-2.00	0.00
4,700.0	9.37	209.87	4,624.1	-10.29	-646.7	-371.5	-602.1	2.00	-2.00	0.00
4,800.0	7.37	209.87	4,723.0	-109.22	-659.3	-378.7	-613.9	2.00	-2.00	0.00



<b>Database:</b>	EDM 5000.1 Single User Db	<b>Local Co-ordinate Reference:</b>	Well NORTH PLATTE T44-P41-13HNC
<b>Company:</b>	BONANZA CREEK ENERGY INC.	<b>TVD Reference:</b>	KB-EST @ 4613.8usft (Original Well Elev)
<b>Project:</b>	WELD COUNTY, COLORADO (NAD 83)	<b>MD Reference:</b>	KB-EST @ 4613.8usft (Original Well Elev)
<b>Site:</b>	SE SE SEC. 13 T5N R63W 6th P.M.	<b>North Reference:</b>	True
<b>Well:</b>	NORTH PLATTE T44-P41-13HNC	<b>Survey Calculation Method:</b>	Minimum Curvature
<b>Wellbore:</b>	ORIGINAL WELLBORE		
<b>Design:</b>	PROPOSAL #1		

## Planned Survey

MD (usft)	Inc (°)	Azi (°)	TVD (usft)	SS (usft)	+N/-S (usft)	+E/-W (usft)	Vertical Section (usft)	Dogleg Rate (°/100usft)	Build Rate (°/100usft)	Turn Rate (°/100usft)
4,900.0	5.37	209.87	4,822.4	-208.60	-668.9	-384.2	-622.8	2.00	-2.00	0.00
5,000.0	3.37	209.87	4,922.1	-308.30	-675.5	-388.0	-629.0	2.00	-2.00	0.00
5,100.0	1.37	209.87	5,022.0	-408.21	-679.1	-390.1	-632.3	2.00	-2.00	0.00
<b>EOD TO VERTICAL</b>										
<b>5,168.5</b>	<b>0.00</b>	<b>0.00</b>	<b>5,090.5</b>	<b>-476.70</b>	<b>-679.8</b>	<b>-390.5</b>	<b>-633.0</b>	<b>2.00</b>	<b>-2.00</b>	<b>0.00</b>
5,200.0	0.00	0.00	5,122.0	-508.21	-679.8	-390.5	-633.0	0.00	0.00	0.00
5,300.0	0.00	0.00	5,222.0	-608.21	-679.8	-390.5	-633.0	0.00	0.00	0.00
5,400.0	0.00	0.00	5,322.0	-708.21	-679.8	-390.5	-633.0	0.00	0.00	0.00
5,500.0	0.00	0.00	5,422.0	-808.21	-679.8	-390.5	-633.0	0.00	0.00	0.00
5,600.0	0.00	0.00	5,522.0	-908.21	-679.8	-390.5	-633.0	0.00	0.00	0.00
5,700.0	0.00	0.00	5,622.0	-1,008.21	-679.8	-390.5	-633.0	0.00	0.00	0.00
5,800.0	0.00	0.00	5,722.0	-1,108.21	-679.8	-390.5	-633.0	0.00	0.00	0.00
5,900.0	0.00	0.00	5,822.0	-1,208.21	-679.8	-390.5	-633.0	0.00	0.00	0.00
<b>KOP (12°/100ft BUR)</b>										
<b>5,973.5</b>	<b>0.00</b>	<b>0.00</b>	<b>5,895.5</b>	<b>-1,281.70</b>	<b>-679.8</b>	<b>-390.5</b>	<b>-633.0</b>	<b>0.00</b>	<b>0.00</b>	<b>0.00</b>
6,000.0	3.18	359.13	5,922.0	-1,308.19	-679.1	-390.5	-632.2	12.00	12.00	0.00
6,100.0	15.18	359.13	6,020.5	-1,406.73	-663.1	-390.8	-616.4	12.00	12.00	0.00
6,200.0	27.18	359.13	6,113.6	-1,499.81	-627.1	-391.3	-580.5	12.00	12.00	0.00
6,300.0	39.18	359.13	6,197.1	-1,583.35	-572.5	-392.1	-526.1	12.00	12.00	0.00
6,400.0	51.18	359.13	6,267.5	-1,653.71	-501.7	-393.2	-455.6	12.00	12.00	0.00
6,500.0	63.18	359.13	6,321.6	-1,707.81	-417.8	-394.5	-372.1	12.00	12.00	0.00
<b>START OF TANGENT</b>										
<b>6,598.5</b>	<b>75.00</b>	<b>359.13</b>	<b>6,356.7</b>	<b>-1,742.90</b>	<b>-326.0</b>	<b>-395.9</b>	<b>-280.7</b>	<b>12.00</b>	<b>12.00</b>	<b>0.00</b>
6,600.0	75.00	359.13	6,357.1	-1,743.29	-324.5	-395.9	-279.2	0.00	0.00	0.00
<b>END OF TANGENT</b>										
<b>6,698.5</b>	<b>75.00</b>	<b>359.13</b>	<b>6,382.6</b>	<b>-1,768.78</b>	<b>-229.4</b>	<b>-397.3</b>	<b>-184.5</b>	<b>0.00</b>	<b>0.00</b>	<b>0.00</b>
6,700.0	75.18	359.13	6,383.0	-1,769.17	-227.9	-397.4	-183.0	12.00	12.00	0.00
6,800.0	87.18	359.13	6,398.3	-1,784.47	-129.3	-398.9	-84.8	12.00	12.00	0.00
<b>7" ICP *NEW* - NORTH PLATTE T44-P41-13HNC</b>										
<b>6,823.5</b>	<b>90.00</b>	<b>359.13</b>	<b>6,398.8</b>	<b>-1,785.05</b>	<b>-105.8</b>	<b>-399.2</b>	<b>-61.5</b>	<b>12.00</b>	<b>12.00</b>	<b>0.00</b>
6,900.0	90.00	359.13	6,398.8	-1,785.05	-29.3	-400.4	14.7	0.00	0.00	0.00
7,000.0	90.00	359.13	6,398.8	-1,785.05	70.7	-401.9	114.3	0.00	0.00	0.00
7,100.0	90.00	359.13	6,398.8	-1,785.05	170.7	-403.4	213.8	0.00	0.00	0.00
7,200.0	90.00	359.13	6,398.8	-1,785.05	270.7	-404.9	313.4	0.00	0.00	0.00
7,300.0	90.00	359.13	6,398.8	-1,785.05	370.6	-406.5	412.9	0.00	0.00	0.00
7,400.0	90.00	359.13	6,398.8	-1,785.05	470.6	-408.0	512.5	0.00	0.00	0.00
7,500.0	90.00	359.13	6,398.8	-1,785.05	570.6	-409.5	612.0	0.00	0.00	0.00
7,600.0	90.00	359.13	6,398.8	-1,785.05	670.6	-411.0	711.6	0.00	0.00	0.00
7,700.0	90.00	359.13	6,398.8	-1,785.04	770.6	-412.5	811.1	0.00	0.00	0.00
7,800.0	90.00	359.13	6,398.8	-1,785.04	870.6	-414.1	910.7	0.00	0.00	0.00
7,900.0	90.00	359.13	6,398.8	-1,785.04	970.6	-415.6	1,010.2	0.00	0.00	0.00
8,000.0	90.00	359.13	6,398.8	-1,785.04	1,070.6	-417.1	1,109.8	0.00	0.00	0.00
8,100.0	90.00	359.13	6,398.8	-1,785.04	1,170.6	-418.6	1,209.3	0.00	0.00	0.00
8,200.0	90.00	359.13	6,398.8	-1,785.04	1,270.5	-420.1	1,308.9	0.00	0.00	0.00
8,300.0	90.00	359.13	6,398.8	-1,785.04	1,370.5	-421.7	1,408.5	0.00	0.00	0.00
8,400.0	90.00	359.13	6,398.8	-1,785.04	1,470.5	-423.2	1,508.0	0.00	0.00	0.00
8,500.0	90.00	359.13	6,398.8	-1,785.04	1,570.5	-424.7	1,607.6	0.00	0.00	0.00
8,600.0	90.00	359.13	6,398.8	-1,785.04	1,670.5	-426.2	1,707.1	0.00	0.00	0.00
8,700.0	90.00	359.13	6,398.8	-1,785.04	1,770.5	-427.7	1,806.7	0.00	0.00	0.00
8,800.0	90.00	359.13	6,398.8	-1,785.04	1,870.5	-429.3	1,906.2	0.00	0.00	0.00
8,900.0	90.00	359.13	6,398.8	-1,785.04	1,970.5	-430.8	2,005.8	0.00	0.00	0.00
9,000.0	90.00	359.13	6,398.8	-1,785.03	2,070.4	-432.3	2,105.3	0.00	0.00	0.00
9,100.0	90.00	359.13	6,398.8	-1,785.03	2,170.4	-433.8	2,204.9	0.00	0.00	0.00
9,200.0	90.00	359.13	6,398.8	-1,785.03	2,270.4	-435.3	2,304.4	0.00	0.00	0.00

<b>Database:</b>	EDM 5000.1 Single User Db	<b>Local Co-ordinate Reference:</b>	Well NORTH PLATTE T44-P41-13HNC
<b>Company:</b>	BONANZA CREEK ENERGY INC.	<b>TVD Reference:</b>	KB-EST @ 4613.8usft (Original Well Elev)
<b>Project:</b>	WELD COUNTY, COLORADO (NAD 83)	<b>MD Reference:</b>	KB-EST @ 4613.8usft (Original Well Elev)
<b>Site:</b>	SE SE SEC. 13 T5N R63W 6th P.M.	<b>North Reference:</b>	True
<b>Well:</b>	NORTH PLATTE T44-P41-13HNC	<b>Survey Calculation Method:</b>	Minimum Curvature
<b>Wellbore:</b>	ORIGINAL WELLBORE		
<b>Design:</b>	PROPOSAL #1		

## Planned Survey

MD (usft)	Inc (°)	Azi (°)	TVD (usft)	SS (usft)	+N/-S (usft)	+E/-W (usft)	Vertical Section (usft)	Dogleg Rate (°/100usft)	Build Rate (°/100usft)	Turn Rate (°/100usft)
9,300.0	90.00	359.13	6,398.8	-1,785.03	2,370.4	-436.9	2,404.0	0.00	0.00	0.00
9,400.0	90.00	359.13	6,398.8	-1,785.03	2,470.4	-438.4	2,503.5	0.00	0.00	0.00
9,500.0	90.00	359.13	6,398.8	-1,785.03	2,570.4	-439.9	2,603.1	0.00	0.00	0.00
9,600.0	90.00	359.13	6,398.8	-1,785.03	2,670.4	-441.4	2,702.7	0.00	0.00	0.00
9,700.0	90.00	359.13	6,398.8	-1,785.03	2,770.4	-443.0	2,802.2	0.00	0.00	0.00
9,800.0	90.00	359.13	6,398.8	-1,785.02	2,870.4	-444.5	2,901.8	0.00	0.00	0.00
9,900.0	90.00	359.13	6,398.8	-1,785.02	2,970.3	-446.0	3,001.3	0.00	0.00	0.00
10,000.0	90.00	359.13	6,398.8	-1,785.02	3,070.3	-447.5	3,100.9	0.00	0.00	0.00
10,100.0	90.00	359.13	6,398.8	-1,785.02	3,170.3	-449.1	3,200.4	0.00	0.00	0.00
10,200.0	90.00	359.13	6,398.8	-1,785.02	3,270.3	-450.6	3,300.0	0.00	0.00	0.00
10,300.0	90.00	359.13	6,398.8	-1,785.02	3,370.3	-452.1	3,399.5	0.00	0.00	0.00
10,400.0	90.00	359.13	6,398.8	-1,785.01	3,470.3	-453.6	3,499.1	0.00	0.00	0.00
10,500.0	90.00	359.13	6,398.8	-1,785.01	3,570.3	-455.1	3,598.6	0.00	0.00	0.00
10,600.0	90.00	359.13	6,398.8	-1,785.01	3,670.3	-456.7	3,698.2	0.00	0.00	0.00
10,700.0	90.00	359.13	6,398.8	-1,785.01	3,770.2	-458.2	3,797.7	0.00	0.00	0.00
10,800.0	90.00	359.13	6,398.8	-1,785.01	3,870.2	-459.7	3,897.3	0.00	0.00	0.00
10,900.0	90.00	359.13	6,398.8	-1,785.01	3,970.2	-461.2	3,996.9	0.00	0.00	0.00
11,000.0	90.00	359.13	6,398.8	-1,785.00	4,070.2	-462.8	4,096.4	0.00	0.00	0.00
11,100.0	90.00	359.13	6,398.8	-1,785.00	4,170.2	-464.3	4,196.0	0.00	0.00	0.00
<b>BHL - NORTH PLATTE T44-P41-13HNC</b>										
<b>11,152.2</b>	<b>90.00</b>	<b>359.13</b>	<b>6,398.8</b>	<b>-1,785.00</b>	<b>4,222.4</b>	<b>-465.1</b>	<b>4,247.9</b>	<b>0.00</b>	<b>0.00</b>	<b>0.00</b>

## Plan Annotations

MD (usft)	TVD (usft)	Local Coordinates		Comment
		+N/-S (usft)	+E/-W (usft)	
800.0	800.0	0.0	0.0	START NUDGE (2°/100ft BUR)
1,400.0	1,395.6	-54.3	-31.2	EOB TO 12° INC
4,568.5	4,494.9	-625.5	-359.3	END OF TANGENT
5,168.5	5,090.5	-679.8	-390.5	EOD TO VERTICAL
5,973.5	5,895.5	-679.8	-390.5	KOP (12°/100ft BUR)
6,598.5	6,356.7	-326.0	-395.9	START OF TANGENT
6,698.5	6,382.6	-229.4	-397.3	END OF TANGENT
6,823.5	6,398.8	-105.8	-399.2	7" ICP *NEW* - NORTH PLATTE T44-P41-13HNC
11,152.2	6,398.8	4,222.4	-465.1	BHL - NORTH PLATTE T44-P41-13HNC