

BONANZA CREEK ENERGY INC.

WELD COUNTY, COLORADO (NAD 83)

SE SE SEC. 13 T5N R63W 6th P.M.

NORTH PLATTE T34-P31-13HC

ORIGINAL WELLBORE

21 July, 2015

Plan: PROPOSAL #1





Project: WELD COUNTY, COLORADO (NAD 83)
Site: SE SE SEC. 13 T5N R63W 6th P.M.
Well: NORTH PLATTE T34-P31-13HC
Wellbore: ORIGINAL WELLBORE
Design: PROPOSAL #1

ANNOTATIONS

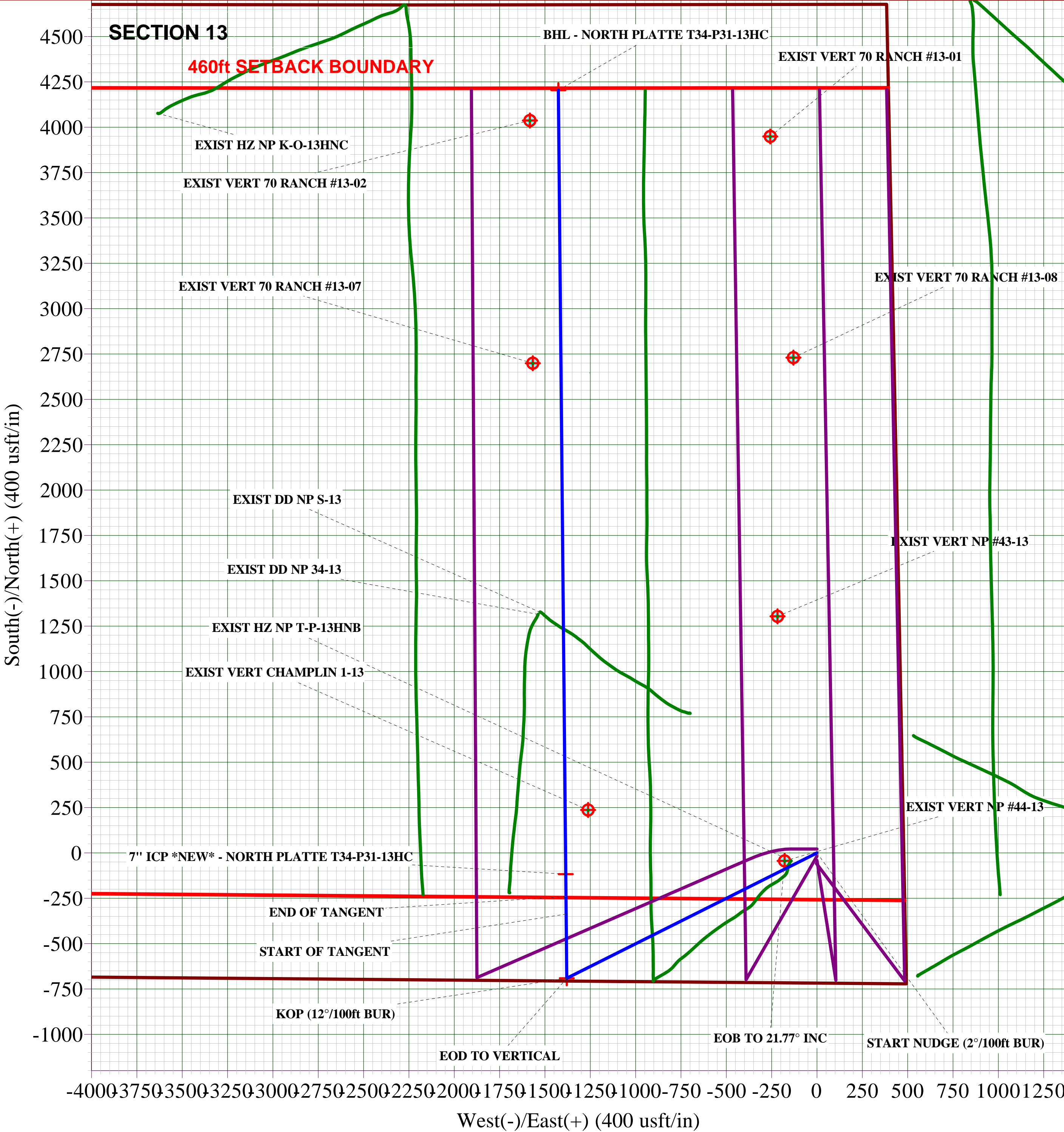
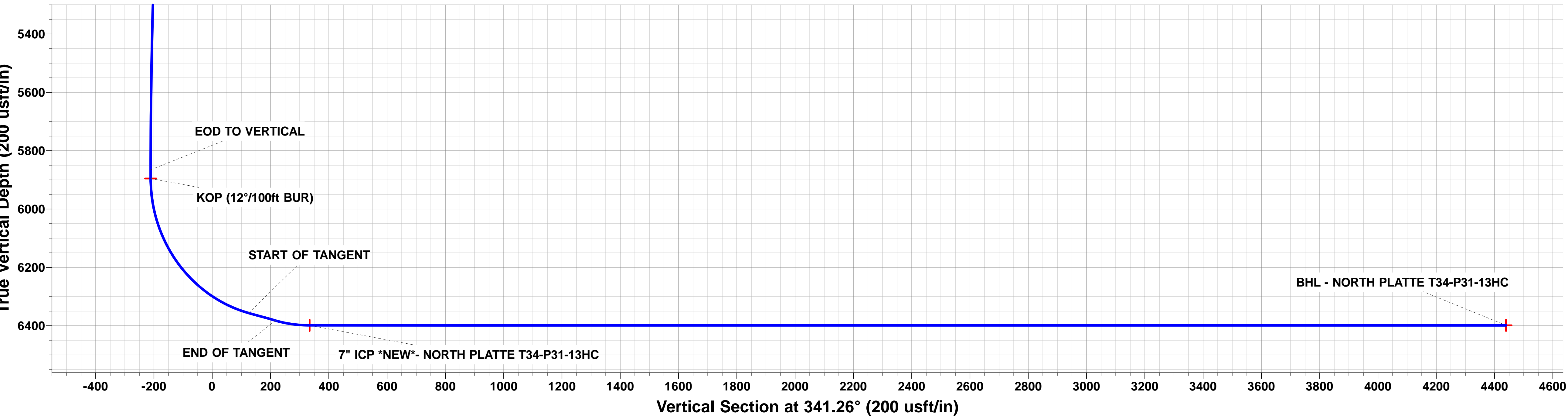
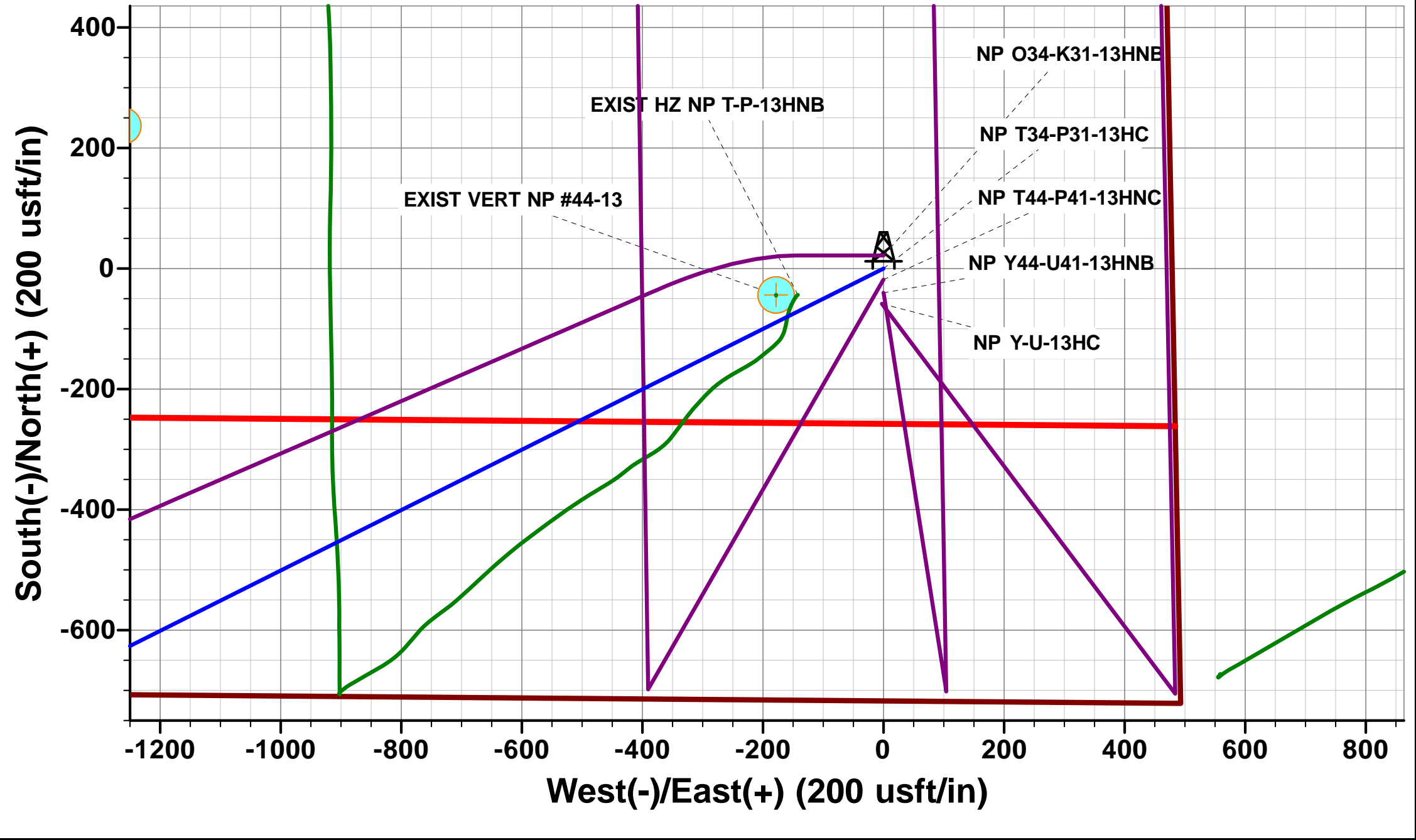
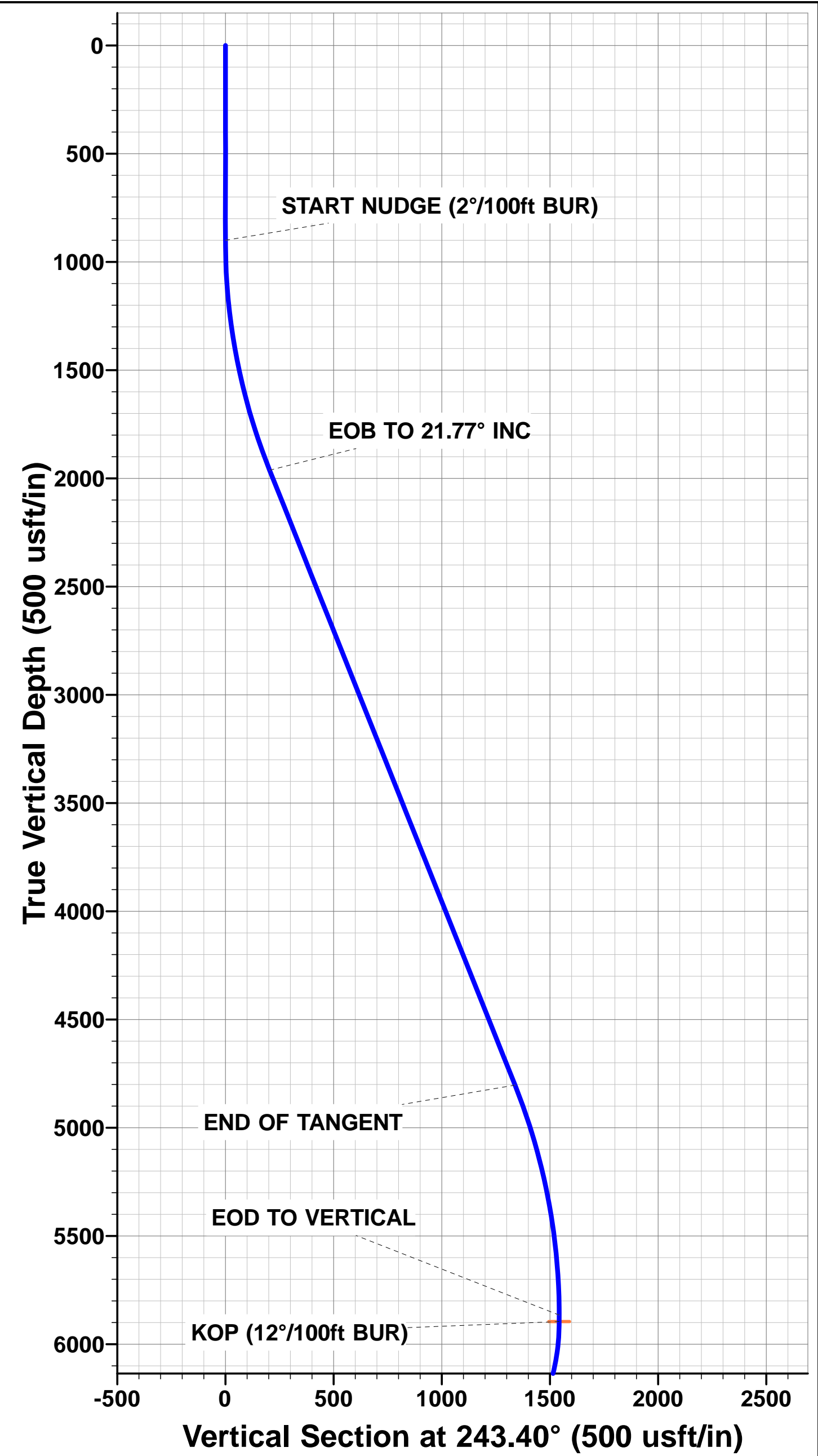
TVD	MD	Inc	Azi	+N/-S	+E/-W	VSect	Dep	Annotation
900.0	900.0	0.00	0.00	0.0	0.0	0.0	0.0	START NUDGE (2°/100ft BUR)
1962.3	1988.3	21.77	243.40	-91.5	-182.6	-27.9	204.2	EOB TO 21.77° INC
4803.2	5047.3	21.77	243.40	-599.3	-1196.9	-183.2	1338.6	END OF TANGENT
5865.5	6135.6	0.00	0.00	-690.8	-1379.5	-211.1	1542.8	EOD TO VERTICAL
5895.5	6165.6	0.00	0.00	-690.8	-1379.5	-211.1	1542.8	KOP (12°/100ft BUR)
6356.7	6790.6	75.00	359.46	-336.9	-1382.8	125.1	1896.7	START OF TANGENT
6382.6	6890.6	75.00	359.46	-240.3	-1383.7	216.8	1993.3	END OF TANGENT
6398.8	7015.6	90.00	359.46	-116.8	-1384.9	334.2	2116.9	7" ICP *NEW* - NORTH PLATTE T34-P31-13HC
6398.8	11336.7	90.00	359.45	4204.2	-1425.9	4439.4	6438.0	BHL - NORTH PLATTE T34-P31-13HC

PROPOSED LOCAL COORDINATES:

SHL: 719ft FSL & 479ft FEL Sec 13
7" ICP *NEW*: 589ft FSL & 1866ft FEL Sec 13
BHL: 470ft FNL & 1820ft FEL Sec 13

WELLBORE TARGET DETAILS (LAT/LONG)

Name	TVD	+N/-S	+E/-W	Latitude	Longitude
KOP - NORTH PLATTE T34-P31-13HC	5895.5	-690.8	-1379.5	40.391914	-104.381782
7" ICP *NEW*- NORTH PLATTE T34-P31-13HC	6398.8	-116.8	-1384.9	40.393489	-104.381802
BHL - NORTH PLATTE T34-P31-13HC	6398.8	4204.2	-1425.9	40.405350	-104.381950



Database:	EDM 5000.1 Single User Db	Local Co-ordinate Reference:	Well NORTH PLATTE T34-P31-13HC
Company:	BONANZA CREEK ENERGY INC.	TVD Reference:	KB-EST @ 4613.8usft (Original Well Elev)
Project:	WELD COUNTY, COLORADO (NAD 83)	MD Reference:	KB-EST @ 4613.8usft (Original Well Elev)
Site:	SE SE SEC. 13 T5N R63W 6th P.M.	North Reference:	True
Well:	NORTH PLATTE T34-P31-13HC	Survey Calculation Method:	Minimum Curvature
Wellbore:	ORIGINAL WELLBORE		
Design:	PROPOSAL #1		

Project	WELD COUNTY, COLORADO (NAD 83)		
Map System:	US State Plane 1983	System Datum:	Mean Sea Level
Geo Datum:	North American Datum 1983		
Map Zone:	Colorado Northern Zone		Using geodetic scale factor

Site	SE SE SEC. 13 T5N R63W 6th P.M.		
Site Position:		Northing:	1,388,308.49 usft
From:	Lat/Long	Easting:	3,312,834.40 usft
Position Uncertainty:	0.0 usft	Slot Radius:	1.10000ft
		Latitude:	40.393870
		Longitude:	-104.376830
		Grid Convergence:	0.73 °

Well	NORTH PLATTE T34-P31-13HC		
Well Position	+N-S	-21.9 usft	Northing:
	+E-W	0.0 usft	Easting:
Position Uncertainty		0.0 usft	Wellhead Elevation:
			Latitude:
			Longitude:
			Ground Level:

Wellbore	ORIGINAL WELLBORE				
Magnetics	Model Name	Sample Date	Declination (°)	Dip Angle (°)	Field Strength (nT)
	IGRF2015	21/07/2015	8.20	66.96	52,649

Design	PROPOSAL #1			
Audit Notes:				
Version:	Phase:	PROTOTYPE	Tie On Depth:	0.0
Vertical Section:	Depth From (TVD) (usft)	+N-S (usft)	+E-W (usft)	Direction (°)
	0.0	0.0	0.0	341.26

Plan Sections											
MD (usft)	Inc (°)	Azi (°)	Vertical Depth	SS (usft)	+N-S (usft)	+E-W (usft)	Dogleg Rate (°/100usf)	Build Rate (°/100usf)	Turn Rate (°/100usf)	TFO (°)	Target
0.0	0.00	0.00	0.0	-4,613.8	0.0	0.0	0.00	0.00	0.00	0.00	
900.0	0.00	0.00	900.0	-3,713.8	0.0	0.0	0.00	0.00	0.00	0.00	
1,988.3	21.77	243.40	1,962.3	-2,651.5	-91.5	-182.6	2.00	2.00	0.00	243.40	
5,047.3	21.77	243.40	4,803.2	189.4	-599.3	-1,196.9	0.00	0.00	0.00	0.00	
6,135.6	0.00	0.00	5,865.5	1,251.7	-690.8	-1,379.5	2.00	-2.00	0.00	180.00	
6,165.6	0.00	0.00	5,895.5	1,281.7	-690.8	-1,379.5	0.00	0.00	0.00	0.00	KOP - NORTH PLA
6,790.6	75.00	359.46	6,356.7	1,742.9	-336.9	-1,382.8	12.00	12.00	0.00	359.46	
6,890.6	75.00	359.46	6,382.6	1,768.8	-240.3	-1,383.7	0.00	0.00	0.00	0.00	
7,015.6	90.00	359.46	6,398.8	1,785.0	-116.8	-1,384.9	12.00	12.00	0.00	0.00	
11,336.7	90.00	359.45	6,398.8	1,785.0	4,204.2	-1,425.9	0.00	0.00	0.00	-80.56	BHL - NORTH PLA

Database:	EDM 5000.1 Single User Db	Local Co-ordinate Reference:	Well NORTH PLATTE T34-P31-13HC
Company:	BONANZA CREEK ENERGY INC.	TVD Reference:	KB-EST @ 4613.8usft (Original Well Elev)
Project:	WELD COUNTY, COLORADO (NAD 83)	MD Reference:	KB-EST @ 4613.8usft (Original Well Elev)
Site:	SE SE SEC. 13 T5N R63W 6th P.M.	North Reference:	True
Well:	NORTH PLATTE T34-P31-13HC	Survey Calculation Method:	Minimum Curvature
Wellbore:	ORIGINAL WELLBORE		
Design:	PROPOSAL #1		

Planned Survey

MD (usft)	Inc (°)	Azi (°)	TVD (usft)	SS (usft)	+N/-S (usft)	+E/-W (usft)	Vertical Section (usft)	Dogleg Rate (°/100usft)	Build Rate (°/100usft)	Turn Rate (°/100usft)
0.0	0.00	0.00	0.0	4,613.80	0.0	0.0	0.0	0.00	0.00	0.00
100.0	0.00	0.00	100.0	4,513.80	0.0	0.0	0.0	0.00	0.00	0.00
200.0	0.00	0.00	200.0	4,413.80	0.0	0.0	0.0	0.00	0.00	0.00
300.0	0.00	0.00	300.0	4,313.80	0.0	0.0	0.0	0.00	0.00	0.00
400.0	0.00	0.00	400.0	4,213.80	0.0	0.0	0.0	0.00	0.00	0.00
500.0	0.00	0.00	500.0	4,113.80	0.0	0.0	0.0	0.00	0.00	0.00
600.0	0.00	0.00	600.0	4,013.80	0.0	0.0	0.0	0.00	0.00	0.00
700.0	0.00	0.00	700.0	3,913.80	0.0	0.0	0.0	0.00	0.00	0.00
800.0	0.00	0.00	800.0	3,813.80	0.0	0.0	0.0	0.00	0.00	0.00
START NUDGE (2°/100ft BUR)										
900.0	0.00	0.00	900.0	3,713.80	0.0	0.0	0.0	0.00	0.00	0.00
1,000.0	2.00	243.40	1,000.0	3,613.82	-0.8	-1.6	-0.2	2.00	2.00	0.00
1,100.0	4.00	243.40	1,099.8	3,513.96	-3.1	-6.2	-1.0	2.00	2.00	0.00
1,200.0	6.00	243.40	1,199.5	3,414.35	-7.0	-14.0	-2.1	2.00	2.00	0.00
1,300.0	8.00	243.40	1,298.7	3,315.10	-12.5	-24.9	-3.8	2.00	2.00	0.00
1,400.0	10.00	243.40	1,397.5	3,216.33	-19.5	-38.9	-6.0	2.00	2.00	0.00
1,500.0	12.00	243.40	1,495.6	3,118.18	-28.0	-56.0	-8.6	2.00	2.00	0.00
1,600.0	14.00	243.40	1,593.1	3,020.74	-38.1	-76.1	-11.6	2.00	2.00	0.00
1,700.0	16.00	243.40	1,689.6	2,924.16	-49.7	-99.2	-15.2	2.00	2.00	0.00
1,800.0	18.00	243.40	1,785.3	2,828.53	-62.8	-125.4	-19.2	2.00	2.00	0.00
1,900.0	20.00	243.40	1,879.8	2,733.98	-77.4	-154.5	-23.6	2.00	2.00	0.00
EOB TO 21.77° INC										
1,988.3	21.77	243.40	1,962.3	2,651.49	-91.5	-182.6	-27.9	2.00	2.00	0.00
2,000.0	21.77	243.40	1,973.2	2,640.62	-93.4	-186.5	-28.5	0.00	0.00	0.00
2,100.0	21.77	243.40	2,066.0	2,547.75	-110.0	-219.7	-33.6	0.00	0.00	0.00
2,200.0	21.77	243.40	2,158.9	2,454.88	-126.6	-252.8	-38.7	0.00	0.00	0.00
2,300.0	21.77	243.40	2,251.8	2,362.01	-143.2	-286.0	-43.8	0.00	0.00	0.00
2,400.0	21.77	243.40	2,344.7	2,269.14	-159.8	-319.1	-48.8	0.00	0.00	0.00
2,500.0	21.77	243.40	2,437.5	2,176.27	-176.4	-352.3	-53.9	0.00	0.00	0.00
2,600.0	21.77	243.40	2,530.4	2,083.40	-193.0	-385.4	-59.0	0.00	0.00	0.00
2,700.0	21.77	243.40	2,623.3	1,990.53	-209.6	-418.6	-64.1	0.00	0.00	0.00
2,800.0	21.77	243.40	2,716.1	1,897.66	-226.2	-451.8	-69.1	0.00	0.00	0.00
2,900.0	21.77	243.40	2,809.0	1,804.79	-242.8	-484.9	-74.2	0.00	0.00	0.00
3,000.0	21.77	243.40	2,901.9	1,711.92	-259.4	-518.1	-79.3	0.00	0.00	0.00
3,100.0	21.77	243.40	2,994.8	1,619.05	-276.0	-551.2	-84.4	0.00	0.00	0.00
3,200.0	21.77	243.40	3,087.6	1,526.17	-292.6	-584.4	-89.4	0.00	0.00	0.00
3,300.0	21.77	243.40	3,180.5	1,433.30	-309.2	-617.5	-94.5	0.00	0.00	0.00
3,400.0	21.77	243.40	3,273.4	1,340.43	-325.8	-650.7	-99.6	0.00	0.00	0.00
3,500.0	21.77	243.40	3,366.2	1,247.56	-342.4	-683.9	-104.7	0.00	0.00	0.00
3,600.0	21.77	243.40	3,459.1	1,154.69	-359.1	-717.0	-109.7	0.00	0.00	0.00
3,700.0	21.77	243.40	3,552.0	1,061.82	-375.7	-750.2	-114.8	0.00	0.00	0.00
3,800.0	21.77	243.40	3,644.8	968.95	-392.3	-783.3	-119.9	0.00	0.00	0.00
3,900.0	21.77	243.40	3,737.7	876.08	-408.9	-816.5	-124.9	0.00	0.00	0.00
4,000.0	21.77	243.40	3,830.6	783.21	-425.5	-849.6	-130.0	0.00	0.00	0.00
4,100.0	21.77	243.40	3,923.5	690.34	-442.1	-882.8	-135.1	0.00	0.00	0.00
4,200.0	21.77	243.40	4,016.3	597.47	-458.7	-916.0	-140.2	0.00	0.00	0.00
4,300.0	21.77	243.40	4,109.2	504.60	-475.3	-949.1	-145.2	0.00	0.00	0.00
4,400.0	21.77	243.40	4,202.1	411.73	-491.9	-982.3	-150.3	0.00	0.00	0.00
4,500.0	21.77	243.40	4,294.9	318.86	-508.5	-1,015.4	-155.4	0.00	0.00	0.00
4,600.0	21.77	243.40	4,387.8	225.99	-525.1	-1,048.6	-160.5	0.00	0.00	0.00
4,700.0	21.77	243.40	4,480.7	133.12	-541.7	-1,081.7	-165.5	0.00	0.00	0.00
4,800.0	21.77	243.40	4,573.6	40.25	-558.3	-1,114.9	-170.6	0.00	0.00	0.00
4,900.0	21.77	243.40	4,666.4	-52.63	-574.9	-1,148.0	-175.7	0.00	0.00	0.00
5,000.0	21.77	243.40	4,759.3	-145.50	-591.5	-1,181.2	-180.8	0.00	0.00	0.00

Database:	EDM 5000.1 Single User Db	Local Co-ordinate Reference:	Well NORTH PLATTE T34-P31-13HC
Company:	BONANZA CREEK ENERGY INC.	TVD Reference:	KB-EST @ 4613.8usft (Original Well Elev)
Project:	WELD COUNTY, COLORADO (NAD 83)	MD Reference:	KB-EST @ 4613.8usft (Original Well Elev)
Site:	SE SE SEC. 13 T5N R63W 6th P.M.	North Reference:	True
Well:	NORTH PLATTE T34-P31-13HC	Survey Calculation Method:	Minimum Curvature
Wellbore:	ORIGINAL WELLBORE		
Design:	PROPOSAL #1		

Planned Survey

MD (usft)	Inc (°)	Azi (°)	TVD (usft)	SS (usft)	+N/-S (usft)	+E/-W (usft)	Vertical Section (usft)	Dogleg Rate (°/100usft)	Build Rate (°/100usft)	Turn Rate (°/100usft)
END OF TANGENT										
5,047.3	21.77	243.40	4,803.2	-189.39	-599.3	-1,196.9	-183.2	0.00	0.00	0.00
5,100.0	20.71	243.40	4,852.3	-238.54	-607.9	-1,214.0	-185.8	2.00	-2.00	0.00
5,200.0	18.71	243.40	4,946.5	-332.68	-623.0	-1,244.1	-190.4	2.00	-2.00	0.00
5,300.0	16.71	243.40	5,041.7	-427.94	-636.6	-1,271.3	-194.6	2.00	-2.00	0.00
5,400.0	14.71	243.40	5,138.0	-524.19	-648.7	-1,295.5	-198.3	2.00	-2.00	0.00
5,500.0	12.71	243.40	5,235.1	-621.34	-659.4	-1,316.7	-201.5	2.00	-2.00	0.00
5,600.0	10.71	243.40	5,333.1	-719.25	-668.5	-1,334.9	-204.3	2.00	-2.00	0.00
5,700.0	8.71	243.40	5,431.6	-817.81	-676.0	-1,350.0	-206.6	2.00	-2.00	0.00
5,800.0	6.71	243.40	5,530.7	-916.91	-682.0	-1,361.9	-208.4	2.00	-2.00	0.00
5,900.0	4.71	243.40	5,630.2	-1,016.40	-686.5	-1,370.8	-209.8	2.00	-2.00	0.00
6,000.0	2.71	243.40	5,730.0	-1,116.19	-689.4	-1,376.6	-210.7	2.00	-2.00	0.00
6,100.0	0.71	243.40	5,829.9	-1,216.14	-690.7	-1,379.3	-211.1	2.00	-2.00	0.00
EOD TO VERTICAL										
6,135.6	0.00	0.00	5,865.5	-1,251.70	-690.8	-1,379.5	-211.1	2.00	-2.00	0.00
KOP (12°/100ft BUR)										
6,165.6	0.00	0.00	5,895.5	-1,281.70	-690.8	-1,379.5	-211.1	0.00	0.00	0.00
6,200.0	4.13	359.46	5,929.9	-1,316.11	-689.6	-1,379.5	-209.9	12.00	12.00	0.00
6,300.0	16.13	359.46	6,028.2	-1,414.37	-672.0	-1,379.7	-193.2	12.00	12.00	0.00
6,400.0	28.13	359.46	6,120.6	-1,506.83	-634.4	-1,380.0	-157.5	12.00	12.00	0.00
6,500.0	40.13	359.46	6,203.3	-1,589.45	-578.4	-1,380.6	-104.3	12.00	12.00	0.00
6,600.0	52.13	359.46	6,272.4	-1,658.63	-506.4	-1,381.2	-35.9	12.00	12.00	0.00
6,700.0	64.13	359.46	6,325.1	-1,711.33	-421.7	-1,382.0	44.6	12.00	12.00	0.00
START OF TANGENT										
6,790.6	75.00	359.46	6,356.7	-1,742.90	-336.9	-1,382.8	125.1	12.00	12.00	0.00
6,800.0	75.00	359.46	6,359.1	-1,745.34	-327.8	-1,382.9	133.7	0.00	0.00	0.00
END OF TANGENT										
6,890.6	75.00	359.46	6,382.6	-1,768.78	-240.3	-1,383.7	216.8	0.00	0.00	0.00
6,900.0	76.13	359.46	6,384.9	-1,771.13	-231.2	-1,383.8	225.5	12.00	12.00	0.00
7,000.0	88.13	359.46	6,398.6	-1,784.79	-132.3	-1,384.8	319.5	12.00	12.00	0.00
7" ICP *NEW* - NORTH PLATTE T34-P31-13HC										
7,015.6	90.00	359.46	6,398.8	-1,785.05	-116.8	-1,384.9	334.2	12.00	12.00	0.00
7,100.0	90.00	359.46	6,398.8	-1,785.05	-32.3	-1,385.7	414.5	0.00	0.00	0.00
7,200.0	90.00	359.46	6,398.8	-1,785.05	67.7	-1,386.6	509.5	0.00	0.00	0.00
7,300.0	90.00	359.46	6,398.8	-1,785.05	167.7	-1,387.6	604.5	0.00	0.00	0.00
7,400.0	90.00	359.46	6,398.8	-1,785.05	267.7	-1,388.5	699.5	0.00	0.00	0.00
7,500.0	90.00	359.46	6,398.8	-1,785.05	367.6	-1,389.5	794.5	0.00	0.00	0.00
7,600.0	90.00	359.46	6,398.8	-1,785.05	467.6	-1,390.4	889.5	0.00	0.00	0.00
7,700.0	90.00	359.46	6,398.8	-1,785.05	567.6	-1,391.4	984.5	0.00	0.00	0.00
7,800.0	90.00	359.46	6,398.8	-1,785.05	667.6	-1,392.3	1,079.5	0.00	0.00	0.00
7,900.0	90.00	359.46	6,398.8	-1,785.04	767.6	-1,393.3	1,174.5	0.00	0.00	0.00
8,000.0	90.00	359.46	6,398.8	-1,785.04	867.6	-1,394.2	1,269.5	0.00	0.00	0.00
8,100.0	90.00	359.46	6,398.8	-1,785.04	967.6	-1,395.1	1,364.5	0.00	0.00	0.00
8,200.0	90.00	359.46	6,398.8	-1,785.04	1,067.6	-1,396.1	1,459.5	0.00	0.00	0.00
8,300.0	90.00	359.46	6,398.8	-1,785.04	1,167.6	-1,397.0	1,554.5	0.00	0.00	0.00
8,400.0	90.00	359.46	6,398.8	-1,785.04	1,267.6	-1,398.0	1,649.5	0.00	0.00	0.00
8,500.0	90.00	359.46	6,398.8	-1,785.04	1,367.6	-1,398.9	1,744.5	0.00	0.00	0.00
8,600.0	90.00	359.46	6,398.8	-1,785.04	1,467.6	-1,399.9	1,839.5	0.00	0.00	0.00
8,700.0	90.00	359.46	6,398.8	-1,785.04	1,567.6	-1,400.8	1,934.5	0.00	0.00	0.00
8,800.0	90.00	359.46	6,398.8	-1,785.04	1,667.6	-1,401.8	2,029.5	0.00	0.00	0.00
8,900.0	90.00	359.46	6,398.8	-1,785.04	1,767.6	-1,402.7	2,124.5	0.00	0.00	0.00
9,000.0	90.00	359.46	6,398.8	-1,785.04	1,867.6	-1,403.7	2,219.5	0.00	0.00	0.00
9,100.0	90.00	359.46	6,398.8	-1,785.04	1,967.6	-1,404.6	2,314.5	0.00	0.00	0.00

Database:	EDM 5000.1 Single User Db	Local Co-ordinate Reference:	Well NORTH PLATTE T34-P31-13HC
Company:	BONANZA CREEK ENERGY INC.	TVD Reference:	KB-EST @ 4613.8usft (Original Well Elev)
Project:	WELD COUNTY, COLORADO (NAD 83)	MD Reference:	KB-EST @ 4613.8usft (Original Well Elev)
Site:	SE SE SEC. 13 T5N R63W 6th P.M.	North Reference:	True
Well:	NORTH PLATTE T34-P31-13HC	Survey Calculation Method:	Minimum Curvature
Wellbore:	ORIGINAL WELLBORE		
Design:	PROPOSAL #1		

Planned Survey

MD (usft)	Inc (°)	Azi (°)	TVD (usft)	SS (usft)	+N/-S (usft)	+E/-W (usft)	Vertical Section (usft)	Dogleg Rate (°/100usft)	Build Rate (°/100usft)	Turn Rate (°/100usft)
9,200.0	90.00	359.46	6,398.8	-1,785.03	2,067.6	-1,405.6	2,409.5	0.00	0.00	0.00
9,300.0	90.00	359.46	6,398.8	-1,785.03	2,167.6	-1,406.5	2,504.5	0.00	0.00	0.00
9,400.0	90.00	359.46	6,398.8	-1,785.03	2,267.6	-1,407.5	2,599.5	0.00	0.00	0.00
9,500.0	90.00	359.46	6,398.8	-1,785.03	2,367.6	-1,408.4	2,694.5	0.00	0.00	0.00
9,600.0	90.00	359.46	6,398.8	-1,785.03	2,467.6	-1,409.4	2,789.5	0.00	0.00	0.00
9,700.0	90.00	359.46	6,398.8	-1,785.03	2,567.6	-1,410.3	2,884.5	0.00	0.00	0.00
9,800.0	90.00	359.46	6,398.8	-1,785.03	2,667.5	-1,411.3	2,979.5	0.00	0.00	0.00
9,900.0	90.00	359.46	6,398.8	-1,785.03	2,767.5	-1,412.2	3,074.5	0.00	0.00	0.00
10,000.0	90.00	359.45	6,398.8	-1,785.02	2,867.5	-1,413.2	3,169.5	0.00	0.00	0.00
10,100.0	90.00	359.45	6,398.8	-1,785.02	2,967.5	-1,414.1	3,264.5	0.00	0.00	0.00
10,200.0	90.00	359.45	6,398.8	-1,785.02	3,067.5	-1,415.1	3,359.5	0.00	0.00	0.00
10,300.0	90.00	359.45	6,398.8	-1,785.02	3,167.5	-1,416.0	3,454.5	0.00	0.00	0.00
10,400.0	90.00	359.45	6,398.8	-1,785.02	3,267.5	-1,417.0	3,549.5	0.00	0.00	0.00
10,500.0	90.00	359.45	6,398.8	-1,785.02	3,367.5	-1,417.9	3,644.5	0.00	0.00	0.00
10,600.0	90.00	359.45	6,398.8	-1,785.01	3,467.5	-1,418.9	3,739.5	0.00	0.00	0.00
10,700.0	90.00	359.45	6,398.8	-1,785.01	3,567.5	-1,419.8	3,834.5	0.00	0.00	0.00
10,800.0	90.00	359.45	6,398.8	-1,785.01	3,667.5	-1,420.8	3,929.5	0.00	0.00	0.00
10,900.0	90.00	359.45	6,398.8	-1,785.01	3,767.5	-1,421.7	4,024.5	0.00	0.00	0.00
11,000.0	90.00	359.45	6,398.8	-1,785.01	3,867.5	-1,422.7	4,119.5	0.00	0.00	0.00
11,100.0	90.00	359.45	6,398.8	-1,785.00	3,967.5	-1,423.7	4,214.5	0.00	0.00	0.00
11,200.0	90.00	359.45	6,398.8	-1,785.00	4,067.5	-1,424.6	4,309.5	0.00	0.00	0.00
11,300.0	90.00	359.45	6,398.8	-1,785.00	4,167.5	-1,425.6	4,404.5	0.00	0.00	0.00
BHL - NORTH PLATTE T34-P31-13HC										
11,336.7	90.00	359.45	6,398.8	-1,785.00	4,204.2	-1,425.9	4,439.4	0.00	0.00	0.00

Plan Annotations

MD (usft)	TVD (usft)	Local Coordinates		Comment
		+N/-S (usft)	+E/-W (usft)	
900.0	900.0	0.0	0.0	START NUDGE (2°/100ft BUR)
1,988.3	1,962.3	-91.5	-182.6	EOB TO 21.77° INC
5,047.3	4,803.2	-599.3	-1,196.9	END OF TANGENT
6,135.6	5,865.5	-690.8	-1,379.5	EOD TO VERTICAL
6,165.6	5,895.5	-690.8	-1,379.5	KOP (12°/100ft BUR)
6,790.6	6,356.7	-336.9	-1,382.8	START OF TANGENT
6,890.6	6,382.6	-240.3	-1,383.7	END OF TANGENT
7,015.6	6,398.8	-116.8	-1,384.9	7" ICP *NEW* - NORTH PLATTE T34-P31-13HC
11,336.7	6,398.8	4,204.2	-1,425.9	BHL - NORTH PLATTE T34-P31-13HC