

Caerus Oil and Gas LLC - EBUS

Puckett 11D-1

H&P 330

Post Job Summary

Cement Surface Casing

Date Prepared: 6/10/2015

Job Date: 6/07/2015

Submitted by: Patrick Ealey – Grand Junction Cement Engineer

The Road to Excellence Starts with Safety

Sold To #: 360446	Ship To #: 3624604	Quote #:	Sales Order #: 0902477844
Customer: CAERUS OIL AND GAS LLC - EBUS		Customer Rep: BOYD COTTAM	
Well Name: PUCKETT		Well #: 11D-1	API/UWI #: 05-045-22629-00
Field: WILDCAT	City (SAP): PARACHUTE	County/Parish: GARFIELD	State: COLORADO
Legal Description: 2-7S-97W-2186FNL-645FEL			
Contractor: H & P DRLG		Rig/Platform Name/Num: H & P 330	
Job BOM: 7521			
Well Type: DIRECTIONAL GAS			
Sales Person: HALAMERICA\HB80977		Srvc Supervisor: Carlton Kukus	
Job			

Formation Name	
Formation Depth (MD)	Top Bottom
Form Type	BHST
Job depth MD	2510ft
Water Depth	Job Depth TVD 2510ft
Perforation Depth (MD)	Wk Ht Above Floor 5ft
	From To

Well Data										
Description	New / Used	Size in	ID in	Weight lbm/ft	Thread	Grade	Top MD ft	Bottom MD ft	Top TVD ft	Bottom TVD ft
Casing	3	9.625	8.921	36	8 RD (LT&C)	J-55	0	2493	0	2493
Open Hole Section			14.75				0	2510	0	2510

Tools and Accessories									
Type	Size in	Qty	Make	Depth ft		Type	Size in	Qty	Make
Guide Shoe	9.625			2493		Top Plug	9.625	1	HES
Float Shoe	9.625					Bottom Plug	9.625		HES
Float Collar	9.625			2449		SSR plug set	9.625		HES
Insert Float	9.625					Plug Container	9.625	1	HES
Stage Tool	9.625					Centralizers	9.625		HES

Miscellaneous Materials											
Gelling Agt		Conc		Surfactant		Conc		Acid Type		Qty	Conc
Treatment Fld		Conc		Inhibitor		Conc		Sand Type		Size	Qty

Fluid Data

Stage/Plug #: 1										
Fluid #	Stage Type	Fluid Name	Qty	Qty UoM	Mixing Density lbm/gal	Yield ft3/sack	Mix Fluid Gal	Rate bbl/min	Total Mix Fluid Gal	
1	Fresh Water	Fresh Water	10	bbl	8.34			4		
Fluid #	Stage Type	Fluid Name	Qty	Qty UoM	Mixing Density lbm/gal	Yield ft3/sack	Mix Fluid Gal	Rate bbl/min	Total Mix Fluid Gal	
2	Super Flush 101	Super Flush 101	20	bbl	10			4		

21 gal/bbl		FRESH WATER							
Fluid #	Stage Type	Fluid Name	Qty	Qty UoM	Mixing Density lbm/gal	Yield ft3/sack	Mix Fluid Gal	Rate bbl/min	Total Mix Fluid Gal
3	Fresh Water	Fresh Water	10	bbl	8.34			2	
Fluid #	Stage Type	Fluid Name	Qty	Qty UoM	Mixing Density lbm/gal	Yield ft3/sack	Mix Fluid Gal	Rate bbl/min	Total Mix Fluid Gal
4	Lead Cement	VARICEM (TM) CEMENT	375	sack	11	3.65	23.08	6	
23.08 Gal		FRESH WATER							
Fluid #	Stage Type	Fluid Name	Qty	Qty UoM	Mixing Density lbm/gal	Yield ft3/sack	Mix Fluid Gal	Rate bbl/min	Total Mix Fluid Gal
5	Tail Cement	VARICEM (TM) CEMENT	160	sack	12.8	2.18	12.11	6	
12.11 Gal		FRESH WATER							
Fluid #	Stage Type	Fluid Name	Qty	Qty UoM	Mixing Density lbm/gal	Yield ft3/sack	Mix Fluid Gal	Rate bbl/min	Total Mix Fluid Gal
6	Displacement	Displacement	161.5	bbl	8.34			6	
Fluid #	Stage Type	Fluid Name	Qty	Qty UoM	Mixing Density lbm/gal	Yield ft3/sack	Mix Fluid Gal	Rate bbl/min	Total Mix Fluid Gal
7	ReverCem	REVERCEM (TM) CEMENT	238	sack	12.8	2.12	11.15	1.7	
11.15 Gal		FRESH WATER							
Cement Left In Pipe	Amount	44 ft			Reason	Shoe Joint			
Comment									

1.0 Real-Time Job Summary

1.1 Job Event Log

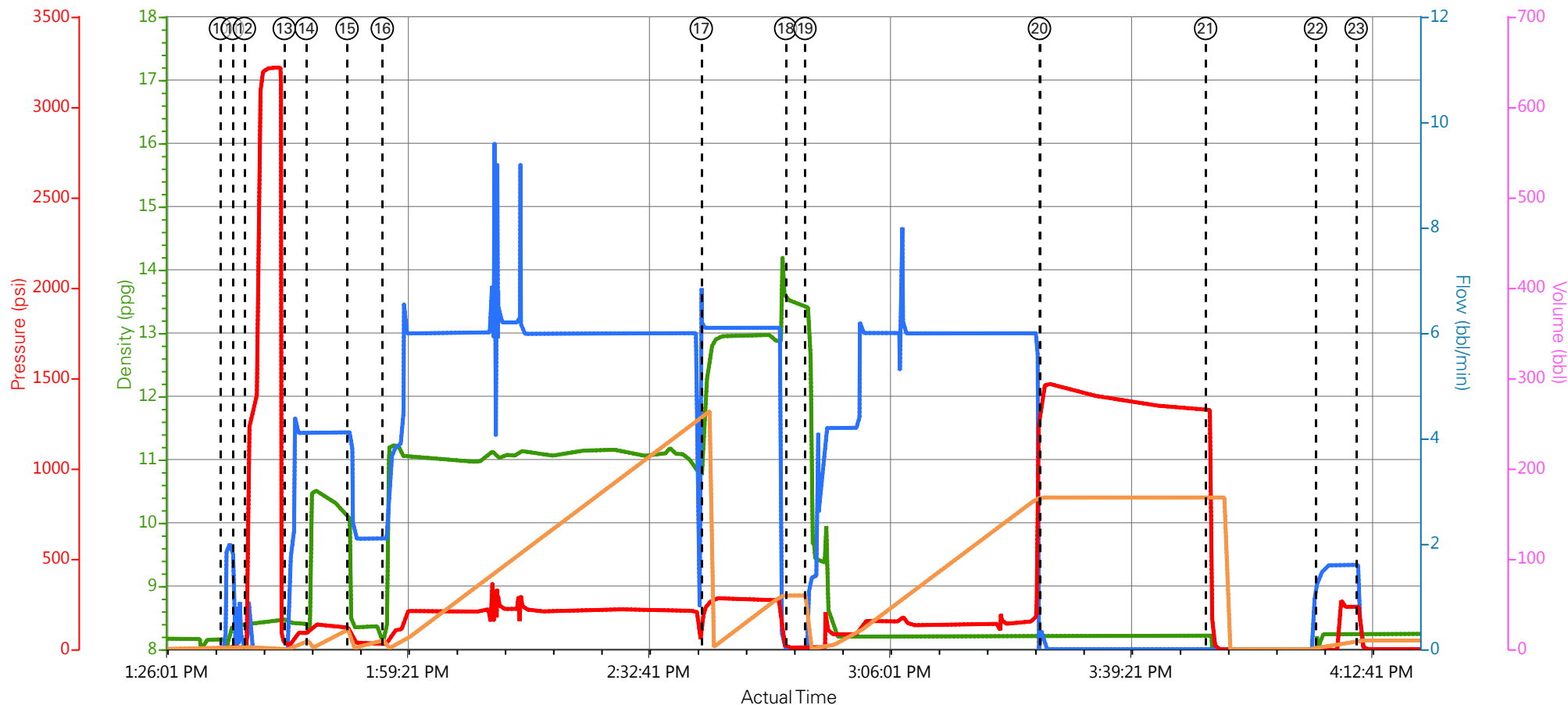
Type	Seq. No.	Activity	Date	Time	Source	DH Density (ppg)	Comb Pump Rate (bbl/min)	PS Pump Press (psi)	Pump Stg Tot (bbl)	Comments
Event	1	Call Out	6/7/2015	05:00:00	USER					ALL HES CALLED OUT
Event	2	Pre-Convoy Safety Meeting	6/7/2015	08:00:00	USER					JOURANY CREATED ALL HES PRESENT
Event	3	Crew Leave Yard	6/7/2015	08:15:00	USER					1-550 PICKUP, 1-ELITE PUMPING TRUCK, 2- 660 BULK TRUCKS, 1-TRANSPORT TRUCK.
Event	4	Arrive At Loc	6/7/2015	11:00:00	USER					HES ARRIVED ON TIME.
Event	5	Assessment Of Location Safety Meeting	6/7/2015	11:15:00	USER					RIG WAS RUNNING CASING, HES SPOKE WITH COMPANY REP AND SPOTTED UNITS.
Event	6	Pre-Rig Up Safety Meeting	6/7/2015	11:30:00	USER					JSA REVIEWED ALL HES PRESENT
Event	7	Rig-Up Equipment	6/7/2015	11:45:00	USER					RIG UP IRON TO THE FLOOR, WATER HOSES TO RIG TANK, BULK HOSES TO ELITE TRUCK.
Event	8	Rig-Up Completed	6/7/2015	12:45:00	USER					COMPLETED
Event	9	Pre-Job Safety Meeting	6/7/2015	13:00:00	USER					ALL HES AND RIG CREWS AND COMPANY MAN PRESENT
Event	10	Start Job	6/7/2015	13:33:55	COM7					TD: 2510FT, TP: 2493FT, SJ 43.98FT, OH: 14.750, CASING: 9.625, MUD: 9 PPG, PARASITE LINE: 2410FT,
Event	11	Prime Pumps	6/7/2015	13:35:35	COM7	8.34	2	43	2.0	FILL LINES TO PRESSURE TEST
Event	12	Test Lines	6/7/2015	13:37:13	COM7	8.34	0.00	3015	2	PRESSURE TEST 3000PSI
Event	13	Pump Spacer 1	6/7/2015	13:42:44	COM7	8.34	4	94	10	10 BBLS OF FRESH WATER

Event	14	Pump Spacer 1	6/7/2015	13:45:46	COM7	8.5	4	151	20	20 BBLS OF SUPER FLUSH
Event	15	Pump Spacer 1	6/7/2015	13:51:25	COM7	8.34	2	30	10	10 BBLS OF FRESH WATER
Event	16	Pump Lead Cement	6/7/2015	13:56:17	USER	11	6	270	244	375 SACKS OF VARICEM CEMENT 11PPG 3.65YEILD 23.08GAL/SK, WAIT OF CEMENT VERIFIED VIA OF MUD SCALES THROUGH OUT LEAD CEMENT
Event	17	Pump Tail Cement	6/7/2015	14:40:24	COM7	12.8	6	275	63	160 SACKS OF VARICEM CEMENT 12.8PPG 2.18YEILD 12.11GAL/SK, WAIT OF CEMENT VERIFIED VIA OF MUD SCALES THROUGH OUT TAIL CEMENT
Event	18	Drop Top Plug	6/7/2015	14:52:04	COM7					PLUG AWAY WITH NO PROBLEMS
Event	19	Pump Displacement	6/7/2015	14:54:44	COM7	8.34	6	260	161.5	FRESH WATER DISPLACEMENT
Event	20	Bump Plug	6/7/2015	15:27:10	USER	8.34	6	270	161.5	HES BUMPED PLUG 25BBLS BEFORE CALCULATED, HES SPOKE WITH COMPANY REP TO DISCUSS, COMPANY REP DECIDED TO CHECK FLOATS AND PUMP THROUGH PARASITE LINE, BUMP PLUG 150 TOOK TO 1460
Event	21	Check Floats	6/7/2015	15:50:08	USER	8.34	0.00	1464	0	CHECK FLOATS RELASED PRESSURE AT 1330, GOT ONE AND A HALF BBLS BACK TO TANKS
Event	22	Other	6/7/2015	16:05:20	USER					PUMP 10BBLS OF SUGAR WTER THROUGH PARASITE LINE, PARASITE LINE IS CLEAR AT 5.5 BBLS WE CAUGHT PRESSURE, AND PRESSURE TO UP 291 PSI
Event	23	Shutdown	6/7/2015	16:10:57	USER					SHUTDOWN, PUMPED 10BBLS OF SUGAR WATER DOWN PARASITE LINE AT COMPANY REP REQUEST
Event	24	Start Job	6/7/2015	19:48:18	COM7					START TOPOUT JOB
Event	25	Pump Tail Cement	6/7/2015	19:52:38	USER	12.8	1.7	15	90	238 SACKS OF REVERCEM CEMENT 12.8PPG 2.12YEILD 11.15GAL/SK, WAIT OF CEMENT VERIFIED VIA OF MUD SCALES TROUGHT OUT TOPOUT CEMENT

Event	26	Shutdown	6/7/2015	20:45:38	USER	SHUTDOWN CEMENT TO SURFACE. 238SKS (90BBLS) OF REVERCEM CEMENT PUMPED. 12BBLS SUPERFLUSH 101 USED TROUGHOUT TOPOUT.
Event	27	Other	6/7/2015	21:20:43	USER	PRIOR TO STARTING THE CEMENT JOB THE HES SUPERVISOR SPOKE WITH THE COMPANY REP ABOUT THE HOLE DEPTH AND THE TOTAL CASING THAT WAS RAN INTO THE HOLE, THE NUMBERS THAT THE HES SUPERVISOR WERE AS FOLLOWS: 2510FT AND TOTAL CASING WAS 2493FT WITH A SHOE JOINT 43.98FT PUTTING THE FLOAT COLLAR AT 2449FT. THE HES SUPERVISOR FIGURED THE JOB OFF OF THOSE FIGURES COMING UP WITH A TOTAL DISPLACEMENT TO THE FLOAT COLLAR OF 189.3BBLS OF FRESH WATER, WHILE HES WAS PUMPING DISPLACEMENT THEY LANDED THE PLUG
Event	28	Other	6/7/2015	21:26:57	USER	25BBLS EARLY MEANING THE POTENTIAL OF 360FT OF CEMENT BEING LEFT INSIDE THE CASING, HES DISCUSSED THE ISSUE WITH THE COMPANY REP, THE COMPANY REP DECIDED TO CHECK THE FLOATS AND TO SEE IF THEY WERE HOLDING, HES CHECKED THE FLOATS AND 1.5BBLS FLOWED BACK TO THE TANKS MEANING THE FLOATS HELD, HES WAITED 4 HOURS BEFORE BEGINNING TOP OUT, WHILE WAITING THE 4 HOURS THE COMPANY REP APPROCHED THE HES CEMENT SUPERVISOR AND TOLD HIM THAT HE FIGURED OUT WHY THE PLUG BUMPED 25 BBLS EARLY, THE REASONING
Event	29	Other	6/7/2015	21:31:44	USER	WAS THAT THE COMPANY REP. HAD GONE OFF OF THE WRONG PIPE TALLY AND THAT THERE WAS CONFUSION AND THE END RESULT WAS THAT APPROX. 360FT OF 9.625 36# J-55 CASING, AND THAT THE FLOAT COLLAR WAS HIGHER THEN WAS THOUGHT AND THAT IS WHY THE PLUG LANDED 25 BBLS EARLY.

Event	30	Pre-Rig Down Safety Meeting	6/7/2015	21:52:39	USER	JSA REVIEWD ALL HES INVOLVED
Event	31	Rig-Down Equipment	6/7/2015	21:53:32	USER	WASH UP BLOW DOWN PUMP TRUCK, RIG DOWN LIINES AND BULK LINES
Event	32	Rig-Down Completed	6/7/2015	22:54:00	USER	COMPLETED
Event	33	Pre-Convoy Safety Meeting	6/7/2015	23:05:00	USER	JOURANY CREATED ALL HES INVOLVED
Event	34	Crew Leave Location	6/7/2015	23:15:00	USER	1-550PICKUP, 1-ELITE PUMP TRUCK, 2-660 BULK TRUCKS, 1-TRANSPORT TRUCK. THANK YOU FOR CHOOSING HALLIBURTON CEMENT KEVIN BENNETT AND CREW

CAERUS/PUCKETT 11D-1/9.625 SURFACE



— DH Density (ppg)
 — Comb Pump Rate (bbl/min)
 — PS Pump Press (psi)
 — Pump Stg Tot (bbl)

① Call Out n/a;n/a;n/a;n/a	⑩ Start Job 8.16;0;-3;0	⑲ Pump Displacement 13.41;0.5;15;0	28 Other n/a;n/a;n/a;n/a
② Pre-Convoy Safety Meeting n/a;n/a;n/a;n/a	⑪ Prime Pumps 8.38;0;5;2	20 Bump Plug 8.24;0;1428;167.9	29 Other n/a;n/a;n/a;n/a
③ Crew Leave Yard n/a;n/a;n/a;n/a	⑫ Test Lines 8.4;0;8;2.3	21 Check Floats 8.2;0;1329;167.9	30 Pre-Rig Down Safety Meeting n/a;n/a;n/a;n/a
④ Arrive At Loc n/a;n/a;n/a;n/a	⑬ Fresh Water Spacer 8.46;0;15;0	22 Other 7.94;1.4;-2;0.9	31 Rig-Down Equipment n/a;n/a;n/a;n/a
⑤ Assessment Of Location Safety Meeting n/a;n/a;n/a;n/a	⑭ Super Flush 8.33;4.1;88;10.3	23 Shutdown 8.24;0.6;185;9.7	32 Rig-Down Completed n/a;n/a;n/a;n/a
⑥ Pre-Rig Up Safety Meeting n/a;n/a;n/a;n/a	⑮ Fresh Water Spacer 8.88;4.1;114;0	24 Start Job 8.18;0;1;0	33 Pre-Convoy Safety Meeting n/a;n/a;n/a;n/a
⑦ Rig-Up Equipment n/a;n/a;n/a;n/a	⑯ Pump Lead Cement 8.25;2.1;29;0.1	25 Pump Cement 8;1.2;-4;0.1	34 Crew Leave Location n/a;n/a;n/a;n/a
⑧ Rig-Up Completed 8.18;0;-6;0	⑰ Pump Tail Cement 11.7;6.1;220;259.5	26 Shutdown 12.9;1.7;11;90.3	
⑨ Pre-Job Safety Meeting 8.17;0;-1;0	⑱ Drop Top Plug 13.51;0;8;59.5	27 Other n/a;n/a;n/a;n/a	

▼ **HALLIBURTON** | iCem® Service

Created: 2015-06-07 12:14:43, Version: 4.1.107

Edit

Customer: CAERUS OIL AND GAS LLC - EBUS

Job Date: 6/7/2015 12:22:01 PM

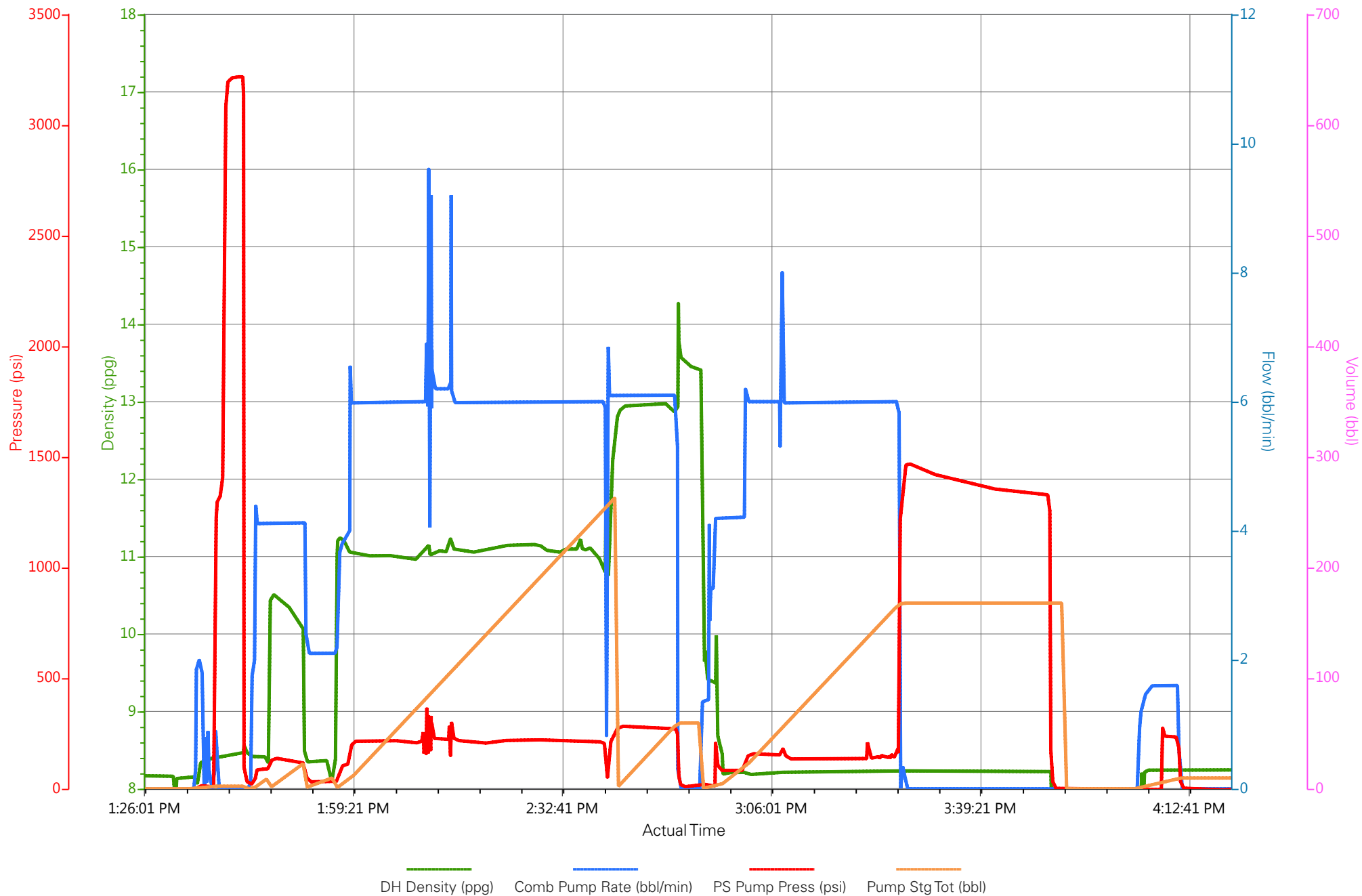
Well: Puckett 11D-1

Representative: Boyd Cottam

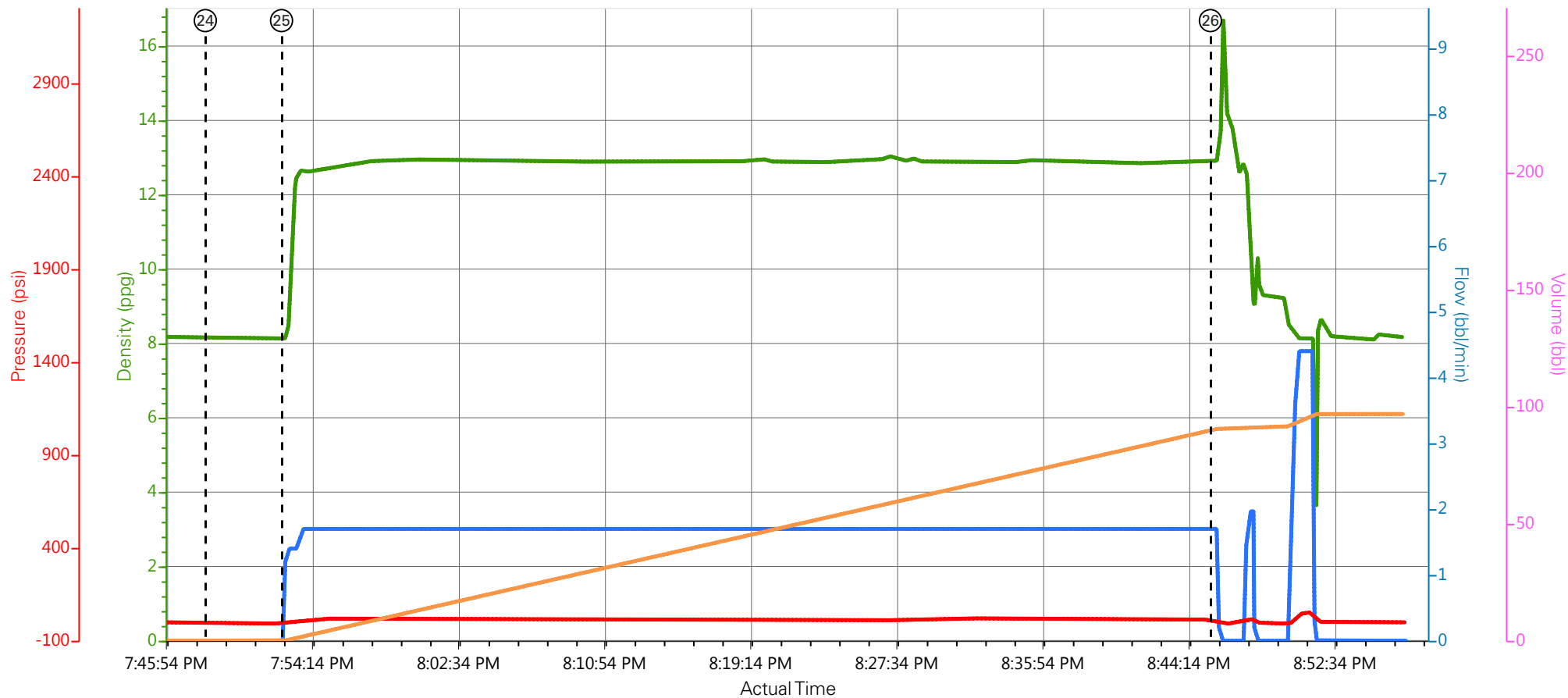
Sales Order #: 902477844

Supervisor/Operator: Kevin Bennett/Wes Gowen/Carl Kukus
E-8

CAERUS/PUCKETT 11D-1/9.625 SURFACE



CAERUS/PUCKETT 11D-1/9.625 SURFACE



— DH Density (ppg)
 — Comb Pump Rate (bbl/min)
 — PS Pump Press (psi)
 — Pump Stg Tot (bbl)

① Call Out n/a;n/a;n/a;n/a	⑩ Start Job 8.16;0;-3;0	⑲ Pump Displacement 13.41;0.5;15;0	28 Other n/a;n/a;n/a;n/a
② Pre-Convoy Safety Meeting n/a;n/a;n/a;n/a	⑪ Prime Pumps 8.38;0;5;2	20 Bump Plug 8.24;0;1428;167.9	29 Other n/a;n/a;n/a;n/a
③ Crew Leave Yard n/a;n/a;n/a;n/a	⑫ Test Lines 8.4;0;8;2.3	21 Check Floats 8.2;0;1329;167.9	30 Pre-Rig Down Safety Meeting n/a;n/a;n/a;n/a
④ Arrive At Loc n/a;n/a;n/a;n/a	⑬ Fresh Water Spacer 8.46;0;15;0	22 Other 7.94;1.4;-2;0.9	31 Rig-Down Equipment n/a;n/a;n/a;n/a
⑤ Assessment Of Location Safety Meeting n/a;n/a;n/a;n/a	⑭ Super Flush 8.33;4.1;88;10.3	23 Shutdown 8.24;0.6;185;9.7	32 Rig-Down Completed n/a;n/a;n/a;n/a
⑥ Pre-Rig Up Safety Meeting n/a;n/a;n/a;n/a	⑮ Fresh Water Spacer 8.88;4.1;114;0	24 Start Job 8.18;0;1;0	33 Pre-Convoy Safety Meeting n/a;n/a;n/a;n/a
⑦ Rig-Up Equipment n/a;n/a;n/a;n/a	⑯ Pump Lead Cement 8.25;2.1;29;0.1	25 Pump Cement 8;1.2;-4;0.1	34 Crew Leave Location n/a;n/a;n/a;n/a
⑧ Rig-Up Completed 8.18;0;-6;0	⑰ Pump Tail Cement 11.7;6.1;220;259.5	26 Shutdown 12.9;1.7;11;90.3	
⑨ Pre-Job Safety Meeting 8.17;0;-1;0	⑱ Drop Top Plug 13.51;0;8;59.5	27 Other n/a;n/a;n/a;n/a	

▼ **HALLIBURTON** | iCem® Service

Created: 2015-06-07 12:14:43, Version: 4.1.107

Edit

Customer : CAERUS OIL AND GAS LLC - EBUS

Job Date : 6/7/2015 12:22:01 PM

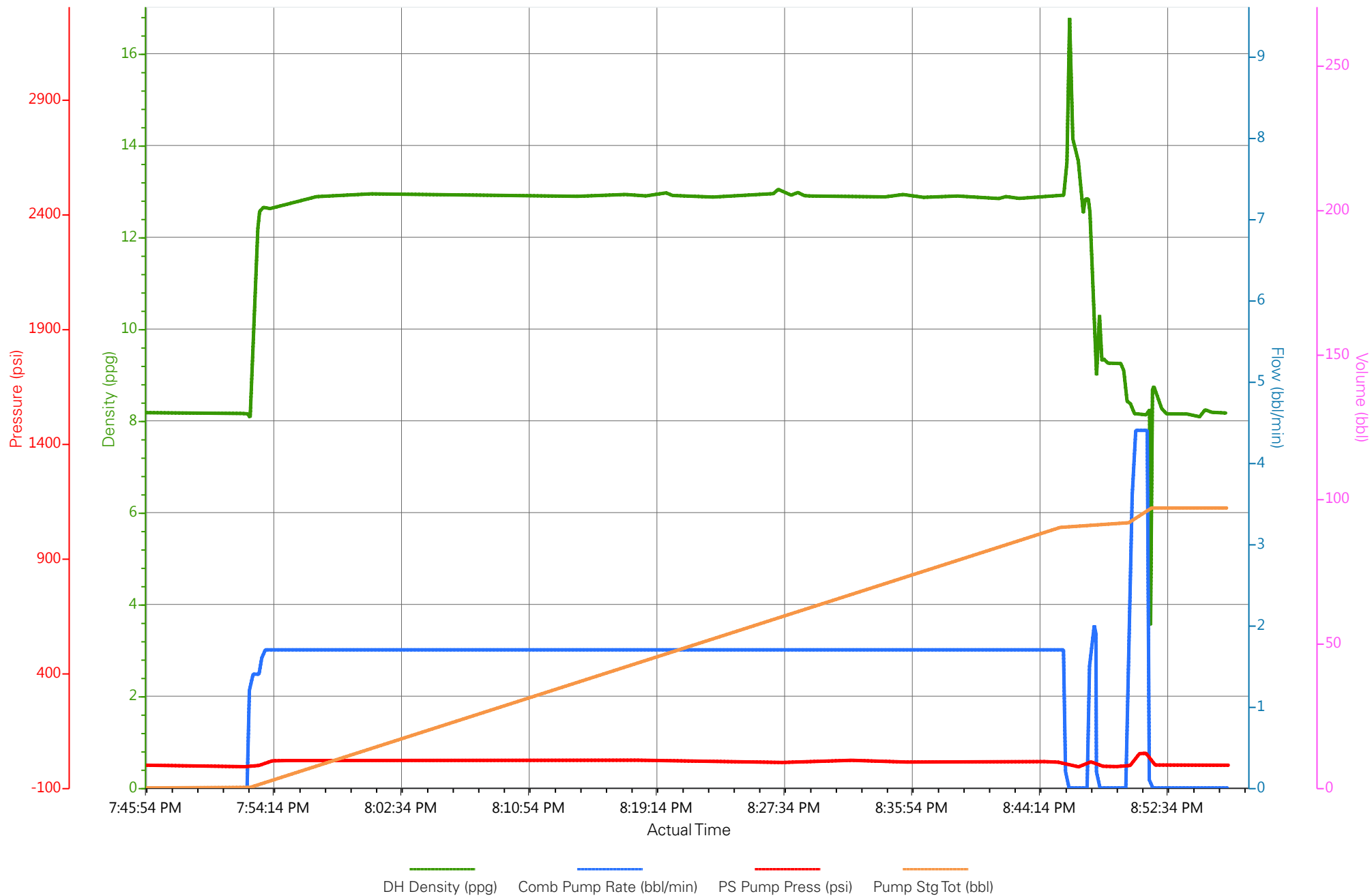
Well : Puckett 11D-1

Representative : Boyd Cottam

Sales Order # : 902477844

Supervisor/Operator : Kevin Bennett/Wes Gowen/Carl Kukus
E-8

CAERUS/PUCKETT 11D-1/9.625 SURFACE



HALLIBURTON

Water Analysis Report

Company: WPX
Submitted by: Carl Kukus
Attention: J.Trout
Lease: PUCKETT
Well #: 11D-1

Date: 6/7/2015
Date Rec.: 6/7/2015
S.O.#: 902477844
Job Type: Surface

Specific Gravity	<i>MAX</i>	1
pH	<i>8</i>	7
Potassium (K)	<i>5000</i>	200 Mg / L
Calcium (Ca)	<i>500</i>	120 Mg / L
Iron (FE2)	<i>300</i>	0 Mg / L
Chlorides (Cl)	<i>3000</i>	0 Mg / L
Sulfates (SO ₄)	<i>1500</i>	200 Mg / L
Chlorine (Cl ₂)		0 Mg / L
Temp	<i>40-80</i>	50 Deg
Total Dissolved Solids		380 Mg / L

Respectfully: Carl Kukus

Title: CEMENTING SUPERVISOR

Location: Grand Junction, CO

NOTICE:

This report is limited to the described sample tested. Any person using or relying on this report agrees that Halliburton shall not be liable for any loss or damage whether due to act or omission resulting from such report or its use.