

Caerus Oil and Gas LLC - EBUS

Puckett 43A-2

H&P 330

Post Job Summary

Cement Surface Casing

Date Prepared: 4/29/2015

Job Date: 4/8/2015

Submitted by: Patrick Ealey – Grand Junction Cement Engineer

The Road to Excellence Starts with Safety

Sold To #: 360446	Ship To #: 3623376	Quote #: 0022030610	Sales Order #: 0902303533
Customer: CAERUS OIL AND GAS LLC - EBUS		Customer Rep: R. BOYD COTTAM	
Well Name: PUCKETT		Well #: 43A-2	API/UWI #: 05-045-22635-00
Field: WILDCAT	City (SAP): PARACHUTE	County/Parish: GARFIELD	State: COLORADO
Legal Description: 2-7S-97W-2219FNL-641FEL			
Contractor: H & P DRLG		Rig/Platform Name/Num: H & P 330	
Job BOM: 7521			
Well Type: DIRECTIONAL GAS			
Sales Person: HALAMERICA\HB80977		Srvc Supervisor: Dustin Hyde	
Job			

Formation Name	
Formation Depth (MD)	Top Bottom
Form Type	BHST
Job depth MD	2500ft Job Depth TVD 2500ft
Water Depth	Wk Ht Above Floor
Perforation Depth (MD)	From To

Well Data										
Description	New / Used	Size in	ID in	Weight lbm/ft	Thread	Grade	Top MD ft	Bottom MD ft	Top TVD ft	Bottom TVD ft
Casing		9.625	8.921	36			0	2500		
Open Hole Section			14.75				0	2550		0

Tools and Accessories									
Type	Size in	Qty	Make	Depth ft		Type	Size in	Qty	Make
Guide Shoe	9.625	1		2500		Top Plug	9.625	1	HES
Float Shoe	9.625	1		44		Bottom Plug			
Float Collar	9.625	1		2455		SSR plug set			
Insert Float	9.625	1				Plug Container	9.625	1	HES
Stage Tool	9.625	1				Centralizers	9.625		

Miscellaneous Materials											
Gelling Agt		Conc		Surfactant		Conc		Acid Type		Qty	Conc
Treatment Fld		Conc		Inhibitor		Conc		Sand Type		Size	Qty

Fluid Data

Stage/Plug #: 1

Fluid #	Stage Type	Fluid Name	Qty	Qty UoM	Mixing Density lbm/gal	Yield ft3/sack	Mix Fluid Gal	Rate bbl/min	Total Mix Fluid Gal
1	Fresh Water	Fresh Water	10	bbl	8.34			4	

Fluid #	Stage Type	Fluid Name	Qty	Qty UoM	Mixing Density lbm/gal	Yield ft3/sack	Mix Fluid Gal	Rate bbl/min	Total Mix Fluid Gal
---------	------------	------------	-----	---------	------------------------	----------------	---------------	--------------	---------------------

2	Lead Cement	VARICEM (TM) CEMENT	320	sack	12.3	2.45		8	14.12
14.12 Gal		FRESH WATER							
Fluid #	Stage Type	Fluid Name	Qty	Qty UoM	Mixing Density lbm/gal	Yield ft3/sack	Mix Fluid Gal	Rate bbl/min	Total Mix Fluid Gal
3	Tail Cement	VARICEM (TM) CEMENT	610	sack	12.8	2.18		8	12.11
12.11 Gal		FRESH WATER							
Fluid #	Stage Type	Fluid Name	Qty	Qty UoM	Mixing Density lbm/gal	Yield ft3/sack	Mix Fluid Gal	Rate bbl/min	Total Mix Fluid Gal
4	Displacement	Displacement	190	bbl	8.34			9	
Fluid #	Stage Type	Fluid Name	Qty	Qty UoM	Mixing Density lbm/gal	Yield ft3/sack	Mix Fluid Gal	Rate bbl/min	Total Mix Fluid Gal
5	Super Flush 100	Super Flush 100	5	bbl	10.01			4	
1000 gal/Mgal		FRESH WATER							
Fluid #	Stage Type	Fluid Name	Qty	Qty UoM	Mixing Density lbm/gal	Yield ft3/sack	Mix Fluid Gal	Rate bbl/min	Total Mix Fluid Gal
6	12.8# Annular Fill	PLUGCEM (TM) SYSTEM	120	sack	12.8	2.12		4	11.15
11.15 Gal		FRESH WATER							
Cement Left In Pipe		Amount	44 ft		Reason		Shoe Joint		
Comment									

1.0 Real-Time Job Summary

1.1 Job Event Log

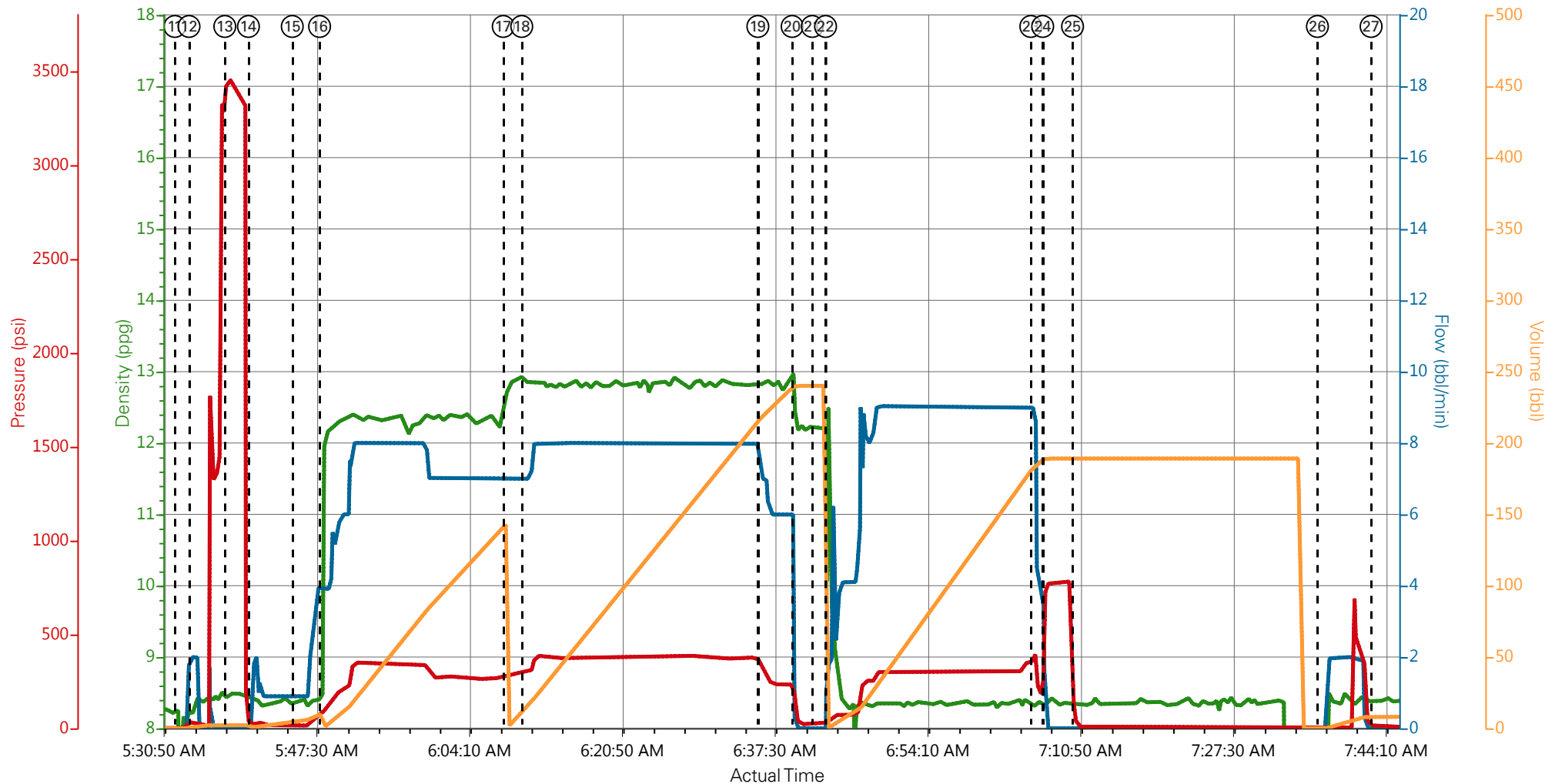
Type	Seq. No.	Activity	Graph Label	Date	Time	Source	DH Density <i>(ppg)</i>	Comb Pump Rate <i>(bbl/min)</i>	PS Pump Press <i>(psi)</i>	Pump Stg Tot <i>(bbl)</i>	Comments
Event	1	Call Out	Call Out	4/7/2015	22:00:00	USER					CREW CALLED OUT FOR JOB ON LOCATION 0400
Event	2	Pre-Convoy Safety Meeting	Pre-Convoy Safety Meeting	4/7/2015	23:45:00	USER					ALL HES EMPLOYEES PRESENT
Event	3	Crew Leave Yard	Crew Arrive Yard	4/8/2015	00:00:00	USER					1 HT 400 PUMP TRUCK E3, 2 660 BULK TRUCKS, 1 TRANSPORT, 1 550 SERVICE PICKUP
Event	4	Arrive At Loc	Arrive At Loc	4/8/2015	02:30:00	USER					RIG RUNNING CSG UPON HES ARRIVAL
Event	5	Assessment Of Location Safety Meeting	Assessment Of Location Safety Meeting	4/8/2015	02:45:00	USER					PERFORMED JSA AND WATER TEST
Event	6	Other	Spot Equipment	4/8/2015	03:00:00	USER					1 HT 400 PUMP TRUCK E3, 2 660 BULK TRUCKS, 1 TRANSPORT, 1 550 SERVICE PICKUP
Event	7	Pre-Rig Up Safety Meeting	Pre-Rig Up Safety Meeting	4/8/2015	03:15:00	USER					ALL HES EMPLOYEES PRESENT
Event	8	Rig-Up Equipment	Rig-Up Equipment	4/8/2015	03:30:00	USER					1 HT 400 PUMP TRUCK E3, 2 660 BULK TRUCKS, 1 TRANSPORT, 1 550 SERVICE PICKUP
Event	9	Rig-Up Completed	Rig-Up Completed	4/8/2015	05:00:00	USER					
Event	10	Pre-Job Safety Meeting	Pre-Job Safety Meeting	4/8/2015	05:10:00	USER					ALL HES EMPLOYEES AND RIG CREW ATTENDED

Event	11	Start Job	Start Job	4/8/2015	05:32:21	COM8						TD 2550', TP 2500.21', SJ 43.31', OH 14 3/4", CSG 9 5/8" 36# J-55, WF / WT 8.9
Event	12	Prime Pumps	Prime Lines	4/8/2015	05:33:53	USER	8.33	2.0	38	2.0		PRIME LINES WITH H2O
Event	13	Test Lines	Test Lines	4/8/2015	05:37:48	COM8					3430	PRESSURE TEST TO 3430 PSI
Event	14	Pump Spacer 1	Pump H2O Spacer	4/8/2015	05:40:22	COM8	8.33	4.0	80	10		FRESH WATER
Event	15	Check Weight	Check weight	4/8/2015	05:45:09	COM8						RECIRC DENSITY MATCHED MUD CUP SAMPLE WEIGHT
Event	16	Pump Lead Cement	Pump Lead Cement	4/8/2015	05:48:08	COM8	12.3	8.0	350	140		320 SKS OF VARICEM CMT, 12.3 PPG, 2.45 YIELD, 14.12 GAL / SK , NO RETURNS
Event	17	Pump Tail Cement	Pump Tail Cement	4/8/2015	06:08:10	COM8	12.8	8.0	430	237		610 SKS OF VARICEM CMT, 12.8 PPG, 2.18 YIELD, 12.11 GAL / SK , NO RETURNS
Event	18	Check Weight	Check weight	4/8/2015	06:10:11	COM8						RECIRC DENSITY MATCHED MUD CUP SAMPLE WEIGHT
Event	19	Slow Rate	Slow Rate	4/8/2015	06:35:57	USER						COMING TO END OF CMT
Event	20	Shutdown	Shutdown	4/8/2015	06:39:41	USER						SHUT DOWN END CEMENT / NO RETURNS / READY TUB TO WASH UP ON TOP OF PLUG
Event	21	Drop Top Plug	Drop Top Plug	4/8/2015	06:41:53	USER						DROP PLUG / PLUG AWAY
Event	22	Pump Displacement	Pump Displacement	4/8/2015	06:43:20	COM8	8.33	9.0	380	180		PUMP H2O DISPLACEMENT
Event	23	Slow Rate	Slow Rate	4/8/2015	07:05:44	USER	8.33	4.0	330	10		SLOWED TO BUMP PLUG

Event	24	Bump Plug	Bump Plug	4/8/2015	07:07:01	COM8	8.33	4.0	230	190	PLUG BUMPED, NO RETURNS
Event	25	Check Floats	Check Floats	4/8/2015	07:10:17	USER			780		FLOATS HELD, 1 BBL FLOW BACK
Event	26	Post-Job Safety Meeting (Pre Rig-Down)	Post-Job Safety Meeting (Pre Rig-Down)	4/8/2015	07:11:48	USER					RIGGED DOWN FLOOR AND RIGGED UP TO CELLUR TO PUMP DOWN PARASITE LINE
Event	27	Pump Spacer 2	Pump Sugar Water	4/8/2015	07:37:00	COM8	8.33	2.0	500	8	PUMPED 8 BBLS SUGAR WATER PER CO REP DOWN PARASITE LINE, 600 PSI
Event	28	Rig-Up Equipment	Rig-Up Equipment	4/8/2015	07:42:51	USER					RIGGED DOWN FROM PARASITE LINE AND RIGGED UP SUPERFLUSH INTO CELLUR AND IRON FOR TOPOUT
Event	29	End Job	End Job	4/8/2015	07:44:59	USER					COMPANY MAN WANTS TO HAVE MEETING IN DOG HOUSE AT 12:00
Event	30	Pre-Job Safety Meeting	Pre-Job Safety Meeting	4/8/2015	12:01:31	USER					WENT OVER TOPOUT WITH RIG CREW HES IS GOING TO WAIT UNTIL RIG IS DONE PRESSURE TESTING BOP
Event	31	Start Job	Start Job	4/8/2015	13:39:51	COM8					START TOPOUT
Event	32	Prime Pumps	Prime Lines	4/8/2015	13:40:59	USER	8.33	2.0	0	1	1 BBL H2O AHEAD
Event	33	Pump Cement	Pump Cement	4/8/2015	13:46:37	COM8	12.8	2.0	65	44	120 SKS PLUGCEM, 12.8 PPG, 2.12 YIELD, 11.15 GAL / SK, 5 BBLS SUPERFLUSH 100

Event	34	Shutdown	Shutdown	4/8/2015	14:08:38	USER	8 BBLS OF CMT TO SURFACE NO WATER
Event	35	End Job	End Job	4/8/2015	14:09:30	USER	USED 40 LBS SUGAR WASHED UP INTO CELLUR
Event	36	Post-Job Safety Meeting (Pre Rig-Down)	Post-Job Safety Meeting (Pre Rig-Down)	4/8/2015	14:30:00	USER	ALL HES EMPLOYEES ATTENDED
Event	37	Rig-Down Equipment	Rig-Down Equipment	4/8/2015	14:45:00	USER	1 HT 400 PUMP TRUCK E3, 2 660 BULK TRUCKS, 1 TRANSPORT, 1 550 SERVICE PICKUP
Event	38	Rig-Down Completed	Rig-Down Completed	4/8/2015	16:00:00	USER	NO INJURIES TO REPORT
Event	39	Pre-Convoy Safety Meeting	Pre-Convoy Safety Meeting	4/8/2015	16:30:00	USER	ALL HES EMPLOYEES ATTENDED
Event	40	Crew Leave Location	Crew Leave Location	4/8/2015	17:00:00	USER	THAN YOU FOR USING HALLIBURTON CMT

CAERUS PUCKETT 43A-2 9 5/8" SURFACE



— DH Density (ppg)
 — Comb Pump Rate (bbl/min)
 — PS Pump Press (psi)
 — Pump Stg Tot (bbl)

① Call Out	⑥ Spot Equipment	⑪ Start Job	⑯ Pump Lead Cement	21 Drop Top Plug	26 Pump Sugar Water	31 Pre-C
② Pre-Convoy Safety Meeting	⑦ Pre-Rig Up Safety Meeting	⑫ Prime Lines	⑰ Pump Tail Cement	22 Pump Displacement	27 End Job	32 Crew
③ Crew Arrive Yard	⑧ Rig-Up Equipment	⑬ Test Lines	⑱ Check weight	23 Slow Rate	28 Post-Job Safety Meeting (Pre Rig-Down)	
④ Arrive At Loc	⑨ Rig-Up Completed	⑭ Pump H2O Spacer	⑲ Slow Rate	24 Bump Plug	29 Rig-Down Equipment	
⑤ Assessment Of Location Safety Meeting	⑩ Pre-Job Safety Meeting	⑮ Check weight	20 Shutdown	25 Check Floats	30 Rig-Down Completed	

▼ **HALLIBURTON** | iCem® Service

Created: 2015-04-08 02:56:49, Version: 4.1.107

Edit

Customer: CAERUS OIL AND GAS LLC - EBUS

Job Date: 4/8/2015

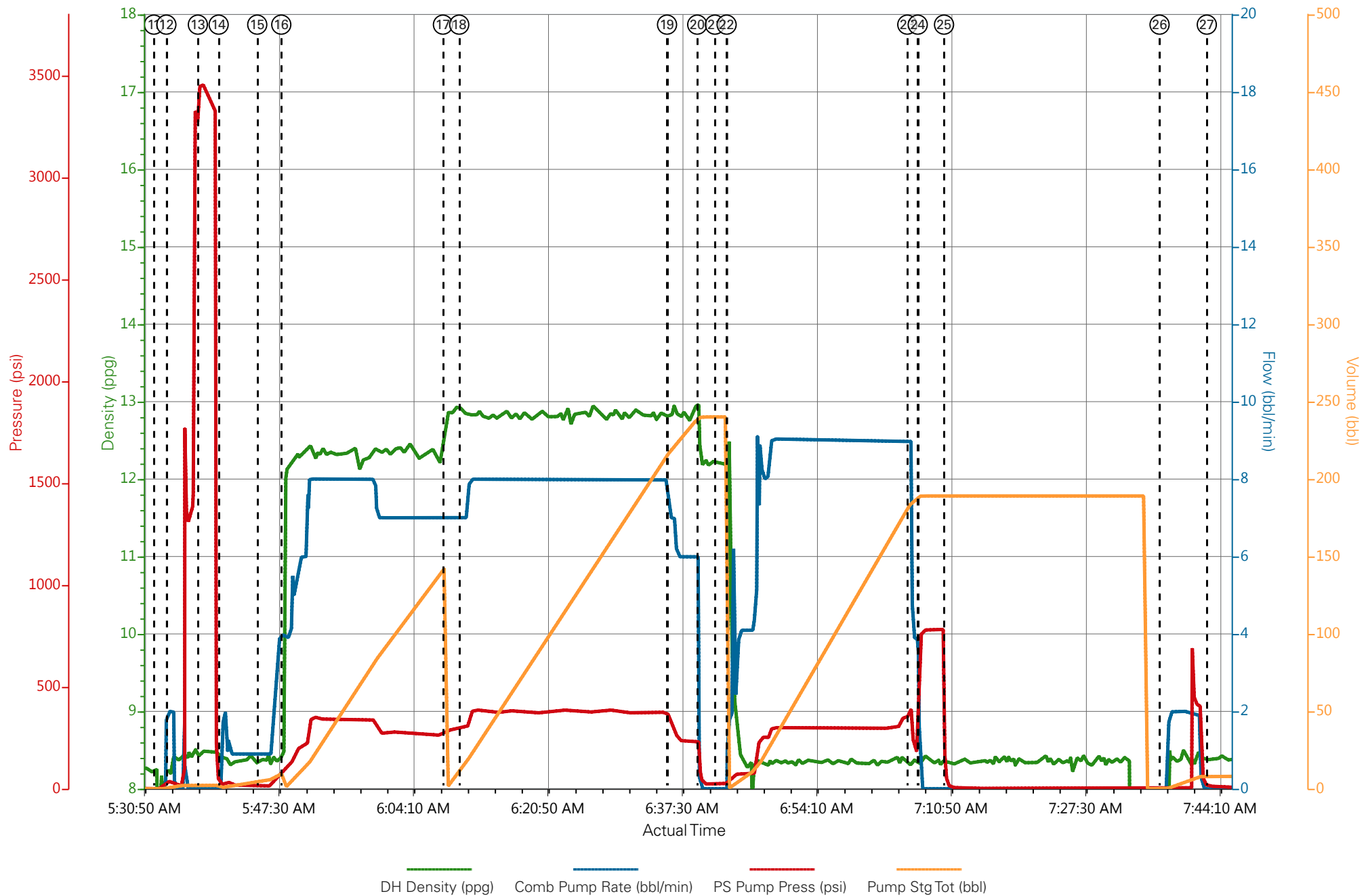
Well: PUCKETT 43A-2

Representative: WHITEY COTTAM

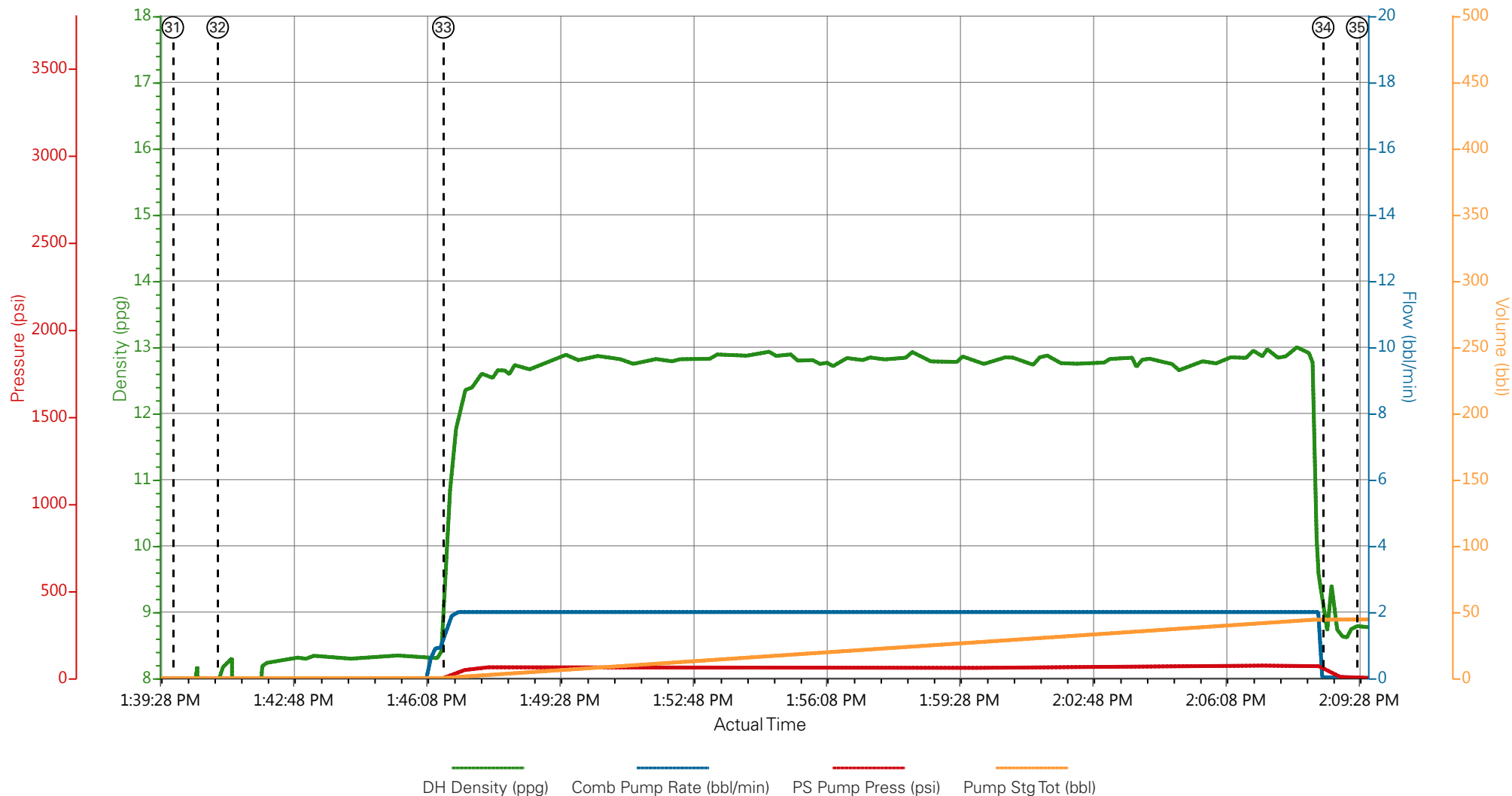
Sales Order #: 902303533

ELITE 3: DUSTIN HYDE / ADAM ANGELO / TRAVIS BROWN

CAERUS PUCKETT 43A-2 9 5/8" SURFACE



CAERUS PUCKETT 43A-2 9 5/8" TOPOUT



① Call Out	⑦ Pre-Rig Up Safety Meeting	⑬ Test Lines	⑲ Slow Rate	25 Check Floats	31 Start Job
② Pre-Convoy Safety Meeting	⑧ Rig-Up Equipment	⑭ Pump H2O Spacer	20 Shutdown	26 Post-Job Safety Meeting (Pre Rig-Down)	32 Prime Lines
③ Crew Arrive Yard	⑨ Rig-Up Completed	⑮ Check weight	21 Drop Top Plug	27 Pump Sugar Water	33 Pump Cement
④ Arrive At Loc	⑩ Pre-Job Safety Meeting	⑯ Pump Lead Cement	22 Pump Displacement	28 Rig-Up Equipment	34 Shut In Well
⑤ Assessment Of Location Safety Meeting	⑪ Start Job	⑰ Pump Tail Cement	23 Slow Rate	29 End Job	35 End Job
⑥ Spot Equipment	⑫ Prime Lines	⑱ Check weight	24 Bump Plug	30 Pre-Job Safety Meeting	36 Post-Job Safety Meeting (Pre

▼ **HALLIBURTON** | iCem® Service

Created: 2015-04-08 02:56:49, Version: 4.1.107

Edit

Customer: CAERUS OIL AND GAS LLC - EBUS

Job Date: 4/8/2015

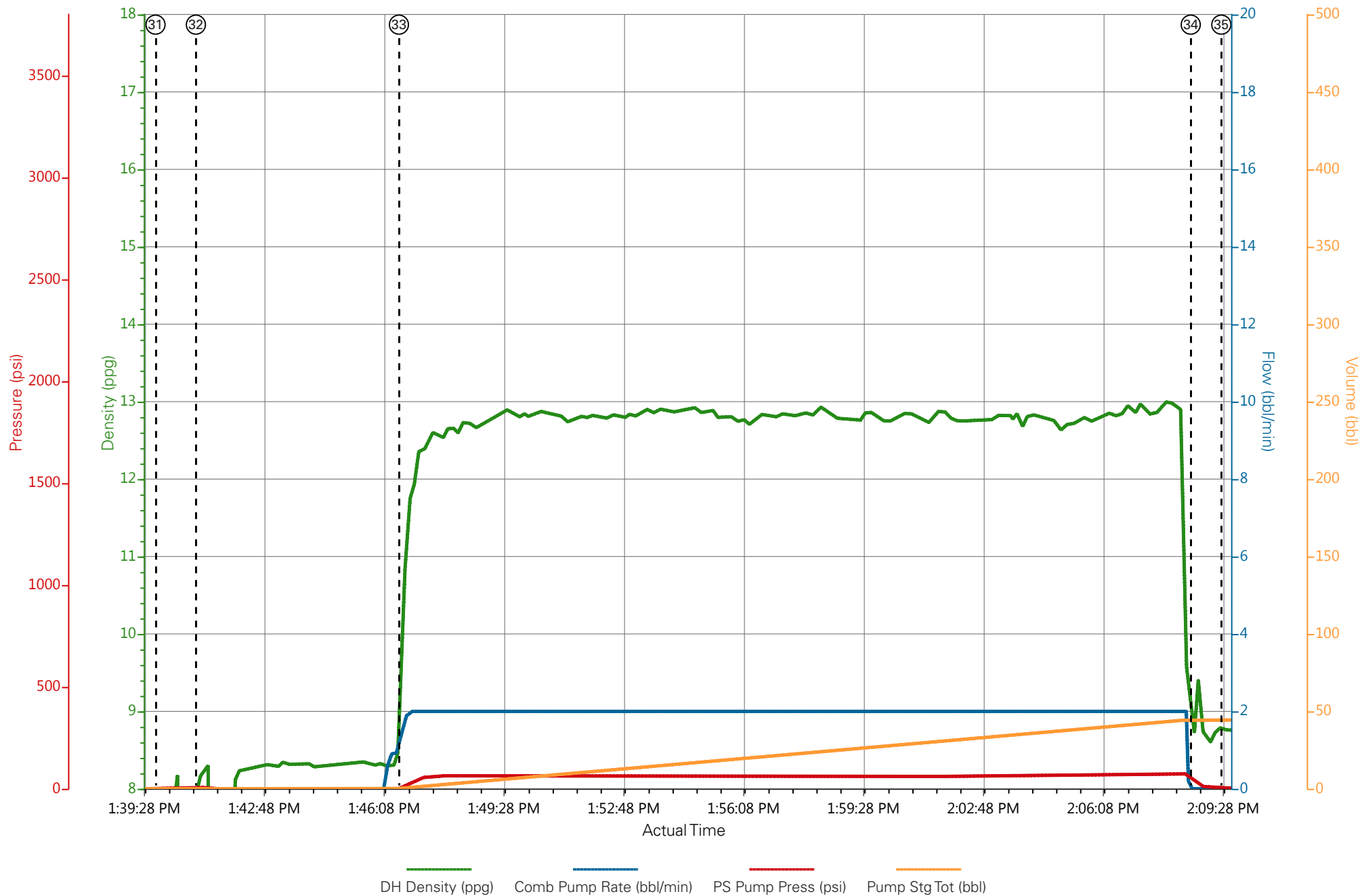
Well: PUCKETT 43A-2

Representative: WHITEY COTTAM

Sales Order #: 902303533

ELITE 3: DUSTIN HYDE / ADAM ANGELO / TRAVIS BROWN

CAERUS PUCKETT 43A-2 9 5/8" TOPOUT



HALLIBURTON

Water Analysis Report

Company: CAERUS
Submitted by: Dustin Hyde
Attention: J.TROUT
Lease: PUCKETT
Well #: 43A-2

Date: 4/8/2015
Date Rec.: 4/8/2015
S.O.#: 902303533
Job Type: SURFACE

Specific Gravity	<i>MAX</i>	1
pH	<i>8</i>	7
Potassium (K)	<i>5000</i>	200 Mg / L
Calcium (Ca)	<i>500</i>	120 Mg / L
Iron (FE2)	<i>300</i>	3 Mg / L
Chlorides (Cl)	<i>3000</i>	0 Mg / L
Sulfates (SO ₄)	<i>1500</i>	<200 Mg / L
Temp	<i>40-80</i>	50 Deg
Total Dissolved Solids		470 Mg / L

Respectfully: Dustin Hyde
Title: Cement Supervisor
Location: Grand Junction, CO

NOTICE: This report is limited to the described sample tested. Any person using or relying on this report agrees that Halliburton shall not be liable for any loss or damage whether due to act or omission resulting from such report or its use

Sales Order #: 0902303533	Line Item: 10	Survey Conducted Date: 4/9/2015
Customer: CAERUS OIL AND GAS LLC - EBUS		Job Type (BOM): CMT SURFACE CASING BOM
Customer Representative:		API / UWI: (leave blank if unknown) 05-045-22635-00
Well Name: PUCKETT		Well Number: 0080702188
Well Type: DIRECTIONAL GAS	Well Country: USA	
H2S Present: No	Well State: COLORADO	Well County: GARFIELD

Dear Customer,

We hope that you were satisfied with the service quality of this job performed by Halliburton. It is the aim of our management and service personnel to deliver equipment and service of a standard unmatched in the service sector of the energy industry.

Please take the time to let us know if our performance met with your satisfaction. Please be as critical as possible to ensure we constantly improve our service. Your comments are of great value to us and are intended for the exclusive use of Halliburton.

CUSTOMER SATISFACTION SURVEY

CATEGORY	CUSTOMER SATISFACTION RESPONSE	
Survey Conducted Date	The date the survey was conducted	4/8/2015
Survey Interviewer	The survey interviewer is the person who initiated the survey.	HB43597
Customer Participation	Did the customer participate in this survey? (Y/N)	No
Customer Representative	Enter the Customer representative name	
HSE	Was our HSE performance satisfactory? Circle Y or N	
Equipment	Were you satisfied with our Equipment? Circle Y or N	
Personnel	Were you satisfied with our people? Circle Y or N	
Customer Comment	Customer's Comment	

CUSTOMER SIGNATURE

Sales Order #: 0902303533	Line Item: 10	Survey Conducted Date: 4/9/2015
Customer: CAERUS OIL AND GAS LLC - EBUS		Job Type (BOM): CMT SURFACE CASING BOM
Customer Representative:		API / UWI: (leave blank if unknown) 05-045-22635-00
Well Name: PUCKETT		Well Number: 0080702188
Well Type: DIRECTIONAL GAS	Well Country: USA	
H2S Present: No	Well State: COLORADO	Well County: GARFIELD

KEY PERFORMANCE INDICATORS

General	
Survey Conducted Date	4/9/2015
The date the survey was conducted	

Cementing KPI Survey	
Type of Job	0
Select the type of job. (Cementing or Non-Cementing)	
Select the Maximum Deviation range for this Job	Vertical
What is the highest deviation for the job you just completed? This may not be the maximum well deviation.	
Total Operating Time (hours)	5
Total Operating Hours Including Rig-up, Pumping, Rig-down. Enter in decimal format.	
HSE Incident, Accident, Injury	No
HSE Incident, Accident, Injury. This should be recordable incidents only.	
Was the job purpose achieved?	Yes
Was the job delivered correctly as per customer agreed design?	
Pumping Hours	4
Total number of hours pumping fluid on this job. Enter in decimal format.	
Type of Rig Classification Job Was Performed	Drilling Rig (Portable)
Type Of Rig (classification) Job Was Performed On	
Number Of JSAs Performed	5
Number Of Jsas Performed	
Was this a Primary Cement Job (Yes / No)	Yes
Primary Cement Job= Casing job, Liner job, or Tie-back job.	
Number of Unplanned Shutdowns	0
Unplanned shutdown is when injection stops for any period of time.	
Customer Non-Productive Rig Time (hrs)	0

Sales Order #: 0902303533	Line Item: 10	Survey Conducted Date: 4/9/2015
Customer: CAERUS OIL AND GAS LLC - EBUS		Job Type (BOM): CMT SURFACE CASING BOM
Customer Representative:		API / UWI: (leave blank if unknown) 05-045-22635-00
Well Name: PUCKETT		Well Number: 0080702188
Well Type: DIRECTIONAL GAS	Well Country: USA	
H2S Present: No	Well State: COLORADO	Well County: GARFIELD

Lost time due to Halliburton in the start, execution, or completion of an ordered service or product, or delays in a follow-on service. Enter in decimal format. 0 if none.	
Was the non productive time or the unplanned shutdown caused by a problem with a piece of equipment? Was the non productive time or the unplanned shutdown caused by a problem with a piece of equipment?	No
Did We Run Wiper Plugs? Did We Run Top And Bottom Casing Wiper Plugs?	Top
If a top plug was run, was the plug bumped? (Yes/No/N/A) If a top plug was run, was the plug bumped? (Yes/No/N/A)	Yes
If applicable, was Halliburton float equipment used? (Yes/No/N/A) If applicable, was Halliburton float equipment used? (Yes/No/N/A)	Not Available
If applicable, did the floats hold? (Yes/No/N/A) If applicable, did the floats hold? (Yes/No/N/A)	Yes
Mixing Density of Job Stayed in Designed Density Range (0-100%) Density Range defined as +/- .20 ppg. Calculation: Total BBLs cement mixed at designed density divided by total BBLs of cement multiplied by 100	98
Pump Rate (percent) of Job Stayed At Designed Pump Rate Pump Rate range defined as +/- 1bbl/min. Calculation: Total BBLs of fluid pumped at the designed rate divided by Total BBLs of fluid pumped, multiplied by 100	97
If applicable, were there returns throughout the job? (Yes/No/N/A) If applicable, were there returns throughout the job? (Yes/No/N/A)	No
Nbr of Remedial Plug Jobs Rqd - HES Number Of Remedial Plug Jobs Needed After Primary Plug Pumped By HES	0
Nbr of Remedial Sqz Jobs Rqd - HES Number Of Remedial Squeeze Jobs Required After Primary Job Performed By HES	0