

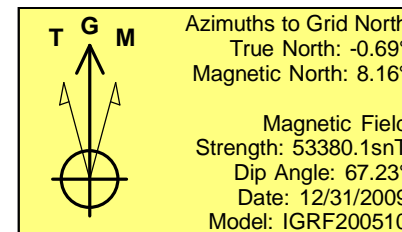
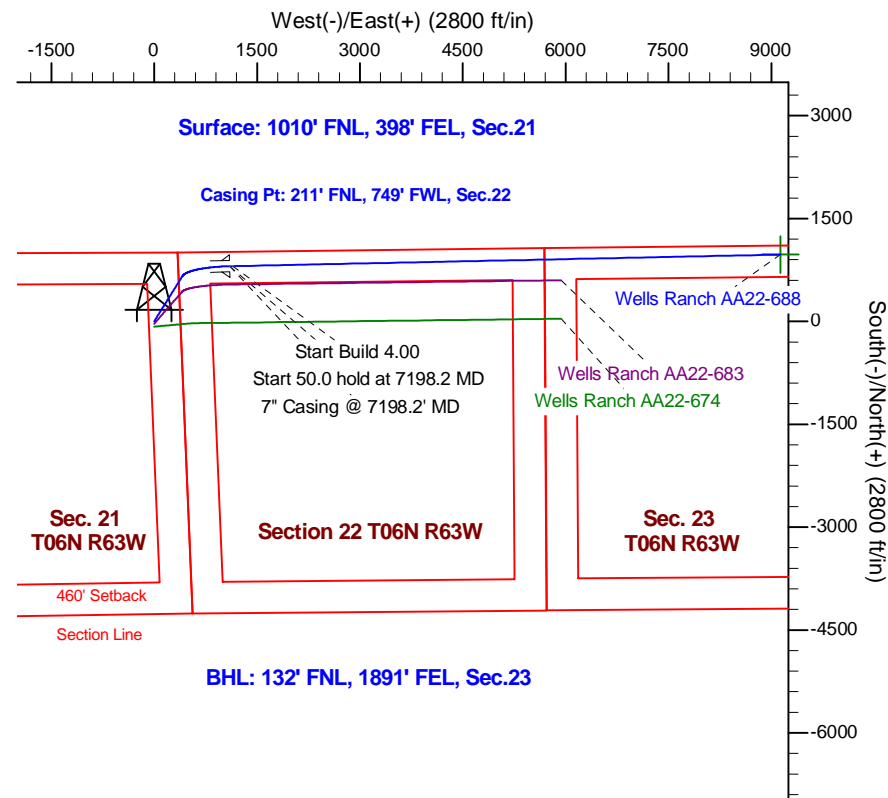
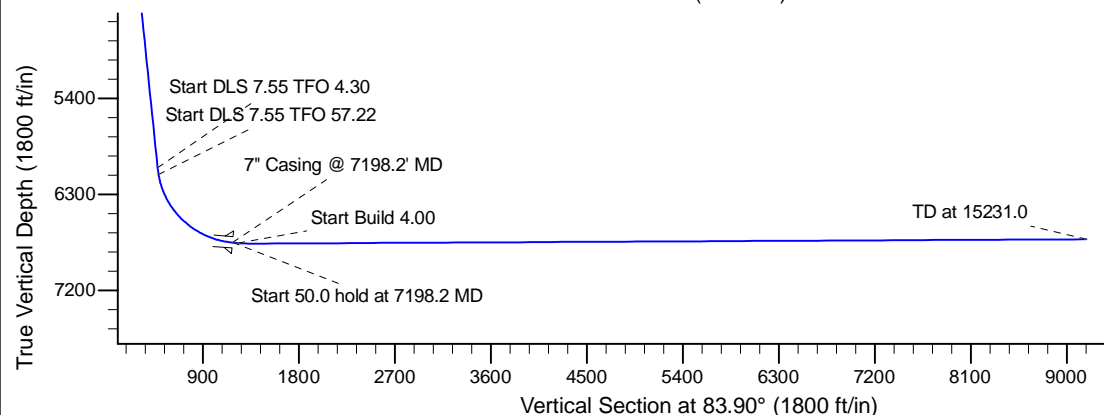
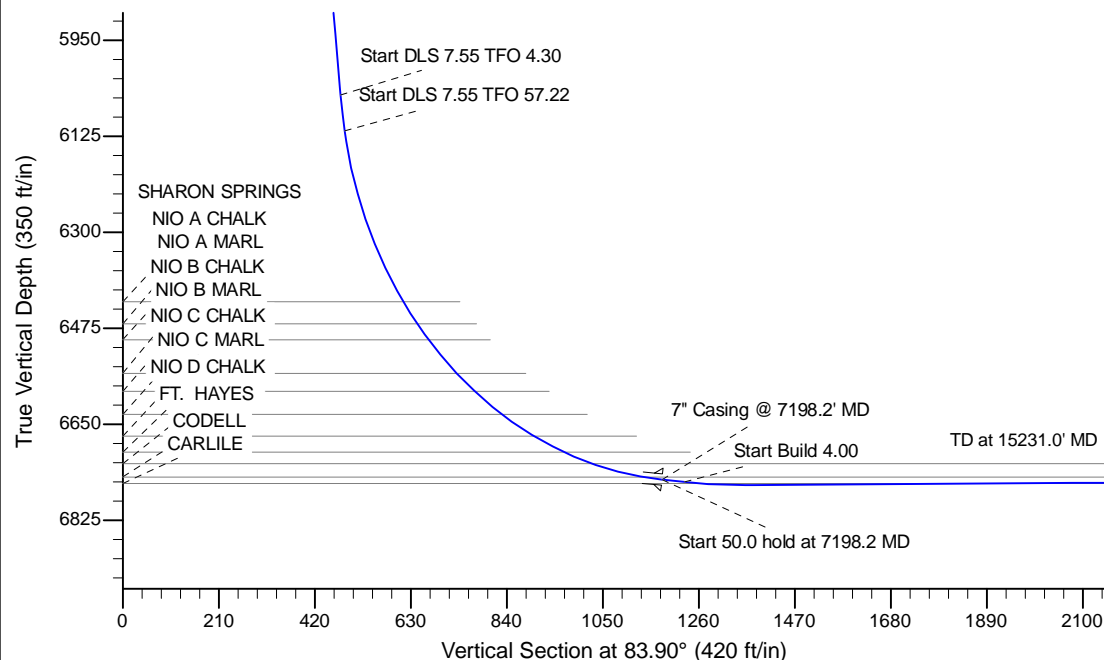
Project: Wattenberg Field  
 Site: AA (Sec.21-T06N-R63W) Weld County, CO  
 Well: Wells Ranch AA22-688  
 Wellbore: Original Drilling  
 Design: APD - Rev 0

# Northern Region Drilling - Working

Geodetic System: US State Plane 1983  
 Datum: North American Datum 1983  
 Ellipsoid: GRS 1980  
 Zone: Colorado Northern Zone  
 System Datum: Mean Sea Level

## SECTION DETAILS

Sec	MD	Inc	Azi	TVD	+N/-S	+E/-W	Dleg	TFace	VSec	Target
1	0.0	0.00	0.00	0.0	0.0	0.0	0.00	0.00	0.0	
2	1200.0	0.00	0.00	1200.0	0.0	0.0	0.00	0.00	0.0	
3	1675.0	9.50	32.00	1672.8	33.3	20.8	2.00	32.00	24.2	
4	6113.0	9.50	32.00	6050.0	654.5	409.0	0.00	0.00	476.2	
5	6180.0	14.54	33.51	6115.4	666.2	416.5	7.55	4.30	484.9	
6	7198.2	85.00	88.79	6751.0	805.0	1100.0	7.55	57.22	1179.3	
7	7248.2	85.00	88.79	6755.4	806.1	1149.8	0.00	0.00	1228.9	
8	7380.7	90.30	88.79	6760.8	808.8	1282.1	4.00	0.00	1360.7	
9	15231.0	90.30	88.78	6719.9	975.0	9130.5	0.00	-121.90	9182.4	Wells Ranch AA22-688 BHL 132'FNL, 1891'FEL



WELL DETAILS: Wells Ranch AA22-688					
Ground Level:4712.0					
0.0	0.0	Northing	Easting	Latitude	Longitude
		1418237.30	3296546.78	40.476570	-104.434010
Plan: APD - Rev 0 (Wells Ranch AA22-688/Original Drilling)					
Created By: Shailey Jewell			Date: 13:32, April 15 2015		
OK to submit with 2A as per Noble Drilling					
4/15/2015 1:39					