

T1N, R65W, 6th P.M.

GREAT WESTERN OIL & GAS COMPANY

Well location, TAOKA KF 01-039HN, located as shown in the SE 1/4 SE 1/4 of Section 1, T1N, R65W, 6th P.M., Weld County, Colorado.

BASIS OF ELEVATION

HUBBS TRIANGULATION STATION LOCATED IN THE NE 1/4 OF SECTION 21, T1N, R64W, 6th. P.M., TAKEN FROM THE KEENESBURG, QUADRANGLE, COLORADO, WELD COUNTY, 7.5 MINUTE QUAD (TOPOGRAPHIC MAP) PUBLISHED BY THE UNITED STATES DEPARTMENT OF THE INTERIOR, GEOLOGICAL SURVEY. SAID ELEVATION IS MARKED AS BEING 5168 FEET.

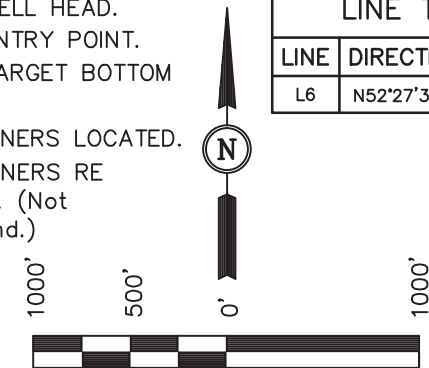
BASIS OF BEARINGS

BASIS OF BEARINGS IS A G.P.S. OBSERVATION.

LEGEND:

- ◻ = 90° SYMBOL
- = PROPOSED WELL HEAD.
- ◊ = PROPOSED ENTRY POINT.
- = PROPOSED TARGET BOTTOM HOLE.
- ▲ = SECTION CORNERS LOCATED.
- △ = SECTION CORNERS RE ESTABLISHED. (Not Set on Ground.)

LINE TABLE		
LINE	DIRECTION	LENGTH
L6	N52°27'39"E	387.81'



SCALE  
CERTIFICATE

THIS IS TO CERTIFY THAT THE ABOVE PLAT WAS PREPARED FROM FIELD NOTES OF ACTUAL SURVEYS MADE BY ME OR UNDER MY SUPERVISION AND THAT THE SAME ARE TRUE AND CORRECT TO THE BEST OF MY KNOWLEDGE AND BELIEF.

REGISTERED LAND SURVEYOR  
REGISTRATION NO. 17492  
STATE OF COLORADO  
09-05-13

REVISED: 10-24-13  
REVISED: 02-27-13  
REVISED: 01-22-13

UINTAH ENGINEERING & LAND SURVEYING  
85 SOUTH 200 EAST - VERNAL, UTAH 84078  
(435) 789-1017

SCALE 1" = 1000'	DATE SURVEYED: 11-30-12	DATE DRAWN: 12-03-12
PARTY Z.B. D.S. J.W.	REFERENCES G.L.O. PLAT	
WEATHER COOL	FILE GREAT WESTERN OIL & GAS COMPANY	

Priv. Alum. Cap  
0.2' Below Ground  
LS 25937  
Lat: 40.087417°  
Long: 104.602675°

True  
Position

S89°36'27"E - 2628.29' (Meas.)

T2N

T1N

Target Bottom  
Hole

LOT 2

LOT 1

1

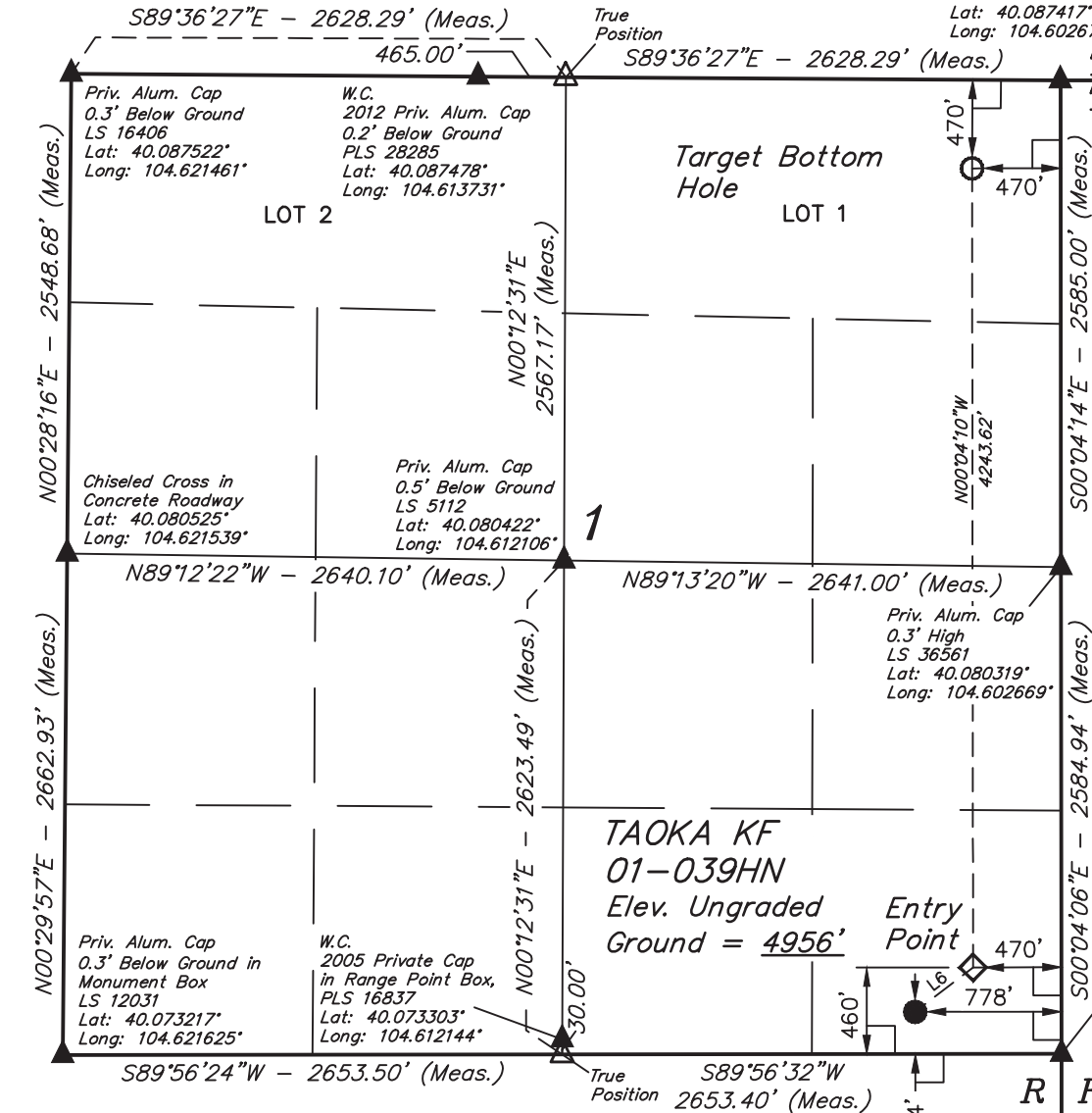
TAOKA KF  
01-039HN  
Elev. Ungraded  
Ground = 4956'

Entry  
Point

Priv. Alum. Cap  
0.5' Below Ground  
LS 13482  
Lat: 40.073225°  
Long: 104.602664°

R  
65  
W

PDOP = 1.8



NAD 83 (TARGET BOTTOM HOLE)	NAD 83 (ENTRY POINT)	NAD 83 (SURFACE LOCATION)
LATITUDE = 40°05'10.09" (40.086136)	LATITUDE = 40°04'28.15" (40.074486)	LATITUDE = 40°04'25.82" (40.073839)
LONGITUDE = 104°36'15.68" (104.604356)	LONGITUDE = 104°36'15.64" (104.604344)	LONGITUDE = 104°36'19.60" (104.605444)
NAD 27 (TARGET BOTTOM HOLE)	NAD 27 (ENTRY POINT)	NAD 27 (SURFACE LOCATION)
LATITUDE = 40°05'10.15" (40.086153)	LATITUDE = 40°04'28.21" (40.074503)	LATITUDE = 40°04'25.88" (40.073856)
LONGITUDE = 104°36'13.81" (104.603836)	LONGITUDE = 104°36'13.77" (104.603825)	LONGITUDE = 104°36'17.73" (104.604925)