



Lease Review All - Frac Summary
Well Name: HORSETAIL 30F-1941

API Number 051233874200		WPC ID 1CO0761018		Well Permit Number		Field Name DJ Horizontal Niobrara		County Weld		State CO						
Well Configuration Type Lateral/Horizontal				Orig KB Elv (ft) 4,800.00		Ground Elevation (ft) 4,783.00		Casing Flange Elevation (ft)		Tubing Head Elevation (ft)		Total Depth (ftKB) 13,938.0				
Original Spud Date 10/30/2014		Completion Date 2/20/2015		Asset Group Redtail		Responsible Engineer Charles Ohlson		N/S Dist (ft) 2,324.0		N/S Ref FNL		E/W Dist (ft) 1,860.0		E/W Ref FWL		
Lot		Quarter 1 SE	Quarter 2 NW	Quarter 3	Quarter 4	Section 30	Section Suffix	Section Type	Township 10	Township N/S Dir N	Range 57	Range E/W Dir W	Meridian			
Lateral/Horizontal - Original Hole, 8/19/2015 7:16:19 AM						Wellbore Sections										
MD (ftKB)	D (ft K B)	n (K B)	c (K B)	l (K B)	Vertical schematic (actual)	Logs	Wellbore Name		Start Date		Size (in)		Act Top (ftKB)		Act Btm (ftKB)	
							Original Hole		4/23/2014		20		17.0		97.0	
							Original Hole		10/30/2014		13 1/2		97.0		1,610.0	
							Original Hole		10/31/2014		8 3/4		1,610.0		6,222.0	
							Original Hole		11/3/2014		6		6,222.0		13,938.0	
Conductor Pipe, 97.0ftKB																
OD (in)		Wt (lb/ft)		Grade		Top (ftKB)		Btm (ftKB)		Len (ft)		Item Des				
16		84.00		K-55		17.0		97.0		80.00		Casing Joints				
Surface Csg, 1,595.1ftKB																
OD (in)		Wt (lb/ft)		Grade		Top (ftKB)		Btm (ftKB)		Len (ft)		Item Des				
9 5/8		36.00		J-55		17.0		17.0		0.00		Landing Joint				
9 5/8		36.00		J-55		17.0		22.0		5.00		Wellhead /PUP				
9 5/8		36.00		J-55		22.0		1,552.1		1,530.05		Casing Joints				
9 5/8		36.00		J-55		1,552.1		1,553.6		1.50		Float Collar				
9 5/8		36.00		J-55		1,553.6		1,593.6		40.05		Casing Joints				
9 5/8		36.00		J-55		1,593.6		1,595.1		1.50		Float Shoe				
Frac String, 5,198.6ftKB																
OD (in)		Wt (lb/ft)		Grade		Top (ftKB)		Btm (ftKB)		Len (ft)		Item Des				
7						17.0		18.0		1.05		Casing Hanger				
4 1/2				11.60		18.0		59.7		41.66		4.5# P-110 BTC-TXP 11.6# casing				
4 1/2						59.7		78.5		18.83		4.5" BTC-TXP spaceout pup jt				
4 1/2				11.60		78.5		5,191.1		5,112.54		4.5# P-110 BTC-TXP 11.6# casing				
4 1/2						5,191.1		5,197.2		6.16		4.5" P-110,11.6# handing pup jt				
5 1/4						5,197.2		5,198.6		1.33		Baker Hughes seal assembly				
Intermediate Csg, 6,202.0ftKB																
OD (in)		Wt (lb/ft)		Grade		Top (ftKB)		Btm (ftKB)		Len (ft)		Item Des				
7		29.00		P-110		17.0		17.0		0.00		Landing Joint				
7		29.00		P-110		17.0		22.0		5.00		Hanger/ PUP				
7		29.00		P-110		22.0		6,161.2		6,139.25		Casing Joints				
7		29.00		P-110		6,161.2		6,162.7		1.50		Float Collar				
7		29.00		P-110		6,162.7		6,201.0		38.27		Casing Joints				
7		29.00		P-110		6,201.0		6,202.0		1.00		Float Shoe				
Liner, 13,928.0ftKB																
OD (in)		Wt (lb/ft)		Grade		Top (ftKB)		Btm (ftKB)		Len (ft)		Item Des				
4 1/2		11.60		P-110		5,198.6		5,198.6		0.00		Casing Joints				
4 1/2		11.60		P-110		5,198.6		5,211.0		12.43		Tie Back Extesion				
6.184		11.60		P-110		5,211.0		5,219.5		8.50		Liner Top Packer				
6.184		11.60		P-110		5,219.5		5,226.1		6.59		Liner Hanger				
4 1/2		11.60		P-110		5,226.1		5,227.1		1.00		Cross Over				
4 1/2		11.60		P-110		5,227.1		5,232.5		5.37		Pup Joint				
4 1/2		11.60		P-110		5,232.5		13,824.6		8,592.15		Casing Joints				
4 1/2		11.60		P-110		13,824.6		13,830.8		6.23		Pup Joint				
4 1/2		11.60		P-110		13,830.8		13,834.6		3.73		Alpha Sleeve				
4 1/2		11.60		P-110		13,834.6		13,836.7		2.10		Pup Joint				
4 1/2		11.60		P-110		13,836.7		13,880.0		43.34		Casing Joints				
4 1/2		11.60		P-110		13,880.0		13,881.5		1.50		Type 2 Landing Collar				
4 1/2		11.60		P-110		13,881.5		13,882.6		1.04		Float Collar				
4 1/2		11.60		P-110		13,882.6		13,925.4		42.85		Casing Joints				
4 1/2		11.60		P-110		13,925.4		13,928.0		2.60		Float Shoe				
Cement Stages																
Des		Pump Start Date		Drill Out Date		Top (ftKB)		Btm (ftKB)		Top Meas Meth						
Conductor Cement		4/23/2014				17.0		97.0		Returns to Surface						
Surface Casing Cement		10/30/2014				17.0		1,595.1		Returns to Surface						
Intermediate Casing Cement		11/2/2014				17.0		6,202.0		Returns to Surface						
Liner Cement		10/12/2014				5,211.0		13,928.0		Returns to Surface						
Liner Cement		10/12/2014														
Perforations																
Type of Hole		Date		Top (ftKB)		Btm (ftKB)		Zone								
Perforated Liner		2/20/2015		6,225.0		6,227.0		Niobrara, Original Hole								
Perforated Liner		2/20/2015		6,289.0		6,291.0		Niobrara, Original Hole								
Perforated Liner		2/20/2015		6,352.0		6,354.0		Niobrara, Original Hole								
Perforated Liner		2/20/2015		6,416.0		6,418.0		Niobrara, Original Hole								
Perforated Liner		2/20/2015		6,480.0		6,482.0		Niobrara, Original Hole								
Perforated Liner		2/20/2015		6,543.0		6,545.0		Niobrara, Original Hole								
Perforated Liner		2/20/2015		6,607.0		6,609.0		Niobrara, Original Hole								
Perforated Liner		2/20/2015		6,671.0		6,673.0		Niobrara, Original Hole								



Lease Review All - Frac Summary
Well Name: HORSETAIL 30F-1941

API Number 051233874200		WPC ID 1CO0761018		Well Permit Number		Field Name DJ Horizontal Niobrara			County Weld			State CO			
Well Configuration Type Lateral/Horizontal				Orig KB Elv (ft) 4,800.00		Ground Elevation (ft) 4,783.00		Casing Flange Elevation (ft)		Tubing Head Elevation (ft)		Total Depth (ft)KB 13,938.0			
Original Spud Date 10/30/2014		Completion Date 2/20/2015		Asset Group Redtail			Responsible Engineer Charles Ohlson			N/S Dist (ft) 2,324.0		N/S Ref FNL	E/W Dist (ft) 1,860.0		E/W Ref FWL
Lot	Quarter 1 SE	Quarter 2 NW	Quarter 3	Quarter 4	Section 30	Section Suffix	Section Type	Township 10	Township N/S Dir N	Range 57	Range E/W Dir W	Meridian			

Lateral/Horizontal - Original Hole, 8/19/2015 7:16:21 AM										Perforations				
		D (ft K B)		n c l (ft)		Vertical schematic (actual)		Logs		Type of Hole	Date	Top (ftKB)	Btm (ftKB)	Zone
MD (ftKB)	97.1	0.01	0.01	0.01	0.01					Perforated Liner	2/20/2015	6,735.0	6,737.0	Niobrara, Original Hole
										Perforated Liner	2/20/2015	6,798.0	6,800.0	Niobrara, Original Hole
										Perforated Liner	2/20/2015	6,862.0	6,864.0	Niobrara, Original Hole
										Perforated Liner	2/20/2015	6,926.0	6,928.0	Niobrara, Original Hole
										Perforated Liner	2/19/2015	6,989.0	6,991.0	Niobrara, Original Hole
										Perforated Liner	2/19/2015	7,053.0	7,055.0	Niobrara, Original Hole
										Perforated Liner	2/19/2015	7,117.0	7,119.0	Niobrara, Original Hole
										Perforated Liner	2/19/2015	7,180.0	7,182.0	Niobrara, Original Hole
										Perforated Liner	2/19/2015	7,244.0	7,246.0	Niobrara, Original Hole
										Perforated Liner	2/19/2015	7,308.0	7,310.0	Niobrara, Original Hole
										Perforated Liner	2/19/2015	7,371.0	7,373.0	Niobrara, Original Hole
										Perforated Liner	2/19/2015	7,435.0	7,437.0	Niobrara, Original Hole
										Perforated Liner	2/19/2015	7,497.0	7,499.0	Niobrara, Original Hole
										Perforated Liner	2/19/2015	7,562.0	7,564.0	Niobrara, Original Hole
										Perforated Liner	2/19/2015	7,622.0	7,624.0	Niobrara, Original Hole
										Perforated Liner	2/19/2015	7,690.0	7,692.0	Niobrara, Original Hole
										Perforated Liner	2/19/2015	7,756.0	7,758.0	Niobrara, Original Hole
										Perforated Liner	2/19/2015	7,817.0	7,819.0	Niobrara, Original Hole
										Perforated Liner	2/19/2015	7,883.0	7,885.0	Niobrara, Original Hole
										Perforated Liner	2/19/2015	7,945.0	7,947.0	Niobrara, Original Hole
										Perforated Liner	2/19/2015	8,008.0	8,010.0	Niobrara, Original Hole
										Perforated Liner	2/19/2015	8,072.0	8,074.0	Niobrara, Original Hole
										Perforated Liner	2/19/2015	8,136.0	8,138.0	Niobrara, Original Hole
										Perforated Liner	2/19/2015	8,199.0	8,201.0	Niobrara, Original Hole
										Perforated Liner	2/19/2015	8,263.0	8,265.0	Niobrara, Original Hole
										Perforated Liner	2/18/2015	8,327.0	8,329.0	Niobrara, Original Hole
										Perforated Liner	2/18/2015	8,390.0	8,392.0	Niobrara, Original Hole
										Perforated Liner	2/18/2015	8,454.0	8,456.0	Niobrara, Original Hole
										Perforated Liner	2/18/2015	8,518.0	8,520.0	Niobrara, Original Hole
										Perforated Liner	2/18/2015	8,581.0	8,583.0	Niobrara, Original Hole
										Perforated Liner	2/18/2015	8,645.0	8,647.0	Niobrara, Original Hole
										Perforated Liner	2/18/2015	8,709.0	8,711.0	Niobrara, Original Hole
										Perforated Liner	2/18/2015	8,773.0	8,775.0	Niobrara, Original Hole
										Perforated Liner	2/18/2015	8,833.0	8,835.0	Niobrara, Original Hole
										Perforated Liner	2/18/2015	8,900.0	8,902.0	Niobrara, Original Hole
										Perforated Liner	2/18/2015	8,960.0	8,962.0	Niobrara, Original Hole
										Perforated Liner	2/18/2015	9,027.0	9,029.0	Niobrara, Original Hole
										Perforated Liner	2/18/2015	9,091.0	9,093.0	Niobrara, Original Hole
										Perforated Liner	2/18/2015	9,155.0	9,157.0	Niobrara, Original Hole
										Perforated Liner	2/18/2015	9,218.0	9,220.0	Niobrara, Original Hole
										Perforated Liner	2/18/2015	9,282.0	9,284.0	Niobrara, Original Hole
										Perforated Liner	2/18/2015	9,346.0	9,348.0	Niobrara, Original Hole
										Perforated Liner	2/18/2015	9,409.0	9,411.0	Niobrara, Original Hole
										Perforated Liner	2/17/2015	9,473.0	9,475.0	Niobrara, Original Hole
										Perforated Liner	2/17/2015	9,537.0	9,539.0	Niobrara, Original Hole
										Perforated Liner	2/17/2015	9,601.0	9,603.0	Niobrara, Original Hole
										Perforated Liner	2/17/2015	9,664.0	9,666.0	Niobrara, Original Hole
										Perforated Liner	2/17/2015	9,728.0	9,730.0	Niobrara, Original Hole
										Perforated Liner	2/17/2015	9,792.0	9,794.0	Niobrara, Original Hole
										Perforated Liner	2/17/2015	9,855.0	9,857.0	Niobrara, Original Hole
										Perforated Liner	2/17/2015	9,919.0	9,921.0	Niobrara, Original Hole
										Perforated Liner	2/17/2015	9,983.0	9,985.0	Niobrara, Original Hole
										Perforated Liner	2/17/2015	10,046.0	10,048.0	Niobrara, Original Hole
										Perforated Liner	2/17/2015	10,110.0	10,112.0	Niobrara, Original Hole
										Perforated Liner	2/17/2015	10,174.0	10,176.0	Niobrara, Original Hole
										Perforated Liner	2/17/2015	10,237.0	10,239.0	Niobrara, Original Hole
										Perforated Liner	2/17/2015	10,296.0	10,298.0	Niobrara, Original Hole
										Perforated Liner	2/17/2015	10,365.0	10,367.0	Niobrara, Original Hole
										Perforated Liner	2/17/2015	10,433.0	10,435.0	Niobrara, Original Hole
										Perforated Liner	2/17/2015	10,492.0	10,494.0	Niobrara, Original Hole
										Perforated Liner	2/17/2015	10,562.0	10,564.0	Niobrara, Original Hole
										Perforated Liner	2/16/2015	10,620.0	10,622.0	Niobrara, Original Hole
										Perforated Liner	2/16/2015	10,678.0	10,680.0	Niobrara, Original Hole
										Perforated Liner	2/16/2015	10,747.0	10,749.0	Niobrara, Original Hole
										Perforated Liner	2/16/2015	10,813.0	10,815.0	Niobrara, Original Hole
										Perforated Liner	2/16/2015	10,874.0	10,876.0	Niobrara, Original Hole
										Perforated Liner	2/16/2015	10,940.0	10,942.0	Niobrara, Original Hole
										Perforated Liner	2/16/2015	11,002.0	11,004.0	Niobrara, Original Hole
										Perforated Liner	2/16/2015	11,067.0	11,069.0	Niobrara, Original Hole
										Perforated Liner	2/16/2015	11,129.0	11,131.0	Niobrara, Original Hole



Lease Review All - Frac Summary

Well Name: HORSETAIL 30F-1941

API Number 051233874200		WPC ID 1CO0761018		Well Permit Number		Field Name DJ Horizontal Niobrara			County Weld			State CO			
Well Configuration Type Lateral/Horizontal				Orig KB Elv (ft) 4,800.00		Ground Elevation (ft) 4,783.00		Casing Flange Elevation (ft)		Tubing Head Elevation (ft)		Total Depth (ftKB) 13,938.0			
Original Spud Date 10/30/2014		Completion Date 2/20/2015		Asset Group Redtail			Responsible Engineer Charles Ohlson			N/S Dist (ft) 2,324.0		N/S Ref FNL	E/W Dist (ft) 1,860.0		E/W Ref FWL
Lot	Quarter 1 SE	Quarter 2 NW	Quarter 3	Quarter 4	Section 30	Section Suffix	Section Type	Township 10	Township N/S Dir N	Range 57	Range E/W Dir W	Meridian			

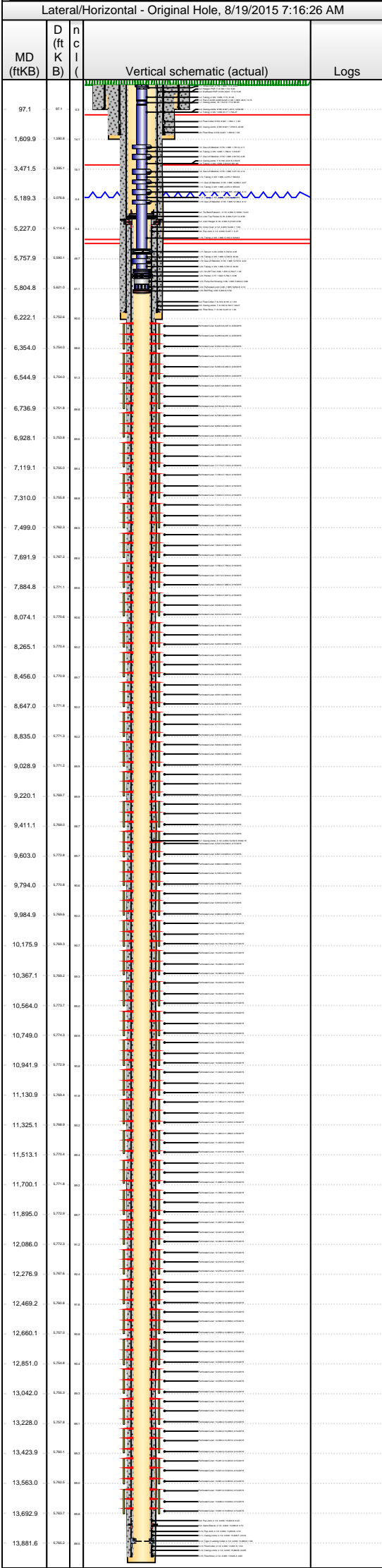
Lateral/Horizontal - Original Hole, 8/19/2015 7:16:23 AM					Perforations							
MD (ftKB)	D (ft K B)	n (K B)	c (K B)	Vertical schematic (actual)	Logs	Type of Hole		Date	Top (ftKB)	Btm (ftKB)	Zone	
97.1 1,609.9 3,471.5 5,189.3 5,227.0 5,757.9 5,804.8 6,222.1 6,354.0 6,544.9 6,736.9 6,928.1 7,119.1 7,310.0 7,499.0 7,691.9 7,884.8 8,074.1 8,265.1 8,456.0 8,647.0 8,835.0 9,028.9 9,220.1 9,411.1 9,603.0 9,794.0 9,984.9 10,175.9 10,367.1 10,564.0 10,749.0 10,941.9 11,130.9 11,325.1 11,513.1 11,700.1 11,895.0 12,086.0 12,276.9 12,469.2 12,660.1 12,851.0 13,042.0 13,228.0 13,423.9 13,563.0 13,692.9 13,881.6	001 001 <											



Lease Review All - Frac Summary

Well Name: HORSETAIL 30F-1941

API Number 051233874200			WPC ID 1CO0761018			Well Permit Number			Field Name DJ Horizontal Niobrara			County Weld			State CO	
Well Configuration Type Lateral/Horizontal					Orig KB Elv (ft) 4,800.00		Ground Elevation (ft) 4,783.00		Casing Flange Elevation (ft)		Tubing Head Elevation (ft)		Total Depth (ft)KB 13,938.0			
Original Spud Date 10/30/2014		Completion Date 2/20/2015		Asset Group Redtail			Responsible Engineer Charles Ohlson			N/S Dist (ft) 2,324.0		N/S Ref FNL	E/W Dist (ft) 1,860.0		E/W Ref FWL	
Lot	Quarter 1 SE	Quarter 2 NW	Quarter 3	Quarter 4	Section 30	Section Suffix	Section Type	Township 10	Township N/S Dir N	Range 57	Range E/W Dir W	Meridian				



Stim/Treat Stages							
Interval 3							
Stg #	Start Date	Top (ftKB)	Btm (ftKB)	Vol Clean...	Vol Slurry...	Comment	
3	2/14/2015	13,294.0	13,424.0	3115.90		Slickwater:697 bbl; pHaserFrac #22 XL Gel:1800 bbl; 22 Linear Gel:299 bbl;15% HCl:24bbl;Freshwater:297bbl	
Stim/Treat Additives							
Stg #	Add		Type		Amount	Units	Sand Size
3	Proppant		20/40 Ottawa		114,834.0	lb	20/40
3	Proppant		40/70 Ottawa		2,998.0	lb	40/70
Interval 4							
Stg #	Start Date	Top (ftKB)	Btm (ftKB)	Vol Clean...	Vol Slurry...	Comment	
4	2/14/2015	13,102.0	13,228.0	3585.10		Slickwater:696 bbl; pHaserFrac #22 XL Gel:2259 bbl; 22 Linear Gel:297 bbl;15% HCl:24bbl;Freshwater:309bbl	
Stim/Treat Additives							
Stg #	Add		Type		Amount	Units	Sand Size
4	Proppant		20/40 Ottawa		176,622.0	lb	20/40
4	Proppant		40/70 Ottawa		2,915.0	lb	40/70
Interval 5							
Stg #	Start Date	Top (ftKB)	Btm (ftKB)	Vol Clean...	Vol Slurry...	Comment	
5	2/14/2015	12,912.0	13,042.0	3501.30		Slickwater:699 bbl; pHaserFrac #22 XL Gel:2168 bbl; 22 Linear Gel:298 bbl;15% HCl:24bbl;Freshwater:312bbl	
Stim/Treat Additives							
Stg #	Add		Type		Amount	Units	Sand Size
5	Proppant		20/40 Ottawa		176,787.0	lb	20/40
5	Proppant		40/70 Ottawa		2,932.0	lb	40/70
Interval 6							
Stg #	Start Date	Top (ftKB)	Btm (ftKB)	Vol Clean...	Vol Slurry...	Comment	
6	2/15/2015	12,721.0	12,851.0	3782.60		Slickwater:896 bbl; pHaserFrac #22 XL Gel:2257 bbl; 22 Linear Gel:297 bbl;15% HCl:24bbl;Freshwater:308bbl	
Stim/Treat Additives							
Stg #	Add		Type		Amount	Units	Sand Size
6	Proppant		20/40 Ottawa		174,354.0	lb	20/40
6	Proppant		40/70 Ottawa		2,918.0	lb	40/70
Interval 7							
Stg #	Start Date	Top (ftKB)	Btm (ftKB)	Vol Clean...	Vol Slurry...	Comment	
7	2/15/2015	12,530.0	12,660.0	3467.20		Slickwater:687 bbl; pHaserFrac #22 XL Gel:2174 bbl; 22 Linear Gel:298 bbl;15% HCl:24bbl;Freshwater:284bbl	
Stim/Treat Additives							
Stg #	Add		Type		Amount	Units	Sand Size
7	Proppant		20/40 Ottawa		171,532.0	lb	20/40
7	Proppant		40/70 Ottawa		3,232.0	lb	40/70
Interval 8							
Stg #	Start Date	Top (ftKB)	Btm (ftKB)	Vol Clean...	Vol Slurry...	Comment	
8	2/15/2015	12,339.0	12,469.0	3405.00		Slickwater:685 bbl; pHaserFrac #22 XL Gel:2134 bbl; 22 Linear Gel:305 bbl;15% HCl:24bbl;Freshwater:257bbl	
Stim/Treat Additives							
Stg #	Add		Type		Amount	Units	Sand Size
8	Proppant		20/40 Ottawa		168,230.0	lb	20/40
8	Proppant		40/70 Ottawa		3,161.0	lb	40/70
Interval 9							
Stg #	Start Date	Top (ftKB)	Btm (ftKB)	Vol Clean...	Vol Slurry...	Comment	
9	2/15/2015	12,148.0	12,277.0	3365.00		Slickwater:681 bbl; pHaserFrac #22 XL Gel:2123 bbl; 22 Linear Gel:297 bbl;15% HCl:24bbl;Freshwater:241bbl	
Stim/Treat Additives							
Stg #	Add		Type		Amount	Units	Sand Size
9	Proppant		20/40 Ottawa		181,254.0	lb	20/40
9	Proppant		40/70 Ottawa		2,982.0	lb	40/70
Interval 10							
Stg #	Start Date	Top (ftKB)	Btm (ftKB)	Vol Clean...	Vol Slurry...	Comment	
10	2/15/2015	11,957.0	12,086.0	3418.50		Slickwater:680 bbl; pHaserFrac #22 XL Gel:2149 bbl; 22 Linear Gel:299 bbl;15% HCl:24bbl;Freshwater:268bbl	
Stim/Treat Additives							
Stg #	Add		Type		Amount	Units	Sand Size
10	Proppant		20/40 Ottawa		175,195.0	lb	20/40
10	Proppant		40/70 Ottawa		2,452.0	lb	40/70
Interval 11							
Stg #	Start Date	Top (ftKB)	Btm (ftKB)	Vol Clean...	Vol Slurry...	Comment	
11	2/15/2015	11,766.0	11,895.0	3400.00		Slickwater:675 bbl; pHaserFrac #22 XL Gel:2150 bbl; 22 Linear Gel:298 bbl;15% HCl:24bbl;Freshwater:252bbl	
Stim/Treat Additives							
Stg #	Add		Type		Amount	Units	Sand Size
11	Proppant		20/40 Ottawa		176,652.0	lb	20/40
11	Proppant		40/70 Ottawa		3,015.0	lb	40/70



Lease Review All - Frac Summary
Well Name: HORSETAIL 30F-1941

API Number 051233874200		WPC ID 1CO0761018		Well Permit Number		Field Name DJ Horizontal Niobrara			County Weld			State CO			
Well Configuration Type Lateral/Horizontal			Orig KB Elv (ft) 4,800.00		Ground Elevation (ft) 4,783.00		Casing Flange Elevation (ft)		Tubing Head Elevation (ft)		Total Depth (ft)KB 13,938.0				
Original Spud Date 10/30/2014		Completion Date 2/20/2015		Asset Group Redtail			Responsible Engineer Charles Ohlson			N/S Dist (ft) 2,324.0		N/S Ref FNL	E/W Dist (ft) 1,860.0		E/W Ref FWL
Lot	Quarter 1 SE	Quarter 2 NW	Quarter 3	Quarter 4	Section 30	Section Suffix	Section Type	Township 10	Township N/S Dir N	Range 57	Range E/W Dir W	Meridian			

Lateral/Horizontal - Original Hole, 8/19/2015 7:16:28 AM												Stim/Treat Stages											
MD (ftKB)	D (ft K B)	n c l (Vertical schematic (actual)	Logs	Interval 12																		
					Stg #	Start Date	Top (ftKB)	Btm (ftKB)	Vol Clean...	Vol Slurry...	Comment												
97.1	87.1	13			12	2/15/2015	11,570.0	11,700.0	3404.00		Slickwater:665 bbl; pHaserFrac #22 XL Gel:2158 bbl; 22 Linear Gel:298 bbl;15% HCl:24bbl;Freshwater:259bbl												
Stim/Treat Additives												Logs	Stg #	Add		Type		Amount	Units	Sand Size			
													12	Proppant		20/40 Ottawa		180,472.0	lb	20/40			
													12	Proppant		40/70 Ottawa		3,045.0	lb	40/70			
Interval 13												Logs	Stg #	Start Date	Top (ftKB)	Btm (ftKB)	Vol Clean...	Vol Slurry...	Comment				
1,609.9	1,380.8	161		13	2/16/2015	11,384.0	11,513.0	3349.90		Slickwater:668 bbl; pHaserFrac #22 XL Gel:2131 bbl; 22 Linear Gel:298 bbl;15% HCl:24bbl;Freshwater:229bbl													
3,471.5	3,285.7	81		13	2/16/2015	11,384.0	11,513.0	3349.90		Slickwater:668 bbl; pHaserFrac #22 XL Gel:2131 bbl; 22 Linear Gel:298 bbl;15% HCl:24bbl;Freshwater:229bbl													
Stim/Treat Additives												Logs	Stg #	Add		Type		Amount	Units	Sand Size			
													13	Proppant		20/40 Ottawa		182,762.0	lb	20/40			
													13	Proppant		40/70 Ottawa		3,146.0	lb	40/70			
Interval 14												Logs	Stg #	Start Date	Top (ftKB)	Btm (ftKB)	Vol Clean...	Vol Slurry...	Comment				
5,189.3	5,104.4	84		14	2/16/2015	11,195.0	11,325.0	3371.80		Slickwater:666 bbl; pHaserFrac #22 XL Gel:2131 bbl; 22 Linear Gel:298 bbl;15% HCl:24bbl;Freshwater:253bbl													
5,227.0	5,104.4	84		14	2/16/2015	11,195.0	11,325.0	3371.80		Slickwater:666 bbl; pHaserFrac #22 XL Gel:2131 bbl; 22 Linear Gel:298 bbl;15% HCl:24bbl;Freshwater:253bbl													
Stim/Treat Additives												Logs	Stg #	Add		Type		Amount	Units	Sand Size			
													14	Proppant		20/40 Ottawa		174,106.0	lb	20/40			
													14	Proppant		40/70 Ottawa		3,070.0	lb	40/70			
Interval 15												Logs	Stg #	Start Date	Top (ftKB)	Btm (ftKB)	Vol Clean...	Vol Slurry...	Comment				
5,757.9	5,680.7	87		15	2/16/2015	11,002.0	11,131.0	3338.40		Slickwater:663 bbl; pHaserFrac #22 XL Gel:2110 bbl; 22 Linear Gel:298 bbl;15% HCl:24bbl;Freshwater:244bbl													
5,804.8	5,680.0	87		15	2/16/2015	11,002.0	11,131.0	3338.40		Slickwater:663 bbl; pHaserFrac #22 XL Gel:2110 bbl; 22 Linear Gel:298 bbl;15% HCl:24bbl;Freshwater:244bbl													
Stim/Treat Additives												Logs	Stg #	Add		Type		Amount	Units	Sand Size			
													15	Proppant		20/40 Ottawa		169,455.0	lb	20/40			
													15	Proppant		40/70 Ottawa		3,099.0	lb	40/70			
Interval 16												Logs	Stg #	Start Date	Top (ftKB)	Btm (ftKB)	Vol Clean...	Vol Slurry...	Comment				
6,222.1	6,100.0	88		16	2/16/2015	10,813.0	10,942.0	3593.50		Slickwater:666 bbl; pHaserFrac #22 XL Gel:2160 bbl; 22 Linear Gel:298 bbl;15% HCl:24bbl;Freshwater:446bbl													
6,354.0	6,100.0	88		16	2/16/2015	10,813.0	10,942.0	3593.50		Slickwater:666 bbl; pHaserFrac #22 XL Gel:2160 bbl; 22 Linear Gel:298 bbl;15% HCl:24bbl;Freshwater:446bbl													
Stim/Treat Additives												Logs	Stg #	Add		Type		Amount	Units	Sand Size			
													16	Proppant		20/40 Ottawa		170,688.0	lb	20/40			
													16	Proppant		40/70 Ottawa		2,511.0	lb	40/70			
Interval 17												Logs	Stg #	Start Date	Top (ftKB)	Btm (ftKB)	Vol Clean...	Vol Slurry...	Comment				
6,544.9	6,540.0	81		17	2/16/2015	10,620.0	10,749.0	3368.00		Slickwater:664 bbl; pHaserFrac #22 XL Gel:2131 bbl; 22 Linear Gel:298 bbl;15% HCl:24bbl;Freshwater:251bbl													
6,736.9	6,510.8	84		17	2/16/2015	10,620.0	10,749.0	3368.00		Slickwater:664 bbl; pHaserFrac #22 XL Gel:2131 bbl; 22 Linear Gel:298 bbl;15% HCl:24bbl;Freshwater:251bbl													
Stim/Treat Additives												Logs	Stg #	Add		Type		Amount	Units	Sand Size			
													17	Proppant		20/40 Ottawa		168,984.0	lb	20/40			
													17	Proppant		40/70 Ottawa		3,351.0	lb	40/70			
Interval 18												Logs	Stg #	Start Date	Top (ftKB)	Btm (ftKB)	Vol Clean...	Vol Slurry...	Comment				
6,928.1	6,700.8	88		18	2/17/2015	10,433.0	10,564.0	3358.80		Slickwater:665 bbl; pHaserFrac #22 XL Gel:2138 bbl; 22 Linear Gel:298 bbl;15% HCl:24bbl;Freshwater:234bbl													
7,119.1	6,700.0	88		18	2/17/2015	10,433.0	10,564.0	3358.80		Slickwater:665 bbl; pHaserFrac #22 XL Gel:2138 bbl; 22 Linear Gel:298 bbl;15% HCl:24bbl;Freshwater:234bbl													
Stim/Treat Additives												Logs	Stg #	Add		Type		Amount	Units	Sand Size			
													18	Proppant		20/40 Ottawa		175,667.0	lb	20/40			
													18	Proppant		40/70 Ottawa		2,848.0	lb	40/70			
Interval 19												Logs	Stg #	Start Date	Top (ftKB)	Btm (ftKB)	Vol Clean...	Vol Slurry...	Comment				
7,310.0	7,100.8	84		19	2/17/2015	10,237.0	10,367.0	3342.10		Slickwater:647 bbl; pHaserFrac #22 XL Gel:2135 bbl; 22 Linear Gel:298 bbl;15% HCl:24bbl;Freshwater:239bbl													
7,499.0	7,100.0	84		19	2/17/2015	10,237.0	10,367.0	3342.10		Slickwater:647 bbl; pHaserFrac #22 XL Gel:2135 bbl; 22 Linear Gel:298 bbl;15% HCl:24bbl;Freshwater:239bbl													
Stim/Treat Additives												Logs	Stg #	Add		Type		Amount	Units	Sand Size			
													19	Proppant		20/40 Ottawa		178,871.0	lb	20/40			
													19	Proppant		40/70 Ottawa		2,954.0	lb	40/70			
Interval 20												Logs	Stg #	Start Date	Top (ftKB)	Btm (ftKB)	Vol Clean...	Vol Slurry...	Comment				
7,691.9	7,507.2	87		20	2/17/2015	10,046.0	10,176.0	3315.00		Slickwater:647 bbl; pHaserFrac #22 XL Gel:2134 bbl; 22 Linear Gel:298 bbl;15% HCl:24bbl;Freshwater:212bbl													
7,884.8	7,511.1	84		20	2/17/2015	10,046.0	10,176.0	3315.00		Slickwater:647 bbl; pHaserFrac #22 XL Gel:2134 bbl; 22 Linear Gel:298 bbl;15% HCl:24bbl;Freshwater:212bbl													
Stim/Treat Additives												Logs	Stg #	Add		Type		Amount	Units	Sand Size			
													20	Proppant		20/40 Ottawa		186,605.0	lb	20/40			
													20	Proppant		40/70 Ottawa		3,040.0	lb	40/70			
8,074.1	7,700.8	88																					
8,265.1	7,700.0	88																					
8,456.0	7,700.0	88																					
8,647.0	7,710.8	88																					
8,835.0	7,711.3	88																					
9,028.9	7,711.2	88																					
9,220.1	7,780.7	88																					
9,411.1	7,780.0	88																					
9,603.0	7,770.8	88																					
9,794.0	7,770.8	88																					
9,984.9	7,788.8	88																					
10,175.9	7,780.3	88																					
10,367.1	7,780.3	88																					
10,564.0	7,770.7	88																					
10,749.0	7,770.3	88																					
10,941.9	7,770.8	88																					
11,130.9	7,788.4	88																					
11,325.1	7,788.3	88																					
11,513.1	7,770.4	88																					
11,700.1	7,771.8	88																					
11,895.0	7,770.8	88																					
12,086.0	7,770.3	88																					
12,276.9	7,787.8	88																					
12,469.2	7,780.8	88																					
12,660.1	7,787.0	88																					
12,851.0	7,788.8	88																					
13,042.0	7,780.3	88																					
13,228.0	7,787.8	88																					
13,423.9	7,780.1	88																					
13,563.0	7,780.3	88																					
13,892.9	7,780.7	88																					
13,881.6	7,780.2	88																					

<div><div><div></div><div>WHITING</div></div><div>Lease Review All - Frac Summary</div><div>Well Name: HORSETAIL 30F-1941</div></div>														
API Number 051233874200			WPC ID 1CO0761018			Well Permit Number			Field Name DJ Horizontal Niobrara			County Weld	State CO	
Well Configuration Type Lateral/Horizontal			Orig KB Elv (ft) 4,800.00			Ground Elevation (ft) 4,783.00			Casing Flange Elevation (ft)		Tubing Head Elevation (ft)		Total Depth (ftKB) 13,938.0	
Original Spud Date 10/30/2014		Completion Date 2/20/2015		Asset Group Redtail			Responsible Engineer Charles Ohlson			N/S Dist (ft) 2,324.0		N/S Ref FNL	E/W Dist (ft) 1,860.0	E/W Ref FWL
Lot		Quarter 1 SE	Quarter 2 NW	Quarter 3	Quarter 4	Section 30	Section Suffix	Section Type	Township 10	Township N/S Dir N	Range 57	Range E/W Dir W	Meridian	
Lateral/Horizontal - Original Hole, 8/19/2015 7:16:31 AM						Stim/Treat Stages								
<div><div>MD (ftKB)</div><div>D (ft K B)</div><div>n c l (</div></div>	<div><div>Vertical schematic (actual)</div><div></div></div>	<div>Logs</div>	Interval 21											
			Stg # 21	Start Date 2/17/2015	Top (ftKB) 9,855.0	Btm (ftKB) 9,985.0	Vol Clean... 3304.50	Vol Slurry...	Comment Slickwater:645 bbl; pHaserFrac #22 XL Gel:2132 bbl; 22 Linear Gel:298 bbl;15% HCl:24bbl;Freshwater:206bbl					
			Stim/Treat Additives											
			Stg #	Add	Type			Amount		Units	Sand Size			
			21	Proppant	20/40 Ottawa			173,255.0		lb	20/40			
			21	Proppant	40/70 Ottawa			2,959.0		lb	40/70			
			Interval 22											
			Stg # 22	Start Date 2/17/2015	Top (ftKB) 9,664.0	Btm (ftKB) 9,794.0	Vol Clean... 3343.80	Vol Slurry...	Comment Slickwater:642 bbl; pHaserFrac #22 XL Gel:2136 bbl; 22 Linear Gel:312 bbl;15% HCl:24bbl;Freshwater:230bbl					
			Stim/Treat Additives											
			Stg #	Add	Type			Amount		Units	Sand Size			
			22	Proppant	20/40 Ottawa			170,978.0		lb	20/40			
			22	Proppant	40/70 Ottawa			2,485.0		lb	40/70			
			Interval 23											
			Stg # 23	Start Date 2/17/2015	Top (ftKB) 9,473.0	Btm (ftKB) 9,603.0	Vol Clean... 3324.40	Vol Slurry...	Comment Slickwater:653 bbl; pHaserFrac #22 XL Gel:2149 bbl; 22 Linear Gel:303 bbl;15% HCl:24bbl;Freshwater:195bbl					
			Stim/Treat Additives											
			Stg #	Add	Type			Amount		Units	Sand Size			
			23	Proppant	20/40 Ottawa			171,194.0		lb	20/40			
			23	Proppant	40/70 Ottawa			2,764.0		lb	40/70			
			Interval 24											
			Stg # 24	Start Date 2/18/2015	Top (ftKB) 9,282.0	Btm (ftKB) 9,411.0	Vol Clean... 3277.60	Vol Slurry...	Comment Slickwater:651 bbl; pHaserFrac #22 XL Gel:2134 bbl; 22 Linear Gel:297 bbl;15% HCl:24bbl;Freshwater:172bbl					
			Stim/Treat Additives											
			Stg #	Add	Type			Amount		Units	Sand Size			
			24	Proppant	20/40 Ottawa			175,380.0		lb	20/40			
			24	Proppant	40/70 Ottawa			2,991.0		lb	40/70			
			Interval 25											
			Stg # 25	Start Date 2/18/2015	Top (ftKB) 9,091.0	Btm (ftKB) 9,220.0	Vol Clean... 3253.00	Vol Slurry...	Comment Slickwater:632 bbl; pHaserFrac #22 XL Gel:2126 bbl; 22 Linear Gel:298 bbl;15% HCl:24bbl;Freshwater:174bbl					
			Stim/Treat Additives											
			Stg #	Add	Type			Amount		Units	Sand Size			
			25	Proppant	20/40 Ottawa			175,121.0		lb	20/40			
			25	Proppant	40/70 Ottawa			2,868.0		lb	40/70			
			Interval 26											
			Stg # 26	Start Date 2/18/2015	Top (ftKB) 8,900.0	Btm (ftKB) 9,029.0	Vol Clean... 3255.10	Vol Slurry...	Comment Slickwater:582 bbl; pHaserFrac #22 XL Gel:2134 bbl; 22 Linear Gel:300 bbl;15% HCl:24bbl;Freshwater:216bbl					
			Stim/Treat Additives											
			Stg #	Add	Type			Amount		Units	Sand Size			
			26	Proppant	20/40 Ottawa			173,690.0		lb	20/40			
			26	Proppant	40/70 Ottawa			2,745.0		lb	40/70			
			Interval 27											
			Stg # 27	Start Date 2/18/2015	Top (ftKB) 8,709.0	Btm (ftKB) 8,835.0	Vol Clean... 3224.00	Vol Slurry...	Comment Slickwater:646 bbl; pHaserFrac #22 XL Gel:2124 bbl; 22 Linear Gel:298 bbl;15% HCl:24bbl;Freshwater:133bbl					
			Stim/Treat Additives											
			Stg #	Add	Type			Amount		Units	Sand Size			
			27	Proppant	20/40 Ottawa			175,853.0		lb	20/40			
			27	Proppant	40/70 Ottawa			3,694.0		lb	40/70			
			Interval 28											
			Stg # 28	Start Date 2/18/2015	Top (ftKB) 8,518.0	Btm (ftKB) 8,647.0	Vol Clean... 3232.60	Vol Slurry...	Comment Slickwater:653 bbl; pHaserFrac #22 XL Gel:2130 bbl; 22 Linear Gel:304 bbl;15% HCl:24bbl;Freshwater:123bbl					
			Stim/Treat Additives											
			Stg #	Add	Type			Amount		Units	Sand Size			
			28	Proppant	20/40 Ottawa			171,615.0		lb	20/40			
			28	Proppant	40/70 Ottawa			3,296.0		lb	40/70			
			Interval 29											
			Stg # 29	Start Date 2/18/2015	Top (ftKB) 8,327.0	Btm (ftKB) 8,456.0	Vol Clean... 3285.60	Vol Slurry...	Comment Slickwater:642 bbl; pHaserFrac #22 XL Gel:2161 bbl; 22 Linear Gel:321 bbl;15% HCl:24bbl;Freshwater:138bbl					
			Stim/Treat Additives											
			Stg #	Add	Type			Amount		Units	Sand Size			
			29	Proppant	20/40 Ottawa			173,818.0		lb	20/40			
			29	Proppant	40/70 Ottawa			3,477.0		lb	40/70			

<div><div><div></div><div>WHITING</div></div><div>Lease Review All - Frac Summary</div><div>Well Name: HORSETAIL 30F-1941</div></div>																					
API Number 051233874200			WPC ID 1CO0761018			Well Permit Number			Field Name DJ Horizontal Niobrara			County Weld		State CO							
Well Configuration Type Lateral/Horizontal				Orig KB Elv (ft) 4,800.00			Ground Elevation (ft) 4,783.00		Casing Flange Elevation (ft)		Tubing Head Elevation (ft)		Total Depth (ftKB) 13,938.0								
Original Spud Date 10/30/2014			Completion Date 2/20/2015		Asset Group Redtail			Responsible Engineer Charles Ohlson			N/S Dist (ft) 2,324.0		N/S Ref FNL		E/W Dist (ft) 1,860.0		E/W Ref FWL				
Lot		Quarter 1 SE	Quarter 2 NW	Quarter 3	Quarter 4	Section 30	Section Suffix	Section Type		Township 10	Township N/S Dir N	Range 57	Range E/W Dir W		Meridian						
Lateral/Horizontal - Original Hole, 8/19/2015 7:16:35 AM																	Stim/Treat Stages				
<div><div>MD (ftKB)</div><div>D (ft K B)</div><div>n c l (</div></div>	<div><div>Vertical schematic (actual)</div><div>Logs</div></div>	Interval 39																			
		Stg #	Start Date	Top (ftKB)		Btm (ftKB)		Vol Clean...		Vol Slurry...		Comment									
		39	2/20/2015	6,416.0		6,545.0		3122.30				Slickwater:597 bbl; pHaserFrac #22 XL Gel:2144 bbl; 22 Linear Gel:300 bbl;15% HCl:24bbl;Freshwater:58bbl									
		Stim/Treat Additives																			
		Stg #	Add			Type			Amount			Units		Sand Size							
		39	Proppant			20/40 Ottawa			172,008.0			lb		20/40							
		39	Proppant			40/70 Ottawa			1,960.0			lb		40/70							
		Interval 40																			
		Stg #	Start Date	Top (ftKB)		Btm (ftKB)		Vol Clean...		Vol Slurry...		Comment									
		40	2/20/2015	6,225.0		6,354.0		3090.50				Slickwater:596 bbl; pHaserFrac #22 XL Gel:2126 bbl; 22 Linear Gel:298 bbl;15% HCl:24bbl;Freshwater:48bbl									
		Stim/Treat Additives																			
		Stg #	Add			Type			Amount			Units		Sand Size							
		40	Proppant			20/40 Ottawa			173,698.0			lb		20/40							
		40	Proppant			40/70 Ottawa			1,760.0			lb		40/70							
		Tubing - Production set at 5,805.5ftKB on 4/13/2015 06:00																			
		Set Depth (ftKB)		Comment									Run Date			Pull Date					
		5,805.5											4/13/2015								
		Item Des				OD (in)		ID (in)		Len (ft)		Top (ftKB)		Btm (ftKB)							
		Cross Over				2 7/8		1.995		0.50		17.0		17.5							
		Tubing				2 3/8		1.995		31.00		17.5		48.5							
		Pup Jt 3.05ft 4.06ft 6.04ft				2 3/8		1.995		13.15		48.5		61.7							
		Tubing				2 3/8		1.995		1,730.27		61.7		1,791.9							
		Gas Lift Mandrel				3 7/8		1.995		4.11		1,791.9		1,796.0							
		Tubing				2 3/8		1.995		1,019.87		1,796.0		2,815.9							
		Gas Lift Mandrel				3 7/8		1.995		4.05		2,815.9		2,820.0							
		Tubing				2 3/8		1.995		651.65		2,820.0		3,471.6							
		Gas Lift Mandrel				3 7/8		1.995		4.12		3,471.6		3,475.7							
		Tubing				2 3/8		1.995		590.54		3,475.7		4,066.3							
		Gas Lift Mandrel				3 7/8		1.995		4.07		4,066.3		4,070.3							
		Tubing				2 3/8		1.995		555.00		4,070.3		4,625.3							
		Gas Lift Mandrel				3 7/8		1.995		4.14		4,625.3		4,629.5							
		Tubing				2 3/8		1.995		559.68		4,629.5		5,189.2							
		Gas Lift Mandrel				3 7/8		1.995		4.12		5,189.2		5,193.3							
		Tubing				2 3/8		1.995		529.62		5,193.3		5,722.9							
		Sensor				4.4		2.630		4.05		5,722.9		5,726.9							
		Tubing				2 3/8		1.995		30.94		5,726.9		5,757.9							
		Gas Lift Mandrel				3 7/8		1.995		4.04		5,757.9		5,761.9							
		Tubing				2 3/8		1.995		30.82		5,761.9		5,792.7							
		On-Off Tool				3.65		1.870		1.35		5,792.7		5,794.1							
		Packer				3.771		1.922		8.06		5,794.1		5,802.2							
		Pump Out Housing				3.06		1.600		0.68		5,802.2		5,802.8							
		Perforated Joint				3.06		1.995		2.10		5,802.8		5,804.9							
		Bull Plug				3.6				0.52		5,804.9		5,805.5							
		Rod Strings																			
		<des> on <dttmrun>																			
		Rod Description									Run Date				Pull Date						
		Item Des				OD (in)		Len (ft)		Top (ftKB)		Btm (ftKB)									
		Other Strings																			
		Set Depth (ftKB)		Comment									Run Date			Pull Date					
		Item Des				OD (in)		Len (ft)			Top (ftKB)		Btm (ftKB)								
		Other In Hole																			
		Des			OD (in)		Run Date		Pull Date		Top (ftKB)		Btm (ftKB)								
		CFP			4		2/20/2015		4/10/2015		6,384.0		6,386.0								
		CFP			4		2/20/2015		4/10/2015		6,575.0		6,577.0								
		CFP			4		2/20/2015		4/10/2015		6,766.0		6,768.0								
		CFP			4		2/20/2015		4/10/2015		6,962.0		6,964.0								
		CFP			4		2/19/2015		4/10/2015		7,148.0		7,150.0								
		CFP			4		2/19/2015		4/10/2015		7,342.0		7,344.0								
		CFP			4		2/19/2015		4/10/2015		7,531.0		7,533.0								
		CFP			4		2/19/2015		4/10/2015		7,722.0		7,724.0								
		CFP			4		2/19/2015		4/10/2015		7,910.0		7,912.0								
		CFP			4		2/19/2015		4/10/2015		8,104.0		8,106.0								
		CFP			4		2/19/2015		4/10/2015		8,295.0		8,297.0								
		CFP			4		2/18/2015		4/10/2015		8,486.0		8,488.0								
		CFP			4		2/18/2015		4/10/2015		8,682.0		8,684.0								
		CFP			4		2/18/2015		4/10/2015		8,868.0		8,870.0								
		CFP			4		2/18/2015		4/10/2015		9,059.0		9,061.0								
		CFP			4		2/18/2015		4/10/2015		9,250.0		9,252.0								



Lease Review All - Frac Summary

Well Name: HORSETAIL 30F-1941

API Number	WPC ID	Well Permit Number	Field Name	County	State
051233874200	1CO0761018		DJ Horizontal Niobrara	Weld	CO
Well Configuration Type	Orig KB Elv (ft)	Ground Elevation (ft)	Casing Flange Elevation (ft)	Tubing Head Elevation (ft)	Total Depth (ftKB)
Lateral/Horizontal	4,800.00	4,783.00			13,938.0
Original Spud Date	Completion Date	Asset Group	Responsible Engineer	N/S Dist (ft)	N/S Ref
10/30/2014	2/20/2015	Redtail	Charles Ohlson	2,324.0	FNL
				E/W Dist (ft)	E/W Ref
				1,860.0	FWL
Lot	Quarter 1	Quarter 2	Quarter 3	Quarter 4	Section
	SE	NW			30
			Section Suffix	Section Type	Township
					10 N
				Township N/S Dir	Range
					57 W
				Range E/W Dir	Meridian

Lateral/Horizontal - Original Hole, 8/19/2015 7:16:38 AM					Other In Hole							
MD (ftKB)	D (ft K B)	n c l (Vertical schematic (actual)	Logs	Des	OD (in)	Run Date	Pull Date	Top (ftKB)	Btm (ftKB)		
97.1	80.1	51		Logs	CFP	4	2/18/2015	4/10/2015	9,441.0	9,443.0		
1,609.9	1,389.9	111			CFP	4	2/17/2015	4/10/2015	9,629.0	9,631.0		
3,471.5	3,386.1	111			CFP	4	2/17/2015	4/10/2015	9,823.0	9,825.0		
5,189.3	5,076.0	111			CFP	4	2/17/2015	4/10/2015	10,008.0	10,010.0		
5,227.0	5,174.4	111			CFP	4	2/17/2015	4/10/2015	10,206.0	10,208.0		
5,757.9	5,685.1	111			CFP	4	2/17/2015	4/10/2015	10,397.0	10,399.0		
5,804.8	5,681.0	111			CFP	4	2/17/2015	4/10/2015	10,588.0	10,590.0		
6,222.1	6,174.4	111			CFP	4	2/16/2015	4/10/2015	10,779.0	10,781.0		
6,354.0	6,274.4	111			CFP	4	2/16/2015	4/10/2015	10,966.0	10,968.0		
6,544.9	6,474.4	111			CFP	4	2/16/2015	4/10/2015	11,161.0	11,163.0		
6,736.9	6,664.4	111			CFP	4	2/16/2015	4/10/2015	11,352.0	11,354.0		
6,928.1	6,854.4	111			CFP	4	2/16/2015	4/10/2015	11,543.0	11,545.0		
7,119.1	7,044.4	111			CFP	4	2/16/2015	4/10/2015	11,734.0	11,736.0		
7,310.0	7,234.4	111			CFP	4	2/16/2015	4/10/2015	11,931.0	11,933.0		
7,499.0	7,414.4	111			CFP	4	2/15/2015	4/10/2015	12,116.0	12,118.0		
7,691.9	7,604.4	111			CFP	4	2/15/2015	4/10/2015	12,297.0	12,299.0		
7,884.8	7,794.4	111			CFP	4	2/15/2015	4/10/2015	12,498.0	12,500.0		
8,074.1	7,974.4	111			CFP	4	2/15/2015	4/10/2015	12,689.0	12,691.0		
8,265.1	8,164.4	111			CFP	4	2/15/2015	4/10/2015	12,881.0	12,883.0		
8,456.0	8,354.4	111			CFP	4	2/15/2015	4/10/2015	13,074.0	13,076.0		
8,647.0	8,544.4	111			CFP	4	2/15/2015	4/10/2015	13,263.0	13,265.0		
8,835.0	8,734.4	111			CFP	4	2/15/2015	4/10/2015	13,454.0	13,456.0		
9,028.9	8,924.4	111			CFP	4	2/14/2015	4/10/2015	13,576.0	13,578.0		
9,220.1	9,114.4	111			CFP	4	2/14/2015	4/10/2015	13,731.0	13,733.0		
9,411.1	9,304.4	111			Bottom Hole Cores							
9,603.0	9,494.4	111			Date		Core #		Top (ftKB)		Btm (ftKB)	
9,794.0	9,684.4	111										
9,984.9	9,874.4	111										
10,175.9	10,064.4	111										
10,367.1	10,254.4	111										
10,554.0	10,444.4	111										
10,749.0	10,634.4	111										
10,941.9	10,824.4	111										
11,130.9	11,014.4	111										
11,325.1	11,204.4	111										
11,513.1	11,394.4	111										
11,700.1	11,584.4	111										
11,895.0	11,774.4	111										
12,086.0	11,964.4	111										
12,276.9	12,154.4	111										
12,469.2	12,344.4	111										
12,660.1	12,534.4	111										
12,851.0	12,724.4	111										
13,042.0	12,914.4	111										
13,228.0	13,104.4	111										
13,423.9	13,294.4	111										
13,563.0	13,434.4	111										
13,692.9	13,564.4	111										
13,881.6	13,754.4	111										