

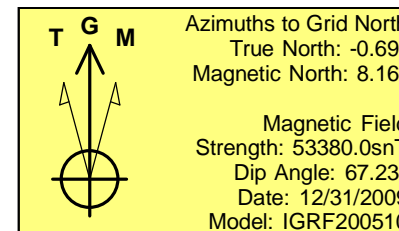
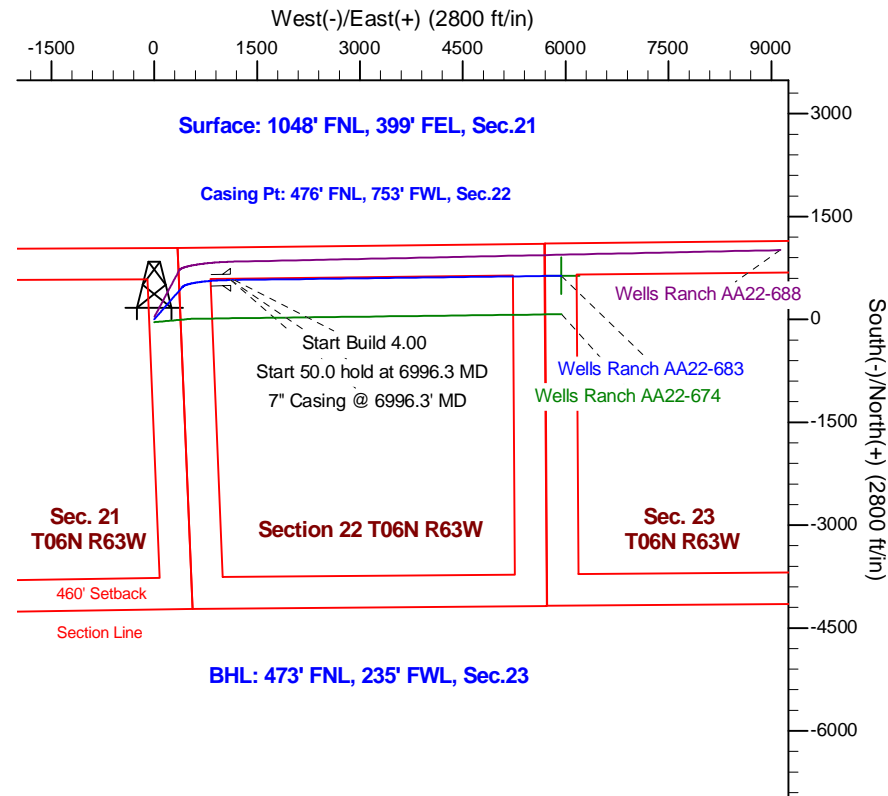
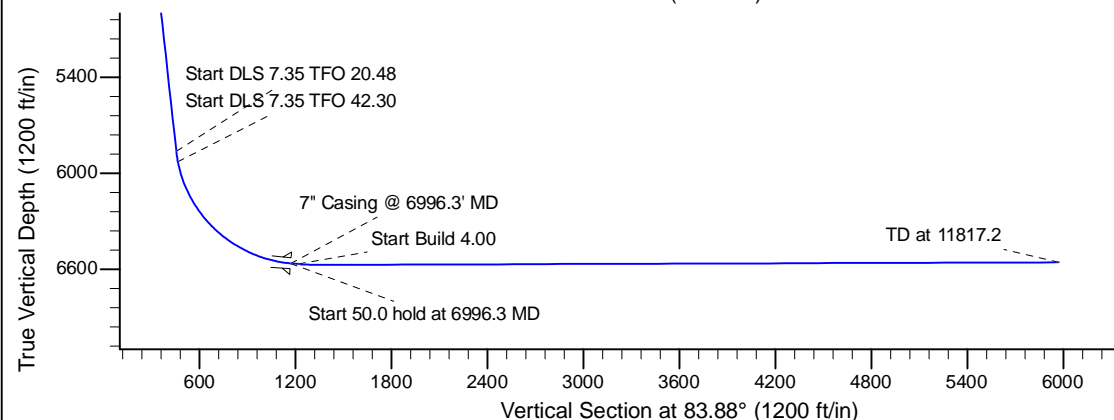
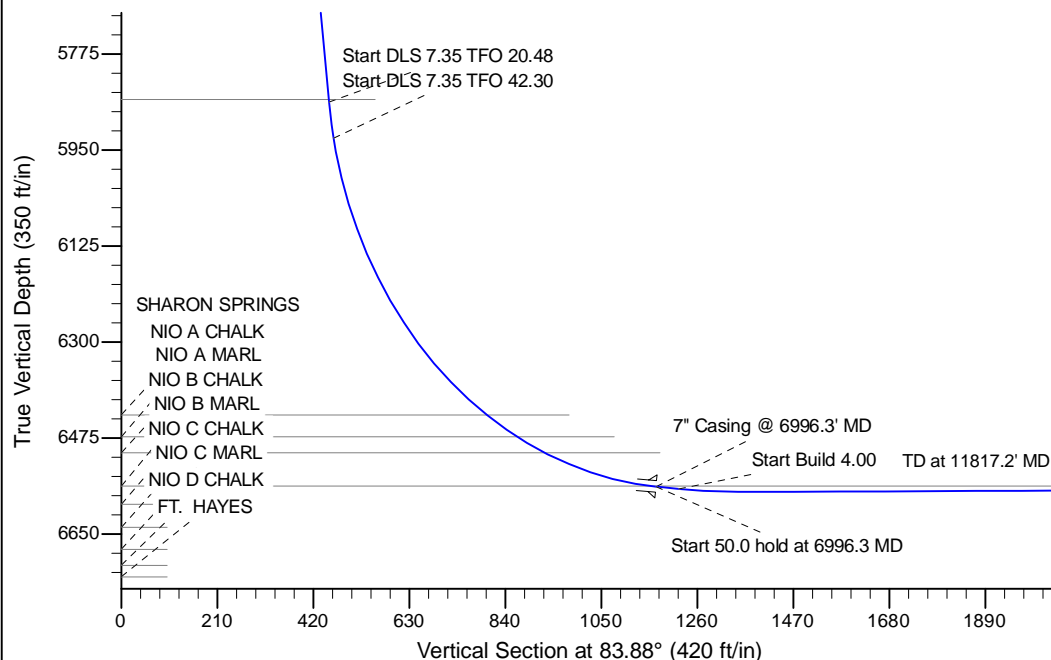
Project: Wattenberg Field
 Site: AA (Sec.21-T06N-R63W) Weld County, CO
 Well: Wells Ranch AA22-683
 Wellbore: Original Drilling
 Design: APD - Rev 0

Northern Region Drilling - Working

Geodetic System: US State Plane 1983
 Datum: North American Datum 1983
 Ellipsoid: GRS 1980
 Zone: Colorado Northern Zone
 System Datum: Mean Sea Level

SECTION DETAILS

Sec	MD	Inc	Azi	TVD	+N/-S	+E/-W	Dleg	TFace	VSec	Target
1	0.0	0.00	0.00	0.0	0.0	0.0	0.00	0.00	0.0	
2	1500.0	0.00	0.00	1500.0	0.0	0.0	0.00	0.00	0.0	
3	1925.0	8.50	41.00	1923.4	23.7	20.6	2.00	41.00	23.1	
4	5908.3	8.50	41.00	5863.0	468.1	406.9	0.00	0.00	454.5	
5	5974.4	13.16	48.47	5927.9	476.8	415.8	7.35	20.44	464.2	
6	6996.3	85.00	89.26	6563.8	575.0	1115.0	7.35	42.33	1170.0	
7	7046.3	85.00	89.26	6568.2	575.6	1164.8	0.00	0.00	1219.6	
8	7176.3	90.20	89.26	6573.6	577.3	1294.6	4.00	0.00	1348.8	
9	11817.2	90.20	89.27	6557.2	636.8	5935.1	0.00	66.25	5969.2	Wells Ranch AA22-683 BHL 473'FNL, 235'FWL



WELL DETAILS: Wells Ranch AA22-683				
Ground Level:4713.0				
	Northing	Easting	Latitude	Longitude
0.0	0.0	1418200.85	3296544.44	40.476470
				-104.434020
Plan: APD - Rev 0 (Wells Ranch AA22-683/Original Drilling)				
Created By: Shailey Jewell			Date: 13:14, April 15 2015	
OK to submit with 2A as per Noble Drilling				
4/15/2015 1:21				