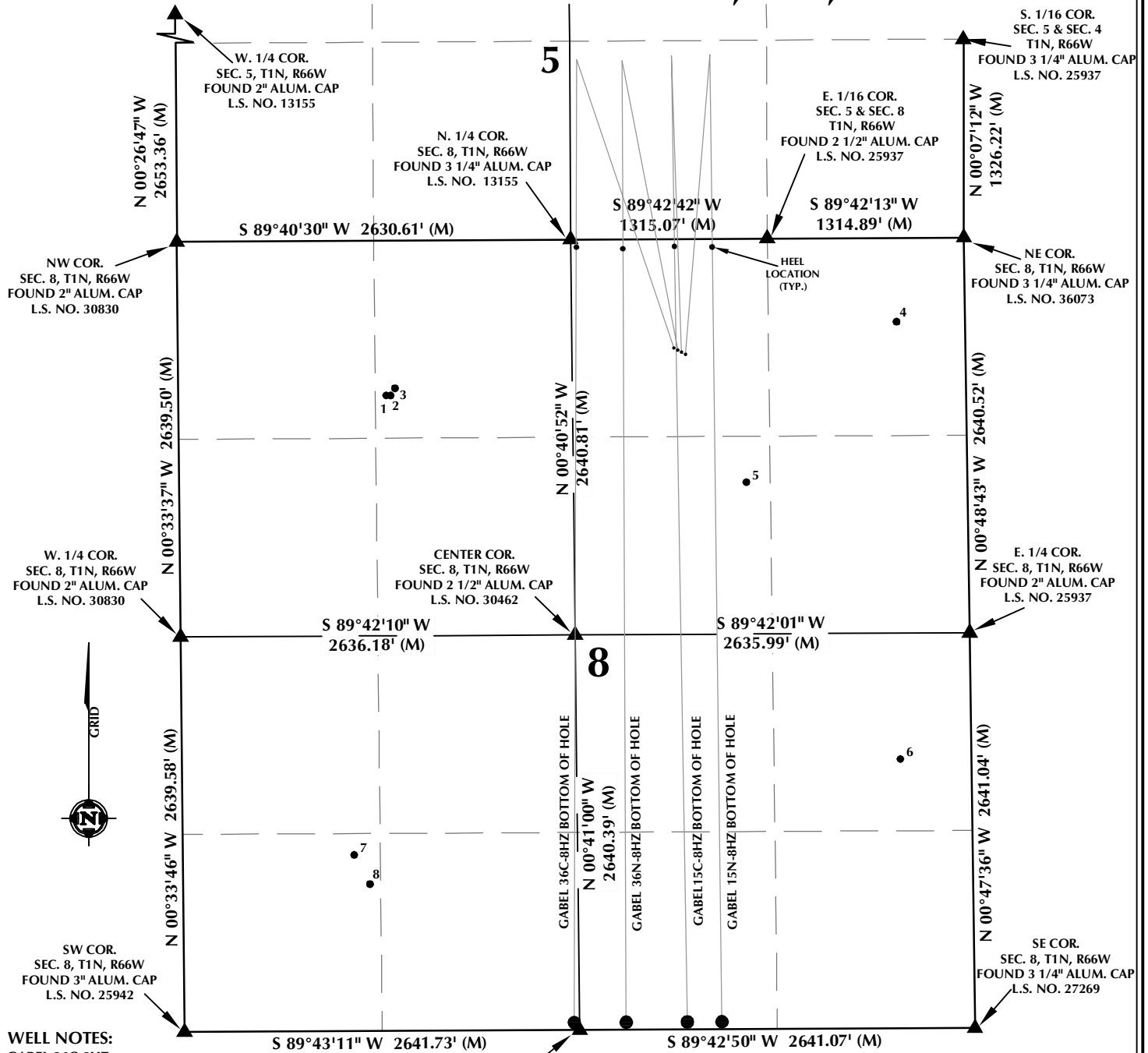


MULTI-WELL PLAN SECTION 8, T1N, R66W

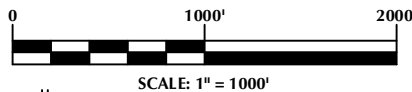


WELL NOTES:
 GABEL 36C-8HZ
 SURFACE: 727' FNL, 1950' FEL
 BOTTOM HOLE: 50' FSL, 2605' FWL
 GABEL 36N-8HZ
 SURFACE: 741' FNL, 1923' FEL
 BOTTOM HOLE: 50' FSL, 2330' FEL
 GABEL 15C-8HZ
 SURFACE: 755' FNL, 1897' FEL
 BOTTOM HOLE: 50' FSL, 1921' FEL
 GABEL 15N-8HZ
 SURFACE: 769' FNL, 1871' FEL
 BOTTOM HOLE: 50' FSL, 1690' FEL

S. 1/4 COR.
 SEC. 8, T1N, R66W
 FOUND 3 1/4\" ALUM. CAP
 L.S. NO. 25942

NOTES:

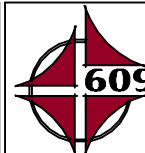
- ▲ INDICATES FOUND SECTION CORNER
- INDICATES CALCULATED CORNER
- BASIS OF BEARING DERIVED FROM COLORADO COORDINATE SYSTEM 1983 NORTH ZONE UNLESS OTHERWISE NOTED.
- ALL MEASURED DISTANCES ARE GRID.
COMBINED SCALE FACTOR: .99972967
- WELL FOOTAGES ARE MEASURED AT RIGHT ANGLES TO THE SECTION LINES.



WELL PAD - GABEL 36N-8HZ

MULTI-WELL PLAN
 GABEL 36C-8HZ, GABEL 36N-8HZ,
 GABEL 15C-8HZ & GABEL 15N-8HZ
 LOCATED IN SECTION 8
 T1N, R66W, 6TH P.M.
 WELD COUNTY, COLORADO

**Kerr-McGee Oil &
 Gas Onshore L.P.**
 1099 18th Street
 Denver, Colorado 80202



CONSULTING, LLC

SHERIDAN OFFICE
 1095 Saberton Avenue
 Sheridan, Wyoming 82801
 Phone 307-674-0609

LOVELAND OFFICE
 1635 Foxtrail Drive, Suite 204
 Loveland, Colorado 80538
 Phone 970-776-4331

DRAFTED BY:	LMO	CHECKED BY:	BJR	SHEET NO:
DATE DRAFTED:	6/30/15	DATE SURVEYED:	6/9/15	1
REVISED:		FILE NAME:	14-133	1 OF 2

MULTI-WELL PLAN

SECTION 8, T1N, R66W

NUMBER	WELL NAME	API NUMBER	LATITUDE (NAD 83)	LONGITUDE (NAD 83)	SURFACE ELEVATION	TOTAL DEPTH
1	WETHINGTON 1-7A	05-123-21318	40.070124	-104.805529	4926.5	8457
2	GREENS FEDERAL 5-8A	05-123-21320	40.070121	-104.805420	4927.3	8261
3	ADAM GABLE GU TRUE 1	05-123-11191	40.070255	-104.805313	4926.5	8070
4	SUTTON FOUNDERS 1	05-123-20771	40.071402	-104.793322	4960.7	8070
5	ADAM GABEL GAS UNIT 1	05-123-08183	40.068482	-104.796937	4947.0	8060
6	ENSOR FEDERAL 9-8	05-123-22741	40.063380	-104.793317	4964.3	8088
7	SCHMIDT FEDERAL 11-8A	05-123-21116	40.061701	-104.806372	4930.7	8311
8	WILLIAM F SCHMIDT GAS UT 1	05-123-08287	40.061166	-104.806004	4932.6	8068

NOTES:

- * INDICATES EXISTING WELLS THAT WERE NOT SURVEYED BUT DERIVED FROM COLORADO OIL AND GAS CONSERVATION COMMISSION (COGCC).

**EXISTING WELL EXHIBIT
SECTION 8, T1N, R66W, 6TH P.M.
WELD COUNTY, COLORADO**

**Kerr-McGee Oil &
Gas Onshore L.P.**
1099 18th Street
Denver, Colorado 80202



CONSULTING, LLC

SHERIDAN OFFICE
1095 Saberton Avenue
Sheridan, Wyoming 82801
Phone 307-674-0609

LOVELAND OFFICE
1635 Foxtrail Drive, Suite 204
Loveland, Colorado 80538
Phone 970-776-4331

DRAFTED BY:	LMO	CHECKED BY:	BJR	SHEET NO:
DATE DRAFTED:	6/30/15	DATE SURVEYED:	6/9/15	2
REVISED:		FILE NAME:	14-133	2 OF 2