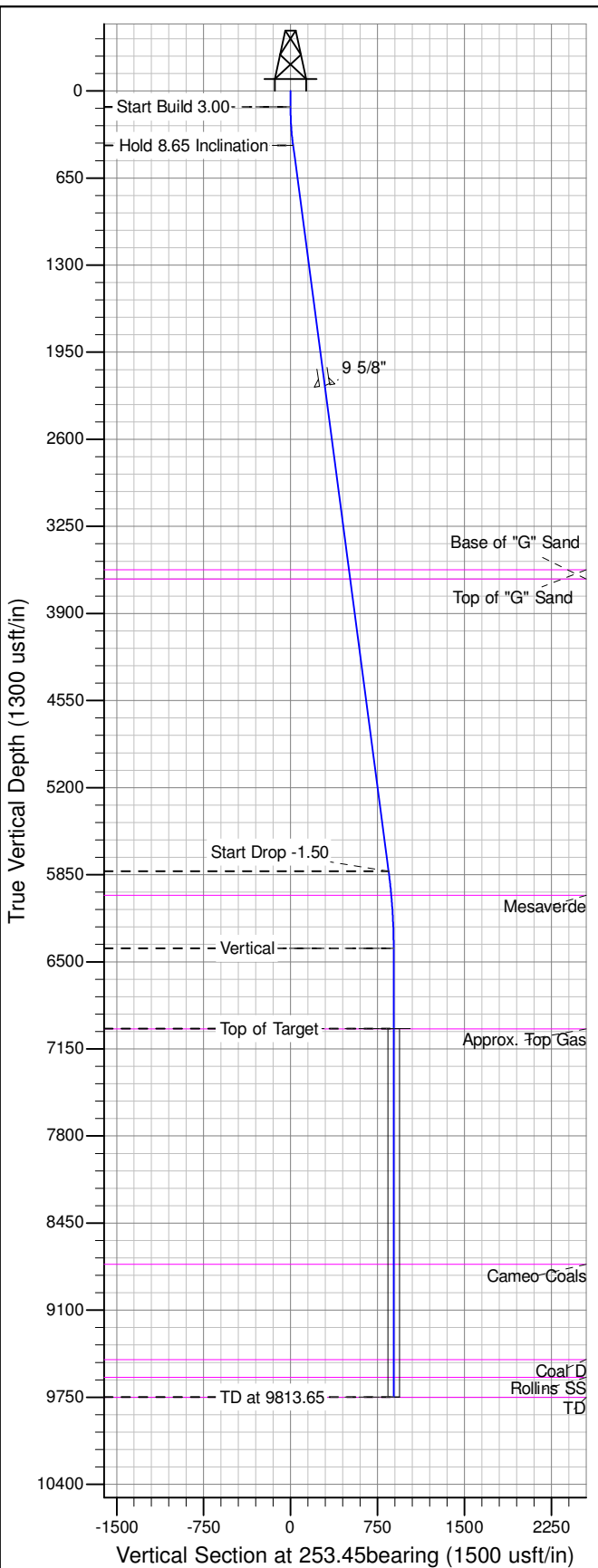
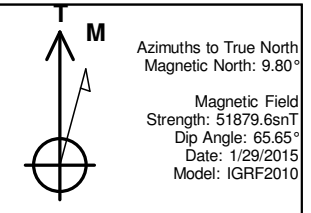
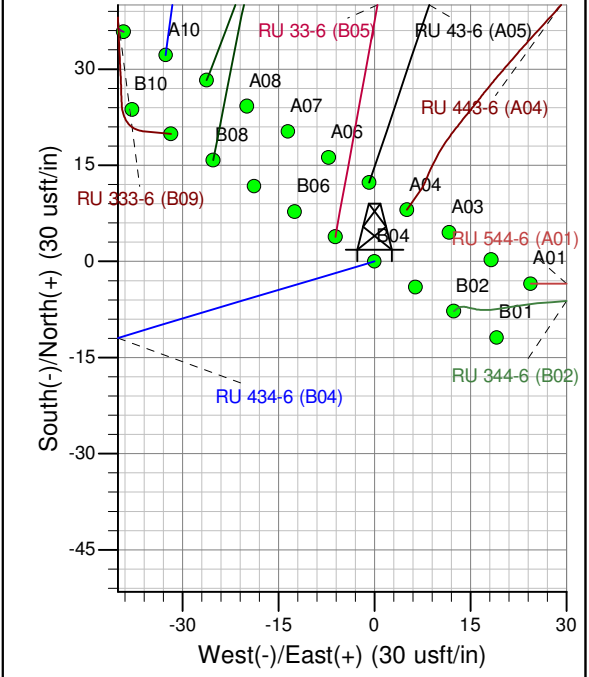
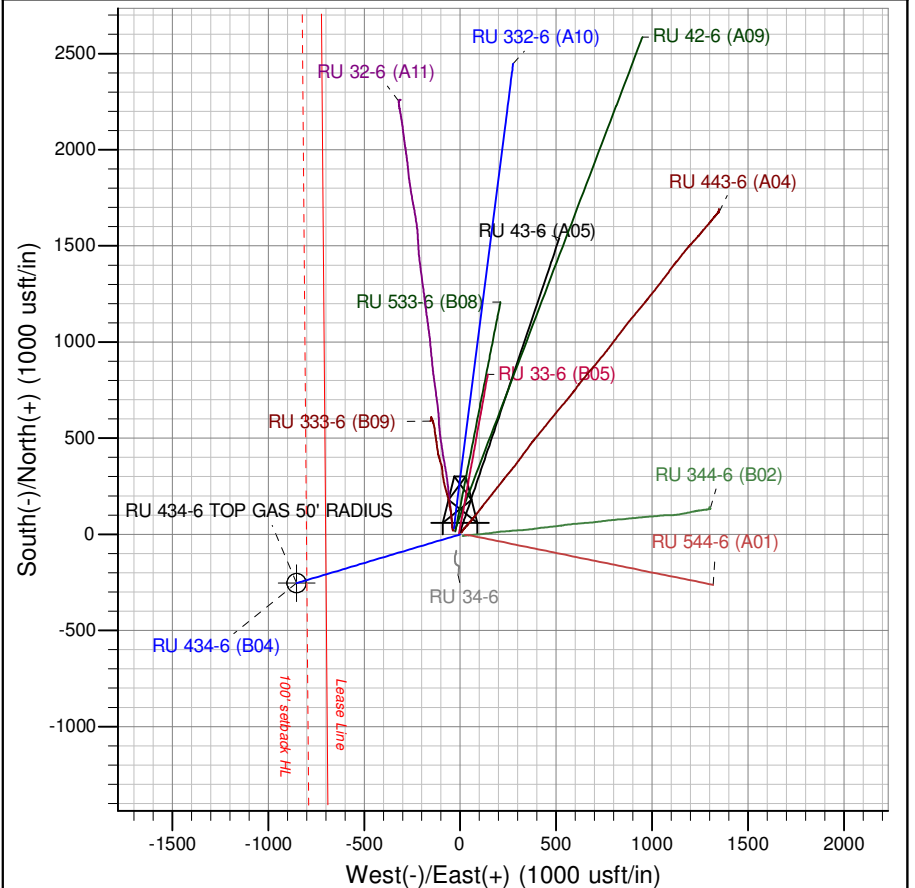




Well Name: RU 434-6
Surface Location: RU 34-6 Pad
North American Datum 1983 , US State Plane 1983 , Colorado Central Zone
Ground Elevation: 7537.00
+N/-S 0.00 +E/-W 0.00 Northing 1603584.40 Easting 2346575.00 Latitude 39.467756 Longitude -107.814786 Slot B04
KB @ 7561.00usft (HP 318)



ANNOTATIONS									
TVD	MD	Inc	Azi	+N/-S	+E/-W	Vsect	Departure	Annotation	
120.00	120.00	0.00	0.00	0.00	0.00	0.00	0.00	0.00	Start Build 3.00
407.36	408.45	8.65	253.45	-6.19	-20.84	21.74	21.74	Hold 8.65	Inclination
5823.28	5886.74	8.65	253.45	-240.93	-810.98	846.01	846.01	Start Drop	-1.50
6398.00	6463.65	0.00	0.00	-253.32	-852.66	889.49	889.49	Vertical	
6998.00	7063.65	0.00	0.00	-253.32	-852.66	889.49	889.49	Top of Target	
9748.00	9813.65	0.00	0.00	-253.32	-852.66	889.49	889.49	TD at 9813.65	



Project: RU 06-07S-093W
Site: RU 34-6 Pad
Well: RU 434-6
Plan #6 5Aug15 sam