

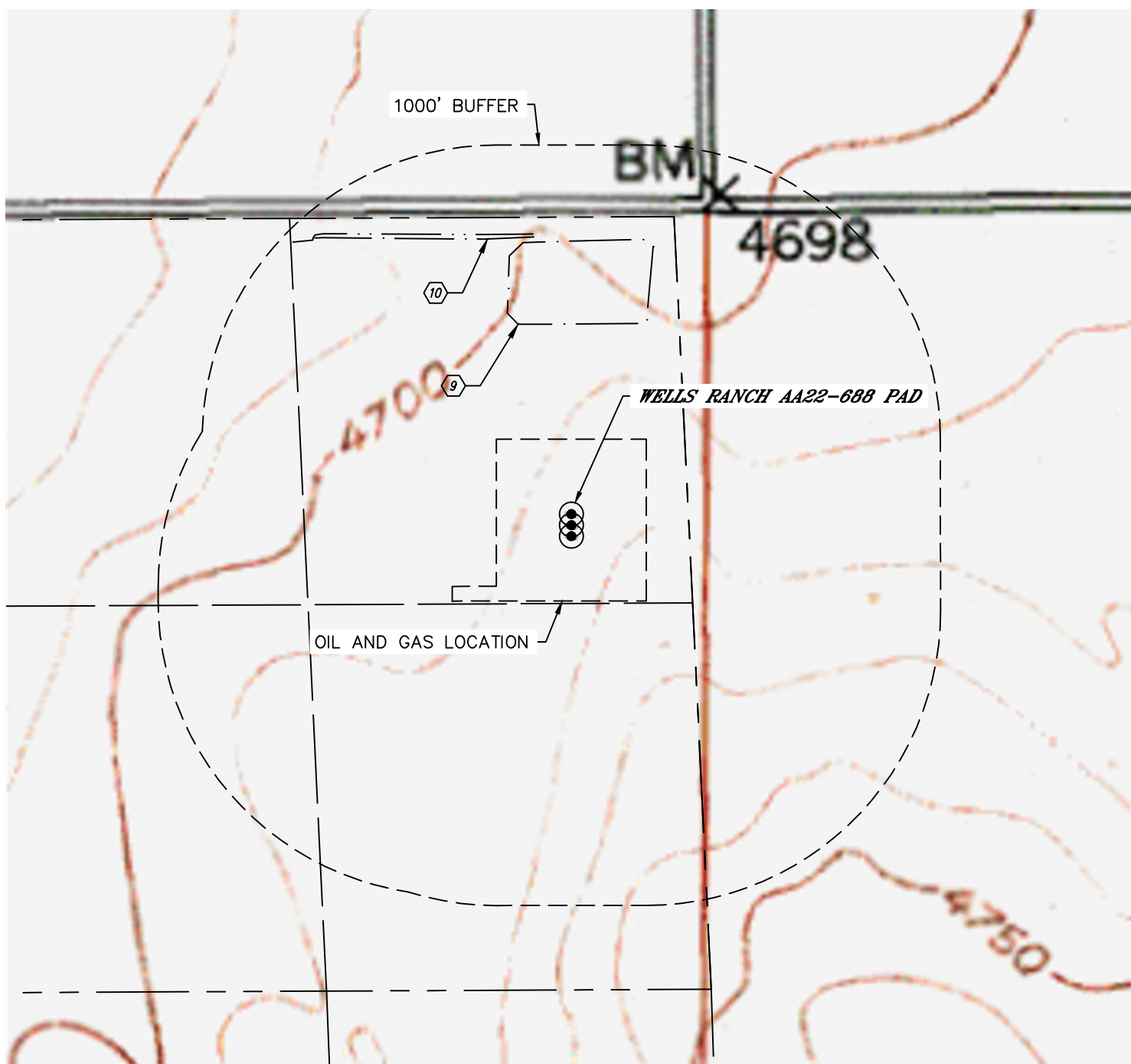


Lat40°, Inc. 6250 W. 10th Street, Unit 2, Greeley, CO 970-515-5294

# HYDROLOGY MAP

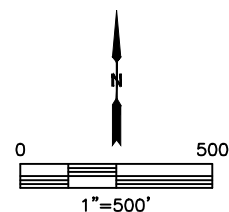
WELLS RANCH AA22-688 PAD

SECTION: 21  
TOWNSHIP: 6N  
RANGE: 63W  
6TH. P.M.  
WELD COUNTY, CO



DISTANCES MEASURED FROM THE EDGE OF THE OIL AND GAS LOCATION.

- 9 DETENTION POND 391' N
- 10 DITCH 682' N



DATE: 1/22/2015  
PROJECT#: 2014014