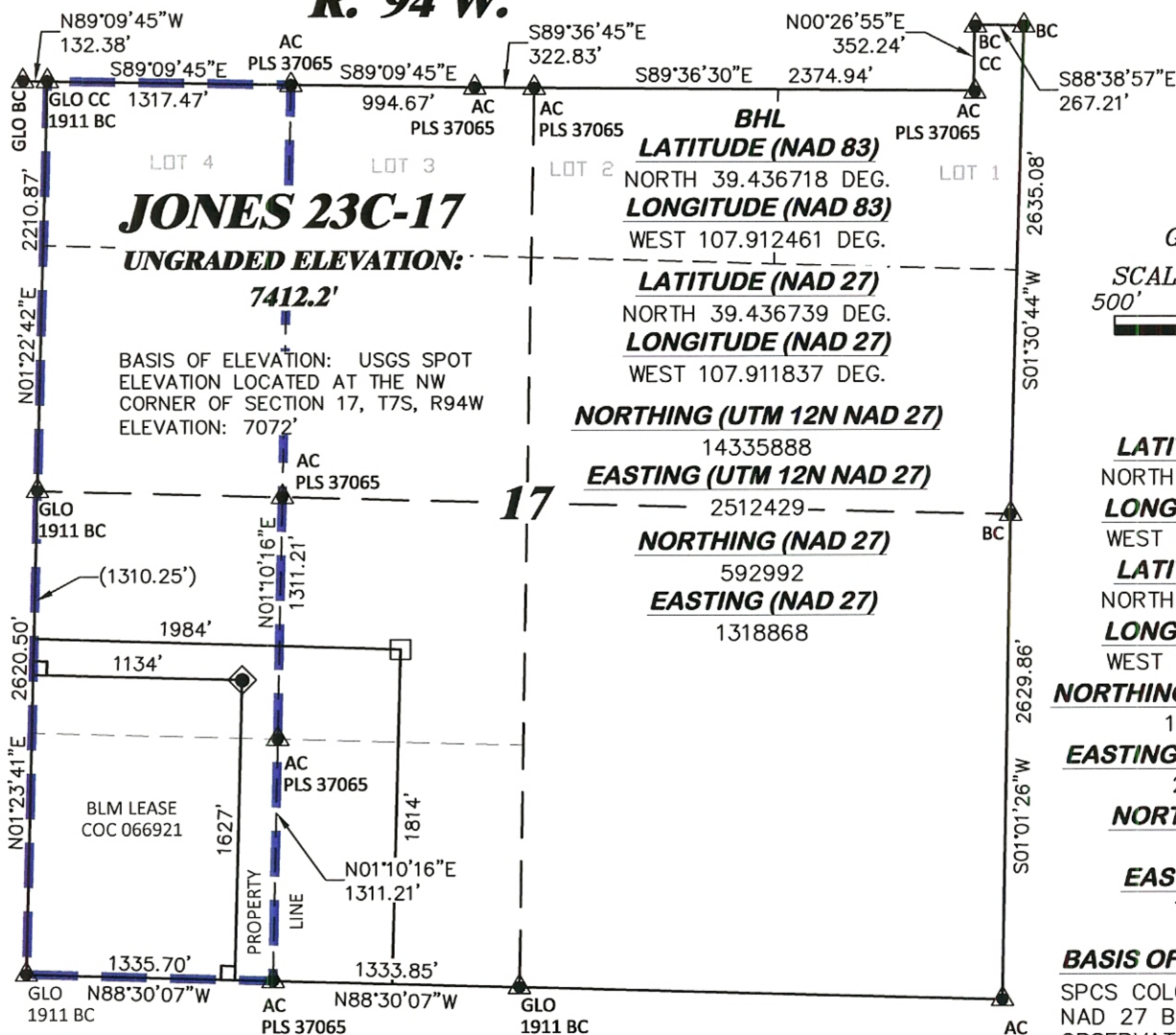


R. 94 W.



JONES 23C-17

UNGRADED ELEVATION:

7412.2'

BASIS OF ELEVATION: USGS SPOT
ELEVATION LOCATED AT THE NW
CORNER OF SECTION 17, T7S, R94W
ELEVATION: 7072'

BHL
LATITUDE (NAD 83)

NORTH 39.436718 DEG.

LONGITUDE (NAD 83)

WEST 107.912461 DEG.

LATITUDE (NAD 27)

NORTH 39.436739 DEG.

LONGITUDE (NAD 27)

WEST 107.911837 DEG.

NORTHING (UTM 12N NAD 27)

14335888

EASTING (UTM 12N NAD 27)

2512429

NORTHING (NAD 27)

592992

EASTING (NAD 27)

1318868



GRID NORTH

SCALE' 1" = 1000'
500' 0 1000'

T. 7 S.

SHL

LATITUDE (NAD 83)

NORTH 39.436203 DEG.

LONGITUDE (NAD 83)

WEST 107.915469 DEG.

LATITUDE (NAD 27)

NORTH 39.436224 DEG.

LONGITUDE (NAD 27)

WEST 107.914844 DEG.

NORTHING (UTM 12N NAD 27)

14335671.37

EASTING (UTM 12N NAD 27)

2511585.57

NORTHING (NAD 27)

592827.17

EASTING (NAD 27)

1318013.73

BASIS OF BEARING/DATUM

SPCS COLORADO CENTRAL
NAD 27 BASED ON GPS
OBSERVATIONS AND OPUS
SOLUTION ON DRG CONTROL
POINT "17-7-94 RESET"
HAVING A POSITION OF:
NAD83(2011)
LAT 39° 26' 10.67" NORTH
LONG 107° 54' 58.98" WEST
NAVD88 ELEVATION: 7356.85'

THE WEST LINE OF THE SW¼
OF SECTION 17, MONUMENTED
BY GLO BC'S AND BEARING
N 01°23'41" E.

NOTES

1. GPS OPERATOR MIKE BRENNAN
OBSERVED A PDOP OF 0.9.
2. ALL GPS OBSERVATIONS ARE IN
COMPLIANCE WITH COGCC RULE No.215.
3. EXISTING IMPROVEMENTS WITHIN 500'
OF LOCATION. SEE EXHIBIT 2D.
4. SURROUNDING SURFACE USE IS
NATIVE BRUSH, NON CROP RANGELAND.

LEGEND

- ◆ WELL LOCATION
- APPROX. BHL
- └ DENOTES 90° TIE
- ▲ PREVIOUSLY
FOUND MONUMENT
- LEASE LINE

SURVEYOR'S STATEMENT

I, RICHARD A BULLEN JR., AN EMPLOYEE AND AGENT ON BEHALF OF D.R. GRIFFIN & ASSOCIATES, INC. STATE THE PLAT HEREON IS A CORRECT REPRESENTATION OF A SURVEY MADE UNDER MY SUPERVISION ON THE 15th DAY OF APRIL, 2015 OF THE SHOWN JONES 23C-17 AND THAT THE LOCATION HAS BEEN STAKED ON THE GROUND.

Notice: In accordance with Colorado State Law, any legal action based upon any defect in this survey plat must commence within three (3) years after first discovery of such defect. In no event, may any action based upon any defect in this survey plat be commenced more than ten (10) years from the date of certification shown hereon.

17L-794 PAD

COLORADO REGISTERED
PROFESSIONAL SURVEYOR
RICHARD A. BULLEN JR.
5/15/15
28647
RICHARD A. BULLEN JR.
COLORADO PLS. No. 28647



DRG RIFFIN & ASSOCIATES, INC.
1414 ELK ST., ROCK SPRINGS, WY 82901

(307) 362-5028

DRAWN: 4/16/2015 - TCM

SCALE: 1" = 1000'

REVISED: 5/15/2015 - DEH

DRG JOB No. 20793

REVISED WELL/PAD NAMES

EXHIBIT 1G

PLAT OF DRILLING LOCATION IN
NWSW, SECTION 17, FOR
CAERUS OIL & GAS

1627 F/SL, & 1134 F/WL, SECTION 17,
T. 7 S., R. 94 W., 6TH P.M.,
GARFIELD COUNTY, COLORADO