

# **EXTRACTION OIL & GAS**

**WELD COUNTY, COLORADO (NAD 83)**

**NW SW SEC. 5 T2N R68W 6th P.M.**

**FAIRVIEW 11**

**ORIGINAL WELLBORE**

**10 August, 2015**

**Plan: PROPOSAL #3**

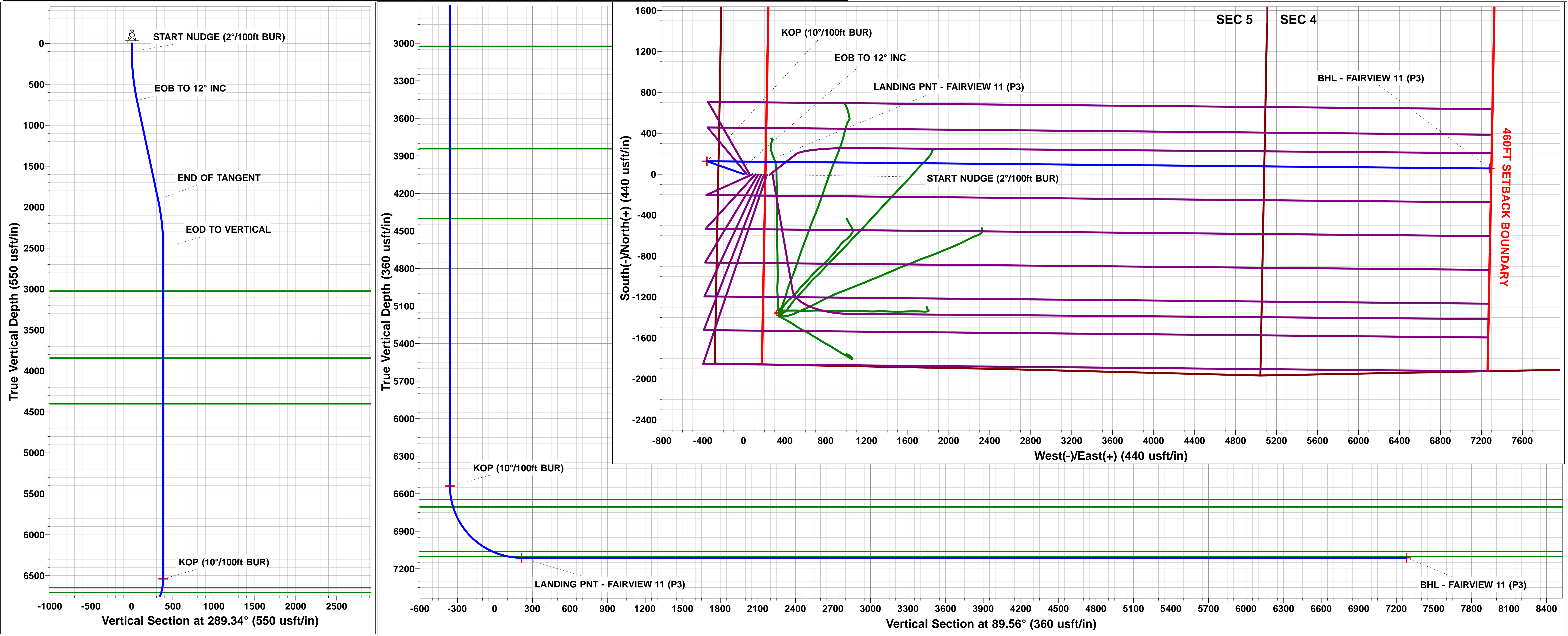
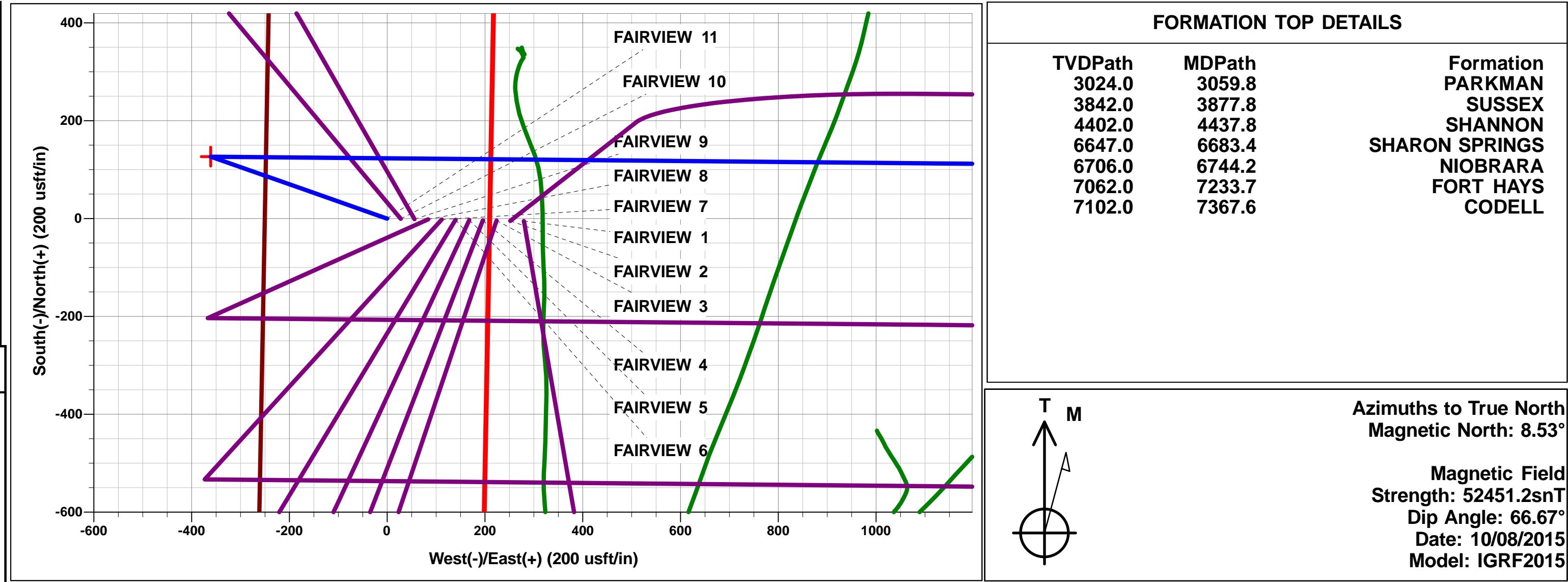




Project: WELD COUNTY, COLORADO (NAD 83)  
Site: NW SW SEC. 5 T2N R68W 6th P.M.  
Well: FAIRVIEW 11  
Wellbore: ORIGINAL WELLBORE  
Design: PROPOSAL #3

ANNOTATIONS										
TVD	MD	Inc	Azi	+N/-S	+E/-W	VSect	Dep	Annotation		
100.0	100.0	0.00	0.00	0.0	0.0	0.0	0.0	START NUDGE (2°/100ft BUR)		
695.7	700.1	12.00	289.34	20.7	-59.1	-58.9	62.6	EOB TO 12° INC		
1905.3	1936.7	12.00	289.34	105.9	-301.7	-300.9	319.8	END OF TANGENT		
2501.0	2536.8	0.00	0.00	126.6	-360.8	-359.8	382.4	EOD TO VERTICAL		
6539.0	6574.8	0.00	0.00	126.6	-360.8	-359.8	382.4	KOP (10°/100ft BUR)		
7112.0	7474.8	89.99	90.53	121.3	212.1	213.0	955.3	LANDING PNT - FAIRVIEW 11 (P3)		
7112.0	14543.8	90.00	90.53	56.1	7280.8	7281.0	8024.3	BHL - FAIRVIEW 11 (P3)		

WELLBORE TARGET DETAILS (LAT/LONG)					
Name	TVD	+N/-S	+E/-W	Latitude	Longitude
KOP - FAIRVIEW 11 (P3)	6539.0	126.6	-360.8	40.166117	-105.036959
LANDING PNT - FAIRVIEW 11 (P3)	7112.0	121.3	212.1	40.166103	-105.034909
BHL - FAIRVIEW 11 (P3)	7112.0	56.1	7280.8	40.165921	-105.009617



# Planning Report



<b>Database:</b>	EDM 5000.1 Single User Db	<b>Local Co-ordinate Reference:</b>	Well FAIRVIEW 11
<b>Company:</b>	EXTRACTION OIL & GAS	<b>TVD Reference:</b>	KB-EST @ 4964.0usft
<b>Project:</b>	WELD COUNTY, COLORADO (NAD 83)	<b>MD Reference:</b>	KB-EST @ 4964.0usft
<b>Site:</b>	NW SW SEC. 5 T2N R68W 6th P.M.	<b>North Reference:</b>	True
<b>Well:</b>	FAIRVIEW 11	<b>Survey Calculation Method:</b>	Minimum Curvature
<b>Wellbore:</b>	ORIGINAL WELLBORE		
<b>Design:</b>	PROPOSAL #3		

<b>Project</b>	WELD COUNTY, COLORADO (NAD 83)		
<b>Map System:</b>	US State Plane 1983	<b>System Datum:</b>	Mean Sea Level
<b>Geo Datum:</b>	North American Datum 1983		
<b>Map Zone:</b>	Colorado Northern Zone		Using geodetic scale factor

<b>Site</b>	NW SW SEC. 5 T2N R68W 6th P.M.		
<b>Site Position:</b>		<b>Northing:</b>	1,303,569.20 usft
<b>From:</b>	Lat/Long	<b>Easting:</b>	3,130,047.26 usft
<b>Position Uncertainty:</b>	0.0 usft	<b>Slot Radius:</b>	1.10000ft
		<b>Latitude:</b>	40.165756
		<b>Longitude:</b>	-105.034667
		<b>Grid Convergence:</b>	0.30 °

Well	FAIRVIEW 11					
Well Position	+N/-S	5.1 usft	Northing:	1,303,572.82 usfi	Latitude:	40.165770
	+E/-W	-279.8 usft	Easting:	3,129,767.48 usfi	Longitude:	-105.035668
Position Uncertainty		0.0 usft	Wellhead Elevation:	usfi	Ground Level:	4,948.0 usft

<b>Wellbore</b>	ORIGINAL WELLBORE				
<b>Magnetics</b>	<b>Model Name</b>	<b>Sample Date</b>	<b>Declination (°)</b>	<b>Dip Angle (°)</b>	<b>Field Strength (nT)</b>
	IGRF2015	10/08/2015	8.53	66.67	52,451

<b>Design</b>	PROPOSAL #3				
<b>Audit Notes:</b>					
<b>Version:</b>	<b>Phase:</b>	PROTOTYPE	<b>Tie On Depth:</b>	0.0	
<b>Vertical Section:</b>	<b>Depth From (TVD) (usft)</b>	<b>+N/-S (usft)</b>	<b>+E/-W (usft)</b>	<b>Direction (°)</b>	
	7,112.0	0.0	0.0	89.56	

<b>Plan Sections</b>											
MD (usft)	Inc (°)	Azi (°)	Vertical Depth	SS (usft)	+N/-S (usft)	+E/-W (usft)	Dogleg Rate (°/100usf)	Build Rate (°/100usf)	Turn Rate (°/100usf)	TFO (°)	Target
0.0	0.00	0.00	0.0	-4,964.0	0.0	0.0	0.00	0.00	0.00	0.00	
100.0	0.00	0.00	100.0	-4,864.0	0.0	0.0	0.00	0.00	0.00	0.00	
700.1	12.00	289.34	695.7	-4,268.3	20.7	-59.1	2.00	2.00	0.00	289.34	
1,936.7	12.00	289.34	1,905.3	-3,058.7	105.9	-301.7	0.00	0.00	0.00	0.00	
2,536.8	0.00	0.00	2,501.0	-2,463.0	126.6	-360.8	2.00	-2.00	0.00	180.00	
6,574.8	0.00	0.00	6,539.0	1,575.0	126.6	-360.8	0.00	0.00	0.00	0.00	KOP - FAIRVIEW 1
7,474.8	90.00	90.53	7,112.0	2,148.0	121.3	212.1	10.00	10.00	10.06	90.53	LANDING PNT - FAIRVIEW 1
14,543.8	90.00	90.53	7,112.0	2,148.0	56.1	7,280.8	0.00	0.00	0.00	11.69	BHL - FAIRVIEW 1

## Planning Report



<b>Database:</b>	EDM 5000.1 Single User Db	<b>Local Co-ordinate Reference:</b>	Well FAIRVIEW 11
<b>Company:</b>	EXTRACTION OIL & GAS	<b>TVD Reference:</b>	KB-EST @ 4964.0usft
<b>Project:</b>	WELD COUNTY, COLORADO (NAD 83)	<b>MD Reference:</b>	KB-EST @ 4964.0usft
<b>Site:</b>	NW SW SEC. 5 T2N R68W 6th P.M.	<b>North Reference:</b>	True
<b>Well:</b>	FAIRVIEW 11	<b>Survey Calculation Method:</b>	Minimum Curvature
<b>Wellbore:</b>	ORIGINAL WELLBORE		
<b>Design:</b>	PROPOSAL #3		

## Planned Survey

MD (usft)	Inc (°)	Azi (°)	TVD (usft)	SS (usft)	+N/-S (usft)	+E/-W (usft)	Vertical Section (usft)	Dogleg Rate (°/100usft)	Build Rate (°/100usft)	Turn Rate (°/100usft)
0.0	0.00	0.00	0.0	4,964.00	0.0	0.0	0.0	0.00	0.00	0.00
<b>START NUDGE (2°/100ft BUR)</b>										
100.0	0.00	0.00	100.0	4,864.00	0.0	0.0	0.0	0.00	0.00	0.00
200.0	2.00	289.34	200.0	4,764.02	0.6	-1.6	-1.6	2.00	2.00	0.00
300.0	4.00	289.34	299.8	4,664.16	2.3	-6.6	-6.6	2.00	2.00	0.00
400.0	6.00	289.34	399.5	4,564.55	5.2	-14.8	-14.8	2.00	2.00	0.00
500.0	8.00	289.34	498.7	4,465.30	9.2	-26.3	-26.2	2.00	2.00	0.00
600.0	10.00	289.34	597.5	4,366.53	14.4	-41.1	-41.0	2.00	2.00	0.00
700.0	12.00	289.34	695.6	4,268.38	20.7	-59.1	-58.9	2.00	2.00	0.00
<b>EOB TO 12° INC</b>										
700.1	12.00	289.34	695.7	4,268.28	20.7	-59.1	-58.9	1.52	1.52	0.00
800.0	12.00	289.34	793.4	4,170.56	27.6	-78.7	-78.5	0.00	0.00	0.00
900.0	12.00	289.34	891.3	4,072.75	34.5	-98.3	-98.0	0.00	0.00	0.00
1,000.0	12.00	289.34	989.1	3,974.93	41.4	-117.9	-117.6	0.00	0.00	0.00
1,100.0	12.00	289.34	1,086.9	3,877.12	48.3	-137.6	-137.2	0.00	0.00	0.00
1,200.0	12.00	289.34	1,184.7	3,779.31	55.2	-157.2	-156.7	0.00	0.00	0.00
1,300.0	12.00	289.34	1,282.5	3,681.49	62.0	-176.8	-176.3	0.00	0.00	0.00
1,400.0	12.00	289.34	1,380.3	3,583.68	68.9	-196.4	-195.9	0.00	0.00	0.00
1,500.0	12.00	289.34	1,478.1	3,485.86	75.8	-216.0	-215.4	0.00	0.00	0.00
1,600.0	12.00	289.34	1,576.0	3,388.05	82.7	-235.7	-235.0	0.00	0.00	0.00
1,700.0	12.00	289.34	1,673.8	3,290.23	89.6	-255.3	-254.6	0.00	0.00	0.00
1,800.0	12.00	289.34	1,771.6	3,192.42	96.5	-274.9	-274.2	0.00	0.00	0.00
1,900.0	12.00	289.34	1,869.4	3,094.61	103.3	-294.5	-293.7	0.00	0.00	0.00
<b>END OF TANGENT</b>										
1,936.7	12.00	289.34	1,905.3	3,058.71	105.9	-301.7	-300.9	0.00	0.00	0.00
2,000.0	10.74	289.34	1,967.3	2,996.65	110.0	-313.5	-312.6	2.00	-2.00	0.00
2,100.0	8.74	289.34	2,065.9	2,898.10	115.6	-329.5	-328.6	2.00	-2.00	0.00
2,200.0	6.74	289.34	2,165.0	2,799.01	120.1	-342.2	-341.2	2.00	-2.00	0.00
2,300.0	4.74	289.34	2,264.5	2,699.52	123.4	-351.6	-350.6	2.00	-2.00	0.00
2,400.0	2.74	289.34	2,364.3	2,599.74	125.5	-357.7	-356.8	2.00	-2.00	0.00
2,500.0	0.74	289.34	2,464.2	2,499.79	126.5	-360.6	-359.6	2.00	-2.00	0.00
<b>EOD TO VERTICAL</b>										
2,536.8	0.00	0.00	2,501.0	2,462.99	126.6	-360.8	-359.8	2.00	-2.00	0.00
2,600.0	0.00	0.00	2,564.2	2,399.79	126.6	-360.8	-359.8	0.00	0.00	0.00
2,700.0	0.00	0.00	2,664.2	2,299.79	126.6	-360.8	-359.8	0.00	0.00	0.00
2,800.0	0.00	0.00	2,764.2	2,199.79	126.6	-360.8	-359.8	0.00	0.00	0.00
2,900.0	0.00	0.00	2,864.2	2,099.79	126.6	-360.8	-359.8	0.00	0.00	0.00
3,000.0	0.00	0.00	2,964.2	1,999.79	126.6	-360.8	-359.8	0.00	0.00	0.00
<b>PARKMAN</b>										
3,059.8	0.00	0.00	3,024.0	1,940.00	126.6	-360.8	-359.8	0.00	0.00	0.00
3,100.0	0.00	0.00	3,064.2	1,899.79	126.6	-360.8	-359.8	0.00	0.00	0.00
3,200.0	0.00	0.00	3,164.2	1,799.79	126.6	-360.8	-359.8	0.00	0.00	0.00
3,300.0	0.00	0.00	3,264.2	1,699.79	126.6	-360.8	-359.8	0.00	0.00	0.00
3,400.0	0.00	0.00	3,364.2	1,599.79	126.6	-360.8	-359.8	0.00	0.00	0.00
3,500.0	0.00	0.00	3,464.2	1,499.79	126.6	-360.8	-359.8	0.00	0.00	0.00
3,600.0	0.00	0.00	3,564.2	1,399.79	126.6	-360.8	-359.8	0.00	0.00	0.00
3,700.0	0.00	0.00	3,664.2	1,299.79	126.6	-360.8	-359.8	0.00	0.00	0.00
3,800.0	0.00	0.00	3,764.2	1,199.79	126.6	-360.8	-359.8	0.00	0.00	0.00
<b>SUSSEX</b>										
3,877.8	0.00	0.00	3,842.0	1,122.00	126.6	-360.8	-359.8	0.00	0.00	0.00
3,900.0	0.00	0.00	3,864.2	1,099.79	126.6	-360.8	-359.8	0.00	0.00	0.00
4,000.0	0.00	0.00	3,964.2	999.79	126.6	-360.8	-359.8	0.00	0.00	0.00
4,100.0	0.00	0.00	4,064.2	899.79	126.6	-360.8	-359.8	0.00	0.00	0.00

<b>Database:</b>	EDM 5000.1 Single User Db	<b>Local Co-ordinate Reference:</b>	Well FAIRVIEW 11
<b>Company:</b>	EXTRACTION OIL & GAS	<b>TVD Reference:</b>	KB-EST @ 4964.0usft
<b>Project:</b>	WELD COUNTY, COLORADO (NAD 83)	<b>MD Reference:</b>	KB-EST @ 4964.0usft
<b>Site:</b>	NW SW SEC. 5 T2N R68W 6th P.M.	<b>North Reference:</b>	True
<b>Well:</b>	FAIRVIEW 11	<b>Survey Calculation Method:</b>	Minimum Curvature
<b>Wellbore:</b>	ORIGINAL WELLBORE		
<b>Design:</b>	PROPOSAL #3		

## Planned Survey

MD (usft)	Inc (°)	Azi (°)	TVD (usft)	SS (usft)	+N/-S (usft)	+E/-W (usft)	Vertical Section (usft)	Dogleg Rate (°/100usft)	Build Rate (°/100usft)	Turn Rate (°/100usft)
4,200.0	0.00	0.00	4,164.2	799.79	126.6	-360.8	-359.8	0.00	0.00	0.00
4,300.0	0.00	0.00	4,264.2	699.79	126.6	-360.8	-359.8	0.00	0.00	0.00
4,400.0	0.00	0.00	4,364.2	599.79	126.6	-360.8	-359.8	0.00	0.00	0.00
<b>SHANNON</b>										
<b>4,437.8</b>	<b>0.00</b>	<b>0.00</b>	<b>4,402.0</b>	<b>562.00</b>	<b>126.6</b>	<b>-360.8</b>	<b>-359.8</b>	<b>0.00</b>	<b>0.00</b>	<b>0.00</b>
4,500.0	0.00	0.00	4,464.2	499.79	126.6	-360.8	-359.8	0.00	0.00	0.00
4,600.0	0.00	0.00	4,564.2	399.79	126.6	-360.8	-359.8	0.00	0.00	0.00
4,700.0	0.00	0.00	4,664.2	299.79	126.6	-360.8	-359.8	0.00	0.00	0.00
4,800.0	0.00	0.00	4,764.2	199.79	126.6	-360.8	-359.8	0.00	0.00	0.00
4,900.0	0.00	0.00	4,864.2	99.79	126.6	-360.8	-359.8	0.00	0.00	0.00
5,000.0	0.00	0.00	4,964.2	-0.21	126.6	-360.8	-359.8	0.00	0.00	0.00
5,100.0	0.00	0.00	5,064.2	-100.21	126.6	-360.8	-359.8	0.00	0.00	0.00
5,200.0	0.00	0.00	5,164.2	-200.21	126.6	-360.8	-359.8	0.00	0.00	0.00
5,300.0	0.00	0.00	5,264.2	-300.21	126.6	-360.8	-359.8	0.00	0.00	0.00
5,400.0	0.00	0.00	5,364.2	-400.21	126.6	-360.8	-359.8	0.00	0.00	0.00
5,500.0	0.00	0.00	5,464.2	-500.21	126.6	-360.8	-359.8	0.00	0.00	0.00
5,600.0	0.00	0.00	5,564.2	-600.21	126.6	-360.8	-359.8	0.00	0.00	0.00
5,700.0	0.00	0.00	5,664.2	-700.21	126.6	-360.8	-359.8	0.00	0.00	0.00
5,800.0	0.00	0.00	5,764.2	-800.21	126.6	-360.8	-359.8	0.00	0.00	0.00
5,900.0	0.00	0.00	5,864.2	-900.21	126.6	-360.8	-359.8	0.00	0.00	0.00
6,000.0	0.00	0.00	5,964.2	-1,000.21	126.6	-360.8	-359.8	0.00	0.00	0.00
6,100.0	0.00	0.00	6,064.2	-1,100.21	126.6	-360.8	-359.8	0.00	0.00	0.00
6,200.0	0.00	0.00	6,164.2	-1,200.21	126.6	-360.8	-359.8	0.00	0.00	0.00
6,300.0	0.00	0.00	6,264.2	-1,300.21	126.6	-360.8	-359.8	0.00	0.00	0.00
6,400.0	0.00	0.00	6,364.2	-1,400.21	126.6	-360.8	-359.8	0.00	0.00	0.00
6,500.0	0.00	0.00	6,464.2	-1,500.21	126.6	-360.8	-359.8	0.00	0.00	0.00
<b>KOP (10°/100ft BUR)</b>										
<b>6,574.8</b>	<b>0.00</b>	<b>0.00</b>	<b>6,539.0</b>	<b>-1,575.01</b>	<b>126.6</b>	<b>-360.8</b>	<b>-359.8</b>	<b>0.00</b>	<b>0.00</b>	<b>0.00</b>
6,600.0	2.52	90.53	6,564.2	-1,600.20	126.6	-360.3	-359.3	10.00	10.00	0.00
<b>SHARON SPRINGS</b>										
<b>6,683.4</b>	<b>10.86</b>	<b>90.53</b>	<b>6,647.0</b>	<b>-1,683.00</b>	<b>126.5</b>	<b>-350.5</b>	<b>-349.6</b>	<b>10.00</b>	<b>10.00</b>	<b>0.00</b>
6,700.0	12.52	90.53	6,663.2	-1,699.22	126.5	-347.2	-346.2	10.00	10.00	0.00
<b>NIOBARA</b>										
<b>6,744.2</b>	<b>16.94</b>	<b>90.53</b>	<b>6,706.0</b>	<b>-1,742.00</b>	<b>126.4</b>	<b>-335.9</b>	<b>-335.0</b>	<b>10.00</b>	<b>10.00</b>	<b>0.00</b>
6,800.0	22.52	90.53	6,758.5	-1,794.46	126.2	-317.1	-316.1	10.00	10.00	0.00
6,900.0	32.52	90.53	6,847.0	-1,883.03	125.8	-271.0	-270.0	10.00	10.00	0.00
7,000.0	42.52	90.53	6,926.2	-1,962.25	125.2	-210.2	-209.2	10.00	10.00	0.00
7,100.0	52.52	90.53	6,993.7	-2,029.70	124.5	-136.5	-135.5	10.00	10.00	0.00
7,200.0	62.52	90.53	7,047.3	-2,083.33	123.8	-52.3	-51.3	10.00	10.00	0.00
<b>FORT HAYS</b>										
<b>7,233.7</b>	<b>65.89</b>	<b>90.53</b>	<b>7,062.0</b>	<b>-2,098.00</b>	<b>123.5</b>	<b>-21.9</b>	<b>-21.0</b>	<b>10.00</b>	<b>10.00</b>	<b>0.00</b>
7,300.0	72.52	90.53	7,085.5	-2,121.53	122.9	40.0	41.0	10.00	10.00	0.00
<b>CODELL</b>										
<b>7,367.6</b>	<b>79.28</b>	<b>90.53</b>	<b>7,102.0</b>	<b>-2,138.00</b>	<b>122.3</b>	<b>105.6</b>	<b>106.5</b>	<b>10.00</b>	<b>10.00</b>	<b>0.00</b>
7,400.0	82.52	90.53	7,107.1	-2,143.12	122.0	137.5	138.5	10.00	10.00	0.00
<b>LANDING PNT - FAIRVIEW 11 (P3)</b>										
<b>7,474.8</b>	<b>89.99</b>	<b>90.53</b>	<b>7,112.0</b>	<b>-2,148.00</b>	<b>121.3</b>	<b>212.1</b>	<b>213.0</b>	<b>10.00</b>	<b>10.00</b>	<b>0.00</b>
7,500.0	90.00	90.53	7,112.0	-2,148.00	121.1	237.3	238.2	0.01	0.01	0.00
7,600.0	90.00	90.53	7,112.0	-2,148.01	120.2	337.3	338.2	0.00	0.00	0.00
7,700.0	90.00	90.53	7,112.0	-2,148.01	119.2	437.3	438.2	0.00	0.00	0.00
7,800.0	90.00	90.53	7,112.0	-2,148.02	118.3	537.3	538.2	0.00	0.00	0.00
7,900.0	90.00	90.53	7,112.0	-2,148.02	117.4	637.3	638.2	0.00	0.00	0.00
8,000.0	90.00	90.53	7,112.0	-2,148.03	116.5	737.3	738.2	0.00	0.00	0.00



# Planning Report



<b>Database:</b>	EDM 5000.1 Single User Db	<b>Local Co-ordinate Reference:</b>	Well FAIRVIEW 11
<b>Company:</b>	EXTRACTION OIL & GAS	<b>TVD Reference:</b>	KB-EST @ 4964.0usft
<b>Project:</b>	WELD COUNTY, COLORADO (NAD 83)	<b>MD Reference:</b>	KB-EST @ 4964.0usft
<b>Site:</b>	NW SW SEC. 5 T2N R68W 6th P.M.	<b>North Reference:</b>	True
<b>Well:</b>	FAIRVIEW 11	<b>Survey Calculation Method:</b>	Minimum Curvature
<b>Wellbore:</b>	ORIGINAL WELLBORE		
<b>Design:</b>	PROPOSAL #3		

Planned Survey										
MD (usft)	Inc (°)	Azi (°)	TVD (usft)	SS (usft)	+N/-S (usft)	+E/-W (usft)	Vertical Section (usft)	Dogleg Rate (°/100usft)	Build Rate (°/100usft)	Turn Rate (°/100usft)
8,100.0	90.00	90.53	7,112.0	-2,148.04	115.6	837.3	838.1	0.00	0.00	0.00
8,200.0	90.00	90.53	7,112.0	-2,148.04	114.6	937.3	938.1	0.00	0.00	0.00
8,300.0	90.00	90.53	7,112.0	-2,148.05	113.7	1,037.3	1,038.1	0.00	0.00	0.00
8,400.0	90.00	90.53	7,112.0	-2,148.05	112.8	1,137.3	1,138.1	0.00	0.00	0.00
8,500.0	90.00	90.53	7,112.1	-2,148.05	111.9	1,237.3	1,238.1	0.00	0.00	0.00
8,600.0	90.00	90.53	7,112.1	-2,148.06	111.0	1,337.3	1,338.1	0.00	0.00	0.00
8,700.0	90.00	90.53	7,112.1	-2,148.06	110.0	1,437.3	1,438.1	0.00	0.00	0.00
8,800.0	90.00	90.53	7,112.1	-2,148.07	109.1	1,537.3	1,538.0	0.00	0.00	0.00
8,900.0	90.00	90.53	7,112.1	-2,148.07	108.2	1,637.2	1,638.0	0.00	0.00	0.00
9,000.0	90.00	90.53	7,112.1	-2,148.07	107.3	1,737.2	1,738.0	0.00	0.00	0.00
9,100.0	90.00	90.53	7,112.1	-2,148.08	106.3	1,837.2	1,838.0	0.00	0.00	0.00
9,200.0	90.00	90.53	7,112.1	-2,148.08	105.4	1,937.2	1,938.0	0.00	0.00	0.00
9,300.0	90.00	90.53	7,112.1	-2,148.08	104.5	2,037.2	2,038.0	0.00	0.00	0.00
9,400.0	90.00	90.53	7,112.1	-2,148.09	103.6	2,137.2	2,138.0	0.00	0.00	0.00
9,500.0	90.00	90.53	7,112.1	-2,148.09	102.7	2,237.2	2,237.9	0.00	0.00	0.00
9,600.0	90.00	90.53	7,112.1	-2,148.09	101.7	2,337.2	2,337.9	0.00	0.00	0.00
9,700.0	90.00	90.53	7,112.1	-2,148.09	100.8	2,437.2	2,437.9	0.00	0.00	0.00
9,800.0	90.00	90.53	7,112.1	-2,148.10	99.9	2,537.2	2,537.9	0.00	0.00	0.00
9,900.0	90.00	90.53	7,112.1	-2,148.10	99.0	2,637.2	2,637.9	0.00	0.00	0.00
10,000.0	90.00	90.53	7,112.1	-2,148.10	98.0	2,737.2	2,737.9	0.00	0.00	0.00
10,100.0	90.00	90.53	7,112.1	-2,148.10	97.1	2,837.2	2,837.9	0.00	0.00	0.00
10,200.0	90.00	90.53	7,112.1	-2,148.10	96.2	2,937.2	2,937.8	0.00	0.00	0.00
10,300.0	90.00	90.53	7,112.1	-2,148.11	95.3	3,037.2	3,037.8	0.00	0.00	0.00
10,400.0	90.00	90.53	7,112.1	-2,148.11	94.4	3,137.2	3,137.8	0.00	0.00	0.00
10,500.0	90.00	90.53	7,112.1	-2,148.11	93.4	3,237.2	3,237.8	0.00	0.00	0.00
10,600.0	90.00	90.53	7,112.1	-2,148.11	92.5	3,337.2	3,337.8	0.00	0.00	0.00
10,700.0	90.00	90.53	7,112.1	-2,148.11	91.6	3,437.2	3,437.8	0.00	0.00	0.00
10,800.0	90.00	90.53	7,112.1	-2,148.11	90.7	3,537.2	3,537.8	0.00	0.00	0.00
10,900.0	90.00	90.53	7,112.1	-2,148.11	89.7	3,637.2	3,637.7	0.00	0.00	0.00
11,000.0	90.00	90.53	7,112.1	-2,148.11	88.8	3,737.2	3,737.7	0.00	0.00	0.00
11,100.0	90.00	90.53	7,112.1	-2,148.11	87.9	3,837.2	3,837.7	0.00	0.00	0.00
11,200.0	90.00	90.53	7,112.1	-2,148.11	87.0	3,937.2	3,937.7	0.00	0.00	0.00
11,300.0	90.00	90.53	7,112.1	-2,148.11	86.0	4,037.1	4,037.7	0.00	0.00	0.00
11,400.0	90.00	90.53	7,112.1	-2,148.11	85.1	4,137.1	4,137.7	0.00	0.00	0.00
11,500.0	90.00	90.53	7,112.1	-2,148.11	84.2	4,237.1	4,237.7	0.00	0.00	0.00
11,600.0	90.00	90.53	7,112.1	-2,148.11	83.3	4,337.1	4,337.6	0.00	0.00	0.00
11,700.0	90.00	90.53	7,112.1	-2,148.11	82.4	4,437.1	4,437.6	0.00	0.00	0.00
11,800.0	90.00	90.53	7,112.1	-2,148.10	81.4	4,537.1	4,537.6	0.00	0.00	0.00
11,900.0	90.00	90.53	7,112.1	-2,148.10	80.5	4,637.1	4,637.6	0.00	0.00	0.00
12,000.0	90.00	90.53	7,112.1	-2,148.10	79.6	4,737.1	4,737.6	0.00	0.00	0.00
12,100.0	90.00	90.53	7,112.1	-2,148.10	78.7	4,837.1	4,837.6	0.00	0.00	0.00
12,200.0	90.00	90.53	7,112.1	-2,148.10	77.7	4,937.1	4,937.6	0.00	0.00	0.00
12,300.0	90.00	90.53	7,112.1	-2,148.10	76.8	5,037.1	5,037.5	0.00	0.00	0.00
12,400.0	90.00	90.53	7,112.1	-2,148.09	75.9	5,137.1	5,137.5	0.00	0.00	0.00
12,500.0	90.00	90.53	7,112.1	-2,148.09	75.0	5,237.1	5,237.5	0.00	0.00	0.00
12,600.0	90.00	90.53	7,112.1	-2,148.09	74.0	5,337.1	5,337.5	0.00	0.00	0.00
12,700.0	90.00	90.53	7,112.1	-2,148.08	73.1	5,437.1	5,437.5	0.00	0.00	0.00
12,800.0	90.00	90.53	7,112.1	-2,148.08	72.2	5,537.1	5,537.5	0.00	0.00	0.00
12,900.0	90.00	90.53	7,112.1	-2,148.08	71.3	5,637.1	5,637.5	0.00	0.00	0.00
13,000.0	90.00	90.53	7,112.1	-2,148.07	70.4	5,737.1	5,737.4	0.00	0.00	0.00
13,100.0	90.00	90.53	7,112.1	-2,148.07	69.4	5,837.1	5,837.4	0.00	0.00	0.00
13,200.0	90.00	90.53	7,112.1	-2,148.07	68.5	5,937.1	5,937.4	0.00	0.00	0.00
13,300.0	90.00	90.53	7,112.1	-2,148.06	67.6	6,037.1	6,037.4	0.00	0.00	0.00
13,400.0	90.00	90.53	7,112.1	-2,148.06	66.7	6,137.1	6,137.4	0.00	0.00	0.00

# Planning Report



<b>Database:</b>	EDM 5000.1 Single User Db	<b>Local Co-ordinate Reference:</b>	Well FAIRVIEW 11
<b>Company:</b>	EXTRACTION OIL & GAS	<b>TVD Reference:</b>	KB-EST @ 4964.0usft
<b>Project:</b>	WELD COUNTY, COLORADO (NAD 83)	<b>MD Reference:</b>	KB-EST @ 4964.0usft
<b>Site:</b>	NW SW SEC. 5 T2N R68W 6th P.M.	<b>North Reference:</b>	True
<b>Well:</b>	FAIRVIEW 11	<b>Survey Calculation Method:</b>	Minimum Curvature
<b>Wellbore:</b>	ORIGINAL WELLBORE		
<b>Design:</b>	PROPOSAL #3		

Planned Survey										
MD (usft)	Inc (°)	Azi (°)	TVD (usft)	SS (usft)	+N/-S (usft)	+E/-W (usft)	Vertical Section (usft)	Dogleg Rate (°/100usft)	Build Rate (°/100usft)	Turn Rate (°/100usft)
13,500.0	90.00	90.53	7,112.1	-2,148.06	65.7	6,237.1	6,237.4	0.00	0.00	0.00
13,600.0	90.00	90.53	7,112.1	-2,148.05	64.8	6,337.0	6,337.4	0.00	0.00	0.00
13,700.0	90.00	90.53	7,112.0	-2,148.05	63.9	6,437.0	6,437.3	0.00	0.00	0.00
13,800.0	90.00	90.53	7,112.0	-2,148.04	63.0	6,537.0	6,537.3	0.00	0.00	0.00
13,900.0	90.00	90.53	7,112.0	-2,148.04	62.0	6,637.0	6,637.3	0.00	0.00	0.00
14,000.0	90.00	90.53	7,112.0	-2,148.03	61.1	6,737.0	6,737.3	0.00	0.00	0.00
14,100.0	90.00	90.53	7,112.0	-2,148.03	60.2	6,837.0	6,837.3	0.00	0.00	0.00
14,200.0	90.00	90.53	7,112.0	-2,148.02	59.3	6,937.0	6,937.3	0.00	0.00	0.00
14,300.0	90.00	90.53	7,112.0	-2,148.01	58.3	7,037.0	7,037.3	0.00	0.00	0.00
14,400.0	90.00	90.53	7,112.0	-2,148.01	57.4	7,137.0	7,137.2	0.00	0.00	0.00
14,500.0	90.00	90.53	7,112.0	-2,148.00	56.5	7,237.0	7,237.2	0.00	0.00	0.00
<b>BHL - FAIRVIEW 11 (P3)</b>										
<b>14,543.8</b>	<b>90.00</b>	<b>90.53</b>	<b>7,112.0</b>	<b>-2,148.00</b>	<b>56.1</b>	<b>7,280.8</b>	<b>7,281.0</b>	<b>0.00</b>	<b>0.00</b>	<b>0.00</b>

Formations						
MD (usft)	TVD (usft)	Name	Lithology	Dip (°)	Dip Direction (°)	
3,059.8	3,024.0	PARKMAN		0.00		
3,877.8	3,842.0	SUSSEX		0.00		
4,437.8	4,402.0	SHANNON		0.00		
6,683.4	6,647.0	SHARON SPRINGS		0.00		
6,744.2	6,706.0	NIOBRARA		0.00		
7,233.7	7,062.0	FORT HAYS		0.00		
7,367.6	7,102.0	CODELL		0.00		

Plan Annotations				
MD (usft)	TVD (usft)	Local Coordinates		Comment
		+N/-S (usft)	+E/-W (usft)	
100.0	100.0	0.0	0.0	START NUDGE (2°/100ft BUR)
700.1	695.7	20.7	-59.1	EOB TO 12° INC
1,936.7	1,905.3	105.9	-301.7	END OF TANGENT
2,536.8	2,501.0	126.6	-360.8	EOD TO VERTICAL
6,574.8	6,539.0	126.6	-360.8	KOP (10°/100ft BUR)
7,474.8	7,112.0	121.3	212.1	LANDING PNT - FAIRVIEW 11 (P3)
14,543.8	7,112.0	56.1	7,280.8	BHL - FAIRVIEW 11 (P3)