

EXTRACTION OIL & GAS

WELD COUNTY, COLORADO (NAD 83)

NW SW SEC. 5 T2N R68W 6th P.M.

FAIRVIEW 10

ORIGINAL WELLBORE

10 August, 2015

Plan: PROPOSAL #3

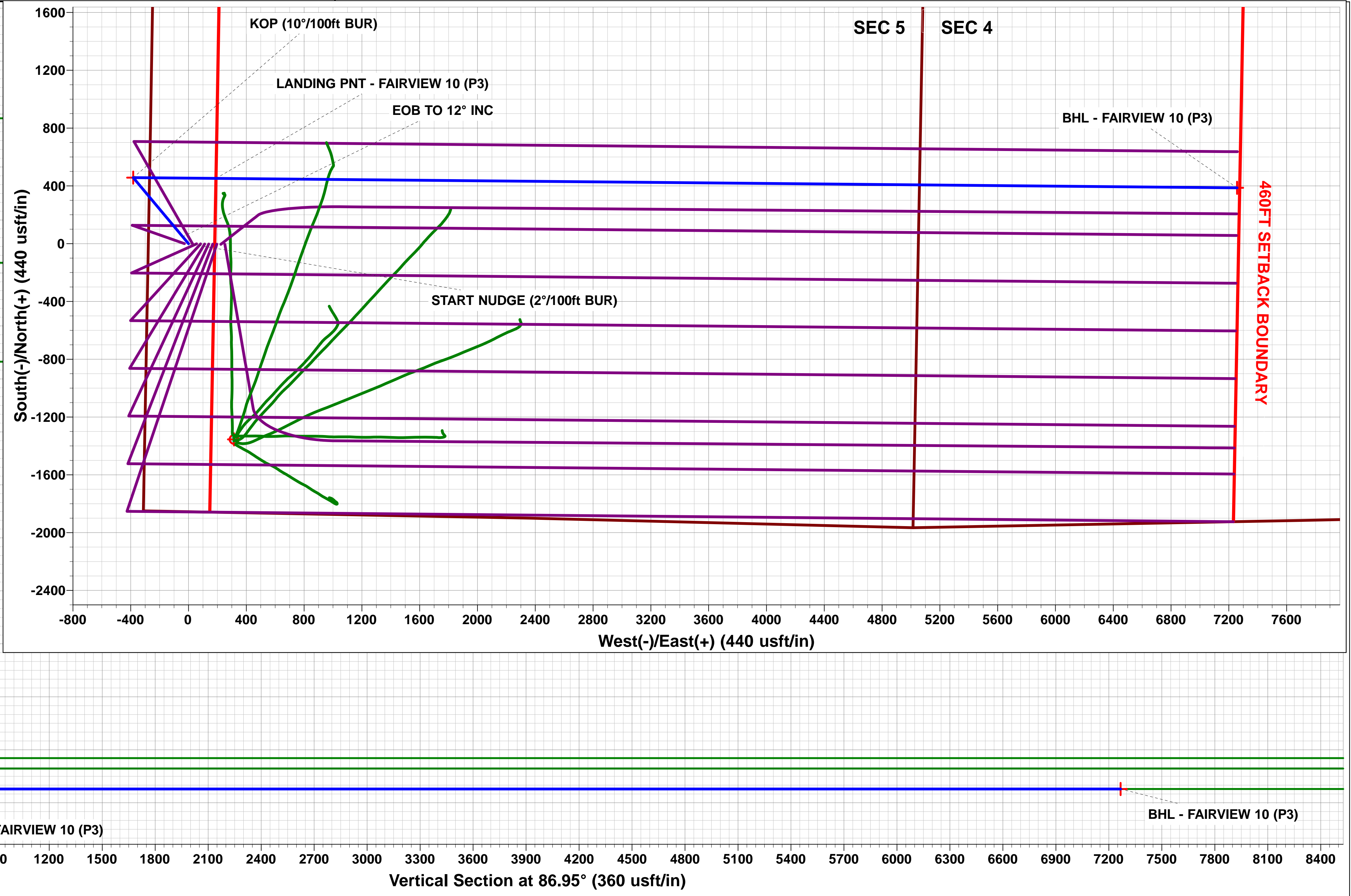
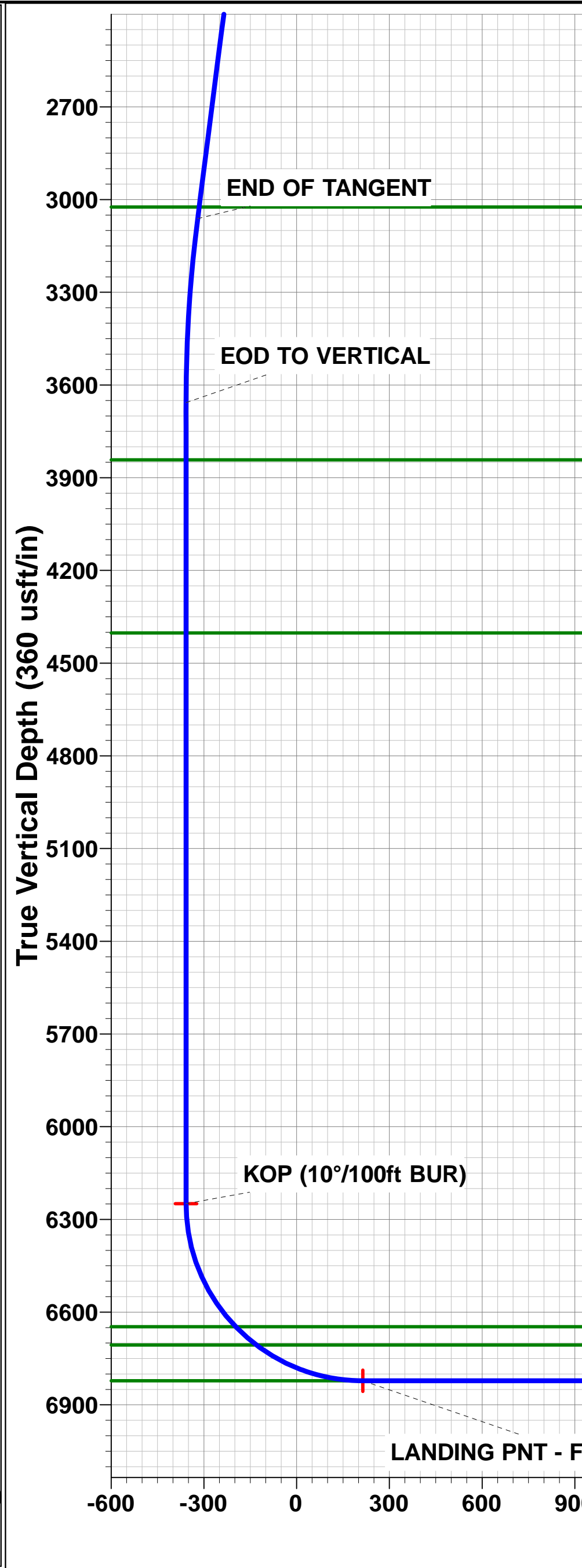
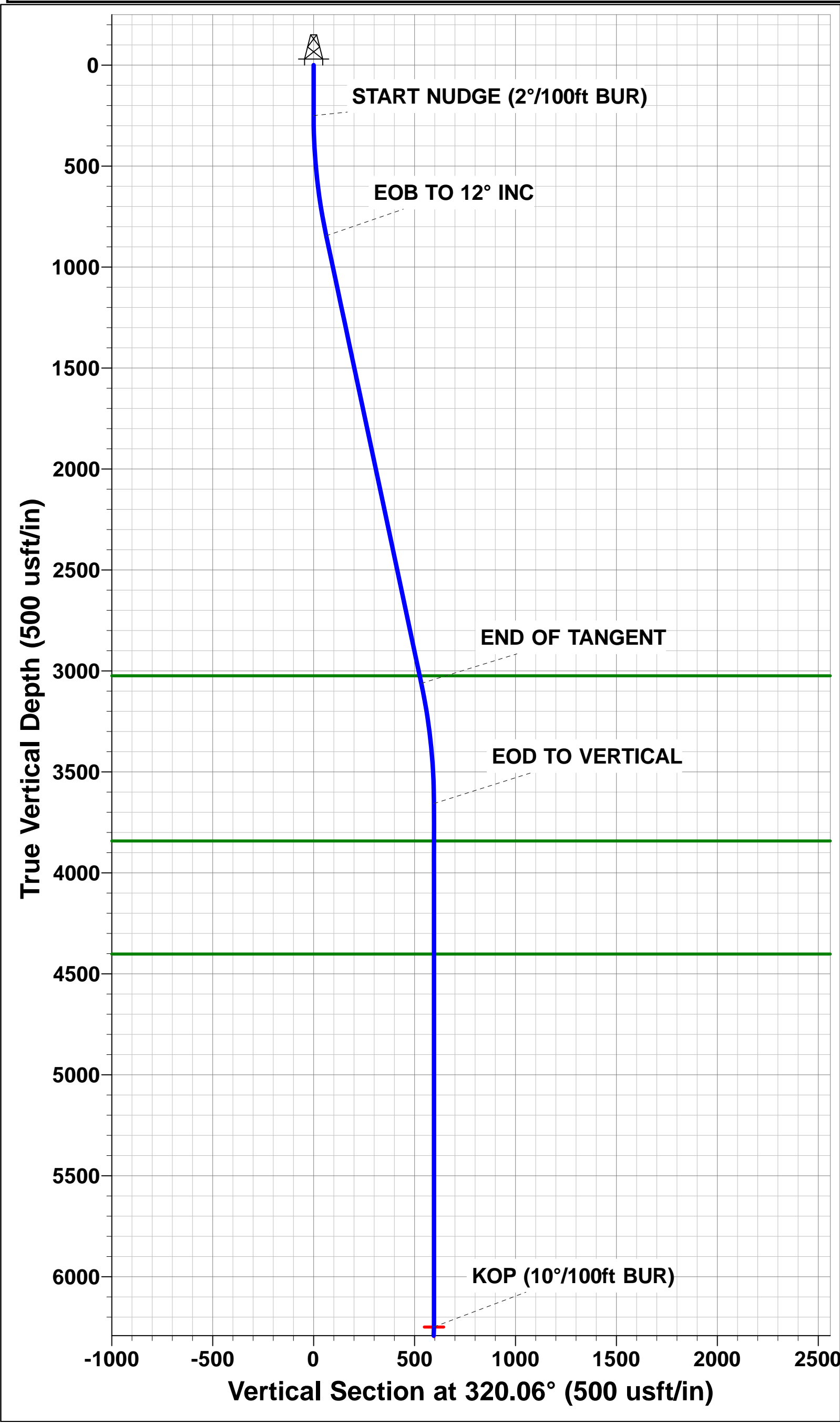
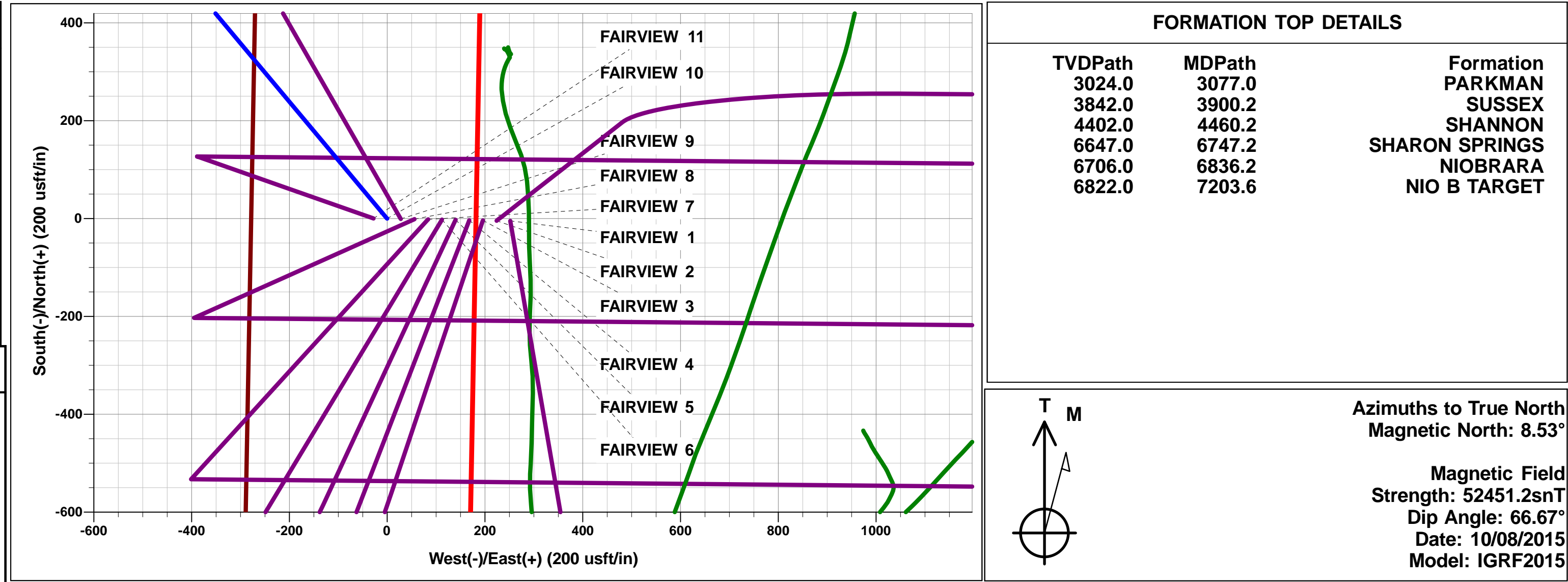




Project: WELD COUNTY, COLORADO (NAD 83)
Site: NW SW SEC. 5 T2N R68W 6th P.M.
Well: FAIRVIEW 10
Wellbore: ORIGINAL WELLBORE
Design: PROPOSAL #3

ANNOTATIONS										
TVD	MD	Inc	Azi	+N/-S	+E/-W	VSect	Dep	Annotation		
250.0	250.0	0.00	0.00	0.0	0.0	0.0	0.0	START NUDGE (2°/100ft BUR)		
845.4	849.8	12.00	320.06	48.0	-40.2	-37.6	62.6	EOB TO 12° INC		
3061.6	3115.4	12.00	320.06	409.0	-342.4	-320.2	533.5	END OF TANGENT		
3657.0	3715.2	0.00	320.06	457.0	-382.6	-357.8	596.0	EOD TO VERTICAL		
6249.0	6307.2	0.00	0.00	457.0	-382.6	-357.8	596.0	KOP (10°/100ft BUR)		
6822.0	7207.2	89.99	90.53	451.7	190.3	214.0	1168.9	LANDING PNT - FAIRVIEW 10 (P3)		
6822.0	14273.6	90.00	90.53	386.5	7256.4	7266.7	8235.3	BHL - FAIRVIEW 10 (P3)		

WELLBORE TARGET DETAILS (LAT/LONG)					
Name	TVD	+N/-S	+E/-W	Latitude	Longitude
KOP - FAIRVIEW 10 (P3)	6249.0	457.0	-382.6	40.167023	-105.036937
LANDING PNT - FAIRVIEW 10 (P3)	6822.0	451.7	190.3	40.167009	-105.034887
BHL - FAIRVIEW 10 (P3)	6822.0	386.5	7256.4	40.166827	-105.009604



Planning Report



Database:	EDM 5000.1 Single User Db	Local Co-ordinate Reference:	Well FAIRVIEW 10
Company:	EXTRACTION OIL & GAS	TVD Reference:	KB-EST @ 4964.0usft
Project:	WELD COUNTY, COLORADO (NAD 83)	MD Reference:	KB-EST @ 4964.0usft
Site:	NW SW SEC. 5 T2N R68W 6th P.M.	North Reference:	True
Well:	FAIRVIEW 10	Survey Calculation Method:	Minimum Curvature
Wellbore:	ORIGINAL WELLBORE		
Design:	PROPOSAL #3		

Project	WELD COUNTY, COLORADO (NAD 83)		
Map System:	US State Plane 1983	System Datum:	Mean Sea Level
Geo Datum:	North American Datum 1983		
Map Zone:	Colorado Northern Zone		Using geodetic scale factor

Site	NW SW SEC. 5 T2N R68W 6th P.M.		
Site Position:		Northing:	1,303,569.20 usft
From:	Lat/Long	Easting:	3,130,047.26 usft
Position Uncertainty:	0.0 usft	Slot Radius:	1.10000 ft
		Latitude:	40.165756
		Longitude:	-105.034667
		Grid Convergence:	0.30 °

Well	FAIRVIEW 10		
Well Position	+N-S	4.7 usft	Northing: 1,303,572.60 usft
	+E-W	-251.8 usft	Easting: 3,129,795.43 usft
Position Uncertainty	0.0 usft	Wellhead Elevation:	usft
		Latitude:	40.165769
		Longitude:	-105.035568
		Ground Level:	4,948.0 usft

Wellbore	ORIGINAL WELLBORE				
Magnetics	Model Name	Sample Date	Declination (°)	Dip Angle (°)	Field Strength (nT)
	IGRF2015	10/08/2015	8.53	66.67	52,451

Design	PROPOSAL #3				
Audit Notes:					
Version:	Phase:	PROTOTYPE	Tie On Depth:	0.0	
Vertical Section:	Depth From (TVD) (usft)	+N-S (usft)	+E-W (usft)	Direction (°)	
	6,822.0	0.0	0.0	86.95	

Plan Sections											
MD (usft)	Inc (°)	Azi (°)	Vertical Depth	SS (usft)	+N-S (usft)	+E-W (usft)	Dogleg Rate (°/100usf)	Build Rate (°/100usf)	Turn Rate (°/100usf)	TFO (°)	Target
0.0	0.00	0.00	0.0	-4,964.0	0.0	0.0	0.00	0.00	0.00	0.00	
250.0	0.00	0.00	250.0	-4,714.0	0.0	0.0	0.00	0.00	0.00	0.00	
849.8	12.00	320.06	845.4	-4,118.6	48.0	-40.2	2.00	2.00	0.00	320.06	
3,115.4	12.00	320.06	3,061.6	-1,902.4	409.0	-342.4	0.00	0.00	0.00	0.00	
3,715.2	0.00	0.00	3,657.0	-1,307.0	457.0	-382.6	2.00	-2.00	0.00	180.00	
6,307.2	0.00	0.00	6,249.0	1,285.0	457.0	-382.6	0.00	0.00	0.00	0.00	KOP - FAIRVIEW 1
7,207.2	90.00	90.53	6,822.0	1,858.0	451.7	190.3	10.00	10.00	10.06	90.53	LANDING PNT - FA
14,273.6	90.00	90.53	6,822.0	1,858.0	386.5	7,256.4	0.00	0.00	0.00	31.58	BHL - FAIRVIEW 11

Database:	EDM 5000.1 Single User Db	Local Co-ordinate Reference:	Well FAIRVIEW 10
Company:	EXTRACTION OIL & GAS	TVD Reference:	KB-EST @ 4964.0usft
Project:	WELD COUNTY, COLORADO (NAD 83)	MD Reference:	KB-EST @ 4964.0usft
Site:	NW SW SEC. 5 T2N R68W 6th P.M.	North Reference:	True
Well:	FAIRVIEW 10	Survey Calculation Method:	Minimum Curvature
Wellbore:	ORIGINAL WELLBORE		
Design:	PROPOSAL #3		

Planned Survey										
MD (usft)	Inc (°)	Azi (°)	TVD (usft)	SS (usft)	+N/-S (usft)	+E/-W (usft)	Vertical Section (usft)	Dogleg Rate (°/100usft)	Build Rate (°/100usft)	Turn Rate (°/100usft)
0.0	0.00	0.00	0.0	4,964.00	0.0	0.0	0.0	0.00	0.00	0.00
100.0	0.00	0.00	100.0	4,864.00	0.0	0.0	0.0	0.00	0.00	0.00
200.0	0.00	0.00	200.0	4,764.00	0.0	0.0	0.0	0.00	0.00	0.00
START NUDGE (2°/100ft BUR)										
250.0	0.00	0.00	250.0	4,714.00	0.0	0.0	0.0	0.00	0.00	0.00
300.0	1.00	320.06	300.0	4,664.00	0.3	-0.3	-0.3	2.00	2.00	0.00
400.0	3.00	320.06	399.9	4,564.07	3.0	-2.5	-2.4	2.00	2.00	0.00
500.0	5.00	320.06	499.7	4,464.32	8.4	-7.0	-6.5	2.00	2.00	0.00
600.0	7.00	320.06	599.1	4,364.87	16.4	-13.7	-12.8	2.00	2.00	0.00
700.0	9.00	320.06	698.2	4,265.85	27.0	-22.6	-21.2	2.00	2.00	0.00
800.0	11.00	320.06	796.6	4,167.37	40.4	-33.8	-31.6	2.00	2.00	0.00
EOB TO 12° INC										
849.8	12.00	320.06	845.4	4,118.57	48.0	-40.2	-37.6	2.00	2.00	0.00
900.0	12.00	320.06	894.5	4,069.47	56.0	-46.9	-43.8	0.00	0.00	0.00
1,000.0	12.00	320.06	992.3	3,971.65	71.9	-60.2	-56.3	0.00	0.00	0.00
1,100.0	12.00	320.06	1,090.2	3,873.84	87.8	-73.5	-68.8	0.00	0.00	0.00
1,200.0	12.00	320.06	1,188.0	3,776.02	103.8	-86.9	-81.2	0.00	0.00	0.00
1,300.0	12.00	320.06	1,285.8	3,678.20	119.7	-100.2	-93.7	0.00	0.00	0.00
1,400.0	12.00	320.06	1,383.6	3,580.39	135.7	-113.6	-106.2	0.00	0.00	0.00
1,500.0	12.00	320.06	1,481.4	3,482.57	151.6	-126.9	-118.7	0.00	0.00	0.00
1,600.0	12.00	320.06	1,579.2	3,384.76	167.5	-140.3	-131.1	0.00	0.00	0.00
1,700.0	12.00	320.06	1,677.1	3,286.94	183.5	-153.6	-143.6	0.00	0.00	0.00
1,800.0	12.00	320.06	1,774.9	3,189.12	199.4	-166.9	-156.1	0.00	0.00	0.00
1,900.0	12.00	320.06	1,872.7	3,091.31	215.3	-180.3	-168.6	0.00	0.00	0.00
2,000.0	12.00	320.06	1,970.5	2,993.49	231.3	-193.6	-181.0	0.00	0.00	0.00
2,100.0	12.00	320.06	2,068.3	2,895.67	247.2	-207.0	-193.5	0.00	0.00	0.00
2,200.0	12.00	320.06	2,166.1	2,797.86	263.1	-220.3	-206.0	0.00	0.00	0.00
2,300.0	12.00	320.06	2,264.0	2,700.04	279.1	-233.7	-218.5	0.00	0.00	0.00
2,400.0	12.00	320.06	2,361.8	2,602.23	295.0	-247.0	-231.0	0.00	0.00	0.00
2,500.0	12.00	320.06	2,459.6	2,504.41	311.0	-260.3	-243.4	0.00	0.00	0.00
2,600.0	12.00	320.06	2,557.4	2,406.59	326.9	-273.7	-255.9	0.00	0.00	0.00
2,700.0	12.00	320.06	2,655.2	2,308.78	342.8	-287.0	-268.4	0.00	0.00	0.00
2,800.0	12.00	320.06	2,753.0	2,210.96	358.8	-300.4	-280.9	0.00	0.00	0.00
2,900.0	12.00	320.06	2,850.9	2,113.15	374.7	-313.7	-293.3	0.00	0.00	0.00
3,000.0	12.00	320.06	2,948.7	2,015.33	390.6	-327.0	-305.8	0.00	0.00	0.00
PARKMAN										
3,077.0	12.00	320.06	3,024.0	1,940.00	402.9	-337.3	-315.4	0.00	0.00	0.00
3,100.0	12.00	320.06	3,046.5	1,917.51	406.6	-340.4	-318.3	0.00	0.00	0.00
END OF TANGENT										
3,115.4	12.00	320.06	3,061.6	1,902.45	409.0	-342.4	-320.2	0.00	0.00	0.00
3,200.0	10.30	320.06	3,144.6	1,819.45	421.6	-352.9	-330.0	2.00	-2.00	0.00
3,300.0	8.30	320.06	3,243.2	1,720.77	434.0	-363.3	-339.7	2.00	-2.00	0.00
3,400.0	6.30	320.06	3,342.4	1,621.59	443.7	-371.5	-347.4	2.00	-2.00	0.00
3,500.0	4.30	320.06	3,442.0	1,522.02	450.8	-377.4	-352.9	2.00	-2.00	0.00
3,600.0	2.30	320.06	3,541.8	1,422.19	455.2	-381.1	-356.4	2.00	-2.00	0.00
3,700.0	0.30	320.06	3,641.8	1,322.22	457.0	-382.6	-357.7	2.00	-2.00	0.00
EOD TO VERTICAL										
3,715.2	0.00	320.06	3,657.0	1,307.02	457.0	-382.6	-357.8	2.00	-2.00	0.00
3,800.0	0.00	0.00	3,741.8	1,222.22	457.0	-382.6	-357.8	0.00	0.00	0.00
3,900.0	0.00	0.00	3,841.8	1,122.22	457.0	-382.6	-357.8	0.00	0.00	0.00
SUSSEX										
3,900.2	0.00	0.00	3,842.0	1,122.00	457.0	-382.6	-357.8	0.00	0.00	0.00
4,000.0	0.00	0.00	3,941.8	1,022.22	457.0	-382.6	-357.8	0.00	0.00	0.00

Planning Report



Database:	EDM 5000.1 Single User Db	Local Co-ordinate Reference:	Well FAIRVIEW 10
Company:	EXTRACTION OIL & GAS	TVD Reference:	KB-EST @ 4964.0usft
Project:	WELD COUNTY, COLORADO (NAD 83)	MD Reference:	KB-EST @ 4964.0usft
Site:	NW SW SEC. 5 T2N R68W 6th P.M.	North Reference:	True
Well:	FAIRVIEW 10	Survey Calculation Method:	Minimum Curvature
Wellbore:	ORIGINAL WELLBORE		
Design:	PROPOSAL #3		

Planned Survey

MD (usft)	Inc (°)	Azi (°)	TVD (usft)	SS (usft)	+N/-S (usft)	+E/-W (usft)	Vertical Section (usft)	Dogleg Rate (°/100usft)	Build Rate (°/100usft)	Turn Rate (°/100usft)
4,100.0	0.00	0.00	4,041.8	922.22	457.0	-382.6	-357.8	0.00	0.00	0.00
4,200.0	0.00	0.00	4,141.8	822.22	457.0	-382.6	-357.8	0.00	0.00	0.00
4,300.0	0.00	0.00	4,241.8	722.22	457.0	-382.6	-357.8	0.00	0.00	0.00
4,400.0	0.00	0.00	4,341.8	622.22	457.0	-382.6	-357.8	0.00	0.00	0.00
SHANNON										
4,460.2	0.00	0.00	4,402.0	562.00	457.0	-382.6	-357.8	0.00	0.00	0.00
4,500.0	0.00	0.00	4,441.8	522.22	457.0	-382.6	-357.8	0.00	0.00	0.00
4,600.0	0.00	0.00	4,541.8	422.22	457.0	-382.6	-357.8	0.00	0.00	0.00
4,700.0	0.00	0.00	4,641.8	322.22	457.0	-382.6	-357.8	0.00	0.00	0.00
4,800.0	0.00	0.00	4,741.8	222.22	457.0	-382.6	-357.8	0.00	0.00	0.00
4,900.0	0.00	0.00	4,841.8	122.22	457.0	-382.6	-357.8	0.00	0.00	0.00
5,000.0	0.00	0.00	4,941.8	22.22	457.0	-382.6	-357.8	0.00	0.00	0.00
5,100.0	0.00	0.00	5,041.8	-77.78	457.0	-382.6	-357.8	0.00	0.00	0.00
5,200.0	0.00	0.00	5,141.8	-177.78	457.0	-382.6	-357.8	0.00	0.00	0.00
5,300.0	0.00	0.00	5,241.8	-277.78	457.0	-382.6	-357.8	0.00	0.00	0.00
5,400.0	0.00	0.00	5,341.8	-377.78	457.0	-382.6	-357.8	0.00	0.00	0.00
5,500.0	0.00	0.00	5,441.8	-477.78	457.0	-382.6	-357.8	0.00	0.00	0.00
5,600.0	0.00	0.00	5,541.8	-577.78	457.0	-382.6	-357.8	0.00	0.00	0.00
5,700.0	0.00	0.00	5,641.8	-677.78	457.0	-382.6	-357.8	0.00	0.00	0.00
5,800.0	0.00	0.00	5,741.8	-777.78	457.0	-382.6	-357.8	0.00	0.00	0.00
5,900.0	0.00	0.00	5,841.8	-877.78	457.0	-382.6	-357.8	0.00	0.00	0.00
6,000.0	0.00	0.00	5,941.8	-977.78	457.0	-382.6	-357.8	0.00	0.00	0.00
6,100.0	0.00	0.00	6,041.8	-1,077.78	457.0	-382.6	-357.8	0.00	0.00	0.00
6,200.0	0.00	0.00	6,141.8	-1,177.78	457.0	-382.6	-357.8	0.00	0.00	0.00
6,300.0	0.00	0.00	6,241.8	-1,277.78	457.0	-382.6	-357.8	0.00	0.00	0.00
KOP (10°/100ft BUR)										
6,307.2	0.00	0.00	6,249.0	-1,284.98	457.0	-382.6	-357.8	0.00	0.00	0.00
6,400.0	9.28	90.53	6,341.4	-1,377.37	456.9	-375.1	-350.3	10.00	10.00	0.00
6,500.0	19.28	90.53	6,438.2	-1,474.16	456.7	-350.5	-325.7	10.00	10.00	0.00
6,600.0	29.28	90.53	6,529.2	-1,565.20	456.3	-309.4	-284.7	10.00	10.00	0.00
6,700.0	39.27	90.53	6,611.7	-1,647.73	455.8	-253.2	-228.6	10.00	10.00	0.00
SHARON SPRINGS										
6,747.2	43.99	90.53	6,647.0	-1,683.00	455.5	-221.8	-197.3	10.00	10.00	0.00
6,800.0	49.27	90.53	6,683.2	-1,719.24	455.2	-183.5	-159.0	10.00	10.00	0.00
NIOBRARA										
6,836.2	52.90	90.53	6,706.0	-1,742.00	454.9	-155.3	-130.9	10.00	10.00	0.00
6,900.0	59.27	90.53	6,741.6	-1,777.56	454.4	-102.4	-78.1	10.00	10.00	0.00
7,000.0	69.27	90.53	6,784.9	-1,820.91	453.6	-12.4	11.7	10.00	10.00	0.00
7,100.0	79.27	90.53	6,812.0	-1,847.98	452.7	83.7	107.7	10.00	10.00	0.00
7,200.0	89.27	90.53	6,822.0	-1,857.95	451.8	183.1	206.9	10.00	10.00	0.00
NIO B TARGET										
7,203.6	89.27	90.53	6,822.0	-1,858.00	451.8	186.7	210.5	0.00	0.00	0.00
LANDING PNT - FAIRVIEW 10 (P3)										
7,207.2	89.99	90.53	6,822.0	-1,858.00	451.7	190.3	214.0	20.25	20.25	0.00
7,300.0	90.00	90.53	6,822.0	-1,858.01	450.9	283.1	306.7	0.00	0.00	0.00
7,400.0	90.00	90.53	6,822.0	-1,858.01	450.0	383.1	406.5	0.00	0.00	0.00
7,500.0	90.00	90.53	6,822.0	-1,858.02	449.1	483.1	506.3	0.00	0.00	0.00
7,600.0	90.00	90.53	6,822.0	-1,858.03	448.1	583.1	606.1	0.00	0.00	0.00
7,700.0	90.00	90.53	6,822.0	-1,858.03	447.2	683.1	705.9	0.00	0.00	0.00
7,800.0	90.00	90.53	6,822.0	-1,858.04	446.3	783.1	805.7	0.00	0.00	0.00
7,900.0	90.00	90.53	6,822.0	-1,858.05	445.4	883.1	905.5	0.00	0.00	0.00
8,000.0	90.00	90.53	6,822.1	-1,858.05	444.5	983.0	1,005.3	0.00	0.00	0.00
8,100.0	90.00	90.53	6,822.1	-1,858.06	443.5	1,083.0	1,105.1	0.00	0.00	0.00

Planning Report



Database:	EDM 5000.1 Single User Db	Local Co-ordinate Reference:	Well FAIRVIEW 10
Company:	EXTRACTION OIL & GAS	TVD Reference:	KB-EST @ 4964.0usft
Project:	WELD COUNTY, COLORADO (NAD 83)	MD Reference:	KB-EST @ 4964.0usft
Site:	NW SW SEC. 5 T2N R68W 6th P.M.	North Reference:	True
Well:	FAIRVIEW 10	Survey Calculation Method:	Minimum Curvature
Wellbore:	ORIGINAL WELLBORE		
Design:	PROPOSAL #3		

Planned Survey										
MD (usft)	Inc (°)	Azi (°)	TVD (usft)	SS (usft)	+N/-S (usft)	+E/-W (usft)	Vertical Section (usft)	Dogleg Rate (°/100usft)	Build Rate (°/100usft)	Turn Rate (°/100usft)
8,200.0	90.00	90.53	6,822.1	-1,858.06	442.6	1,183.0	1,204.9	0.00	0.00	0.00
8,300.0	90.00	90.53	6,822.1	-1,858.07	441.7	1,283.0	1,304.7	0.00	0.00	0.00
8,400.0	90.00	90.53	6,822.1	-1,858.08	440.8	1,383.0	1,404.5	0.00	0.00	0.00
8,500.0	90.00	90.53	6,822.1	-1,858.08	439.9	1,483.0	1,504.3	0.00	0.00	0.00
8,600.0	90.00	90.53	6,822.1	-1,858.08	438.9	1,583.0	1,604.1	0.00	0.00	0.00
8,700.0	90.00	90.53	6,822.1	-1,858.09	438.0	1,683.0	1,703.9	0.00	0.00	0.00
8,800.0	90.00	90.53	6,822.1	-1,858.09	437.1	1,783.0	1,803.7	0.00	0.00	0.00
8,900.0	90.00	90.53	6,822.1	-1,858.10	436.2	1,883.0	1,903.5	0.00	0.00	0.00
9,000.0	90.00	90.53	6,822.1	-1,858.10	435.3	1,983.0	2,003.3	0.00	0.00	0.00
9,100.0	90.00	90.53	6,822.1	-1,858.10	434.3	2,083.0	2,103.2	0.00	0.00	0.00
9,200.0	90.00	90.53	6,822.1	-1,858.11	433.4	2,183.0	2,203.0	0.00	0.00	0.00
9,300.0	90.00	90.53	6,822.1	-1,858.11	432.5	2,283.0	2,302.8	0.00	0.00	0.00
9,400.0	90.00	90.53	6,822.1	-1,858.11	431.6	2,383.0	2,402.6	0.00	0.00	0.00
9,500.0	90.00	90.53	6,822.1	-1,858.12	430.6	2,483.0	2,502.4	0.00	0.00	0.00
9,600.0	90.00	90.53	6,822.1	-1,858.12	429.7	2,583.0	2,602.2	0.00	0.00	0.00
9,700.0	90.00	90.53	6,822.1	-1,858.12	428.8	2,683.0	2,702.0	0.00	0.00	0.00
9,800.0	90.00	90.53	6,822.1	-1,858.12	427.9	2,783.0	2,801.8	0.00	0.00	0.00
9,900.0	90.00	90.53	6,822.1	-1,858.13	427.0	2,883.0	2,901.6	0.00	0.00	0.00
10,000.0	90.00	90.53	6,822.1	-1,858.13	426.0	2,983.0	3,001.4	0.00	0.00	0.00
10,100.0	90.00	90.53	6,822.1	-1,858.13	425.1	3,083.0	3,101.2	0.00	0.00	0.00
10,200.0	90.00	90.53	6,822.1	-1,858.13	424.2	3,183.0	3,201.0	0.00	0.00	0.00
10,300.0	90.00	90.53	6,822.1	-1,858.13	423.3	3,282.9	3,300.8	0.00	0.00	0.00
10,400.0	90.00	90.53	6,822.1	-1,858.13	422.3	3,382.9	3,400.6	0.00	0.00	0.00
10,500.0	90.00	90.53	6,822.1	-1,858.13	421.4	3,482.9	3,500.4	0.00	0.00	0.00
10,600.0	90.00	90.53	6,822.1	-1,858.13	420.5	3,582.9	3,600.2	0.00	0.00	0.00
10,700.0	90.00	90.53	6,822.1	-1,858.13	419.6	3,682.9	3,700.0	0.00	0.00	0.00
10,800.0	90.00	90.53	6,822.1	-1,858.13	418.7	3,782.9	3,799.8	0.00	0.00	0.00
10,900.0	90.00	90.53	6,822.1	-1,858.13	417.7	3,882.9	3,899.6	0.00	0.00	0.00
11,000.0	90.00	90.53	6,822.1	-1,858.13	416.8	3,982.9	3,999.5	0.00	0.00	0.00
11,100.0	90.00	90.53	6,822.1	-1,858.13	415.9	4,082.9	4,099.3	0.00	0.00	0.00
11,200.0	90.00	90.53	6,822.1	-1,858.13	415.0	4,182.9	4,199.1	0.00	0.00	0.00
11,300.0	90.00	90.53	6,822.1	-1,858.13	414.0	4,282.9	4,298.9	0.00	0.00	0.00
11,400.0	90.00	90.53	6,822.1	-1,858.13	413.1	4,382.9	4,398.7	0.00	0.00	0.00
11,500.0	90.00	90.53	6,822.1	-1,858.13	412.2	4,482.9	4,498.5	0.00	0.00	0.00
11,600.0	90.00	90.53	6,822.1	-1,858.13	411.3	4,582.9	4,598.3	0.00	0.00	0.00
11,700.0	90.00	90.53	6,822.1	-1,858.12	410.3	4,682.9	4,698.1	0.00	0.00	0.00
11,800.0	90.00	90.53	6,822.1	-1,858.12	409.4	4,782.9	4,797.9	0.00	0.00	0.00
11,900.0	90.00	90.53	6,822.1	-1,858.12	408.5	4,882.9	4,897.7	0.00	0.00	0.00
12,000.0	90.00	90.53	6,822.1	-1,858.12	407.6	4,982.9	4,997.5	0.00	0.00	0.00
12,100.0	90.00	90.53	6,822.1	-1,858.11	406.6	5,082.9	5,097.3	0.00	0.00	0.00
12,200.0	90.00	90.53	6,822.1	-1,858.11	405.7	5,182.9	5,197.1	0.00	0.00	0.00
12,300.0	90.00	90.53	6,822.1	-1,858.11	404.8	5,282.9	5,296.9	0.00	0.00	0.00
12,400.0	90.00	90.53	6,822.1	-1,858.10	403.9	5,382.9	5,396.7	0.00	0.00	0.00
12,500.0	90.00	90.53	6,822.1	-1,858.10	402.9	5,482.9	5,496.5	0.00	0.00	0.00
12,600.0	90.00	90.53	6,822.1	-1,858.10	402.0	5,582.9	5,596.3	0.00	0.00	0.00
12,700.0	90.00	90.53	6,822.1	-1,858.09	401.1	5,682.8	5,696.1	0.00	0.00	0.00
12,800.0	90.00	90.53	6,822.1	-1,858.09	400.2	5,782.8	5,795.9	0.00	0.00	0.00
12,900.0	90.00	90.53	6,822.1	-1,858.08	399.2	5,882.8	5,895.7	0.00	0.00	0.00
13,000.0	90.00	90.53	6,822.1	-1,858.08	398.3	5,982.8	5,995.6	0.00	0.00	0.00
13,100.0	90.00	90.53	6,822.1	-1,858.07	397.4	6,082.8	6,095.4	0.00	0.00	0.00
13,200.0	90.00	90.53	6,822.1	-1,858.07	396.5	6,182.8	6,195.2	0.00	0.00	0.00
13,300.0	90.00	90.53	6,822.1	-1,858.06	395.5	6,282.8	6,295.0	0.00	0.00	0.00
13,400.0	90.00	90.53	6,822.1	-1,858.06	394.6	6,382.8	6,394.8	0.00	0.00	0.00
13,500.0	90.00	90.53	6,822.1	-1,858.05	393.7	6,482.8	6,494.6	0.00	0.00	0.00

Planning Report



Database:	EDM 5000.1 Single User Db	Local Co-ordinate Reference:	Well FAIRVIEW 10
Company:	EXTRACTION OIL & GAS	TVD Reference:	KB-EST @ 4964.0usft
Project:	WELD COUNTY, COLORADO (NAD 83)	MD Reference:	KB-EST @ 4964.0usft
Site:	NW SW SEC. 5 T2N R68W 6th P.M.	North Reference:	True
Well:	FAIRVIEW 10	Survey Calculation Method:	Minimum Curvature
Wellbore:	ORIGINAL WELLBORE		
Design:	PROPOSAL #3		

Planned Survey										
MD (usft)	Inc (°)	Azi (°)	TVD (usft)	SS (usft)	+N/-S (usft)	+E/-W (usft)	Vertical Section (usft)	Dogleg Rate (°/100usft)	Build Rate (°/100usft)	Turn Rate (°/100usft)
13,600.0	90.00	90.53	6,822.0	-1,858.05	392.7	6,582.8	6,594.4	0.00	0.00	0.00
13,700.0	90.00	90.53	6,822.0	-1,858.04	391.8	6,682.8	6,694.2	0.00	0.00	0.00
13,800.0	90.00	90.53	6,822.0	-1,858.03	390.9	6,782.8	6,794.0	0.00	0.00	0.00
13,900.0	90.00	90.53	6,822.0	-1,858.03	390.0	6,882.8	6,893.8	0.00	0.00	0.00
14,000.0	90.00	90.53	6,822.0	-1,858.02	389.0	6,982.8	6,993.6	0.00	0.00	0.00
14,100.0	90.00	90.53	6,822.0	-1,858.01	388.1	7,082.8	7,093.4	0.00	0.00	0.00
14,200.0	90.00	90.53	6,822.0	-1,858.01	387.2	7,182.8	7,193.2	0.00	0.00	0.00
BHL - FAIRVIEW 10 (P3)										
14,273.6	90.00	90.53	6,822.0	-1,858.00	386.5	7,256.4	7,266.7	0.00	0.00	0.00

Formations						
MD (usft)	TVD (usft)	Name	Lithology	Dip (°)	Dip Direction (°)	
3,077.0	3,024.0	PARKMAN		0.00		
3,900.2	3,842.0	SUSSEX		0.00		
4,460.2	4,402.0	SHANNON		0.00		
6,747.2	6,647.0	SHARON SPRINGS		0.00		
6,836.2	6,706.0	NIOBRARA		0.00		
7,203.6	6,822.0	NIO B TARGET		0.00		

Plan Annotations				
MD (usft)	TVD (usft)	Local Coordinates		Comment
		+N/-S (usft)	+E/-W (usft)	
250.0	250.0	0.0	0.0	START NUDGE (2°/100ft BUR)
849.8	845.4	48.0	-40.2	EOB TO 12° INC
3,115.4	3,061.6	409.0	-342.4	END OF TANGENT
3,715.2	3,657.0	457.0	-382.6	EOD TO VERTICAL
6,307.2	6,249.0	457.0	-382.6	KOP (10°/100ft BUR)
7,207.2	6,822.0	451.7	190.3	LANDING PNT - FAIRVIEW 10 (P3)
14,273.6	6,822.0	386.5	7,256.4	BHL - FAIRVIEW 10 (P3)