

# **EXTRACTION OIL & GAS**

**WELD COUNTY, COLORADO (NAD 83)**

**NW SW SEC. 5 T2N R68W 6th P.M.**

**FAIRVIEW 9**

**ORIGINAL WELLBORE**

**10 August, 2015**

**Plan: PROPOSAL #2**

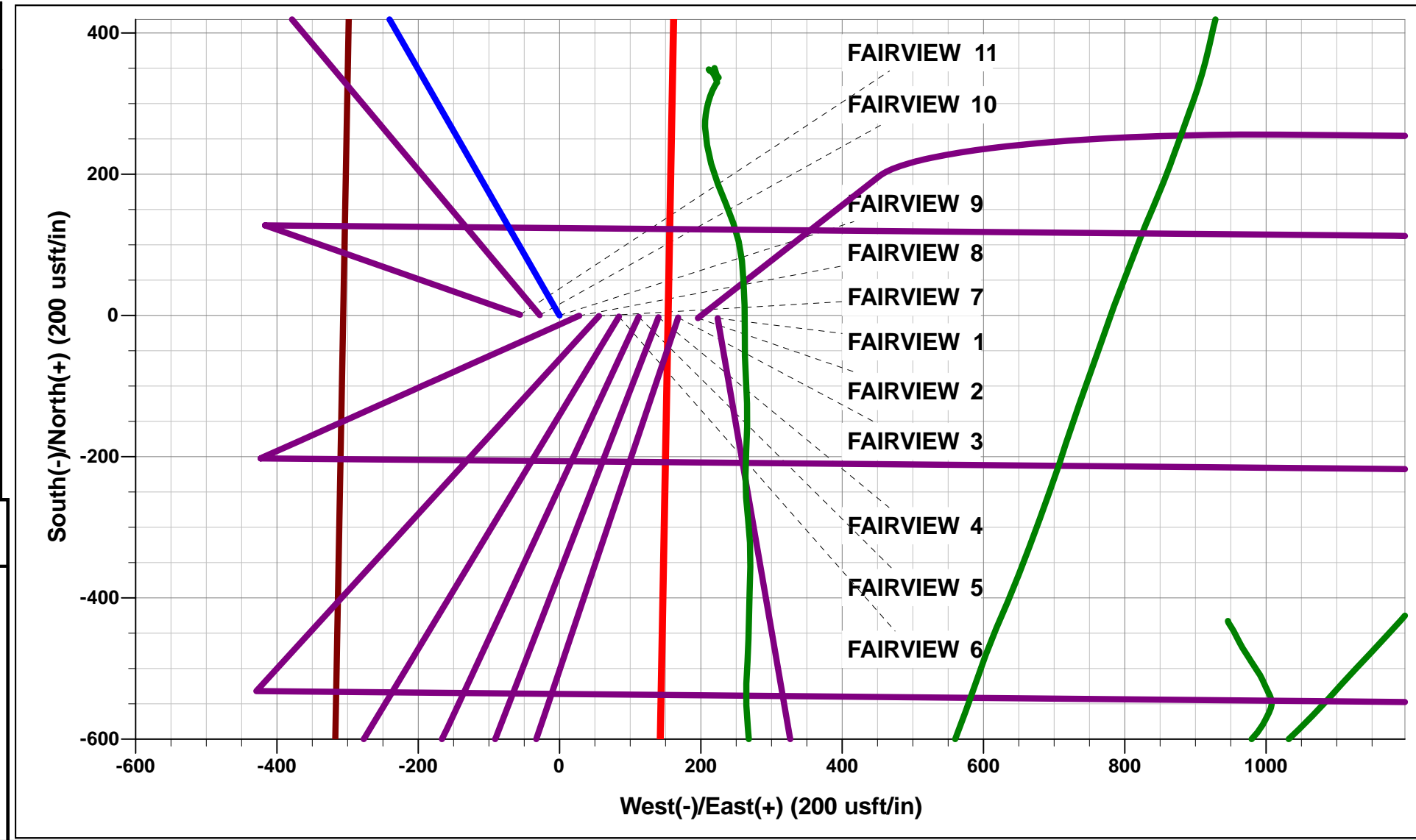




Project: WELD COUNTY, COLORADO (NAD 83)  
Site: NW SW SEC. 5 T2N R68W 6th P.M.  
Well: FAIRVIEW 9  
Wellbore: ORIGINAL WELLBORE  
Design: PROPOSAL #2

ANNOTATIONS									
TVD	MD	Inc	Azi	+N/-S	+E/-W	VSect	Dep	Annotation	
400.0	400.0	0.00	0.00	0.0	0.0	0.0	0.0	START NUDDGE (2°/100ft BUR)	
995.8	1000.2	12.00	330.17	54.3	-31.2	-26.3	62.6	EOB TO 12° INC	
4243.1	4320.1	12.00	330.17	653.3	-374.6	-315.8	753.1	END OF TANGENT	
4839.0	4920.4	0.00	0.00	707.7	-405.8	-342.1	815.8	EOD TO VERTICAL	
6539.0	6620.4	0.00	0.00	707.7	-405.8	-342.1	815.8	KOP (10°/100ft BUR)	
7112.0	7520.4	90.00	90.53	702.4	167.1	228.1	1388.8	LANDING PNT - FAIRVIEW 9 (P2)	
7112.0	14584.7	90.00	90.53	637.1	7231.1	7259.2	8453.1	BHL - FAIRVIEW 9 (P2)	

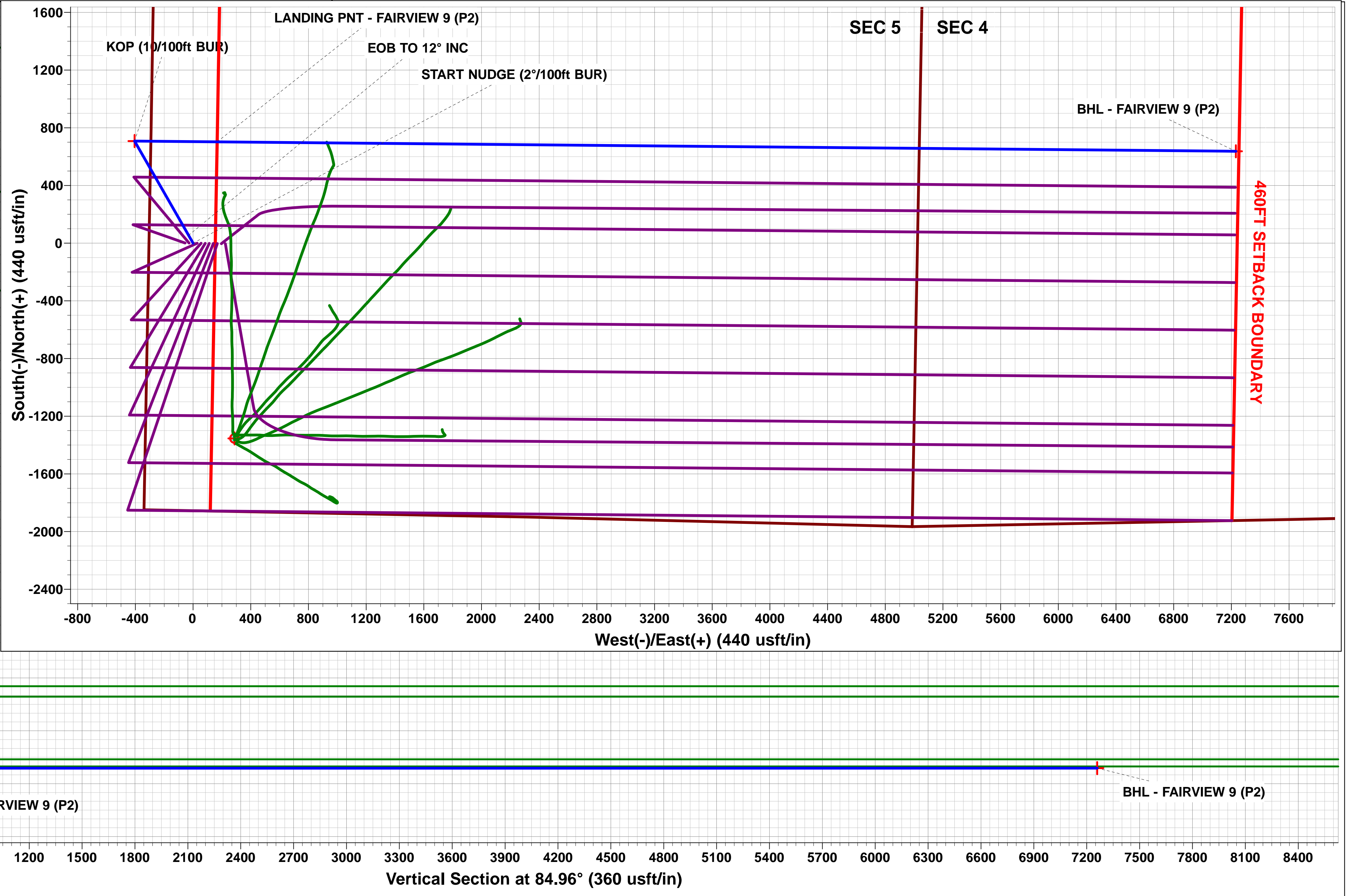
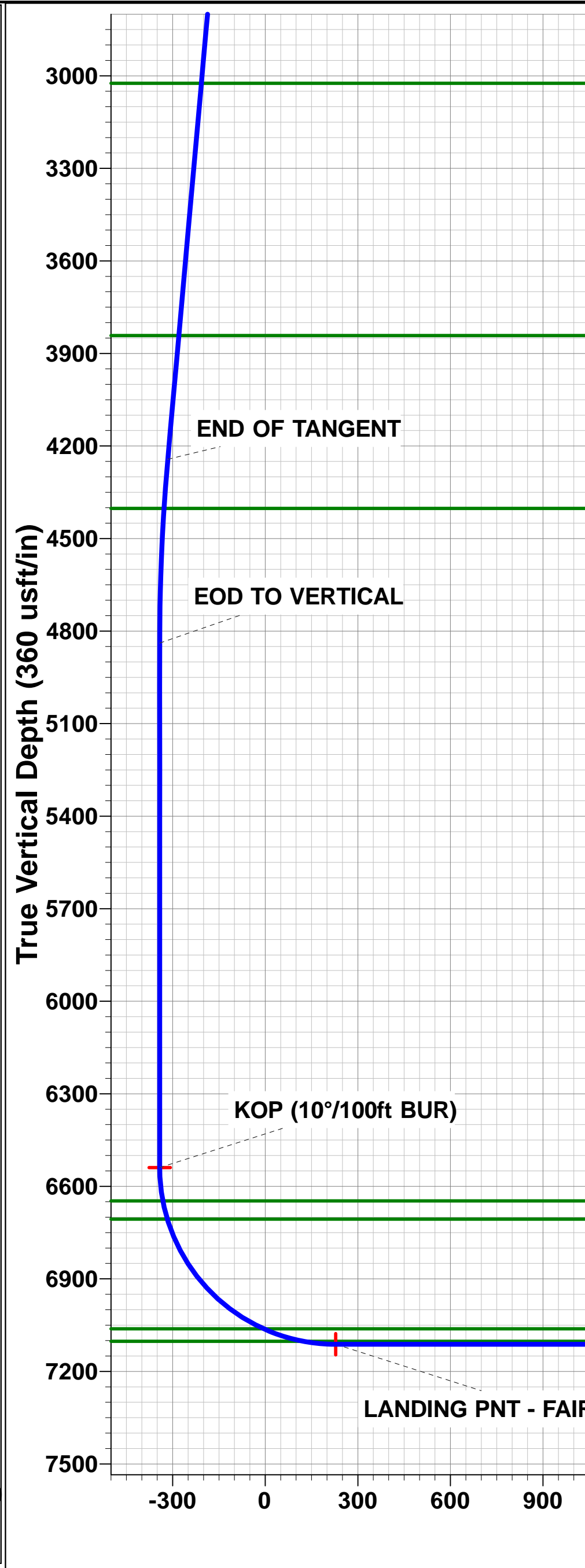
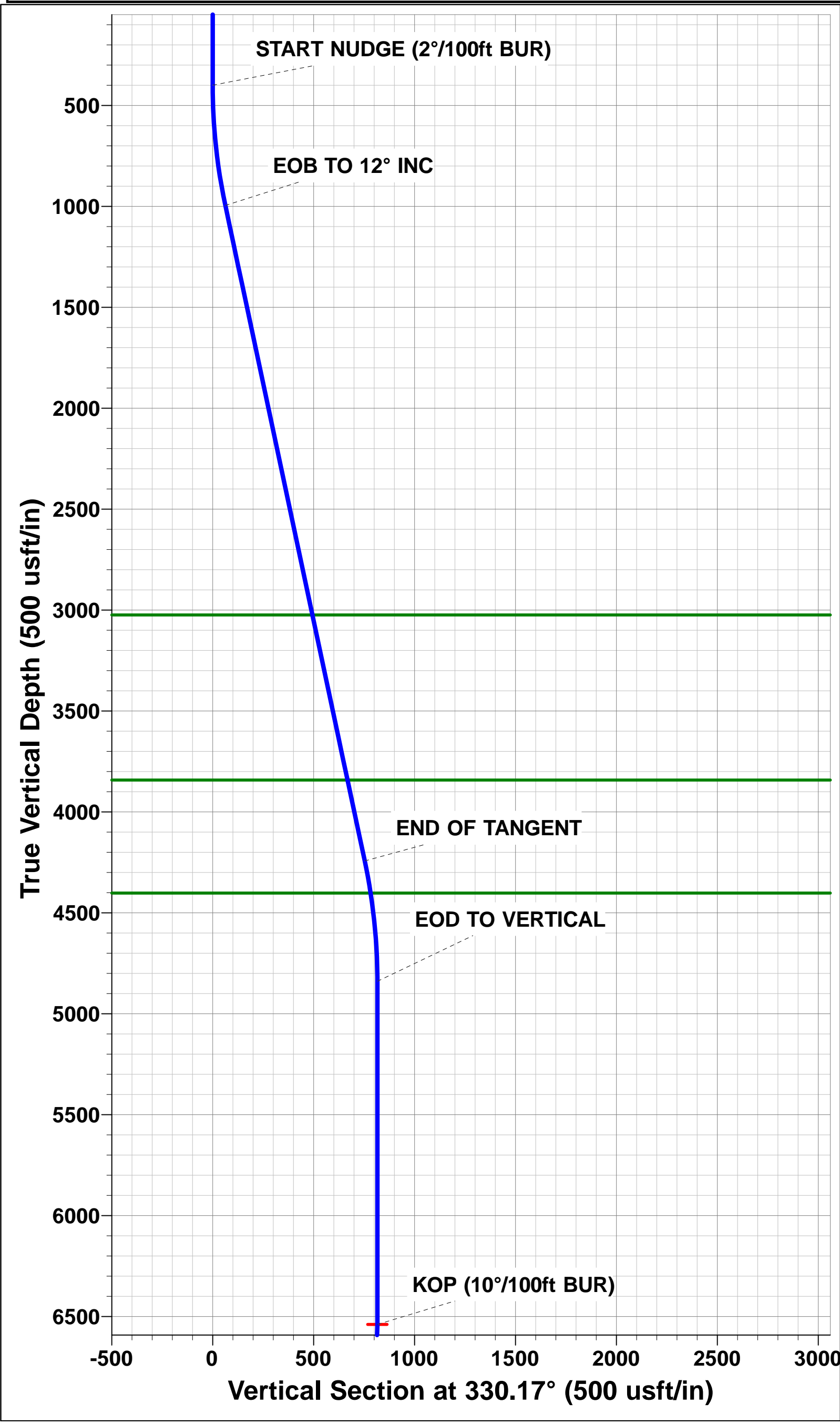
WELLBORE TARGET DETAILS (LAT/LONG)					
Name	TVD	+N/-S	+E/-W	Latitude	Longitude
KOP - FAIRVIEW 9 (P2)	6539.0	707.7	-405.8	40.167710	-105.036920
LANDING PNT - FAIRVIEW 9 (P2)	7112.0	702.4	167.1	40.167695	-105.034870
BHL - FAIRVIEW 9 (P2)	7112.0	637.1	7231.2	40.167513	-105.009594



FORMATION TOP DETAILS		
TVDPath	MDPath	Formation
3024.0	3073.7	PARKMAN
3842.0	3910.0	SUSSEX
4402.0	4481.7	SHANNON
6647.0	6729.0	SHARON SPRINGS
6706.0	6789.8	NIOBRARA
7062.0	7279.3	FORT HAYS
7102.0	7413.2	CODELL

Azimuths to True North  
Magnetic North: 8.53°

Magnetic Field  
Strength: 52451.2snT  
Dip Angle: 66.67°  
Date: 10/08/2015  
Model: IGRF2015



# Planning Report



<b>Database:</b>	EDM 5000.1 Single User Db	<b>Local Co-ordinate Reference:</b>	Well FAIRVIEW 9
<b>Company:</b>	EXTRACTION OIL & GAS	<b>TVD Reference:</b>	KB-EST @ 4963.0usft
<b>Project:</b>	WELD COUNTY, COLORADO (NAD 83)	<b>MD Reference:</b>	KB-EST @ 4963.0usft
<b>Site:</b>	NW SW SEC. 5 T2N R68W 6th P.M.	<b>North Reference:</b>	True
<b>Well:</b>	FAIRVIEW 9	<b>Survey Calculation Method:</b>	Minimum Curvature
<b>Wellbore:</b>	ORIGINAL WELLBORE		
<b>Design:</b>	PROPOSAL #2		

<b>Project</b>	WELD COUNTY, COLORADO (NAD 83)		
<b>Map System:</b>	US State Plane 1983	<b>System Datum:</b>	Mean Sea Level
<b>Geo Datum:</b>	North American Datum 1983		
<b>Map Zone:</b>	Colorado Northern Zone		Using geodetic scale factor

<b>Site</b>	NW SW SEC. 5 T2N R68W 6th P.M.		
<b>Site Position:</b>		<b>Northing:</b>	1,303,569.20 usft
<b>From:</b>	Lat/Long	<b>Easting:</b>	3,130,047.26 usft
<b>Position Uncertainty:</b>	0.0 usft	<b>Slot Radius:</b>	1.10000 ft
		<b>Latitude:</b>	40.165756
		<b>Longitude:</b>	-105.034667
		<b>Grid Convergence:</b>	0.30 °

<b>Well</b>	FAIRVIEW 9		
<b>Well Position</b>	<b>+N/-S</b>	4.0 usft	<b>Northing:</b>
	<b>+E/-W</b>	-223.9 usft	<b>Easting:</b>
<b>Position Uncertainty</b>	0.0 usft		<b>Wellhead Elevation:</b>
			<b>Latitude:</b>
			<b>Longitude:</b>
			<b>Ground Level:</b>

<b>Wellbore</b>	ORIGINAL WELLBORE				
<b>Magnetics</b>	<b>Model Name</b>	<b>Sample Date</b>	<b>Declination (°)</b>	<b>Dip Angle (°)</b>	<b>Field Strength (nT)</b>
	IGRF2015	10/08/2015	8.53	66.67	52,451

<b>Design</b>	PROPOSAL #2				
<b>Audit Notes:</b>					
<b>Version:</b>	<b>Phase:</b>	PROTOTYPE	<b>Tie On Depth:</b>	0.0	
<b>Vertical Section:</b>	<b>Depth From (TVD) (usft)</b>	<b>+N/-S (usft)</b>	<b>+E/-W (usft)</b>	<b>Direction (°)</b>	
	7,112.0	0.0	0.0	84.96	

<b>Plan Sections</b>											
MD (usft)	Inc (°)	Azi (°)	Vertical Depth	SS (usft)	+N/-S (usft)	+E/-W (usft)	Dogleg Rate (°/100usf)	Build Rate (°/100usf)	Turn Rate (°/100usf)	TFO (°)	Target
0.0	0.00	0.00	0.0	-4,963.0	0.0	0.0	0.00	0.00	0.00	0.00	
400.0	0.00	0.00	400.0	-4,563.0	0.0	0.0	0.00	0.00	0.00	0.00	
1,000.2	12.00	330.17	995.8	-3,967.2	54.3	-31.2	2.00	2.00	0.00	330.17	
4,320.1	12.00	330.17	4,243.2	-719.8	653.4	-374.6	0.00	0.00	0.00	0.00	
4,920.4	0.00	0.00	4,839.0	-124.0	707.7	-405.8	2.00	-2.00	0.00	180.00	
6,620.4	0.00	0.00	6,539.0	1,576.0	707.7	-405.8	0.00	0.00	0.00	0.00	KOP - FAIRVIEW 9
7,520.4	90.00	90.53	7,112.0	2,149.0	702.4	167.1	10.00	10.00	10.06	90.53	LANDING PNT - FAIRVIEW 9
14,584.7	90.00	90.53	7,112.0	2,149.0	637.1	7,231.2	0.00	0.00	0.00	-36.18	BHL - FAIRVIEW 9

# Planning Report



<b>Database:</b>	EDM 5000.1 Single User Db	<b>Local Co-ordinate Reference:</b>	Well FAIRVIEW 9
<b>Company:</b>	EXTRACTION OIL & GAS	<b>TVD Reference:</b>	KB-EST @ 4963.0usft
<b>Project:</b>	WELD COUNTY, COLORADO (NAD 83)	<b>MD Reference:</b>	KB-EST @ 4963.0usft
<b>Site:</b>	NW SW SEC. 5 T2N R68W 6th P.M.	<b>North Reference:</b>	True
<b>Well:</b>	FAIRVIEW 9	<b>Survey Calculation Method:</b>	Minimum Curvature
<b>Wellbore:</b>	ORIGINAL WELLBORE		
<b>Design:</b>	PROPOSAL #2		

Planned Survey										
MD (usft)	Inc (°)	Azi (°)	TVD (usft)	SS (usft)	+N/-S (usft)	+E/-W (usft)	Vertical Section (usft)	Dogleg Rate (°/100usft)	Build Rate (°/100usft)	Turn Rate (°/100usft)
0.0	0.00	0.00	0.0	4,963.00	0.0	0.0	0.0	0.00	0.00	0.00
100.0	0.00	0.00	100.0	4,863.00	0.0	0.0	0.0	0.00	0.00	0.00
200.0	0.00	0.00	200.0	4,763.00	0.0	0.0	0.0	0.00	0.00	0.00
300.0	0.00	0.00	300.0	4,663.00	0.0	0.0	0.0	0.00	0.00	0.00
<b>START NUDGE (2°/100ft BUR)</b>										
400.0	0.00	0.00	400.0	4,563.00	0.0	0.0	0.0	0.00	0.00	0.00
500.0	2.00	330.17	500.0	4,463.02	1.5	-0.9	-0.7	2.00	2.00	0.00
600.0	4.00	330.17	599.8	4,363.16	6.1	-3.5	-2.9	2.00	2.00	0.00
700.0	6.00	330.17	699.5	4,263.55	13.6	-7.8	-6.6	2.00	2.00	0.00
800.0	8.00	330.17	798.7	4,164.30	24.2	-13.9	-11.7	2.00	2.00	0.00
900.0	10.00	330.17	897.5	4,065.53	37.8	-21.6	-18.3	2.00	2.00	0.00
1,000.0	12.00	330.17	995.6	3,967.38	54.3	-31.1	-26.3	2.00	2.00	0.00
<b>EOB TO 12° INC</b>										
1,000.2	12.00	330.17	995.8	3,967.18	54.3	-31.2	-26.3	2.00	2.00	0.00
1,100.0	12.00	330.17	1,093.4	3,869.56	72.4	-41.5	-35.0	0.00	0.00	0.00
1,200.0	12.00	330.17	1,191.2	3,771.75	90.4	-51.8	-43.7	0.00	0.00	0.00
1,300.0	12.00	330.17	1,289.1	3,673.94	108.4	-62.2	-52.4	0.00	0.00	0.00
1,400.0	12.00	330.17	1,386.9	3,576.12	126.5	-72.5	-61.1	0.00	0.00	0.00
1,500.0	12.00	330.17	1,484.7	3,478.31	144.5	-82.9	-69.9	0.00	0.00	0.00
1,600.0	12.00	330.17	1,582.5	3,380.50	162.6	-93.2	-78.6	0.00	0.00	0.00
1,700.0	12.00	330.17	1,680.3	3,282.68	180.6	-103.6	-87.3	0.00	0.00	0.00
1,800.0	12.00	330.17	1,778.1	3,184.87	198.7	-113.9	-96.0	0.00	0.00	0.00
1,900.0	12.00	330.17	1,875.9	3,087.06	216.7	-124.3	-104.8	0.00	0.00	0.00
2,000.0	12.00	330.17	1,973.8	2,989.25	234.7	-134.6	-113.5	0.00	0.00	0.00
2,100.0	12.00	330.17	2,071.6	2,891.43	252.8	-144.9	-122.2	0.00	0.00	0.00
2,200.0	12.00	330.17	2,169.4	2,793.62	270.8	-155.3	-130.9	0.00	0.00	0.00
2,300.0	12.00	330.17	2,267.2	2,695.81	288.9	-165.6	-139.6	0.00	0.00	0.00
2,400.0	12.00	330.17	2,365.0	2,597.99	306.9	-176.0	-148.4	0.00	0.00	0.00
2,500.0	12.00	330.17	2,462.8	2,500.18	325.0	-186.3	-157.1	0.00	0.00	0.00
2,600.0	12.00	330.17	2,560.6	2,402.37	343.0	-196.7	-165.8	0.00	0.00	0.00
2,700.0	12.00	330.17	2,658.4	2,304.55	361.0	-207.0	-174.5	0.00	0.00	0.00
2,800.0	12.00	330.17	2,756.3	2,206.74	379.1	-217.4	-183.3	0.00	0.00	0.00
2,900.0	12.00	330.17	2,854.1	2,108.93	397.1	-227.7	-192.0	0.00	0.00	0.00
3,000.0	12.00	330.17	2,951.9	2,011.11	415.2	-238.1	-200.7	0.00	0.00	0.00
<b>PARKMAN</b>										
3,073.7	12.00	330.17	3,024.0	1,939.00	428.5	-245.7	-207.1	0.00	0.00	0.00
3,100.0	12.00	330.17	3,049.7	1,913.30	433.2	-248.4	-209.4	0.00	0.00	0.00
3,200.0	12.00	330.17	3,147.5	1,815.49	451.3	-258.7	-218.1	0.00	0.00	0.00
3,300.0	12.00	330.17	3,245.3	1,717.67	469.3	-269.1	-226.9	0.00	0.00	0.00
3,400.0	12.00	330.17	3,343.1	1,619.86	487.3	-279.4	-235.6	0.00	0.00	0.00
3,500.0	12.00	330.17	3,441.0	1,522.05	505.4	-289.8	-244.3	0.00	0.00	0.00
3,600.0	12.00	330.17	3,538.8	1,424.23	523.4	-300.1	-253.0	0.00	0.00	0.00
3,700.0	12.00	330.17	3,636.6	1,326.42	541.5	-310.5	-261.8	0.00	0.00	0.00
3,800.0	12.00	330.17	3,734.4	1,228.61	559.5	-320.8	-270.5	0.00	0.00	0.00
3,900.0	12.00	330.17	3,832.2	1,130.79	577.6	-331.2	-279.2	0.00	0.00	0.00
<b>SUSSEX</b>										
3,910.0	12.00	330.17	3,842.0	1,121.00	579.4	-332.2	-280.1	0.00	0.00	0.00
4,000.0	12.00	330.17	3,930.0	1,032.98	595.6	-341.5	-287.9	0.00	0.00	0.00
4,100.0	12.00	330.17	4,027.8	935.17	613.6	-351.9	-296.6	0.00	0.00	0.00
4,200.0	12.00	330.17	4,125.6	837.35	631.7	-362.2	-305.4	0.00	0.00	0.00
4,300.0	12.00	330.17	4,223.5	739.54	649.7	-372.6	-314.1	0.00	0.00	0.00
<b>END OF TANGENT</b>										
4,320.1	12.00	330.17	4,243.1	719.88	653.3	-374.6	-315.8	0.00	0.00	0.00
4,400.0	10.41	330.17	4,321.5	641.51	666.8	-382.4	-322.4	2.00	-2.00	0.00

# Planning Report



<b>Database:</b>	EDM 5000.1 Single User Db	<b>Local Co-ordinate Reference:</b>	Well FAIRVIEW 9
<b>Company:</b>	EXTRACTION OIL & GAS	<b>TVD Reference:</b>	KB-EST @ 4963.0usft
<b>Project:</b>	WELD COUNTY, COLORADO (NAD 83)	<b>MD Reference:</b>	KB-EST @ 4963.0usft
<b>Site:</b>	NW SW SEC. 5 T2N R68W 6th P.M.	<b>North Reference:</b>	True
<b>Well:</b>	FAIRVIEW 9	<b>Survey Calculation Method:</b>	Minimum Curvature
<b>Wellbore:</b>	ORIGINAL WELLBORE		
<b>Design:</b>	PROPOSAL #2		

Planned Survey										
MD (usft)	Inc (°)	Azi (°)	TVD (usft)	SS (usft)	+N/-S (usft)	+E/-W (usft)	Vertical Section (usft)	Dogleg Rate (°/100usft)	Build Rate (°/100usft)	Turn Rate (°/100usft)
<b>SHANNON</b>										
4,481.7	8.77	330.17	4,402.0	561.00	678.6	-389.1	-328.1	2.00	-2.00	0.00
4,500.0	8.41	330.17	4,420.1	542.86	681.0	-390.5	-329.2	2.00	-2.00	0.00
4,600.0	6.41	330.17	4,519.3	443.70	692.2	-396.9	-334.6	2.00	-2.00	0.00
4,700.0	4.41	330.17	4,618.9	344.15	700.4	-401.6	-338.6	2.00	-2.00	0.00
4,800.0	2.41	330.17	4,718.7	244.33	705.5	-404.5	-341.1	2.00	-2.00	0.00
4,900.0	0.41	330.17	4,818.6	144.36	707.6	-405.8	-342.1	2.00	-2.00	0.00
<b>EOD TO VERTICAL</b>										
4,920.4	0.00	0.00	4,839.0	123.96	707.7	-405.8	-342.1	2.00	-2.00	0.00
5,000.0	0.00	0.00	4,918.6	44.36	707.7	-405.8	-342.1	0.00	0.00	0.00
5,100.0	0.00	0.00	5,018.6	-55.64	707.7	-405.8	-342.1	0.00	0.00	0.00
5,200.0	0.00	0.00	5,118.6	-155.64	707.7	-405.8	-342.1	0.00	0.00	0.00
5,300.0	0.00	0.00	5,218.6	-255.64	707.7	-405.8	-342.1	0.00	0.00	0.00
5,400.0	0.00	0.00	5,318.6	-355.64	707.7	-405.8	-342.1	0.00	0.00	0.00
5,500.0	0.00	0.00	5,418.6	-455.64	707.7	-405.8	-342.1	0.00	0.00	0.00
5,600.0	0.00	0.00	5,518.6	-555.64	707.7	-405.8	-342.1	0.00	0.00	0.00
5,700.0	0.00	0.00	5,618.6	-655.64	707.7	-405.8	-342.1	0.00	0.00	0.00
5,800.0	0.00	0.00	5,718.6	-755.64	707.7	-405.8	-342.1	0.00	0.00	0.00
5,900.0	0.00	0.00	5,818.6	-855.64	707.7	-405.8	-342.1	0.00	0.00	0.00
6,000.0	0.00	0.00	5,918.6	-955.64	707.7	-405.8	-342.1	0.00	0.00	0.00
6,100.0	0.00	0.00	6,018.6	-1,055.64	707.7	-405.8	-342.1	0.00	0.00	0.00
6,200.0	0.00	0.00	6,118.6	-1,155.64	707.7	-405.8	-342.1	0.00	0.00	0.00
6,300.0	0.00	0.00	6,218.6	-1,255.64	707.7	-405.8	-342.1	0.00	0.00	0.00
6,400.0	0.00	0.00	6,318.6	-1,355.64	707.7	-405.8	-342.1	0.00	0.00	0.00
6,500.0	0.00	0.00	6,418.6	-1,455.64	707.7	-405.8	-342.1	0.00	0.00	0.00
6,600.0	0.00	0.00	6,518.6	-1,555.64	707.7	-405.8	-342.1	0.00	0.00	0.00
<b>KOP (10°/100ft BUR)</b>										
6,620.4	0.00	0.00	6,539.0	-1,576.04	707.7	-405.8	-342.1	0.00	0.00	0.00
6,700.0	7.96	90.53	6,618.4	-1,655.38	707.7	-400.3	-336.6	10.00	10.00	0.00
<b>SHARON SPRINGS</b>										
6,729.0	10.86	90.53	6,647.0	-1,684.00	707.6	-395.5	-331.9	10.00	10.00	0.00
<b>NIOBRARA</b>										
6,789.8	16.94	90.53	6,706.0	-1,743.00	707.5	-380.9	-317.4	10.00	10.00	0.00
6,800.0	17.96	90.53	6,715.7	-1,752.71	707.4	-377.9	-314.3	10.00	10.00	0.00
6,900.0	27.96	90.53	6,807.7	-1,844.67	707.1	-338.9	-275.5	10.00	10.00	0.00
7,000.0	37.96	90.53	6,891.5	-1,928.47	706.6	-284.6	-221.5	10.00	10.00	0.00
7,100.0	47.96	90.53	6,964.6	-2,001.55	705.9	-216.5	-153.7	10.00	10.00	0.00
7,200.0	57.96	90.53	7,024.7	-2,061.72	705.2	-136.8	-74.4	10.00	10.00	0.00
<b>FORT HAYS</b>										
7,279.3	65.89	90.53	7,062.0	-2,099.00	704.6	-66.9	-4.8	10.00	10.00	0.00
7,300.0	67.96	90.53	7,070.1	-2,107.12	704.4	-47.8	14.2	10.00	10.00	0.00
7,400.0	77.96	90.53	7,099.4	-2,136.39	703.5	47.6	109.2	10.00	10.00	0.00
<b>CODELL</b>										
7,413.2	79.28	90.53	7,102.0	-2,139.00	703.4	60.6	122.1	10.00	10.00	0.00
7,500.0	87.96	90.53	7,111.6	-2,148.64	702.6	146.8	207.8	10.00	10.00	0.00
<b>LANDING PNT - FAIRVIEW 9 (P2)</b>										
7,520.4	90.00	90.53	7,112.0	-2,149.00	702.4	167.1	228.1	9.99	9.99	0.00
7,600.0	90.00	90.53	7,112.0	-2,149.01	701.6	246.7	307.4	0.00	0.00	0.00
7,700.0	90.00	90.53	7,112.0	-2,149.01	700.7	346.7	406.9	0.00	0.00	0.00
7,800.0	90.00	90.53	7,112.0	-2,149.02	699.8	446.7	506.4	0.00	0.00	0.00
7,900.0	90.00	90.53	7,112.0	-2,149.03	698.8	546.7	606.0	0.00	0.00	0.00
8,000.0	90.00	90.53	7,112.0	-2,149.04	697.9	646.7	705.5	0.00	0.00	0.00
8,100.0	90.00	90.53	7,112.0	-2,149.04	697.0	746.7	805.0	0.00	0.00	0.00



# Planning Report



<b>Database:</b>	EDM 5000.1 Single User Db	<b>Local Co-ordinate Reference:</b>	Well FAIRVIEW 9
<b>Company:</b>	EXTRACTION OIL & GAS	<b>TVD Reference:</b>	KB-EST @ 4963.0usft
<b>Project:</b>	WELD COUNTY, COLORADO (NAD 83)	<b>MD Reference:</b>	KB-EST @ 4963.0usft
<b>Site:</b>	NW SW SEC. 5 T2N R68W 6th P.M.	<b>North Reference:</b>	True
<b>Well:</b>	FAIRVIEW 9	<b>Survey Calculation Method:</b>	Minimum Curvature
<b>Wellbore:</b>	ORIGINAL WELLBORE		
<b>Design:</b>	PROPOSAL #2		

Planned Survey										
MD (usft)	Inc (°)	Azi (°)	TVD (usft)	SS (usft)	+N/-S (usft)	+E/-W (usft)	Vertical Section (usft)	Dogleg Rate (°/100usft)	Build Rate (°/100usft)	Turn Rate (°/100usft)
8,200.0	90.00	90.53	7,112.1	-2,149.05	696.1	846.7	904.5	0.00	0.00	0.00
8,300.0	90.00	90.53	7,112.1	-2,149.06	695.1	946.7	1,004.1	0.00	0.00	0.00
8,400.0	90.00	90.53	7,112.1	-2,149.06	694.2	1,046.7	1,103.6	0.00	0.00	0.00
8,500.0	90.00	90.53	7,112.1	-2,149.07	693.3	1,146.7	1,203.1	0.00	0.00	0.00
8,600.0	90.00	90.53	7,112.1	-2,149.08	692.3	1,246.7	1,302.7	0.00	0.00	0.00
8,700.0	90.00	90.53	7,112.1	-2,149.08	691.4	1,346.7	1,402.2	0.00	0.00	0.00
8,800.0	90.00	90.53	7,112.1	-2,149.09	690.5	1,446.7	1,501.7	0.00	0.00	0.00
8,900.0	90.00	90.53	7,112.1	-2,149.09	689.6	1,546.7	1,601.2	0.00	0.00	0.00
9,000.0	90.00	90.53	7,112.1	-2,149.10	688.6	1,646.7	1,700.8	0.00	0.00	0.00
9,100.0	90.00	90.53	7,112.1	-2,149.10	687.7	1,746.7	1,800.3	0.00	0.00	0.00
9,200.0	90.00	90.53	7,112.1	-2,149.11	686.8	1,846.7	1,899.8	0.00	0.00	0.00
9,300.0	90.00	90.53	7,112.1	-2,149.11	685.9	1,946.7	1,999.4	0.00	0.00	0.00
9,400.0	90.00	90.53	7,112.1	-2,149.12	684.9	2,046.7	2,098.9	0.00	0.00	0.00
9,500.0	90.00	90.53	7,112.1	-2,149.12	684.0	2,146.7	2,198.4	0.00	0.00	0.00
9,600.0	90.00	90.53	7,112.1	-2,149.12	683.1	2,246.7	2,297.9	0.00	0.00	0.00
9,700.0	90.00	90.53	7,112.1	-2,149.13	682.2	2,346.7	2,397.5	0.00	0.00	0.00
9,800.0	90.00	90.53	7,112.1	-2,149.13	681.2	2,446.6	2,497.0	0.00	0.00	0.00
9,900.0	90.00	90.53	7,112.1	-2,149.13	680.3	2,546.6	2,596.5	0.00	0.00	0.00
10,000.0	90.00	90.53	7,112.1	-2,149.14	679.4	2,646.6	2,696.1	0.00	0.00	0.00
10,100.0	90.00	90.53	7,112.1	-2,149.14	678.5	2,746.6	2,795.6	0.00	0.00	0.00
10,200.0	90.00	90.53	7,112.1	-2,149.14	677.5	2,846.6	2,895.1	0.00	0.00	0.00
10,300.0	90.00	90.53	7,112.1	-2,149.14	676.6	2,946.6	2,994.6	0.00	0.00	0.00
10,400.0	90.00	90.53	7,112.1	-2,149.14	675.7	3,046.6	3,094.2	0.00	0.00	0.00
10,500.0	90.00	90.53	7,112.1	-2,149.15	674.8	3,146.6	3,193.7	0.00	0.00	0.00
10,600.0	90.00	90.53	7,112.1	-2,149.15	673.8	3,246.6	3,293.2	0.00	0.00	0.00
10,700.0	90.00	90.53	7,112.1	-2,149.15	672.9	3,346.6	3,392.8	0.00	0.00	0.00
10,800.0	90.00	90.53	7,112.1	-2,149.15	672.0	3,446.6	3,492.3	0.00	0.00	0.00
10,900.0	90.00	90.53	7,112.1	-2,149.15	671.1	3,546.6	3,591.8	0.00	0.00	0.00
11,000.0	90.00	90.53	7,112.1	-2,149.15	670.1	3,646.6	3,691.3	0.00	0.00	0.00
11,100.0	90.00	90.53	7,112.1	-2,149.15	669.2	3,746.6	3,790.9	0.00	0.00	0.00
11,200.0	90.00	90.53	7,112.1	-2,149.15	668.3	3,846.6	3,890.4	0.00	0.00	0.00
11,300.0	90.00	90.53	7,112.1	-2,149.15	667.4	3,946.6	3,989.9	0.00	0.00	0.00
11,400.0	90.00	90.53	7,112.1	-2,149.15	666.4	4,046.6	4,089.5	0.00	0.00	0.00
11,500.0	90.00	90.53	7,112.1	-2,149.15	665.5	4,146.6	4,189.0	0.00	0.00	0.00
11,600.0	90.00	90.53	7,112.1	-2,149.15	664.6	4,246.6	4,288.5	0.00	0.00	0.00
11,700.0	90.00	90.53	7,112.1	-2,149.14	663.7	4,346.6	4,388.0	0.00	0.00	0.00
11,800.0	90.00	90.53	7,112.1	-2,149.14	662.7	4,446.6	4,487.6	0.00	0.00	0.00
11,900.0	90.00	90.53	7,112.1	-2,149.14	661.8	4,546.6	4,587.1	0.00	0.00	0.00
12,000.0	90.00	90.53	7,112.1	-2,149.14	660.9	4,646.6	4,686.6	0.00	0.00	0.00
12,100.0	90.00	90.53	7,112.1	-2,149.14	660.0	4,746.5	4,786.2	0.00	0.00	0.00
12,200.0	90.00	90.53	7,112.1	-2,149.13	659.1	4,846.5	4,885.7	0.00	0.00	0.00
12,300.0	90.00	90.53	7,112.1	-2,149.13	658.1	4,946.5	4,985.2	0.00	0.00	0.00
12,400.0	90.00	90.53	7,112.1	-2,149.13	657.2	5,046.5	5,084.7	0.00	0.00	0.00
12,500.0	90.00	90.53	7,112.1	-2,149.12	656.3	5,146.5	5,184.3	0.00	0.00	0.00
12,600.0	90.00	90.53	7,112.1	-2,149.12	655.4	5,246.5	5,283.8	0.00	0.00	0.00
12,700.0	90.00	90.53	7,112.1	-2,149.12	654.5	5,346.5	5,383.3	0.00	0.00	0.00
12,800.0	90.00	90.53	7,112.1	-2,149.11	653.5	5,446.5	5,482.9	0.00	0.00	0.00
12,900.0	90.00	90.53	7,112.1	-2,149.11	652.6	5,546.5	5,582.4	0.00	0.00	0.00
13,000.0	90.00	90.53	7,112.1	-2,149.10	651.7	5,646.5	5,681.9	0.00	0.00	0.00
13,100.0	90.00	90.53	7,112.1	-2,149.10	650.8	5,746.5	5,781.4	0.00	0.00	0.00
13,200.0	90.00	90.53	7,112.1	-2,149.09	649.9	5,846.5	5,881.0	0.00	0.00	0.00
13,300.0	90.00	90.53	7,112.1	-2,149.09	648.9	5,946.5	5,980.5	0.00	0.00	0.00
13,400.0	90.00	90.53	7,112.1	-2,149.08	648.0	6,046.5	6,080.0	0.00	0.00	0.00
13,500.0	90.00	90.53	7,112.1	-2,149.08	647.1	6,146.5	6,179.6	0.00	0.00	0.00

# Planning Report



<b>Database:</b>	EDM 5000.1 Single User Db	<b>Local Co-ordinate Reference:</b>	Well FAIRVIEW 9
<b>Company:</b>	EXTRACTION OIL & GAS	<b>TVD Reference:</b>	KB-EST @ 4963.0usft
<b>Project:</b>	WELD COUNTY, COLORADO (NAD 83)	<b>MD Reference:</b>	KB-EST @ 4963.0usft
<b>Site:</b>	NW SW SEC. 5 T2N R68W 6th P.M.	<b>North Reference:</b>	True
<b>Well:</b>	FAIRVIEW 9	<b>Survey Calculation Method:</b>	Minimum Curvature
<b>Wellbore:</b>	ORIGINAL WELLBORE		
<b>Design:</b>	PROPOSAL #2		

Planned Survey										
MD (usft)	Inc (°)	Azi (°)	TVD (usft)	SS (usft)	+N/-S (usft)	+E/-W (usft)	Vertical Section (usft)	Dogleg Rate (°/100usft)	Build Rate (°/100usft)	Turn Rate (°/100usft)
13,600.0	90.00	90.53	7,112.1	-2,149.07	646.2	6,246.5	6,279.1	0.00	0.00	0.00
13,700.0	90.00	90.53	7,112.1	-2,149.07	645.3	6,346.5	6,378.6	0.00	0.00	0.00
13,800.0	90.00	90.53	7,112.1	-2,149.06	644.3	6,446.5	6,478.2	0.00	0.00	0.00
13,900.0	90.00	90.53	7,112.1	-2,149.05	643.4	6,546.5	6,577.7	0.00	0.00	0.00
14,000.0	90.00	90.53	7,112.0	-2,149.05	642.5	6,646.5	6,677.2	0.00	0.00	0.00
14,100.0	90.00	90.53	7,112.0	-2,149.04	641.6	6,746.5	6,776.7	0.00	0.00	0.00
14,200.0	90.00	90.53	7,112.0	-2,149.03	640.7	6,846.5	6,876.3	0.00	0.00	0.00
14,300.0	90.00	90.53	7,112.0	-2,149.02	639.7	6,946.5	6,975.8	0.00	0.00	0.00
14,400.0	90.00	90.53	7,112.0	-2,149.02	638.8	7,046.5	7,075.3	0.00	0.00	0.00
14,500.0	90.00	90.53	7,112.0	-2,149.01	637.9	7,146.4	7,174.9	0.00	0.00	0.00
<b>BHL - FAIRVIEW 9 (P2)</b>										
<b>14,584.7</b>	<b>90.00</b>	<b>90.53</b>	<b>7,112.0</b>	<b>-2,149.00</b>	<b>637.1</b>	<b>7,231.1</b>	<b>7,259.2</b>	<b>0.00</b>	<b>0.00</b>	<b>0.00</b>

Formations						
MD (usft)	TVD (usft)	Name	Lithology	Dip (°)	Dip Direction (°)	
3,073.7	3,024.0	PARKMAN		0.00		
3,910.0	3,842.0	SUSSEX		0.00		
4,481.7	4,402.0	SHANNON		0.00		
6,729.0	6,647.0	SHARON SPRINGS		0.00		
6,789.8	6,706.0	NIOBRARA		0.00		
7,279.3	7,062.0	FORT HAYS		0.00		
7,413.2	7,102.0	CODELL		0.00		

Plan Annotations				
MD (usft)	TVD (usft)	Local Coordinates		Comment
		+N/-S (usft)	+E/-W (usft)	
400.0	400.0	0.0	0.0	START NUDGE (2°/100ft BUR)
1,000.2	995.8	54.3	-31.2	EOB TO 12° INC
4,320.1	4,243.1	653.3	-374.6	END OF TANGENT
4,920.4	4,839.0	707.7	-405.8	EOD TO VERTICAL
6,620.4	6,539.0	707.7	-405.8	KOP (10°/100ft BUR)
7,520.4	7,112.0	702.4	167.1	LANDING PNT - FAIRVIEW 9 (P2)
14,584.7	7,112.0	637.1	7,231.1	BHL - FAIRVIEW 9 (P2)