

EXTRACTION OIL & GAS

WELD COUNTY, COLORADO (NAD 83)

NW SW SEC. 5 T2N R68W 6th P.M.

FAIRVIEW 8

ORIGINAL WELLBORE

10 August, 2015

Plan: PROPOSAL #3

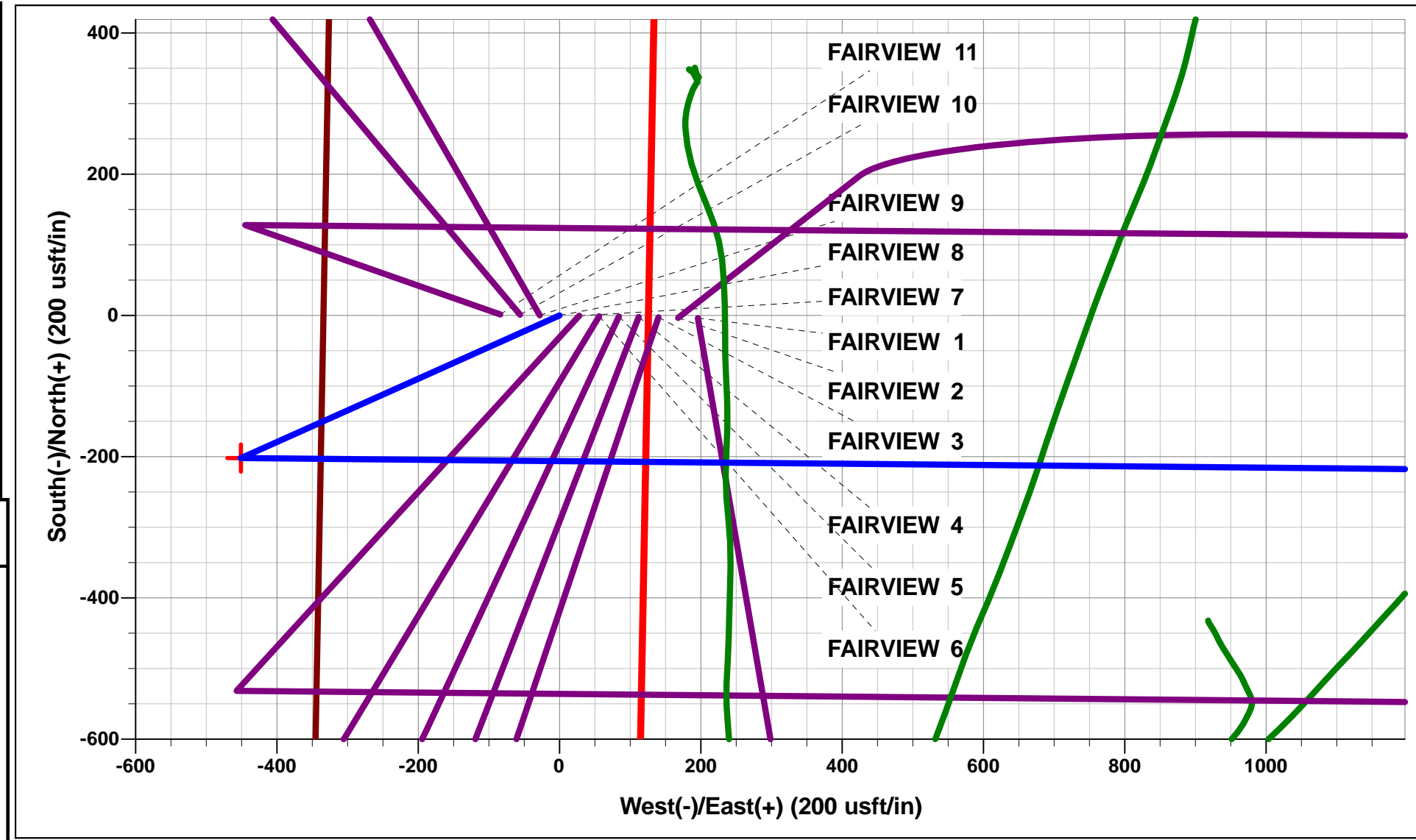




Project: WELD COUNTY, COLORADO (NAD 83)
Site: NW SW SEC. 5 T2N R68W 6th P.M.
Well: FAIRVIEW 8
Wellbore: ORIGINAL WELLBORE
Design: PROPOSAL #3

ANNOTATIONS										
TVD	MD	Inc	Azi	+N/-S	+E/-W	VSect	Dep	Annotation		
550.0	550.0	0.00	0.00	0.0	0.0	0.0	0.0	START NUDGE (2°/100ft BUR)		
1145.6	1150.0	12.00	245.87	-25.6	-57.1	-56.1	62.6	EOB TO 12° INC		
2880.4	2923.5	12.00	245.87	-176.3	-393.7	-386.7	431.4	END OF TANGENT		
3476.0	3523.5	0.00	245.87	-201.9	-450.8	-442.8	494.0	EOD TO VERTICAL		
6249.0	6296.5	0.00	0.00	-201.9	-450.8	-442.8	494.0	KOP (10°/100ft BUR)		
6822.0	7196.6	90.00	90.54	-207.3	122.2	130.0	1067.0	LANDING PNT - FAIRVIEW 8 (P3)		
6822.0	14268.2	90.00	90.53	-272.9	7193.4	7198.6	8138.5	BHL - FAIRVIEW 8 (P3)		

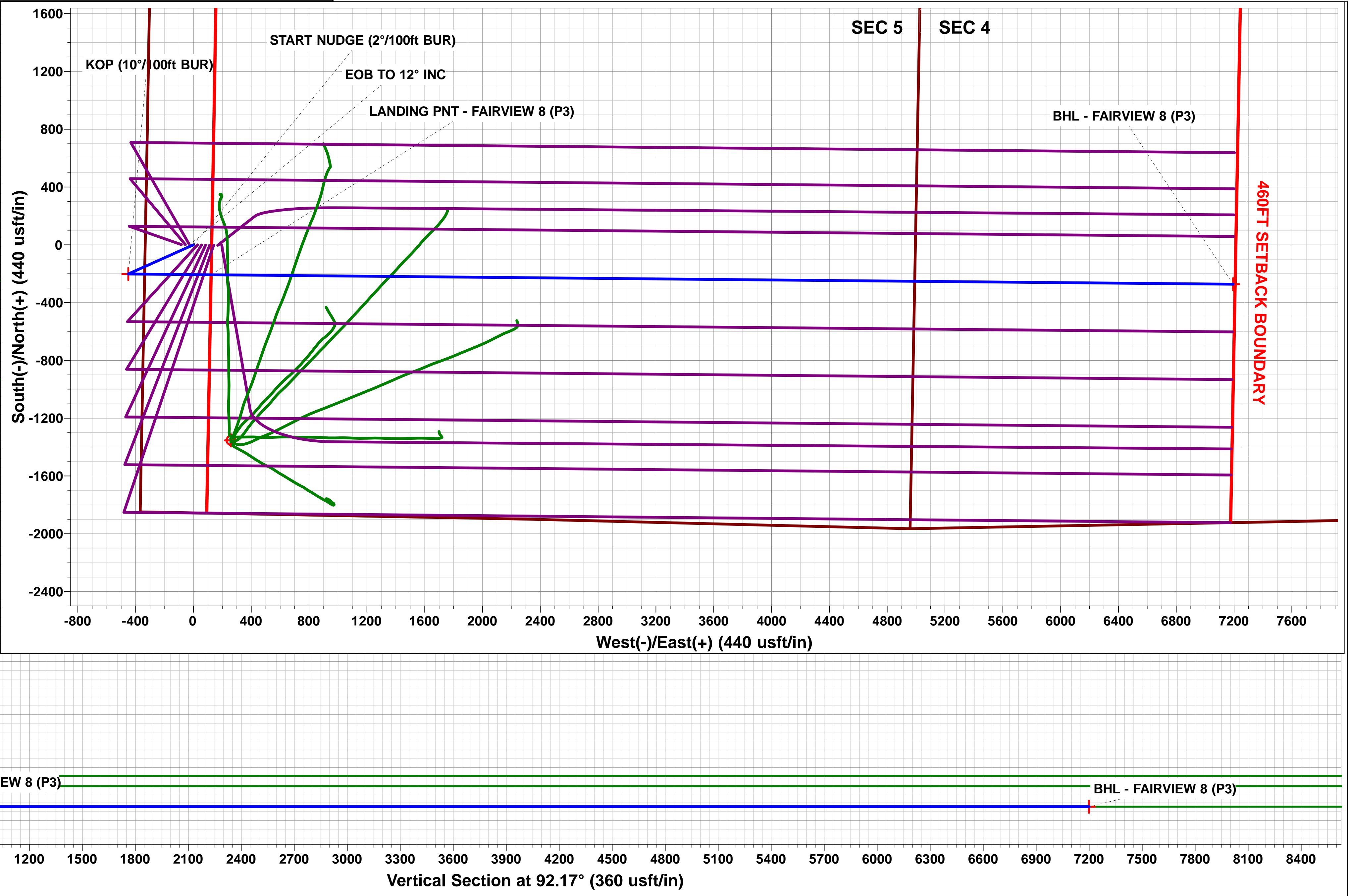
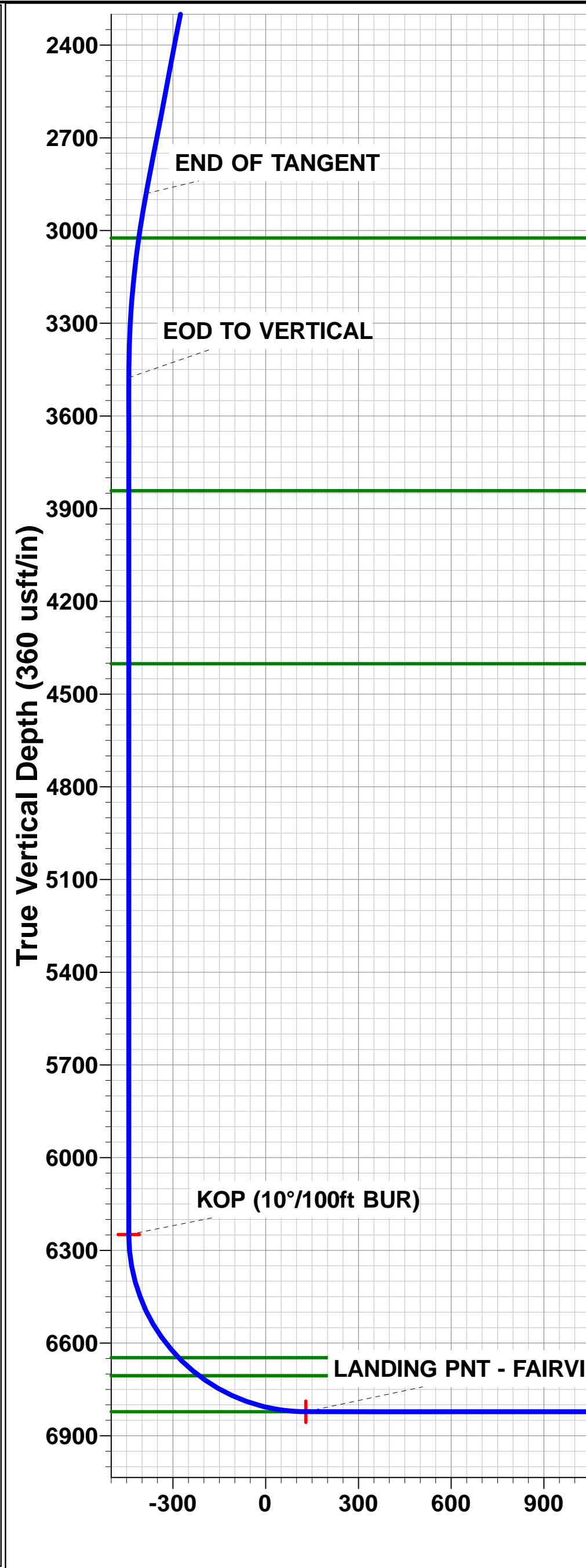
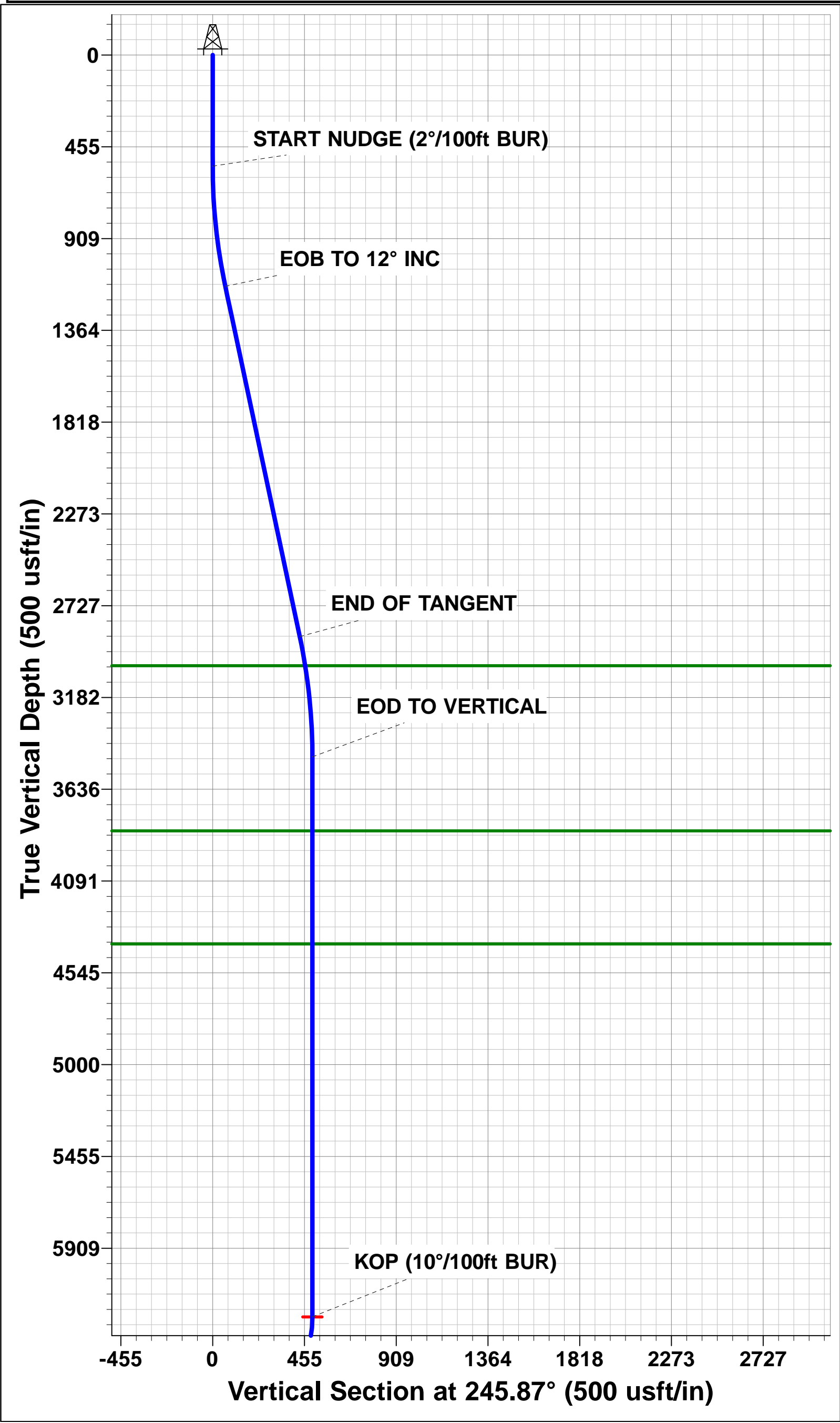
WELLBORE TARGET DETAILS (LAT/LONG)						
Name	TVD	+N/-S	+E/-W	Latitude	Longitude	
KOP - FAIRVIEW 8 (P3)	6249.0	-201.9	-450.8	40.165212	-105.036981	
LANDING PNT - FAIRVIEW 8 (P3)	6822.0	-207.3	122.1	40.165197	-105.034931	
BHL - FAIRVIEW 8 (P3)	6822.0	-272.9	7193.4	40.165014	-105.009630	



FORMATION TOP DETAILS		
TVDPath	MDPath	Formation
3024.0	3069.6	PARKMAN
3842.0	3889.5	SUSSEX
4402.0	4449.5	SHANNON
6647.0	6736.5	SHARON SPRINGS
6706.0	6825.5	NIOBRARA
6822.0	7196.6	NIO B TARGET

Azimuths to True North
Magnetic North: 8.53°

Magnetic Field
Strength: 52451.2snT
Dip Angle: 66.67°
Date: 10/08/2015
Model: IGRF2015



Planning Report



Database:	EDM 5000.1 Single User Db	Local Co-ordinate Reference:	Well FAIRVIEW 8
Company:	EXTRACTION OIL & GAS	TVD Reference:	KB-EST @ 4963.0usft
Project:	WELD COUNTY, COLORADO (NAD 83)	MD Reference:	KB-EST @ 4963.0usft
Site:	NW SW SEC. 5 T2N R68W 6th P.M.	North Reference:	True
Well:	FAIRVIEW 8	Survey Calculation Method:	Minimum Curvature
Wellbore:	ORIGINAL WELLBORE		
Design:	PROPOSAL #3		

Project	WELD COUNTY, COLORADO (NAD 83)		
Map System:	US State Plane 1983	System Datum:	Mean Sea Level
Geo Datum:	North American Datum 1983		
Map Zone:	Colorado Northern Zone		Using geodetic scale factor

Site	NW SW SEC. 5 T2N R68W 6th P.M.		
Site Position:		Northing:	1,303,569.20 usft
From:	Lat/Long	Easting:	3,130,047.26 usft
Position Uncertainty:	0.0 usft	Slot Radius:	1.10000 ft
		Latitude:	40.165756
		Longitude:	-105.034667
		Grid Convergence:	0.30 °

Well	FAIRVIEW 8		
Well Position	+N/-S	3.6 usft	Northing:
	+E/-W	-195.9 usft	Easting:
Position Uncertainty	0.0 usft		Wellhead Elevation:
			Latitude:
			Longitude:
			Ground Level:

Wellbore	ORIGINAL WELLBORE				
Magnetics	Model Name	Sample Date	Declination (°)	Dip Angle (°)	Field Strength (nT)
	IGRF2015	10/08/2015	8.53	66.67	52,451

Design	PROPOSAL #3				
Audit Notes:					
Version:	Phase:	PROTOTYPE	Tie On Depth:	0.0	
Vertical Section:	Depth From (TVD) (usft)	+N/-S (usft)	+E/-W (usft)	Direction (°)	
	0.0	0.0	0.0	92.17	

Plan Sections											
MD (usft)	Inc (°)	Azi (°)	Vertical Depth	SS (usft)	+N/-S (usft)	+E/-W (usft)	Dogleg Rate (°/100usf)	Build Rate (°/100usf)	Turn Rate (°/100usf)	TFO (°)	Target
0.0	0.00	0.00	0.0	-4,963.0	0.0	0.0	0.00	0.00	0.00	0.00	
550.0	0.00	0.00	550.0	-4,413.0	0.0	0.0	0.00	0.00	0.00	0.00	
1,150.0	12.00	245.87	1,145.7	-3,817.3	-25.6	-57.1	2.00	2.00	0.00	245.87	
2,923.5	12.00	245.87	2,880.3	-2,082.7	-176.3	-393.7	0.00	0.00	0.00	0.00	
3,523.5	0.00	0.00	3,476.0	-1,487.0	-201.9	-450.8	2.00	-2.00	0.00	180.00	
6,296.5	0.00	0.00	6,249.0	1,286.0	-201.9	-450.8	0.00	0.00	0.00	0.00	KOP - FAIRVIEW 8
7,196.6	90.00	90.54	6,822.0	1,859.0	-207.3	122.1	10.00	10.00	10.06	90.54	LANDING PNT - FAIRVIEW 8
14,268.2	90.00	90.53	6,822.0	1,859.0	-272.9	7,193.4	0.00	0.00	0.00	-65.35	BHL - FAIRVIEW 8

Planning Report



Database:	EDM 5000.1 Single User Db	Local Co-ordinate Reference:	Well FAIRVIEW 8
Company:	EXTRACTION OIL & GAS	TVD Reference:	KB-EST @ 4963.0usft
Project:	WELD COUNTY, COLORADO (NAD 83)	MD Reference:	KB-EST @ 4963.0usft
Site:	NW SW SEC. 5 T2N R68W 6th P.M.	North Reference:	True
Well:	FAIRVIEW 8	Survey Calculation Method:	Minimum Curvature
Wellbore:	ORIGINAL WELLBORE		
Design:	PROPOSAL #3		

Planned Survey										
MD (usft)	Inc (°)	Azi (°)	TVD (usft)	SS (usft)	+N/-S (usft)	+E/-W (usft)	Vertical Section (usft)	Dogleg Rate (°/100usft)	Build Rate (°/100usft)	Turn Rate (°/100usft)
0.0	0.00	0.00	0.0	4,963.00	0.0	0.0	0.0	0.00	0.00	0.00
100.0	0.00	0.00	100.0	4,863.00	0.0	0.0	0.0	0.00	0.00	0.00
200.0	0.00	0.00	200.0	4,763.00	0.0	0.0	0.0	0.00	0.00	0.00
300.0	0.00	0.00	300.0	4,663.00	0.0	0.0	0.0	0.00	0.00	0.00
400.0	0.00	0.00	400.0	4,563.00	0.0	0.0	0.0	0.00	0.00	0.00
500.0	0.00	0.00	500.0	4,463.00	0.0	0.0	0.0	0.00	0.00	0.00
START NUDGE (2°/100ft BUR)										
550.0	0.00	0.00	550.0	4,413.00	0.0	0.0	0.0	0.00	0.00	0.00
600.0	1.00	245.87	600.0	4,363.00	-0.2	-0.4	-0.4	2.00	2.00	0.00
700.0	3.00	245.87	699.9	4,263.07	-1.6	-3.6	-3.5	2.00	2.00	0.00
800.0	5.00	245.87	799.7	4,163.32	-4.5	-9.9	-9.8	2.00	2.00	0.00
900.0	7.00	245.87	899.1	4,063.87	-8.7	-19.5	-19.1	2.00	2.00	0.00
1,000.0	9.00	245.87	998.2	3,964.85	-14.4	-32.2	-31.6	2.00	2.00	0.00
1,100.0	11.00	245.87	1,096.6	3,866.37	-21.5	-48.0	-47.2	2.00	2.00	0.00
EOB TO 12° INC										
1,150.0	12.00	245.87	1,145.6	3,817.38	-25.6	-57.1	-56.1	2.00	2.00	0.00
1,200.0	12.00	245.87	1,194.5	3,768.47	-29.8	-66.6	-65.4	0.00	0.00	0.00
1,300.0	12.00	245.87	1,292.3	3,670.66	-38.3	-85.6	-84.1	0.00	0.00	0.00
1,400.0	12.00	245.87	1,390.2	3,572.84	-46.8	-104.6	-102.7	0.00	0.00	0.00
1,500.0	12.00	245.87	1,488.0	3,475.03	-55.3	-123.6	-121.4	0.00	0.00	0.00
1,600.0	12.00	245.87	1,585.8	3,377.21	-63.8	-142.5	-140.0	0.00	0.00	0.00
1,700.0	12.00	245.87	1,683.6	3,279.40	-72.3	-161.5	-158.6	0.00	0.00	0.00
1,800.0	12.00	245.87	1,781.4	3,181.58	-80.8	-180.5	-177.3	0.00	0.00	0.00
1,900.0	12.00	245.87	1,879.2	3,083.77	-89.3	-199.5	-195.9	0.00	0.00	0.00
2,000.0	12.00	245.87	1,977.0	2,985.95	-97.8	-218.4	-214.6	0.00	0.00	0.00
2,100.0	12.00	245.87	2,074.9	2,888.14	-106.3	-237.4	-233.2	0.00	0.00	0.00
2,200.0	12.00	245.87	2,172.7	2,790.32	-114.8	-256.4	-251.8	0.00	0.00	0.00
2,300.0	12.00	245.87	2,270.5	2,692.51	-123.3	-275.4	-270.5	0.00	0.00	0.00
2,400.0	12.00	245.87	2,368.3	2,594.70	-131.8	-294.3	-289.1	0.00	0.00	0.00
2,500.0	12.00	245.87	2,466.1	2,496.88	-140.3	-313.3	-307.8	0.00	0.00	0.00
2,600.0	12.00	245.87	2,563.9	2,399.07	-148.8	-332.3	-326.4	0.00	0.00	0.00
2,700.0	12.00	245.87	2,661.7	2,301.25	-157.3	-351.3	-345.0	0.00	0.00	0.00
2,800.0	12.00	245.87	2,759.6	2,203.44	-165.8	-370.2	-363.7	0.00	0.00	0.00
2,900.0	12.00	245.87	2,857.4	2,105.62	-174.3	-389.2	-382.3	0.00	0.00	0.00
END OF TANGENT										
2,923.5	12.00	245.87	2,880.4	2,082.64	-176.3	-393.7	-386.7	0.00	0.00	0.00
3,000.0	10.47	245.87	2,955.4	2,007.60	-182.4	-407.3	-400.1	2.00	-2.00	0.00
PARKMAN										
3,069.6	9.08	245.87	3,024.0	1,939.00	-187.2	-418.1	-410.7	2.00	-2.00	0.00
3,100.0	8.47	245.87	3,054.0	1,908.97	-189.1	-422.3	-414.8	2.00	-2.00	0.00
3,200.0	6.47	245.87	3,153.2	1,809.83	-194.4	-434.2	-426.5	2.00	-2.00	0.00
3,300.0	4.47	245.87	3,252.7	1,710.29	-198.3	-442.9	-435.0	2.00	-2.00	0.00
3,400.0	2.47	245.87	3,352.5	1,610.47	-200.8	-448.4	-440.4	2.00	-2.00	0.00
3,500.0	0.47	245.87	3,452.5	1,510.51	-201.9	-450.7	-442.7	2.00	-2.00	0.00
EOD TO VERTICAL										
3,523.5	0.00	245.87	3,476.0	1,487.01	-201.9	-450.8	-442.8	2.00	-2.00	0.00
3,600.0	0.00	0.00	3,552.5	1,410.51	-201.9	-450.8	-442.8	0.00	0.00	0.00
3,700.0	0.00	0.00	3,652.5	1,310.51	-201.9	-450.8	-442.8	0.00	0.00	0.00
3,800.0	0.00	0.00	3,752.5	1,210.51	-201.9	-450.8	-442.8	0.00	0.00	0.00
SUSSEX										
3,889.5	0.00	0.00	3,842.0	1,121.00	-201.9	-450.8	-442.8	0.00	0.00	0.00
3,900.0	0.00	0.00	3,852.5	1,110.51	-201.9	-450.8	-442.8	0.00	0.00	0.00
4,000.0	0.00	0.00	3,952.5	1,010.51	-201.9	-450.8	-442.8	0.00	0.00	0.00

Database:	EDM 5000.1 Single User Db	Local Co-ordinate Reference:	Well FAIRVIEW 8
Company:	EXTRACTION OIL & GAS	TVD Reference:	KB-EST @ 4963.0usft
Project:	WELD COUNTY, COLORADO (NAD 83)	MD Reference:	KB-EST @ 4963.0usft
Site:	NW SW SEC. 5 T2N R68W 6th P.M.	North Reference:	True
Well:	FAIRVIEW 8	Survey Calculation Method:	Minimum Curvature
Wellbore:	ORIGINAL WELLBORE		
Design:	PROPOSAL #3		

Planned Survey

MD (usft)	Inc (°)	Azi (°)	TVD (usft)	SS (usft)	+N/-S (usft)	+E/-W (usft)	Vertical Section (usft)	Dogleg Rate (°/100usft)	Build Rate (°/100usft)	Turn Rate (°/100usft)
4,100.0	0.00	0.00	4,052.5	910.51	-201.9	-450.8	-442.8	0.00	0.00	0.00
4,200.0	0.00	0.00	4,152.5	810.51	-201.9	-450.8	-442.8	0.00	0.00	0.00
4,300.0	0.00	0.00	4,252.5	710.51	-201.9	-450.8	-442.8	0.00	0.00	0.00
4,400.0	0.00	0.00	4,352.5	610.51	-201.9	-450.8	-442.8	0.00	0.00	0.00
SHANNON										
4,449.5	0.00	0.00	4,402.0	561.00	-201.9	-450.8	-442.8	0.00	0.00	0.00
4,500.0	0.00	0.00	4,452.5	510.51	-201.9	-450.8	-442.8	0.00	0.00	0.00
4,600.0	0.00	0.00	4,552.5	410.51	-201.9	-450.8	-442.8	0.00	0.00	0.00
4,700.0	0.00	0.00	4,652.5	310.51	-201.9	-450.8	-442.8	0.00	0.00	0.00
4,800.0	0.00	0.00	4,752.5	210.51	-201.9	-450.8	-442.8	0.00	0.00	0.00
4,900.0	0.00	0.00	4,852.5	110.51	-201.9	-450.8	-442.8	0.00	0.00	0.00
5,000.0	0.00	0.00	4,952.5	10.51	-201.9	-450.8	-442.8	0.00	0.00	0.00
5,100.0	0.00	0.00	5,052.5	-89.49	-201.9	-450.8	-442.8	0.00	0.00	0.00
5,200.0	0.00	0.00	5,152.5	-189.49	-201.9	-450.8	-442.8	0.00	0.00	0.00
5,300.0	0.00	0.00	5,252.5	-289.49	-201.9	-450.8	-442.8	0.00	0.00	0.00
5,400.0	0.00	0.00	5,352.5	-389.49	-201.9	-450.8	-442.8	0.00	0.00	0.00
5,500.0	0.00	0.00	5,452.5	-489.49	-201.9	-450.8	-442.8	0.00	0.00	0.00
5,600.0	0.00	0.00	5,552.5	-589.49	-201.9	-450.8	-442.8	0.00	0.00	0.00
5,700.0	0.00	0.00	5,652.5	-689.49	-201.9	-450.8	-442.8	0.00	0.00	0.00
5,800.0	0.00	0.00	5,752.5	-789.49	-201.9	-450.8	-442.8	0.00	0.00	0.00
5,900.0	0.00	0.00	5,852.5	-889.49	-201.9	-450.8	-442.8	0.00	0.00	0.00
6,000.0	0.00	0.00	5,952.5	-989.49	-201.9	-450.8	-442.8	0.00	0.00	0.00
6,100.0	0.00	0.00	6,052.5	-1,089.49	-201.9	-450.8	-442.8	0.00	0.00	0.00
6,200.0	0.00	0.00	6,152.5	-1,189.49	-201.9	-450.8	-442.8	0.00	0.00	0.00
KOP (10°/100ft BUR)										
6,296.5	0.00	0.00	6,249.0	-1,285.99	-201.9	-450.8	-442.8	0.00	0.00	0.00
6,300.0	0.35	90.54	6,252.5	-1,289.49	-201.9	-450.8	-442.8	9.96	9.96	0.00
6,400.0	10.35	90.54	6,351.9	-1,388.93	-202.0	-441.5	-433.5	10.00	10.00	0.00
6,500.0	20.35	90.54	6,448.2	-1,485.24	-202.2	-415.1	-407.1	10.00	10.00	0.00
6,600.0	30.35	90.54	6,538.5	-1,575.50	-202.6	-372.3	-364.4	10.00	10.00	0.00
6,700.0	40.35	90.54	6,620.0	-1,656.96	-203.2	-314.5	-306.6	10.00	10.00	0.00
SHARON SPRINGS										
6,736.5	43.99	90.54	6,647.0	-1,684.00	-203.4	-290.0	-282.1	10.00	10.00	0.00
6,800.0	50.34	90.54	6,690.2	-1,727.15	-203.8	-243.5	-235.6	10.00	10.00	0.00
NIOBRARA										
6,825.5	52.90	90.54	6,706.0	-1,743.00	-204.0	-223.5	-215.6	10.00	10.00	0.00
6,900.0	60.34	90.54	6,746.9	-1,783.94	-204.6	-161.3	-153.5	10.00	10.00	0.00
7,000.0	70.34	90.54	6,788.6	-1,825.61	-205.5	-70.6	-62.7	10.00	10.00	0.00
7,100.0	80.34	90.54	6,813.9	-1,850.88	-206.4	26.0	33.8	10.00	10.00	0.00
LANDING PNT - FAIRVIEW 8 (P3) - NIO B TARGET										
7,196.6	90.00	90.54	6,822.0	-1,859.00	-207.3	122.1	129.9	10.00	10.00	0.00
7,200.0	90.00	90.54	6,822.0	-1,859.00	-207.3	125.6	133.4	0.00	0.00	0.00
7,300.0	90.00	90.54	6,822.0	-1,859.00	-208.2	225.6	233.3	0.00	0.00	0.00
7,400.0	90.00	90.54	6,822.0	-1,859.01	-209.2	325.6	333.3	0.00	0.00	0.00
7,500.0	90.00	90.54	6,822.0	-1,859.01	-210.1	425.6	433.2	0.00	0.00	0.00
7,600.0	90.00	90.54	6,822.0	-1,859.02	-211.1	525.6	533.2	0.00	0.00	0.00
7,700.0	90.00	90.54	6,822.0	-1,859.02	-212.0	625.6	633.1	0.00	0.00	0.00
7,800.0	90.00	90.54	6,822.0	-1,859.03	-212.9	725.6	733.1	0.00	0.00	0.00
7,900.0	90.00	90.54	6,822.0	-1,859.03	-213.9	825.6	833.1	0.00	0.00	0.00
8,000.0	90.00	90.54	6,822.0	-1,859.03	-214.8	925.5	933.0	0.00	0.00	0.00
8,100.0	90.00	90.54	6,822.0	-1,859.04	-215.7	1,025.5	1,033.0	0.00	0.00	0.00
8,200.0	90.00	90.54	6,822.0	-1,859.04	-216.7	1,125.5	1,132.9	0.00	0.00	0.00
8,300.0	90.00	90.54	6,822.0	-1,859.04	-217.6	1,225.5	1,232.9	0.00	0.00	0.00

Planning Report



Database:	EDM 5000.1 Single User Db	Local Co-ordinate Reference:	Well FAIRVIEW 8
Company:	EXTRACTION OIL & GAS	TVD Reference:	KB-EST @ 4963.0usft
Project:	WELD COUNTY, COLORADO (NAD 83)	MD Reference:	KB-EST @ 4963.0usft
Site:	NW SW SEC. 5 T2N R68W 6th P.M.	North Reference:	True
Well:	FAIRVIEW 8	Survey Calculation Method:	Minimum Curvature
Wellbore:	ORIGINAL WELLBORE		
Design:	PROPOSAL #3		

Planned Survey										
MD (usft)	Inc (°)	Azi (°)	TVD (usft)	SS (usft)	+N/-S (usft)	+E/-W (usft)	Vertical Section (usft)	Dogleg Rate (°/100usft)	Build Rate (°/100usft)	Turn Rate (°/100usft)
8,400.0	90.00	90.54	6,822.0	-1,859.05	-218.5	1,325.5	1,332.9	0.00	0.00	0.00
8,500.0	90.00	90.54	6,822.1	-1,859.05	-219.5	1,425.5	1,432.8	0.00	0.00	0.00
8,600.0	90.00	90.54	6,822.1	-1,859.05	-220.4	1,525.5	1,532.8	0.00	0.00	0.00
8,700.0	90.00	90.54	6,822.1	-1,859.06	-221.3	1,625.5	1,632.7	0.00	0.00	0.00
8,800.0	90.00	90.53	6,822.1	-1,859.06	-222.3	1,725.5	1,732.7	0.00	0.00	0.00
8,900.0	90.00	90.53	6,822.1	-1,859.06	-223.2	1,825.5	1,832.7	0.00	0.00	0.00
9,000.0	90.00	90.53	6,822.1	-1,859.06	-224.1	1,925.5	1,932.6	0.00	0.00	0.00
9,100.0	90.00	90.53	6,822.1	-1,859.07	-225.1	2,025.5	2,032.6	0.00	0.00	0.00
9,200.0	90.00	90.53	6,822.1	-1,859.07	-226.0	2,125.5	2,132.5	0.00	0.00	0.00
9,300.0	90.00	90.53	6,822.1	-1,859.07	-226.9	2,225.5	2,232.5	0.00	0.00	0.00
9,400.0	90.00	90.53	6,822.1	-1,859.07	-227.9	2,325.5	2,332.5	0.00	0.00	0.00
9,500.0	90.00	90.53	6,822.1	-1,859.07	-228.8	2,425.5	2,432.4	0.00	0.00	0.00
9,600.0	90.00	90.53	6,822.1	-1,859.08	-229.7	2,525.5	2,532.4	0.00	0.00	0.00
9,700.0	90.00	90.53	6,822.1	-1,859.08	-230.7	2,625.5	2,632.3	0.00	0.00	0.00
9,800.0	90.00	90.53	6,822.1	-1,859.08	-231.6	2,725.5	2,732.3	0.00	0.00	0.00
9,900.0	90.00	90.53	6,822.1	-1,859.08	-232.5	2,825.5	2,832.2	0.00	0.00	0.00
10,000.0	90.00	90.53	6,822.1	-1,859.08	-233.5	2,925.5	2,932.2	0.00	0.00	0.00
10,100.0	90.00	90.53	6,822.1	-1,859.08	-234.4	3,025.5	3,032.2	0.00	0.00	0.00
10,200.0	90.00	90.53	6,822.1	-1,859.08	-235.3	3,125.5	3,132.1	0.00	0.00	0.00
10,300.0	90.00	90.53	6,822.1	-1,859.08	-236.3	3,225.4	3,232.1	0.00	0.00	0.00
10,400.0	90.00	90.53	6,822.1	-1,859.08	-237.2	3,325.4	3,332.0	0.00	0.00	0.00
10,500.0	90.00	90.53	6,822.1	-1,859.08	-238.1	3,425.4	3,432.0	0.00	0.00	0.00
10,600.0	90.00	90.53	6,822.1	-1,859.08	-239.0	3,525.4	3,532.0	0.00	0.00	0.00
10,700.0	90.00	90.53	6,822.1	-1,859.08	-240.0	3,625.4	3,631.9	0.00	0.00	0.00
10,800.0	90.00	90.53	6,822.1	-1,859.08	-240.9	3,725.4	3,731.9	0.00	0.00	0.00
10,900.0	90.00	90.53	6,822.1	-1,859.08	-241.8	3,825.4	3,831.8	0.00	0.00	0.00
11,000.0	90.00	90.53	6,822.1	-1,859.08	-242.7	3,925.4	3,931.8	0.00	0.00	0.00
11,100.0	90.00	90.53	6,822.1	-1,859.08	-243.7	4,025.4	4,031.8	0.00	0.00	0.00
11,200.0	90.00	90.53	6,822.1	-1,859.08	-244.6	4,125.4	4,131.7	0.00	0.00	0.00
11,300.0	90.00	90.53	6,822.1	-1,859.08	-245.5	4,225.4	4,231.7	0.00	0.00	0.00
11,400.0	90.00	90.53	6,822.1	-1,859.08	-246.5	4,325.4	4,331.6	0.00	0.00	0.00
11,500.0	90.00	90.53	6,822.1	-1,859.08	-247.4	4,425.4	4,431.6	0.00	0.00	0.00
11,600.0	90.00	90.53	6,822.1	-1,859.08	-248.3	4,525.4	4,531.6	0.00	0.00	0.00
11,700.0	90.00	90.53	6,822.1	-1,859.08	-249.2	4,625.4	4,631.5	0.00	0.00	0.00
11,800.0	90.00	90.53	6,822.1	-1,859.08	-250.2	4,725.4	4,731.5	0.00	0.00	0.00
11,900.0	90.00	90.53	6,822.1	-1,859.07	-251.1	4,825.4	4,831.4	0.00	0.00	0.00
12,000.0	90.00	90.53	6,822.1	-1,859.07	-252.0	4,925.4	4,931.4	0.00	0.00	0.00
12,100.0	90.00	90.53	6,822.1	-1,859.07	-252.9	5,025.4	5,031.3	0.00	0.00	0.00
12,200.0	90.00	90.53	6,822.1	-1,859.07	-253.9	5,125.4	5,131.3	0.00	0.00	0.00
12,300.0	90.00	90.53	6,822.1	-1,859.07	-254.8	5,225.4	5,231.3	0.00	0.00	0.00
12,400.0	90.00	90.53	6,822.1	-1,859.07	-255.7	5,325.4	5,331.2	0.00	0.00	0.00
12,500.0	90.00	90.53	6,822.1	-1,859.06	-256.6	5,425.4	5,431.2	0.00	0.00	0.00
12,600.0	90.00	90.53	6,822.1	-1,859.06	-257.5	5,525.3	5,531.1	0.00	0.00	0.00
12,700.0	90.00	90.53	6,822.1	-1,859.06	-258.5	5,625.3	5,631.1	0.00	0.00	0.00
12,800.0	90.00	90.53	6,822.1	-1,859.06	-259.4	5,725.3	5,731.1	0.00	0.00	0.00
12,900.0	90.00	90.53	6,822.1	-1,859.05	-260.3	5,825.3	5,831.0	0.00	0.00	0.00
13,000.0	90.00	90.53	6,822.0	-1,859.05	-261.2	5,925.3	5,930.9	0.00	0.00	0.00
13,100.0	90.00	90.53	6,822.0	-1,859.05	-262.2	6,025.3	6,030.9	0.00	0.00	0.00
13,200.0	90.00	90.53	6,822.0	-1,859.04	-263.1	6,125.3	6,130.9	0.00	0.00	0.00
13,300.0	90.00	90.53	6,822.0	-1,859.04	-264.0	6,225.3	6,230.9	0.00	0.00	0.00
13,400.0	90.00	90.53	6,822.0	-1,859.04	-264.9	6,325.3	6,330.8	0.00	0.00	0.00
13,500.0	90.00	90.53	6,822.0	-1,859.03	-265.8	6,425.3	6,430.8	0.00	0.00	0.00
13,600.0	90.00	90.53	6,822.0	-1,859.03	-266.8	6,525.3	6,530.7	0.00	0.00	0.00
13,700.0	90.00	90.53	6,822.0	-1,859.02	-267.7	6,625.3	6,630.7	0.00	0.00	0.00

Database:	EDM 5000.1 Single User Db	Local Co-ordinate Reference:	Well FAIRVIEW 8
Company:	EXTRACTION OIL & GAS	TVD Reference:	KB-EST @ 4963.0usft
Project:	WELD COUNTY, COLORADO (NAD 83)	MD Reference:	KB-EST @ 4963.0usft
Site:	NW SW SEC. 5 T2N R68W 6th P.M.	North Reference:	True
Well:	FAIRVIEW 8	Survey Calculation Method:	Minimum Curvature
Wellbore:	ORIGINAL WELLBORE		
Design:	PROPOSAL #3		

Planned Survey										
MD (usft)	Inc (°)	Azi (°)	TVD (usft)	SS (usft)	+N/-S (usft)	+E/-W (usft)	Vertical Section (usft)	Dogleg Rate (°/100usft)	Build Rate (°/100usft)	Turn Rate (°/100usft)
13,800.0	90.00	90.53	6,822.0	-1,859.02	-268.6	6,725.3	6,730.6	0.00	0.00	0.00
13,900.0	90.00	90.53	6,822.0	-1,859.02	-269.5	6,825.3	6,830.6	0.00	0.00	0.00
14,000.0	90.00	90.53	6,822.0	-1,859.01	-270.4	6,925.3	6,930.6	0.00	0.00	0.00
14,100.0	90.00	90.53	6,822.0	-1,859.01	-271.4	7,025.3	7,030.5	0.00	0.00	0.00
14,200.0	90.00	90.53	6,822.0	-1,859.00	-272.3	7,125.3	7,130.5	0.00	0.00	0.00
BHL - FAIRVIEW 8 (P3)										
14,268.2	90.00	90.53	6,822.0	-1,859.00	-272.9	7,193.4	7,198.6	0.00	0.00	0.00

Formations						
MD (usft)	TVD (usft)	Name	Lithology	Dip (°)	Dip Direction (°)	
3,069.6	3,024.0	PARKMAN		0.00		
3,889.5	3,842.0	SUSSEX		0.00		
4,449.5	4,402.0	SHANNON		0.00		
6,736.5	6,647.0	SHARON SPRINGS		0.00		
6,825.5	6,706.0	NIOBRARA		0.00		
7,196.6	6,822.0	NIO B TARGET		0.00		

Plan Annotations				
MD (usft)	TVD (usft)	Local Coordinates		Comment
		+N/-S (usft)	+E/-W (usft)	
550.0	550.0	0.0	0.0	START NUDGE (2°/100ft BUR)
1,150.0	1,145.6	-25.6	-57.1	EOB TO 12° INC
2,923.5	2,880.4	-176.3	-393.7	END OF TANGENT
3,523.5	3,476.0	-201.9	-450.8	EOD TO VERTICAL
6,296.5	6,249.0	-201.9	-450.8	KOP (10°/100ft BUR)
7,196.6	6,822.0	-207.3	122.2	LANDING PNT - FAIRVIEW 8 (P3)
14,268.2	6,822.0	-272.9	7,193.4	BHL - FAIRVIEW 8 (P3)