

EXTRACTION OIL & GAS

WELD COUNTY, COLORADO (NAD 83)

NW SW SEC. 5 T2N R68W 6th P.M.

FAIRVIEW 6

ORIGINAL WELLBORE

10 August, 2015

Plan: PROPOSAL #3

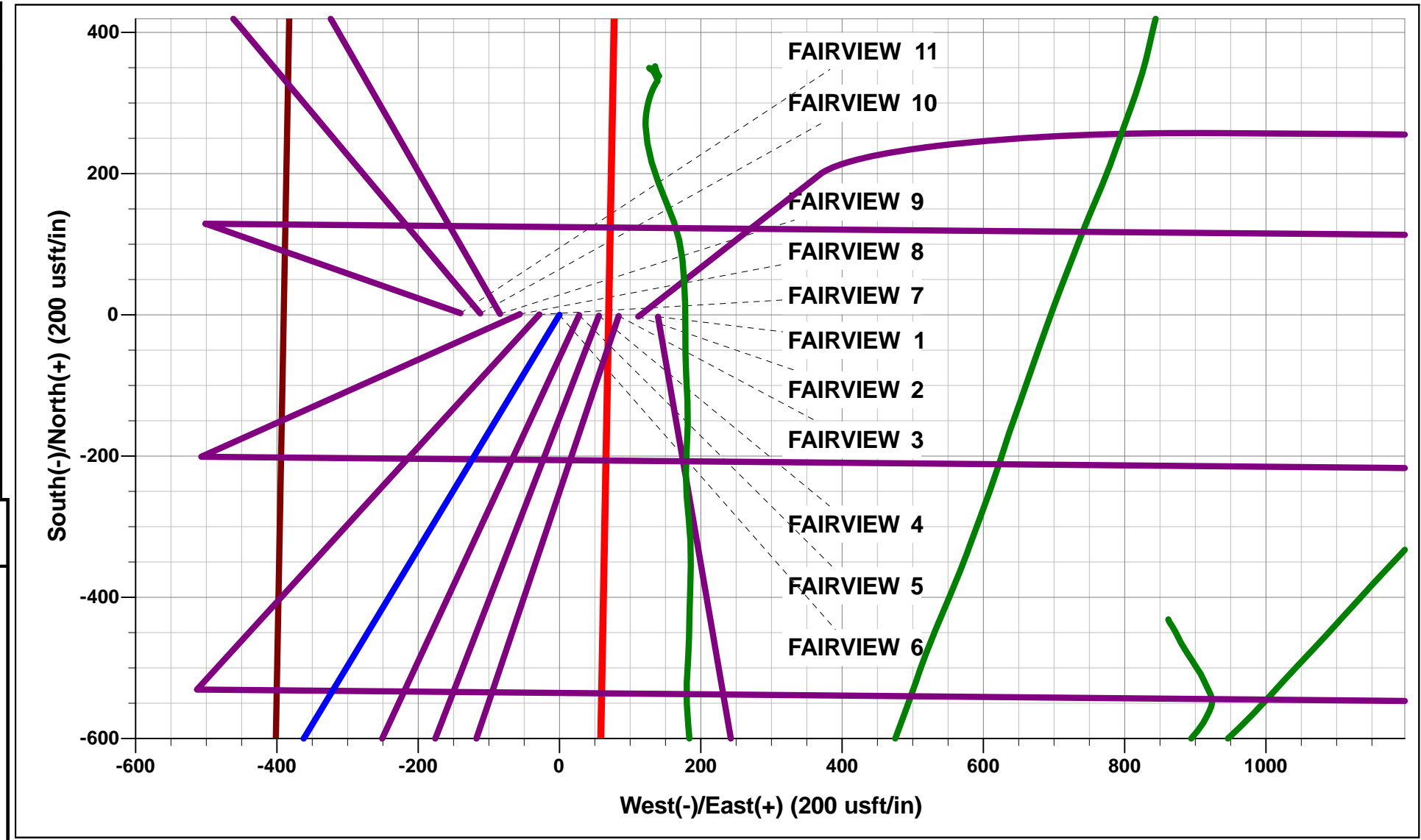




Project: WELD COUNTY, COLORADO (NAD 83)
Site: NW SW SEC. 5 T2N R68W 6th P.M.
Well: FAIRVIEW 6
Wellbore: ORIGINAL WELLBORE
Design: PROPOSAL #3

ANNOTATIONS										
TVD	MD	Inc	Azi	+N/-S	+E/-W	VSect	Dep	Annotation		
850.0	850.0	0.00	0.00	0.0	0.0	0.0	0.0	START NUDGE (2°/100ft BUR)		
1445.5	1449.9	12.00	211.11	-53.6	-32.3	-25.1	62.6	EOB TO 12° INC		
5586.6	5683.4	12.00	211.11	-807.0	-487.0	-378.3	942.6	END OF TANGENT		
6182.0	6283.2	0.00	211.11	-860.6	-519.3	-403.4	1005.1	EOD TO VERTICAL		
6249.0	6350.2	0.00	0.00	-860.6	-519.3	-403.4	1005.1	KOP (10°/100ft BUR)		
6822.0	7250.3	90.00	90.53	-865.9	53.7	165.5	1578.2	LANDING PNT - FAIRVIEW 6 (P3)		
6822.0	14327.1	90.00	90.54	-931.9	7130.2	7190.8	8655.0	BHL - FAIRVIEW 6 (P3)		

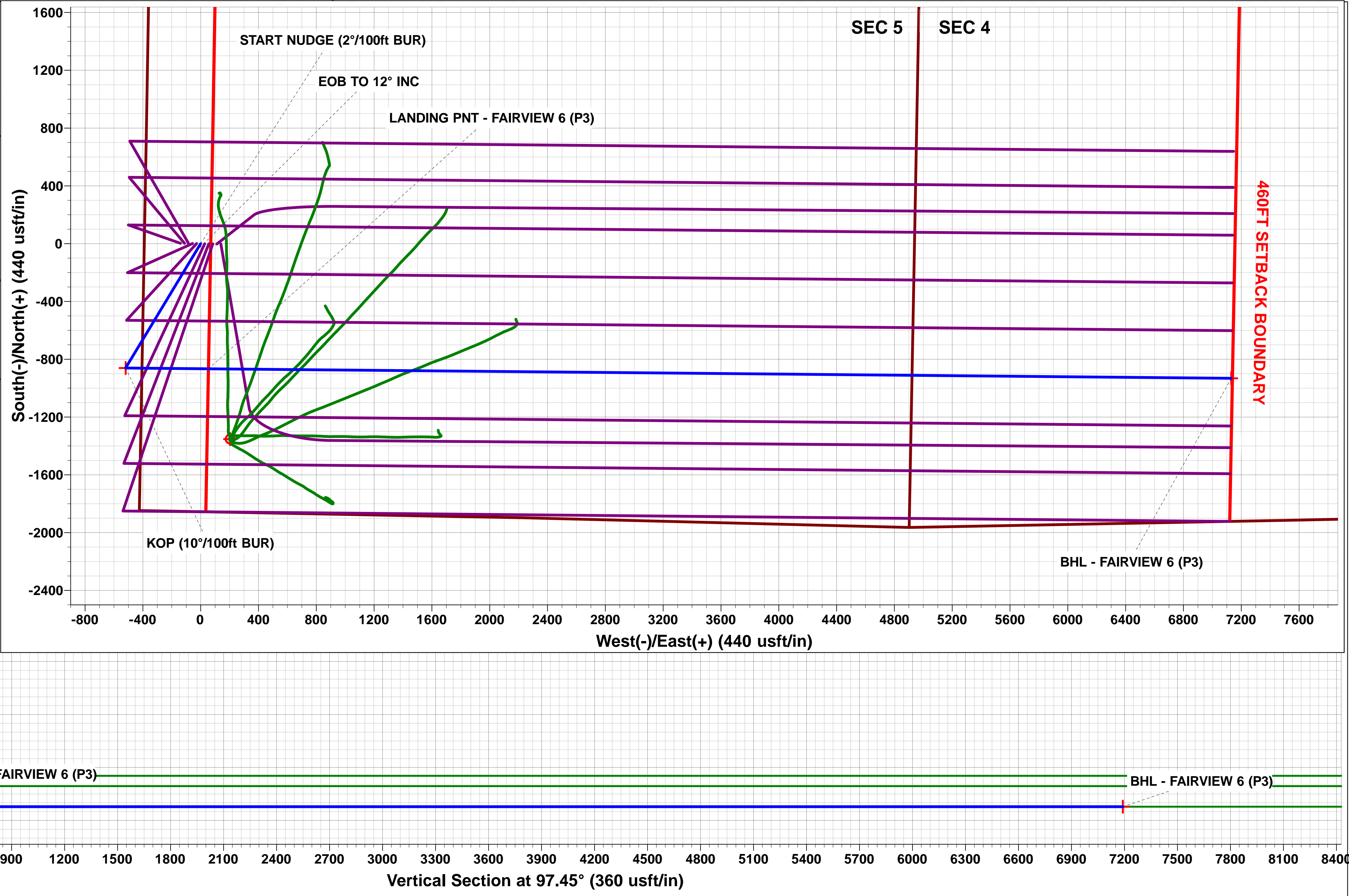
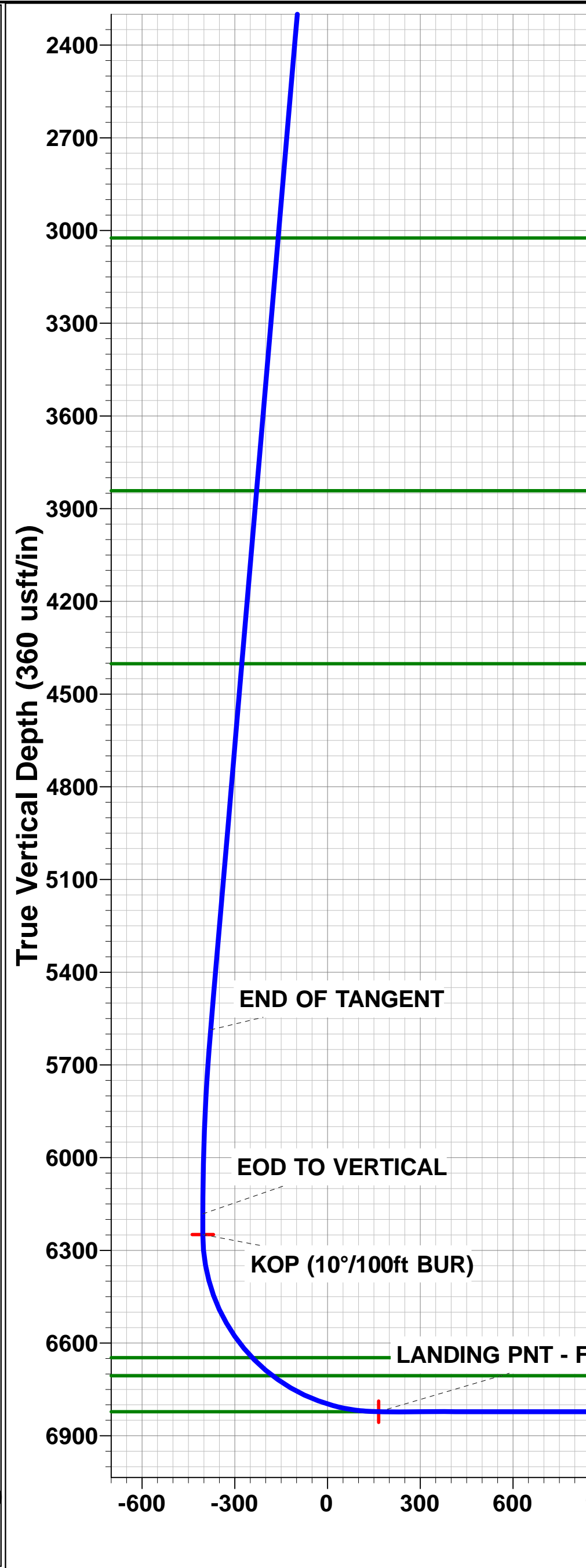
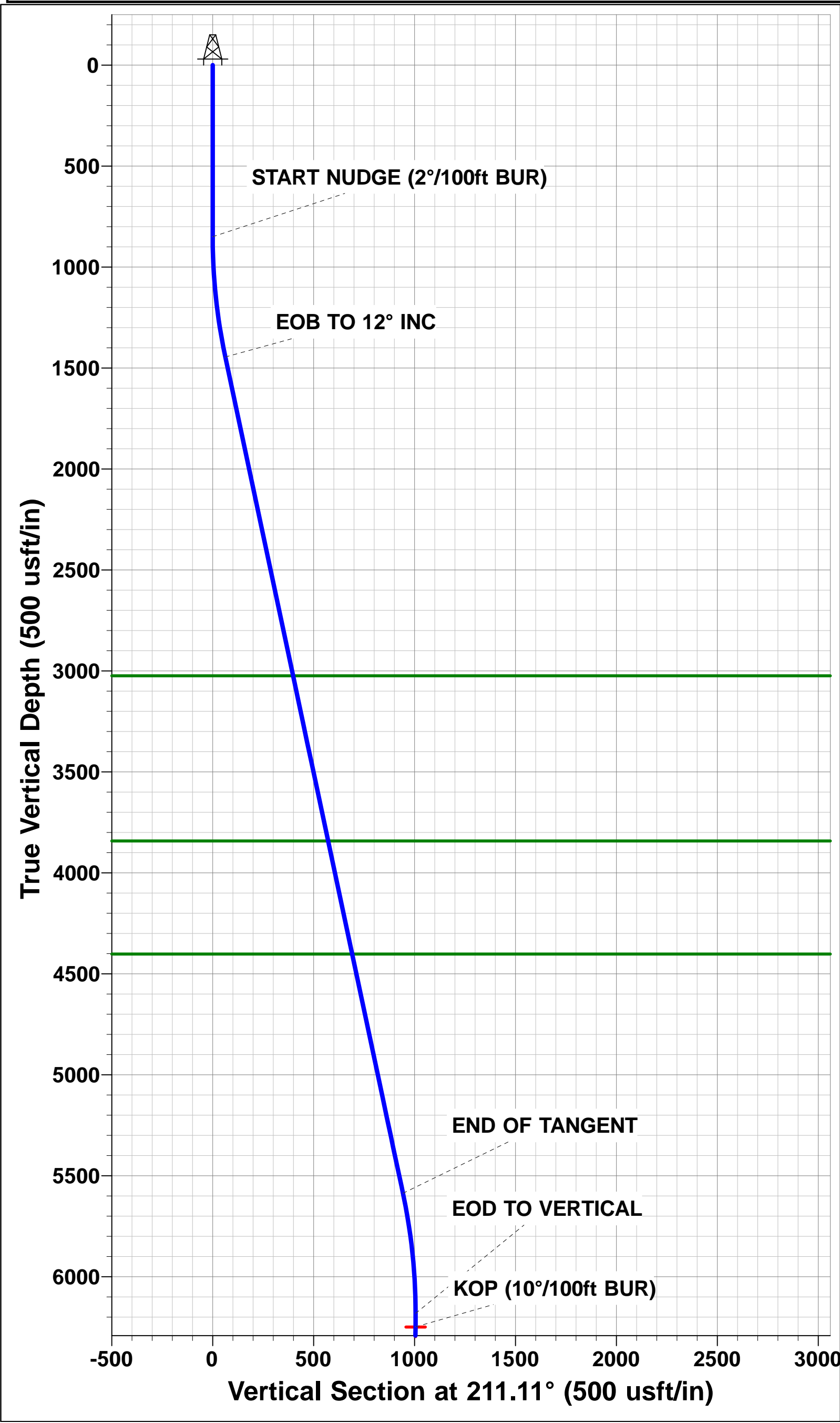
WELLBORE TARGET DETAILS (LAT/LONG)					
Name	TVD	+N/-S	+E/-W	Latitude	Longitude
KOP - FAIRVIEW 6 (P3)	6249.0	-860.6	-519.3	40.163401	-105.037025
LANDING PNT - FAIRVIEW 6 (P3)	6822.0	-865.9	53.7	40.163386	-105.034975
BHL - FAIRVIEW 6 (P3)	6822.0	-931.9	7130.2	40.163202	-105.009656



FORMATION TOP DETAILS		
TVDPath	MDPath	Formation
3024.0	3063.6	PARKMAN
3842.0	3899.9	SUSSEX
4402.0	4472.4	SHANNON
6647.0	6790.2	SHARON SPRINGS
6706.0	6879.2	NIOBRARA
6822.0	7250.3	NIO B TARGET

Azimuths to True North
Magnetic North: 8.53°

Magnetic Field
Strength: 52451.3snT
Dip Angle: 66.67°
Date: 10/08/2015
Model: IGRF2015



Planning Report



Database:	EDM 5000.1 Single User Db	Local Co-ordinate Reference:	Well FAIRVIEW 6
Company:	EXTRACTION OIL & GAS	TVD Reference:	KB-EST @ 4961.0usft
Project:	WELD COUNTY, COLORADO (NAD 83)	MD Reference:	KB-EST @ 4961.0usft
Site:	NW SW SEC. 5 T2N R68W 6th P.M.	North Reference:	True
Well:	FAIRVIEW 6	Survey Calculation Method:	Minimum Curvature
Wellbore:	ORIGINAL WELLBORE		
Design:	PROPOSAL #3		

Project	WELD COUNTY, COLORADO (NAD 83)		
Map System:	US State Plane 1983	System Datum:	Mean Sea Level
Geo Datum:	North American Datum 1983		
Map Zone:	Colorado Northern Zone		Using geodetic scale factor

Site	NW SW SEC. 5 T2N R68W 6th P.M.		
Site Position:		Northing:	1,303,569.20 usft
From:	Lat/Long	Easting:	3,130,047.26 usft
Position Uncertainty:	0.0 usft	Slot Radius:	1.10000 ft
		Latitude:	40.165756
		Longitude:	-105.034667
		Grid Convergence:	0.30 °

Well	FAIRVIEW 6		
Well Position	+N-S	2.5 usft	Northing:
	+E-W	-139.7 usft	Easting:
Position Uncertainty		0.0 usft	Wellhead Elevation:
			Latitude:
			Longitude:
			Ground Level:

Wellbore	ORIGINAL WELLBORE				
Magnetics	Model Name	Sample Date	Declination (°)	Dip Angle (°)	Field Strength (nT)
	IGRF2015	10/08/2015	8.53	66.67	52,451

Design	PROPOSAL #3			
Audit Notes:				
Version:	Phase:	PROTOTYPE	Tie On Depth:	0.0
Vertical Section:	Depth From (TVD) (usft)	+N-S (usft)	+E-W (usft)	Direction (°)
	0.0	0.0	0.0	97.45

Plan Sections											
MD (usft)	Inc (°)	Azi (°)	Vertical Depth	SS (usft)	+N-S (usft)	+E-W (usft)	Dogleg Rate (°/100usf)	Build Rate (°/100usf)	Turn Rate (°/100usf)	TFO (°)	Target
0.0	0.00	0.00	0.0	-4,961.0	0.0	0.0	0.00	0.00	0.00	0.00	
850.0	0.00	0.00	850.0	-4,111.0	0.0	0.0	0.00	0.00	0.00	0.00	
1,449.9	12.00	211.11	1,445.5	-3,515.5	-53.6	-32.3	2.00	2.00	0.00	211.11	
5,683.4	12.00	211.11	5,586.5	625.5	-807.0	-487.0	0.00	0.00	0.00	0.00	
6,283.2	0.00	0.00	6,182.0	1,221.0	-860.6	-519.3	2.00	-2.00	0.00	180.00	
6,350.2	0.00	0.00	6,249.0	1,288.0	-860.6	-519.3	0.00	0.00	0.00	0.00	KOP - FAIRVIEW 6
7,250.3	90.00	90.53	6,822.0	1,861.0	-865.9	53.7	10.00	10.00	10.06	90.53	LANDING PNT - FAIRVIEW 6
14,327.1	90.00	90.54	6,822.0	1,861.0	-931.9	7,130.2	0.00	0.00	0.00	57.98	BHL - FAIRVIEW 6

Database:	EDM 5000.1 Single User Db	Local Co-ordinate Reference:	Well FAIRVIEW 6
Company:	EXTRACTION OIL & GAS	TVD Reference:	KB-EST @ 4961.0usft
Project:	WELD COUNTY, COLORADO (NAD 83)	MD Reference:	KB-EST @ 4961.0usft
Site:	NW SW SEC. 5 T2N R68W 6th P.M.	North Reference:	True
Well:	FAIRVIEW 6	Survey Calculation Method:	Minimum Curvature
Wellbore:	ORIGINAL WELLBORE		
Design:	PROPOSAL #3		

Planned Survey

MD (usft)	Inc (°)	Azi (°)	TVD (usft)	SS (usft)	+N/-S (usft)	+E/-W (usft)	Vertical Section (usft)	Dogleg Rate (°/100usft)	Build Rate (°/100usft)	Turn Rate (°/100usft)
0.0	0.00	0.00	0.0	4,961.00	0.0	0.0	0.0	0.00	0.00	0.00
100.0	0.00	0.00	100.0	4,861.00	0.0	0.0	0.0	0.00	0.00	0.00
200.0	0.00	0.00	200.0	4,761.00	0.0	0.0	0.0	0.00	0.00	0.00
300.0	0.00	0.00	300.0	4,661.00	0.0	0.0	0.0	0.00	0.00	0.00
400.0	0.00	0.00	400.0	4,561.00	0.0	0.0	0.0	0.00	0.00	0.00
500.0	0.00	0.00	500.0	4,461.00	0.0	0.0	0.0	0.00	0.00	0.00
600.0	0.00	0.00	600.0	4,361.00	0.0	0.0	0.0	0.00	0.00	0.00
700.0	0.00	0.00	700.0	4,261.00	0.0	0.0	0.0	0.00	0.00	0.00
800.0	0.00	0.00	800.0	4,161.00	0.0	0.0	0.0	0.00	0.00	0.00
START NUDGE (2°/100ft BUR)										
850.0	0.00	0.00	850.0	4,111.00	0.0	0.0	0.0	0.00	0.00	0.00
900.0	1.00	211.11	900.0	4,061.00	-0.4	-0.2	-0.2	2.00	2.00	0.00
1,000.0	3.00	211.11	999.9	3,961.07	-3.4	-2.0	-1.6	2.00	2.00	0.00
1,100.0	5.00	211.11	1,099.7	3,861.32	-9.3	-5.6	-4.4	2.00	2.00	0.00
1,200.0	7.00	211.11	1,199.1	3,761.87	-18.3	-11.0	-8.6	2.00	2.00	0.00
1,300.0	9.00	211.11	1,298.2	3,662.85	-30.2	-18.2	-14.2	2.00	2.00	0.00
1,400.0	11.00	211.11	1,396.6	3,564.37	-45.1	-27.2	-21.1	2.00	2.00	0.00
EOB TO 12° INC										
1,449.9	12.00	211.11	1,445.5	3,515.47	-53.6	-32.3	-25.1	2.00	2.00	0.00
1,500.0	12.00	211.11	1,494.5	3,466.47	-62.5	-37.7	-29.3	0.00	0.00	0.00
1,600.0	12.00	211.11	1,592.3	3,368.65	-80.3	-48.5	-37.6	0.00	0.00	0.00
1,700.0	12.00	211.11	1,690.2	3,270.84	-98.1	-59.2	-46.0	0.00	0.00	0.00
1,800.0	12.00	211.11	1,788.0	3,173.02	-115.9	-69.9	-54.3	0.00	0.00	0.00
1,900.0	12.00	211.11	1,885.8	3,075.21	-133.7	-80.7	-62.7	0.00	0.00	0.00
2,000.0	12.00	211.11	1,983.6	2,977.39	-151.5	-91.4	-71.0	0.00	0.00	0.00
2,100.0	12.00	211.11	2,081.4	2,879.57	-169.3	-102.1	-79.3	0.00	0.00	0.00
2,200.0	12.00	211.11	2,179.2	2,781.76	-187.1	-112.9	-87.7	0.00	0.00	0.00
2,300.0	12.00	211.11	2,277.1	2,683.94	-204.9	-123.6	-96.0	0.00	0.00	0.00
2,400.0	12.00	211.11	2,374.9	2,586.13	-222.7	-134.4	-104.4	0.00	0.00	0.00
2,500.0	12.00	211.11	2,472.7	2,488.31	-240.5	-145.1	-112.7	0.00	0.00	0.00
2,600.0	12.00	211.11	2,570.5	2,390.50	-258.3	-155.8	-121.1	0.00	0.00	0.00
2,700.0	12.00	211.11	2,668.3	2,292.68	-276.1	-166.6	-129.4	0.00	0.00	0.00
2,800.0	12.00	211.11	2,766.1	2,194.86	-293.9	-177.3	-137.7	0.00	0.00	0.00
2,900.0	12.00	211.11	2,864.0	2,097.05	-311.7	-188.1	-146.1	0.00	0.00	0.00
3,000.0	12.00	211.11	2,961.8	1,999.23	-329.5	-198.8	-154.4	0.00	0.00	0.00
PARKMAN										
3,063.6	12.00	211.11	3,024.0	1,937.00	-340.8	-205.6	-159.7	0.00	0.00	0.00
3,100.0	12.00	211.11	3,059.6	1,901.42	-347.3	-209.5	-162.8	0.00	0.00	0.00
3,200.0	12.00	211.11	3,157.4	1,803.60	-365.1	-220.3	-171.1	0.00	0.00	0.00
3,300.0	12.00	211.11	3,255.2	1,705.78	-382.8	-231.0	-179.5	0.00	0.00	0.00
3,400.0	12.00	211.11	3,353.0	1,607.97	-400.6	-241.8	-187.8	0.00	0.00	0.00
3,500.0	12.00	211.11	3,450.8	1,510.15	-418.4	-252.5	-196.1	0.00	0.00	0.00
3,600.0	12.00	211.11	3,548.7	1,412.34	-436.2	-263.2	-204.5	0.00	0.00	0.00
3,700.0	12.00	211.11	3,646.5	1,314.52	-454.0	-274.0	-212.8	0.00	0.00	0.00
3,800.0	12.00	211.11	3,744.3	1,216.71	-471.8	-284.7	-221.2	0.00	0.00	0.00
SUSSEX										
3,899.9	12.00	211.11	3,842.0	1,119.00	-489.6	-295.4	-229.5	0.00	0.00	0.00
3,900.0	12.00	211.11	3,842.1	1,118.89	-489.6	-295.5	-229.5	0.00	0.00	0.00
4,000.0	12.00	211.11	3,939.9	1,021.07	-507.4	-306.2	-237.8	0.00	0.00	0.00
4,100.0	12.00	211.11	4,037.7	923.26	-525.2	-316.9	-246.2	0.00	0.00	0.00
4,200.0	12.00	211.11	4,135.6	825.44	-543.0	-327.7	-254.5	0.00	0.00	0.00
4,300.0	12.00	211.11	4,233.4	727.63	-560.8	-338.4	-262.9	0.00	0.00	0.00
4,400.0	12.00	211.11	4,331.2	629.81	-578.6	-349.1	-271.2	0.00	0.00	0.00
SHANNON										

Database:	EDM 5000.1 Single User Db	Local Co-ordinate Reference:	Well FAIRVIEW 6
Company:	EXTRACTION OIL & GAS	TVD Reference:	KB-EST @ 4961.0usft
Project:	WELD COUNTY, COLORADO (NAD 83)	MD Reference:	KB-EST @ 4961.0usft
Site:	NW SW SEC. 5 T2N R68W 6th P.M.	North Reference:	True
Well:	FAIRVIEW 6	Survey Calculation Method:	Minimum Curvature
Wellbore:	ORIGINAL WELLBORE		
Design:	PROPOSAL #3		

Planned Survey

MD (usft)	Inc (°)	Azi (°)	TVD (usft)	SS (usft)	+N/-S (usft)	+E/-W (usft)	Vertical Section (usft)	Dogleg Rate (°/100usft)	Build Rate (°/100usft)	Turn Rate (°/100usft)
4,472.4	12.00	211.11	4,402.0	559.00	-591.5	-356.9	-277.3	0.00	0.00	0.00
4,500.0	12.00	211.11	4,429.0	532.00	-596.4	-359.9	-279.6	0.00	0.00	0.00
4,600.0	12.00	211.11	4,526.8	434.18	-614.2	-370.6	-287.9	0.00	0.00	0.00
4,700.0	12.00	211.11	4,624.6	336.36	-632.0	-381.4	-296.2	0.00	0.00	0.00
4,800.0	12.00	211.11	4,722.5	238.55	-649.8	-392.1	-304.6	0.00	0.00	0.00
4,900.0	12.00	211.11	4,820.3	140.73	-667.6	-402.8	-312.9	0.00	0.00	0.00
5,000.0	12.00	211.11	4,918.1	42.92	-685.4	-413.6	-321.3	0.00	0.00	0.00
5,100.0	12.00	211.11	5,015.9	-54.90	-703.2	-424.3	-329.6	0.00	0.00	0.00
5,200.0	12.00	211.11	5,113.7	-152.72	-721.0	-435.1	-338.0	0.00	0.00	0.00
5,300.0	12.00	211.11	5,211.5	-250.53	-738.8	-445.8	-346.3	0.00	0.00	0.00
5,400.0	12.00	211.11	5,309.3	-348.35	-756.6	-456.5	-354.6	0.00	0.00	0.00
5,500.0	12.00	211.11	5,407.2	-446.16	-774.4	-467.3	-363.0	0.00	0.00	0.00
5,600.0	12.00	211.11	5,505.0	-543.98	-792.2	-478.0	-371.3	0.00	0.00	0.00
END OF TANGENT										
5,683.4	12.00	211.11	5,586.6	-625.56	-807.0	-487.0	-378.3	0.00	0.00	0.00
5,700.0	11.66	211.11	5,602.8	-641.80	-809.9	-488.7	-379.6	2.01	-2.01	0.00
5,800.0	9.66	211.11	5,701.1	-740.07	-825.8	-498.3	-387.1	2.00	-2.00	0.00
5,900.0	7.66	211.11	5,799.9	-838.93	-838.7	-506.1	-393.1	2.00	-2.00	0.00
6,000.0	5.66	211.11	5,899.2	-938.24	-848.6	-512.1	-397.8	2.00	-2.00	0.00
6,100.0	3.66	211.11	5,998.9	-1,037.91	-855.6	-516.3	-401.0	2.00	-2.00	0.00
6,200.0	1.66	211.11	6,098.8	-1,137.80	-859.6	-518.7	-402.9	2.00	-2.00	0.00
EOD TO VERTICAL										
6,283.2	0.00	211.11	6,182.0	-1,220.98	-860.6	-519.3	-403.4	2.00	-2.00	0.00
6,300.0	0.00	0.00	6,198.8	-1,237.78	-860.6	-519.3	-403.4	0.00	0.00	0.00
KOP (10°/100ft BUR)										
6,350.2	0.00	0.00	6,249.0	-1,287.98	-860.6	-519.3	-403.4	0.00	0.00	0.00
6,400.0	4.98	90.53	6,298.7	-1,337.72	-860.6	-517.1	-401.2	10.00	10.00	0.00
6,500.0	14.98	90.53	6,397.1	-1,436.08	-860.8	-499.8	-384.1	10.00	10.00	0.00
6,600.0	24.98	90.53	6,490.9	-1,529.95	-861.1	-465.7	-350.2	10.00	10.00	0.00
6,700.0	34.98	90.53	6,577.5	-1,616.46	-861.6	-415.8	-300.7	10.00	10.00	0.00
SHARON SPRINGS										
6,790.2	43.99	90.53	6,647.0	-1,686.00	-862.1	-358.5	-243.8	10.00	10.00	0.00
6,800.0	44.98	90.53	6,654.0	-1,693.00	-862.2	-351.7	-237.0	10.00	10.00	0.00
NIOBRARA										
6,879.2	52.90	90.53	6,706.0	-1,745.00	-862.7	-292.0	-177.7	10.00	10.00	0.00
6,900.0	54.97	90.53	6,718.2	-1,757.23	-862.9	-275.2	-161.0	10.00	10.00	0.00
7,000.0	64.97	90.53	6,768.2	-1,807.20	-863.7	-188.7	-75.2	10.00	10.00	0.00
7,100.0	74.97	90.53	6,802.4	-1,841.41	-864.5	-94.9	18.0	10.00	10.00	0.00
7,200.0	84.97	90.53	6,819.8	-1,858.80	-865.5	3.5	115.6	10.00	10.00	0.00
LANDING PNT - FAIRVIEW 6 (P3) - NIO B TARGET										
7,250.3	90.00	90.53	6,822.0	-1,861.00	-865.9	53.7	165.4	10.00	10.00	0.00
7,300.0	90.00	90.53	6,822.0	-1,861.00	-866.4	103.4	214.8	0.00	0.00	0.00
7,400.0	90.00	90.53	6,822.0	-1,861.00	-867.3	203.4	314.1	0.00	0.00	0.00
7,500.0	90.00	90.53	6,822.0	-1,861.01	-868.2	303.4	413.3	0.00	0.00	0.00
7,600.0	90.00	90.53	6,822.0	-1,861.01	-869.2	403.4	512.6	0.00	0.00	0.00
7,700.0	90.00	90.53	6,822.0	-1,861.01	-870.1	503.4	611.9	0.00	0.00	0.00
7,800.0	90.00	90.53	6,822.0	-1,861.01	-871.0	603.4	711.2	0.00	0.00	0.00
7,900.0	90.00	90.53	6,822.0	-1,861.01	-872.0	703.4	810.4	0.00	0.00	0.00
8,000.0	90.00	90.53	6,822.0	-1,861.01	-872.9	803.4	909.7	0.00	0.00	0.00
8,100.0	90.00	90.53	6,822.0	-1,861.02	-873.8	903.4	1,009.0	0.00	0.00	0.00
8,200.0	90.00	90.53	6,822.0	-1,861.02	-874.7	1,003.4	1,108.3	0.00	0.00	0.00
8,300.0	90.00	90.53	6,822.0	-1,861.02	-875.7	1,103.3	1,207.5	0.00	0.00	0.00
8,400.0	90.00	90.53	6,822.0	-1,861.02	-876.6	1,203.3	1,306.8	0.00	0.00	0.00

Planning Report



Database:	EDM 5000.1 Single User Db	Local Co-ordinate Reference:	Well FAIRVIEW 6
Company:	EXTRACTION OIL & GAS	TVD Reference:	KB-EST @ 4961.0usft
Project:	WELD COUNTY, COLORADO (NAD 83)	MD Reference:	KB-EST @ 4961.0usft
Site:	NW SW SEC. 5 T2N R68W 6th P.M.	North Reference:	True
Well:	FAIRVIEW 6	Survey Calculation Method:	Minimum Curvature
Wellbore:	ORIGINAL WELLBORE		
Design:	PROPOSAL #3		

Planned Survey										
MD (usft)	Inc (°)	Azi (°)	TVD (usft)	SS (usft)	+N/-S (usft)	+E/-W (usft)	Vertical Section (usft)	Dogleg Rate (°/100usft)	Build Rate (°/100usft)	Turn Rate (°/100usft)
8,500.0	90.00	90.53	6,822.0	-1,861.02	-877.5	1,303.3	1,406.1	0.00	0.00	0.00
8,600.0	90.00	90.53	6,822.0	-1,861.02	-878.5	1,403.3	1,505.3	0.00	0.00	0.00
8,700.0	90.00	90.53	6,822.0	-1,861.02	-879.4	1,503.3	1,604.6	0.00	0.00	0.00
8,800.0	90.00	90.53	6,822.0	-1,861.03	-880.3	1,603.3	1,703.9	0.00	0.00	0.00
8,900.0	90.00	90.53	6,822.0	-1,861.03	-881.3	1,703.3	1,803.2	0.00	0.00	0.00
9,000.0	90.00	90.53	6,822.0	-1,861.03	-882.2	1,803.3	1,902.4	0.00	0.00	0.00
9,100.0	90.00	90.53	6,822.0	-1,861.03	-883.1	1,903.3	2,001.7	0.00	0.00	0.00
9,200.0	90.00	90.53	6,822.0	-1,861.03	-884.1	2,003.3	2,101.0	0.00	0.00	0.00
9,300.0	90.00	90.53	6,822.0	-1,861.03	-885.0	2,103.3	2,200.3	0.00	0.00	0.00
9,400.0	90.00	90.53	6,822.0	-1,861.03	-885.9	2,203.3	2,299.5	0.00	0.00	0.00
9,500.0	90.00	90.53	6,822.0	-1,861.03	-886.9	2,303.3	2,398.8	0.00	0.00	0.00
9,600.0	90.00	90.53	6,822.0	-1,861.03	-887.8	2,403.3	2,498.1	0.00	0.00	0.00
9,700.0	90.00	90.53	6,822.0	-1,861.03	-888.7	2,503.3	2,597.4	0.00	0.00	0.00
9,800.0	90.00	90.53	6,822.0	-1,861.04	-889.6	2,603.3	2,696.6	0.00	0.00	0.00
9,900.0	90.00	90.53	6,822.0	-1,861.04	-890.6	2,703.3	2,795.9	0.00	0.00	0.00
10,000.0	90.00	90.53	6,822.0	-1,861.04	-891.5	2,803.3	2,895.2	0.00	0.00	0.00
10,100.0	90.00	90.53	6,822.0	-1,861.04	-892.4	2,903.3	2,994.4	0.00	0.00	0.00
10,200.0	90.00	90.53	6,822.0	-1,861.04	-893.4	3,003.3	3,093.7	0.00	0.00	0.00
10,300.0	90.00	90.53	6,822.0	-1,861.04	-894.3	3,103.3	3,193.0	0.00	0.00	0.00
10,400.0	90.00	90.53	6,822.0	-1,861.04	-895.2	3,203.3	3,292.3	0.00	0.00	0.00
10,500.0	90.00	90.53	6,822.0	-1,861.04	-896.2	3,303.3	3,391.5	0.00	0.00	0.00
10,600.0	90.00	90.53	6,822.0	-1,861.04	-897.1	3,403.2	3,490.8	0.00	0.00	0.00
10,700.0	90.00	90.53	6,822.0	-1,861.04	-898.0	3,503.2	3,590.1	0.00	0.00	0.00
10,800.0	90.00	90.53	6,822.0	-1,861.04	-899.0	3,603.2	3,689.4	0.00	0.00	0.00
10,900.0	90.00	90.53	6,822.0	-1,861.04	-899.9	3,703.2	3,788.6	0.00	0.00	0.00
11,000.0	90.00	90.53	6,822.0	-1,861.04	-900.8	3,803.2	3,887.9	0.00	0.00	0.00
11,100.0	90.00	90.53	6,822.0	-1,861.04	-901.8	3,903.2	3,987.2	0.00	0.00	0.00
11,200.0	90.00	90.53	6,822.0	-1,861.04	-902.7	4,003.2	4,086.4	0.00	0.00	0.00
11,300.0	90.00	90.53	6,822.0	-1,861.04	-903.6	4,103.2	4,185.7	0.00	0.00	0.00
11,400.0	90.00	90.53	6,822.0	-1,861.04	-904.6	4,203.2	4,285.0	0.00	0.00	0.00
11,500.0	90.00	90.53	6,822.0	-1,861.04	-905.5	4,303.2	4,384.3	0.00	0.00	0.00
11,600.0	90.00	90.53	6,822.0	-1,861.04	-906.4	4,403.2	4,483.5	0.00	0.00	0.00
11,700.0	90.00	90.53	6,822.0	-1,861.04	-907.4	4,503.2	4,582.8	0.00	0.00	0.00
11,800.0	90.00	90.53	6,822.0	-1,861.04	-908.3	4,603.2	4,682.1	0.00	0.00	0.00
11,900.0	90.00	90.54	6,822.0	-1,861.03	-909.2	4,703.2	4,781.4	0.00	0.00	0.00
12,000.0	90.00	90.54	6,822.0	-1,861.03	-910.2	4,803.2	4,880.6	0.00	0.00	0.00
12,100.0	90.00	90.54	6,822.0	-1,861.03	-911.1	4,903.2	4,979.9	0.00	0.00	0.00
12,200.0	90.00	90.54	6,822.0	-1,861.03	-912.0	5,003.2	5,079.2	0.00	0.00	0.00
12,300.0	90.00	90.54	6,822.0	-1,861.03	-913.0	5,103.2	5,178.5	0.00	0.00	0.00
12,400.0	90.00	90.54	6,822.0	-1,861.03	-913.9	5,203.2	5,277.7	0.00	0.00	0.00
12,500.0	90.00	90.54	6,822.0	-1,861.03	-914.8	5,303.2	5,377.0	0.00	0.00	0.00
12,600.0	90.00	90.54	6,822.0	-1,861.03	-915.8	5,403.2	5,476.3	0.00	0.00	0.00
12,700.0	90.00	90.54	6,822.0	-1,861.03	-916.7	5,503.2	5,575.5	0.00	0.00	0.00
12,800.0	90.00	90.54	6,822.0	-1,861.03	-917.6	5,603.2	5,674.8	0.00	0.00	0.00
12,900.0	90.00	90.54	6,822.0	-1,861.02	-918.6	5,703.1	5,774.1	0.00	0.00	0.00
13,000.0	90.00	90.54	6,822.0	-1,861.02	-919.5	5,803.1	5,873.4	0.00	0.00	0.00
13,100.0	90.00	90.54	6,822.0	-1,861.02	-920.4	5,903.1	5,972.6	0.00	0.00	0.00
13,200.0	90.00	90.54	6,822.0	-1,861.02	-921.4	6,003.1	6,071.9	0.00	0.00	0.00
13,300.0	90.00	90.54	6,822.0	-1,861.02	-922.3	6,103.1	6,171.2	0.00	0.00	0.00
13,400.0	90.00	90.54	6,822.0	-1,861.02	-923.3	6,203.1	6,270.5	0.00	0.00	0.00
13,500.0	90.00	90.54	6,822.0	-1,861.02	-924.2	6,303.1	6,369.7	0.00	0.00	0.00
13,600.0	90.00	90.54	6,822.0	-1,861.01	-925.1	6,403.1	6,469.0	0.00	0.00	0.00
13,700.0	90.00	90.54	6,822.0	-1,861.01	-926.1	6,503.1	6,568.3	0.00	0.00	0.00
13,800.0	90.00	90.54	6,822.0	-1,861.01	-927.0	6,603.1	6,667.6	0.00	0.00	0.00

Database:	EDM 5000.1 Single User Db	Local Co-ordinate Reference:	Well FAIRVIEW 6
Company:	EXTRACTION OIL & GAS	TVD Reference:	KB-EST @ 4961.0usft
Project:	WELD COUNTY, COLORADO (NAD 83)	MD Reference:	KB-EST @ 4961.0usft
Site:	NW SW SEC. 5 T2N R68W 6th P.M.	North Reference:	True
Well:	FAIRVIEW 6	Survey Calculation Method:	Minimum Curvature
Wellbore:	ORIGINAL WELLBORE		
Design:	PROPOSAL #3		

Planned Survey

MD (usft)	Inc (°)	Azi (°)	TVD (usft)	SS (usft)	+N/-S (usft)	+E/-W (usft)	Vertical Section (usft)	Dogleg Rate (°/100usft)	Build Rate (°/100usft)	Turn Rate (°/100usft)
13,900.0	90.00	90.54	6,822.0	-1,861.01	-927.9	6,703.1	6,766.8	0.00	0.00	0.00
14,000.0	90.00	90.54	6,822.0	-1,861.01	-928.9	6,803.1	6,866.1	0.00	0.00	0.00
14,100.0	90.00	90.54	6,822.0	-1,861.00	-929.8	6,903.1	6,965.4	0.00	0.00	0.00
14,200.0	90.00	90.54	6,822.0	-1,861.00	-930.7	7,003.1	7,064.7	0.00	0.00	0.00
14,300.0	90.00	90.54	6,822.0	-1,861.00	-931.7	7,103.1	7,163.9	0.00	0.00	0.00
BHL - FAIRVIEW 6 (P3)										
14,327.1	90.00	90.54	6,822.0	-1,861.00	-931.9	7,130.2	7,190.8	0.00	0.00	0.00

Formations

MD (usft)	TVD (usft)	Name	Lithology	Dip (°)	Dip Direction (°)
3,063.6	3,024.0	PARKMAN		0.00	
3,899.9	3,842.0	SUSSEX		0.00	
4,472.4	4,402.0	SHANNON		0.00	
6,790.2	6,647.0	SHARON SPRINGS		0.00	
6,879.2	6,706.0	NIOBRARA		0.00	
7,250.3	6,822.0	NIO B TARGET		0.00	

Plan Annotations

MD (usft)	TVD (usft)	Local Coordinates		Comment
		+N/-S (usft)	+E/-W (usft)	
850.0	850.0	0.0	0.0	START NUDGE (2°/100ft BUR)
1,449.9	1,445.5	-53.6	-32.3	EOB TO 12° INC
5,683.4	5,586.6	-807.0	-487.0	END OF TANGENT
6,283.2	6,182.0	-860.6	-519.3	EOD TO VERTICAL
6,350.2	6,249.0	-860.6	-519.3	KOP (10°/100ft BUR)
7,250.3	6,822.0	-865.9	53.7	LANDING PNT - FAIRVIEW 6 (P3)
14,327.1	6,822.0	-931.9	7,130.2	BHL - FAIRVIEW 6 (P3)