

# **EXTRACTION OIL & GAS**

**WELD COUNTY, COLORADO (NAD 83)**

**NW SW SEC. 5 T2N R68W 6th P.M.**

**FAIRVIEW 4**

**ORIGINAL WELLBORE**

**10 August, 2015**

**Plan: PROPOSAL #3**

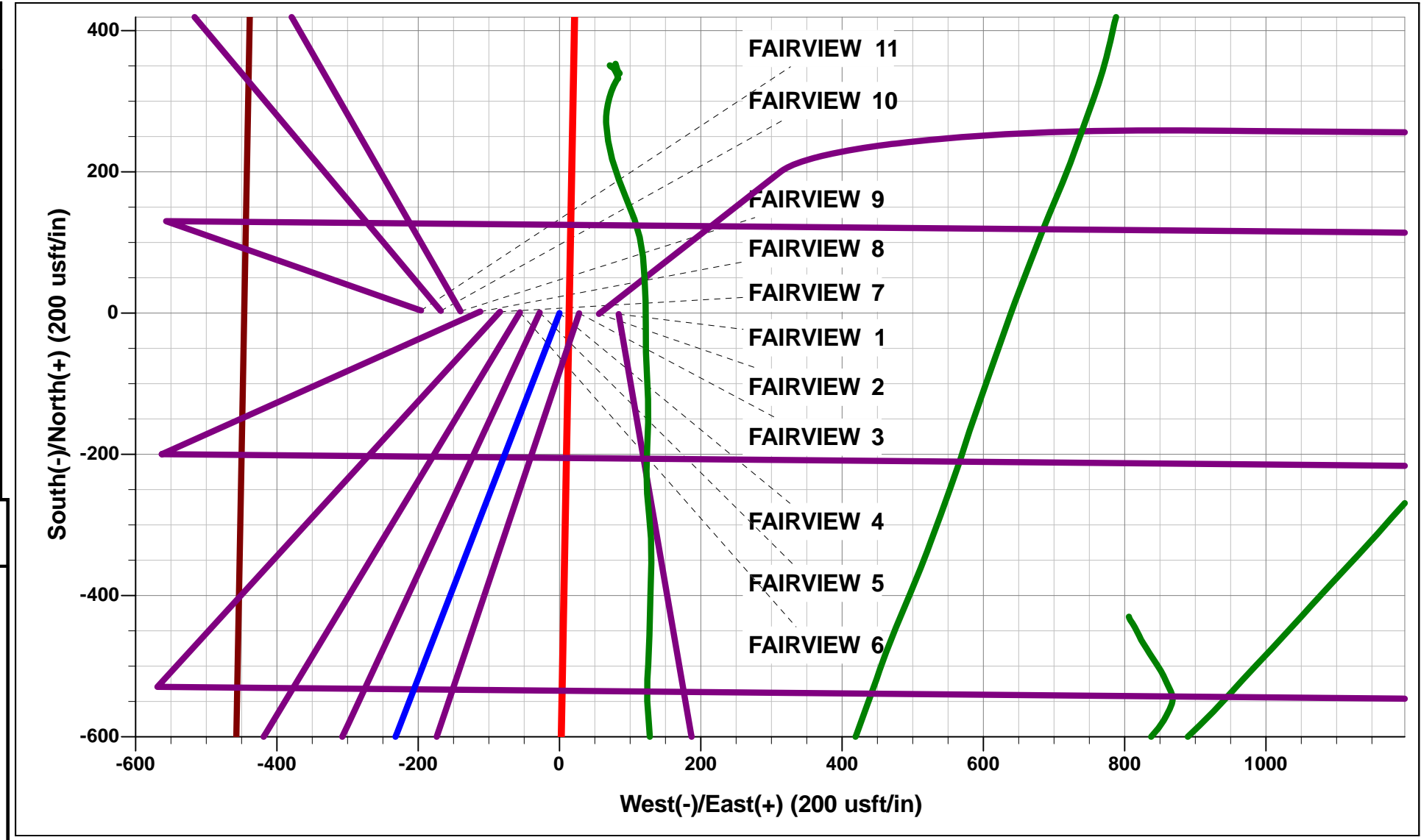




Project: WELD COUNTY, COLORADO (NAD 83)  
Site: NW SW SEC. 5 T2N R68W 6th P.M.  
Well: FAIRVIEW 4  
Wellbore: ORIGINAL WELLBORE  
Design: PROPOSAL #3

ANNOTATIONS									
TVD	MD	Inc	Azi	+N/-S	+E/-W	VSect	Dep	Annotation	
1150.0	1150.0	0.00	0.00	0.0	0.0	0.0	0.0	START NUDGE (2°/100ft BUR)	
1500.0	1500.9	7.02	201.14	-20.0	-7.7	-3.2	21.5	9 5/8" SURFACE CASING	
1564.5	1565.9	7.02	201.14	-27.4	-10.6	-4.3	29.4	END OF TANGENT	
2327.3	2357.8	22.86	201.14	-217.2	-84.0	-34.2	232.9	EOB TO 22.86° INC	
5106.3	5373.6	22.86	201.14	-1309.8	-506.4	-206.3	1404.3	END OF TANGENT	
6219.0	6516.4	0.00	0.00	-1519.6	-587.5	-239.4	1629.2	EOD TO VERTICAL	
6249.0	6546.4	0.00	0.00	-1519.6	-587.5	-239.4	1629.2	KOP (10°/100ft BUR)	
6822.0	7446.5	90.00	90.53	-1524.9	-14.5	320.8	2202.2	LANDING PNT - FAIRVIEW 4 (P3)	
6822.0	14528.6	90.00	90.54	-1591.3	7067.2	7244.2	9284.3	BHL - FAIRVIEW 4 (P3)	

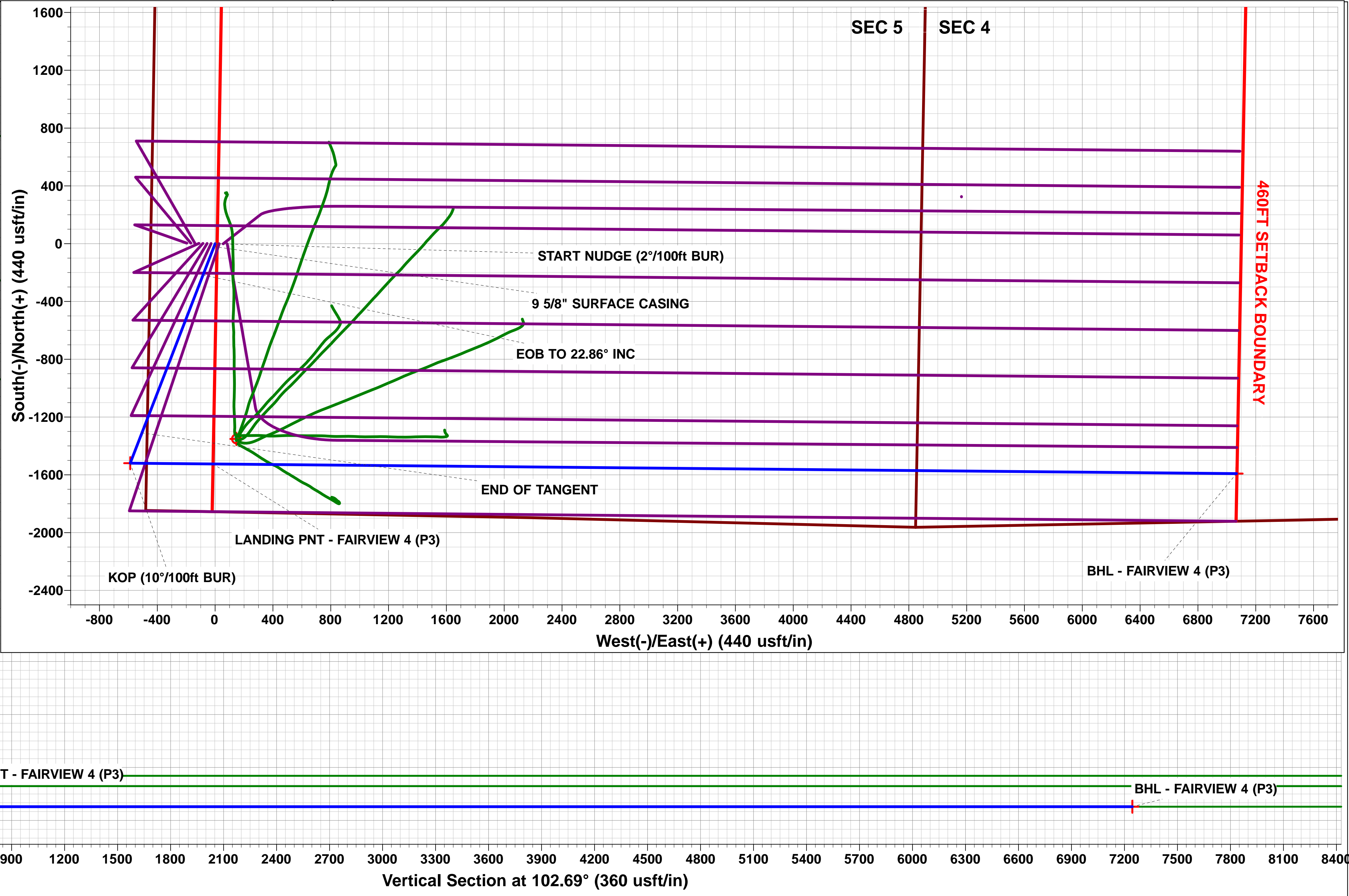
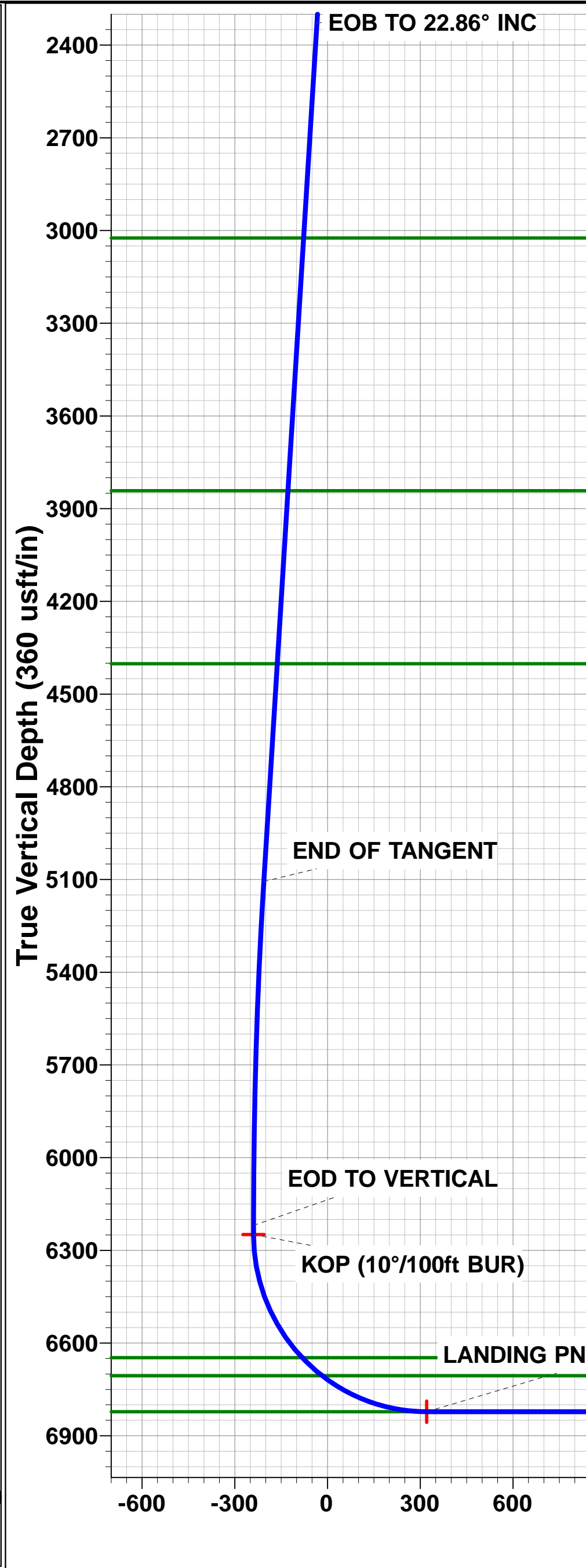
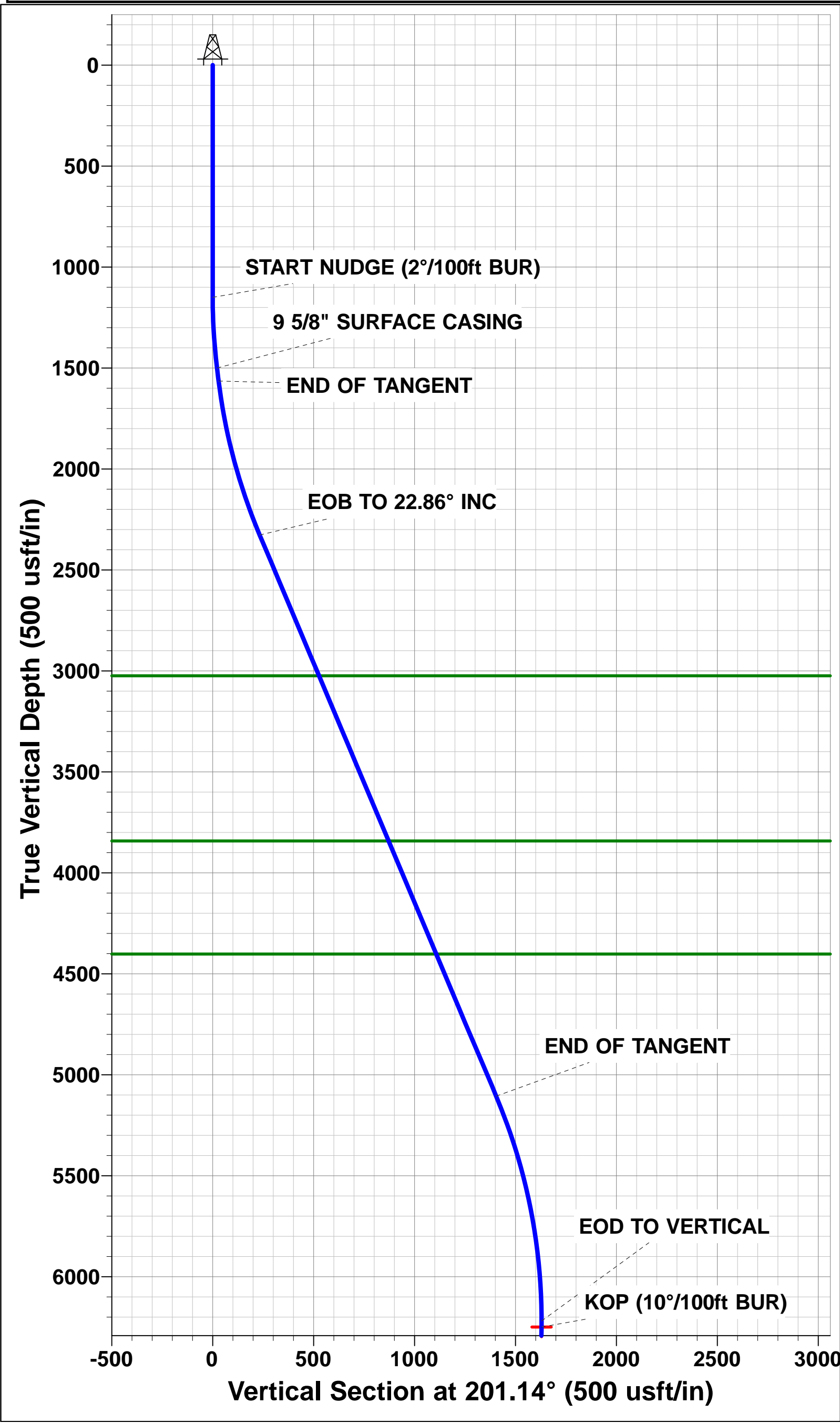
WELLBORE TARGET DETAILS (LAT/LONG)					
Name	TVD	+N/-S	+E/-W	Latitude	Longitude
KOP - FAIRVIEW 4 (P3)	6249.0	-1519.6	-587.5	40.161589	-105.037069
LANDING PNT - FAIRVIEW 4 (P3)	6822.0	-1524.9	-14.5	40.161574	-105.035019
BHL - FAIRVIEW 4 (P3)	6822.0	-1591.3	7067.2	40.161389	-105.009682



FORMATION TOP DETAILS		
TVDPath	MDPath	Formation
3024.0	3113.9	PARKMAN
3842.0	4001.6	SUSSEX
4402.0	4609.3	SHANNON
6647.0	6986.4	SHARON SPRINGS
6706.0	7075.4	NIOBRARA
6822.0	7446.5	NIO B TARGET

Azimuths to True North  
Magnetic North: 8.53°

Magnetic Field  
Strength: 52451.3snT  
Dip Angle: 66.67°  
Date: 10/08/2015  
Model: IGRF2015



# Planning Report



<b>Database:</b>	EDM 5000.1 Single User Db	<b>Local Co-ordinate Reference:</b>	Well FAIRVIEW 4
<b>Company:</b>	EXTRACTION OIL & GAS	<b>TVD Reference:</b>	KB-EST @ 4960.0usft
<b>Project:</b>	WELD COUNTY, COLORADO (NAD 83)	<b>MD Reference:</b>	KB-EST @ 4960.0usft
<b>Site:</b>	NW SW SEC. 5 T2N R68W 6th P.M.	<b>North Reference:</b>	True
<b>Well:</b>	FAIRVIEW 4	<b>Survey Calculation Method:</b>	Minimum Curvature
<b>Wellbore:</b>	ORIGINAL WELLBORE		
<b>Design:</b>	PROPOSAL #3		

<b>Project</b>	WELD COUNTY, COLORADO (NAD 83)		
<b>Map System:</b>	US State Plane 1983	<b>System Datum:</b>	Mean Sea Level
<b>Geo Datum:</b>	North American Datum 1983		
<b>Map Zone:</b>	Colorado Northern Zone		Using geodetic scale factor

<b>Site</b>	NW SW SEC. 5 T2N R68W 6th P.M.		
<b>Site Position:</b>		<b>Northing:</b>	1,303,569.20 usft
<b>From:</b>	Lat/Long	<b>Easting:</b>	3,130,047.26 usft
<b>Position Uncertainty:</b>	0.0 usft	<b>Slot Radius:</b>	1.10000ft
		<b>Latitude:</b>	40.165756
		<b>Longitude:</b>	-105.034667
		<b>Grid Convergence:</b>	0.30 °

<b>Well</b>	FAIRVIEW 4		
<b>Well Position</b>	<b>+N-S</b>	1.4 usft	<b>Northing:</b>
	<b>+E-W</b>	-83.8 usft	<b>Easting:</b>
<b>Position Uncertainty</b>		0.0 usft	<b>Wellhead Elevation:</b>
			<b>Latitude:</b>
			<b>Longitude:</b>
			<b>Ground Level:</b>

<b>Wellbore</b>	ORIGINAL WELLBORE				
<b>Magnetics</b>	<b>Model Name</b>	<b>Sample Date</b>	<b>Declination (°)</b>	<b>Dip Angle (°)</b>	<b>Field Strength (nT)</b>
	IGRF2015	10/08/2015	8.53	66.67	52,451

<b>Design</b>	PROPOSAL #3			
<b>Audit Notes:</b>				
<b>Version:</b>	<b>Phase:</b>	PROTOTYPE	<b>Tie On Depth:</b>	0.0
<b>Vertical Section:</b>	<b>Depth From (TVD) (usft)</b>	<b>+N-S (usft)</b>	<b>+E-W (usft)</b>	<b>Direction (°)</b>
	6,822.0	0.0	0.0	102.69

<b>Plan Sections</b>											
MD (usft)	Inc (°)	Azi (°)	Vertical Depth	SS (usft)	+N-S (usft)	+E-W (usft)	Dogleg Rate (°/100usf)	Build Rate (°/100usf)	Turn Rate (°/100usf)	TFO (°)	Target
0.0	0.00	0.00	0.0	-4,960.0	0.0	0.0	0.00	0.00	0.00	0.00	
1,150.0	0.00	0.00	1,150.0	-3,810.0	0.0	0.0	0.00	0.00	0.00	0.00	
1,500.9	7.02	201.14	1,500.0	-3,460.0	-20.0	-7.7	2.00	2.00	0.00	201.14	
1,565.9	7.02	201.14	1,564.5	-3,395.5	-27.4	-10.6	0.00	0.00	0.00	0.00	
2,357.8	22.86	201.14	2,327.3	-2,632.7	-217.2	-84.0	2.00	2.00	0.00	0.00	
5,373.6	22.86	201.14	5,106.3	146.3	-1,309.8	-506.4	0.00	0.00	0.00	0.00	
6,516.4	0.00	0.00	6,219.0	1,259.0	-1,519.6	-587.5	2.00	-2.00	0.00	180.00	
6,546.4	0.00	0.00	6,249.0	1,289.0	-1,519.6	-587.5	0.00	0.00	0.00	0.00	KOP - FAIRVIEW 4
7,446.5	90.00	90.53	6,822.0	1,862.0	-1,524.9	-14.5	10.00	10.00	10.06	90.53	LANDING PNT - FAIRVIEW 4
14,528.6	90.00	90.54	6,822.0	1,862.0	-1,591.3	7,067.2	0.00	0.00	0.00	94.95	BHL - FAIRVIEW 4

## Planning Report



<b>Database:</b>	EDM 5000.1 Single User Db	<b>Local Co-ordinate Reference:</b>	Well FAIRVIEW 4
<b>Company:</b>	EXTRACTION OIL & GAS	<b>TVD Reference:</b>	KB-EST @ 4960.0usft
<b>Project:</b>	WELD COUNTY, COLORADO (NAD 83)	<b>MD Reference:</b>	KB-EST @ 4960.0usft
<b>Site:</b>	NW SW SEC. 5 T2N R68W 6th P.M.	<b>North Reference:</b>	True
<b>Well:</b>	FAIRVIEW 4	<b>Survey Calculation Method:</b>	Minimum Curvature
<b>Wellbore:</b>	ORIGINAL WELLBORE		
<b>Design:</b>	PROPOSAL #3		

## Planned Survey

MD (usft)	Inc (°)	Azi (°)	TVD (usft)	SS (usft)	+N/-S (usft)	+E/-W (usft)	Vertical Section (usft)	Dogleg Rate (°/100usft)	Build Rate (°/100usft)	Turn Rate (°/100usft)
0.0	0.00	0.00	0.0	4,960.00	0.0	0.0	0.0	0.00	0.00	0.00
100.0	0.00	0.00	100.0	4,860.00	0.0	0.0	0.0	0.00	0.00	0.00
200.0	0.00	0.00	200.0	4,760.00	0.0	0.0	0.0	0.00	0.00	0.00
300.0	0.00	0.00	300.0	4,660.00	0.0	0.0	0.0	0.00	0.00	0.00
400.0	0.00	0.00	400.0	4,560.00	0.0	0.0	0.0	0.00	0.00	0.00
500.0	0.00	0.00	500.0	4,460.00	0.0	0.0	0.0	0.00	0.00	0.00
600.0	0.00	0.00	600.0	4,360.00	0.0	0.0	0.0	0.00	0.00	0.00
700.0	0.00	0.00	700.0	4,260.00	0.0	0.0	0.0	0.00	0.00	0.00
800.0	0.00	0.00	800.0	4,160.00	0.0	0.0	0.0	0.00	0.00	0.00
900.0	0.00	0.00	900.0	4,060.00	0.0	0.0	0.0	0.00	0.00	0.00
1,000.0	0.00	0.00	1,000.0	3,960.00	0.0	0.0	0.0	0.00	0.00	0.00
1,100.0	0.00	0.00	1,100.0	3,860.00	0.0	0.0	0.0	0.00	0.00	0.00
<b>START NUDGE (2°/100ft BUR)</b>										
1,150.0	0.00	0.00	1,150.0	3,810.00	0.0	0.0	0.0	0.00	0.00	0.00
1,200.0	1.00	201.14	1,200.0	3,760.00	-0.4	-0.2	-0.1	2.00	2.00	0.00
1,300.0	3.00	201.14	1,299.9	3,660.07	-3.7	-1.4	-0.6	2.00	2.00	0.00
1,400.0	5.00	201.14	1,399.7	3,560.32	-10.2	-3.9	-1.6	2.00	2.00	0.00
1,500.0	7.00	201.14	1,499.1	3,460.87	-19.9	-7.7	-3.1	2.00	2.00	0.00
<b>9 5/8" SURFACE CASING</b>										
1,500.9	7.02	201.14	1,500.0	3,460.00	-20.0	-7.7	-3.2	2.00	2.00	0.00
<b>END OF TANGENT</b>										
1,565.9	7.02	201.14	1,564.5	3,395.49	-27.4	-10.6	-4.3	0.00	0.00	0.00
1,600.0	7.70	201.14	1,598.4	3,361.64	-31.5	-12.2	-5.0	2.00	2.00	0.00
1,700.0	9.70	201.14	1,697.2	3,262.80	-45.6	-17.6	-7.2	2.00	2.00	0.00
1,800.0	11.70	201.14	1,795.5	3,164.54	-62.9	-24.3	-9.9	2.00	2.00	0.00
1,900.0	13.70	201.14	1,893.0	3,067.00	-83.4	-32.3	-13.1	2.00	2.00	0.00
2,000.0	15.70	201.14	1,989.7	2,970.27	-107.1	-41.4	-16.9	2.00	2.00	0.00
2,100.0	17.70	201.14	2,085.5	2,874.50	-133.9	-51.8	-21.1	2.00	2.00	0.00
2,200.0	19.70	201.14	2,180.2	2,779.78	-163.8	-63.3	-25.8	2.00	2.00	0.00
2,300.0	21.70	201.14	2,273.8	2,686.24	-196.8	-76.1	-31.0	2.00	2.00	0.00
<b>EOB TO 22.86° INC</b>										
2,357.8	22.86	201.14	2,327.3	2,632.74	-217.2	-84.0	-34.2	2.00	2.00	0.00
2,400.0	22.86	201.14	2,366.1	2,593.87	-232.5	-89.9	-36.6	0.00	0.00	0.00
2,500.0	22.86	201.14	2,458.3	2,501.72	-268.7	-103.9	-42.3	0.00	0.00	0.00
2,600.0	22.86	201.14	2,550.4	2,409.57	-305.0	-117.9	-48.0	0.00	0.00	0.00
2,700.0	22.86	201.14	2,642.6	2,317.42	-341.2	-131.9	-53.7	0.00	0.00	0.00
2,800.0	22.86	201.14	2,734.7	2,225.28	-377.4	-145.9	-59.4	0.00	0.00	0.00
2,900.0	22.86	201.14	2,826.9	2,133.13	-413.6	-159.9	-65.2	0.00	0.00	0.00
3,000.0	22.86	201.14	2,919.0	2,040.98	-449.9	-173.9	-70.9	0.00	0.00	0.00
3,100.0	22.86	201.14	3,011.2	1,948.83	-486.1	-187.9	-76.6	0.00	0.00	0.00
<b>PARKMAN</b>										
3,113.9	22.86	201.14	3,024.0	1,936.00	-491.1	-189.9	-77.4	0.00	0.00	0.00
3,200.0	22.86	201.14	3,103.3	1,856.68	-522.3	-201.9	-82.3	0.00	0.00	0.00
3,300.0	22.86	201.14	3,195.5	1,764.54	-558.6	-215.9	-88.0	0.00	0.00	0.00
3,400.0	22.86	201.14	3,287.6	1,672.39	-594.8	-230.0	-93.7	0.00	0.00	0.00
3,500.0	22.86	201.14	3,379.8	1,580.24	-631.0	-244.0	-99.4	0.00	0.00	0.00
3,600.0	22.86	201.14	3,471.9	1,488.09	-667.2	-258.0	-105.1	0.00	0.00	0.00
3,700.0	22.86	201.14	3,564.1	1,395.94	-703.5	-272.0	-110.8	0.00	0.00	0.00
3,800.0	22.86	201.14	3,656.2	1,303.79	-739.7	-286.0	-116.5	0.00	0.00	0.00
3,900.0	22.86	201.14	3,748.4	1,211.65	-775.9	-300.0	-122.2	0.00	0.00	0.00
4,000.0	22.86	201.14	3,840.5	1,119.50	-812.2	-314.0	-127.9	0.00	0.00	0.00
<b>SUSSEX</b>										
4,001.6	22.86	201.14	3,842.0	1,118.00	-812.7	-314.2	-128.0	0.00	0.00	0.00

<b>Database:</b>	EDM 5000.1 Single User Db	<b>Local Co-ordinate Reference:</b>	Well FAIRVIEW 4
<b>Company:</b>	EXTRACTION OIL & GAS	<b>TVD Reference:</b>	KB-EST @ 4960.0usft
<b>Project:</b>	WELD COUNTY, COLORADO (NAD 83)	<b>MD Reference:</b>	KB-EST @ 4960.0usft
<b>Site:</b>	NW SW SEC. 5 T2N R68W 6th P.M.	<b>North Reference:</b>	True
<b>Well:</b>	FAIRVIEW 4	<b>Survey Calculation Method:</b>	Minimum Curvature
<b>Wellbore:</b>	ORIGINAL WELLBORE		
<b>Design:</b>	PROPOSAL #3		

## Planned Survey

MD (usft)	Inc (°)	Azi (°)	TVD (usft)	SS (usft)	+N/-S (usft)	+E/-W (usft)	Vertical Section (usft)	Dogleg Rate (°/100usft)	Build Rate (°/100usft)	Turn Rate (°/100usft)
4,100.0	22.86	201.14	3,932.6	1,027.35	-848.4	-328.0	-133.6	0.00	0.00	0.00
4,200.0	22.86	201.14	4,024.8	935.20	-884.6	-342.0	-139.3	0.00	0.00	0.00
4,300.0	22.86	201.14	4,116.9	843.05	-920.8	-356.0	-145.0	0.00	0.00	0.00
4,400.0	22.86	201.14	4,209.1	750.91	-957.1	-370.0	-150.7	0.00	0.00	0.00
4,500.0	22.86	201.14	4,301.2	658.76	-993.3	-384.0	-156.5	0.00	0.00	0.00
4,600.0	22.86	201.14	4,393.4	566.61	-1,029.5	-398.0	-162.2	0.00	0.00	0.00
<b>SHANNON</b>										
4,609.3	22.86	201.14	4,402.0	558.00	-1,032.9	-399.3	-162.7	0.00	0.00	0.00
4,700.0	22.86	201.14	4,485.5	474.46	-1,065.8	-412.0	-167.9	0.00	0.00	0.00
4,800.0	22.86	201.14	4,577.7	382.31	-1,102.0	-426.1	-173.6	0.00	0.00	0.00
4,900.0	22.86	201.14	4,669.8	290.16	-1,138.2	-440.1	-179.3	0.00	0.00	0.00
5,000.0	22.86	201.14	4,762.0	198.02	-1,174.4	-454.1	-185.0	0.00	0.00	0.00
5,100.0	22.86	201.14	4,854.1	105.87	-1,210.7	-468.1	-190.7	0.00	0.00	0.00
5,200.0	22.86	201.14	4,946.3	13.72	-1,246.9	-482.1	-196.4	0.00	0.00	0.00
5,300.0	22.86	201.14	5,038.4	-78.43	-1,283.1	-496.1	-202.1	0.00	0.00	0.00
<b>END OF TANGENT</b>										
5,373.6	22.86	201.14	5,106.3	-146.25	-1,309.8	-506.4	-206.3	0.00	0.00	0.00
5,400.0	22.33	201.14	5,130.6	-170.62	-1,319.2	-510.1	-207.8	2.00	-2.00	0.00
5,500.0	20.33	201.14	5,223.8	-263.77	-1,353.2	-523.2	-213.1	2.00	-2.00	0.00
5,600.0	18.33	201.14	5,318.1	-358.13	-1,384.0	-535.1	-218.0	2.00	-2.00	0.00
5,700.0	16.33	201.14	5,413.6	-453.58	-1,411.8	-545.8	-222.4	2.00	-2.00	0.00
5,800.0	14.33	201.14	5,510.0	-550.02	-1,436.5	-555.4	-226.3	2.00	-2.00	0.00
5,900.0	12.33	201.14	5,607.3	-647.32	-1,458.0	-563.7	-229.6	2.00	-2.00	0.00
6,000.0	10.33	201.14	5,705.4	-745.37	-1,476.3	-570.8	-232.5	2.00	-2.00	0.00
6,100.0	8.33	201.14	5,804.0	-844.04	-1,491.4	-576.6	-234.9	2.00	-2.00	0.00
6,200.0	6.33	201.14	5,903.2	-943.22	-1,503.3	-581.2	-236.8	2.00	-2.00	0.00
6,300.0	4.33	201.14	6,002.8	-1,042.78	-1,512.0	-584.6	-238.2	2.00	-2.00	0.00
6,400.0	2.33	201.14	6,102.6	-1,142.61	-1,517.4	-586.7	-239.0	2.00	-2.00	0.00
6,500.0	0.33	201.14	6,202.6	-1,242.58	-1,519.6	-587.5	-239.3	2.00	-2.00	0.00
<b>EOD TO VERTICAL</b>										
6,516.4	0.00	0.00	6,219.0	-1,259.00	-1,519.6	-587.5	-239.4	2.00	-2.00	0.00
<b>KOP (10°/100ft BUR)</b>										
6,546.4	0.00	0.00	6,249.0	-1,289.00	-1,519.6	-587.5	-239.4	0.00	0.00	0.00
6,600.0	5.36	90.53	6,302.5	-1,342.50	-1,519.6	-585.0	-236.9	10.00	10.00	0.00
6,700.0	15.36	90.53	6,400.7	-1,440.75	-1,519.8	-567.1	-219.4	10.00	10.00	0.00
6,800.0	25.36	90.53	6,494.4	-1,534.38	-1,520.1	-532.3	-185.4	10.00	10.00	0.00
6,900.0	35.36	90.53	6,580.6	-1,620.56	-1,520.6	-481.8	-136.1	10.00	10.00	0.00
<b>SHARON SPRINGS</b>										
6,986.4	43.99	90.53	6,647.0	-1,687.00	-1,521.1	-426.7	-82.2	10.00	10.00	0.00
7,000.0	45.35	90.53	6,656.7	-1,696.67	-1,521.2	-417.2	-72.8	10.00	10.00	0.00
<b>NIOBRARA</b>										
7,075.4	52.90	90.53	6,706.0	-1,746.00	-1,521.7	-360.2	-17.1	10.00	10.00	0.00
7,100.0	55.35	90.53	6,720.4	-1,760.39	-1,521.9	-340.3	2.3	10.00	10.00	0.00
7,200.0	65.35	90.53	6,769.8	-1,809.80	-1,522.7	-253.5	87.2	10.00	10.00	0.00
7,300.0	75.35	90.53	6,803.4	-1,843.38	-1,523.6	-159.4	179.2	10.00	10.00	0.00
7,400.0	85.35	90.53	6,820.1	-1,860.12	-1,524.5	-61.0	275.4	10.00	10.00	0.00
<b>LANDING PNT - FAIRVIEW 4 (P3) - NIO B TARGET</b>										
7,446.5	90.00	90.53	6,822.0	-1,862.00	-1,524.9	-14.5	320.8	10.00	10.00	0.00
7,500.0	90.00	90.53	6,822.0	-1,862.00	-1,525.4	39.0	373.1	0.00	0.00	0.00
7,600.0	90.00	90.53	6,822.0	-1,862.00	-1,526.4	139.0	470.9	0.00	0.00	0.00
7,700.0	90.00	90.53	6,822.0	-1,862.00	-1,527.3	239.0	568.6	0.00	0.00	0.00
7,800.0	90.00	90.53	6,822.0	-1,862.00	-1,528.2	339.0	666.4	0.00	0.00	0.00
7,900.0	90.00	90.53	6,822.0	-1,862.00	-1,529.2	439.0	764.1	0.00	0.00	0.00



# Planning Report



<b>Database:</b>	EDM 5000.1 Single User Db	<b>Local Co-ordinate Reference:</b>	Well FAIRVIEW 4
<b>Company:</b>	EXTRACTION OIL & GAS	<b>TVD Reference:</b>	KB-EST @ 4960.0usft
<b>Project:</b>	WELD COUNTY, COLORADO (NAD 83)	<b>MD Reference:</b>	KB-EST @ 4960.0usft
<b>Site:</b>	NW SW SEC. 5 T2N R68W 6th P.M.	<b>North Reference:</b>	True
<b>Well:</b>	FAIRVIEW 4	<b>Survey Calculation Method:</b>	Minimum Curvature
<b>Wellbore:</b>	ORIGINAL WELLBORE		
<b>Design:</b>	PROPOSAL #3		

Planned Survey										
MD (usft)	Inc (°)	Azi (°)	TVD (usft)	SS (usft)	+N/-S (usft)	+E/-W (usft)	Vertical Section (usft)	Dogleg Rate (°/100usft)	Build Rate (°/100usft)	Turn Rate (°/100usft)
8,000.0	90.00	90.53	6,822.0	-1,862.00	-1,530.1	539.0	861.9	0.00	0.00	0.00
8,100.0	90.00	90.53	6,822.0	-1,862.00	-1,531.0	638.9	959.7	0.00	0.00	0.00
8,200.0	90.00	90.53	6,822.0	-1,862.00	-1,532.0	738.9	1,057.4	0.00	0.00	0.00
8,300.0	90.00	90.53	6,822.0	-1,862.00	-1,532.9	838.9	1,155.2	0.00	0.00	0.00
8,400.0	90.00	90.53	6,822.0	-1,862.00	-1,533.8	938.9	1,252.9	0.00	0.00	0.00
8,500.0	90.00	90.53	6,822.0	-1,862.00	-1,534.8	1,038.9	1,350.7	0.00	0.00	0.00
8,600.0	90.00	90.53	6,822.0	-1,861.99	-1,535.7	1,138.9	1,448.4	0.00	0.00	0.00
8,700.0	90.00	90.53	6,822.0	-1,861.99	-1,536.6	1,238.9	1,546.2	0.00	0.00	0.00
8,800.0	90.00	90.53	6,822.0	-1,861.99	-1,537.6	1,338.9	1,644.0	0.00	0.00	0.00
8,900.0	90.00	90.54	6,822.0	-1,861.99	-1,538.5	1,438.9	1,741.7	0.00	0.00	0.00
9,000.0	90.00	90.54	6,822.0	-1,861.99	-1,539.4	1,538.9	1,839.5	0.00	0.00	0.00
9,100.0	90.00	90.54	6,822.0	-1,861.99	-1,540.4	1,638.9	1,937.2	0.00	0.00	0.00
9,200.0	90.00	90.54	6,822.0	-1,861.99	-1,541.3	1,738.9	2,035.0	0.00	0.00	0.00
9,300.0	90.00	90.54	6,822.0	-1,861.99	-1,542.2	1,838.9	2,132.8	0.00	0.00	0.00
9,400.0	90.00	90.54	6,822.0	-1,861.99	-1,543.2	1,938.9	2,230.5	0.00	0.00	0.00
9,500.0	90.00	90.54	6,822.0	-1,861.99	-1,544.1	2,038.9	2,328.3	0.00	0.00	0.00
9,600.0	90.00	90.54	6,822.0	-1,861.99	-1,545.0	2,138.9	2,426.0	0.00	0.00	0.00
9,700.0	90.00	90.54	6,822.0	-1,861.99	-1,546.0	2,238.9	2,523.8	0.00	0.00	0.00
9,800.0	90.00	90.54	6,822.0	-1,861.99	-1,546.9	2,338.9	2,621.6	0.00	0.00	0.00
9,900.0	90.00	90.54	6,822.0	-1,861.99	-1,547.8	2,438.9	2,719.3	0.00	0.00	0.00
10,000.0	90.00	90.54	6,822.0	-1,861.99	-1,548.8	2,538.9	2,817.1	0.00	0.00	0.00
10,100.0	90.00	90.54	6,822.0	-1,861.99	-1,549.7	2,638.9	2,914.8	0.00	0.00	0.00
10,200.0	90.00	90.54	6,822.0	-1,861.99	-1,550.6	2,738.9	3,012.6	0.00	0.00	0.00
10,300.0	90.00	90.54	6,822.0	-1,861.99	-1,551.6	2,838.9	3,110.3	0.00	0.00	0.00
10,400.0	90.00	90.54	6,822.0	-1,861.99	-1,552.5	2,938.8	3,208.1	0.00	0.00	0.00
10,500.0	90.00	90.54	6,822.0	-1,861.99	-1,553.5	3,038.8	3,305.9	0.00	0.00	0.00
10,600.0	90.00	90.54	6,822.0	-1,861.99	-1,554.4	3,138.8	3,403.6	0.00	0.00	0.00
10,700.0	90.00	90.54	6,822.0	-1,861.99	-1,555.3	3,238.8	3,501.4	0.00	0.00	0.00
10,800.0	90.00	90.54	6,822.0	-1,861.99	-1,556.3	3,338.8	3,599.1	0.00	0.00	0.00
10,900.0	90.00	90.54	6,822.0	-1,861.99	-1,557.2	3,438.8	3,696.9	0.00	0.00	0.00
11,000.0	90.00	90.54	6,822.0	-1,861.99	-1,558.1	3,538.8	3,794.7	0.00	0.00	0.00
11,100.0	90.00	90.54	6,822.0	-1,861.99	-1,559.1	3,638.8	3,892.4	0.00	0.00	0.00
11,200.0	90.00	90.54	6,822.0	-1,861.99	-1,560.0	3,738.8	3,990.2	0.00	0.00	0.00
11,300.0	90.00	90.54	6,822.0	-1,861.99	-1,560.9	3,838.8	4,087.9	0.00	0.00	0.00
11,400.0	90.00	90.54	6,822.0	-1,861.99	-1,561.9	3,938.8	4,185.7	0.00	0.00	0.00
11,500.0	90.00	90.54	6,822.0	-1,861.99	-1,562.8	4,038.8	4,283.5	0.00	0.00	0.00
11,600.0	90.00	90.54	6,822.0	-1,861.99	-1,563.8	4,138.8	4,381.2	0.00	0.00	0.00
11,700.0	90.00	90.54	6,822.0	-1,861.99	-1,564.7	4,238.8	4,479.0	0.00	0.00	0.00
11,800.0	90.00	90.54	6,822.0	-1,861.99	-1,565.6	4,338.8	4,576.7	0.00	0.00	0.00
11,900.0	90.00	90.54	6,822.0	-1,861.99	-1,566.6	4,438.8	4,674.5	0.00	0.00	0.00
12,000.0	90.00	90.54	6,822.0	-1,861.99	-1,567.5	4,538.8	4,772.2	0.00	0.00	0.00
12,100.0	90.00	90.54	6,822.0	-1,861.99	-1,568.5	4,638.8	4,870.0	0.00	0.00	0.00
12,200.0	90.00	90.54	6,822.0	-1,861.99	-1,569.4	4,738.8	4,967.8	0.00	0.00	0.00
12,300.0	90.00	90.54	6,822.0	-1,861.99	-1,570.3	4,838.8	5,065.5	0.00	0.00	0.00
12,400.0	90.00	90.54	6,822.0	-1,861.99	-1,571.3	4,938.8	5,163.3	0.00	0.00	0.00
12,500.0	90.00	90.54	6,822.0	-1,861.99	-1,572.2	5,038.8	5,261.0	0.00	0.00	0.00
12,600.0	90.00	90.54	6,822.0	-1,861.99	-1,573.2	5,138.7	5,358.8	0.00	0.00	0.00
12,700.0	90.00	90.54	6,822.0	-1,861.99	-1,574.1	5,238.7	5,456.6	0.00	0.00	0.00
12,800.0	90.00	90.54	6,822.0	-1,861.99	-1,575.0	5,338.7	5,554.3	0.00	0.00	0.00
12,900.0	90.00	90.54	6,822.0	-1,861.99	-1,576.0	5,438.7	5,652.1	0.00	0.00	0.00
13,000.0	90.00	90.54	6,822.0	-1,861.99	-1,576.9	5,538.7	5,749.8	0.00	0.00	0.00
13,100.0	90.00	90.54	6,822.0	-1,861.99	-1,577.9	5,638.7	5,847.6	0.00	0.00	0.00
13,200.0	90.00	90.54	6,822.0	-1,861.99	-1,578.8	5,738.7	5,945.4	0.00	0.00	0.00
13,300.0	90.00	90.54	6,822.0	-1,861.99	-1,579.7	5,838.7	6,043.1	0.00	0.00	0.00

# Planning Report



<b>Database:</b>	EDM 5000.1 Single User Db	<b>Local Co-ordinate Reference:</b>	Well FAIRVIEW 4
<b>Company:</b>	EXTRACTION OIL & GAS	<b>TVD Reference:</b>	KB-EST @ 4960.0usft
<b>Project:</b>	WELD COUNTY, COLORADO (NAD 83)	<b>MD Reference:</b>	KB-EST @ 4960.0usft
<b>Site:</b>	NW SW SEC. 5 T2N R68W 6th P.M.	<b>North Reference:</b>	True
<b>Well:</b>	FAIRVIEW 4	<b>Survey Calculation Method:</b>	Minimum Curvature
<b>Wellbore:</b>	ORIGINAL WELLBORE		
<b>Design:</b>	PROPOSAL #3		

Planned Survey										
MD (usft)	Inc (°)	Azi (°)	TVD (usft)	SS (usft)	+N/-S (usft)	+E/-W (usft)	Vertical Section (usft)	Dogleg Rate (°/100usft)	Build Rate (°/100usft)	Turn Rate (°/100usft)
13,400.0	90.00	90.54	6,822.0	-1,862.00	-1,580.7	5,938.7	6,140.9	0.00	0.00	0.00
13,500.0	90.00	90.54	6,822.0	-1,862.00	-1,581.6	6,038.7	6,238.6	0.00	0.00	0.00
13,600.0	90.00	90.54	6,822.0	-1,862.00	-1,582.6	6,138.7	6,336.4	0.00	0.00	0.00
13,700.0	90.00	90.54	6,822.0	-1,862.00	-1,583.5	6,238.7	6,434.2	0.00	0.00	0.00
13,800.0	90.00	90.54	6,822.0	-1,862.00	-1,584.5	6,338.7	6,531.9	0.00	0.00	0.00
13,900.0	90.00	90.54	6,822.0	-1,862.00	-1,585.4	6,438.7	6,629.7	0.00	0.00	0.00
14,000.0	90.00	90.54	6,822.0	-1,862.00	-1,586.3	6,538.7	6,727.4	0.00	0.00	0.00
14,100.0	90.00	90.54	6,822.0	-1,862.00	-1,587.3	6,638.7	6,825.2	0.00	0.00	0.00
14,200.0	90.00	90.54	6,822.0	-1,862.00	-1,588.2	6,738.7	6,923.0	0.00	0.00	0.00
14,300.0	90.00	90.54	6,822.0	-1,862.00	-1,589.2	6,838.7	7,020.7	0.00	0.00	0.00
14,400.0	90.00	90.54	6,822.0	-1,862.00	-1,590.1	6,938.7	7,118.5	0.00	0.00	0.00
14,500.0	90.00	90.54	6,822.0	-1,862.00	-1,591.1	7,038.7	7,216.2	0.00	0.00	0.00
<b>BHL - FAIRVIEW 4 (P3)</b>										
<b>14,528.6</b>	<b>90.00</b>	<b>90.54</b>	<b>6,822.0</b>	<b>-1,862.00</b>	<b>-1,591.3</b>	<b>7,067.2</b>	<b>7,244.2</b>	<b>0.00</b>	<b>0.00</b>	<b>0.00</b>

Formations						
MD (usft)	TVD (usft)	Name	Lithology	Dip (°)	Dip Direction (°)	
3,113.9	3,024.0	PARKMAN		0.00		
4,001.6	3,842.0	SUSSEX		0.00		
4,609.3	4,402.0	SHANNON		0.00		
6,986.4	6,647.0	SHARON SPRINGS		0.00		
7,075.4	6,706.0	NIOBRARA		0.00		
7,446.5	6,822.0	NIO B TARGET		0.00		

Plan Annotations				
MD (usft)	TVD (usft)	Local Coordinates		Comment
		+N/-S (usft)	+E/-W (usft)	
1,150.0	1,150.0	0.0	0.0	START NUDGE (2°/100ft BUR)
1,500.9	1,500.0	-20.0	-7.7	9 5/8" SURFACE CASING
1,565.9	1,564.5	-27.4	-10.6	END OF TANGENT
2,357.8	2,327.3	-217.2	-84.0	EOB TO 22.86° INC
5,373.6	5,106.3	-1,309.8	-506.4	END OF TANGENT
6,516.4	6,219.0	-1,519.6	-587.5	EOD TO VERTICAL
6,546.4	6,249.0	-1,519.6	-587.5	KOP (10°/100ft BUR)
7,446.5	6,822.0	-1,524.9	-14.5	LANDING PNT - FAIRVIEW 4 (P3)
14,528.6	6,822.0	-1,591.3	7,067.2	BHL - FAIRVIEW 4 (P3)