

EXTRACTION OIL & GAS

WELD COUNTY, COLORADO (NAD 83)

NW SW SEC. 5 T2N R68W 6th P.M.

FAIRVIEW 1 - Slot FAIRVIEW 1

ORIGINAL WELLBORE

10 August, 2015

Plan: PROPOSAL #4





Project: WELD COUNTY, COLORADO (NAD 83)
Site: NW SW SEC. 5 T2N R68W 6th P.M.
Well: FAIRVIEW 1
Wellbore: ORIGINAL WELLBORE
Design: PROPOSAL #4

ANNOTATIONS

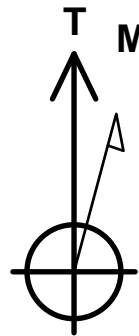
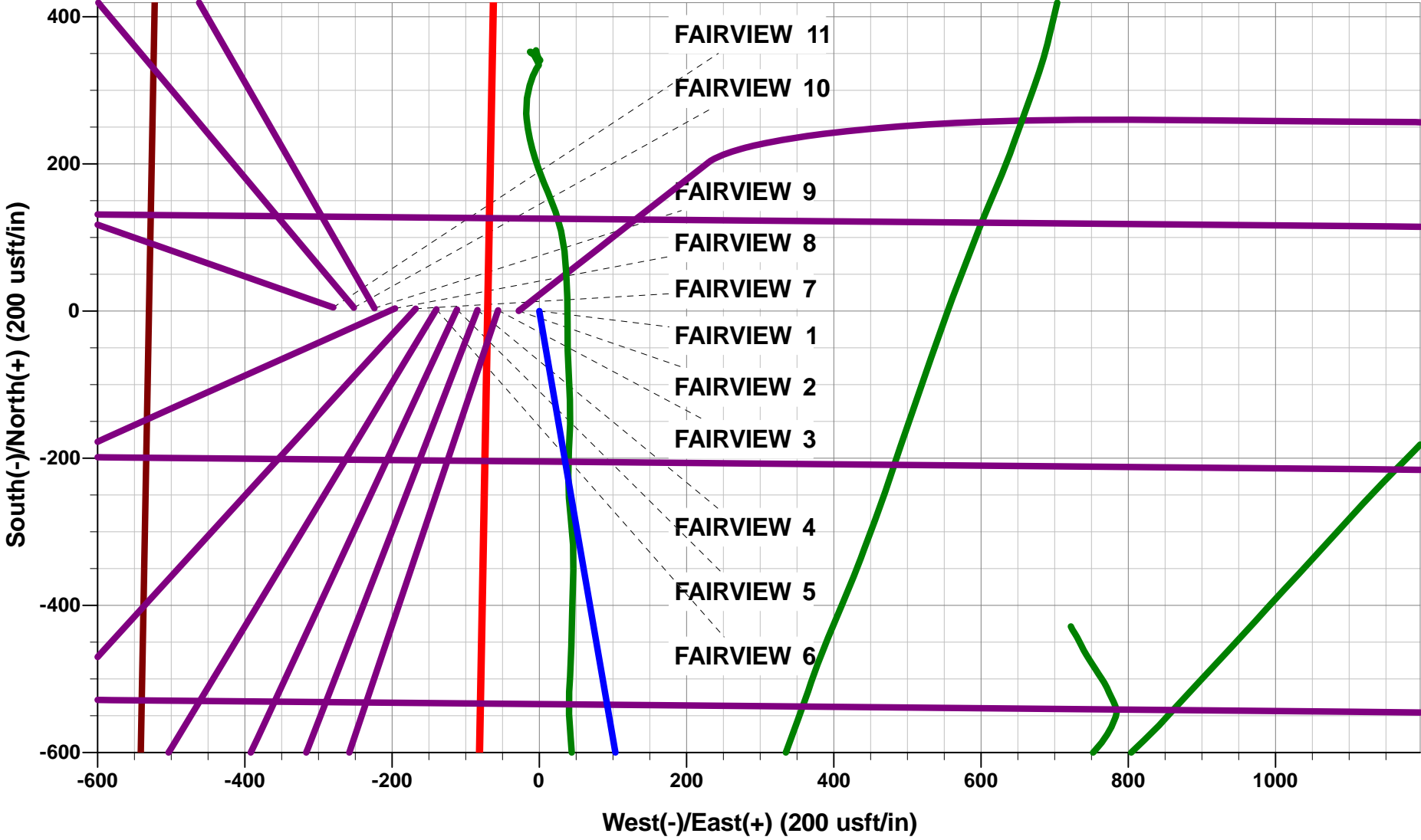
TVD	MD	Inc	Azi	+N/-S	+E/-W	VSect	Dep	Annotation
4258.0	4258.0	0.00	0.00	0.0	0.0	0.0	0.0	START NUDDGE (2°/100ft BUR)
5468.7	5508.0	25.00	170.22	-264.5	45.6	97.0	268.4	EOB TO 25° INC
7360.4	7595.3	25.00	170.22	-1133.9	195.4	415.9	1150.6	START BUILD & TURN
7842.0	8452.2	90.00	90.46	-1359.5	765.0	1018.8	1797.8	LANDING PNT - FAIRVIEW 1 (P4)
7842.0	14672.7	90.00	90.46	-1409.6	6985.3	7126.1	8018.3	BHL - FAIRVIEW 1 (P4)

WELLBORE TARGET DETAILS (LAT/LONG)

Name	TVD	+N/-S	+E/-W	Latitude	Longitude
LANDING PNT - FAIRVIEW 1 (P4)	7842.0	-1359.5	765.0	40.162024	-105.031930
BHL - FAIRVIEW 1 (P4)	7842.0	-1409.6	6985.3	40.161884	-105.009675

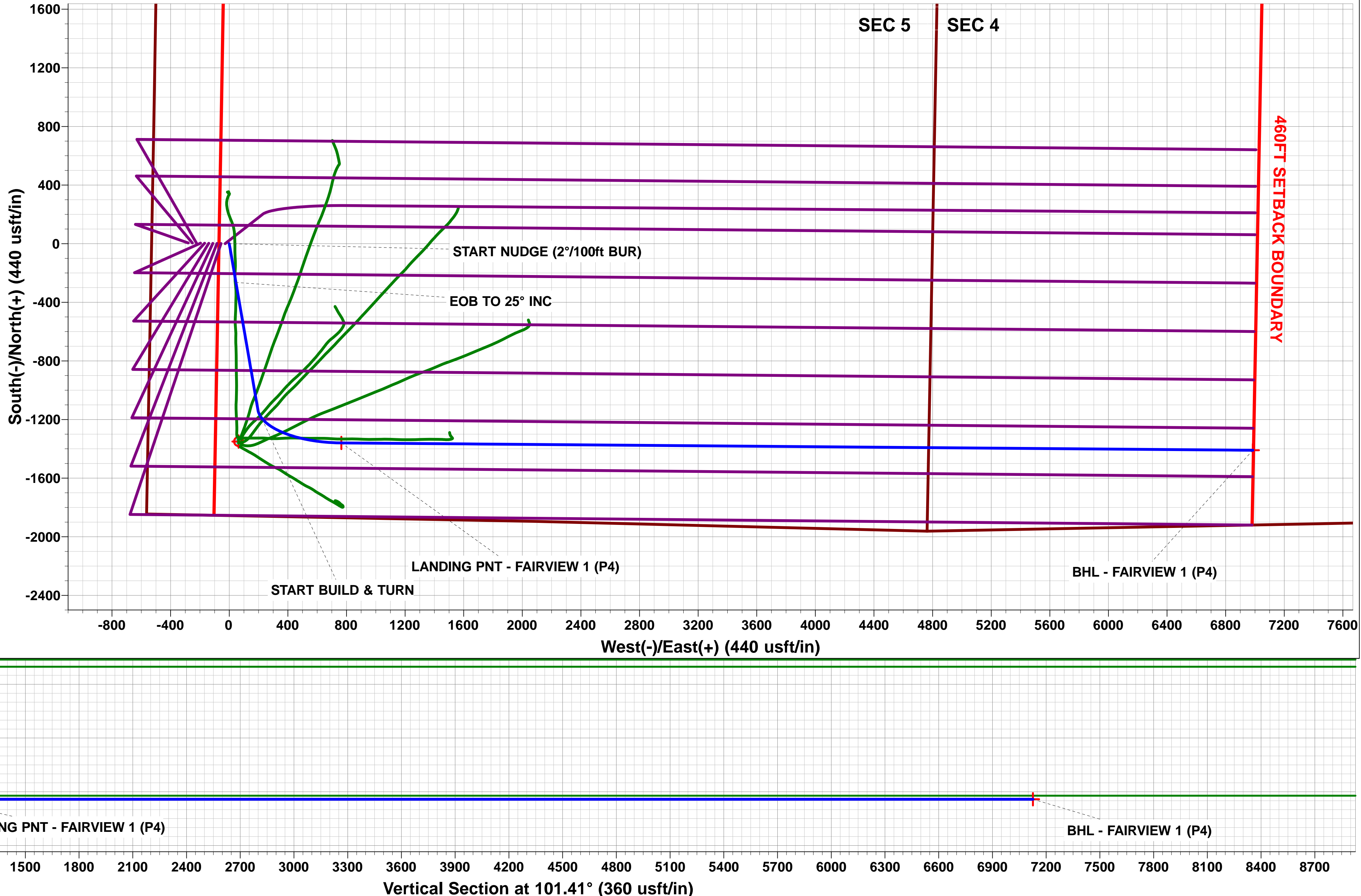
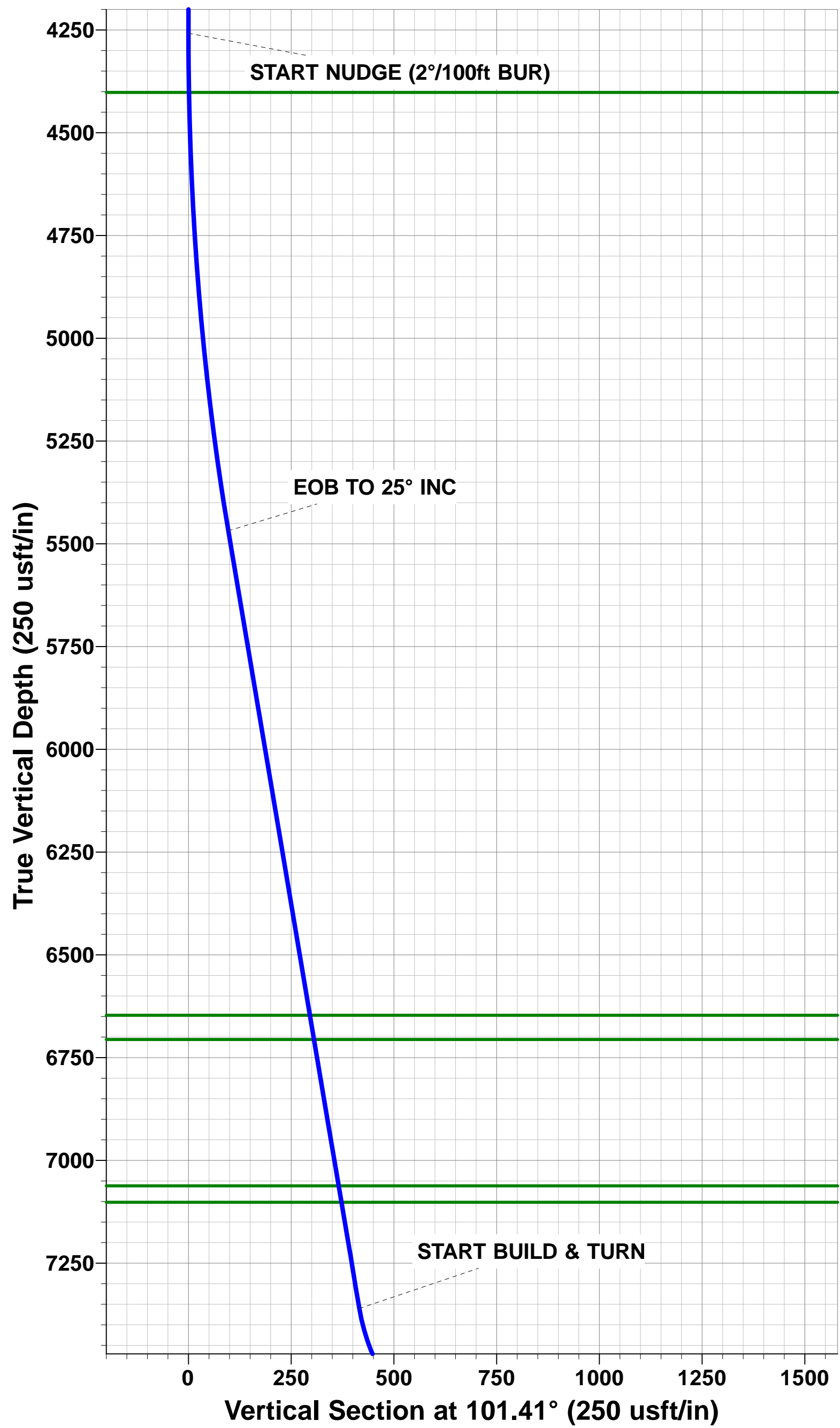
FORMATION TOP DETAILS

TVDPath	MDPath	Formation
3024.0	3024.0	PARKMAN
3842.0	3842.0	SUSSEX
4402.0	4402.1	SHANNON
6647.0	6808.1	SHARON SPRINGS
6706.0	6873.2	NIOBRARA
7062.0	7266.0	FORT HAYS
7102.0	7310.2	CODELL
7822.0	8292.9	J SAND



Azimuths to True North
Magnetic North: 8.53°

Magnetic Field
Strength: 52451.3snT
Dip Angle: 66.67°
Date: 10/08/2015
Model: IGRF2015



Planning Report



Database:	EDM 5000.1 Single User Db	Local Co-ordinate Reference:	Well FAIRVIEW 1 - Slot FAIRVIEW 1
Company:	EXTRACTION OIL & GAS	TVD Reference:	KB-EST @ 4957.0usft
Project:	WELD COUNTY, COLORADO (NAD 83)	MD Reference:	KB-EST @ 4957.0usft
Site:	NW SW SEC. 5 T2N R68W 6th P.M.	North Reference:	True
Well:	FAIRVIEW 1	Survey Calculation Method:	Minimum Curvature
Wellbore:	ORIGINAL WELLBORE		
Design:	PROPOSAL #4		

Project	WELD COUNTY, COLORADO (NAD 83)		
Map System:	US State Plane 1983	System Datum:	Mean Sea Level
Geo Datum:	North American Datum 1983		
Map Zone:	Colorado Northern Zone		Using geodetic scale factor

Site	NW SW SEC. 5 T2N R68W 6th P.M.		
Site Position:		Northing:	1,303,569.20 usft
From:	Lat/Long	Easting:	3,130,047.26 usft
Position Uncertainty:	0.0 usft	Slot Radius:	1.10000 ft
		Latitude:	40.165756
		Longitude:	-105.034667
		Grid Convergence:	0.30 °

Well	FAIRVIEW 1 - Slot FAIRVIEW 1		
Well Position	+N/-S	0.0 usft	Northing: 1,303,569.20 usfi
	+E/-W	0.0 usft	Easting: 3,130,047.26 usfi
Position Uncertainty	0.0 usft	Wellhead Elevation:	usfi
		Latitude:	40.165756
		Longitude:	-105.034667
		Ground Level:	4,941.0 usft

Wellbore	ORIGINAL WELLBORE				
Magnetics	Model Name	Sample Date	Declination (°)	Dip Angle (°)	Field Strength (nT)
	IGRF2015	10/08/2015	8.53	66.67	52,451

Design	PROPOSAL #4			
Audit Notes:				
Version:	Phase:	PROTOTYPE	Tie On Depth:	0.0
Vertical Section:	Depth From (TVD) (usft)	+N/-S (usft)	+E/-W (usft)	Direction (°)
	0.0	0.0	0.0	101.41

Plan Sections											
MD (usft)	Inc (°)	Azi (°)	Vertical Depth	SS (usft)	+N/-S (usft)	+E/-W (usft)	Dogleg Rate (°/100usf)	Build Rate (°/100usf)	Turn Rate (°/100usf)	TFO (°)	Target
0.0	0.00	0.00	0.0	-4,957.0	0.0	0.0	0.00	0.00	0.00	0.00	
4,258.0	0.00	0.00	4,258.0	-699.0	0.0	0.0	0.00	0.00	0.00	0.00	
5,508.0	25.00	170.22	5,468.7	511.7	-264.5	45.6	2.00	2.00	0.00	170.22	
5,508.0	25.00	170.22	5,468.7	511.7	-264.5	45.6	10.00	9.98	1.13	2.74	
7,595.3	25.00	170.22	7,360.4	2,403.4	-1,133.9	195.4	0.00	0.00	0.00	0.00	
8,452.2	90.00	90.46	7,842.0	2,885.0	-1,359.5	765.0	10.00	7.59	-9.31	-80.70	LANDING PNT - FA
14,672.7	90.00	90.46	7,842.0	2,885.0	-1,409.6	6,985.3	0.00	0.00	0.00	0.00	BHL - FAIRVIEW 1

Planning Report



Database:	EDM 5000.1 Single User Db	Local Co-ordinate Reference:	Well FAIRVIEW 1 - Slot FAIRVIEW 1
Company:	EXTRACTION OIL & GAS	TVD Reference:	KB-EST @ 4957.0usft
Project:	WELD COUNTY, COLORADO (NAD 83)	MD Reference:	KB-EST @ 4957.0usft
Site:	NW SW SEC. 5 T2N R68W 6th P.M.	North Reference:	True
Well:	FAIRVIEW 1	Survey Calculation Method:	Minimum Curvature
Wellbore:	ORIGINAL WELLBORE		
Design:	PROPOSAL #4		

Planned Survey										
MD (usft)	Inc (°)	Azi (°)	TVD (usft)	SS (usft)	+N/-S (usft)	+E/-W (usft)	Vertical Section (usft)	Dogleg Rate (°/100usft)	Build Rate (°/100usft)	Turn Rate (°/100usft)
0.0	0.00	0.00	0.0	4,957.00	0.0	0.0	0.0	0.00	0.00	0.00
100.0	0.00	0.00	100.0	4,857.00	0.0	0.0	0.0	0.00	0.00	0.00
200.0	0.00	0.00	200.0	4,757.00	0.0	0.0	0.0	0.00	0.00	0.00
300.0	0.00	0.00	300.0	4,657.00	0.0	0.0	0.0	0.00	0.00	0.00
400.0	0.00	0.00	400.0	4,557.00	0.0	0.0	0.0	0.00	0.00	0.00
500.0	0.00	0.00	500.0	4,457.00	0.0	0.0	0.0	0.00	0.00	0.00
600.0	0.00	0.00	600.0	4,357.00	0.0	0.0	0.0	0.00	0.00	0.00
700.0	0.00	0.00	700.0	4,257.00	0.0	0.0	0.0	0.00	0.00	0.00
800.0	0.00	0.00	800.0	4,157.00	0.0	0.0	0.0	0.00	0.00	0.00
900.0	0.00	0.00	900.0	4,057.00	0.0	0.0	0.0	0.00	0.00	0.00
1,000.0	0.00	0.00	1,000.0	3,957.00	0.0	0.0	0.0	0.00	0.00	0.00
1,100.0	0.00	0.00	1,100.0	3,857.00	0.0	0.0	0.0	0.00	0.00	0.00
1,200.0	0.00	0.00	1,200.0	3,757.00	0.0	0.0	0.0	0.00	0.00	0.00
1,300.0	0.00	0.00	1,300.0	3,657.00	0.0	0.0	0.0	0.00	0.00	0.00
1,400.0	0.00	0.00	1,400.0	3,557.00	0.0	0.0	0.0	0.00	0.00	0.00
1,500.0	0.00	0.00	1,500.0	3,457.00	0.0	0.0	0.0	0.00	0.00	0.00
1,600.0	0.00	0.00	1,600.0	3,357.00	0.0	0.0	0.0	0.00	0.00	0.00
1,700.0	0.00	0.00	1,700.0	3,257.00	0.0	0.0	0.0	0.00	0.00	0.00
1,800.0	0.00	0.00	1,800.0	3,157.00	0.0	0.0	0.0	0.00	0.00	0.00
1,900.0	0.00	0.00	1,900.0	3,057.00	0.0	0.0	0.0	0.00	0.00	0.00
2,000.0	0.00	0.00	2,000.0	2,957.00	0.0	0.0	0.0	0.00	0.00	0.00
2,100.0	0.00	0.00	2,100.0	2,857.00	0.0	0.0	0.0	0.00	0.00	0.00
2,200.0	0.00	0.00	2,200.0	2,757.00	0.0	0.0	0.0	0.00	0.00	0.00
2,300.0	0.00	0.00	2,300.0	2,657.00	0.0	0.0	0.0	0.00	0.00	0.00
2,400.0	0.00	0.00	2,400.0	2,557.00	0.0	0.0	0.0	0.00	0.00	0.00
2,500.0	0.00	0.00	2,500.0	2,457.00	0.0	0.0	0.0	0.00	0.00	0.00
2,600.0	0.00	0.00	2,600.0	2,357.00	0.0	0.0	0.0	0.00	0.00	0.00
2,700.0	0.00	0.00	2,700.0	2,257.00	0.0	0.0	0.0	0.00	0.00	0.00
2,800.0	0.00	0.00	2,800.0	2,157.00	0.0	0.0	0.0	0.00	0.00	0.00
2,900.0	0.00	0.00	2,900.0	2,057.00	0.0	0.0	0.0	0.00	0.00	0.00
3,000.0	0.00	0.00	3,000.0	1,957.00	0.0	0.0	0.0	0.00	0.00	0.00
PARKMAN										
3,024.0	0.00	0.00	3,024.0	1,933.00	0.0	0.0	0.0	0.00	0.00	0.00
3,100.0	0.00	0.00	3,100.0	1,857.00	0.0	0.0	0.0	0.00	0.00	0.00
3,200.0	0.00	0.00	3,200.0	1,757.00	0.0	0.0	0.0	0.00	0.00	0.00
3,300.0	0.00	0.00	3,300.0	1,657.00	0.0	0.0	0.0	0.00	0.00	0.00
3,400.0	0.00	0.00	3,400.0	1,557.00	0.0	0.0	0.0	0.00	0.00	0.00
3,500.0	0.00	0.00	3,500.0	1,457.00	0.0	0.0	0.0	0.00	0.00	0.00
3,600.0	0.00	0.00	3,600.0	1,357.00	0.0	0.0	0.0	0.00	0.00	0.00
3,700.0	0.00	0.00	3,700.0	1,257.00	0.0	0.0	0.0	0.00	0.00	0.00
3,800.0	0.00	0.00	3,800.0	1,157.00	0.0	0.0	0.0	0.00	0.00	0.00
SUSSEX										
3,842.0	0.00	0.00	3,842.0	1,115.00	0.0	0.0	0.0	0.00	0.00	0.00
3,900.0	0.00	0.00	3,900.0	1,057.00	0.0	0.0	0.0	0.00	0.00	0.00
4,000.0	0.00	0.00	4,000.0	957.00	0.0	0.0	0.0	0.00	0.00	0.00
4,100.0	0.00	0.00	4,100.0	857.00	0.0	0.0	0.0	0.00	0.00	0.00
4,200.0	0.00	0.00	4,200.0	757.00	0.0	0.0	0.0	0.00	0.00	0.00
START NUDGE (2°/100ft BUR)										
4,258.0	0.00	0.00	4,258.0	699.00	0.0	0.0	0.0	0.00	0.00	0.00
4,300.0	0.84	170.22	4,300.0	657.00	-0.3	0.1	0.1	2.00	2.00	0.00
4,400.0	2.84	170.22	4,399.9	557.06	-3.5	0.6	1.3	2.00	2.00	0.00
SHANNON										
4,402.1	2.88	170.22	4,402.0	555.00	-3.6	0.6	1.3	2.00	2.00	0.00
4,500.0	4.84	170.22	4,499.7	457.29	-10.1	1.7	3.7	2.00	2.00	0.00

Planning Report



Database:	EDM 5000.1 Single User Db	Local Co-ordinate Reference:	Well FAIRVIEW 1 - Slot FAIRVIEW 1
Company:	EXTRACTION OIL & GAS	TVD Reference:	KB-EST @ 4957.0usft
Project:	WELD COUNTY, COLORADO (NAD 83)	MD Reference:	KB-EST @ 4957.0usft
Site:	NW SW SEC. 5 T2N R68W 6th P.M.	North Reference:	True
Well:	FAIRVIEW 1	Survey Calculation Method:	Minimum Curvature
Wellbore:	ORIGINAL WELLBORE		
Design:	PROPOSAL #4		

Planned Survey										
MD (usft)	Inc (°)	Azi (°)	TVD (usft)	SS (usft)	+N/-S (usft)	+E/-W (usft)	Vertical Section (usft)	Dogleg Rate (°/100usft)	Build Rate (°/100usft)	Turn Rate (°/100usft)
4,600.0	6.84	170.22	4,599.2	357.81	-20.1	3.5	7.4	2.00	2.00	0.00
4,700.0	8.84	170.22	4,698.2	258.75	-33.5	5.8	12.3	2.00	2.00	0.00
4,800.0	10.84	170.22	4,796.8	160.23	-50.4	8.7	18.5	2.00	2.00	0.00
4,900.0	12.84	170.22	4,894.6	62.36	-70.6	12.2	25.9	2.00	2.00	0.00
5,000.0	14.84	170.22	4,991.7	-34.73	-94.2	16.2	34.5	2.00	2.00	0.00
5,100.0	16.84	170.22	5,087.9	-130.93	-121.1	20.9	44.4	2.00	2.00	0.00
5,200.0	18.84	170.22	5,183.1	-226.12	-151.3	26.1	55.5	2.00	2.00	0.00
5,300.0	20.84	170.22	5,277.2	-320.18	-184.7	31.8	67.7	2.00	2.00	0.00
5,400.0	22.84	170.22	5,370.0	-412.99	-221.4	38.2	81.2	2.00	2.00	0.00
5,500.0	24.84	170.22	5,461.5	-504.46	-261.2	45.0	95.8	2.00	2.00	0.00
EOB TO 25° INC										
5,508.0	25.00	170.22	5,468.7	-511.74	-264.5	45.6	97.0	1.96	1.96	0.00
5,600.0	25.00	170.22	5,552.1	-595.09	-302.8	52.2	111.1	0.00	0.00	0.00
5,700.0	25.00	170.22	5,642.7	-685.72	-344.5	59.4	126.3	0.00	0.00	0.00
5,800.0	25.00	170.22	5,733.3	-776.35	-386.1	66.6	141.6	0.00	0.00	0.00
5,900.0	25.00	170.22	5,824.0	-866.98	-427.8	73.7	156.9	0.00	0.00	0.00
6,000.0	25.00	170.22	5,914.6	-957.60	-469.4	80.9	172.2	0.00	0.00	0.00
6,100.0	25.00	170.22	6,005.2	-1,048.23	-511.1	88.1	187.5	0.00	0.00	0.00
6,200.0	25.00	170.22	6,095.9	-1,138.86	-552.7	95.3	202.7	0.00	0.00	0.00
6,300.0	25.00	170.22	6,186.5	-1,229.49	-594.4	102.5	218.0	0.00	0.00	0.00
6,400.0	25.00	170.22	6,277.1	-1,320.12	-636.1	109.6	233.3	0.00	0.00	0.00
6,500.0	25.00	170.22	6,367.7	-1,410.75	-677.7	116.8	248.6	0.00	0.00	0.00
6,600.0	25.00	170.22	6,458.4	-1,501.37	-719.4	124.0	263.8	0.00	0.00	0.00
6,700.0	25.00	170.22	6,549.0	-1,592.00	-761.0	131.2	279.1	0.00	0.00	0.00
6,800.0	25.00	170.22	6,639.6	-1,682.63	-802.7	138.4	294.4	0.00	0.00	0.00
SHARON SPRINGS										
6,808.1	25.00	170.22	6,647.0	-1,690.00	-806.0	138.9	295.6	0.00	0.00	0.00
NIORARA										
6,873.2	25.00	170.22	6,706.0	-1,749.00	-833.2	143.6	305.6	0.00	0.00	0.00
6,900.0	25.00	170.22	6,730.3	-1,773.26	-844.3	145.5	309.7	0.00	0.00	0.00
7,000.0	25.00	170.22	6,820.9	-1,863.89	-886.0	152.7	324.9	0.00	0.00	0.00
7,100.0	25.00	170.22	6,911.5	-1,954.52	-927.6	159.9	340.2	0.00	0.00	0.00
7,200.0	25.00	170.22	7,002.1	-2,045.14	-969.3	167.1	355.5	0.00	0.00	0.00
FORT HAYS										
7,266.0	25.00	170.22	7,062.0	-2,105.00	-996.8	171.8	365.6	0.00	0.00	0.00
7,300.0	25.00	170.22	7,092.8	-2,135.77	-1,010.9	174.2	370.8	0.00	0.00	0.00
CODELL										
7,310.2	25.00	170.22	7,102.0	-2,145.00	-1,015.2	175.0	372.3	0.00	0.00	0.00
7,400.0	25.00	170.22	7,183.4	-2,226.40	-1,052.6	181.4	386.0	0.00	0.00	0.00
7,500.0	25.00	170.22	7,274.0	-2,317.03	-1,094.2	188.6	401.3	0.00	0.00	0.00
START BUILD & TURN										
7,595.3	25.00	170.22	7,360.4	-2,403.39	-1,133.9	195.4	415.9	0.00	0.00	0.00
7,600.0	25.08	169.13	7,364.7	-2,407.66	-1,135.9	195.8	416.6	10.00	1.70	-23.28
7,700.0	28.50	148.15	7,454.1	-2,497.11	-1,177.1	212.4	441.1	10.00	3.42	-20.98
7,800.0	34.39	132.56	7,539.5	-2,582.52	-1,216.5	245.9	481.7	10.00	5.89	-15.59
7,900.0	41.71	121.45	7,618.3	-2,661.31	-1,253.1	295.2	537.3	10.00	7.32	-11.11
8,000.0	49.83	113.26	7,688.1	-2,731.06	-1,285.6	358.9	606.1	10.00	8.11	-8.19
8,100.0	58.39	106.87	7,746.7	-2,789.68	-1,313.1	434.9	686.1	10.00	8.56	-6.39
8,200.0	67.22	101.58	7,792.4	-2,835.36	-1,334.8	521.0	774.8	10.00	8.83	-5.29
J SAND										
8,292.9	75.55	97.25	7,822.0	-2,865.00	-1,349.1	607.8	862.7	10.00	8.98	-4.66
8,300.0	76.20	96.94	7,823.7	-2,866.73	-1,350.0	614.6	869.5	10.00	9.03	-4.44
8,400.0	85.26	92.64	7,839.8	-2,882.84	-1,358.1	712.9	967.4	10.00	9.06	-4.29

Planning Report



Database:	EDM 5000.1 Single User Db	Local Co-ordinate Reference:	Well FAIRVIEW 1 - Slot FAIRVIEW 1
Company:	EXTRACTION OIL & GAS	TVD Reference:	KB-EST @ 4957.0usft
Project:	WELD COUNTY, COLORADO (NAD 83)	MD Reference:	KB-EST @ 4957.0usft
Site:	NW SW SEC. 5 T2N R68W 6th P.M.	North Reference:	True
Well:	FAIRVIEW 1	Survey Calculation Method:	Minimum Curvature
Wellbore:	ORIGINAL WELLBORE		
Design:	PROPOSAL #4		

Planned Survey										
MD (usft)	Inc (°)	Azi (°)	TVD (usft)	SS (usft)	+N/-S (usft)	+E/-W (usft)	Vertical Section (usft)	Dogleg Rate (°/100usft)	Build Rate (°/100usft)	Turn Rate (°/100usft)
LANDING PNT - FAIRVIEW 1 (P4)										
8,452.2	90.00	90.46	7,842.0	-2,885.00	-1,359.5	765.0	1,018.8	10.00	9.09	-4.18
8,500.0	90.00	90.46	7,842.0	-2,885.00	-1,359.9	812.8	1,065.7	0.00	0.00	0.00
8,600.0	90.00	90.46	7,842.0	-2,885.00	-1,360.7	912.8	1,163.9	0.00	0.00	0.00
8,700.0	90.00	90.46	7,842.0	-2,885.00	-1,361.5	1,012.8	1,262.1	0.00	0.00	0.00
8,800.0	90.00	90.46	7,842.0	-2,885.00	-1,362.3	1,112.8	1,360.3	0.00	0.00	0.00
8,900.0	90.00	90.46	7,842.0	-2,885.00	-1,363.1	1,212.8	1,458.4	0.00	0.00	0.00
9,000.0	90.00	90.46	7,842.0	-2,885.00	-1,363.9	1,312.8	1,556.6	0.00	0.00	0.00
9,100.0	90.00	90.46	7,842.0	-2,885.00	-1,364.8	1,412.8	1,654.8	0.00	0.00	0.00
9,200.0	90.00	90.46	7,842.0	-2,885.00	-1,365.6	1,512.8	1,753.0	0.00	0.00	0.00
9,300.0	90.00	90.46	7,842.0	-2,885.00	-1,366.4	1,612.8	1,851.2	0.00	0.00	0.00
9,400.0	90.00	90.46	7,842.0	-2,885.00	-1,367.2	1,712.8	1,949.3	0.00	0.00	0.00
9,500.0	90.00	90.46	7,842.0	-2,885.00	-1,368.0	1,812.8	2,047.5	0.00	0.00	0.00
9,600.0	90.00	90.46	7,842.0	-2,885.00	-1,368.8	1,912.8	2,145.7	0.00	0.00	0.00
9,700.0	90.00	90.46	7,842.0	-2,885.00	-1,369.6	2,012.7	2,243.9	0.00	0.00	0.00
9,800.0	90.00	90.46	7,842.0	-2,885.00	-1,370.4	2,112.7	2,342.1	0.00	0.00	0.00
9,900.0	90.00	90.46	7,842.0	-2,885.00	-1,371.2	2,212.7	2,440.2	0.00	0.00	0.00
10,000.0	90.00	90.46	7,842.0	-2,885.00	-1,372.0	2,312.7	2,538.4	0.00	0.00	0.00
10,100.0	90.00	90.46	7,842.0	-2,885.00	-1,372.8	2,412.7	2,636.6	0.00	0.00	0.00
10,200.0	90.00	90.46	7,842.0	-2,885.00	-1,373.6	2,512.7	2,734.8	0.00	0.00	0.00
10,300.0	90.00	90.46	7,842.0	-2,885.00	-1,374.4	2,612.7	2,833.0	0.00	0.00	0.00
10,400.0	90.00	90.46	7,842.0	-2,885.00	-1,375.2	2,712.7	2,931.1	0.00	0.00	0.00
10,500.0	90.00	90.46	7,842.0	-2,885.00	-1,376.0	2,812.7	3,029.3	0.00	0.00	0.00
10,600.0	90.00	90.46	7,842.0	-2,885.00	-1,376.8	2,912.7	3,127.5	0.00	0.00	0.00
10,700.0	90.00	90.46	7,842.0	-2,885.00	-1,377.6	3,012.7	3,225.7	0.00	0.00	0.00
10,800.0	90.00	90.46	7,842.0	-2,885.00	-1,378.4	3,112.7	3,323.9	0.00	0.00	0.00
10,900.0	90.00	90.46	7,842.0	-2,885.00	-1,379.2	3,212.7	3,422.0	0.00	0.00	0.00
11,000.0	90.00	90.46	7,842.0	-2,885.00	-1,380.0	3,312.7	3,520.2	0.00	0.00	0.00
11,100.0	90.00	90.46	7,842.0	-2,885.00	-1,380.8	3,412.7	3,618.4	0.00	0.00	0.00
11,200.0	90.00	90.46	7,842.0	-2,885.00	-1,381.6	3,512.7	3,716.6	0.00	0.00	0.00
11,300.0	90.00	90.46	7,842.0	-2,885.00	-1,382.4	3,612.7	3,814.8	0.00	0.00	0.00
11,400.0	90.00	90.46	7,842.0	-2,885.00	-1,383.3	3,712.7	3,913.0	0.00	0.00	0.00
11,500.0	90.00	90.46	7,842.0	-2,885.00	-1,384.1	3,812.7	4,011.1	0.00	0.00	0.00
11,600.0	90.00	90.46	7,842.0	-2,885.00	-1,384.9	3,912.7	4,109.3	0.00	0.00	0.00
11,700.0	90.00	90.46	7,842.0	-2,885.00	-1,385.7	4,012.7	4,207.5	0.00	0.00	0.00
11,800.0	90.00	90.46	7,842.0	-2,885.00	-1,386.5	4,112.7	4,305.7	0.00	0.00	0.00
11,900.0	90.00	90.46	7,842.0	-2,885.00	-1,387.3	4,212.7	4,403.9	0.00	0.00	0.00
12,000.0	90.00	90.46	7,842.0	-2,885.00	-1,388.1	4,312.7	4,502.0	0.00	0.00	0.00
12,100.0	90.00	90.46	7,842.0	-2,885.00	-1,388.9	4,412.7	4,600.2	0.00	0.00	0.00
12,200.0	90.00	90.46	7,842.0	-2,885.00	-1,389.7	4,512.7	4,698.4	0.00	0.00	0.00
12,300.0	90.00	90.46	7,842.0	-2,885.00	-1,390.5	4,612.7	4,796.6	0.00	0.00	0.00
12,400.0	90.00	90.46	7,842.0	-2,885.00	-1,391.3	4,712.7	4,894.8	0.00	0.00	0.00
12,500.0	90.00	90.46	7,842.0	-2,885.00	-1,392.1	4,812.7	4,992.9	0.00	0.00	0.00
12,600.0	90.00	90.46	7,842.0	-2,885.00	-1,392.9	4,912.7	5,091.1	0.00	0.00	0.00
12,700.0	90.00	90.46	7,842.0	-2,885.00	-1,393.7	5,012.7	5,189.3	0.00	0.00	0.00
12,800.0	90.00	90.46	7,842.0	-2,885.00	-1,394.5	5,112.6	5,287.5	0.00	0.00	0.00
12,900.0	90.00	90.46	7,842.0	-2,885.00	-1,395.3	5,212.6	5,385.7	0.00	0.00	0.00
13,000.0	90.00	90.46	7,842.0	-2,885.00	-1,396.1	5,312.6	5,483.8	0.00	0.00	0.00
13,100.0	90.00	90.46	7,842.0	-2,885.00	-1,396.9	5,412.6	5,582.0	0.00	0.00	0.00
13,200.0	90.00	90.46	7,842.0	-2,885.00	-1,397.7	5,512.6	5,680.2	0.00	0.00	0.00
13,300.0	90.00	90.46	7,842.0	-2,885.00	-1,398.5	5,612.6	5,778.4	0.00	0.00	0.00
13,400.0	90.00	90.46	7,842.0	-2,885.00	-1,399.3	5,712.6	5,876.6	0.00	0.00	0.00
13,500.0	90.00	90.46	7,842.0	-2,885.00	-1,400.1	5,812.6	5,974.7	0.00	0.00	0.00
13,600.0	90.00	90.46	7,842.0	-2,885.00	-1,400.9	5,912.6	6,072.9	0.00	0.00	0.00

Planning Report



Database:	EDM 5000.1 Single User Db	Local Co-ordinate Reference:	Well FAIRVIEW 1 - Slot FAIRVIEW 1
Company:	EXTRACTION OIL & GAS	TVD Reference:	KB-EST @ 4957.0usft
Project:	WELD COUNTY, COLORADO (NAD 83)	MD Reference:	KB-EST @ 4957.0usft
Site:	NW SW SEC. 5 T2N R68W 6th P.M.	North Reference:	True
Well:	FAIRVIEW 1	Survey Calculation Method:	Minimum Curvature
Wellbore:	ORIGINAL WELLBORE		
Design:	PROPOSAL #4		

Planned Survey										
MD (usft)	Inc (°)	Azi (°)	TVD (usft)	SS (usft)	+N/-S (usft)	+E/-W (usft)	Vertical Section (usft)	Dogleg Rate (°/100usft)	Build Rate (°/100usft)	Turn Rate (°/100usft)
13,700.0	90.00	90.46	7,842.0	-2,885.00	-1,401.7	6,012.6	6,171.1	0.00	0.00	0.00
13,800.0	90.00	90.46	7,842.0	-2,885.00	-1,402.6	6,112.6	6,269.3	0.00	0.00	0.00
13,900.0	90.00	90.46	7,842.0	-2,885.00	-1,403.4	6,212.6	6,367.5	0.00	0.00	0.00
14,000.0	90.00	90.46	7,842.0	-2,885.00	-1,404.2	6,312.6	6,465.6	0.00	0.00	0.00
14,100.0	90.00	90.46	7,842.0	-2,885.00	-1,405.0	6,412.6	6,563.8	0.00	0.00	0.00
14,200.0	90.00	90.46	7,842.0	-2,885.00	-1,405.8	6,512.6	6,662.0	0.00	0.00	0.00
14,300.0	90.00	90.46	7,842.0	-2,885.00	-1,406.6	6,612.6	6,760.2	0.00	0.00	0.00
14,400.0	90.00	90.46	7,842.0	-2,885.00	-1,407.4	6,712.6	6,858.4	0.00	0.00	0.00
14,500.0	90.00	90.46	7,842.0	-2,885.00	-1,408.2	6,812.6	6,956.5	0.00	0.00	0.00
14,600.0	90.00	90.46	7,842.0	-2,885.00	-1,409.0	6,912.6	7,054.7	0.00	0.00	0.00
BHL - FAIRVIEW 1 (P4)										
14,672.7	90.00	90.46	7,842.0	-2,885.00	-1,409.6	6,985.3	7,126.1	0.00	0.00	0.00

Formations						
MD (usft)	TVD (usft)	Name	Lithology	Dip (°)	Dip Direction (°)	
3,024.0	3,024.0	PARKMAN		0.00		
3,842.0	3,842.0	SUSSEX		0.00		
4,402.1	4,402.0	SHANNON		0.00		
6,808.1	6,647.0	SHARON SPRINGS		0.00		
6,873.2	6,706.0	NIOBRARA		0.00		
7,266.0	7,062.0	FORT HAYS		0.00		
7,310.2	7,102.0	CODELL		0.00		
8,292.9	7,822.0	J SAND		0.00		

Plan Annotations				
MD (usft)	TVD (usft)	Local Coordinates		Comment
		+N/-S (usft)	+E/-W (usft)	
4,258.0	4,258.0	0.0	0.0	START NUDGE (2°/100ft BUR)
5,508.0	5,468.7	-264.5	45.6	EOB TO 25° INC
7,595.3	7,360.4	-1,133.9	195.4	START BUILD & TURN
8,452.2	7,842.0	-1,359.5	765.0	LANDING PNT - FAIRVIEW 1 (P4)
14,672.7	7,842.0	-1,409.6	6,985.3	BHL - FAIRVIEW 1 (P4)