

# **PDC ENERGY**

**WELD COUNTY, COLORADO  
NE SW SEC. 7 T4N R64W 6th P.M.  
HONEBEIN 7G-323**

**ORIGINAL WELLBORE**

**09 July, 2015**

**Plan: PROPOSAL #2**



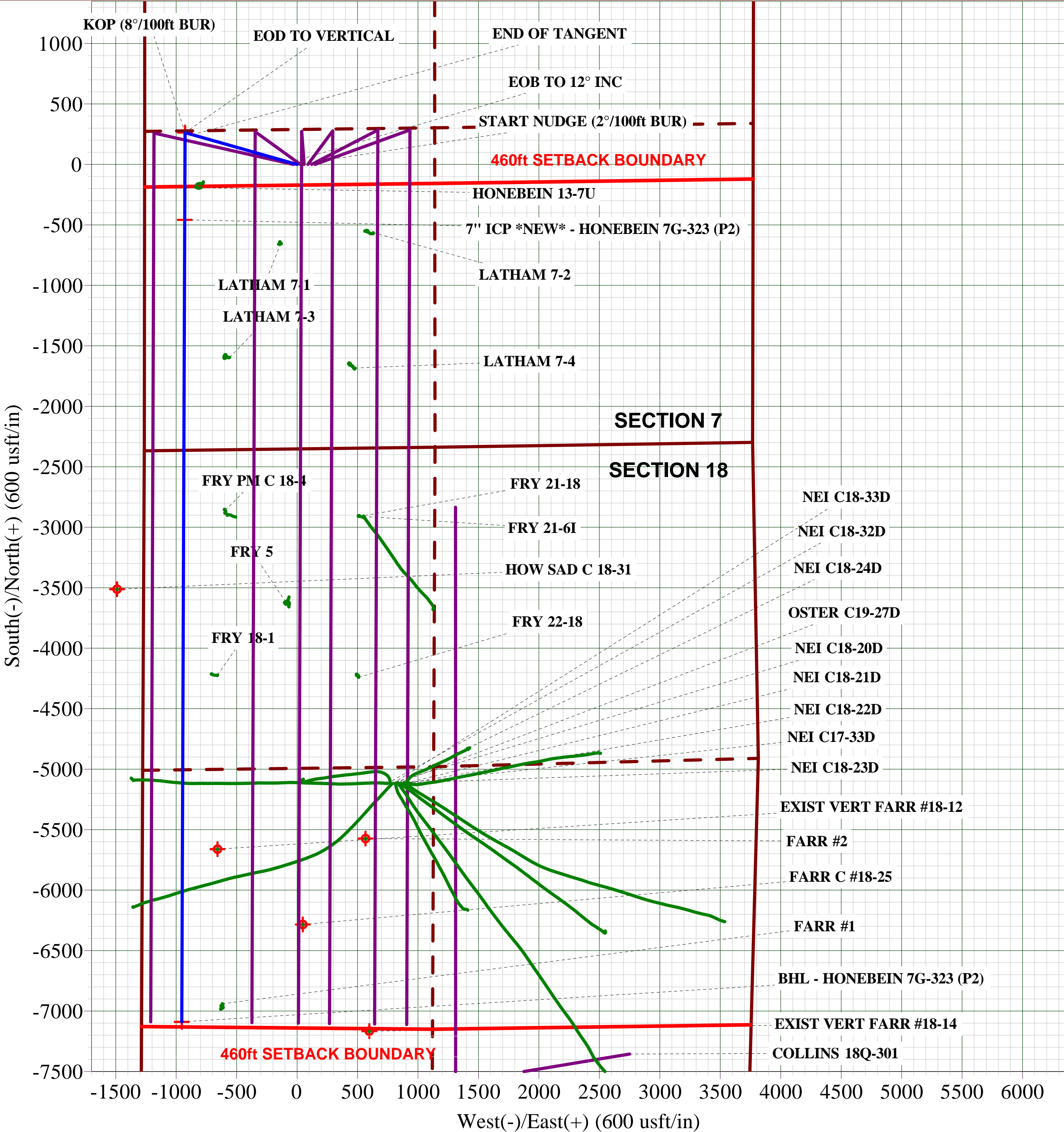
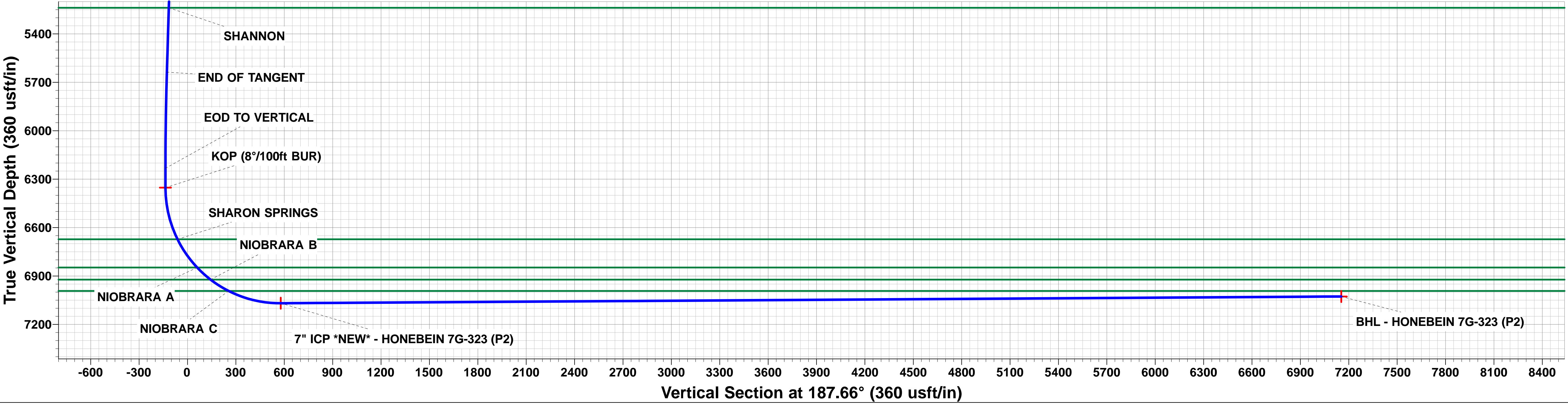
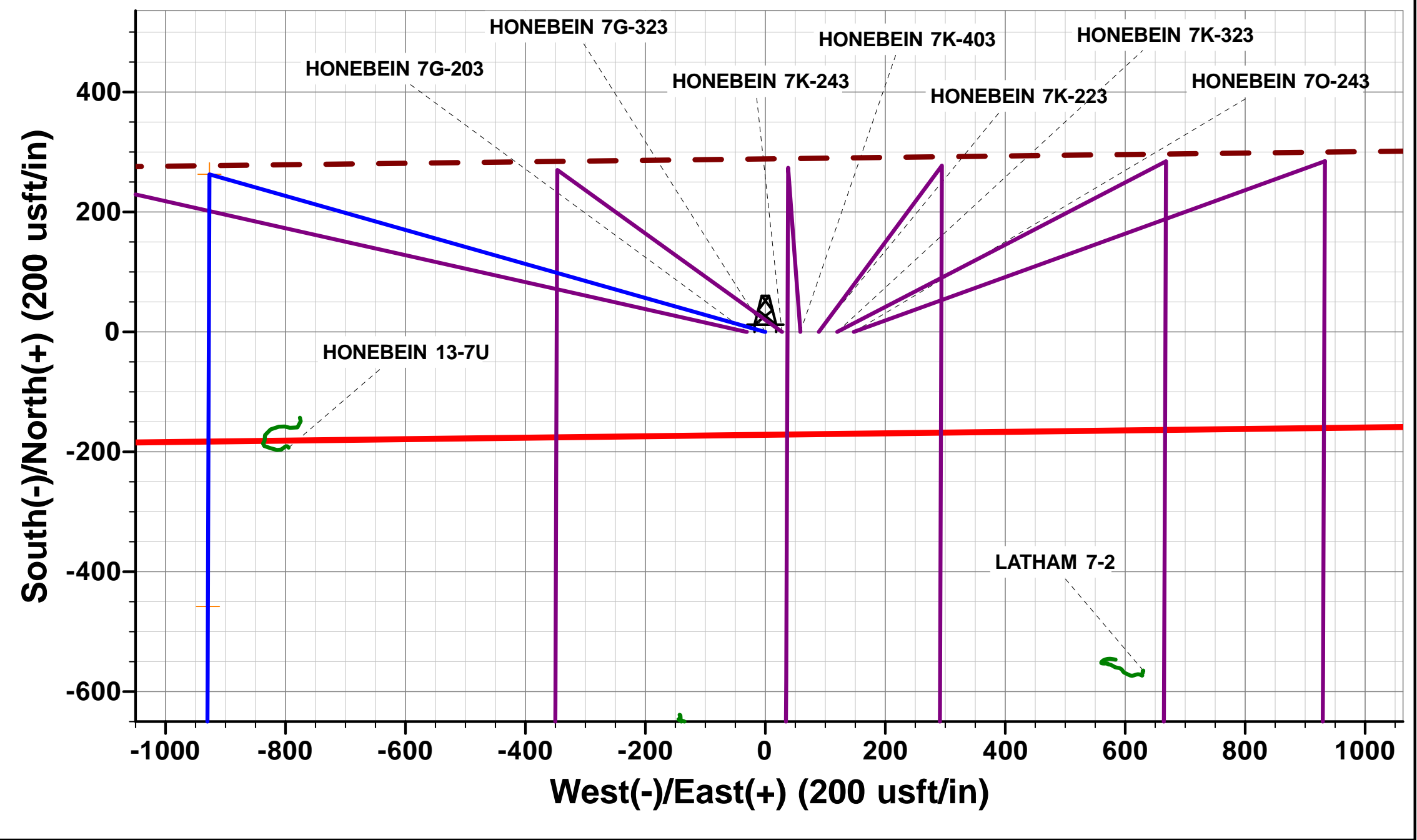
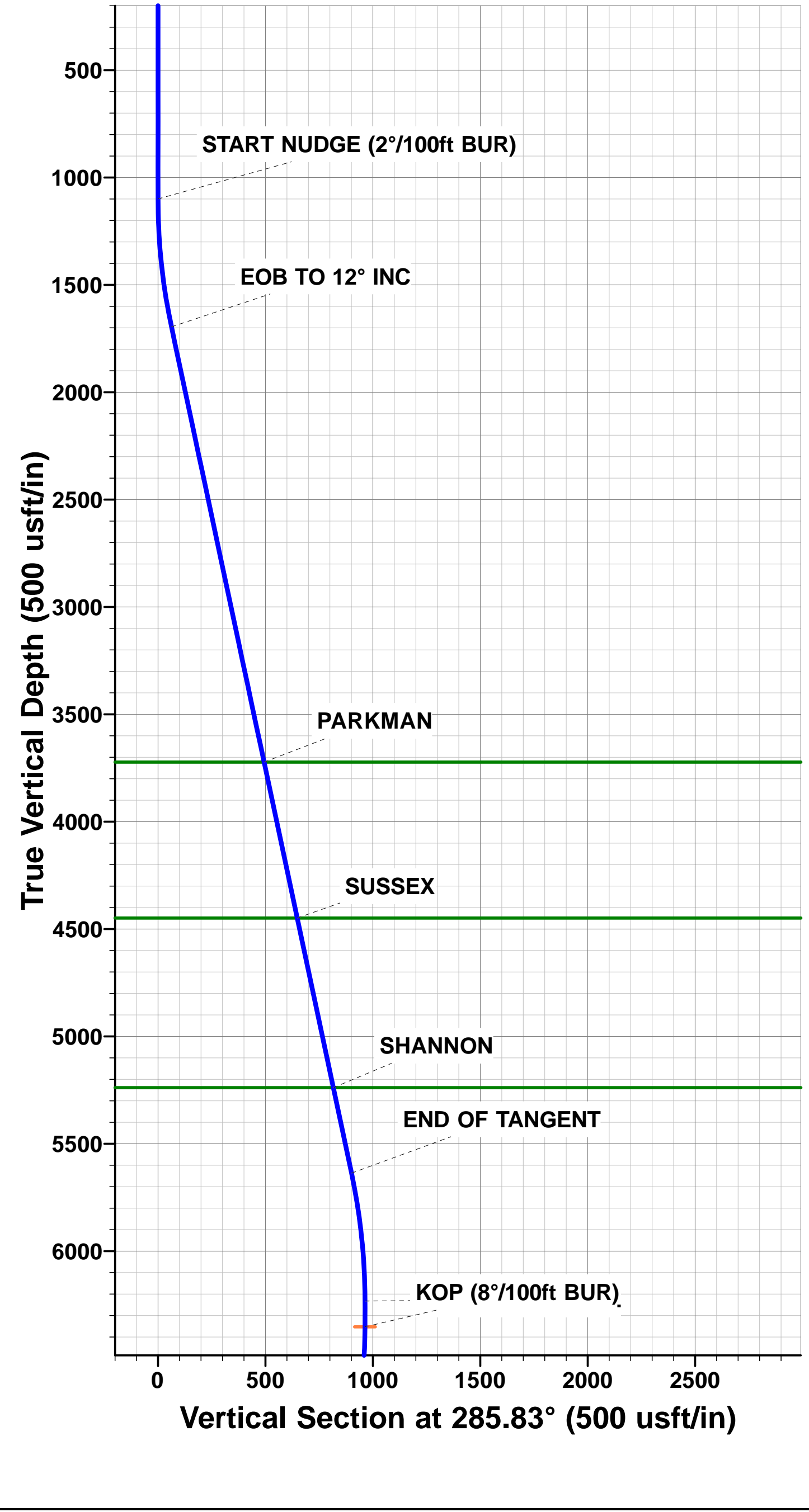


Project: WELD COUNTY, COLORADO  
Site: NE SW SEC. 7 T4N R64W 6th P.M.  
Well: HONEBEIN 7G-323  
Wellbore: ORIGINAL WELLBORE  
Design: PROPOSAL #2

ANNOTATIONS									
TVD	MD	Inc	Azi	+N/-S	+E/-W	VSec	Dep	Annotation	
1100.0	1100.0	0.00	0.00	0.0	0.0	0.0	0.0	START NUDGE (2°/100ft BUR)	
1695.8	1700.2	12.00	285.83	17.1	-60.3	-8.9	62.6	EOB TO 12° INC	
5636.7	5729.2	12.00	285.83	245.7	-866.4	-128.0	900.6	END OF TANGENT	
6232.5	6329.4	0.00	0.00	262.8	-926.7	-136.9	963.2	EOD TO VERTICAL	
6352.5	6449.4	0.00	0.00	262.8	-926.7	-136.9	963.2	KOP (8°/100ft BUR)	
7068.7	7578.9	90.36	180.21	-457.9	-929.3	577.8	1684.0	7" ICP *NEW* - HONEBEIN 7G-323 (P2)	
7027.0	14210.5	90.36	180.21	-7089.4	-953.9	7153.2	8315.4	BHL - HONEBEIN 7G-323 (P2)	

PROPOSED LOCAL COORDINATES:  
  
SHL: 2352ft FSL & 1260t FWL Sec 7  
  
7" ICP \*NEW\*: 1906.3ft FSL & 332ft FWL Sec 7  
  
BHL: 500ft FSL & 332ft FWL of Sec 18

WELLBORE TARGET DETAILS (LAT/LONG)					
Name	TVD	+N/-S	+E/-W	Latitude	Longitude
KOP - HONEBEIN 7G-323 (P2)	6352.5	262.8	-926.7	40.326651	-104.600844
BHL - HONEBEIN 7G-323 (P2)	7027.0	-7089.4	-953.9	40.306470	-104.600940
7" ICP *NEW* - HONEBEIN 7G-323 (P2)	7068.7	-457.9	-929.3	40.324673	-104.600853



# Planning Report



<b>Database:</b>	EDM 5000.1 Single User Db	<b>Local Co-ordinate Reference:</b>	Well HONEBEIN 7G-323
<b>Company:</b>	PDC ENERGY	<b>TVD Reference:</b>	KB-EST @ 4860.5usft (Original Well Elev)
<b>Project:</b>	WELD COUNTY, COLORADO	<b>MD Reference:</b>	KB-EST @ 4860.5usft (Original Well Elev)
<b>Site:</b>	NE SW SEC. 7 T4N R64W 6th P.M.	<b>North Reference:</b>	True
<b>Well:</b>	HONEBEIN 7G-323	<b>Survey Calculation Method:</b>	Minimum Curvature
<b>Wellbore:</b>	ORIGINAL WELLBORE		
<b>Design:</b>	PROPOSAL #2		

<b>Project</b>	WELD COUNTY, COLORADO		
<b>Map System:</b>	US State Plane 1983	<b>System Datum:</b>	Mean Sea Level
<b>Geo Datum:</b>	North American Datum 1983		
<b>Map Zone:</b>	Colorado Northern Zone		Using geodetic scale factor

<b>Site</b>	NE SW SEC. 7 T4N R64W 6th P.M.		
<b>Site Position:</b>		<b>Northing:</b>	1,362,859.07 usft
<b>From:</b>	Lat/Long	<b>Easting:</b>	3,251,768.07 usft
<b>Position Uncertainty:</b>	0.0 usft	<b>Slot Radius:</b>	1.10000ft
		<b>Latitude:</b>	40.325930
		<b>Longitude:</b>	-104.596990
		<b>Grid Convergence:</b>	0.58 °

<b>Well</b>	HONEBEIN 7G-323		
<b>Well Position</b>	<b>+N/-S</b>	0.0 usft	<b>Northing:</b>
	<b>+E/-W</b>	-147.8 usft	<b>Easting:</b>
<b>Position Uncertainty</b>		0.0 usft	<b>Wellhead Elevation:</b>
			<b>Latitude:</b>
			<b>Longitude:</b>
			<b>Ground Level:</b>

<b>Wellbore</b>	ORIGINAL WELLBORE				
<b>Magnetics</b>	<b>Model Name</b>	<b>Sample Date</b>	<b>Declination (°)</b>	<b>Dip Angle (°)</b>	<b>Field Strength (nT)</b>
	IGRF2015	30/06/2015	8.32	66.87	52,595

<b>Design</b>	PROPOSAL #2			
<b>Audit Notes:</b>				
<b>Version:</b>	<b>Phase:</b>	PROTOTYPE	<b>Tie On Depth:</b>	0.0
<b>Vertical Section:</b>	<b>Depth From (TVD) (usft)</b>	<b>+N/-S (usft)</b>	<b>+E/-W (usft)</b>	<b>Direction (°)</b>
	7,027.0	0.0	0.0	187.66

<b>Plan Sections</b>											
MD (usft)	Inc (°)	Azi (°)	Vertical Depth	SS (usft)	+N/-S (usft)	+E/-W (usft)	Dogleg Rate (°/100usf)	Build Rate (°/100usf)	Turn Rate (°/100usf)	TFO (°)	Target
0.0	0.00	0.00	0.0	-4,860.5	0.0	0.0	0.00	0.00	0.00	0.00	
1,100.0	0.00	0.00	1,100.0	-3,760.5	0.0	0.0	0.00	0.00	0.00	0.00	
1,700.2	12.00	285.83	1,695.8	-3,164.7	17.1	-60.3	2.00	2.00	0.00	285.83	
5,729.2	12.00	285.83	5,636.7	776.2	245.7	-866.4	0.00	0.00	0.00	0.00	
6,329.4	0.00	0.00	6,232.5	1,372.0	262.8	-926.7	2.00	-2.00	0.00	180.00	
6,449.4	0.00	0.00	6,352.5	1,492.0	262.8	-926.7	0.00	0.00	0.00	0.00	KOP - HONEBEIN
7,578.9	90.36	180.21	7,068.7	2,208.2	-457.9	-929.3	8.00	8.00	0.00	180.21	
14,210.5	90.36	180.21	7,027.0	2,166.5	-7,089.4	-953.9	0.00	0.00	0.00	85.84	BHL - HONEBEIN

# Planning Report



<b>Database:</b>	EDM 5000.1 Single User Db	<b>Local Co-ordinate Reference:</b>	Well HONEBEIN 7G-323
<b>Company:</b>	PDC ENERGY	<b>TVD Reference:</b>	KB-EST @ 4860.5usft (Original Well Elev)
<b>Project:</b>	WELD COUNTY, COLORADO	<b>MD Reference:</b>	KB-EST @ 4860.5usft (Original Well Elev)
<b>Site:</b>	NE SW SEC. 7 T4N R64W 6th P.M.	<b>North Reference:</b>	True
<b>Well:</b>	HONEBEIN 7G-323	<b>Survey Calculation Method:</b>	Minimum Curvature
<b>Wellbore:</b>	ORIGINAL WELLBORE		
<b>Design:</b>	PROPOSAL #2		

## Planned Survey

MD (usft)	Inc (°)	Azi (°)	TVD (usft)	SS (usft)	+N/-S (usft)	+E/-W (usft)	Vertical Section (usft)	Dogleg Rate (°/100usft)	Build Rate (°/100usft)	Turn Rate (°/100usft)
0.0	0.00	0.00	0.0	4,860.50	0.0	0.0	0.0	0.00	0.00	0.00
100.0	0.00	0.00	100.0	4,760.50	0.0	0.0	0.0	0.00	0.00	0.00
200.0	0.00	0.00	200.0	4,660.50	0.0	0.0	0.0	0.00	0.00	0.00
300.0	0.00	0.00	300.0	4,560.50	0.0	0.0	0.0	0.00	0.00	0.00
400.0	0.00	0.00	400.0	4,460.50	0.0	0.0	0.0	0.00	0.00	0.00
500.0	0.00	0.00	500.0	4,360.50	0.0	0.0	0.0	0.00	0.00	0.00
600.0	0.00	0.00	600.0	4,260.50	0.0	0.0	0.0	0.00	0.00	0.00
700.0	0.00	0.00	700.0	4,160.50	0.0	0.0	0.0	0.00	0.00	0.00
800.0	0.00	0.00	800.0	4,060.50	0.0	0.0	0.0	0.00	0.00	0.00
900.0	0.00	0.00	900.0	3,960.50	0.0	0.0	0.0	0.00	0.00	0.00
1,000.0	0.00	0.00	1,000.0	3,860.50	0.0	0.0	0.0	0.00	0.00	0.00
<b>START NUDGE (2°/100ft BUR)</b>										
1,100.0	0.00	0.00	1,100.0	3,760.50	0.0	0.0	0.0	0.00	0.00	0.00
1,200.0	2.00	285.83	1,200.0	3,660.52	0.5	-1.7	-0.2	2.00	2.00	0.00
1,300.0	4.00	285.83	1,299.8	3,560.66	1.9	-6.7	-1.0	2.00	2.00	0.00
1,400.0	6.00	285.83	1,399.5	3,461.05	4.3	-15.1	-2.2	2.00	2.00	0.00
1,500.0	8.00	285.83	1,498.7	3,361.80	7.6	-26.8	-4.0	2.00	2.00	0.00
1,600.0	10.00	285.83	1,597.5	3,263.03	11.9	-41.9	-6.2	2.00	2.00	0.00
1,700.0	12.00	285.83	1,695.6	3,164.88	17.1	-60.2	-8.9	2.00	2.00	0.00
<b>EOB TO 12° INC</b>										
1,700.2	12.00	285.83	1,695.8	3,164.68	17.1	-60.3	-8.9	2.00	2.00	0.00
1,800.0	12.00	285.83	1,793.4	3,067.06	22.8	-80.2	-11.9	0.00	0.00	0.00
1,900.0	12.00	285.83	1,891.2	2,969.25	28.4	-100.2	-14.8	0.00	0.00	0.00
2,000.0	12.00	285.83	1,989.1	2,871.44	34.1	-120.3	-17.8	0.00	0.00	0.00
2,100.0	12.00	285.83	2,086.9	2,773.62	39.8	-140.3	-20.7	0.00	0.00	0.00
2,200.0	12.00	285.83	2,184.7	2,675.81	45.5	-160.3	-23.7	0.00	0.00	0.00
2,300.0	12.00	285.83	2,282.5	2,578.00	51.1	-180.3	-26.6	0.00	0.00	0.00
2,400.0	12.00	285.83	2,380.3	2,480.18	56.8	-200.3	-29.6	0.00	0.00	0.00
2,500.0	12.00	285.83	2,478.1	2,382.37	62.5	-220.3	-32.5	0.00	0.00	0.00
2,600.0	12.00	285.83	2,575.9	2,284.56	68.1	-240.3	-35.5	0.00	0.00	0.00
2,700.0	12.00	285.83	2,673.8	2,186.74	73.8	-260.3	-38.5	0.00	0.00	0.00
2,800.0	12.00	285.83	2,771.6	2,088.93	79.5	-280.3	-41.4	0.00	0.00	0.00
2,900.0	12.00	285.83	2,869.4	1,991.12	85.2	-300.3	-44.4	0.00	0.00	0.00
3,000.0	12.00	285.83	2,967.2	1,893.30	90.8	-320.3	-47.3	0.00	0.00	0.00
3,100.0	12.00	285.83	3,065.0	1,795.49	96.5	-340.4	-50.3	0.00	0.00	0.00
3,200.0	12.00	285.83	3,162.8	1,697.68	102.2	-360.4	-53.2	0.00	0.00	0.00
3,300.0	12.00	285.83	3,260.6	1,599.86	107.9	-380.4	-56.2	0.00	0.00	0.00
3,400.0	12.00	285.83	3,358.4	1,502.05	113.5	-400.4	-59.1	0.00	0.00	0.00
3,500.0	12.00	285.83	3,456.3	1,404.24	119.2	-420.4	-62.1	0.00	0.00	0.00
3,600.0	12.00	285.83	3,554.1	1,306.43	124.9	-440.4	-65.1	0.00	0.00	0.00
3,700.0	12.00	285.83	3,651.9	1,208.61	130.6	-460.4	-68.0	0.00	0.00	0.00
<b>PARKMAN</b>										
3,772.2	12.00	285.83	3,722.5	1,138.00	134.7	-474.9	-70.1	0.00	0.00	0.00
3,800.0	12.00	285.83	3,749.7	1,110.80	136.2	-480.4	-71.0	0.00	0.00	0.00
3,900.0	12.00	285.83	3,847.5	1,012.99	141.9	-500.4	-73.9	0.00	0.00	0.00
4,000.0	12.00	285.83	3,945.3	915.17	147.6	-520.4	-76.9	0.00	0.00	0.00
4,100.0	12.00	285.83	4,043.1	817.36	153.3	-540.4	-79.8	0.00	0.00	0.00
4,200.0	12.00	285.83	4,141.0	719.55	158.9	-560.5	-82.8	0.00	0.00	0.00
4,300.0	12.00	285.83	4,238.8	621.73	164.6	-580.5	-85.7	0.00	0.00	0.00
4,400.0	12.00	285.83	4,336.6	523.92	170.3	-600.5	-88.7	0.00	0.00	0.00
4,500.0	12.00	285.83	4,434.4	426.11	176.0	-620.5	-91.7	0.00	0.00	0.00
<b>SUSSEX</b>										
4,514.4	12.00	285.83	4,448.5	412.00	176.8	-623.4	-92.1	0.00	0.00	0.00
4,600.0	12.00	285.83	4,532.2	328.29	181.6	-640.5	-94.6	0.00	0.00	0.00



# Planning Report



<b>Database:</b>	EDM 5000.1 Single User Db	<b>Local Co-ordinate Reference:</b>	Well HONEBEIN 7G-323
<b>Company:</b>	PDC ENERGY	<b>TVD Reference:</b>	KB-EST @ 4860.5usft (Original Well Elev)
<b>Project:</b>	WELD COUNTY, COLORADO	<b>MD Reference:</b>	KB-EST @ 4860.5usft (Original Well Elev)
<b>Site:</b>	NE SW SEC. 7 T4N R64W 6th P.M.	<b>North Reference:</b>	True
<b>Well:</b>	HONEBEIN 7G-323	<b>Survey Calculation Method:</b>	Minimum Curvature
<b>Wellbore:</b>	ORIGINAL WELLBORE		
<b>Design:</b>	PROPOSAL #2		

Planned Survey										
MD (usft)	Inc (°)	Azi (°)	TVD (usft)	SS (usft)	+N/-S (usft)	+E/-W (usft)	Vertical Section (usft)	Dogleg Rate (°/100usft)	Build Rate (°/100usft)	Turn Rate (°/100usft)
4,700.0	12.00	285.83	4,630.0	230.48	187.3	-660.5	-97.6	0.00	0.00	0.00
4,800.0	12.00	285.83	4,727.8	132.67	193.0	-680.5	-100.5	0.00	0.00	0.00
4,900.0	12.00	285.83	4,825.6	34.85	198.7	-700.5	-103.5	0.00	0.00	0.00
5,000.0	12.00	285.83	4,923.5	-62.96	204.3	-720.5	-106.4	0.00	0.00	0.00
5,100.0	12.00	285.83	5,021.3	-160.77	210.0	-740.5	-109.4	0.00	0.00	0.00
5,200.0	12.00	285.83	5,119.1	-258.59	215.7	-760.6	-112.3	0.00	0.00	0.00
5,300.0	12.00	285.83	5,216.9	-356.40	221.4	-780.6	-115.3	0.00	0.00	0.00
<b>SHANNON</b>										
<b>5,322.1</b>	<b>12.00</b>	<b>285.83</b>	<b>5,238.5</b>	<b>-378.00</b>	<b>222.6</b>	<b>-785.0</b>	<b>-115.9</b>	<b>0.00</b>	<b>0.00</b>	<b>0.00</b>
5,400.0	12.00	285.83	5,314.7	-454.21	227.0	-800.6	-118.3	0.00	0.00	0.00
5,500.0	12.00	285.83	5,412.5	-552.03	232.7	-820.6	-121.2	0.00	0.00	0.00
5,600.0	12.00	285.83	5,510.3	-649.84	238.4	-840.6	-124.2	0.00	0.00	0.00
5,700.0	12.00	285.83	5,608.2	-747.65	244.1	-860.6	-127.1	0.00	0.00	0.00
<b>END OF TANGENT</b>										
<b>5,729.2</b>	<b>12.00</b>	<b>285.83</b>	<b>5,636.7</b>	<b>-776.21</b>	<b>245.7</b>	<b>-866.4</b>	<b>-128.0</b>	<b>0.00</b>	<b>0.00</b>	<b>0.00</b>
5,800.0	10.59	285.83	5,706.1	-845.64	249.5	-879.8	-130.0	2.00	-2.00	0.00
5,900.0	8.59	285.83	5,804.7	-944.24	254.0	-895.8	-132.3	2.00	-2.00	0.00
6,000.0	6.59	285.83	5,903.9	-1,043.36	257.6	-908.5	-134.2	2.00	-2.00	0.00
6,100.0	4.59	285.83	6,003.4	-1,142.88	260.3	-917.9	-135.6	2.00	-2.00	0.00
6,200.0	2.59	285.83	6,103.2	-1,242.68	262.0	-923.9	-136.5	2.00	-2.00	0.00
6,300.0	0.59	285.83	6,203.1	-1,342.63	262.8	-926.6	-136.9	2.00	-2.00	0.00
<b>EOD TO VERTICAL</b>										
<b>6,329.4</b>	<b>0.00</b>	<b>0.00</b>	<b>6,232.5</b>	<b>-1,372.03</b>	<b>262.8</b>	<b>-926.7</b>	<b>-136.9</b>	<b>2.00</b>	<b>-2.00</b>	<b>0.00</b>
6,400.0	0.00	0.00	6,303.1	-1,442.63	262.8	-926.7	-136.9	0.00	0.00	0.00
<b>KOP (8°/100ft BUR)</b>										
<b>6,449.4</b>	<b>0.00</b>	<b>0.00</b>	<b>6,352.5</b>	<b>-1,492.03</b>	<b>262.8</b>	<b>-926.7</b>	<b>-136.9</b>	<b>0.00</b>	<b>0.00</b>	<b>0.00</b>
6,500.0	4.05	180.21	6,403.1	-1,542.59	261.0	-926.7	-135.1	8.01	8.01	0.00
6,600.0	12.05	180.21	6,502.0	-1,641.53	247.0	-926.8	-121.2	8.00	8.00	0.00
6,700.0	20.05	180.21	6,598.0	-1,737.55	219.4	-926.9	-93.8	8.00	8.00	0.00
<b>SHARON SPRINGS</b>										
<b>6,781.1</b>	<b>26.54</b>	<b>180.21</b>	<b>6,672.5</b>	<b>-1,812.00</b>	<b>187.3</b>	<b>-927.0</b>	<b>-62.1</b>	<b>8.00</b>	<b>8.00</b>	<b>0.00</b>
6,800.0	28.05	180.21	6,689.3	-1,828.79	178.7	-927.0	-53.5	8.00	8.00	0.00
6,900.0	36.05	180.21	6,774.0	-1,913.48	125.6	-927.2	-0.9	8.00	8.00	0.00
<b>NIOBRARA A</b>										
<b>6,995.9</b>	<b>43.72</b>	<b>180.21</b>	<b>6,847.5</b>	<b>-1,987.00</b>	<b>64.2</b>	<b>-927.4</b>	<b>60.0</b>	<b>8.00</b>	<b>8.00</b>	<b>0.00</b>
7,000.0	44.05	180.21	6,850.5	-1,989.97	61.4	-927.4	62.9	8.00	8.00	0.00
7,100.0	52.05	180.21	6,917.3	-2,056.76	-13.0	-927.7	136.6	8.00	8.00	0.00
<b>NIOBRARA B</b>										
<b>7,108.6</b>	<b>52.74</b>	<b>180.21</b>	<b>6,922.5</b>	<b>-2,062.00</b>	<b>-19.8</b>	<b>-927.7</b>	<b>143.3</b>	<b>8.00</b>	<b>8.00</b>	<b>0.00</b>
7,200.0	60.05	180.21	6,973.1	-2,112.56	-95.8	-928.0	218.7	8.00	8.00	0.00
<b>NIOBRARA C</b>										
<b>7,241.0</b>	<b>63.33</b>	<b>180.21</b>	<b>6,992.5</b>	<b>-2,132.00</b>	<b>-131.9</b>	<b>-928.1</b>	<b>254.5</b>	<b>8.00</b>	<b>8.00</b>	<b>0.00</b>
7,300.0	68.05	180.21	7,016.8	-2,156.28	-185.7	-928.3	307.8	8.00	8.00	0.00
7,400.0	76.05	180.21	7,047.6	-2,187.08	-280.7	-928.7	402.1	8.00	8.00	0.00
7,500.0	84.05	180.21	7,064.8	-2,204.34	-379.2	-929.1	499.7	8.00	8.00	0.00
<b>7" ICP *NEW* - HONEBEIN 7G-323 (P2)</b>										
<b>7,578.9</b>	<b>90.36</b>	<b>180.21</b>	<b>7,068.7</b>	<b>-2,208.18</b>	<b>-457.9</b>	<b>-929.3</b>	<b>577.8</b>	<b>8.00</b>	<b>8.00</b>	<b>0.00</b>
7,600.0	90.36	180.21	7,068.6	-2,208.05	-479.0	-929.4	598.7	0.00	0.00	0.00
7,700.0	90.36	180.21	7,067.9	-2,207.42	-579.0	-929.8	697.8	0.00	0.00	0.00
7,800.0	90.36	180.21	7,067.3	-2,206.79	-679.0	-930.2	797.0	0.00	0.00	0.00
7,900.0	90.36	180.21	7,066.7	-2,206.17	-779.0	-930.5	896.1	0.00	0.00	0.00
8,000.0	90.36	180.21	7,066.0	-2,205.54	-879.0	-930.9	995.3	0.00	0.00	0.00
8,100.0	90.36	180.21	7,065.4	-2,204.91	-979.0	-931.3	1,094.4	0.00	0.00	0.00

# Planning Report



<b>Database:</b>	EDM 5000.1 Single User Db	<b>Local Co-ordinate Reference:</b>	Well HONEBEIN 7G-323
<b>Company:</b>	PDC ENERGY	<b>TVD Reference:</b>	KB-EST @ 4860.5usft (Original Well Elev)
<b>Project:</b>	WELD COUNTY, COLORADO	<b>MD Reference:</b>	KB-EST @ 4860.5usft (Original Well Elev)
<b>Site:</b>	NE SW SEC. 7 T4N R64W 6th P.M.	<b>North Reference:</b>	True
<b>Well:</b>	HONEBEIN 7G-323	<b>Survey Calculation Method:</b>	Minimum Curvature
<b>Wellbore:</b>	ORIGINAL WELLBORE		
<b>Design:</b>	PROPOSAL #2		

Planned Survey										
MD (usft)	Inc (°)	Azi (°)	TVD (usft)	SS (usft)	+N/-S (usft)	+E/-W (usft)	Vertical Section (usft)	Dogleg Rate (°/100usft)	Build Rate (°/100usft)	Turn Rate (°/100usft)
8,200.0	90.36	180.21	7,064.8	-2,204.28	-1,079.0	-931.6	1,193.6	0.00	0.00	0.00
8,300.0	90.36	180.21	7,064.2	-2,203.65	-1,179.0	-932.0	1,292.8	0.00	0.00	0.00
8,400.0	90.36	180.21	7,063.5	-2,203.02	-1,279.0	-932.4	1,391.9	0.00	0.00	0.00
8,500.0	90.36	180.21	7,062.9	-2,202.40	-1,379.0	-932.7	1,491.1	0.00	0.00	0.00
8,600.0	90.36	180.21	7,062.3	-2,201.77	-1,479.0	-933.1	1,590.2	0.00	0.00	0.00
8,700.0	90.36	180.21	7,061.6	-2,201.14	-1,579.0	-933.5	1,689.4	0.00	0.00	0.00
8,800.0	90.36	180.21	7,061.0	-2,200.51	-1,679.0	-933.8	1,788.5	0.00	0.00	0.00
8,900.0	90.36	180.21	7,060.4	-2,199.88	-1,779.0	-934.2	1,887.7	0.00	0.00	0.00
9,000.0	90.36	180.21	7,059.8	-2,199.25	-1,879.0	-934.6	1,986.8	0.00	0.00	0.00
9,100.0	90.36	180.21	7,059.1	-2,198.62	-1,979.0	-934.9	2,086.0	0.00	0.00	0.00
9,200.0	90.36	180.21	7,058.5	-2,198.00	-2,079.0	-935.3	2,185.1	0.00	0.00	0.00
9,300.0	90.36	180.21	7,057.9	-2,197.37	-2,179.0	-935.7	2,284.3	0.00	0.00	0.00
9,400.0	90.36	180.21	7,057.2	-2,196.74	-2,279.0	-936.0	2,383.4	0.00	0.00	0.00
9,500.0	90.36	180.21	7,056.6	-2,196.11	-2,379.0	-936.4	2,482.6	0.00	0.00	0.00
9,600.0	90.36	180.21	7,056.0	-2,195.48	-2,479.0	-936.8	2,581.7	0.00	0.00	0.00
9,700.0	90.36	180.21	7,055.4	-2,194.85	-2,579.0	-937.1	2,680.9	0.00	0.00	0.00
9,800.0	90.36	180.21	7,054.7	-2,194.23	-2,679.0	-937.5	2,780.1	0.00	0.00	0.00
9,900.0	90.36	180.21	7,054.1	-2,193.60	-2,779.0	-937.9	2,879.2	0.00	0.00	0.00
10,000.0	90.36	180.21	7,053.5	-2,192.97	-2,879.0	-938.2	2,978.4	0.00	0.00	0.00
10,100.0	90.36	180.21	7,052.8	-2,192.34	-2,979.0	-938.6	3,077.5	0.00	0.00	0.00
10,200.0	90.36	180.21	7,052.2	-2,191.71	-3,079.0	-939.0	3,176.7	0.00	0.00	0.00
10,300.0	90.36	180.21	7,051.6	-2,191.08	-3,179.0	-939.4	3,275.8	0.00	0.00	0.00
10,400.0	90.36	180.21	7,051.0	-2,190.45	-3,279.0	-939.7	3,375.0	0.00	0.00	0.00
10,500.0	90.36	180.21	7,050.3	-2,189.83	-3,378.9	-940.1	3,474.1	0.00	0.00	0.00
10,600.0	90.36	180.21	7,049.7	-2,189.20	-3,478.9	-940.5	3,573.3	0.00	0.00	0.00
10,700.0	90.36	180.21	7,049.1	-2,188.57	-3,578.9	-940.8	3,672.4	0.00	0.00	0.00
10,800.0	90.36	180.21	7,048.4	-2,187.94	-3,678.9	-941.2	3,771.6	0.00	0.00	0.00
10,900.0	90.36	180.21	7,047.8	-2,187.31	-3,778.9	-941.6	3,870.7	0.00	0.00	0.00
11,000.0	90.36	180.21	7,047.2	-2,186.68	-3,878.9	-941.9	3,969.9	0.00	0.00	0.00
11,100.0	90.36	180.21	7,046.6	-2,186.05	-3,978.9	-942.3	4,069.1	0.00	0.00	0.00
11,200.0	90.36	180.21	7,045.9	-2,185.43	-4,078.9	-942.7	4,168.2	0.00	0.00	0.00
11,300.0	90.36	180.21	7,045.3	-2,184.80	-4,178.9	-943.0	4,267.4	0.00	0.00	0.00
11,400.0	90.36	180.21	7,044.7	-2,184.17	-4,278.9	-943.4	4,366.5	0.00	0.00	0.00
11,500.0	90.36	180.21	7,044.0	-2,183.54	-4,378.9	-943.8	4,465.7	0.00	0.00	0.00
11,600.0	90.36	180.21	7,043.4	-2,182.91	-4,478.9	-944.2	4,564.8	0.00	0.00	0.00
11,700.0	90.36	180.21	7,042.8	-2,182.28	-4,578.9	-944.5	4,664.0	0.00	0.00	0.00
11,800.0	90.36	180.21	7,042.2	-2,181.65	-4,678.9	-944.9	4,763.1	0.00	0.00	0.00
11,900.0	90.36	180.21	7,041.5	-2,181.03	-4,778.9	-945.3	4,862.3	0.00	0.00	0.00
12,000.0	90.36	180.21	7,040.9	-2,180.40	-4,878.9	-945.6	4,961.4	0.00	0.00	0.00
12,100.0	90.36	180.21	7,040.3	-2,179.77	-4,978.9	-946.0	5,060.6	0.00	0.00	0.00
12,200.0	90.36	180.21	7,039.6	-2,179.14	-5,078.9	-946.4	5,159.7	0.00	0.00	0.00
12,300.0	90.36	180.21	7,039.0	-2,178.51	-5,178.9	-946.8	5,258.9	0.00	0.00	0.00
12,400.0	90.36	180.21	7,038.4	-2,177.88	-5,278.9	-947.1	5,358.1	0.00	0.00	0.00
12,500.0	90.36	180.21	7,037.8	-2,177.25	-5,378.9	-947.5	5,457.2	0.00	0.00	0.00
12,600.0	90.36	180.21	7,037.1	-2,176.63	-5,478.9	-947.9	5,556.4	0.00	0.00	0.00
12,700.0	90.36	180.21	7,036.5	-2,176.00	-5,578.9	-948.2	5,655.5	0.00	0.00	0.00
12,800.0	90.36	180.21	7,035.9	-2,175.37	-5,678.9	-948.6	5,754.7	0.00	0.00	0.00
12,900.0	90.36	180.21	7,035.2	-2,174.74	-5,778.9	-949.0	5,853.8	0.00	0.00	0.00
13,000.0	90.36	180.21	7,034.6	-2,174.11	-5,878.9	-949.4	5,953.0	0.00	0.00	0.00
13,100.0	90.36	180.21	7,034.0	-2,173.48	-5,978.9	-949.7	6,052.1	0.00	0.00	0.00
13,200.0	90.36	180.21	7,033.4	-2,172.85	-6,078.9	-950.1	6,151.3	0.00	0.00	0.00
13,300.0	90.36	180.21	7,032.7	-2,172.22	-6,178.9	-950.5	6,250.4	0.00	0.00	0.00
13,400.0	90.36	180.21	7,032.1	-2,171.60	-6,278.9	-950.8	6,349.6	0.00	0.00	0.00
13,500.0	90.36	180.21	7,031.5	-2,170.97	-6,378.9	-951.2	6,448.7	0.00	0.00	0.00

# Planning Report



<b>Database:</b>	EDM 5000.1 Single User Db	<b>Local Co-ordinate Reference:</b>	Well HONEBEIN 7G-323
<b>Company:</b>	PDC ENERGY	<b>TVD Reference:</b>	KB-EST @ 4860.5usft (Original Well Elev)
<b>Project:</b>	WELD COUNTY, COLORADO	<b>MD Reference:</b>	KB-EST @ 4860.5usft (Original Well Elev)
<b>Site:</b>	NE SW SEC. 7 T4N R64W 6th P.M.	<b>North Reference:</b>	True
<b>Well:</b>	HONEBEIN 7G-323	<b>Survey Calculation Method:</b>	Minimum Curvature
<b>Wellbore:</b>	ORIGINAL WELLBORE		
<b>Design:</b>	PROPOSAL #2		

Planned Survey										
MD (usft)	Inc (°)	Azi (°)	TVD (usft)	SS (usft)	+N/-S (usft)	+E/-W (usft)	Vertical Section (usft)	Dogleg Rate (°/100usft)	Build Rate (°/100usft)	Turn Rate (°/100usft)
13,600.0	90.36	180.21	7,030.8	-2,170.34	-6,478.9	-951.6	6,547.9	0.00	0.00	0.00
13,700.0	90.36	180.21	7,030.2	-2,169.71	-6,578.9	-952.0	6,647.1	0.00	0.00	0.00
13,800.0	90.36	180.21	7,029.6	-2,169.08	-6,678.9	-952.3	6,746.2	0.00	0.00	0.00
13,900.0	90.36	180.21	7,029.0	-2,168.45	-6,778.9	-952.7	6,845.4	0.00	0.00	0.00
14,000.0	90.36	180.21	7,028.3	-2,167.82	-6,878.9	-953.1	6,944.5	0.00	0.00	0.00
14,100.0	90.36	180.21	7,027.7	-2,167.19	-6,978.9	-953.4	7,043.7	0.00	0.00	0.00
14,200.0	90.36	180.21	7,027.1	-2,166.57	-7,078.9	-953.8	7,142.8	0.00	0.00	0.00
<b>BHL - HONEBEIN 7G-323 (P2)</b>										
<b>14,210.5</b>	<b>90.36</b>	<b>180.21</b>	<b>7,027.0</b>	<b>-2,166.50</b>	<b>-7,089.4</b>	<b>-953.9</b>	<b>7,153.2</b>	<b>0.00</b>	<b>0.00</b>	<b>0.00</b>

Formations						
MD (usft)	TVD (usft)	Name	Lithology	Dip (°)	Dip Direction (°)	
3,772.2	3,722.5	PARKMAN		0.00		
4,514.4	4,448.5	SUSSEX		0.00		
5,322.1	5,238.5	SHANNON		0.00		
6,781.1	6,672.5	SHARON SPRINGS		0.00		
6,995.9	6,847.5	NIOBRARA A		0.00		
7,108.6	6,922.5	NIOBRARA B		0.00		
7,241.0	6,992.5	NIOBRARA C		0.00		

Plan Annotations				
MD (usft)	TVD (usft)	Local Coordinates		Comment
		+N/-S (usft)	+E/-W (usft)	
1,100.0	1,100.0	0.0	0.0	START NUDGE (2°/100ft BUR)
1,700.2	1,695.8	17.1	-60.3	EOB TO 12° INC
5,729.2	5,636.7	245.7	-866.4	END OF TANGENT
6,329.4	6,232.5	262.8	-926.7	EOD TO VERTICAL
6,449.4	6,352.5	262.8	-926.7	KOP (8°/100ft BUR)
7,578.9	7,068.7	-457.9	-929.3	7" ICP *NEW* - HONEBEIN 7G-323 (P2)
14,210.5	7,027.0	-7,089.4	-953.9	BHL - HONEBEIN 7G-323 (P2)