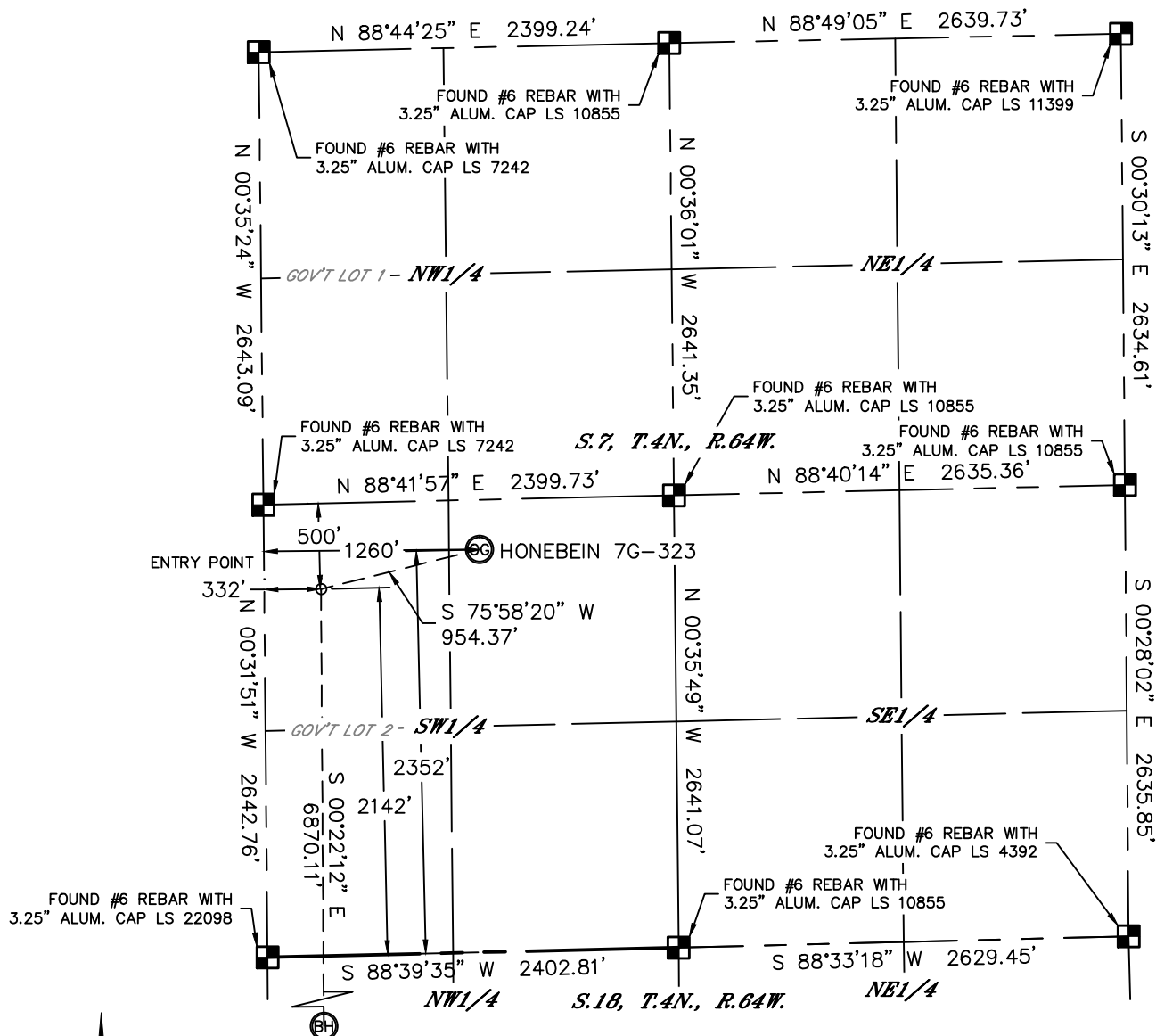


Lat40°, Inc. 1635 Foxtrail Drive, Suite 325 Loveland, CO 970-776-3321

WELL LOCATION CERTIFICATE

THIS MAP DOES NOT REPRESENT A BOUNDARY SURVEY

SECTION: 7
TOWNSHIP: 4N
RANGE: 64W



In accordance with a request from Mac Neumann with PDC ENERGY

Lat40°, Inc. has determined the surface location of the HONEBEIN 7G-323 to be 2352' from the SOUTH line and 1260' from the WEST line as measured at right angles from the section lines of Section 7, Township 4 North, Range 64 West and the bottom hole to be 500' from the SOUTH line and 332' from the WEST line as measured at right angles from the section lines of Section 18, Township 4 North, Range 64 West of the Sixth Principal Meridian, County of Weld, State of Colorado.

I hereby state that this Well Location Certificate was prepared by me, or under my direct supervision, that the fieldwork was completed on 7/3/2014, for and on behalf of PDC ENERGY. That this is not a Land Survey Plat or an Improvement Survey Plat, and that it is not to be relied upon for establishment of fence, building, or other future improvement lines.

SURFACE LOCATION

LAT: 40.32593°N
LONG: 104.59752°W
PDOP: 1.3
ELEV: 4847'
1/4,1/4: NESW



BOTTOM HOLE

LAT: 40.30647°N
LONG: 104.60094°W



ENTRY POINT

LAT: 40.32532°N
LONG: 104.60085°W

NOTE:

- 1) Bearings shown are Grid Bearings of the Colorado State Plane Coordinate System, North Zone, North American Datum 1983. The lineal dimensions as contained herein are based upon the "U.S. Survey Foot."
- 2) Ground elevations are based on an observed GPS elevation (NAVD 1988 DATUM).
- 3) IMPROVEMENTS: See LOCATION DRAWING for all visible improvements within 500' of disturbed area.
- 4) SURFACE USE: PASTURE
- 5) INSTRUMENT OPERATOR: BRIAN ROTTINGHAUS
- 6) NEAREST CULTURAL ITEMS:
- BUILDING: $\pm 728'$ NW
- BUILDING UNIT: $\pm 849'$ SE
- HIGH OCCUPANCY BUILDING UNIT: 5280'+
- DESIGNATED OUTSIDE ACTIVITY AREA: 5280'+
- PUBLIC ROAD: (CR 49) 1240' W
- ABOVEGROUND UTILITY: $\pm 908'$ N
- RAILROAD: 5280'+
- PROPERTY LINE: 290' N
- LEGEND
-  = ALIQUOT MONUMENT AS DE
-  = CALCULATED POSITION

LEGEND

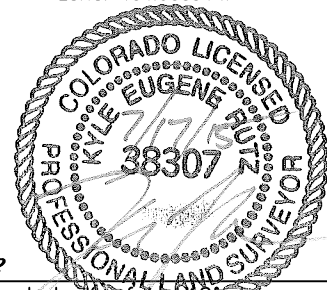
 = ALIQUOT MONUMENT AS DESCRIBED
 = CALCULATED POSITION

SHEET 1 OF 2

Kyle E. Rutz—On behalf of Laidlaw, Inc.
Colorado Licensed Professional
Land Surveyor No. 38307

DATE: _____
PROJECT: _____

DATE: 7/17/2015
PROJECT#: 2014120



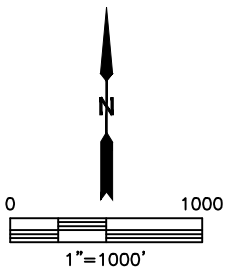
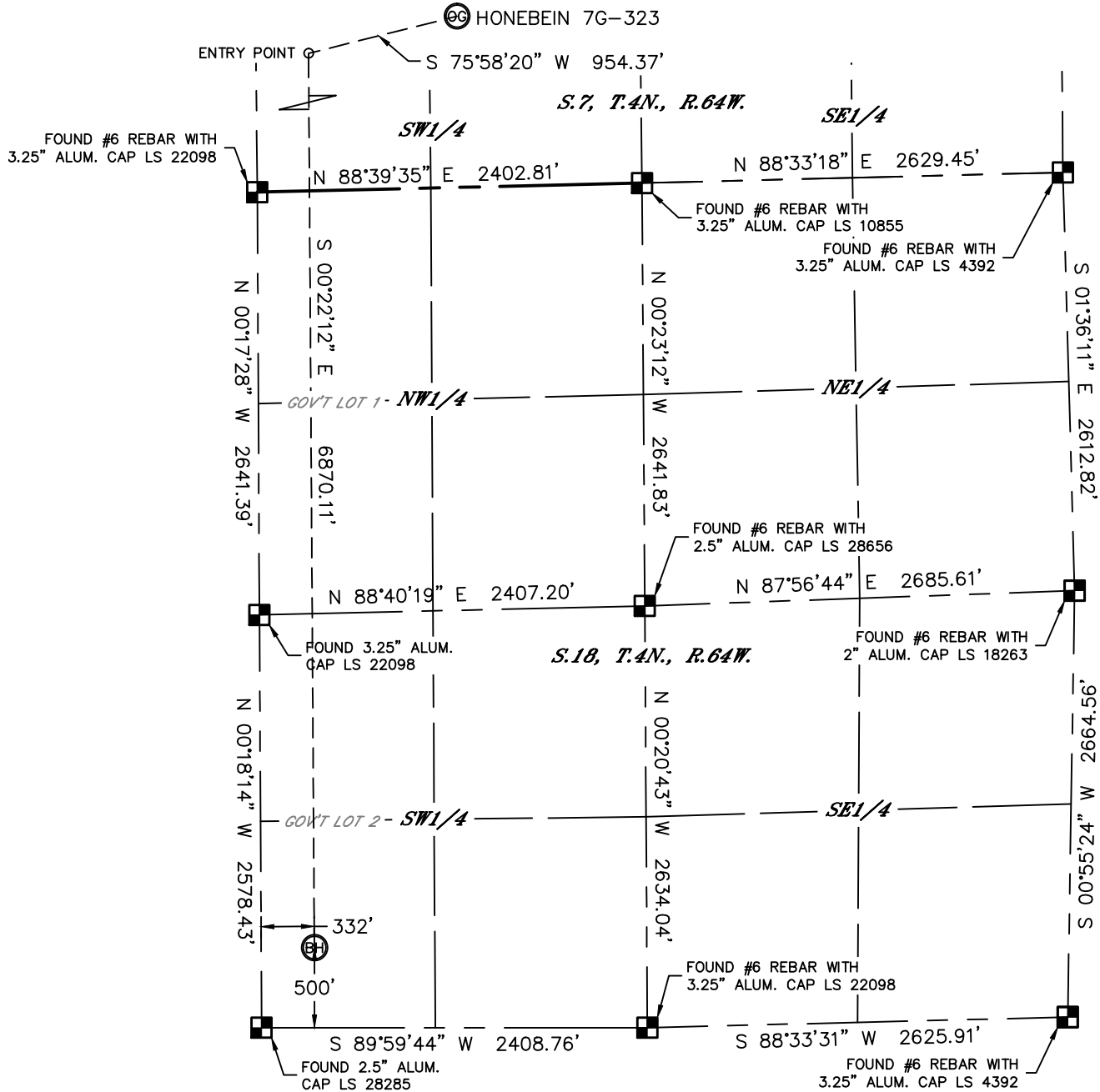


Lat40°, Inc. 1635 Foxtrail Drive, Suite 325 Loveland, CO 970-776-3321

WELL LOCATION CERTIFICATE

THIS MAP DOES NOT REPRESENT A BOUNDARY SURVEY

SECTION: 7
TOWNSHIP: 4N
RANGE: 64W



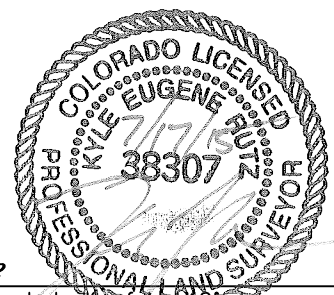
LEGEND

- = ALIQUOT MONUMENT AS DESCRIBED
- = CALCULATED POSITION

SHEET 2 OF 2

Kyle E. Rutz—On behalf of Lat40°, Inc.
Colorado Licensed Professional
Land Surveyor No. 38307

DATE: 7/17/2015
PROJECT#: 2014120



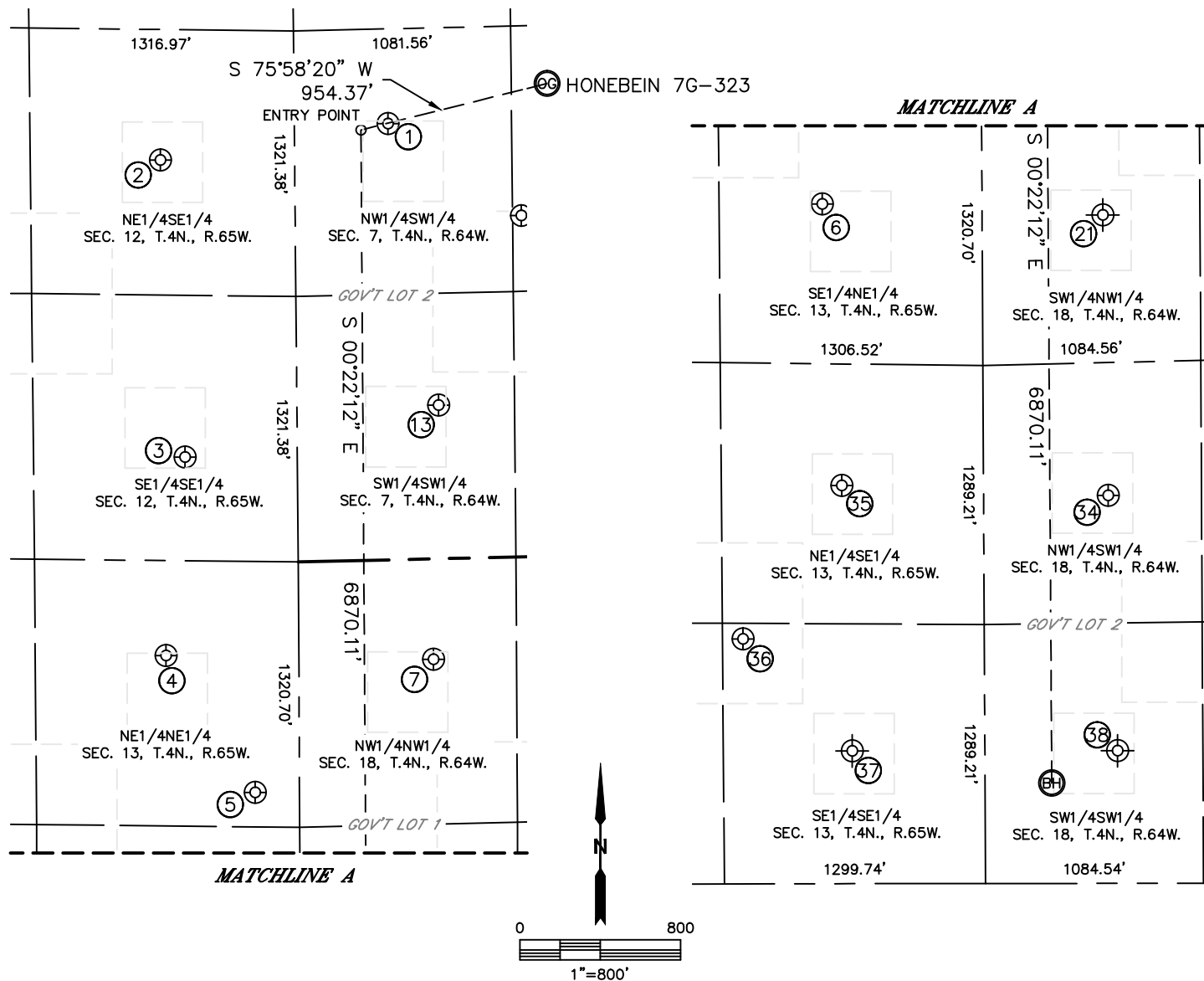


Lat40°, Inc. 1635 Foxtrail Drive, Suite 325 Loveland, CO 970-776-3321

SITE SKETCH

HONEBEIN 7G-323

SECTION: 7
TOWNSHIP: 4N
RANGE: 64W



WELL NO.	WELL NAME	SHL FOOTAGE			SHL LAT°	SHL LONG°	PDOP	ELEV (FT.)	1/4/1/4	
1	HONEBEIN 13-7U	2170	FSL	467	FWL	40.32540	-104.60037	1.9	4839	NWSW
2	SALLEE 1	1993	FSL	669	FEL	40.32494	-104.60444	1.8	4818	NESE
3	SALLEE 2	516	FSL	559	FEL	40.32088	-104.60405	1.6	4807	SESE
4	FRED ARENS 4	473	FNL	662	FEL	40.31817	-104.60443	1.6	4790	NENE
5	HOW SAD C 18-31	1149	FNL	220	FEL	40.31629	-104.60286	1.6	4792	NENE
6	FRY 13-2	1846	FNL	795	FEL	40.31441	-104.60493	1.8	4780	SENE
7	FRY PM C 18-4	500	FNL	670	FWL	40.31808	-104.59965	1.7	4813	NWNW
13	LATHAM 7-3	764	FSL	706	FWL	40.32155	-104.59952	1.6	4835	SWSW
21	FRY 18-1	1906	FNL	600	FWL	40.31434	-104.59988	NA	4795	SWNW
34	FARR 18-12	1931	FSL	620	FWL	40.31039	-104.59989	1.8	4818	NWSW
35	HUNTSMAN G 13-9	1981	FSL	705	FEL	40.31056	-104.60463	2.3	4814	NESE
36	TIMMERMAN 20-13	1218	FSL	1201	FEL	40.30847	-104.60643	1.9	4813	SESE
37	HUNTSMAN G 13-16	600	FSL	600	FEL	40.30693	-104.60448	NA	4819	SESE
38	FARR 1	660	FSL	660	FWL	40.30688	-104.59974	NA	4840	SWSW

NOTE: THE ABANDONED WELL DATA SHOWN IN RED ABOVE WAS OBTAINED FROM COGCC SCOUT CARDS.

DATE: 7/21/2015
PROJECT#: 2014120