



# Kerr-McGee Oil & Gas Onshore LP

A subsidiary of Anadarko Petroleum Corporation

1099 18<sup>th</sup> Street  
Denver, CO 80202  
720-929-6000

June 29, 2015

Matt Lepore  
Director, Colorado Oil and Gas Conservation Commission  
Department of Natural Resources  
The Chancery Building  
1120 Lincoln Street, Suite 801  
Denver, CO 80203

Re: **30 Day Certification Letter - 318A.e**  
COOK 26G-16HZ (Doc No. 400849760)  
Township 2 North, Range 65 West  
Section 16: SESE  
Unit Acreage: 480 acres  
Unit Spacing: 02N-65W-Sec 9 SESE  
02N-65W-Sec 10 SWSW  
02N-65W-Sec 15 W2W2  
02N-65W-Sec 16 E2E2  
02N-65W-Sec 21 NENE  
02N-65W-Sec 22 NWNW  
Weld County, Colorado

Dear Director Lepore:

Kerr McGee Oil and Gas Onshore LP ("KMG") hereby certifies that KMG owns one hundred percent (100%) of the leasehold interest in the mineral rights in the proposed spacing unit. KMG hereby respectfully requests approval of this boundary well.

If you have any questions or issues regarding this permit, please contact our office.

Sincerely,

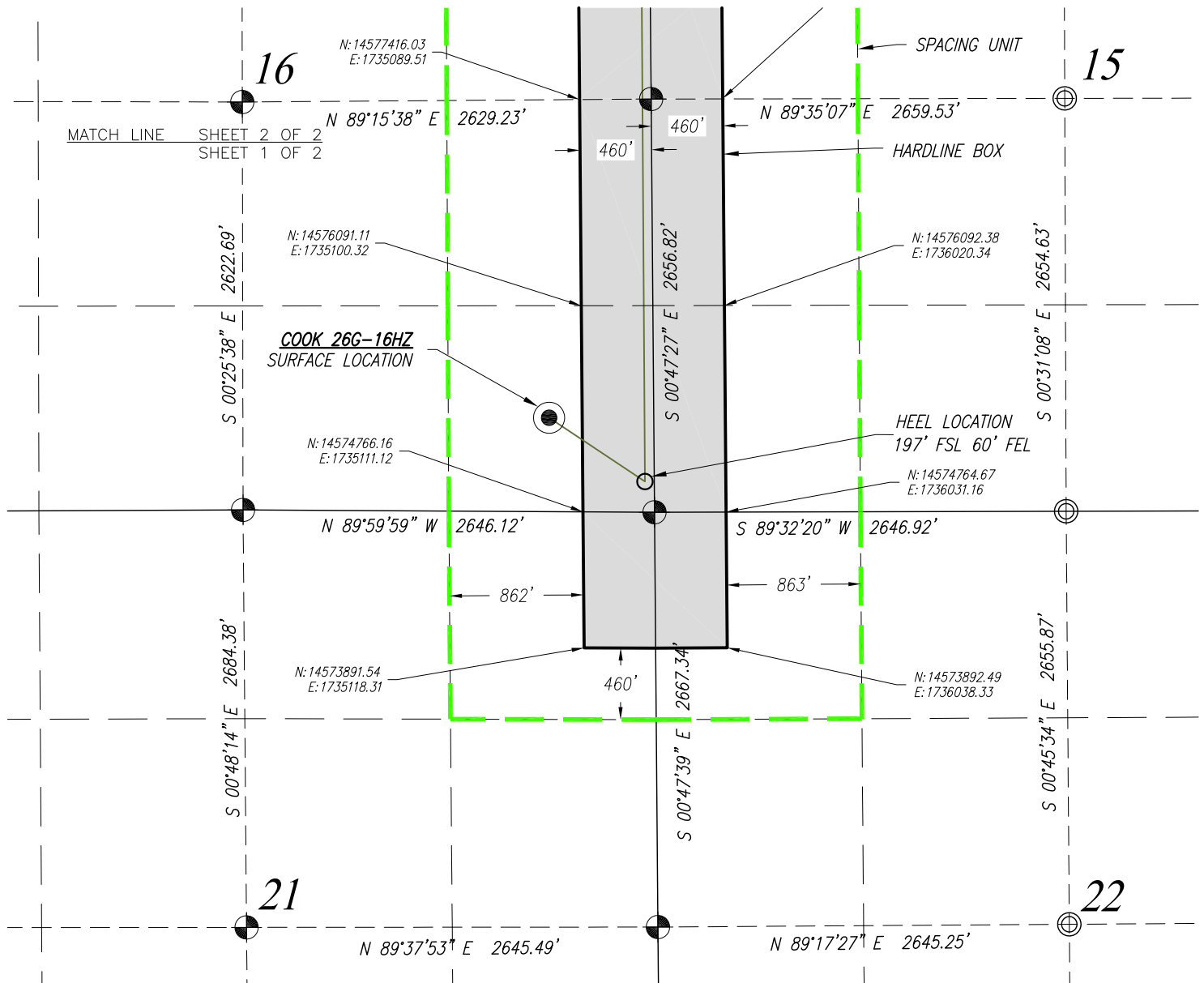
**Kerr-McGee Oil and Gas Onshore LP**

A handwritten signature in blue ink that reads 'RPowers'.

Ronett Powers  
Regulatory Analyst II

Enclosure

# TOWNSHIP 2 NORTH, RANGE 65 WEST, 6TH P.M.



HEEL LOCATION  
N: 14,574,960.68'  
E: 1,735,509.55'

LATITUDE= 40.131940°  
LONGITUDE= -104.659789°

LATITUDE= 40°07'54.986"  
LONGITUDE= -104°39'35.240"

BOTTOM HOLE LOCATION  
N: 14,579,893.77'  
E: 1,735,475.29'

LATITUDE= 40.145487°  
LONGITUDE= -104.659844°

LATITUDE= 40°08'43.753"  
LONGITUDE= -104°39'35.438"

## NOTES:

1. Found Section Corner
2. Calculated Section Corner
3. Basis of Bearings: Colorado coordinate system 1983 north zone ('GRID')
4. Basis of Distances: GRID; Combined Factor=0.999728637
5. Basis of coordinates: UTM ZONE 13 NAD 83

PREPARED FOR:

**Kerr-McGee Oil &  
Gas Onshore L.P.**  
1099 18th Street  
Denver, Colorado 80202

**Acklam, Inc.**

DATE SURVEYED: 12/15/2014

DATE DRAFTED: 04/14/2015

DRAFTED BY: FWM CHK BY: MAH

JOB No. 14506

REVISED: 4/24/2015

## SPACING UNIT EXHIBIT

### COOK 26G-16HZ

SURFACE 604' FSL 673' FEL SEC. 16  
GROUND ELEVATION=4879.0'

HEEL 197' FSL 60' FEL SEC. 16  
BOTTOM 181' FNL 54' FEL SEC. 16

SE1/4 SE1/4  
SECTION 16, T2N, R65W, 6TH PM  
WELD COUNTY, COLORADO

0' 1000'  
  
SCALE: 1"=1000'



NOTICE: According to Colorado law you must commence any legal action based upon any defect in this survey within three years after you first discover such defect. In no event may any action based upon any defect in this survey be commenced more than ten years from the date of the certification shown hereon.

SHEET 1 OF 2

9

10

15

16

N 89°26'01" E 2628.12'

N 89°23'16" E 2647.94'

S 00°17'02" W 2631.64'

N 89°21'50" E 2613.01'

N 89°38'06" E 2671.98'

S 00°26'16" E 2661.46'

S 00°47'14" E 2656.72'

N 89°15'38" E 2629.23'

N 89°35'07" E 2659.53'

N: 14580926.53  
E: 1735081.89

N: 14580930.09  
E: 1736002.07

N: 14580072.56  
E: 1735068.02

N: 14580075.40  
E: 1735988.08

N: 14578744.29  
E: 1735078.77

N: 14578747.75  
E: 1735998.77

N: 14577416.03  
E: 1735089.51

N: 14577423.12  
E: 1736009.49

460'

460'

460'

848'

874'

460'

460'

460'

SPACING UNIT

HARDLINE BOX

BOTTOM HOLE LOCATION  
181 FNL 54 FEL

MATCH LINE

SHEET 2 OF 2

SHEET 1 OF 2

*SHEET 2 OF 2*