

Location:	COLORADO	Slot:	SLOT#04 WESTWIND 4 (1046'FSL & 252'FWL,SEC.07)
Field:	WELD COUNTY (NAD83/TRUE NORTH)	Well:	WESTWIND 4
Facility:	SEC.07-T06N-R67W	Wellbore:	WESTWIND 4 PWB

Location:	COLORADO	Slot:	SLOT#04 WESTWIND 4 (1046'FSL & 252'FWL,SEC.07)
Field:	WELD COUNTY (NAD83/TRUE NORTH)	Well:	WESTWIND 4
Facility:	SEC.07-T06N-R67W	Wellbore:	WESTWIND 4 PWB

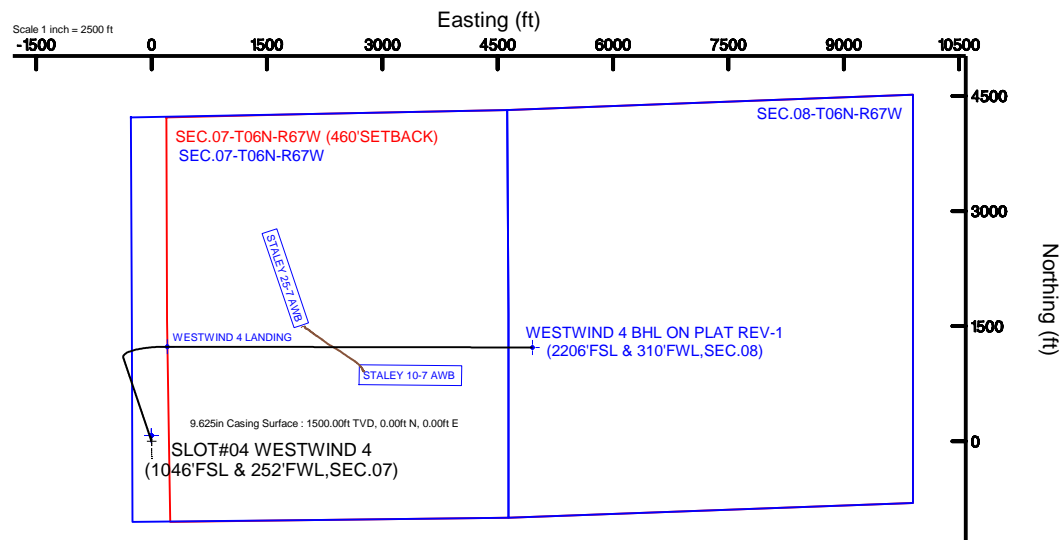
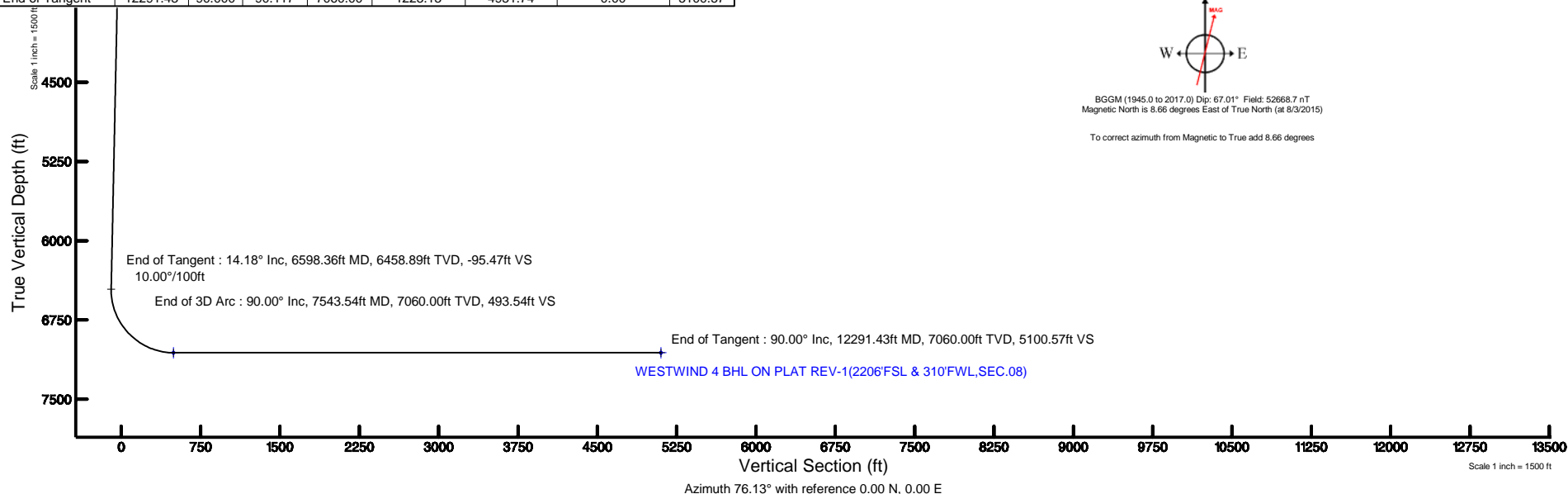
True vertical depths are referenced to SAVANNA 802 (20XB) (RKB)	Grid System: NAD83 / Lambert Colorado SP, Northern Zone (501), US feet
Measured depths are referenced to SAVANNA 802 (20XB) (RKB)	North Reference: True north
SAVANNA 802 (20XB) (RKB) to Mean Sea Level: 4839 feet	Scale: True distance
Mean Sea Level to Mud line (At Slot: SLOT#04 WESTWIND 4 (1046FSL & 252FWL,SEC.07)): 0 feet	Depths are in feet
Coordinates are in feet referenced to Slot	Created by: ingmjmr on 8/6/2015

Facility Name			Grid East (US ft)	Grid North (US ft)	Latitude	Longitude
SEC.07-T06N-R67W			3154839.470	1424332.263	40°29'48.692"N	104°56'35.682"W
Slot	Local N (ft)	Local E (ft)	Grid East (US ft)	Grid North (US ft)	Latitude	Longitude
SLOT#04 WESTWIND 4 (1046FSL & 252FWL,SEC.07)	-74.99	1.39	3154841.331	1424257.287	40°29'47.951"N	104°56'35.664"W
SAVANNA 802 (20KB) (RKB) to Mud line (At Slot: SLOT#04 WESTWIND 4 (1046FSL & 252FWL,SEC.07))					4839ft	
Mean Sea Level to Mud line (At Slot: SLOT#04 WESTWIND 4 (1046FSL & 252FWL,SEC.07))					0ft	
SAVANNA 802 (20KB) (RKB) to Mean Sea Level					4839ft	

Name	MD (ft)	TVD (ft)	Local N (ft)	Local E (ft)	Grid East (US ft)	Grid North (US ft)	Latitude	Longitude
SEC 07-T06N-R67W	-4.00	75.03	-1.39	3154839.47	1424332.30	40°29'48.692"N	104°56'35.682"W	
SEC 08-T06N-R67W	-4.00	75.03	-1.39	3154839.47	1424332.30	40°29'48.692"N	104°56'35.682"W	
SEC 07-T08N-R67W (460°SETBACK)		7060.00	74.99	-1.39	3154839.47	1424332.26	40°29'48.692"N	104°56'35.682"W
WESTWIND 4 BHL ON PLAT REV-1 (2206TSL & 3101FWL SEC 08)	12291.43	7060.00	1223.13	495.74	3198782.12	1425511.44	40°30'00.032"N	104°50'13.566"W
WESTWIND 4 LANDING	754.54	7060.00	1223.63	2081.85	3155097.43	1425491.33	40°30'00.137"N	104°56'13.026"W

Start MD (ft)	End MD (ft)	Tool	Model	Log Name/Comment	Wellbore
20.00	12291.43	NaviTrak	NaviTrak (Standard)		WESTWIND 4 PWB

Design Comment	MD (ft)	Inc (°)	Az (°)	TVD (ft)	Local N (ft)	Local E (ft)	DLS (°/100ft)	VS (ft)
Tie On	20.00	0.000	341.365	20.00	0.00	0.00	0.00	0.00
End of Tangent	1550.00	0.000	341.365	1550.00	0.00	0.00	0.00	0.00
End of Build	2259.12	14.182	341.365	2251.90	82.74	-27.90	2.00	-7.25
End of Tangent	6598.36	14.182	341.365	6458.89	1090.16	-367.62	0.00	-95.47
End of 3D Arc	7543.54	90.000	90.117	7060.00	1232.83	203.85	10.00	493.54
End of Tangent	12291.43	90.000	90.117	7060.00	1223.13	4951.74	0.00	5100.57



BGGM (1945.0 to 2017.0) Dip: 67.01° Field: 52668.7 nT
Magnetic North is 8.66 degrees East of True North (at 8/3/2015)

To correct azimuth from Magnetic to True add 8.66 degrees



Planned Wellpath Report

WESTWIND 4 PWP (REV-B.0)

Page 1 of 8



REFERENCE WELLPATH IDENTIFICATION

Operator	EXTRACTION OIL & GAS	Slot	SLOT#04 WESTWIND 4 (1046'FSL & 252'FWL,SEC.07)
Area	COLORADO	Well	WESTWIND 4
Field	WELD COUNTY (NAD83/TRUE NORTH)	Wellbore	WESTWIND 4 PWB
Facility	SEC.07-T06N-R67W		

REPORT SETUP INFORMATION

Projection System	NAD83 / Lambert Colorado SP, Northern Zone (501), US feet	Software System	WellArchitect® 4.1.1
North Reference	True	User	Ingmjmr
Scale	0.999966	Report Generated	8/6/2015 at 3:40:40 PM
Convergence at slot	0.36° East	Database/Source file	Denver/WESTWIND_4_PWB.xml

WELLPATH LOCATION

	Local coordinates		Grid coordinates		Geographic coordinates	
	North[ft]	East[ft]	Easting[US ft]	Northing[US ft]	Latitude	Longitude
Slot Location	-74.99	1.39	3154841.33	1424257.29	40°29'47.951"N	104°56'35.664"W
Facility Reference Pt			3154839.47	1424332.26	40°29'48.692"N	104°56'35.682"W
Field Reference Pt			3185481.27	1419166.81	40°28'55.560"N	104°49'59.556"W

WELLPATH DATUM

Calculation method	Minimum curvature	SAVANNA 802 (20'KB) (RKB) to Facility Vertical Datum	4839.00ft
Horizontal Reference Pt	Slot	SAVANNA 802 (20'KB) (RKB) to Mean Sea Level	4839.00ft
Vertical Reference Pt	SAVANNA 802 (20'KB) (RKB)	SAVANNA 802 (20'KB) (RKB) to Mud Line at Slot (SLOT#04 WESTWIND 4 (1046'FSL & 252'FWL,SEC.07))	4839.00ft
MD Reference Pt	SAVANNA 802 (20'KB) (RKB)	Section Origin	N 0.00, E 0.00 ft
Field Vertical Reference	Mean Sea Level	Section Azimuth	76.13°



Planned Wellpath Report

WESTWIND 4 PWP (REV-B.0)

Page 2 of 8



REFERENCE WELLPATH IDENTIFICATION

Operator	EXTRACTION OIL & GAS	Slot	SLOT#04 WESTWIND 4 (1046'FSL & 252'FWL,SEC.07)
Area	COLORADO	Well	WESTWIND 4
Field	WELD COUNTY (NAD83/TRUE NORTH)	Wellbore	WESTWIND 4 PWB
Facility	SEC.07-T06N-R67W		

WELLPATH DATA (129 stations) † = interpolated/extrapolated station

MD [ft]	Inclination [°]	Azimuth [°]	TVD [ft]	Vert Sect [ft]	North [ft]	East [ft]	DLS [°/100ft]	Comments
0.00†	0.000	341.365	0.00	0.00	0.00	0.00	0.00	
20.00	0.000	341.365	20.00	0.00	0.00	0.00	0.00	Tie On
120.00†	0.000	341.365	120.00	0.00	0.00	0.00	0.00	
220.00†	0.000	341.365	220.00	0.00	0.00	0.00	0.00	
320.00†	0.000	341.365	320.00	0.00	0.00	0.00	0.00	
420.00†	0.000	341.365	420.00	0.00	0.00	0.00	0.00	
520.00†	0.000	341.365	520.00	0.00	0.00	0.00	0.00	
620.00†	0.000	341.365	620.00	0.00	0.00	0.00	0.00	
720.00†	0.000	341.365	720.00	0.00	0.00	0.00	0.00	
820.00†	0.000	341.365	820.00	0.00	0.00	0.00	0.00	
920.00†	0.000	341.365	920.00	0.00	0.00	0.00	0.00	
1020.00†	0.000	341.365	1020.00	0.00	0.00	0.00	0.00	
1120.00†	0.000	341.365	1120.00	0.00	0.00	0.00	0.00	
1220.00†	0.000	341.365	1220.00	0.00	0.00	0.00	0.00	
1320.00†	0.000	341.365	1320.00	0.00	0.00	0.00	0.00	
1420.00†	0.000	341.365	1420.00	0.00	0.00	0.00	0.00	
1520.00†	0.000	341.365	1520.00	0.00	0.00	0.00	0.00	
1550.00	0.000	341.365	1550.00	0.00	0.00	0.00	0.00	End of Tangent
1620.00†	1.400	341.365	1619.99	-0.07	0.81	-0.27	2.00	
1720.00†	3.400	341.365	1719.90	-0.42	4.78	-1.61	2.00	
1820.00†	5.400	341.365	1819.60	-1.06	12.05	-4.06	2.00	
1920.00†	7.400	341.365	1918.97	-1.98	22.61	-7.62	2.00	
2020.00†	9.400	341.365	2017.89	-3.19	36.45	-12.29	2.00	
2120.00†	11.400	341.365	2116.25	-4.69	53.56	-18.06	2.00	
2220.00†	13.400	341.365	2213.91	-6.47	73.90	-24.92	2.00	
2259.12	14.182	341.365	2251.90	-7.25	82.74	-27.90	2.00	End of Build
2320.00†	14.182	341.365	2310.93	-8.48	96.87	-32.67	0.00	
2420.00†	14.182	341.365	2407.88	-10.52	120.09	-40.50	0.00	
2520.00†	14.182	341.365	2504.83	-12.55	143.31	-48.32	0.00	
2620.00†	14.182	341.365	2601.78	-14.58	166.52	-56.15	0.00	



Planned Wellpath Report

WESTWIND 4 PWP (REV-B.0)

Page 3 of 8



REFERENCE WELLPATH IDENTIFICATION

Operator	EXTRACTION OIL & GAS	Slot	SLOT#04 WESTWIND 4 (1046'FSL & 252'FWL,SEC.07)
Area	COLORADO	Well	WESTWIND 4
Field	WELD COUNTY (NAD83/TRUE NORTH)	Wellbore	WESTWIND 4 PWB
Facility	SEC.07-T06N-R67W		

WELLPATH DATA (129 stations) † = interpolated/extrapolated station

MD [ft]	Inclination [°]	Azimuth [°]	TVD [ft]	Vert Sect [ft]	North [ft]	East [ft]	DLS [°/100ft]	Comments
2720.00†	14.182	341.365	2698.73	-16.62	189.74	-63.98	0.00	
2820.00†	14.182	341.365	2795.69	-18.65	212.96	-71.81	0.00	
2920.00†	14.182	341.365	2892.64	-20.68	236.17	-79.64	0.00	
3020.00†	14.182	341.365	2989.59	-22.72	259.39	-87.47	0.00	
3120.00†	14.182	341.365	3086.54	-24.75	282.60	-95.30	0.00	
3220.00†	14.182	341.365	3183.49	-26.78	305.82	-103.13	0.00	
3320.00†	14.182	341.365	3280.45	-28.81	329.04	-110.96	0.00	
3420.00†	14.182	341.365	3377.40	-30.85	352.25	-118.79	0.00	
3520.00†	14.182	341.365	3474.35	-32.88	375.47	-126.61	0.00	
3620.00†	14.182	341.365	3571.30	-34.91	398.69	-134.44	0.00	
3720.00†	14.182	341.365	3668.25	-36.95	421.90	-142.27	0.00	
3820.00†	14.182	341.365	3765.21	-38.98	445.12	-150.10	0.00	
3920.00†	14.182	341.365	3862.16	-41.01	468.34	-157.93	0.00	
4020.00†	14.182	341.365	3959.11	-43.05	491.55	-165.76	0.00	
4120.00†	14.182	341.365	4056.06	-45.08	514.77	-173.59	0.00	
4220.00†	14.182	341.365	4153.01	-47.11	537.99	-181.42	0.00	
4320.00†	14.182	341.365	4249.97	-49.15	561.20	-189.25	0.00	
4420.00†	14.182	341.365	4346.92	-51.18	584.42	-197.07	0.00	
4520.00†	14.182	341.365	4443.87	-53.21	607.64	-204.90	0.00	
4620.00†	14.182	341.365	4540.82	-55.25	630.85	-212.73	0.00	
4720.00†	14.182	341.365	4637.78	-57.28	654.07	-220.56	0.00	
4820.00†	14.182	341.365	4734.73	-59.31	677.28	-228.39	0.00	
4920.00†	14.182	341.365	4831.68	-61.34	700.50	-236.22	0.00	
5020.00†	14.182	341.365	4928.63	-63.38	723.72	-244.05	0.00	
5120.00†	14.182	341.365	5025.58	-65.41	746.93	-251.88	0.00	
5220.00†	14.182	341.365	5122.54	-67.44	770.15	-259.71	0.00	
5320.00†	14.182	341.365	5219.49	-69.48	793.37	-267.53	0.00	
5420.00†	14.182	341.365	5316.44	-71.51	816.58	-275.36	0.00	
5520.00†	14.182	341.365	5413.39	-73.54	839.80	-283.19	0.00	
5620.00†	14.182	341.365	5510.34	-75.58	863.02	-291.02	0.00	



Planned Wellpath Report

WESTWIND 4 PWP (REV-B.0)

Page 4 of 8



REFERENCE WELLPATH IDENTIFICATION

Operator	EXTRACTION OIL & GAS	Slot	SLOT#04 WESTWIND 4 (1046'FSL & 252'FWL,SEC.07)
Area	COLORADO	Well	WESTWIND 4
Field	WELD COUNTY (NAD83/TRUE NORTH)	Wellbore	WESTWIND 4 PWB
Facility	SEC.07-T06N-R67W		

WELLPATH DATA (129 stations) † = interpolated/extrapolated station

MD [ft]	Inclination [°]	Azimuth [°]	TVD [ft]	Vert Sect [ft]	North [ft]	East [ft]	DLS [°/100ft]	Comments
5720.00†	14.182	341.365	5607.30	-77.61	886.23	-298.85	0.00	
5820.00†	14.182	341.365	5704.25	-79.64	909.45	-306.68	0.00	
5920.00†	14.182	341.365	5801.20	-81.68	932.67	-314.51	0.00	
6020.00†	14.182	341.365	5898.15	-83.71	955.88	-322.34	0.00	
6120.00†	14.182	341.365	5995.10	-85.74	979.10	-330.17	0.00	
6220.00†	14.182	341.365	6092.06	-87.78	1002.31	-337.99	0.00	
6320.00†	14.182	341.365	6189.01	-89.81	1025.53	-345.82	0.00	
6420.00†	14.182	341.365	6285.96	-91.84	1048.75	-353.65	0.00	
6520.00†	14.182	341.365	6382.91	-93.87	1071.96	-361.48	0.00	
6598.36	14.182	341.365	6458.89	-95.47	1090.16	-367.62	0.00	End of Tangent
6620.00†	13.658	350.101	6479.89	-95.51	1095.19	-368.90	10.00	
6720.00†	15.443	30.096	6576.92	-85.42	1118.39	-364.24	10.00	
6820.00†	22.062	53.928	6671.69	-58.72	1141.03	-342.33	10.00	
6920.00†	30.514	66.162	6761.33	-16.22	1162.40	-303.83	10.00	
7020.00†	39.641	73.329	6843.12	40.79	1181.86	-249.92	10.00	
7120.00†	49.065	78.139	6914.56	110.58	1198.82	-182.22	10.00	
7220.00†	58.638	81.730	6973.50	191.02	1212.76	-102.80	10.00	
7320.00†	68.292	84.650	7018.13	279.68	1223.26	-14.07	10.00	
7420.00†	77.991	87.199	7047.10	373.85	1230.00	81.27	10.00	
7520.00†	87.711	89.569	7059.53	470.68	1232.77	180.32	10.00	
7543.54	90.000	90.117	7060.00 [†]	493.54	1232.83	203.85	10.00	End of 3D Arc
7620.00†	90.000	90.117	7060.00	567.74	1232.68	280.32	0.00	
7720.00†	90.000	90.117	7060.00	664.77	1232.47	380.32	0.00	
7820.00†	90.000	90.117	7060.00	761.80	1232.27	480.32	0.00	
7920.00†	90.000	90.117	7060.00	858.84	1232.06	580.32	0.00	
8020.00†	90.000	90.117	7060.00	955.87	1231.86	680.32	0.00	
8120.00†	90.000	90.117	7060.00	1052.90	1231.66	780.32	0.00	
8220.00†	90.000	90.117	7060.00	1149.94	1231.45	880.32	0.00	
8320.00†	90.000	90.117	7060.00	1246.97	1231.25	980.32	0.00	
8420.00†	90.000	90.117	7060.00	1344.00	1231.04	1080.32	0.00	



Planned Wellpath Report

WESTWIND 4 PWP (REV-B.0)

Page 5 of 8



REFERENCE WELLPATH IDENTIFICATION

Operator	EXTRACTION OIL & GAS	Slot	SLOT#04 WESTWIND 4 (1046'FSL & 252'FWL,SEC.07)
Area	COLORADO	Well	WESTWIND 4
Field	WELD COUNTY (NAD83/TRUE NORTH)	Wellbore	WESTWIND 4 PWB
Facility	SEC.07-T06N-R67W		

WELLPATH DATA (129 stations) † = interpolated/extrapolated station

MD [ft]	Inclination [°]	Azimuth [°]	TVD [ft]	Vert Sect [ft]	North [ft]	East [ft]	DLS [°/100ft]	Comments
8520.00†	90.000	90.117	7060.00	1441.03	1230.84	1180.32	0.00	
8620.00†	90.000	90.117	7060.00	1538.07	1230.63	1280.32	0.00	
8720.00†	90.000	90.117	7060.00	1635.10	1230.43	1380.32	0.00	
8820.00†	90.000	90.117	7060.00	1732.13	1230.22	1480.32	0.00	
8920.00†	90.000	90.117	7060.00	1829.17	1230.02	1580.31	0.00	
9020.00†	90.000	90.117	7060.00	1926.20	1229.82	1680.31	0.00	
9120.00†	90.000	90.117	7060.00	2023.23	1229.61	1780.31	0.00	
9220.00†	90.000	90.117	7060.00	2120.27	1229.41	1880.31	0.00	
9320.00†	90.000	90.117	7060.00	2217.30	1229.20	1980.31	0.00	
9420.00†	90.000	90.117	7060.00	2314.33	1229.00	2080.31	0.00	
9520.00†	90.000	90.117	7060.00	2411.36	1228.79	2180.31	0.00	
9620.00†	90.000	90.117	7060.00	2508.40	1228.59	2280.31	0.00	
9720.00†	90.000	90.117	7060.00	2605.43	1228.39	2380.31	0.00	
9820.00†	90.000	90.117	7060.00	2702.46	1228.18	2480.31	0.00	
9920.00†	90.000	90.117	7060.00	2799.50	1227.98	2580.31	0.00	
10020.00†	90.000	90.117	7060.00	2896.53	1227.77	2680.31	0.00	
10120.00†	90.000	90.117	7060.00	2993.56	1227.57	2780.31	0.00	
10220.00†	90.000	90.117	7060.00	3090.59	1227.36	2880.31	0.00	
10320.00†	90.000	90.117	7060.00	3187.63	1227.16	2980.31	0.00	
10420.00†	90.000	90.117	7060.00	3284.66	1226.95	3080.31	0.00	
10520.00†	90.000	90.117	7060.00	3381.69	1226.75	3180.31	0.00	
10620.00†	90.000	90.117	7060.00	3478.73	1226.55	3280.31	0.00	
10720.00†	90.000	90.117	7060.00	3575.76	1226.34	3380.31	0.00	
10820.00†	90.000	90.117	7060.00	3672.79	1226.14	3480.31	0.00	
10920.00†	90.000	90.117	7060.00	3769.83	1225.93	3580.31	0.00	
11020.00†	90.000	90.117	7060.00	3866.86	1225.73	3680.31	0.00	
11120.00†	90.000	90.117	7060.00	3963.89	1225.52	3780.31	0.00	
11220.00†	90.000	90.117	7060.00	4060.92	1225.32	3880.31	0.00	
11320.00†	90.000	90.117	7060.00	4157.96	1225.11	3980.31	0.00	
11420.00†	90.000	90.117	7060.00	4254.99	1224.91	4080.31	0.00	



Planned Wellpath Report

WESTWIND 4 PWP (REV-B.0)

Page 6 of 8



REFERENCE WELLPATH IDENTIFICATION

Operator	EXTRACTION OIL & GAS	Slot	SLOT#04 WESTWIND 4 (1046'FSL & 252'FWL,SEC.07)
Area	COLORADO	Well	WESTWIND 4
Field	WELD COUNTY (NAD83/TRUE NORTH)	Wellbore	WESTWIND 4 PWB
Facility	SEC.07-T06N-R67W		

WELLPATH DATA (129 stations) † = interpolated/extrapolated station

MD [ft]	Inclination [°]	Azimuth [°]	TVD [ft]	Vert Sect [ft]	North [ft]	East [ft]	DLS [°/100ft]	Comments
11520.00†	90.000	90.117	7060.00	4352.02	1224.71	4180.31	0.00	
11620.00†	90.000	90.117	7060.00	4449.06	1224.50	4280.31	0.00	
11720.00†	90.000	90.117	7060.00	4546.09	1224.30	4380.31	0.00	
11820.00†	90.000	90.117	7060.00	4643.12	1224.09	4480.31	0.00	
11920.00†	90.000	90.117	7060.00	4740.15	1223.89	4580.31	0.00	
12020.00†	90.000	90.117	7060.00	4837.19	1223.68	4680.31	0.00	
12120.00†	90.000	90.117	7060.00	4934.22	1223.48	4780.31	0.00	
12220.00†	90.000	90.117	7060.00	5031.25	1223.28	4880.31	0.00	
12291.43	90.000	90.117	7060.00 ²	5100.57	1223.13	4951.74	0.00	End of Tangent

HOLE & CASING SECTIONS - Ref Wellbore: WESTWIND 4 PWB Ref Wellpath: WESTWIND 4 PWP (REV-B.0)

String/Diameter	Start MD [ft]	End MD [ft]	Interval [ft]	Start TVD [ft]	End TVD [ft]	Start N/S [ft]	Start E/W [ft]	End N/S [ft]	End E/W [ft]
9.625in Casing Surface	20.00	1500.00	1480.00	20.00	1500.00	0.00	0.00	0.00	0.00
7.875in Open Hole	20.00	12291.40	12271.40	20.00	7060.00	0.00	0.00	1223.13	4951.71



Planned Wellpath Report

WESTWIND 4 PWP (REV-B.0)

Page 7 of 8



REFERENCE WELLPATH IDENTIFICATION

Operator	EXTRACTION OIL & GAS	Slot	SLOT#04 WESTWIND 4 (1046'FSL & 252'FWL,SEC.07)
Area	COLORADO	Well	WESTWIND 4
Field	WELD COUNTY (NAD83/TRUE NORTH)	Wellbore	WESTWIND 4 PWB
Facility	SEC.07-T06N-R67W		

TARGETS

Name	MD [ft]	TVD [ft]	North [ft]	East [ft]	Grid East [US ft]	Grid North [US ft]	Latitude	Longitude	Shape
SEC.07-T06N-R67W		-4.00	75.03	-1.39	3154839.47	1424332.30	40°29'48.692"N	104°56'35.682"W	polygon
SEC.08-T06N-R67W		-4.00	75.03	-1.39	3154839.47	1424332.30	40°29'48.692"N	104°56'35.682"W	polygon
2) WESTWIND 4 BHL ON PLAT REV-1(2206'FSL & 310'FWL,SEC.08)	12291.43	7060.00	1223.13	4951.74	3159785.12	1425511.44	40°30'00.032"N	104°55'31.566"W	point
1) WESTWIND 4 LANDING	7543.54	7060.00	1232.83	203.85	3155037.43	1425491.33	40°30'00.133"N	104°56'33.025"W	point

SURVEY PROGRAM - Ref Wellbore: WESTWIND 4 PWB Ref Wellpath: WESTWIND 4 PWP (REV-B.0)

Start MD [ft]	End MD [ft]	Positional Uncertainty Model	Log Name/Comment	Wellbore
20.00	12291.43	NaviTrak (Standard)		WESTWIND 4 PWB



Planned Wellpath Report

WESTWIND 4 PWP (REV-B.0)
Page 8 of 8



REFERENCE WELLPATH IDENTIFICATION			
Operator	EXTRACTION OIL & GAS	Slot	SLOT#04 WESTWIND 4 (1046'FSL & 252'FWL,SEC.07)
Area	COLORADO	Well	WESTWIND 4
Field	WELD COUNTY (NAD83/TRUE NORTH)	Wellbore	WESTWIND 4 PWB
Facility	SEC.07-T06N-R67W		

DESIGN COMMENTS				
MD [ft]	Inclination [°]	Azimuth [°]	TVD [ft]	Comment
20.00	0.000	341.365	20.00	Tie On
1550.00	0.000	341.365	1550.00	End of Tangent
2259.12	14.182	341.365	2251.90	End of Build
6598.36	14.182	341.365	6458.89	End of Tangent
7543.54	90.000	90.117	7060.00	End of 3D Arc
12291.43	90.000	90.117	7060.00	End of Tangent