

EXTRACTION OIL & GAS

Location: COLORADO Slot: SLOT#01 WESTWIND 1 (1121'FSL & 251'FWL,SEC.07)
Field: WELD COUNTY (NAD83/TRUE NORTH) Well: WESTWIND 1
Facility: SEC.07-T06N-R67W Wellbore: WESTWIND 1 PWB

Plot reference wellpath is WESTWIND 1 PWP (REV-B.0)

True vertical depths are referenced to SAVANNA 802 (20'KB) (RKB)	Grid System: NAD83 / Lambert Colorado SP, Northern Zone (501), US feet
Measured depths are referenced to SAVANNA 802 (20'KB) (RKB)	North Reference: True north
SAVANNA 802 (20'KB) (RKB) to Mean Sea Level: 4839 feet	Scale: True distance
Mean Sea Level to Mud line (At Slot: SLOT#01 WESTWIND 1 (1121'FSL & 251'FWL,SEC.07)): 0 feet	Depths are in feet
Coordinates are in feet referenced to Slot	Created by: ingnjmr on 8/4/2015

Location Information

Facility Name	Grid East (US ft)	Grid North (US ft)	Latitude	Longitude
SEC.07-T06N-R67W	3154839.470	1424332.263	40°29'48.692"N	104°56'35.682"W
Slot	Local N (ft)	Local E (ft)	Grid East (US ft)	Grid North (US ft)
SLOT#01 WESTWIND 1 (1121'FSL & 251'FWL,SEC.07)	0.00	0.00	3154839.470	1424332.263
SAVANNA 802 (20'KB) (RKB) to Mud line (At Slot: SLOT#01 WESTWIND 1 (1121'FSL & 251'FWL,SEC.07))			4839R	
Mean Sea Level to Mud line (At Slot: SLOT#01 WESTWIND 1 (1121'FSL & 251'FWL,SEC.07))			0R	
SAVANNA 802 (20'KB) (RKB) to Mean Sea Level			4839R	

Targets

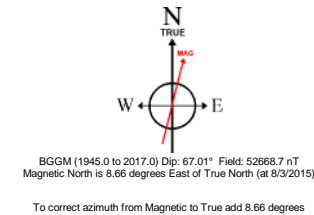
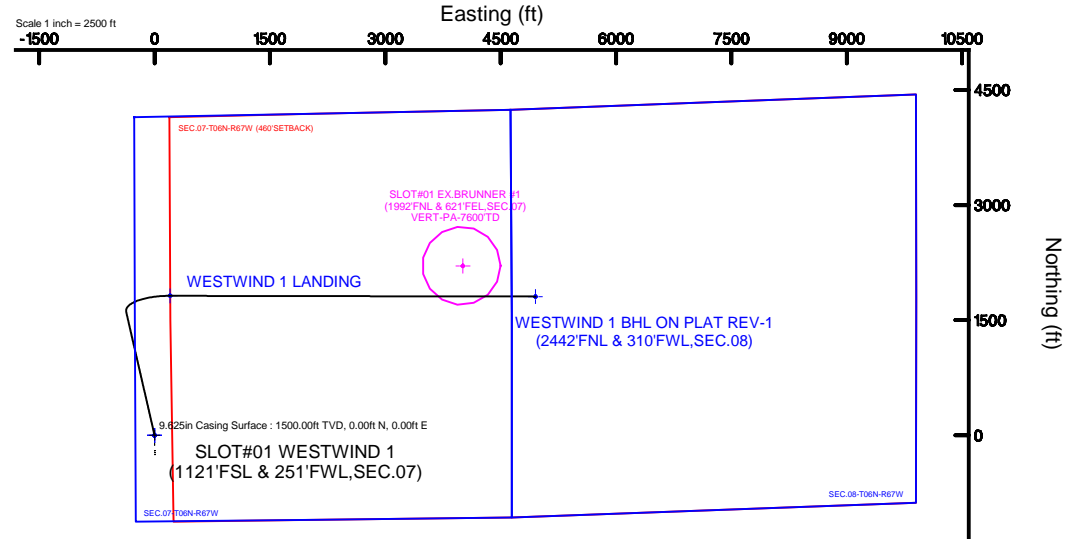
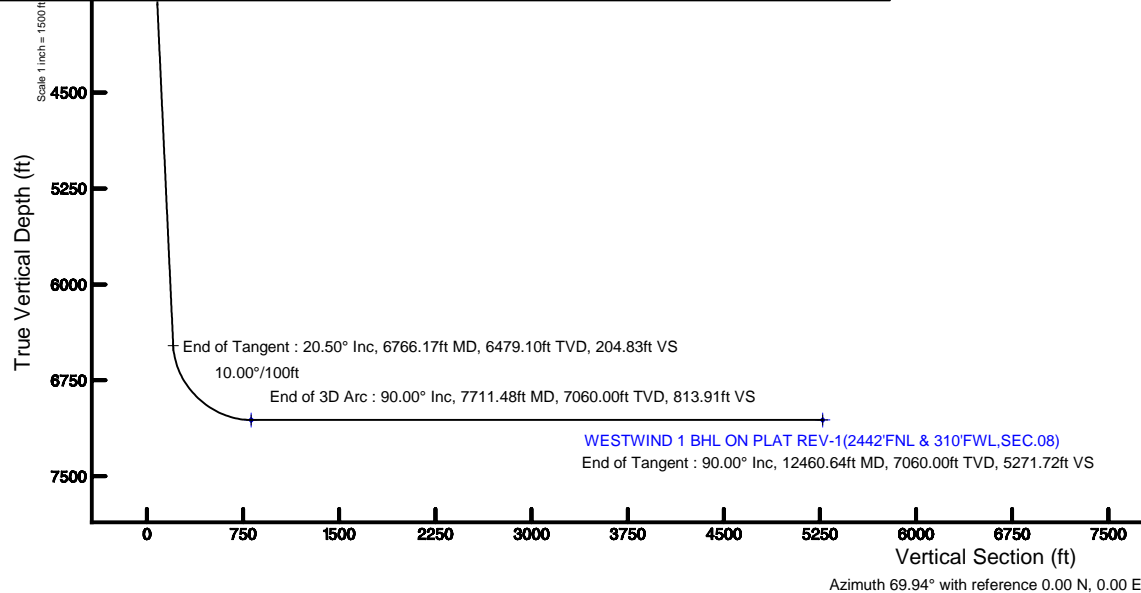
Name	MD (ft)	TVD (ft)	Local N (ft)	Local E (ft)	Grid East (US ft)	Grid North (US ft)	Latitude	Longitude
SEC.07-T06N-R67W		-4.00	0.04	0.00	3154839.47	1424332.30	40°29'48.692"N	104°56'35.682"W
SEC.08-T06N-R67W		-4.00	0.04	0.00	3154839.47	1424332.30	40°29'48.692"N	104°56'35.682"W
SEC.07-T06N-R67W (460'SETBACK)		7060.00	0.00	0.00	3154839.47	1424332.26	40°29'48.692"N	104°56'35.682"W
WESTWIND 1 BHL ON PLAT REV-1(2442'FNL & 310'FWL,SEC.08)	12460.64	7060.00	1808.29	4951.88	3155979.73	1426171.54	40°30'06.556"N	104°55'31.580"W
WESTWIND 1 LANDING	7711.48	7060.00	1817.63	202.74	3155030.78	1426151.06	40°30'06.653"N	104°56'33.058"W

Survey Program

Start MD (ft)	End MD (ft)	Tool	Model	Log Name/Comment	Wellbore
20.00	12460.64	NaviTrak	NaviTrak (Standard)		WESTWIND 1 PWB

Well Profile Data

Design Comment	MD (ft)	Inc (°)	Az (°)	TVD (ft)	Local N (ft)	Local E (ft)	DLS (°/100ft)	VS (ft)
Tie On	20.00	0.000	347.075	20.00	0.00	0.00	0.00	0.00
End of Tangent	1550.00	0.000	347.075	1550.00	0.00	0.00	0.00	0.00
End of Build	2574.84	20.497	347.075	2553.12	176.77	-40.57	2.00	22.53
End of Tangent	6766.17	20.497	347.075	6479.10	1607.20	-368.85	0.00	204.83
End of 3D Arc	7711.48	90.000	90.113	7060.00	1817.63	202.74	10.00	813.91
End of Tangent	12460.64	90.000	90.113	7060.00	1808.29	4951.88	0.00	5271.72





Planned Wellpath Report

WESTWIND 1 PWP (REV-B.0)

Page 1 of 8



REFERENCE WELLPATH IDENTIFICATION

Operator	EXTRACTION OIL & GAS	Slot	SLOT#01 WESTWIND 1 (1121'FSL & 251'FWL,SEC.07)
Area	COLORADO	Well	WESTWIND 1
Field	WELD COUNTY (NAD83/TRUE NORTH)	Wellbore	WESTWIND 1 PWB
Facility	SEC.07-T06N-R67W		

REPORT SETUP INFORMATION

Projection System	NAD83 / Lambert Colorado SP, Northern Zone (501), US feet	Software System	WellArchitect® 4.1.1
North Reference	True	User	Ingmjmr
Scale	0.999966	Report Generated	8/4/2015 at 5:01:47 PM
Convergence at slot	0.36° East	Database/Source file	Denver/WESTWIND_1_PWB.xml

WELLPATH LOCATION

	Local coordinates		Grid coordinates		Geographic coordinates	
	North[ft]	East[ft]	Easting[US ft]	Northing[US ft]	Latitude	Longitude
Slot Location	0.00	0.00	3154839.47	1424332.26	40°29'48.692"N	104°56'35.682"W
Facility Reference Pt			3154839.47	1424332.26	40°29'48.692"N	104°56'35.682"W
Field Reference Pt			3185481.27	1419166.81	40°28'55.560"N	104°49'59.556"W

WELLPATH DATUM

Calculation method	Minimum curvature	SAVANNA 802 (20'KB) (RKB) to Facility Vertical Datum	4839.00ft
Horizontal Reference Pt	Slot	SAVANNA 802 (20'KB) (RKB) to Mean Sea Level	4839.00ft
Vertical Reference Pt	SAVANNA 802 (20'KB) (RKB)	SAVANNA 802 (20'KB) (RKB) to Mud Line at Slot (SLOT#01 WESTWIND 1 (1121'FSL & 251'FWL,SEC.07))	4839.00ft
MD Reference Pt	SAVANNA 802 (20'KB) (RKB)	Section Origin	N 0.00, E 0.00 ft
Field Vertical Reference	Mean Sea Level	Section Azimuth	69.94°



Planned Wellpath Report

WESTWIND 1 PWP (REV-B.0)

Page 2 of 8



REFERENCE WELLPATH IDENTIFICATION

Operator	EXTRACTION OIL & GAS	Slot	SLOT#01 WESTWIND 1 (1121'FSL & 251'FWL,SEC.07)
Area	COLORADO	Well	WESTWIND 1
Field	WELD COUNTY (NAD83/TRUE NORTH)	Wellbore	WESTWIND 1 PWB
Facility	SEC.07-T06N-R67W		

WELLPATH DATA (131 stations) † = interpolated/extrapolated station

MD [ft]	Inclination [°]	Azimuth [°]	TVD [ft]	Vert Sect [ft]	North [ft]	East [ft]	DLS [°/100ft]	Comments
0.00†	0.000	347.075	0.00	0.00	0.00	0.00	0.00	
20.00	0.000	347.075	20.00	0.00	0.00	0.00	0.00	Tie On
120.00†	0.000	347.075	120.00	0.00	0.00	0.00	0.00	
220.00†	0.000	347.075	220.00	0.00	0.00	0.00	0.00	
320.00†	0.000	347.075	320.00	0.00	0.00	0.00	0.00	
420.00†	0.000	347.075	420.00	0.00	0.00	0.00	0.00	
520.00†	0.000	347.075	520.00	0.00	0.00	0.00	0.00	
620.00†	0.000	347.075	620.00	0.00	0.00	0.00	0.00	
720.00†	0.000	347.075	720.00	0.00	0.00	0.00	0.00	
820.00†	0.000	347.075	820.00	0.00	0.00	0.00	0.00	
920.00†	0.000	347.075	920.00	0.00	0.00	0.00	0.00	
1020.00†	0.000	347.075	1020.00	0.00	0.00	0.00	0.00	
1120.00†	0.000	347.075	1120.00	0.00	0.00	0.00	0.00	
1220.00†	0.000	347.075	1220.00	0.00	0.00	0.00	0.00	
1320.00†	0.000	347.075	1320.00	0.00	0.00	0.00	0.00	
1420.00†	0.000	347.075	1420.00	0.00	0.00	0.00	0.00	
1520.00†	0.000	347.075	1520.00	0.00	0.00	0.00	0.00	
1550.00	0.000	347.075	1550.00	0.00	0.00	0.00	0.00	End of Tangent
1620.00†	1.400	347.075	1619.99	0.11	0.83	-0.19	2.00	
1720.00†	3.400	347.075	1719.90	0.63	4.91	-1.13	2.00	
1820.00†	5.400	347.075	1819.60	1.58	12.39	-2.84	2.00	
1920.00†	7.400	347.075	1918.97	2.96	23.26	-5.34	2.00	
2020.00†	9.400	347.075	2017.89	4.78	37.49	-8.60	2.00	
2120.00†	11.400	347.075	2116.25	7.02	55.09	-12.64	2.00	
2220.00†	13.400	347.075	2213.91	9.69	76.02	-17.45	2.00	
2320.00†	15.400	347.075	2310.76	12.78	100.25	-23.01	2.00	
2420.00†	17.400	347.075	2406.69	16.28	127.77	-29.32	2.00	
2520.00†	19.400	347.075	2501.57	20.20	158.53	-36.38	2.00	
2574.84	20.497	347.075	2553.12	22.53	176.77	-40.57	2.00	End of Build
2620.00†	20.497	347.075	2595.42	24.49	192.18	-44.11	0.00	



Planned Wellpath Report

WESTWIND 1 PWP (REV-B.0)

Page 3 of 8



REFERENCE WELLPATH IDENTIFICATION

Operator	EXTRACTION OIL & GAS	Slot	SLOT#01 WESTWIND 1 (1121'FSL & 251'FWL,SEC.07)
Area	COLORADO	Well	WESTWIND 1
Field	WELD COUNTY (NAD83/TRUE NORTH)	Wellbore	WESTWIND 1 PWB
Facility	SEC.07-T06N-R67W		

WELLPATH DATA (131 stations) † = interpolated/extrapolated station

MD [ft]	Inclination [°]	Azimuth [°]	TVD [ft]	Vert Sect [ft]	North [ft]	East [ft]	DLS [°/100ft]	Comments
2720.00†	20.497	347.075	2689.09	28.84	226.31	-51.94	0.00	
2820.00†	20.497	347.075	2782.76	33.19	260.44	-59.77	0.00	
2920.00†	20.497	347.075	2876.43	37.54	294.57	-67.60	0.00	
3020.00†	20.497	347.075	2970.10	41.89	328.69	-75.43	0.00	
3120.00†	20.497	347.075	3063.77	46.24	362.82	-83.27	0.00	
3220.00†	20.497	347.075	3157.44	50.59	396.95	-91.10	0.00	
3320.00†	20.497	347.075	3251.11	54.94	431.08	-98.93	0.00	
3420.00†	20.497	347.075	3344.77	59.29	465.21	-106.76	0.00	
3520.00†	20.497	347.075	3438.44	63.64	499.34	-114.60	0.00	
3620.00†	20.497	347.075	3532.11	67.99	533.46	-122.43	0.00	
3720.00†	20.497	347.075	3625.78	72.34	567.59	-130.26	0.00	
3820.00†	20.497	347.075	3719.45	76.69	601.72	-138.09	0.00	
3920.00†	20.497	347.075	3813.12	81.03	635.85	-145.93	0.00	
4020.00†	20.497	347.075	3906.79	85.38	669.98	-153.76	0.00	
4120.00†	20.497	347.075	4000.46	89.73	704.11	-161.59	0.00	
4220.00†	20.497	347.075	4094.13	94.08	738.23	-169.42	0.00	
4320.00†	20.497	347.075	4187.80	98.43	772.36	-177.25	0.00	
4420.00†	20.497	347.075	4281.47	102.78	806.49	-185.09	0.00	
4520.00†	20.497	347.075	4375.14	107.13	840.62	-192.92	0.00	
4620.00†	20.497	347.075	4468.81	111.48	874.75	-200.75	0.00	
4720.00†	20.497	347.075	4562.47	115.83	908.88	-208.58	0.00	
4820.00†	20.497	347.075	4656.14	120.18	943.00	-216.42	0.00	
4920.00†	20.497	347.075	4749.81	124.53	977.13	-224.25	0.00	
5020.00†	20.497	347.075	4843.48	128.88	1011.26	-232.08	0.00	
5120.00†	20.497	347.075	4937.15	133.23	1045.39	-239.91	0.00	
5220.00†	20.497	347.075	5030.82	137.58	1079.52	-247.75	0.00	
5320.00†	20.497	347.075	5124.49	141.93	1113.64	-255.58	0.00	
5420.00†	20.497	347.075	5218.16	146.28	1147.77	-263.41	0.00	
5520.00†	20.497	347.075	5311.83	150.63	1181.90	-271.24	0.00	
5620.00†	20.497	347.075	5405.50	154.97	1216.03	-279.07	0.00	



Planned Wellpath Report

WESTWIND 1 PWP (REV-B.0)

Page 4 of 8



REFERENCE WELLPATH IDENTIFICATION

Operator	EXTRACTION OIL & GAS	Slot	SLOT#01 WESTWIND 1 (1121'FSL & 251'FWL,SEC.07)
Area	COLORADO	Well	WESTWIND 1
Field	WELD COUNTY (NAD83/TRUE NORTH)	Wellbore	WESTWIND 1 PWB
Facility	SEC.07-T06N-R67W		

WELLPATH DATA (131 stations) † = interpolated/extrapolated station

MD [ft]	Inclination [°]	Azimuth [°]	TVD [ft]	Vert Sect [ft]	North [ft]	East [ft]	DLS [°/100ft]	Comments
5720.00†	20.497	347.075	5499.17	159.32	1250.16	-286.91	0.00	
5820.00†	20.497	347.075	5592.84	163.67	1284.29	-294.74	0.00	
5920.00†	20.497	347.075	5686.50	168.02	1318.41	-302.57	0.00	
6020.00†	20.497	347.075	5780.17	172.37	1352.54	-310.40	0.00	
6120.00†	20.497	347.075	5873.84	176.72	1386.67	-318.24	0.00	
6220.00†	20.497	347.075	5967.51	181.07	1420.80	-326.07	0.00	
6320.00†	20.497	347.075	6061.18	185.42	1454.93	-333.90	0.00	
6420.00†	20.497	347.075	6154.85	189.77	1489.06	-341.73	0.00	
6520.00†	20.497	347.075	6248.52	194.12	1523.18	-349.57	0.00	
6620.00†	20.497	347.075	6342.19	198.47	1557.31	-357.40	0.00	
6720.00†	20.497	347.075	6435.86	202.82	1591.44	-365.23	0.00	
6766.17	20.497	347.075	6479.10	204.83	1607.20	-368.85	0.00	End of Tangent
6820.00†	20.028	2.602	6529.64	209.55	1625.60	-370.54	10.00	
6920.00†	22.658	29.371	6623.00	230.84	1659.58	-360.29	10.00	
7020.00†	28.588	48.177	6713.27	267.78	1692.41	-332.94	10.00	
7120.00†	36.229	60.306	6797.72	319.27	1723.08	-289.33	10.00	
7220.00†	44.705	68.524	6873.78	383.73	1750.66	-230.78	10.00	
7320.00†	53.615	74.546	6939.15	459.20	1774.33	-159.07	10.00	
7420.00†	62.764	79.308	6991.82	543.40	1793.35	-76.38	10.00	
7520.00†	72.049	83.337	7030.22	633.77	1807.15	14.78	10.00	
7620.00†	81.409	86.959	7053.15	727.55	1815.31	111.64	10.00	
7711.48	90.000	90.113	7060.00 ¹	813.91	1817.63	202.74	10.00	End of 3D Arc
7720.00†	90.000	90.113	7060.00	821.91	1817.61	211.26	0.00	
7820.00†	90.000	90.113	7060.00	915.78	1817.41	311.26	0.00	
7920.00†	90.000	90.113	7060.00	1009.64	1817.22	411.26	0.00	
8020.00†	90.000	90.113	7060.00	1103.51	1817.02	511.26	0.00	
8120.00†	90.000	90.113	7060.00	1197.37	1816.82	611.26	0.00	
8220.00†	90.000	90.113	7060.00	1291.24	1816.63	711.26	0.00	
8320.00†	90.000	90.113	7060.00	1385.10	1816.43	811.26	0.00	
8420.00†	90.000	90.113	7060.00	1478.97	1816.23	911.26	0.00	



Planned Wellpath Report

WESTWIND 1 PWP (REV-B.0)

Page 5 of 8



REFERENCE WELLPATH IDENTIFICATION

Operator	EXTRACTION OIL & GAS	Slot	SLOT#01 WESTWIND 1 (1121'FSL & 251'FWL,SEC.07)
Area	COLORADO	Well	WESTWIND 1
Field	WELD COUNTY (NAD83/TRUE NORTH)	Wellbore	WESTWIND 1 PWB
Facility	SEC.07-T06N-R67W		

WELLPATH DATA (131 stations) † = interpolated/extrapolated station

MD [ft]	Inclination [°]	Azimuth [°]	TVD [ft]	Vert Sect [ft]	North [ft]	East [ft]	DLS [°/100ft]	Comments
8520.00†	90.000	90.113	7060.00	1572.83	1816.04	1011.26	0.00	
8620.00†	90.000	90.113	7060.00	1666.70	1815.84	1111.26	0.00	
8720.00†	90.000	90.113	7060.00	1760.56	1815.64	1211.26	0.00	
8820.00†	90.000	90.113	7060.00	1854.43	1815.45	1311.26	0.00	
8920.00†	90.000	90.113	7060.00	1948.29	1815.25	1411.26	0.00	
9020.00†	90.000	90.113	7060.00	2042.16	1815.05	1511.26	0.00	
9120.00†	90.000	90.113	7060.00	2136.03	1814.86	1611.26	0.00	
9220.00†	90.000	90.113	7060.00	2229.89	1814.66	1711.26	0.00	
9320.00†	90.000	90.113	7060.00	2323.76	1814.46	1811.26	0.00	
9420.00†	90.000	90.113	7060.00	2417.62	1814.27	1911.26	0.00	
9520.00†	90.000	90.113	7060.00	2511.49	1814.07	2011.26	0.00	
9620.00†	90.000	90.113	7060.00	2605.35	1813.87	2111.26	0.00	
9720.00†	90.000	90.113	7060.00	2699.22	1813.68	2211.26	0.00	
9820.00†	90.000	90.113	7060.00	2793.08	1813.48	2311.26	0.00	
9920.00†	90.000	90.113	7060.00	2886.95	1813.28	2411.25	0.00	
10020.00†	90.000	90.113	7060.00	2980.81	1813.09	2511.25	0.00	
10120.00†	90.000	90.113	7060.00	3074.68	1812.89	2611.25	0.00	
10220.00†	90.000	90.113	7060.00	3168.54	1812.69	2711.25	0.00	
10320.00†	90.000	90.113	7060.00	3262.41	1812.50	2811.25	0.00	
10420.00†	90.000	90.113	7060.00	3356.27	1812.30	2911.25	0.00	
10520.00†	90.000	90.113	7060.00	3450.14	1812.10	3011.25	0.00	
10620.00†	90.000	90.113	7060.00	3544.01	1811.91	3111.25	0.00	
10720.00†	90.000	90.113	7060.00	3637.87	1811.71	3211.25	0.00	
10820.00†	90.000	90.113	7060.00	3731.74	1811.51	3311.25	0.00	
10920.00†	90.000	90.113	7060.00	3825.60	1811.32	3411.25	0.00	
11020.00†	90.000	90.113	7060.00	3919.47	1811.12	3511.25	0.00	
11120.00†	90.000	90.113	7060.00	4013.33	1810.92	3611.25	0.00	
11220.00†	90.000	90.113	7060.00	4107.20	1810.73	3711.25	0.00	
11320.00†	90.000	90.113	7060.00	4201.06	1810.53	3811.25	0.00	
11420.00†	90.000	90.113	7060.00	4294.93	1810.33	3911.25	0.00	



Planned Wellpath Report

WESTWIND 1 PWP (REV-B.0)

Page 6 of 8



REFERENCE WELLPATH IDENTIFICATION

Operator	EXTRACTION OIL & GAS	Slot	SLOT#01 WESTWIND 1 (1121'FSL & 251'FWL,SEC.07)
Area	COLORADO	Well	WESTWIND 1
Field	WELD COUNTY (NAD83/TRUE NORTH)	Wellbore	WESTWIND 1 PWB
Facility	SEC.07-T06N-R67W		

WELLPATH DATA (131 stations) † = interpolated/extrapolated station

MD [ft]	Inclination [°]	Azimuth [°]	TVD [ft]	Vert Sect [ft]	North [ft]	East [ft]	DLS [°/100ft]	Comments
11520.00†	90.000	90.113	7060.00	4388.79	1810.14	4011.25	0.00	
11620.00†	90.000	90.113	7060.00	4482.66	1809.94	4111.25	0.00	
11720.00†	90.000	90.113	7060.00	4576.52	1809.74	4211.25	0.00	
11820.00†	90.000	90.113	7060.00	4670.39	1809.55	4311.25	0.00	
11920.00†	90.000	90.113	7060.00	4764.25	1809.35	4411.25	0.00	
12020.00†	90.000	90.113	7060.00	4858.12	1809.15	4511.25	0.00	
12120.00†	90.000	90.113	7060.00	4951.98	1808.96	4611.25	0.00	
12220.00†	90.000	90.113	7060.00	5045.85	1808.76	4711.25	0.00	
12320.00†	90.000	90.113	7060.00	5139.72	1808.56	4811.25	0.00	
12420.00†	90.000	90.113	7060.00	5233.58	1808.37	4911.25	0.00	
12460.64	90.000	90.113	7060.00 ²	5271.72	1808.29	4951.88	0.00	End of Tangent

HOLE & CASING SECTIONS - Ref Wellbore: WESTWIND 1 PWB Ref Wellpath: WESTWIND 1 PWP (REV-B.0)

String/Diameter	Start MD [ft]	End MD [ft]	Interval [ft]	Start TVD [ft]	End TVD [ft]	Start N/S [ft]	Start E/W [ft]	End N/S [ft]	End E/W [ft]
7.875in Open Hole	1500.00	12460.60	10960.60	1500.00	7060.00	0.00	0.00	1808.29	4951.85
9.625in Casing Surface	20.00	1500.00	1480.00	20.00	1500.00	0.00	0.00	0.00	0.00



Planned Wellpath Report

WESTWIND 1 PWP (REV-B.0)

Page 7 of 8



REFERENCE WELLPATH IDENTIFICATION

Operator	EXTRACTION OIL & GAS	Slot	SLOT#01 WESTWIND 1 (1121'FSL & 251'FWL,SEC.07)
Area	COLORADO	Well	WESTWIND 1
Field	WELD COUNTY (NAD83/TRUE NORTH)	Wellbore	WESTWIND 1 PWB
Facility	SEC.07-T06N-R67W		

TARGETS

Name	MD [ft]	TVD [ft]	North [ft]	East [ft]	Grid East [US ft]	Grid North [US ft]	Latitude	Longitude	Shape
SEC.07-T06N-R67W		-4.00	0.04	0.00	3154839.47	1424332.30	40°29'48.692"N	104°56'35.682"W	polygon
SEC.08-T06N-R67W		-4.00	0.04	0.00	3154839.47	1424332.30	40°29'48.692"N	104°56'35.682"W	polygon
SEC.07-T06N-R67W (460'SETBACK)		7060.00	0.00	0.00	3154839.47	1424332.26	40°29'48.692"N	104°56'35.682"W	polygon
2) WESTWIND 1 BHL ON PLAT REV-1(2442'FNL & 310'FWL,SEC.08)	12460.64	7060.00	1808.29	4951.88	3159779.73	1426171.54	40°30'06.556"N	104°55'31.580"W	point
1) WESTWIND 1 LANDING	7711.48	7060.00	1817.63	202.74	3155030.78	1426151.06	40°30'06.653"N	104°56'33.058"W	point

SURVEY PROGRAM - Ref Wellbore: WESTWIND 1 PWB Ref Wellpath: WESTWIND 1 PWP (REV-B.0)

Start MD [ft]	End MD [ft]	Positional Uncertainty Model	Log Name/Comment	Wellbore
20.00	12460.64	NaviTrak (Standard)		WESTWIND 1 PWB



Planned Wellpath Report

WESTWIND 1 PWP (REV-B.0)
Page 8 of 8



REFERENCE WELLPATH IDENTIFICATION			
Operator	EXTRACTION OIL & GAS	Slot	SLOT#01 WESTWIND 1 (1121'FSL & 251'FWL,SEC.07)
Area	COLORADO	Well	WESTWIND 1
Field	WELD COUNTY (NAD83/TRUE NORTH)	Wellbore	WESTWIND 1 PWB
Facility	SEC.07-T06N-R67W		

DESIGN COMMENTS				
MD [ft]	Inclination [°]	Azimuth [°]	TVD [ft]	Comment
20.00	0.000	347.075	20.00	Tie On
1550.00	0.000	347.075	1550.00	End of Tangent
2574.84	20.497	347.075	2553.12	End of Build
6766.17	20.497	347.075	6479.10	End of Tangent
7711.48	90.000	90.113	7060.00	End of 3D Arc
12460.64	90.000	90.113	7060.00	End of Tangent