

BRAN-DEX

WIRELINE SERVICES

CEMENT BOND LOG GAMMA RAY COLLAR CORRELATION LOG

Company MERIT ENERGY COMPANY
Well LOHR 41-13
Field WATTENBERG
County WELD
State COLORADO

Company MERIT ENERGY COMPANY
Well LOHR 41-13
Field WATTENBERG
County WELD
State COLORADO
Location NE/NE
Other Services NONE

SEC. 13 TWP. 5 N RGE. 64 W

Permanent Datum GROUND LEVEL Elevation 4575
Log Measured From KELLY BUSHING K.B. 4585
Drilling Measured From KELLY BUSHING D.F. 4584
GL 4575

Date

04-MAY-2004

Run Number
Depth Driller
Depth Logger
Bottom Logged Interval
Top Log Interval
Open Hole Size
Type Fluid
Density / Viscosity

ONE
5623
6825
6820
20
7 7/8
WATER

Max. Recorded Temp
Estimated Cement Top
Time Well Ready
Time Logger on Bottom
Equipment Number

NOT RECORDED
SEE REMARKS

Recorded By
Witnessed By

456MASTRED
FORT MORGAN
JIM MCKIE
MR. DANNY GREEN

Run Number

Borehole Record
Bit From

To

Size

Tubing Record
Height From

To

Casing Record
Surface String
Prot. String
Production String
Liner

Size

Wgt/Ft

Top

Bottom

TOTAL DEPTH

<<< Fold Here >>>

All interpretations are opinions based on inferences from electrical or other measurements and we cannot and do not guarantee the accuracy or correctness of any interpretation and we shall not, except in the case of gross or wilful negligence on our part, be liable or responsible for any loss, costs, damages, or expenses incurred or sustained by anyone resulting from any interpretation made by any of our officers, agents or employees. These interpretations are also subject to our general terms and conditions set out in our current Price Schedule.

Comments

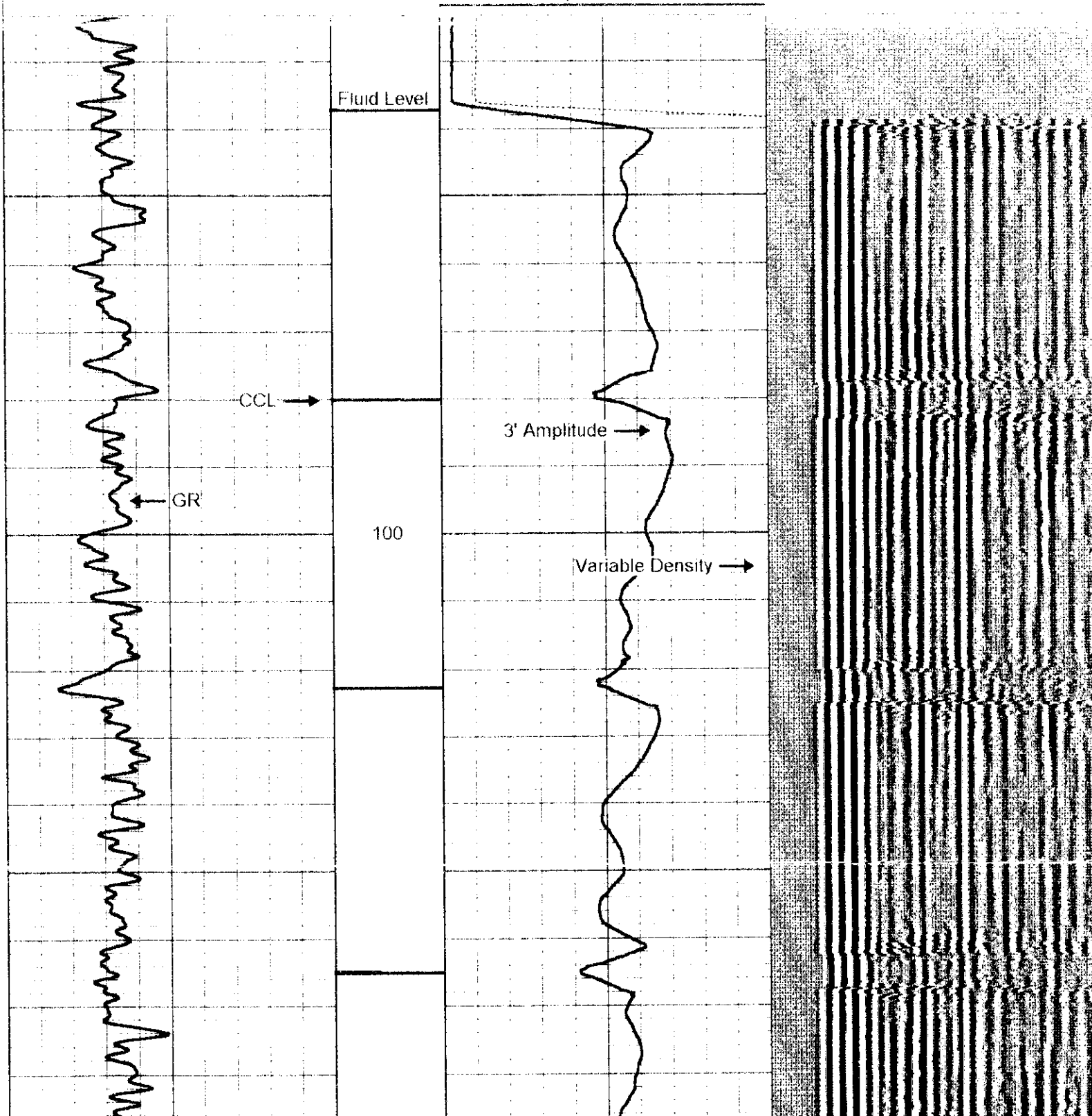
LOG CORRELATED TO CDN DATED 30-APR-2004

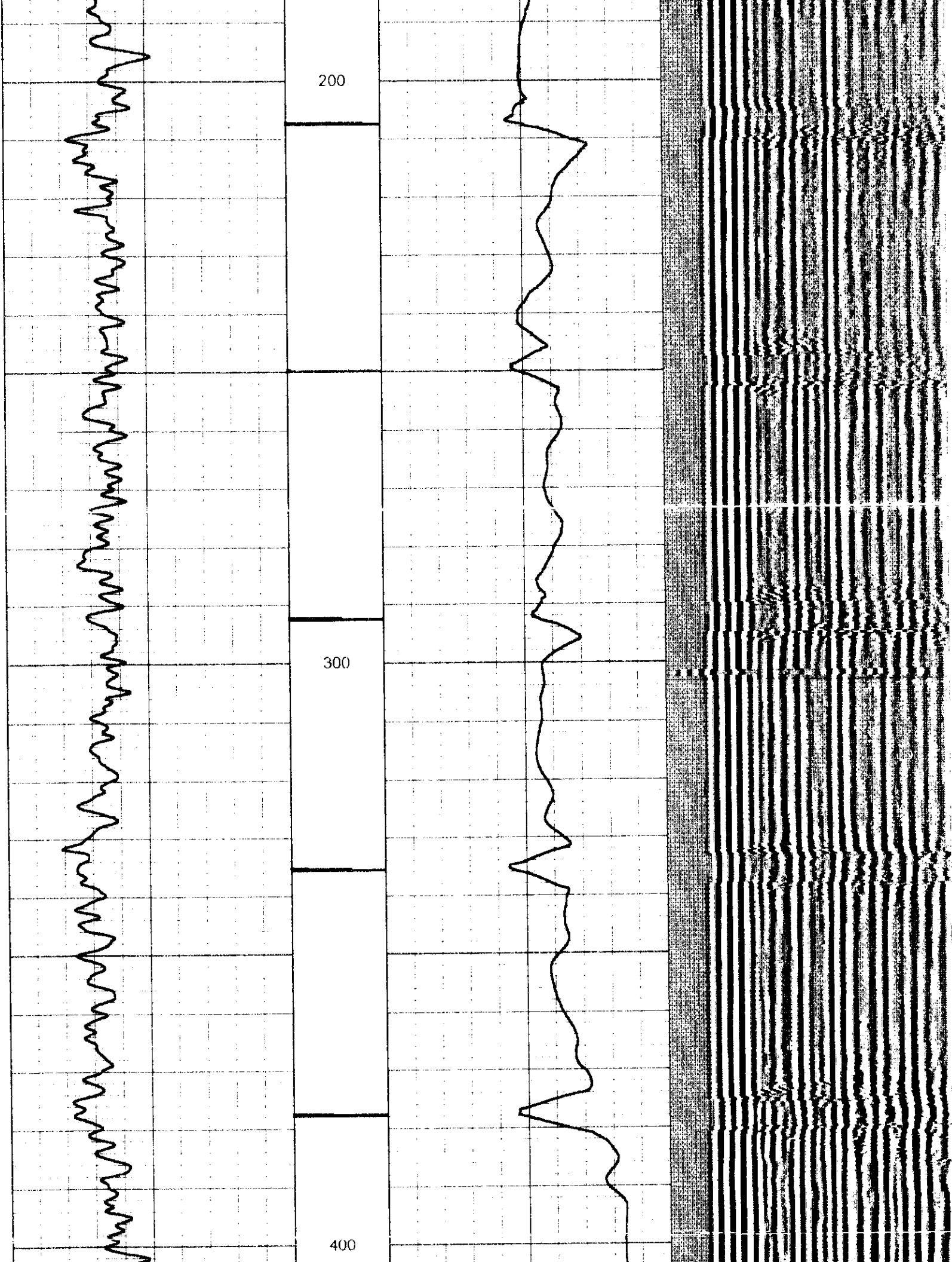
LIGHT CEMENT CIRCULATED TO SURFACE

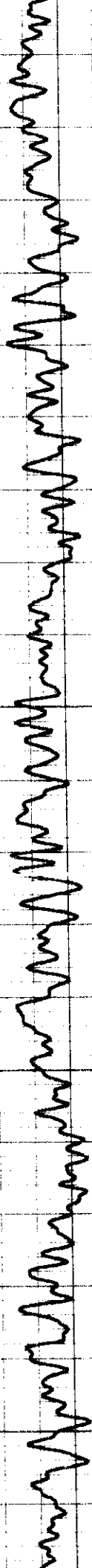
TOP OF HEAVY CEMENT AT 5960

Database File: lch4113.db
Dataset Pathname: pass1
Presentation Format: cbix
Dataset Creation: Tue May 04 07:51:45 2004 by Log Warrior Version 6.6
Charted by: Depth in Feet scaled 1:240

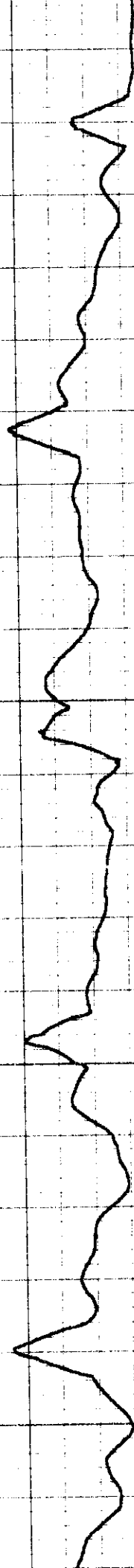
Gamma Ray (GAPI) 180 - 1 Collars 5 0 Amplitude (mV) 30 200 Variable Density 1200
0 Amplitude (mV) 85



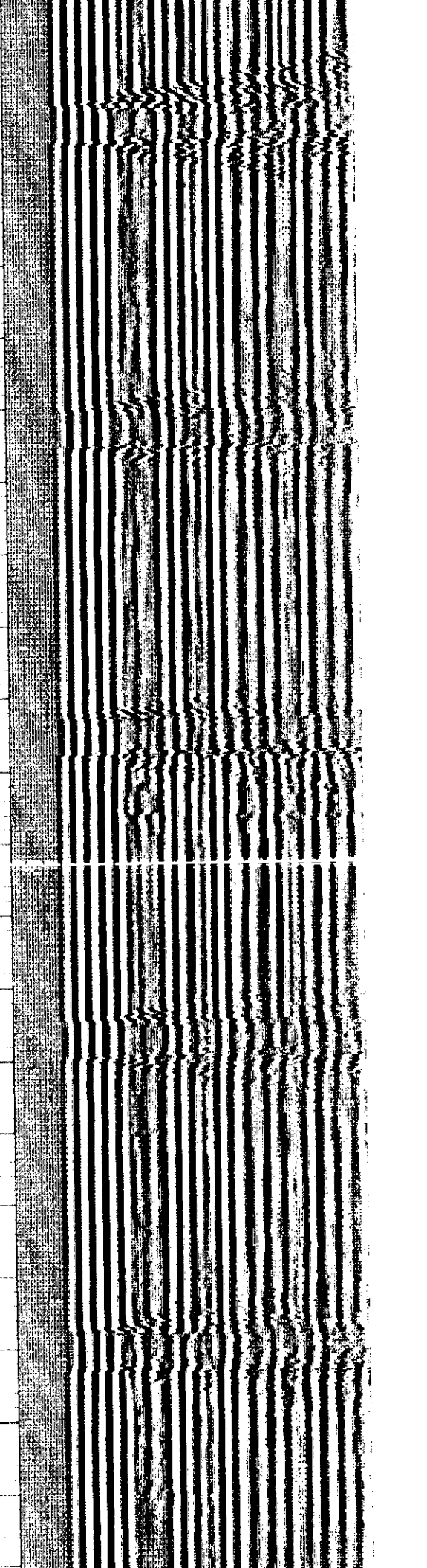


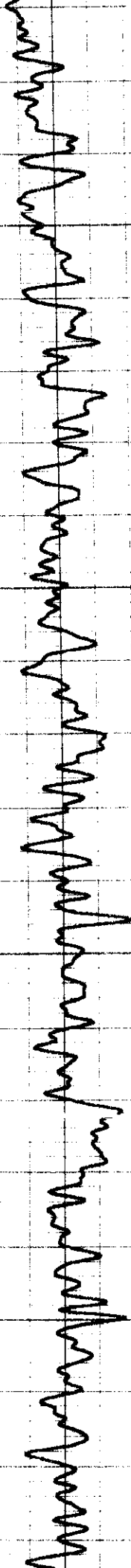


500



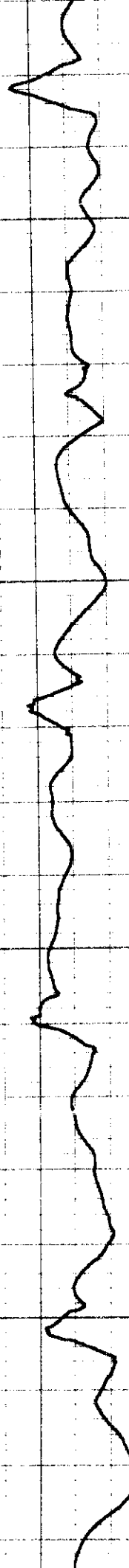
600

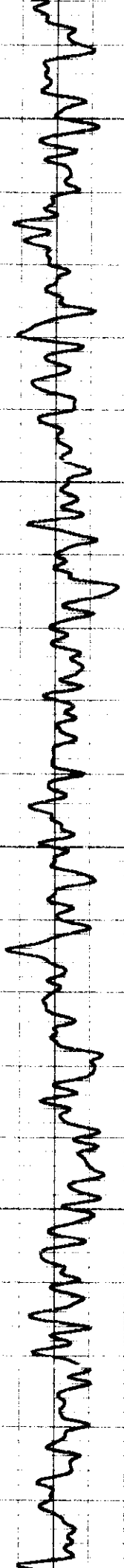




700

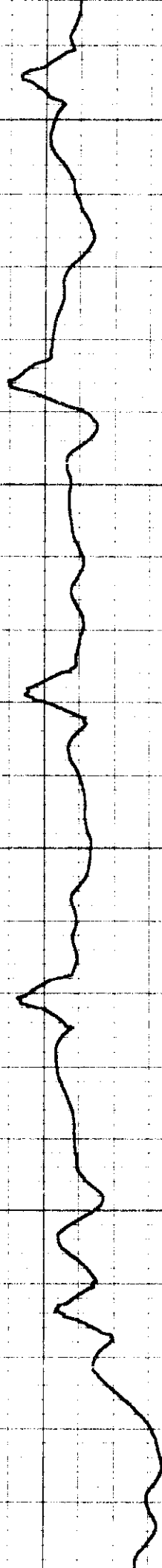
800

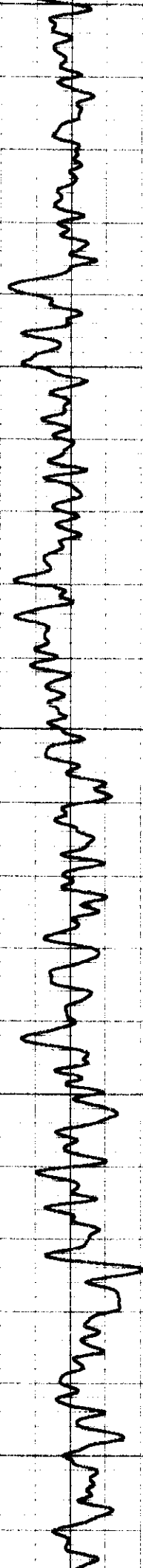




900

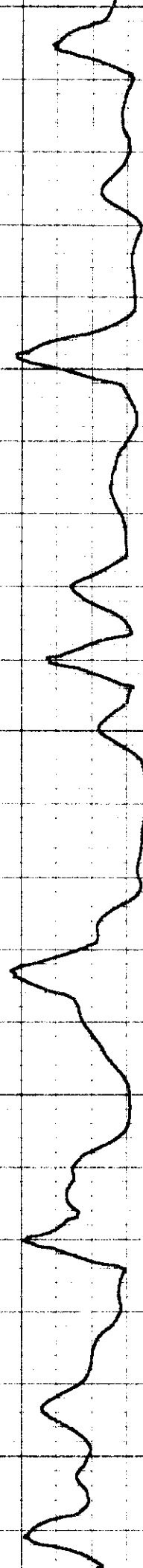
1000

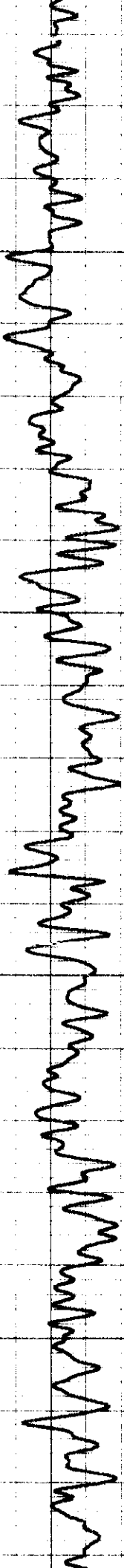




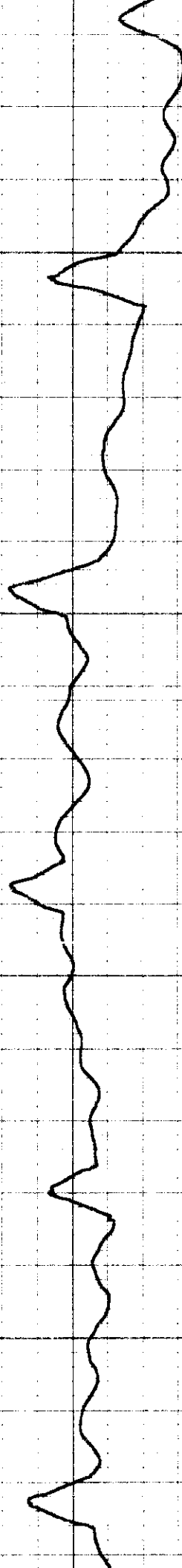
1100

1200

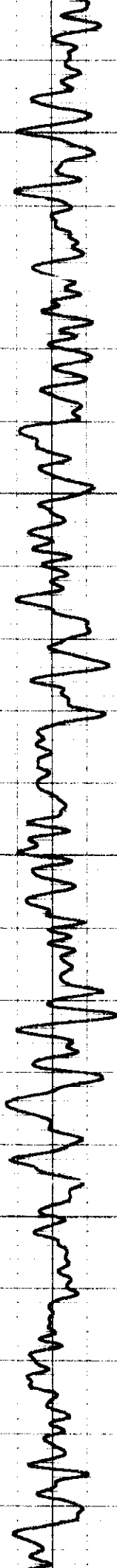




1300

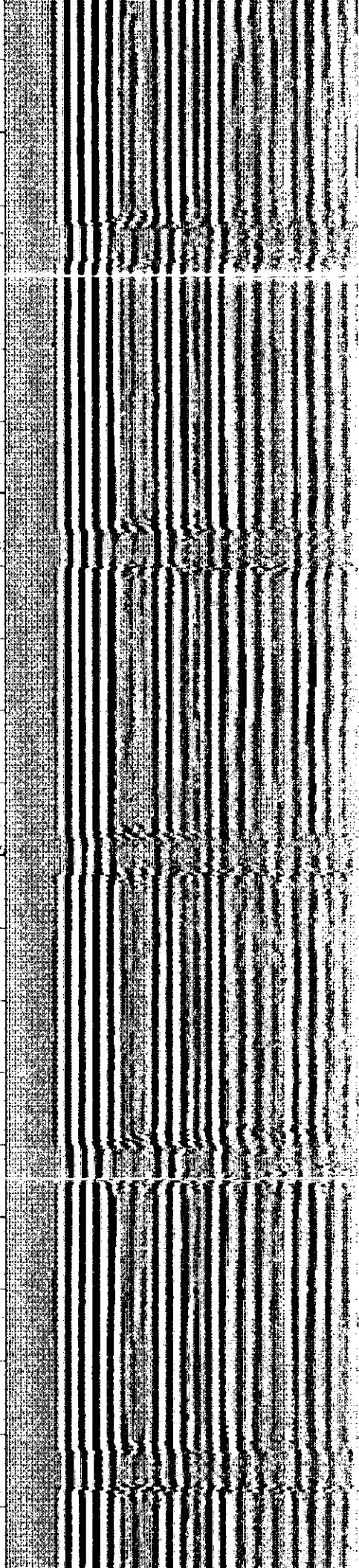
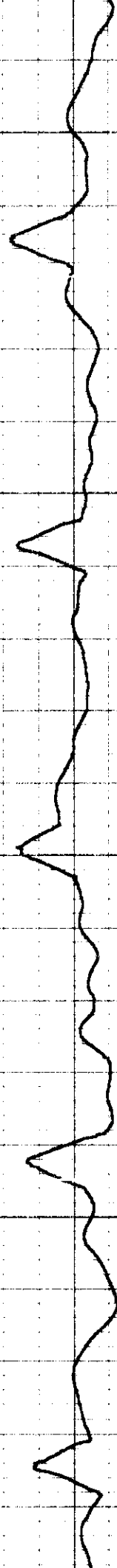


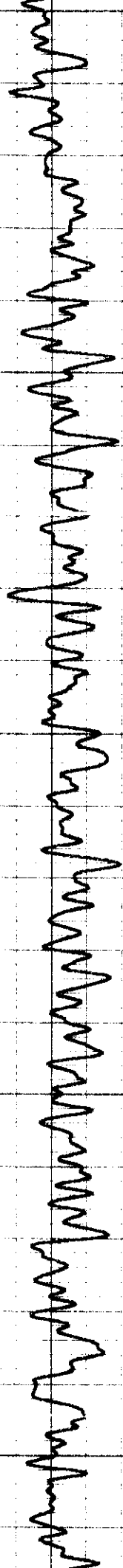
1400



1500

1600

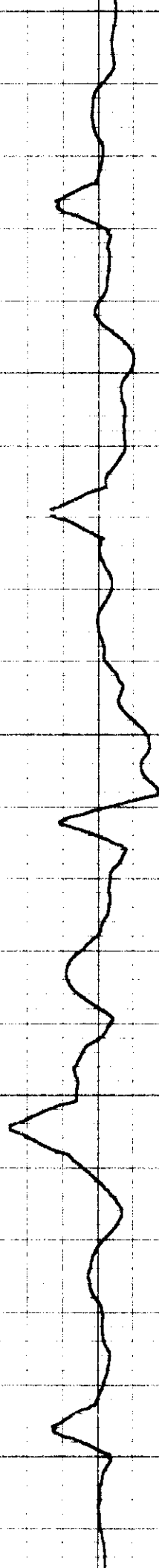


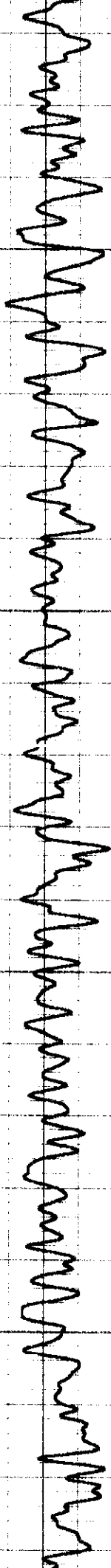


1700

1800

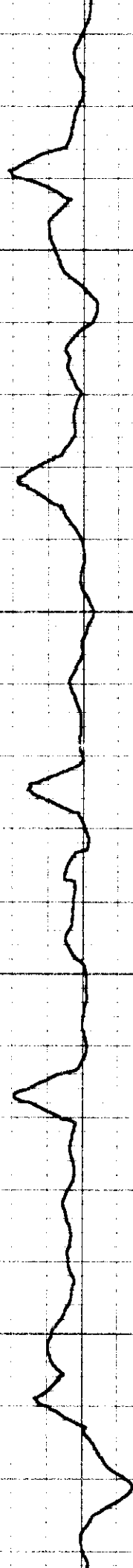
1900

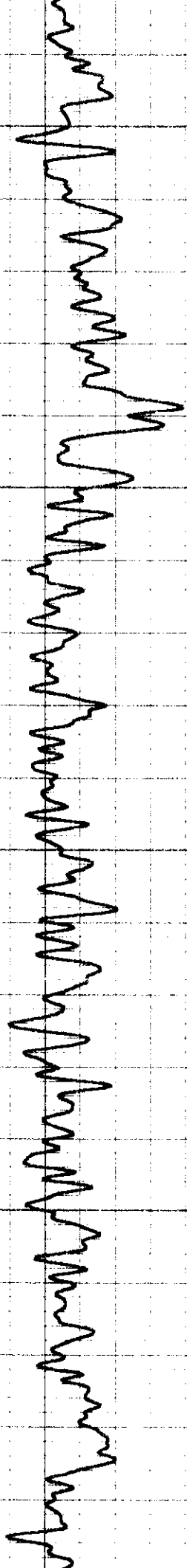




2000

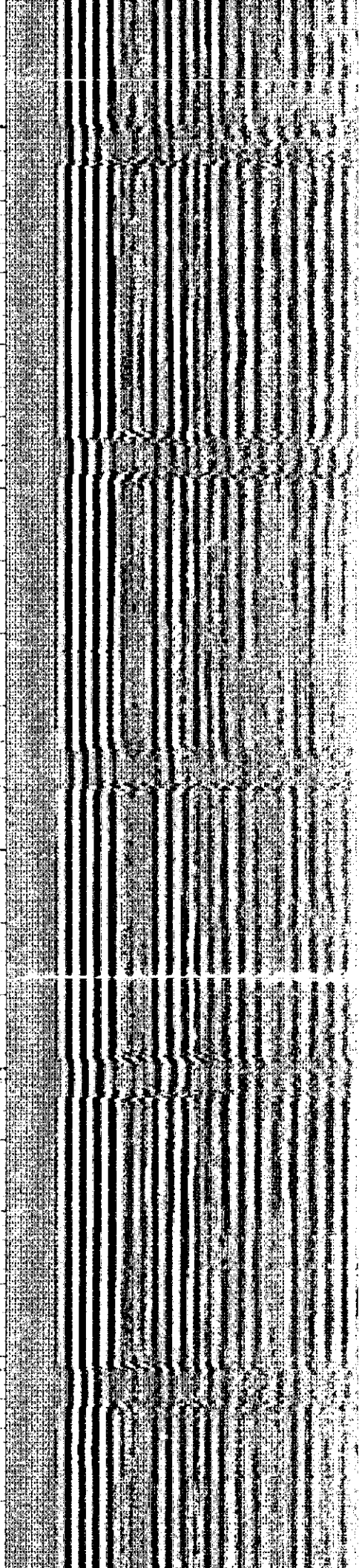
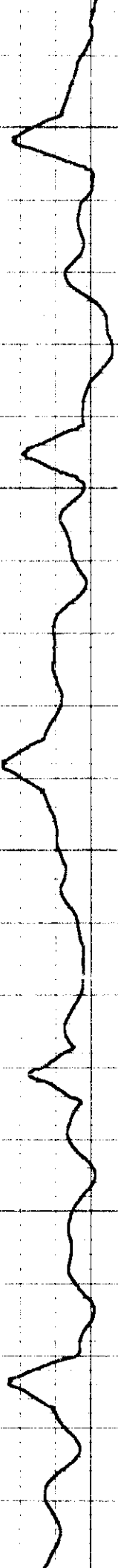
2100

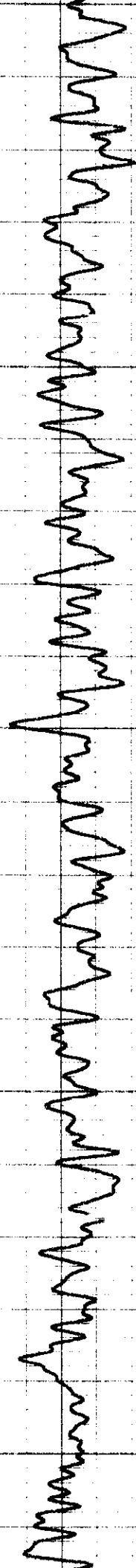




2200

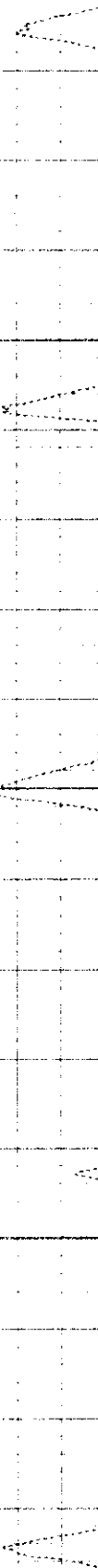
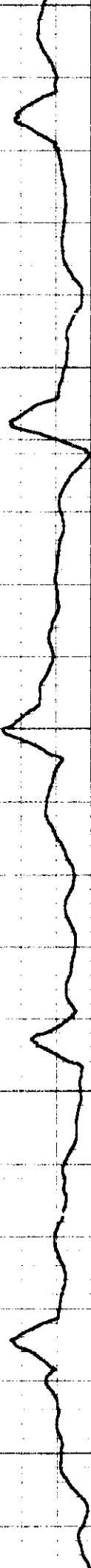
2300

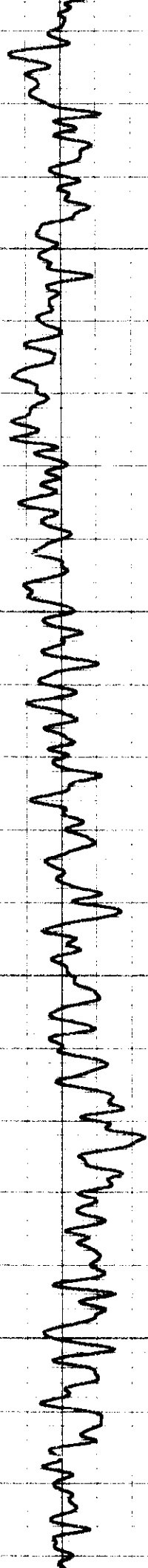




2400

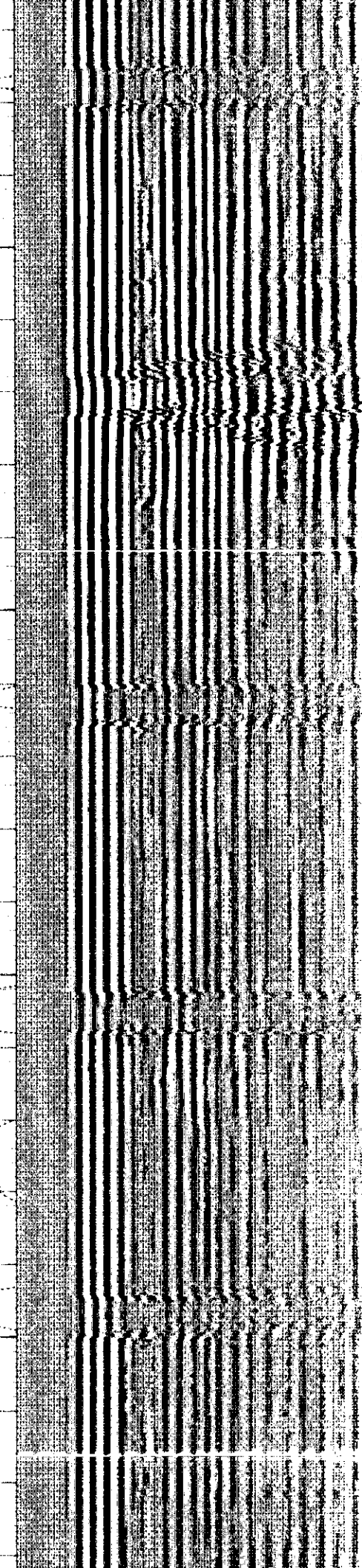
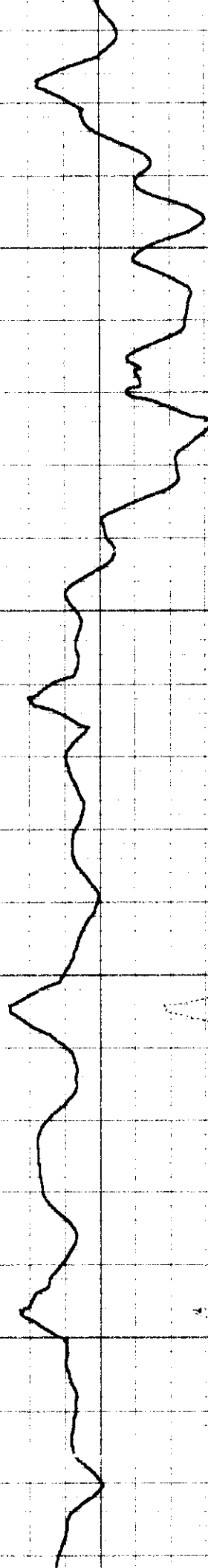
2500

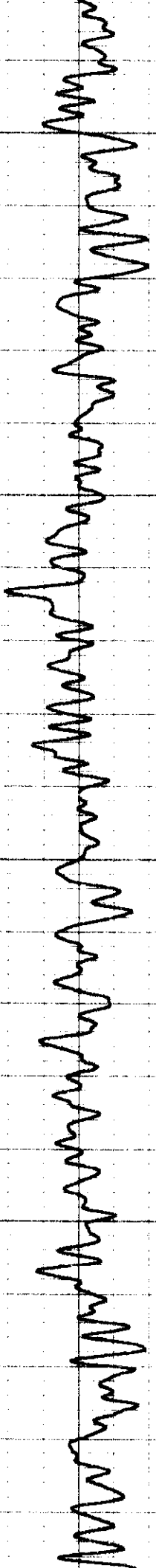




2600

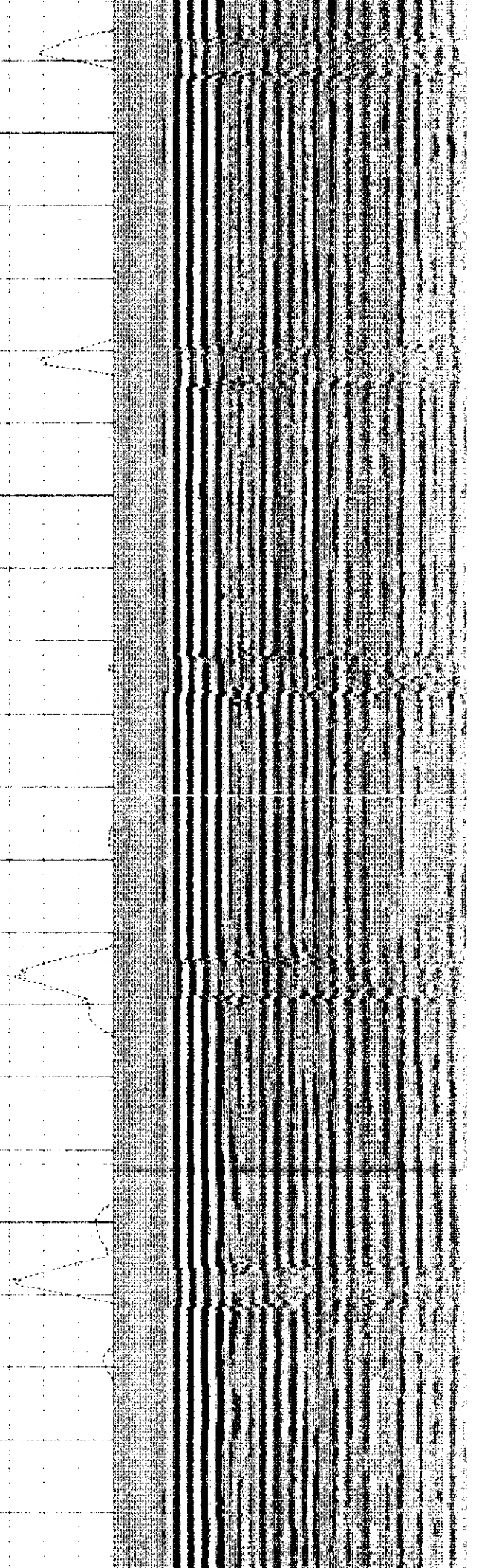
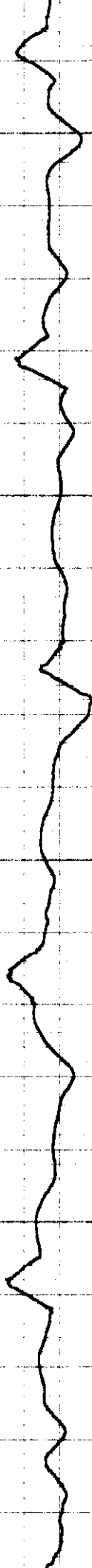
2700

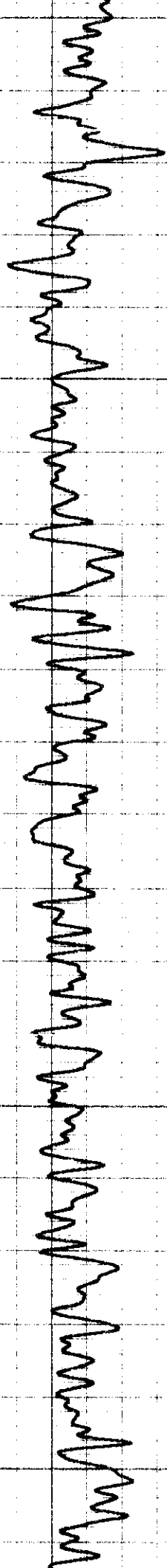




2800

2900

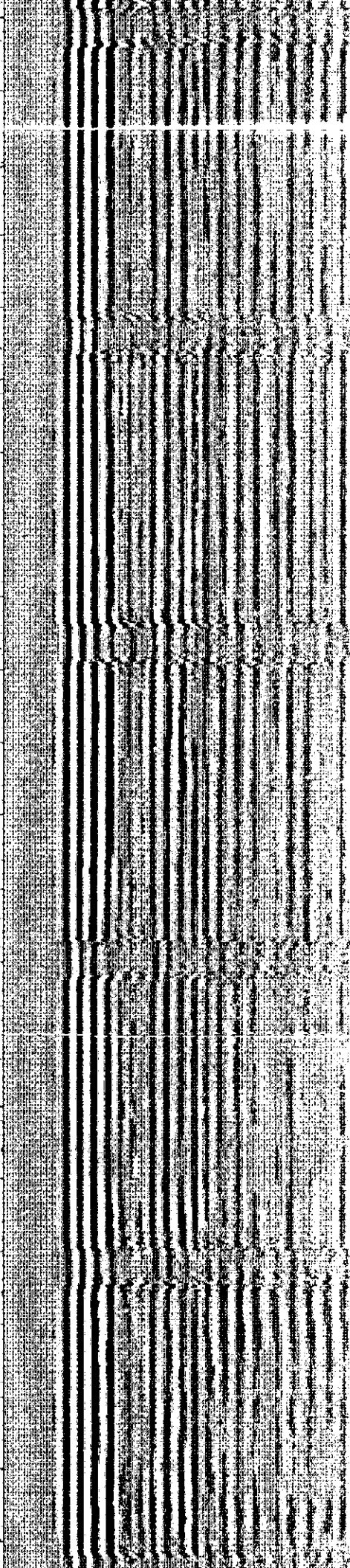
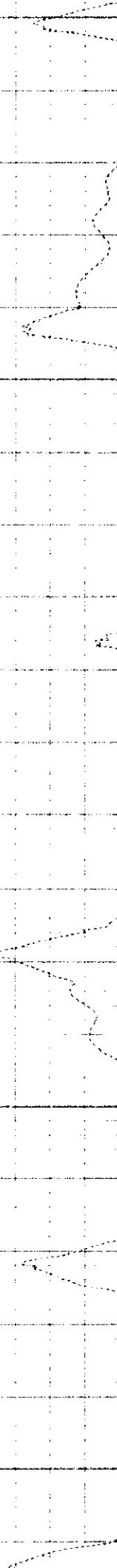
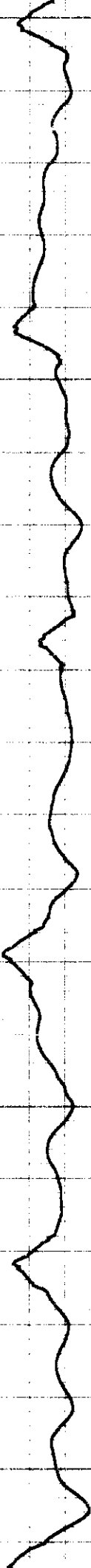


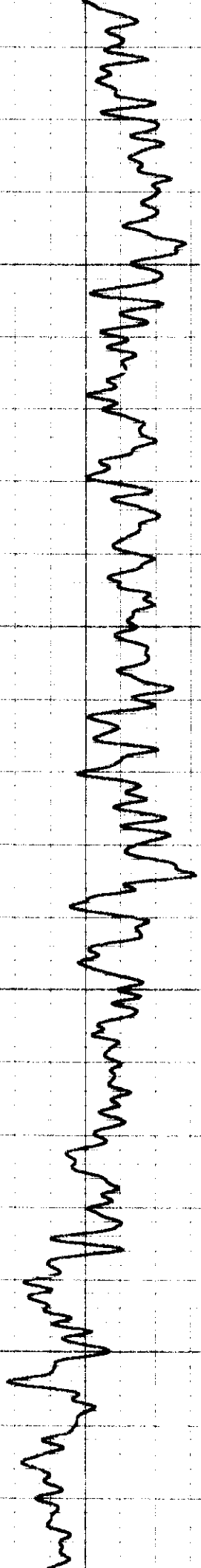


3000

3100

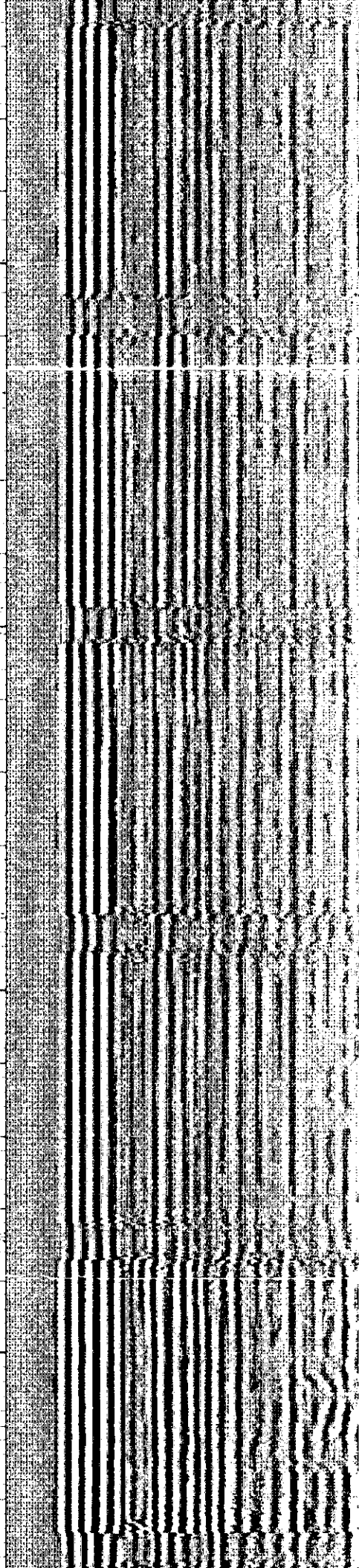
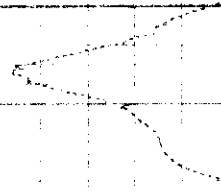
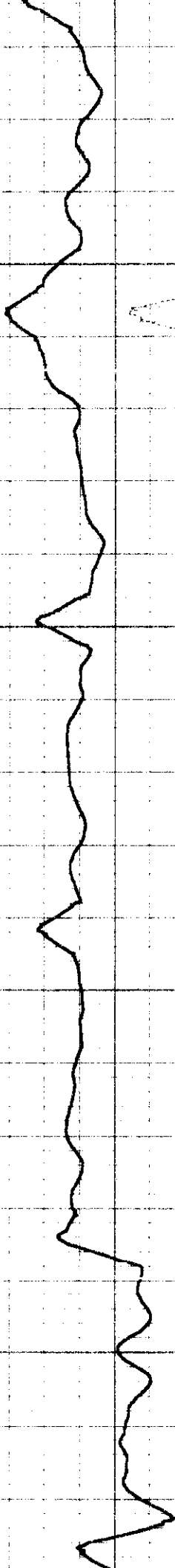
3200

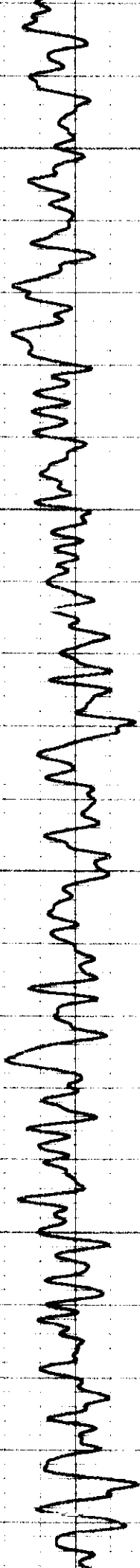




3300

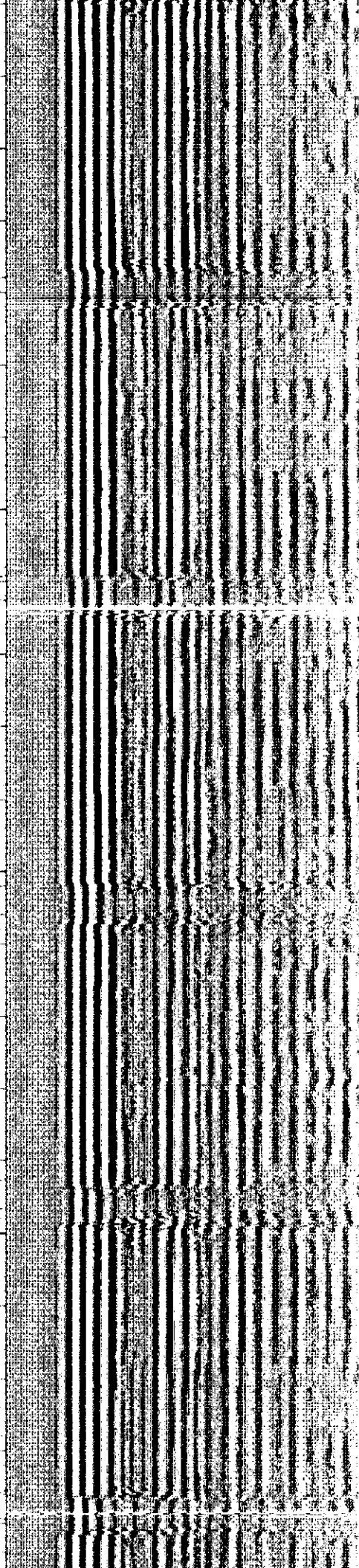
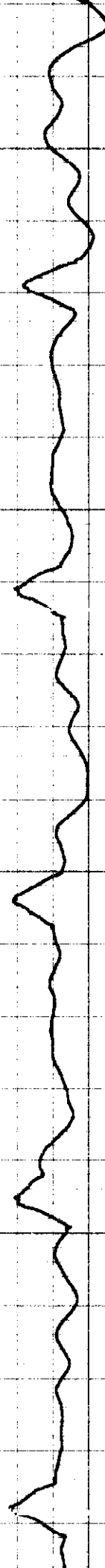
3400

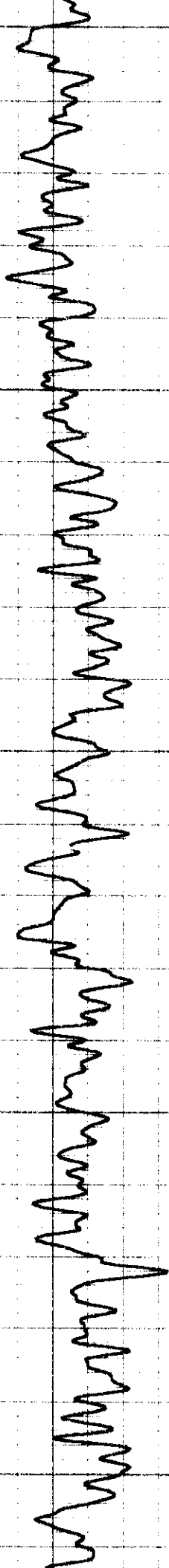




3500

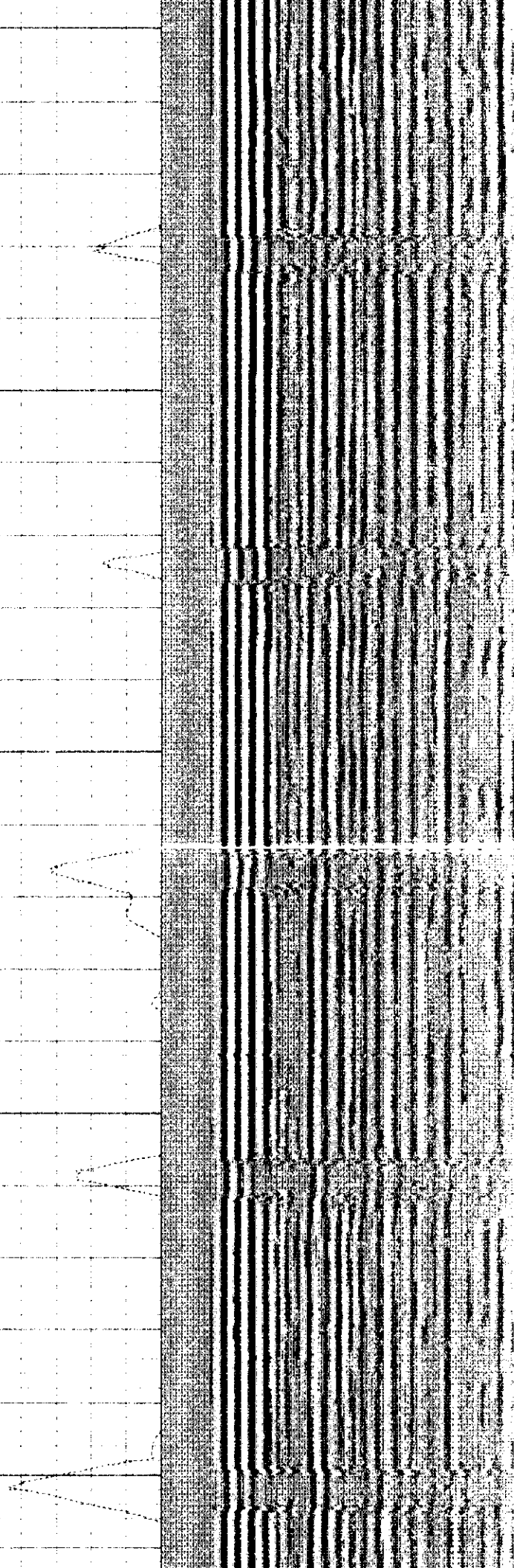
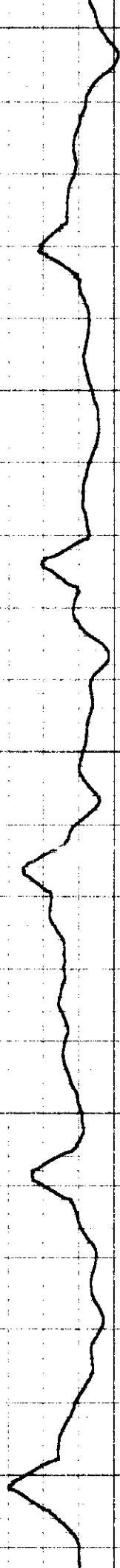
3600

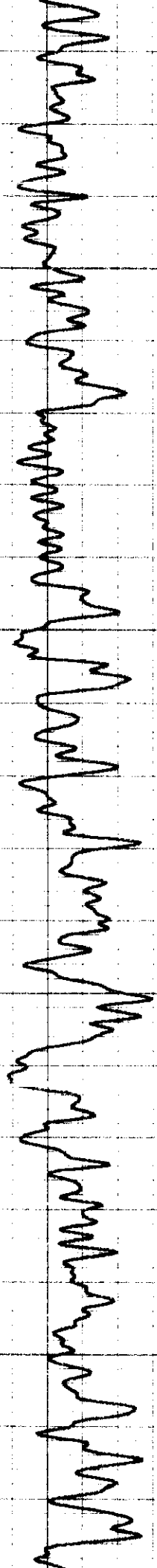




3700

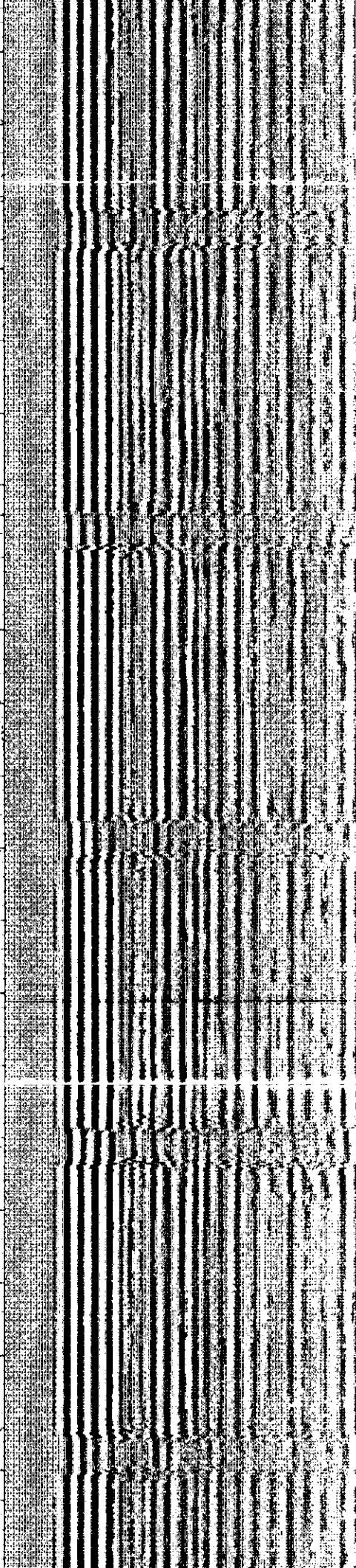
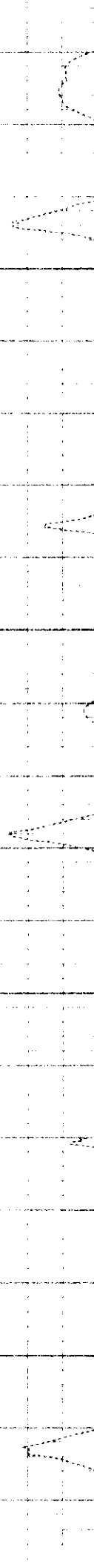
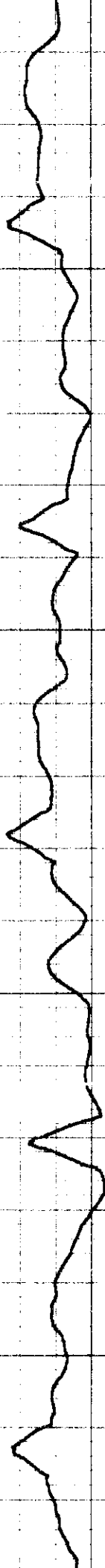
3600

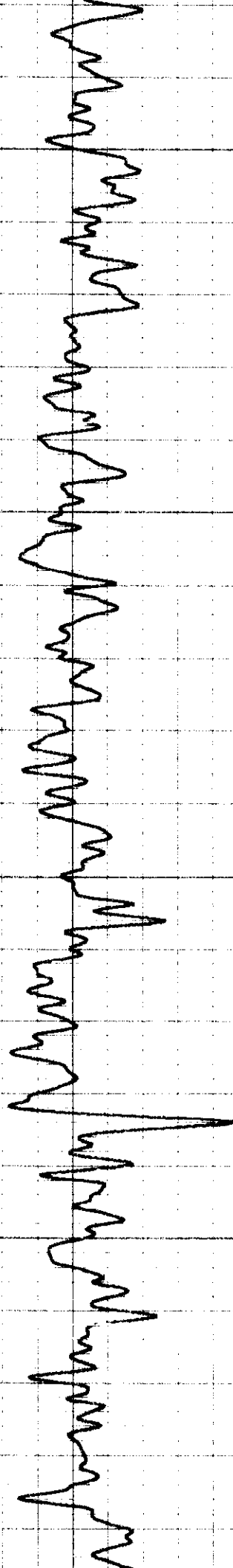




3900

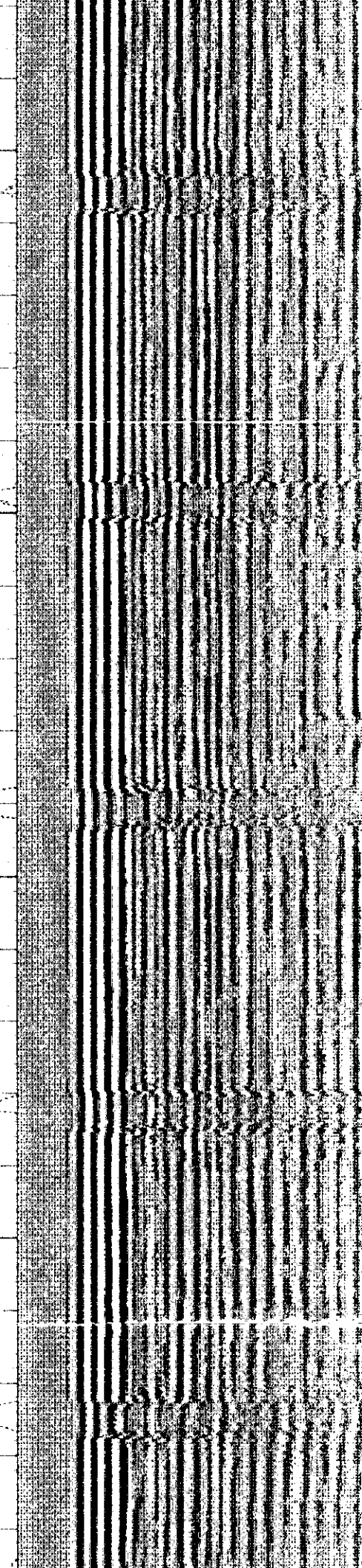
4000

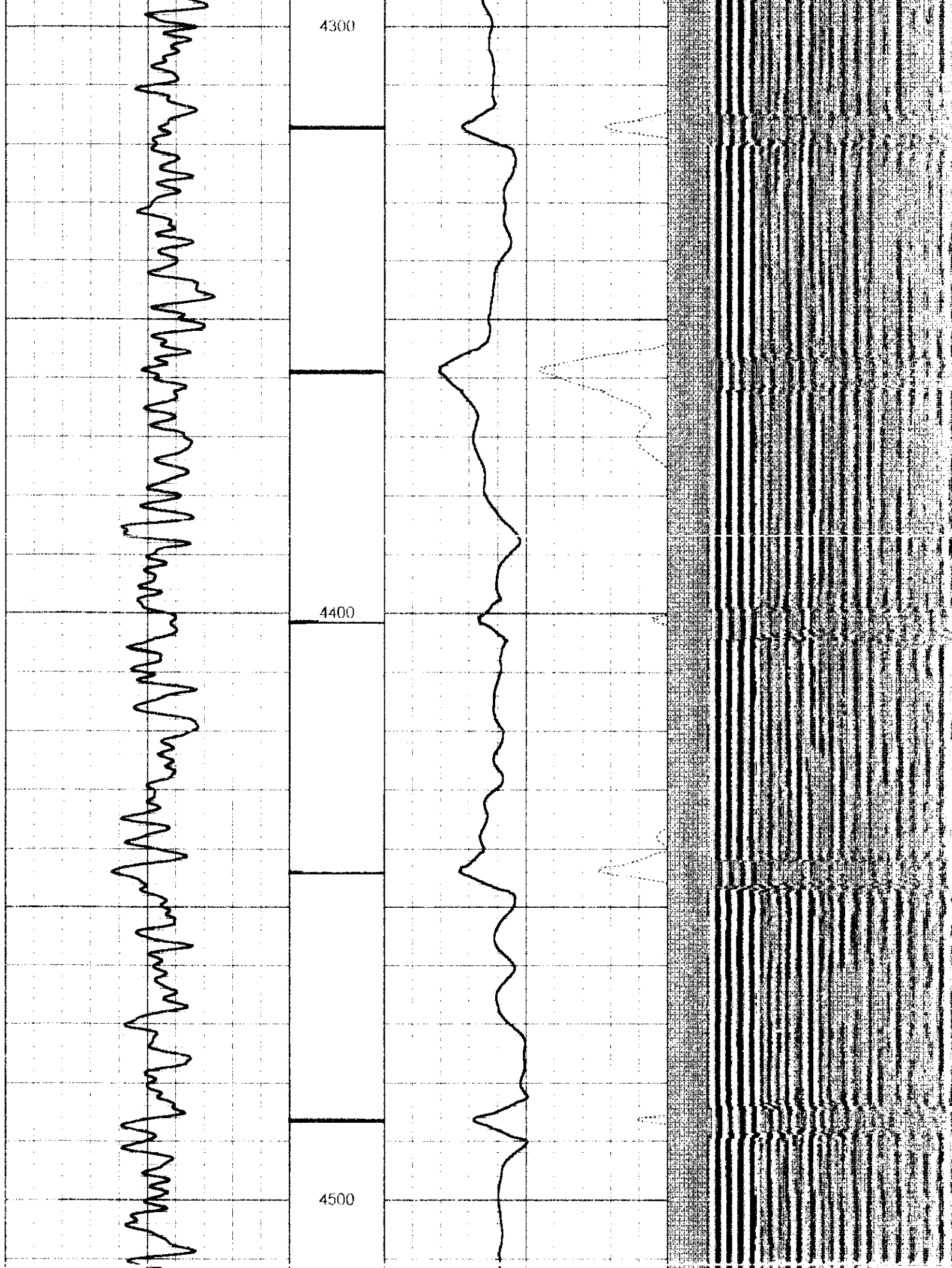


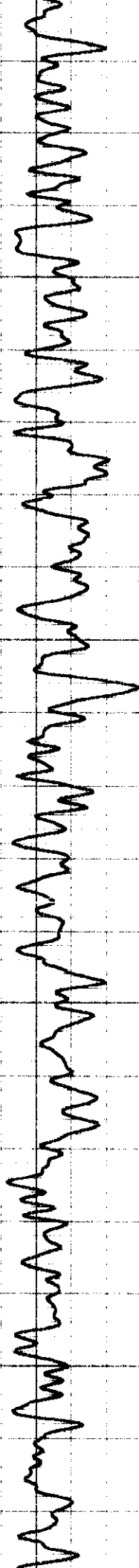


4100

4200

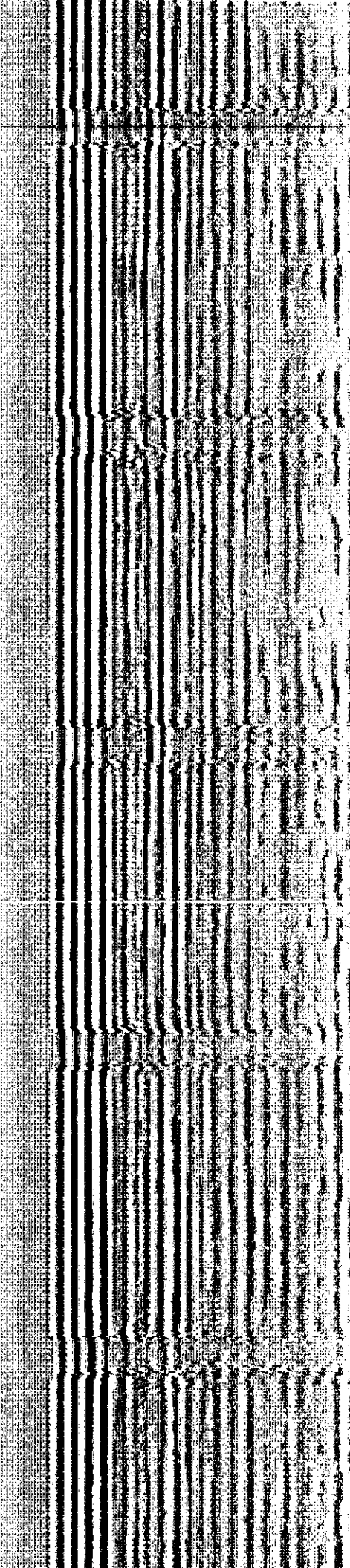
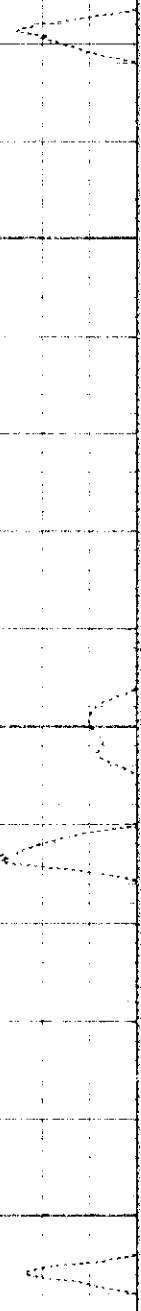


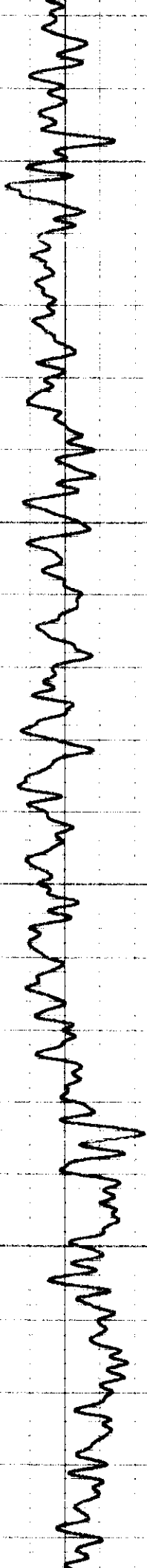




4600

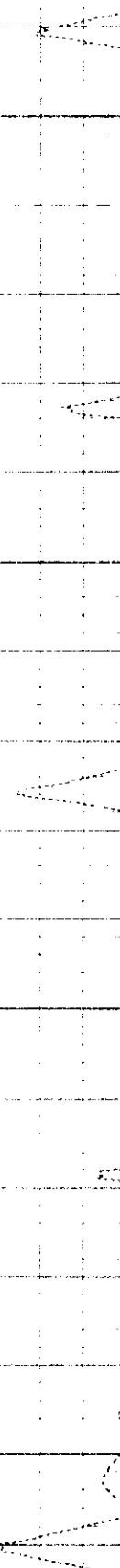
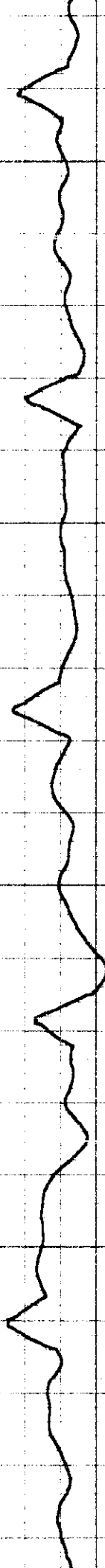
4700

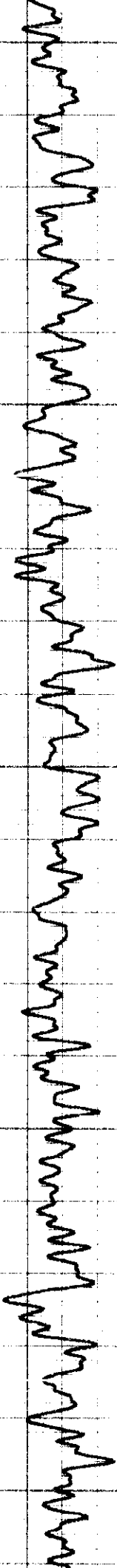




4800

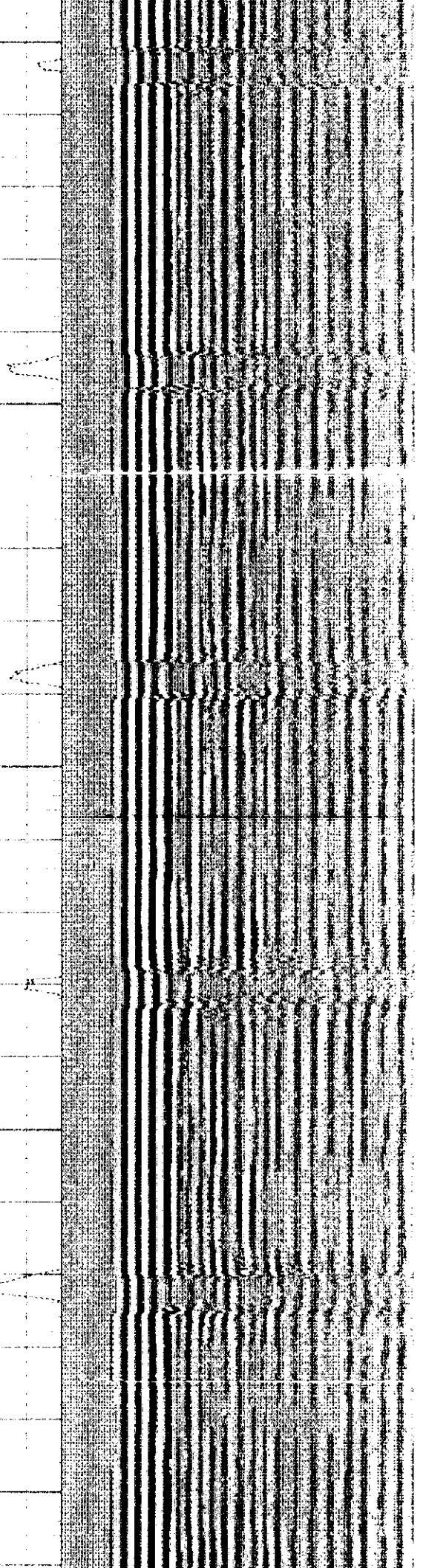
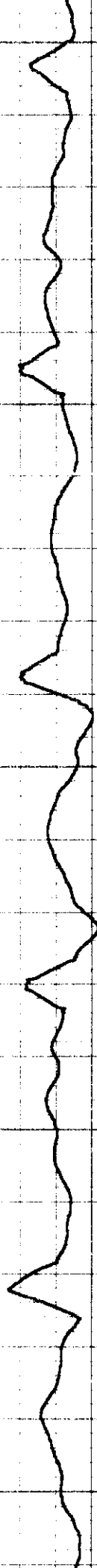
4900

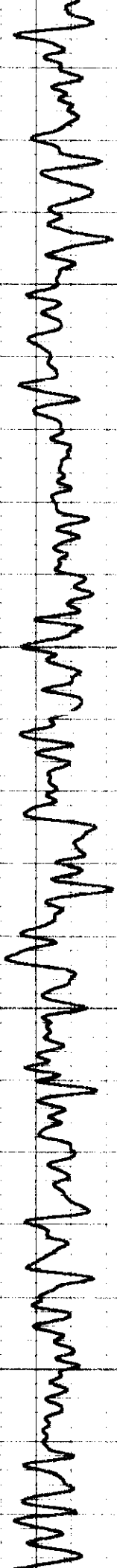




5000

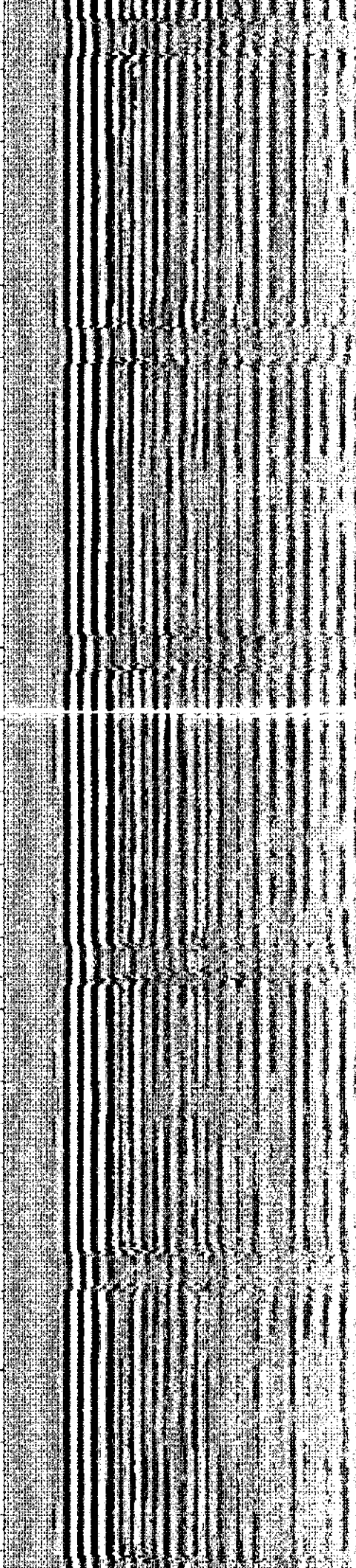
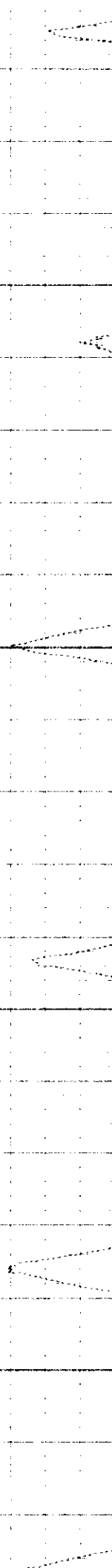
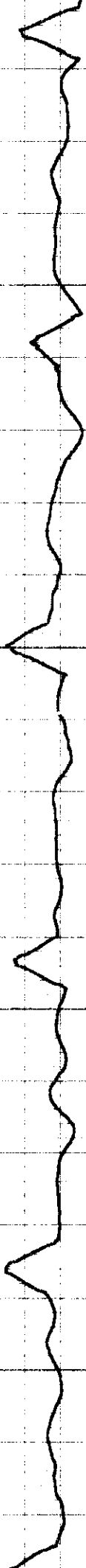
5100

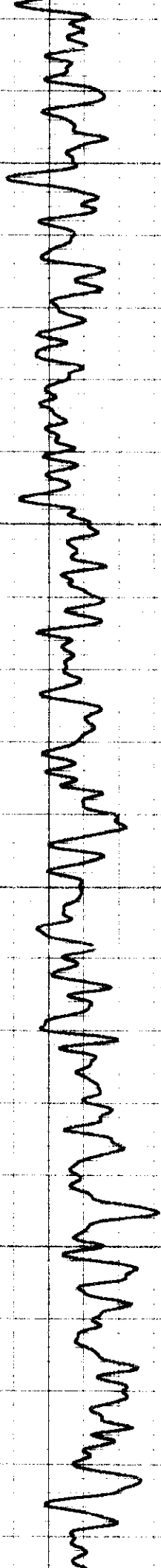




5200

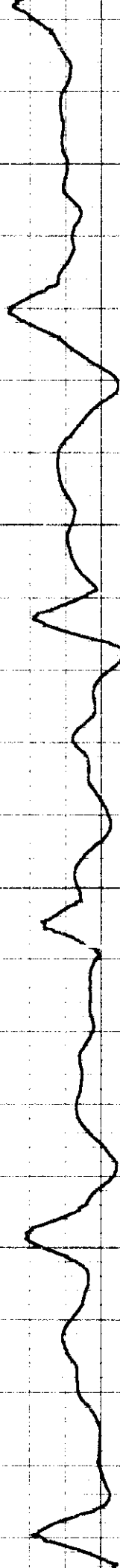
5300

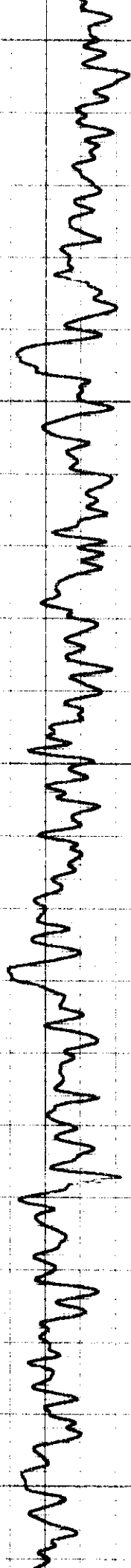




5400

5500

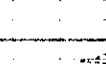
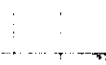
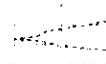
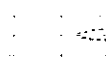
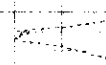
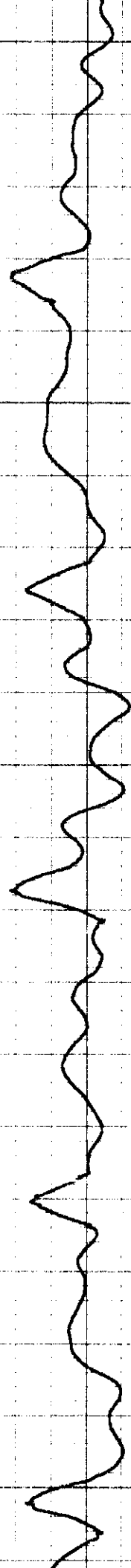


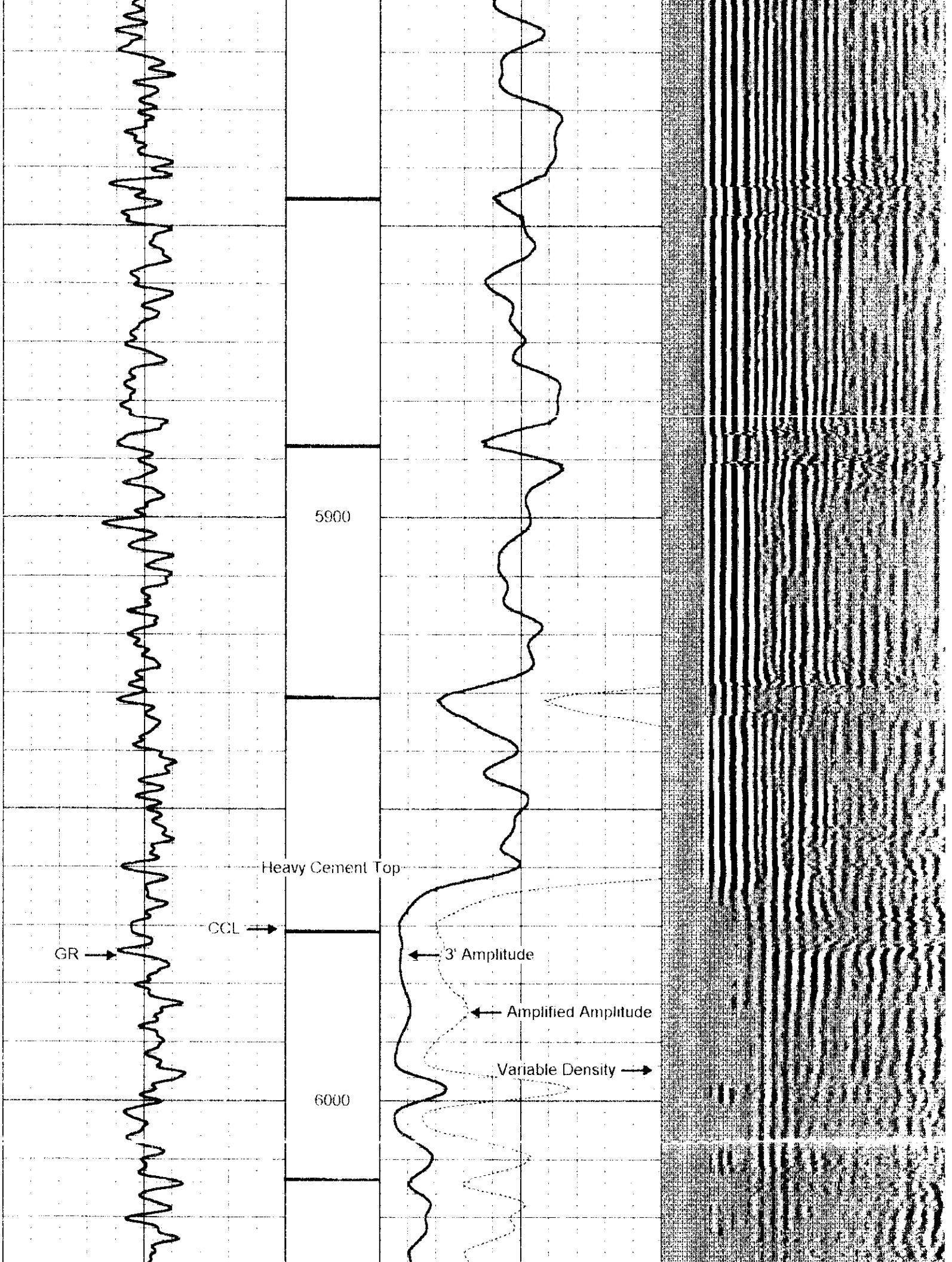


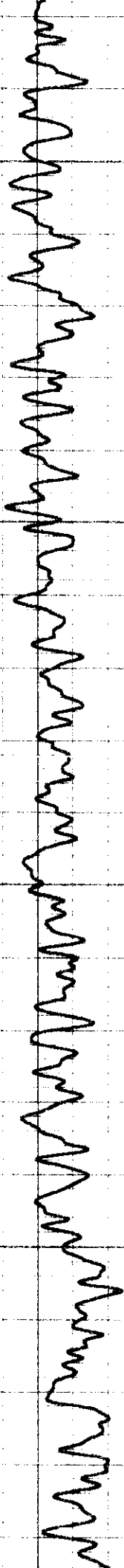
5600

5700

5800







6100

Marker Joint

6200

