

1/9/15
0 FT/24 HRS
DAY 02

WOB 12.0K
PP 2615
RPM 60
SPM 79/79

MD 2586 TVD 2585.87
INC 0.33 AZ 48.92
VS -3.46

MD 2677 TVD 2676.87
INC 0.15 AZ 12.62
VS -3.19

Pierre (2500' MD - 2600' MD)

2500' MD @ 11:00 AM @ 2500' MD
ON 1/9/15 W/BIT #2 8.75" SMITH
SDi519HPX S/N JJ9107 IN @ 1244'
MD

PIERRE BEFORE LOGGING DEPTH

2500' MD- 2600' MD: SS: 80%: PRED
GY - LTKGY - OPQ, MOD CONS, FN
TO MED GRN, SUBANG, W TO
MODY SRTD, CALC CMT, SILTY,
FREE SLTY SH, TRC IMBD PYR,
TRC FREE CALC, TRC IMBD
GLAUC, INTGR POR, NO STN, NO
FLOR, NO O FLOR, NO CUT, NO
RNG

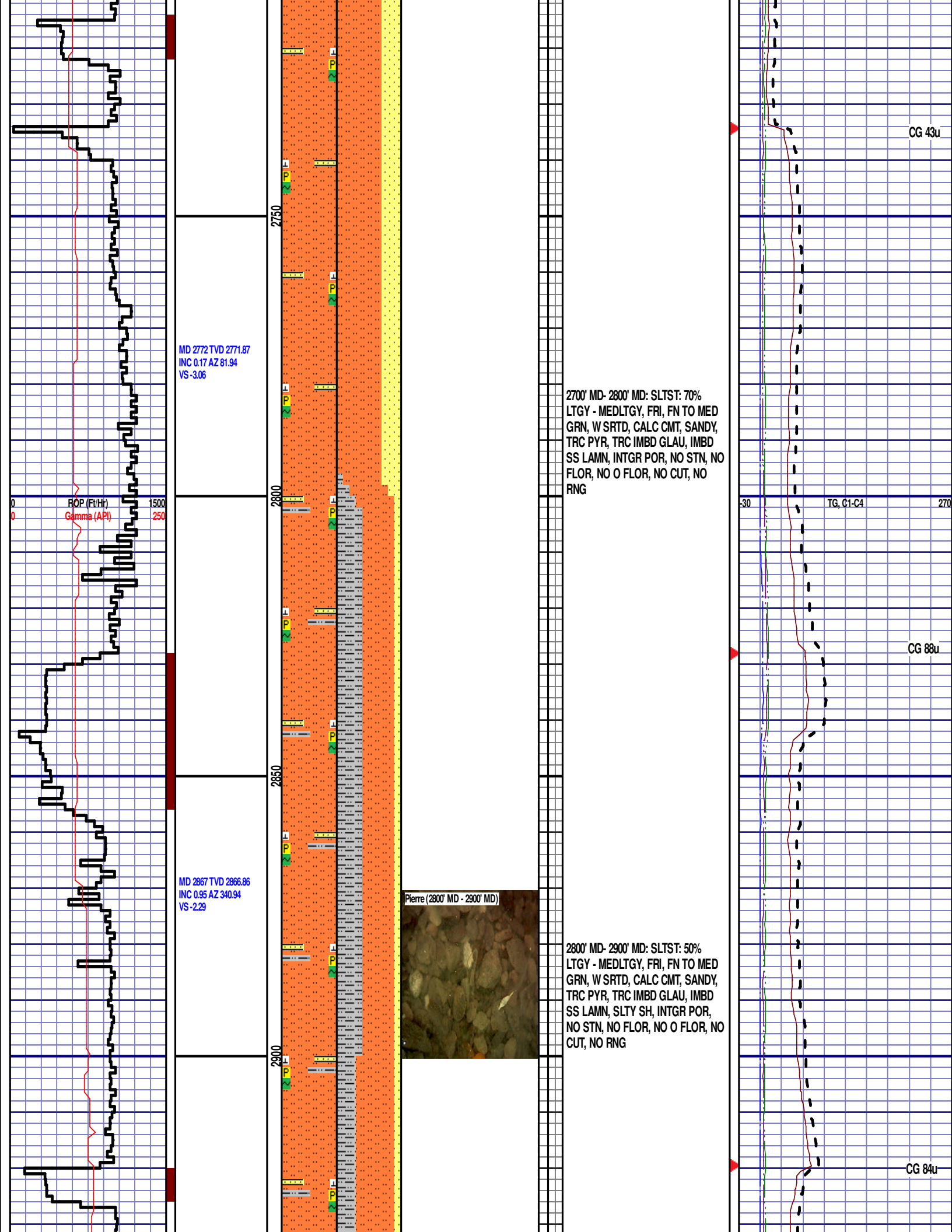
2600' MD- 2700' MD: SS: 60%: PRED
GY - LTKGY - OPQ, MOD CONS, FN
TO MED GRN, SUBANG, W TO
MODY SRTD, CALC CMT, SILTY, TRC
IMBD PYR, TRC FREE CALC, TRC
IMBD GLAUC, INTGR POR, NO STN,
NO FLOR, NO O FLOR, NO CUT, NO
RNG

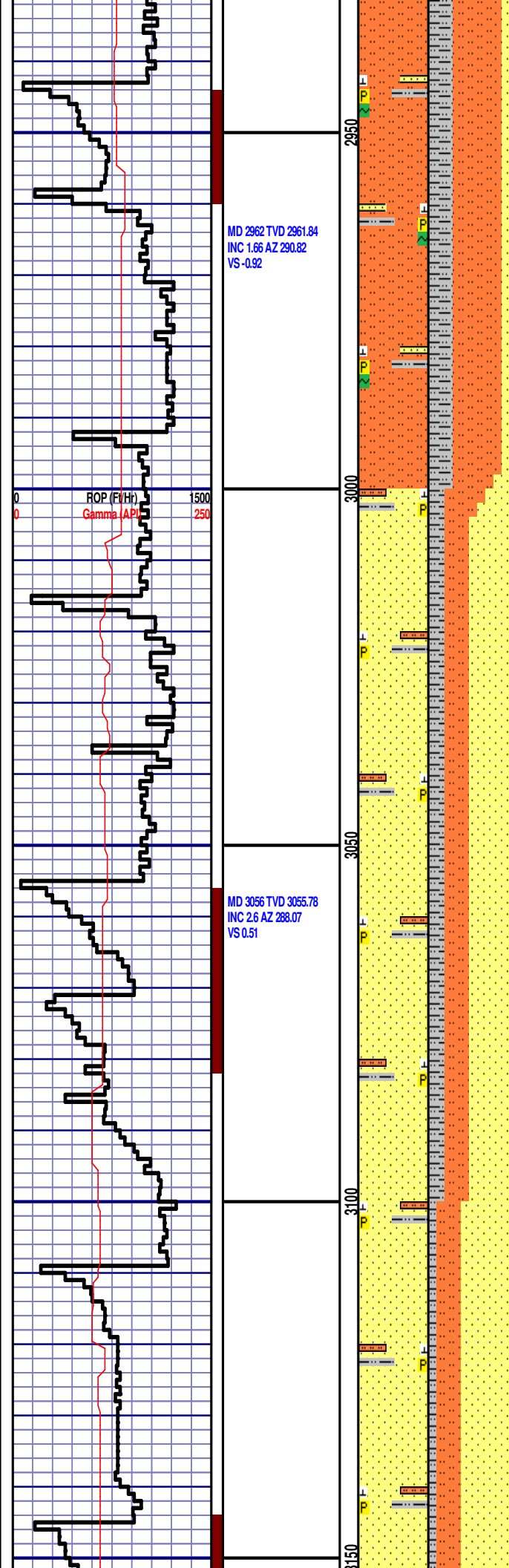
MD 1243'
WT 8.55
VIS 31.0
PH 8.5
FIL 14.2
CL 1100
CAL 40.0
H2O 98.4
OIL 0.0
SOL 1.3
LGS 9.10
GELS 1/23
PV 2.0
YP 2.0
CAKE 1/0

CG 85u

TG, C1-C4

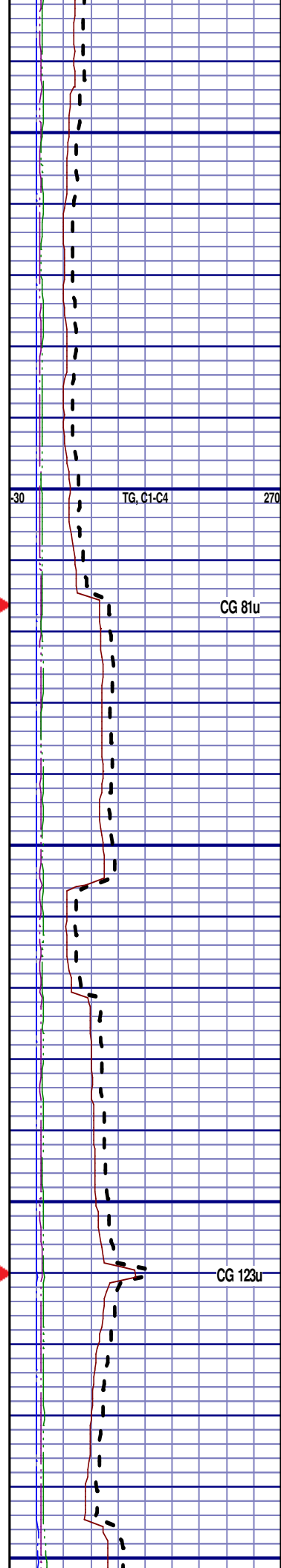
CG 30u





2900' MD- 3000' MD: SLTST: 60%
LTGY - MEDLTGY, FRI, FN TO MED
GRN, W SR TD, CALC CMT, SANDY,
TRC PYR, TRC IMBD GLAU, IMBD
SS LAMN, SLTY SH, INTGR POR,
NO STN, NO FLOR, NO O FLOR, NO
CUT, NO RNG

3000' MD- 3100' MD: SS: 50% PRED
WHT - LTGY - OPQ, FRI, FN GRN,
WSR TD, CALC CMT, FREE SLTST,
SLTY SH, IMBD PYR, INTGR POR,
NO STN, NO MIN FLOR, NO O
FLOR, NO CUT, NO RNG



MD 3151 TVD 3150.54
INC 5.29 AZ 291
VS 3.29

ROP (Ft/hr)
Sample (RPI)

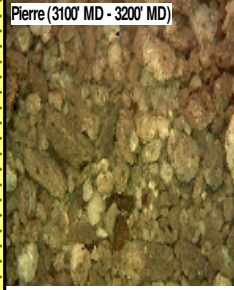
1500
250

MD 3245 TVD 3244.01
INC 6.92 AZ 301.16
VS 8.54

MD 3340 TVD 3338.17
INC 8.29 AZ 294.89
VS 15.35

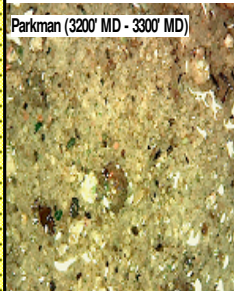
3200
3250
3300
3350

Pierre (3100' MD - 3200' MD)



3100' MD- 3200' MD: SS: 60% PRED
WHT - LTGY - OPQ, FRI, FN GRN,
WSRTD, CALC CMT, FREE SLTST,
SLTY SH, IMBD PYR, INTGR POR,
NO STN, NO MIN FLOR, NO O
FLOR, NO CUT, NO RNG

Parkman (3200' MD - 3300' MD)



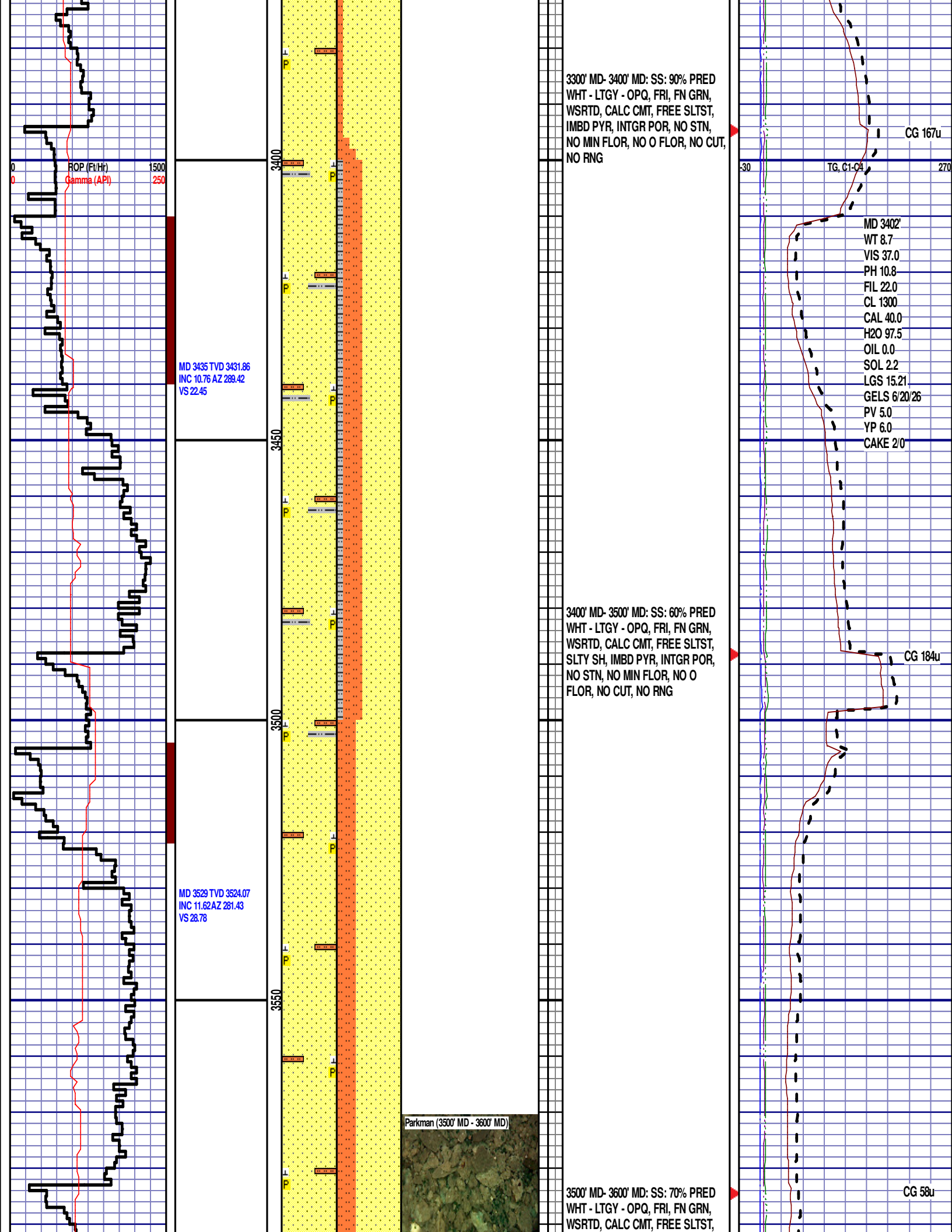
PARKMAN
3288' MD 3286' TVD
3200' MD- 3300' MD: SS: 90% PRED
WHT - LTGY - OPQ, FRI, FN GRN,
WSRTD, CALC CMT, FREE SLTST,
IMBD PYR, INTGR POR, NO STN,
NO MIN FLOR, NO O FLOR, NO CUT,
NO RNG

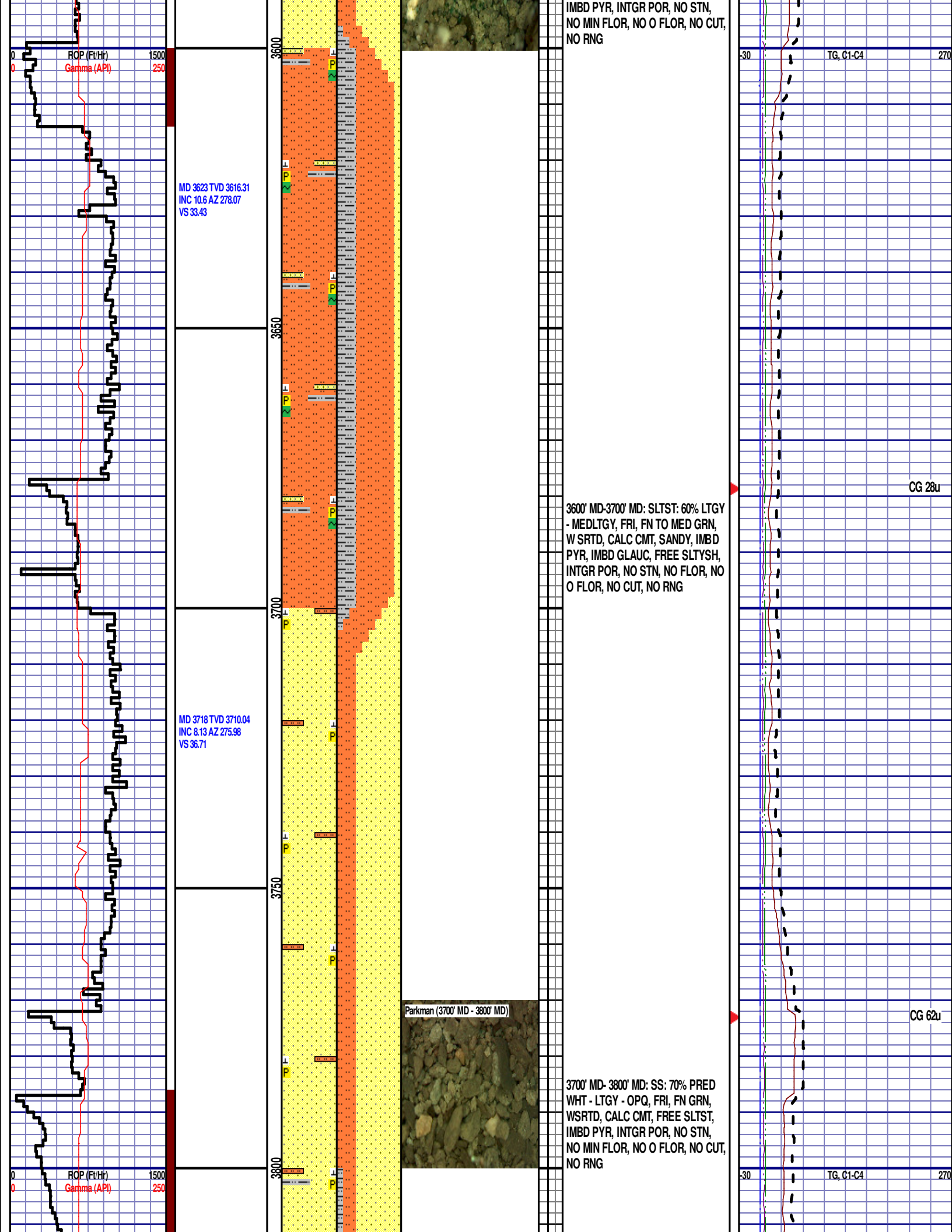
30

VTG, C1-C4

CG 104u

CG 123u





MD 3812 TVD 3802.92
INC 9.57 AZ 276.74
VS 39.59

SUSSEX

3822' MD 3812' TVD

CG 64u

Sussex (3800' MD - 3900' MD)

3800' MD- 3900' MD: SS: 70% PRED
WHT - LTGY - OPQ, FRI, FN GRN,
WSRTD, CALC CMT, FREE SLTST,
SLTY SH, IMBD PYR, INTGR POR,
NO STN, NO MIN FLOR, NO O
FLOR, NO CUT, NO RNG

MD 3907 TVD 3896.4
INC 10.9 AZ 278.13
VS 43.26

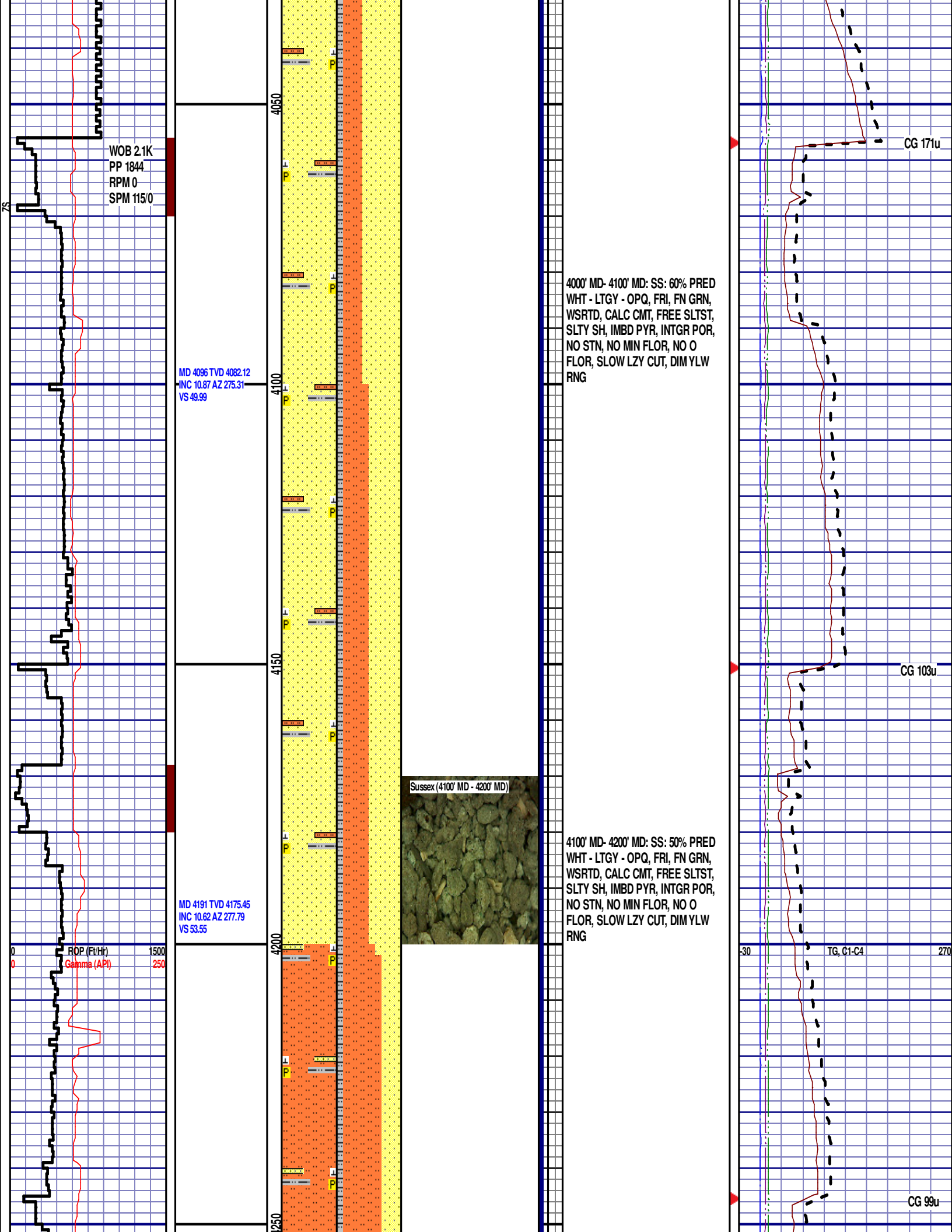
CG 83u

3900' MD- 4000' MD: SS: 60% PRED
WHT - LTGY - OPQ, FRI, FN GRN,
WSRTD, CALC CMT, FREE SLTST,
SLTY SH, IMBD PYR, INTGR POR,
NO STN, NO MIN FLOR, NO O
FLOR, NO CUT, NO RNG

ROP (F₈₀)
Gamma (API)

MD 4001 TVD 3888.77
INC 10.51 AZ 275.23
VS 46.82

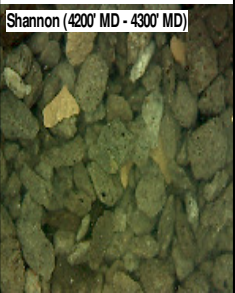
-30 TG, C1-C4 270



SHANNON

4254' MD 4237' TVD

Shannon (4200' MD - 4300' MD)



4200' MD-4300' MD: SLTST: 60% LTGY
- MEDLTGY, FRI, FN TO MED GRN,
W SRTD, CALC CMT, SANDY, IMBD
PYR, SLTY SH, INTGR POR, NO
STN, NO FLOR, NO O FLOR, SLOW
LZY CUT, DIMYLW RNG

MD 4285 TVD 4267.96
INC 9.79 AZ 274.1
VS 56.76

MD 4380 TVD 4361.82
INC 8.08 AZ 261.77
VS 57.68

ROP (Ft/Hr)
Gamma (API)

1500
250

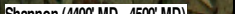
CG 81u

4300' MD-4400' MD: SLTST: 70% LTGY
- MEDLTGY, FRI, FN TO MED GRN,
W SRTD, CALC CMT, SANDY, IMBD
PYR, SLTY SH, INTGR POR, NO
STN, NO FLOR, NO O FLOR, SLOW
LZY CUT, DIMYLW RNG

TG, C1-C4

CG 97u

Shannon (4400' MD - 4500' MD)



MD 4475 TVD 4455.95
INC 7.45 AZ 263.12
VS 57.12

MD 4569 TVD 4549.24
INC 6.67 AZ 272.68
VS 57.66

MD 4664 TVD 4643.69
INC 5.63 AZ 288.04
VS 60.24

WOB 22.3K
PP 2785
RPM 60

4400' MD-4500' MD: SLTST: 70% LTGY
- MEDLTGY, FRI, FN TO MED GRN,
W SRTD, CALC CMT, SANDY, IMBD
PYR, SLTY SH, INTGR POR, NO
STN, NO FLOR, NO O FLOR, SLOW
LZY CUT, DIMYLR RNG

TEEPEE BUTTES

4559' MD 4550' TVD

4500' MD-4600' MD: SLTST: 70% LTGY
- MEDLTGY, FRI, FN TO MED GRN,
W SRTD, CALC CMT, SANDY, IMBD
PYR, SLTY SH, INTGR POR, NO
STN, NO FLOR, NO O FLOR, SLOW
LZY CUT, DIMYLR RNG

4600' MD-4700' MD: SLTST: 70% LTGY
- MEDLTGY, FRI, FN TO MED GRN,
W SRTD, CALC CMT, IMBD PYR.



CG 124u

CG 137u

30 TG, C1-C4 270

SPM 115/0

MD 4759 TVD 4738.39
INC 3.63 AZ 316.96
VS 64.44

ROP (Ft/Hr)
Gamma (API)

MD 4853 TVD 4832.29
INC 1.52 AZ 341.8
VS 68

Teepee Buttes (4800' MD - 4900' MD)

SLTY SH, INTGR POR, NO STN, NO
FLOR, NO O FLOR, SLOW LZY CUT,
DIM YLW RNG

4700' MD-4800' MD: SLTST: 60% LTGY
- MEDLTGY, FRI, FN TO MED GRN,
W SRTD, CALC CMT, IMBD PYR,
SLTY SH, INTGR POR, NO STN, NO
FLOR, NO O FLOR, SLOW LZY CUT,
DIM YLW RNG

4800' MD-4900' MD: SLTYSH: 60%
LTGY - MEDGY, PRED SUBBLKY TO
SUBSPLT, SLTY TO F TXT, FREE
CALC, IMBD PYR, FREE SLTST, NO
STN, NO FLOR, NO O FLOR, SLOW
LZY CUT, DIM YLW RNG

CG 182u

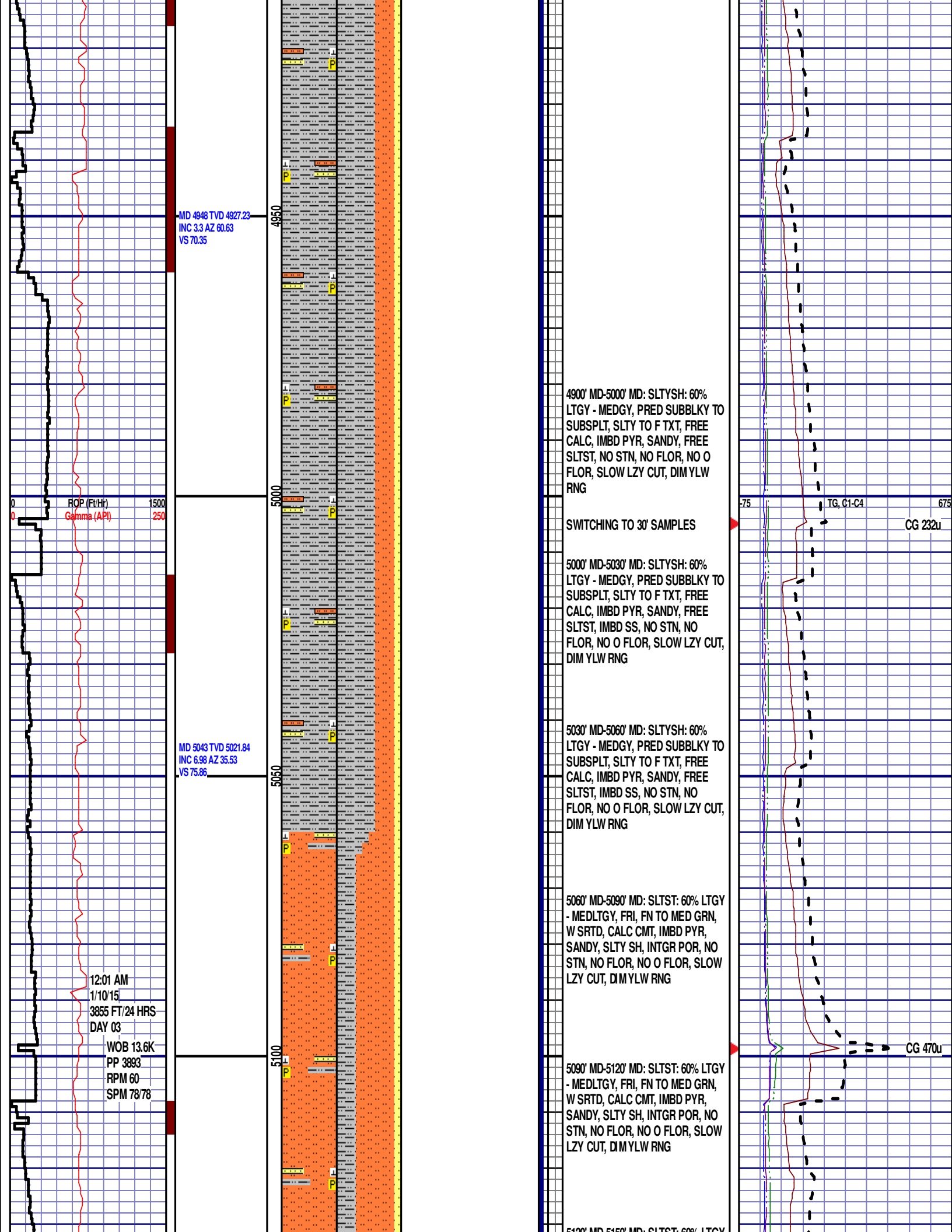
CG 203u

Scale Change

TG, C1-C4

GAS SCALE: -75u TO 675u
(75 UNITS/DIVISION)

CG 241u



MD 4948 TVD 4927.23
INC 3.3 AZ 60.63
VS 70.35

ROP (Ft/Hr)
Gamma (API)

MD 5043 TVD 5021.84
INC 6.98 AZ 35.53
VS 75.86

12:01 AM
1/10/15
3855 FT/24 HRS
DAY 03

WOB 13.6K
PP 3893
RPM 60
SPM 78/78

4900' MD-5000' MD: SLTYSH: 60%
LTGY - MEDGY, PRED SUBBLKY TO
SUBSPLT, SLTY TO F TXT, FREE
CALC, IMBD PYR, SANDY, FREE
SLTST, NO STN, NO FLOR, NO O
FLOR, SLOW LZY CUT, DIM YLW
RNG

SWITCHING TO 30' SAMPLES

5000' MD-5030' MD: SLTYSH: 60%
LTGY - MEDGY, PRED SUBBLKY TO
SUBSPLT, SLTY TO F TXT, FREE
CALC, IMBD PYR, SANDY, FREE
SLTST, IMBD SS, NO STN, NO
FLOR, NO O FLOR, SLOW LZY CUT,
DIM YLW RNG

5030' MD-5060' MD: SLTYSH: 60%
LTGY - MEDGY, PRED SUBBLKY TO
SUBSPLT, SLTY TO F TXT, FREE
CALC, IMBD PYR, SANDY, FREE
SLTST, IMBD SS, NO STN, NO
FLOR, NO O FLOR, SLOW LZY CUT,
DIM YLW RNG

5060' MD-5090' MD: SLTST: 60% LTGY
- MEDLTGY, FRI, FN TO MED GRN,
W SRD, CALC CMT, IMBD PYR,
SANDY, SLTY SH, INTGR POR, NO
STN, NO FLOR, NO O FLOR, SLOW
LZY CUT, DIM YLW RNG

5090' MD-5120' MD: SLTST: 60% LTGY
- MEDLTGY, FRI, FN TO MED GRN,
W SRD, CALC CMT, IMBD PYR,
SANDY, SLTY SH, INTGR POR, NO
STN, NO FLOR, NO O FLOR, SLOW
LZY CUT, DIM YLW RNG

5120' MD-5150' MD: SLTST: 60% LTGY

75 TG, C1-C4 675
CG 232u

CG 470u

MD 5137 TVD 5114.21
INC 14.14 AZ 16.5
VS 90.9

MD 5232 TVD 5204.41
INC 22.26 AZ 4.45
VS 119.5

MD 5326 TVD 5287.76
INC 32.57 AZ 358.07
VS 162.44

ROP (Ft/Hr)
Gamma (API)

1500
250

5150

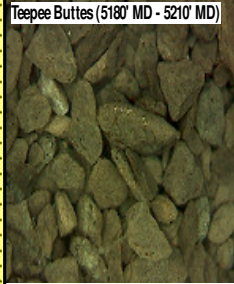
5200

5250

5300

5350

Teepee Buttes (5180' MD - 5210' MD)



5120' MD-5150' MD: SLTST: 60% LTGY
- MEDLTGY, FRI, FN TO MED GRN,
W SRTD, CALC CMT, IMBD PYR,
SANDY, SLTY SH, INTGR POR, NO
STN, NO FLOR, NO O FLOR, SLOW
LZY CUT, DIM YLW RNG

5150' MD-5180' MD: SLTST: 55% LTGY
- MEDLTGY, FRI, FN TO MED GRN,
W SRTD, CALC CMT, IMBD PYR,
TRC IMBD GLAUC, SANDY, SLTY
SH, INTGR POR, NO STN, NO FLOR,
NO O FLOR, SLOW LZY CUT, DIM
YLW RNG

5180' MD-5210' MD: SLTST: 60% LTGY
- MEDLTGY, FRI, FN TO MED GRN,
W SRTD, CALC CMT, IMBD PYR,
SANDY, SLTY SH, INTGR POR, NO
STN, NO FLOR, NO O FLOR, SLOW
LZY CUT, DIM YLW RNG

5210' MD-5240' MD: SLTST: 60% LTGY
- MEDLTGY, FRI, FN TO MED GRN,
W SRTD, CALC CMT, IMBD PYR,
SANDY, SLTY SH, INTGR POR, NO
STN, NO FLOR, NO O FLOR, SLOW
LZY CUT, DIM YLW RNG

5240' MD-5270' MD: SLTYSH: 60%
LTGY - MEDGY, PRED SUBBLKY TO
SUBSPLT, SLTY TO F TXT, FREE
CALC, IMBD PYR, SANDY, FREE
SLTST, IMBD SS, NO STN, NO
FLOR, NO O FLOR, SLOW LZY CUT,
DIM YLW RNG

5270' MD-5300' MD: SLTYSH: 70%
LTGY - MEDGY, PRED SUBBLKY TO
SUBSPLT, SLTY TO F TXT, FREE
CALC, IMBD PYR, SANDY, FREE
SLTST, IMBD SS, NO STN, NO
FLOR, NO O FLOR, SLOW LZY CUT,
DIM YLW RNG

5300' MD-5330' MD: SLTYSH: 70%
LTGY - MEDGY, PRED SUBBLKY TO
SUBSPLT, SLTY TO F TXT, FREE
CALC, IMBD PYR, SANDY, FREE
SLTST, IMBD SS, NO STN, NO
FLOR, NO O FLOR, MOD LZY CUT,
LT BRIYL RNG

5330' MD-5360' MD: SLTYSH: 70%
LTGY - MEDGY, PRED SUBBLKY TO
SUBSPLT, SLTY TO F TXT, FREE
CALC, IMBD PYR, FREE SLTST,

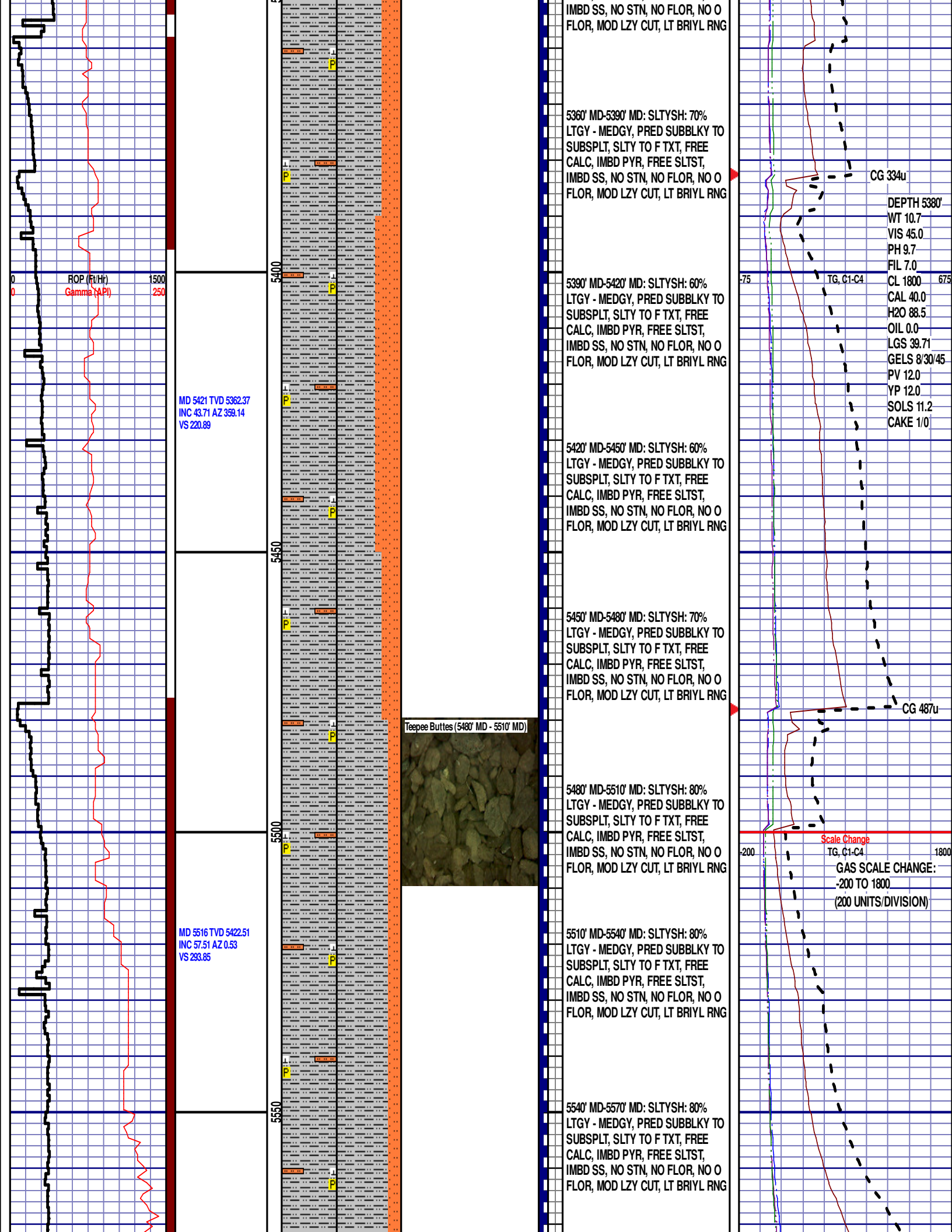
CG 255u

CG 339u

75

TG, C1-C4

675



WOB 12.6K
PP 3623
RPM 0
SPM 71/71

ROP (Ft/Hr) 1500
Gamma (API) 250

5600

50

5570' MD-5600' MD: SLTYSH: 80%
LTGY - MEDGY, PRED SUBBLKY TO
SUBSPLT, SLTY TO F TXT, FREE
CALC, IMBD PYR, FREE SLTST,
IMBD SS, NO STN, NO FLOR, NO O
FLOR, MOD LZ CUT, LT BRIYL RNG

END OF VERTICAL LOG @ 5600' MD
ON 1/10/2015, CONTINUED ON
HORIZONTAL LOG

CG 1406u

200

TG, C1-C4

1800