

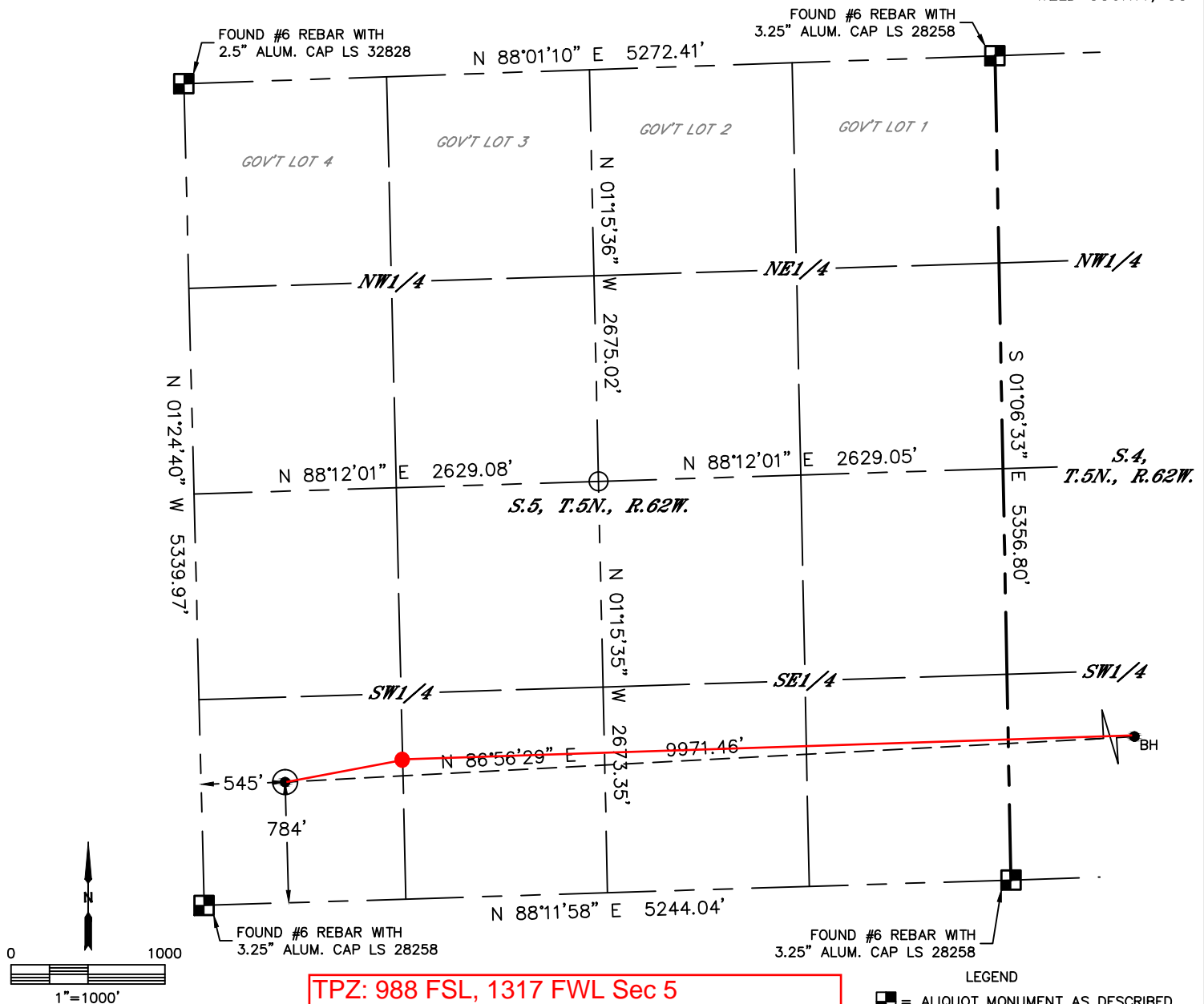


Lat40°, Inc. 6250 W. 10th Street, Unit 2, Greeley, CO 970-515-5294

WELL LOCATION CERTIFICATE

WELLS RANCH AF05-625

SECTION: 5
TOWNSHIP: 5N
RANGE: 62W
6TH. P.M.
WELD COUNTY, CO



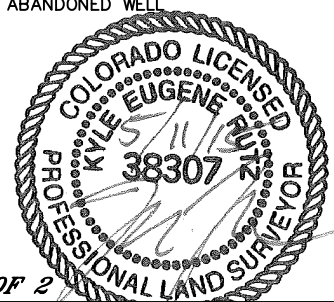
CLIENT: NOBLE ENERGY, INC.						LANDMAN: GREG WILSON			
INSTRUMENT OPERATOR: ADAM BEAUPREZ						SURVEY DATE: 4/2/2015		SURFACE USE: GRASSLAND	
SHL FOOTAGE				SHL LAT °	SHL LONG °	SHL PDOP	SHL ELEV	SHL 1/4/1/4	SHL S-T-R
784	FSL	545	FWL	40.42344	-104.35472	1.5	4667	SWSW	5-5-62

BHL FOOTAGE				BHL LAT °	BHL LONG °	BHL S-T-R
990	FSL	1	FEL	40.42454	-104.31894	4-5-62

NEAREST CULTURAL ITEMS	
EX. WELL	N/A
BUILDING	5280' +
BUILDING UNIT	5280' +
HIGH OCCUPANCY BUILDING UNIT	5280' +
DESIGNATED OUTSIDE ACTIVITY AREA	5280' +
PUBLIC ROAD	5280' +
ABOVE GROUND UTILITY	5280' +
RAILROAD	5280' +
PROPERTY LINE	±545' W

NOTE:
1) Bearings shown are Grid Bearings of the Colorado State Plane Coordinate System, North Zone, North American Datum 1983. The lineal dimensions as contained herein are based upon the "U.S. Survey Foot."
2) Distances to section lines measured at 90 degrees from said section lines.
3) Ground elevations are based on an observed GPS elevation (NAVD 1988 DATUM).
4) Latitude and Longitude shown are (NAD 83 DATUM).
5) IMPROVEMENTS: See LOCATION DRAWING for all visible improvements within 500' of oil and gas location.
6) This map does not represent a boundary survey.

- LEGEND
- = ALIQUOT MONUMENT AS DESCRIBED
 - = CALCULATED POSITION
 - = SURFACE HOLE LOCATION (SHL)
 - ▲ = ENTRY POINT LOCATION (EP)
 - BH = BOTTOM HOLE LOCATION (BHL)
 - ⊕ = EXISTING WELL
 - ⊖ = ABANDONED WELL



SHEET 1 OF 2

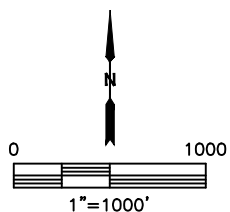
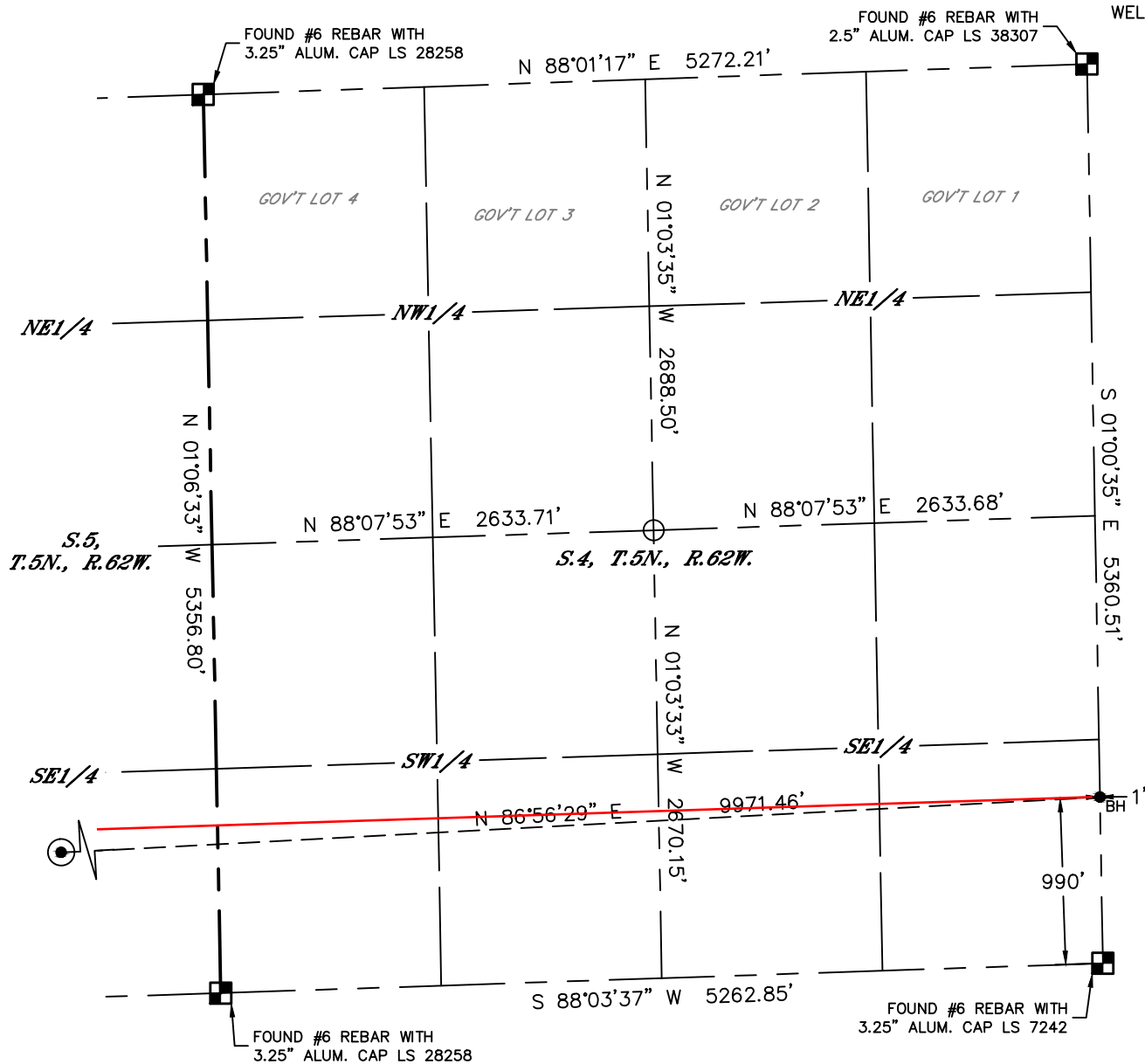
Kyle E. Rutz—On behalf of Lat40, Inc.
Colorado Licensed Professional Land Surveyor No. 38307
DATE: 5/11/2015
PROJECT#: 2015026

Lat40°, Inc. 6250 W. 10th Street, Unit 2, Greeley, CO 970-515-5294








WELL LOCATION CERTIFICATE

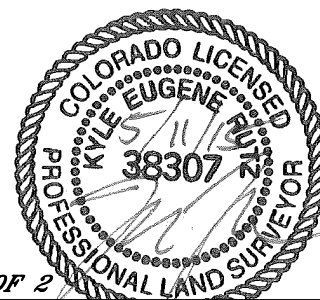
WELLS RANCH AF05-625

SECTION: 5
TOWNSHIP: 5N
RANGE: 62W
6TH. P.M.
WELD COUNTY, CO



LEGEND

-  = ALIQUOT MONUMENT AS DESCRIBED
 = CALCULATED POSITION
 = SURFACE HOLE LOCATION (SHL)
 = ENTRY POINT LOCATION (EP)
 = BOTTOM HOLE LOCATION (BHL)
 = EXISTING WELL
 = ABANDONED WELL



SHEET 2 OF 2

Kyle E. Rutz—On behalf of E&B, Inc.
Colorado Licensed Professional Land Surveyor No. 38307
DATE: 5/11/2015
PROJECT#: 2015026

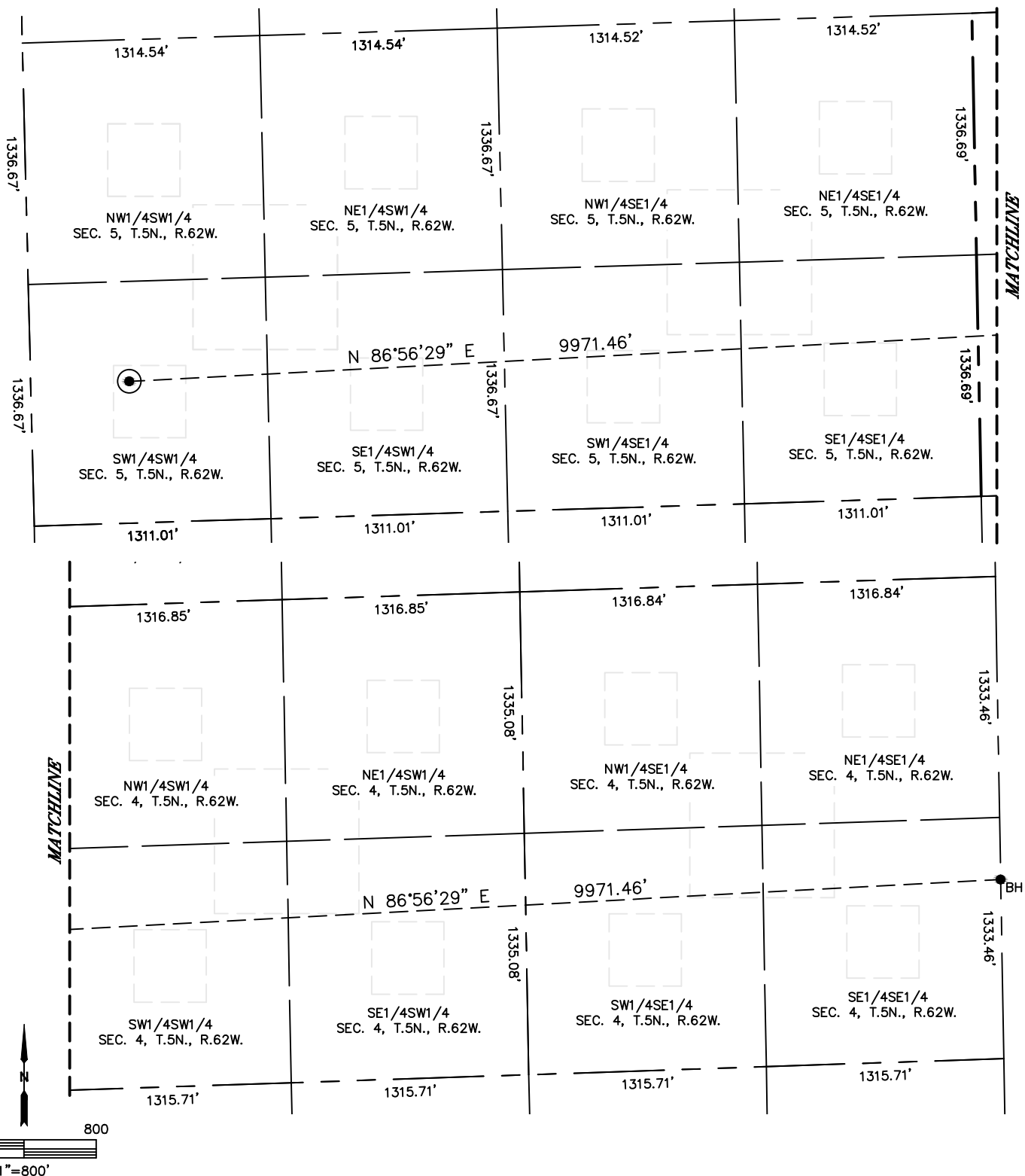


Lat40°, Inc. 6250 W. 10th Street, Unit 2, Greeley, CO 970-515-5294

SITE SKETCH

WELLS RANCH AF05-625

SECTION: 5
TOWNSHIP: 5N
RANGE: 62W
6TH. P.M.
WELD COUNTY, CO



NOTE: NO EXISTING WELLS ADJACENT TO PROPOSED WELL BORE.

DATE: 5/11/2015
PROJECT#: 2015026