



Kerr-McGee Oil & Gas Onshore LP

A subsidiary of Anadarko Petroleum Corporation

1099 18th Street
Denver, CO 80202
720-929-6000

June 23, 2015

Matt Lepore
Director, Colorado Oil and Gas Conservation Commission
Department of Natural Resources
The Chancery Building
1120 Lincoln Street, Suite 801
Denver, CO 80203

Re: **30 Day Certification Letter - 318A.e**
ALVIN 1N-29HZ (COGCC DOC# 400802546)
Township 2 North, Range 65 West
Section 29: SE/4 SE/4
Weld County, Colorado
Unit Acreage: 240
Unit Spacing: 2N-65W-20: SESE; 29: E2E2; 32: NENE
Weld County, Colorado

Dear Director Lepore:

Kerr McGee Oil and Gas Onshore LP ("KMG") hereby certifies that KMG owns one hundred percent (100%) of the leasehold interest in the mineral rights in the proposed spacing unit. KMG hereby respectfully requests approval of this boundary well.

If you have any questions or issues regarding this permit, please contact our office.

Sincerely,

Kerr-McGee Oil and Gas Onshore LP

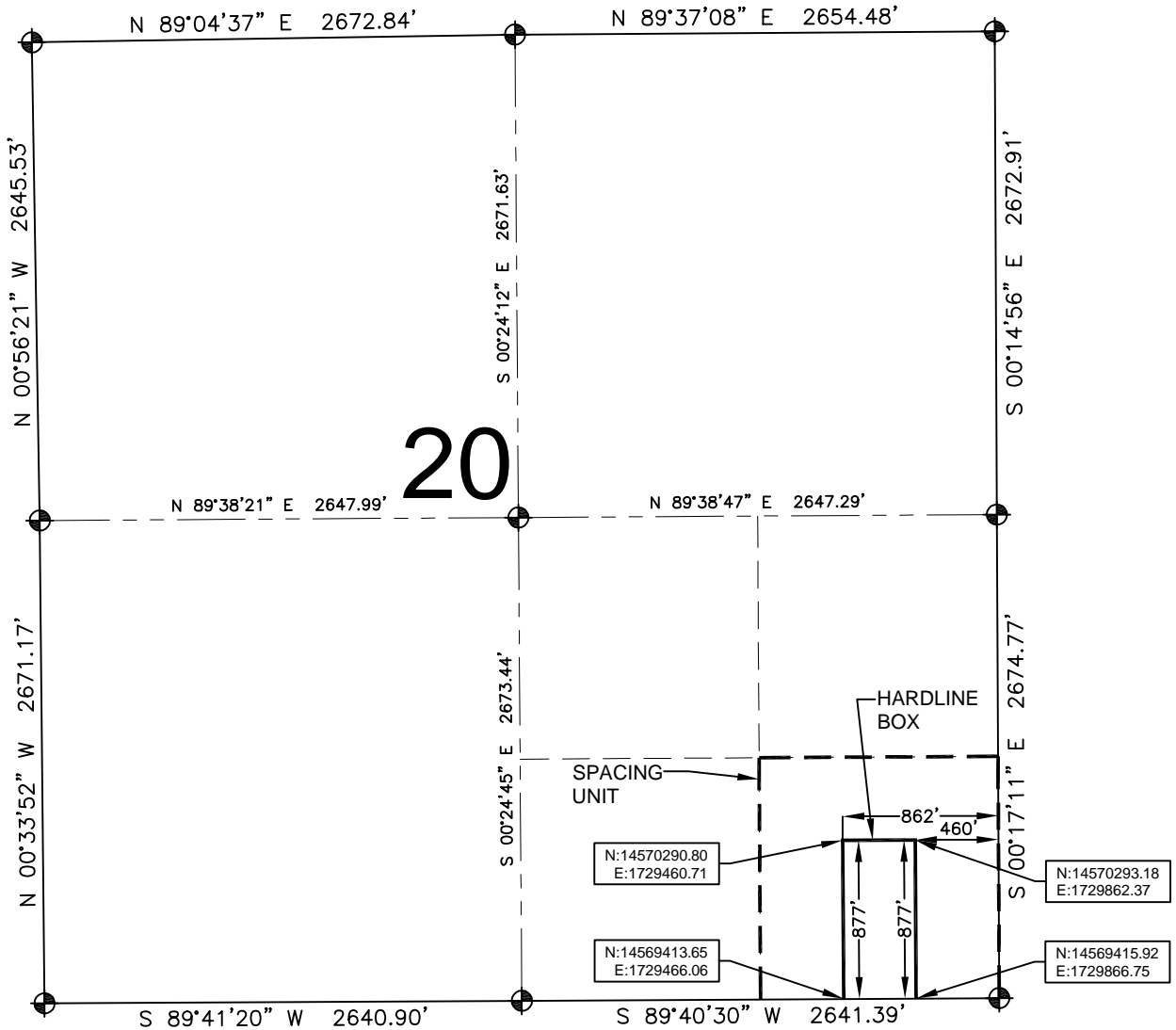
A blue ink signature of Craig Richardson.

Craig Richardson
Regulatory Analyst II

Enclosure

HARDLINE EXHIBIT: ALVIN 1N-29HZ

SECTION 20, TOWNSHIP 2 NORTH, RANGE 65 WEST, 6TH P.M.



LEGEND

- = EXISTING MONUMENT ♦ = BOTTOM HOLE
● = PROPOSED HEEL BH = BOTTOM HOLE
○ = CALCULATED POSITION

HEEL LOCATION

WGS84 UTM 13N
LATITUDE= 40.102371°
LONGITUDE= 104.680343°

LATITUDE= 40°06'08.535"
LONGITUDE= 104°40'49.235"

BOTTOM HOLE LOCATION

NAD83 STATE PLANE CO N
LATITUDE= 40.116633°
LONGITUDE= 104.680289°

LATITUDE= 40°06'59.881"
LONGITUDE= 104°40'49.040"

QRT/QRT SECTIONS WITHIN PATH OF THE HARDLINE

SESE, SEC. 20

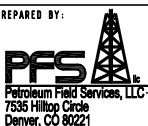
AVAILABLE FOOTAGE

7031'

NOTES:

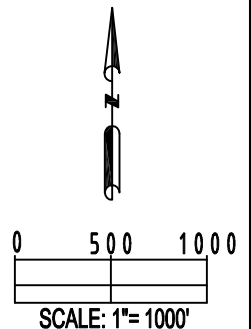
- THIS DOCUMENT IS NOT A LAND SURVEY PLAT OR IMPROVEMENT SURVEY PLAT. THIS DOCUMENT DOES NOT REFLECT A FIELD SURVEY. SECTION BREAKDOWN, MONUMENTATION AND HORIZONTAL POSITIONS SHOWN ARE BASED ON THE HEEL AND BOTTOM HOLE LOCATION PROVIDED BY ANADARKO PETROLEUM CORPORATION.
- COORDINATES ARE PROVIDED IN WGS84, UTM ZONE 13N.

PREPARED BY:



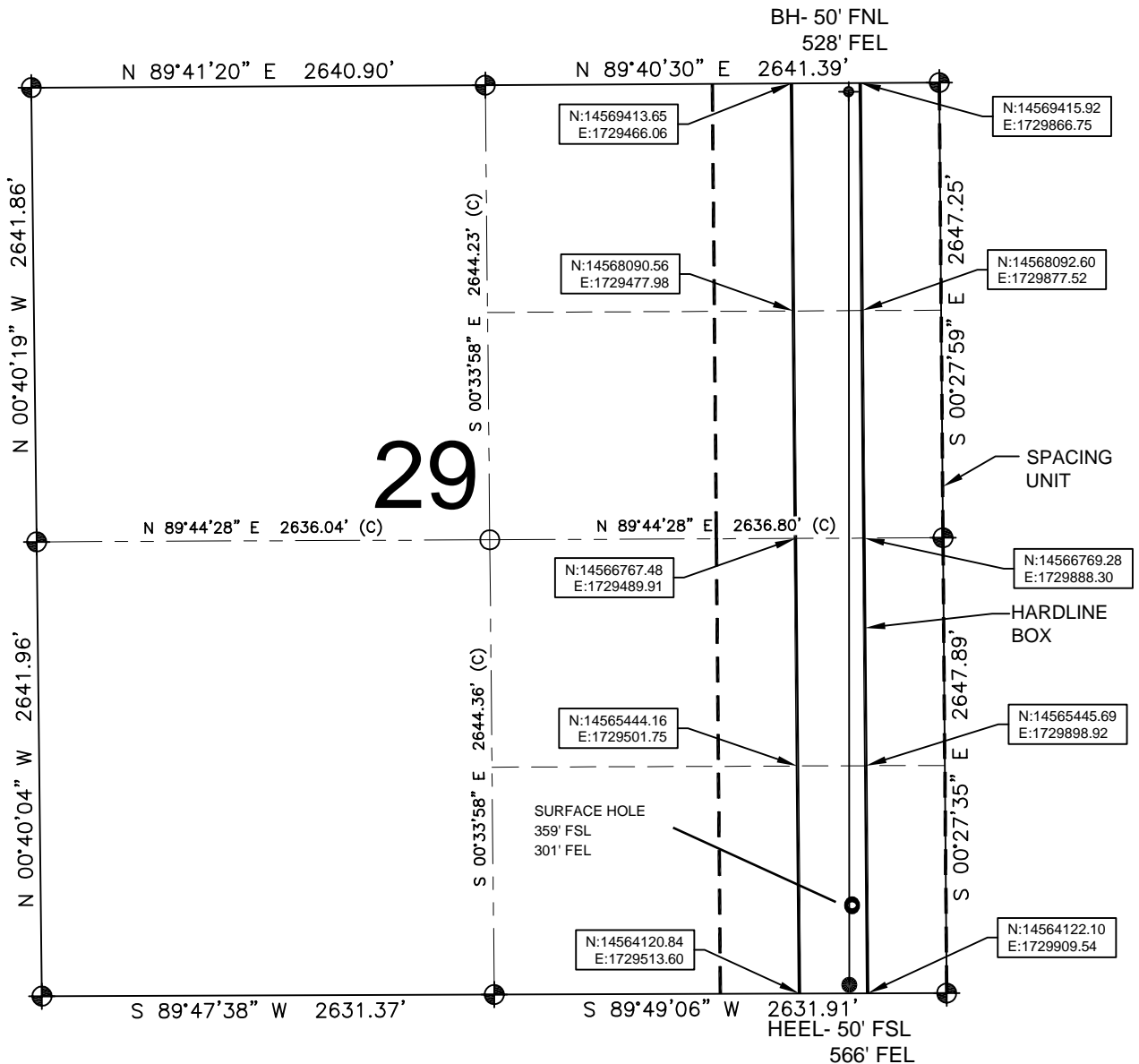
SHEET 1 OF 3

DRAWING DATE:	02-09-15	HEEL LOCATION:	SE 1/4 SE 1/4, SEC. 29, T2N, R65W, 6TH P.M. WELD COUNTY, COLORADO
BY:	SMF	CHECKED:	MDCA



HARDLINE EXHIBIT: ALVIN 1N-29HZ

SECTION 29, TOWNSHIP 2 NORTH, RANGE 65 WEST, 6TH P.M.



LEGEND

- = EXISTING MONUMENT
- = PROPOSED HEEL
- = CALCULATED POSITION
- ◆ = BOTTOM HOLE
- BH = BOTTOM HOLE

QRT/QRT SECTIONS WITHIN PATH OF THE HARDLINE

NENE, SEC. 29
SENE, SEC. 29
NESE, SEC. 29
SESE, SEC. 29

NOTES:

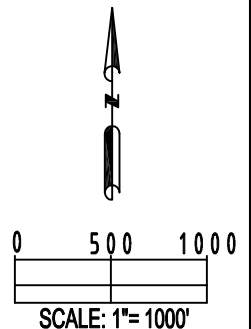
- THIS DOCUMENT IS NOT A LAND SURVEY PLAT OR IMPROVEMENT SURVEY PLAT. THIS DOCUMENT DOES NOT REFLECT A FIELD SURVEY. SECTION BREAKDOWN, MONUMENTATION AND HORIZONTAL POSITIONS SHOWN ARE BASED ON THE HEEL AND BOTTOM HOLE LOCATION PROVIDED BY ANADARKO PETROLEUM CORPORATION.
- COORDINATES ARE PROVIDED IN WGS84, UTM ZONE 13N.

PREPARED BY:



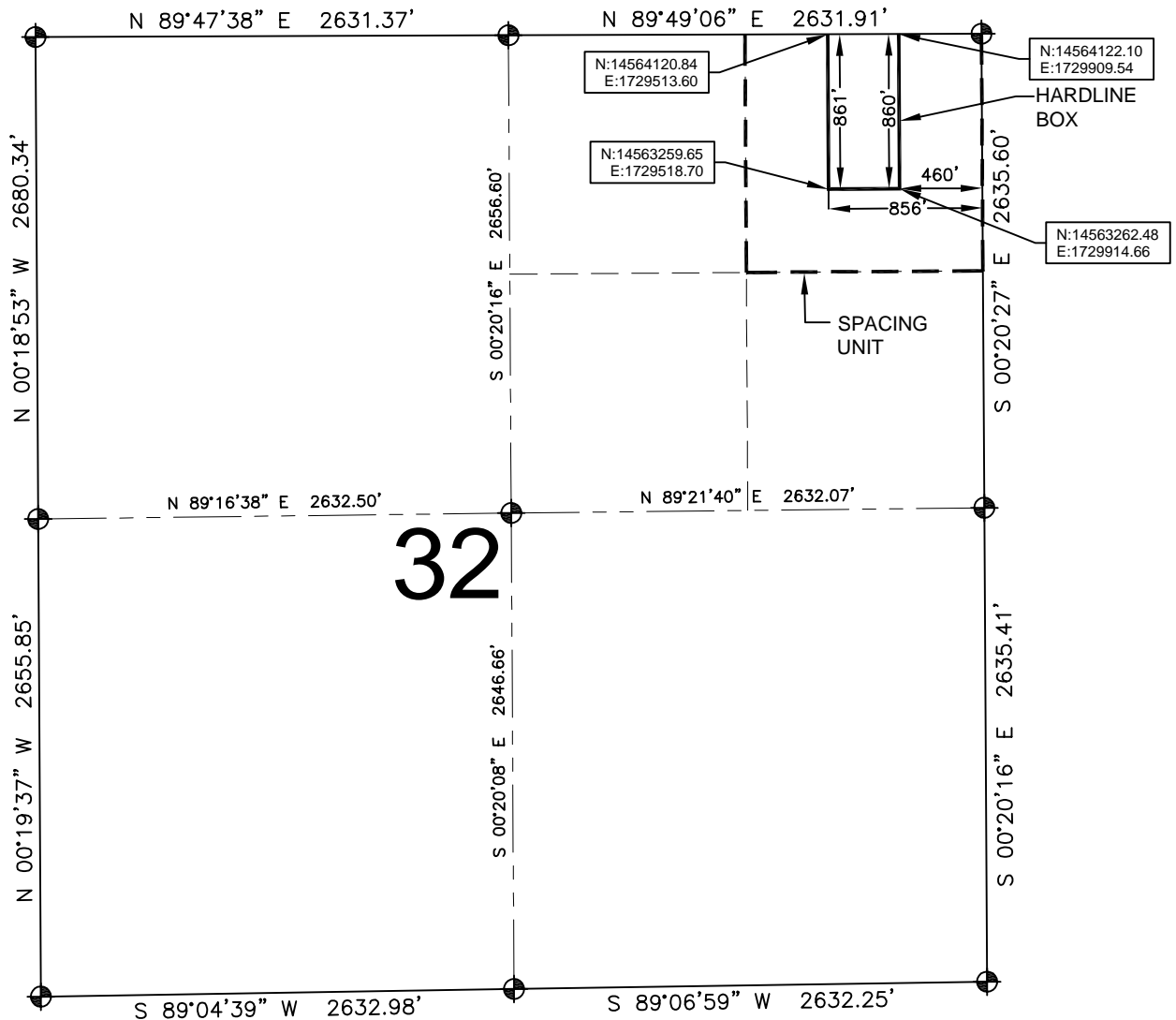
SHEET 2 OF 3

DRAWING DATE:	02-09-15	HEEL LOCATION:	SE 1/4 SE 1/4, SEC. 29, T2N, R65W, 6TH P.M. WELD COUNTY, COLORADO
BY:	SMF	CHECKED:	MDCA



HARDLINE EXHIBIT: ALVIN 1N-29HZ

SECTION 32, TOWNSHIP 2 NORTH, RANGE 65 WEST, 6TH P.M.



LEGEND

- = EXISTING MONUMENT
- = PROPOSED HEEL
- = CALCULATED POSITION
- ◆ = BOTTOM HOLE
- BH = BOTTOM HOLE

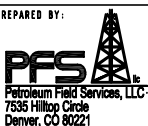
QRT/QRT SECTIONS WITHIN PATH OF THE HARDLINE

NENE, SEC. 32

NOTES:

- THIS DOCUMENT IS NOT A LAND SURVEY PLAT OR IMPROVEMENT SURVEY PLAT. THIS DOCUMENT DOES NOT REFLECT A FIELD SURVEY. SECTION BREAKDOWN, MONUMENTATION AND HORIZONTAL POSITIONS SHOWN ARE BASED ON THE HEEL AND BOTTOM HOLE LOCATION PROVIDED BY ANADARKO PETROLEUM CORPORATION.
- COORDINATES ARE PROVIDED IN WGS84, UTM ZONE 13N.

PREPARED BY:



SHEET 3 OF 3

DRAWING DATE:	02-09-15	HEEL LOCATION:	SE 1/4 SE 1/4, SEC. 29, T2N, R65W, 6TH P.M.
BY:	SMF	CHECKED:	MDCA
			WELD COUNTY, COLORADO

