



# Kerr-McGee Oil & Gas Onshore LP

A subsidiary of Anadarko Petroleum Corporation

1099 18<sup>th</sup> Street  
Denver, CO 80202  
720-929-6000

June 23, 2015

Matt Lepore  
Director, Colorado Oil and Gas Conservation Commission  
Department of Natural Resources  
The Chancery Building  
1120 Lincoln Street, Suite 801  
Denver, CO 80203

Re: **30 Day Certification Letter - 318A.e**  
ALVIN 2C-29HZ (COGCC DOC# 400801867)  
Township 2 North, Range 65 West  
Section 29: SE/4 SE/4  
Weld County, Colorado  
Unit Acreage: 480  
Unit Spacing: 2N-65W-20: S2SE; 29: E2; 32:N2NE  
Weld County, Colorado

Dear Director Lepore:

Kerr McGee Oil and Gas Onshore LP ("KMG") hereby certifies that KMG owns one hundred percent (100%) of the leasehold interest in the mineral rights in the proposed spacing unit. KMG hereby respectfully requests approval of this boundary well.

If you have any questions or issues regarding this permit, please contact our office.

Sincerely,

**Kerr-McGee Oil and Gas Onshore LP**

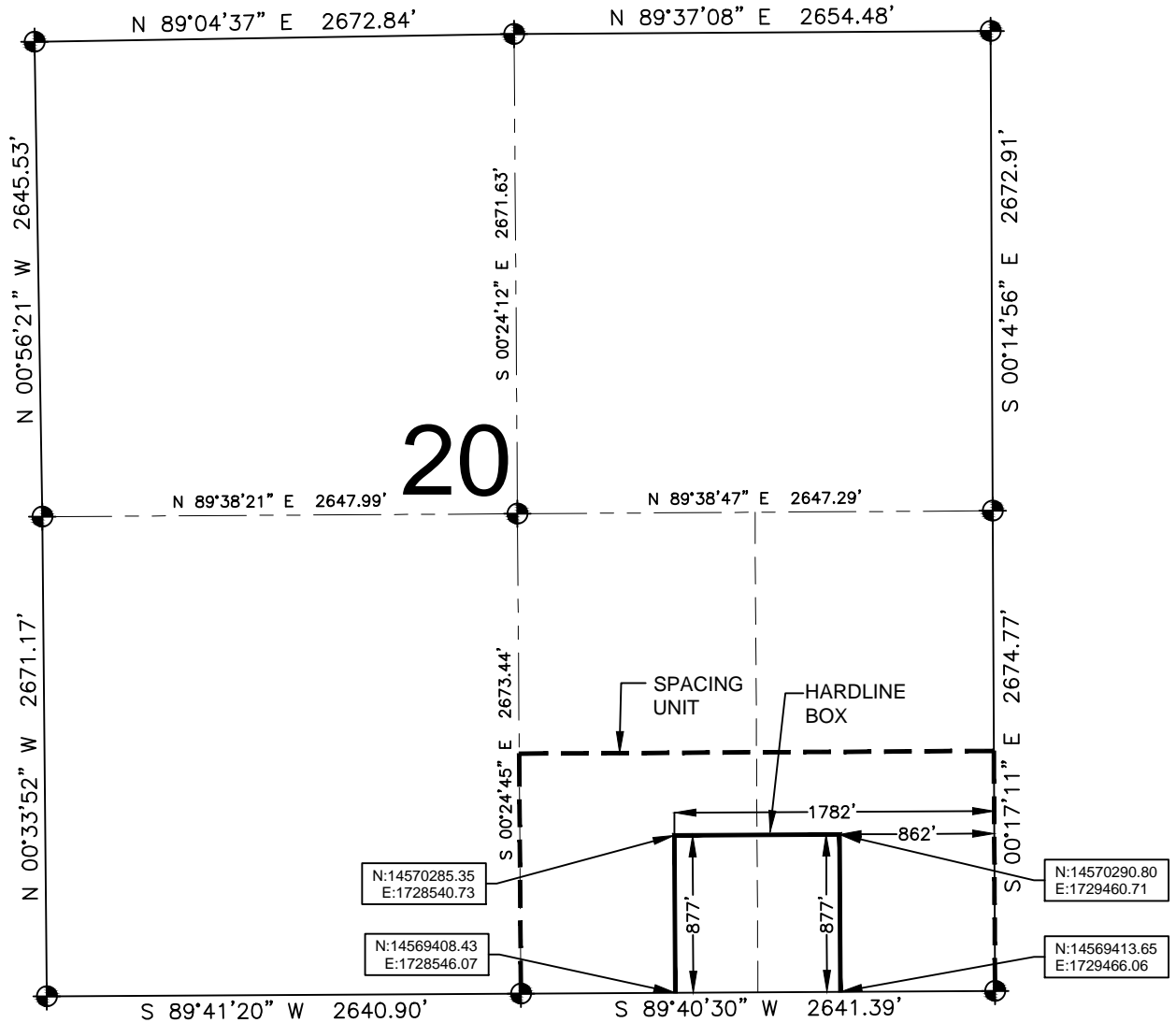
A blue ink signature of Craig Richardson.

Craig Richardson  
Regulatory Analyst II

Enclosure

# HARDLINE EXHIBIT: ALVIN 2C-29HZ

SECTION 20, TOWNSHIP 2 NORTH, RANGE 65 WEST, 6TH P.M.



## LEGEND

- = EXISTING MONUMENT    ● = BOTTOM HOLE  
● = PROPOSED HEEL    BH = BOTTOM HOLE  
○ = CALCULATED POSITION

## HEEL LOCATION

WGS84 UTM 13N  
LATITUDE= 40.102364°  
LONGITUDE= 104.683984°

LATITUDE= 40°06'08.509"  
LONGITUDE= 104°41'02.341"

## BOTTOM HOLE LOCATION

NAD83 STATE PLANE CO N  
LATITUDE= 40.116627°  
LONGITUDE= 104.684079°

LATITUDE= 40°06'59.859"  
LONGITUDE= 104°41'02.684"

## QRT/QRT SECTIONS WITHIN PATH OF THE HARDLINE

SWSE, SEC. 20  
SESE, SEC. 20

## AVAILABLE FOOTAGE

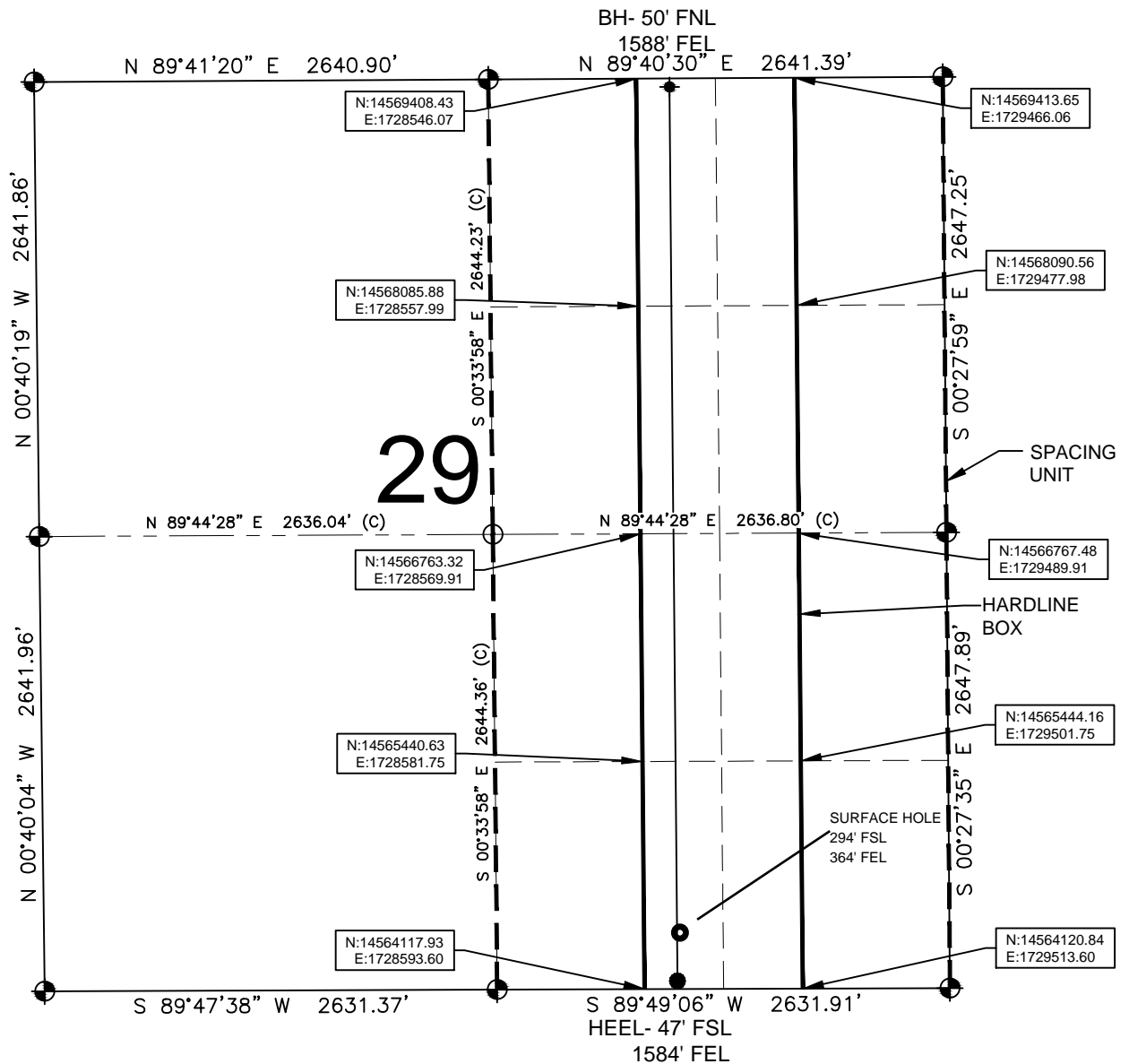
7031'

## NOTES:

- THIS DOCUMENT IS NOT A LAND SURVEY PLAT OR IMPROVEMENT SURVEY PLAT. THIS DOCUMENT DOES NOT REFLECT A FIELD SURVEY. SECTION BREAKDOWN, MONUMENTATION AND HORIZONTAL POSITIONS SHOWN ARE BASED ON THE HEEL AND BOTTOM HOLE LOCATION PROVIDED BY ANADARKO PETROLEUM CORPORATION.
- COORDINATES ARE PROVIDED IN WGS84, UTM ZONE 13N.

# HARDLINE EXHIBIT: ALVIN 2C-29HZ

SECTION 29, TOWNSHIP 2 NORTH, RANGE 65 WEST, 6TH P.M.



## LEGEND

- = EXISTING MONUMENT
- = PROPOSED HEEL
- = CALCULATED POSITION
- ◆ = BOTTOM HOLE
- BH = BOTTOM HOLE

## QRT/QRT SECTIONS WITHIN PATH OF THE HARDLINE

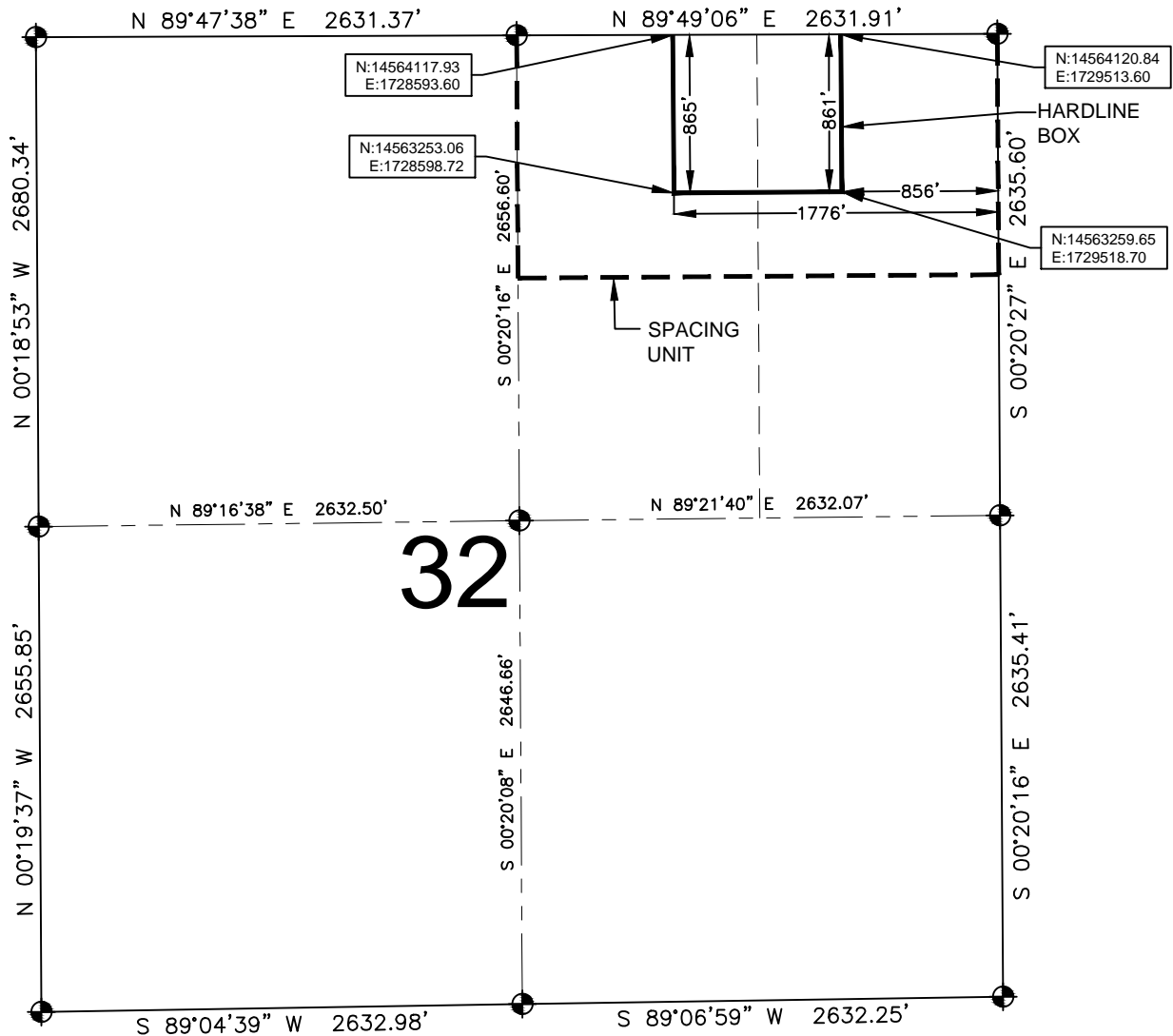
NWNE, SEC. 29    NENE, SEC. 29  
SWNE, SEC. 29    SENE, SEC. 29  
NWSE, SEC. 29    NESE, SEC. 29  
SWSE, SEC. 29    SESE, SEC. 29

## NOTES:

- THIS DOCUMENT IS NOT A LAND SURVEY PLAT OR IMPROVEMENT SURVEY PLAT. THIS DOCUMENT DOES NOT REFLECT A FIELD SURVEY. SECTION BREAKDOWN, MONUMENTATION AND HORIZONTAL POSITIONS SHOWN ARE BASED ON THE HEEL AND BOTTOM HOLE LOCATION PROVIDED BY ANADARKO PETROLEUM CORPORATION.
- COORDINATES ARE PROVIDED IN WGS84, UTM ZONE 13N.

# HARDLINE EXHIBIT: ALVIN 2C-29HZ

SECTION 32, TOWNSHIP 2 NORTH, RANGE 65 WEST, 6TH P.M.



## LEGEND

- = EXISTING MONUMENT
- = PROPOSED HEEL
- = CALCULATED POSITION
- ⊕ = BOTTOM HOLE
- BH = BOTTOM HOLE

## QRT/QRT SECTIONS WITHIN PATH OF THE HARDLINE

NWNE, SEC. 32  
NENE, SEC. 32

## NOTES:

- THIS DOCUMENT IS NOT A LAND SURVEY PLAT OR IMPROVEMENT SURVEY PLAT. THIS DOCUMENT DOES NOT REFLECT A FIELD SURVEY. SECTION BREAKDOWN, MONUMENTATION AND HORIZONTAL POSITIONS SHOWN ARE BASED ON THE HEEL AND BOTTOM HOLE LOCATION PROVIDED BY ANADARKO PETROLEUM CORPORATION.
- COORDINATES ARE PROVIDED IN WGS84, UTM ZONE 13N.