

T10N, R57W, 6th P.M.

- Target
Bottom Hole



UELS, LLC
Corporate Office * 85 South 200 East
Vernal, UT 84078 * (435) 789-1017

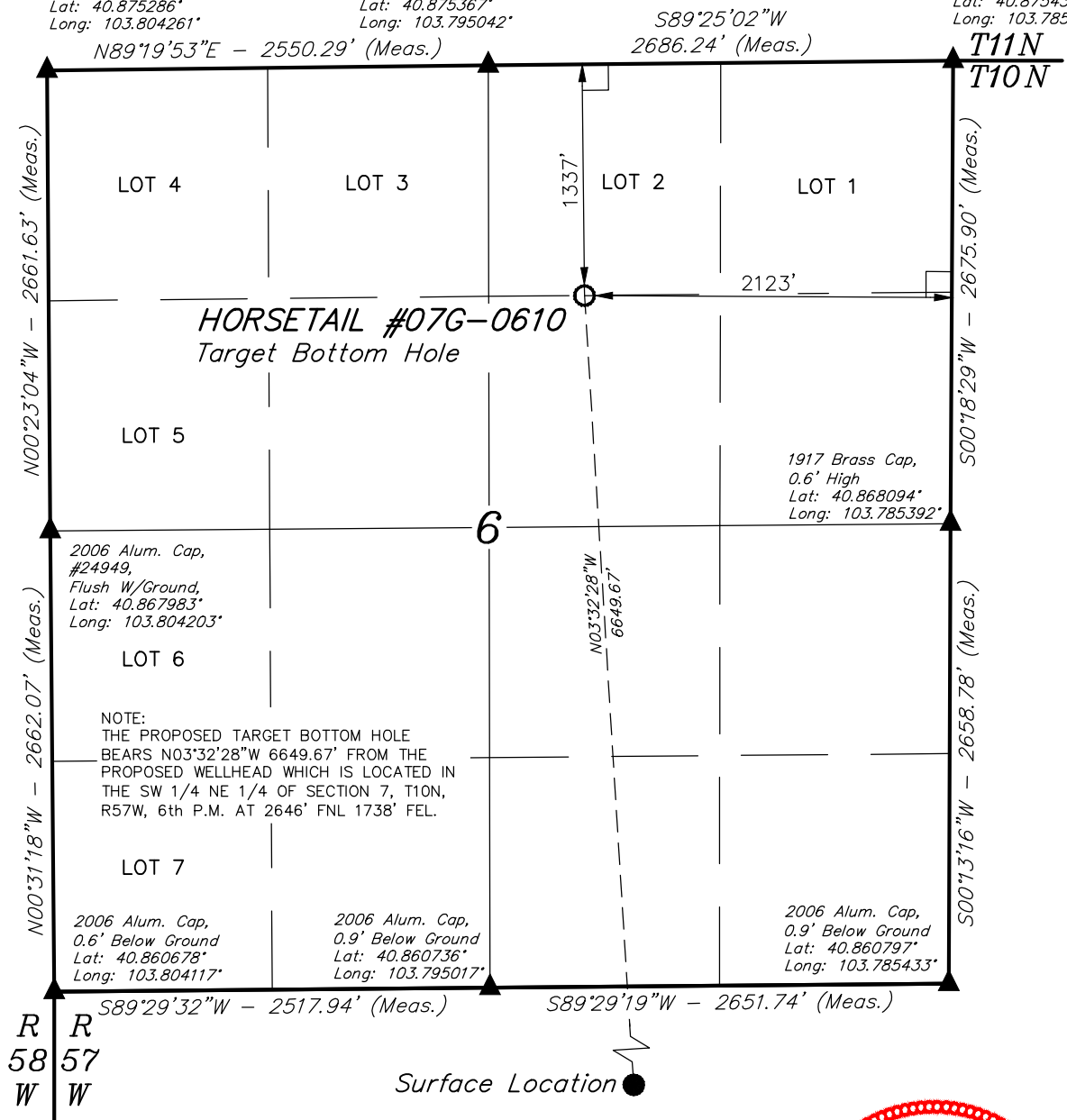


T10N, R57W, 6th P.M.

- 1917 Brass Cap,
0.5' High
Lat: 40.875286°
Long: 103.804261°

- 1917 Brass Cap,
0.3' High
Lat: 40.875367°
Long: 103.795042°

- 1917 Brass Cap,
0.4' High
Lat: 40.875436°
Long: 103.785333°



NAD 27 (TARGET BOTTOM HOLE)
 LATITUDE = 40°52'18.22" (40.871728)
 LONGITUDE = 103°47'33.13" (103.792536)



SPOT ELEVATION LOCATED AT THE NORTHEAST CORNER OF SECTION 15, T9N, R58W, 6th P.M. TAKEN FROM THE GATEHOOK SPRING, QUADRANGLE, COLORADO, WELD COUNTY, 7.5 MINUTE QUAD (TOPOGRAPHIC MAP) PUBLISHED BY THE UNITED STATES DEPARTMENT OF THE INTERIOR, GEOLOGICAL SURVEY. SAID ELEVATION IS MARKED AS BEING 4679 FEET.



**Corporate Office * 85 South 200 East
Vernal, UT 84078 * (435) 789-1017**



THIS IS TO CERTIFY THAT THE ABOVE PLAT WAS PREPARED FROM FIELD NOTES OF ACTUAL SURVEYS MADE BY ME OR UNDER MY SUPERVISION, AND THAT THE SAME ARE TRUE AND CORRECT TO THE BEST OF MY KNOWLEDGE AND BELIEF.

REGISTERED LAND SURVEYOR
REGISTRATION NO. 28285
STATE OF COLORADO

03-05-15

**HORSETAIL #07G-0610 (TARGET BOTTOM HOLE)
SW 1/4 NE 1/4, SECTION 6, T10N, R57W, 6th P.M.
WELD COUNTY, COLORADO**

SURVEYED BY: DALLAS NIELSEN, D.W.	DATE: 02-27-15
DRAWN BY: K.B.	DATE DRAWN: 08-11-14
SCALE: 1" = 1000'	REVISED: 02-28-15

WELL LOCATION PLAT