



RADIAL CEMENT BOND LOG

Company KERR MCGEE OIL AND GAS
Well DANTZKER 10-16
Field WATTENBERG
County WELD State CO

Location: API #: 05-123-16049-0000

NW/SE
FEL: 2000' & FSL: 1980'

SEC 16 TWP 3N RGE 67W

Permanent Datum	G.L.	Elevation	4782'	Other Services Elevation K.B. 4792' D.F. 4791' G.L. 4782'
Log Measured From	K.B. 10'			
Drilling Measured From	K.B.			

Date 7-8-2015

Run Number	ONE
Depth Driller	7229'
Depth Logger	6000'
Bottom Logged Interval	6000'
Top Log Interval	SURFACE
Open Hole Size	4.5
Type Fluid	WATER
Density / Viscosity	~8.3#
Max. Recorded Temp.	NA
Estimated Cement Top	5792'
Time Well Ready	NA
Time Logger on Bottom	NA
Equipment Number	203
Location	AULT. CO
Recorded By	C.JONES
Witnessed By	D. DONOHO

Borehole Record				Tubing Record			
Run Number	Bit	From	To	Size	Weight	From	To
				2.38	4.7#	0'	7034'

Casing Record	Size	Wgt/Ft	Top	Bottom
Surface String	8.625	24#	0'	562'
Prot. String				
Production String	4.5	11.6#	0'	7210'
Liner				

<<< Fold Here >>>

All interpretations are opinions based on inferences from electrical or other measurements and we cannot and do not guarantee the accuracy or correctness of any interpretation, and we shall not, except in the case of gross or willful negligence on our part, be liable or responsible for any loss, costs, damages, or expenses incurred or sustained by anyone resulting from any interpretation made by any of our officers, agents or employees. These interpretations are also subject to our general terms and conditions set out in our current Price Schedule.

Comments

RAN CBL TO VERIFY CEMENT TOP & FREE PIPE.
FREE PIPE AMPLITUDE = 92 m.V.
LOG RAN @ 0 P.S.I.
TIED INTO BRAN-DE X WIRELINE C.B.L. FROM 9-4-1992.

CREW.

ENGINEER: CODY JONES / OPERATORS: WALTER HOWARD, BRAD COLEMAN, VELO LUALEMAGA

THANK YOU FOR USING CUTTERS WIRELINE SERVICE.

Calibration Report

Database File: kerr-mcgee_dantzker 10_16.db
Dataset Pathname: pass12
Dataset Creation: Wed Jul 08 16:34:31 2015 by Log 7.0 B1

Serial Number: 275D_with_INC
Tool Model: 275D_INC
Performed: Tue Jul 07 10:52:54 2015

Calibrator Value: 300.0 GAPI
Background Reading: 0.0 cps
Calibrator Reading: 400.0 cps
Sensitivity: 0.8000 GAPI/cps

Inclinometer Calibration Report

Performed: Fri Apr 04 17:42:15 2008

	Low Read.	High Read.	Low Ref.	High Ref.	
X Accelerometer	-3579.00	3617.00	-1.00	1.00	gee
Y Accelerometer	-3671.40	3529.80	-1.00	1.00	gee
Z Accelerometer	-20.40	3584.00	0.00	1.00	gee

Segmented Cement Bond Log Calibration Report

Serial Number: 110217
Tool Model: Probe

Calibration Casing Diameter: 4.500 in
Calibration Depth: 3759.370 ft

Master Calibration, performed Wed Jul 08 15:50:38 2015:

	Raw (v)		Calibrated (mv)		Results	
	Zero	Cal	Zero	Cal	Gain	Offset
3'	0.018	0.726	0.250	82.000	115.493	-1.829
CAL	0.012	0.706				
5'	0.019	0.517	0.250	82.000	164.145	-2.856
SUM						
S1	0.102	0.759	0.250	100.000	151.994	-15.319
S2	0.021	0.654	0.250	100.000	157.675	-3.074
S3	0.022	0.649	0.250	100.000	158.930	-3.182
S4	0.025	0.717	0.250	100.000	144.004	-3.294
S5	0.028	0.790	0.250	100.000	130.872	-3.391
S6	0.028	0.815	0.250	100.000	126.783	-3.280
S7	0.029	0.786	0.250	100.000	131.735	-3.608
S8	0.027	0.770	0.250	100.000	134.272	-3.341

Internal Reference Calibration, performed Wed Dec 31 18:00:00 1969:

	Raw (v)		Calibrated (v)		Results	
	Zero	Cal	Zero	Cal	Gain	Offset
CAL	0.000	0.000	0.012	0.706	1.000	0.000

Air Zero Calibration, performed Wed Jul 08 15:09:28 2015:

	Raw (v)	Calibrated (v)	Results
--	---------	----------------	---------


	Raw (v)	Calibrated (v)	Results
	Zero	Zero	Offset
3'	0.000	0.000	0.000
5'	0.000	0.000	0.000
SUM			
S1	0.000	0.000	0.000
S2	0.000	0.000	0.000
S3	0.000	0.000	0.000
S4	0.000	0.000	0.000
S5	0.000	0.000	0.000
S6	0.000	0.000	0.000
S7	0.000	0.000	0.000
S8	0.000	0.000	0.000

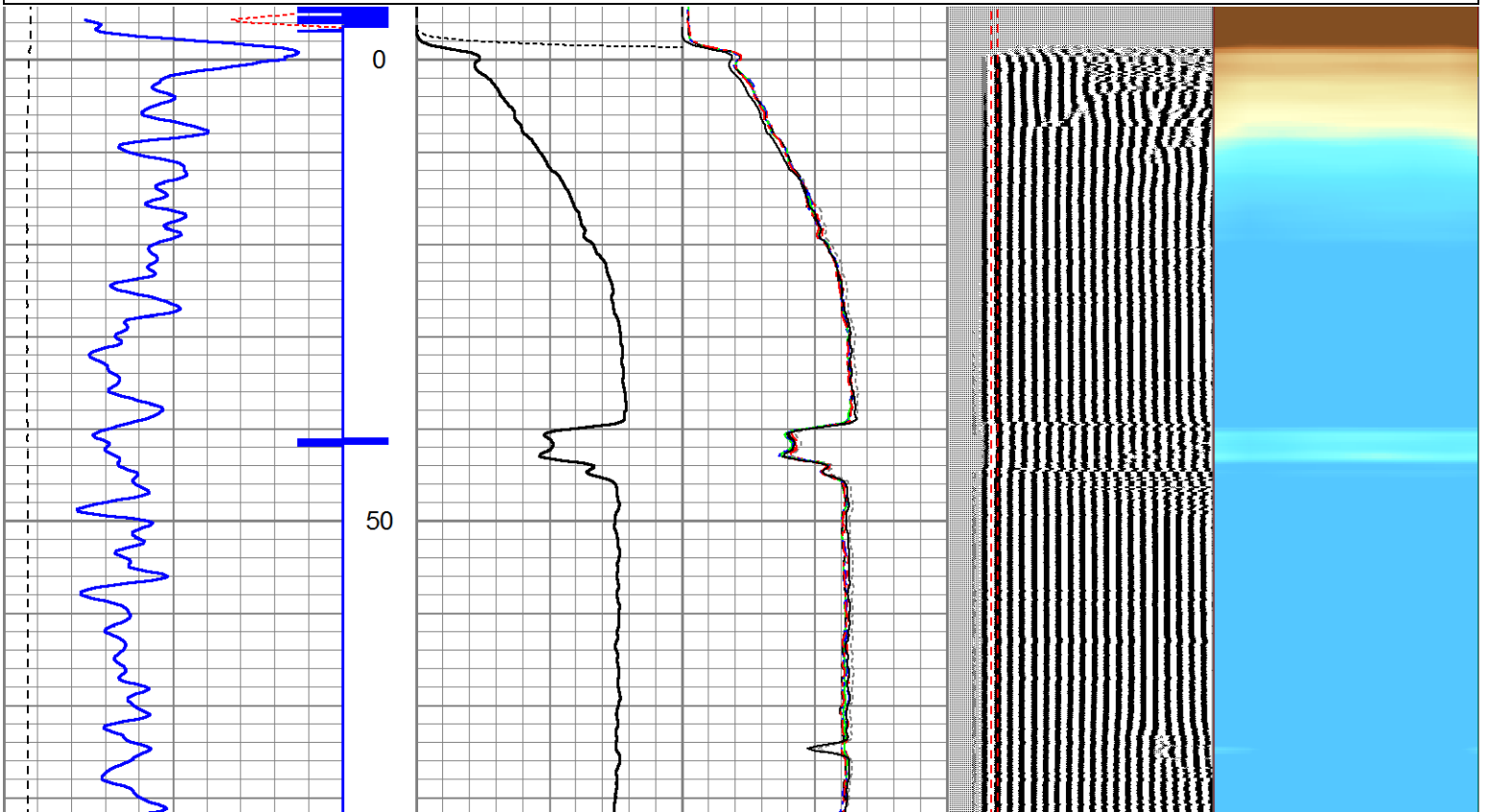


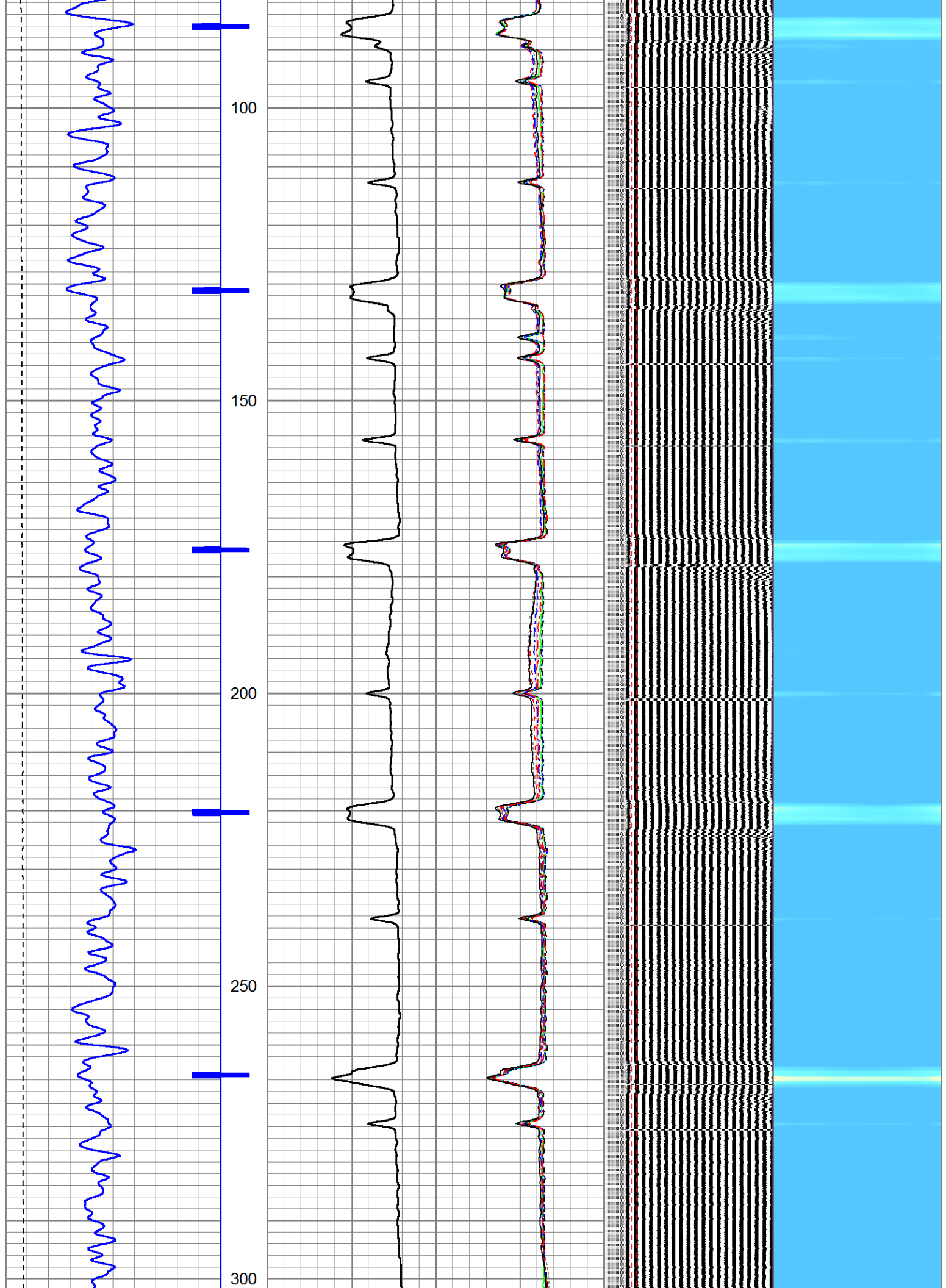
SURFACE PASS

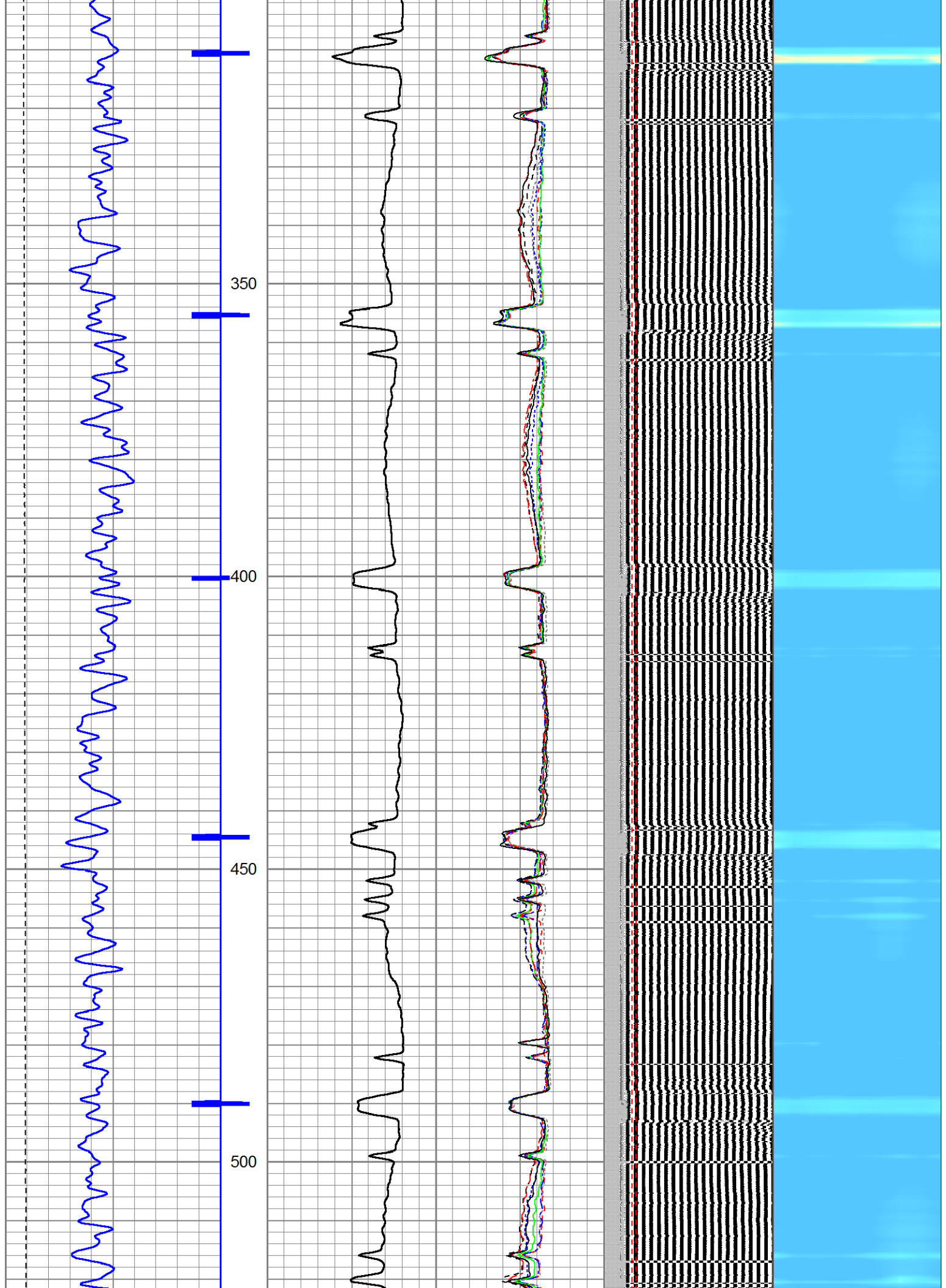
5" = 100'

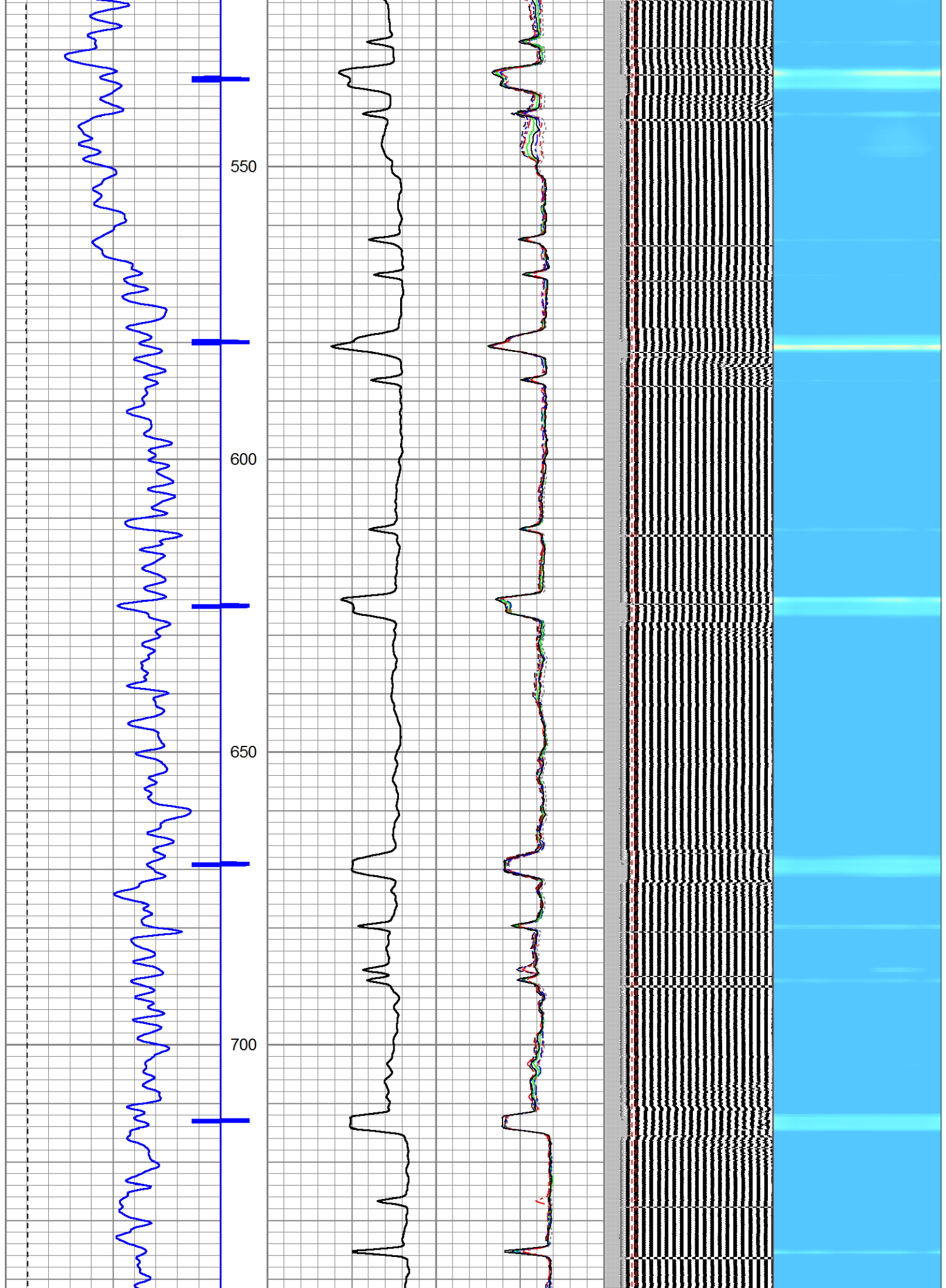
Database File: kerr-mcgee_dantzker 10_16.db
Dataset Pathname: pass12
Presentation Format: scbl4_5
Dataset Creation: Wed Jul 08 16:34:31 2015 by Log 7.0 B1
Charted by: Depth in Feet scaled 1:240

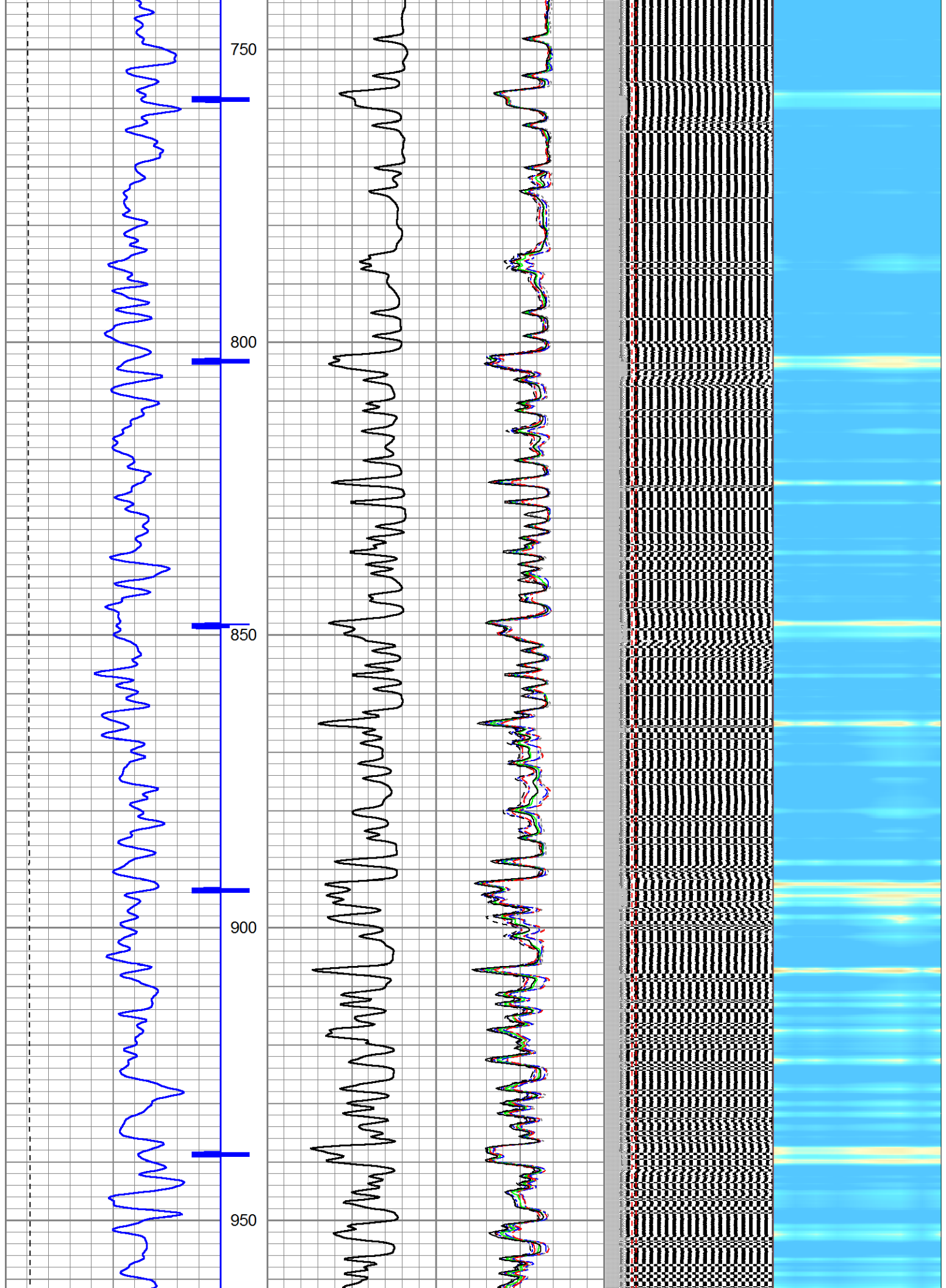
325	TT (usec)	225	0	Amplitude (mV)	100	-5	AMPS2	150	200	VDL	1200	Cement Map		
0	GR (GAPI)	150		Amplified Amplitude		-5	AMPS3	150					1	80
0	LTEN (lb)	3000	0	(mV)	10	-5	AMPS4	150	Free Pipe Section					
						-5	AMPS5	150						
						-5	AMPS6	150						
						-5	AMPS7	150						
						-5	AMPS8	150						
						-5	AMPS1	150						

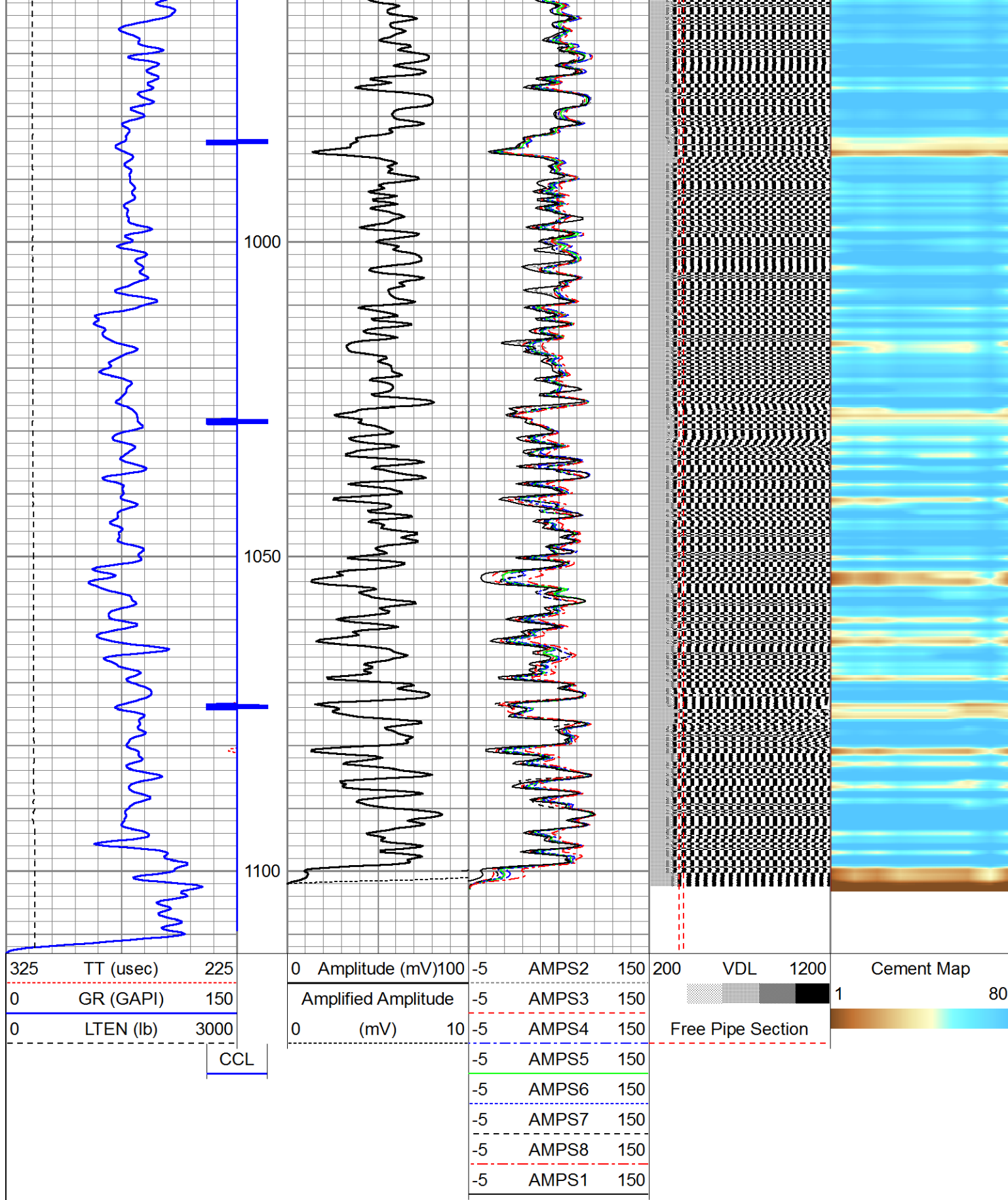












Database File: ken-megac_ganizer 10_10.db
Dataset Pathname: pass10
Presentation Format: scbl4_5
Dataset Creation: Wed Jul 08 16:13:18 2015 by Log 7.0 B1
Charted by: Depth in Feet scaled 1:240

325	TT (usec)	225
0	GR (GAPI)	150
0	LTEN (lb)	3000

CCL

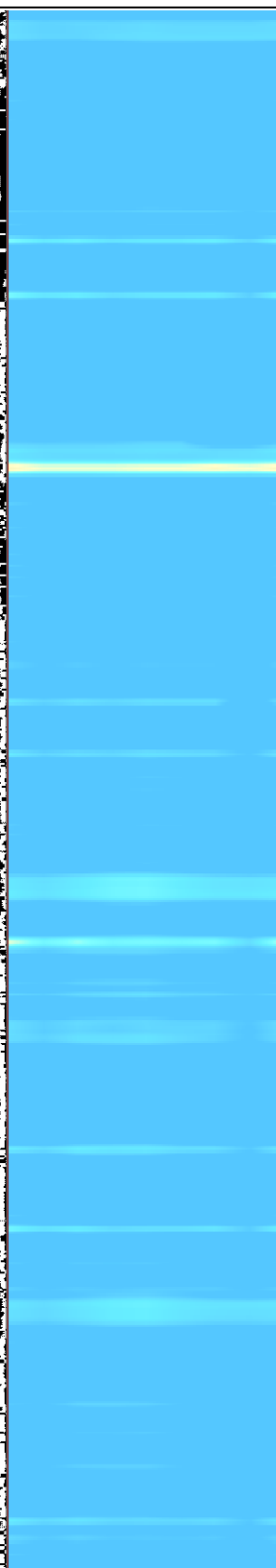
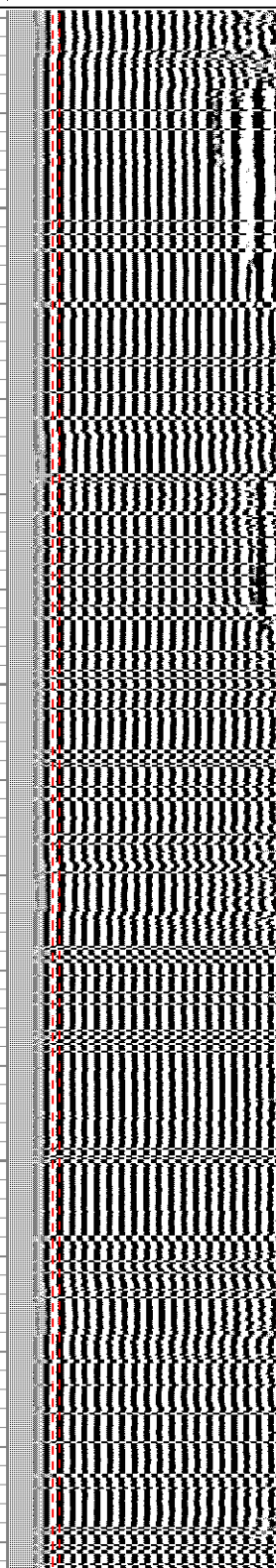
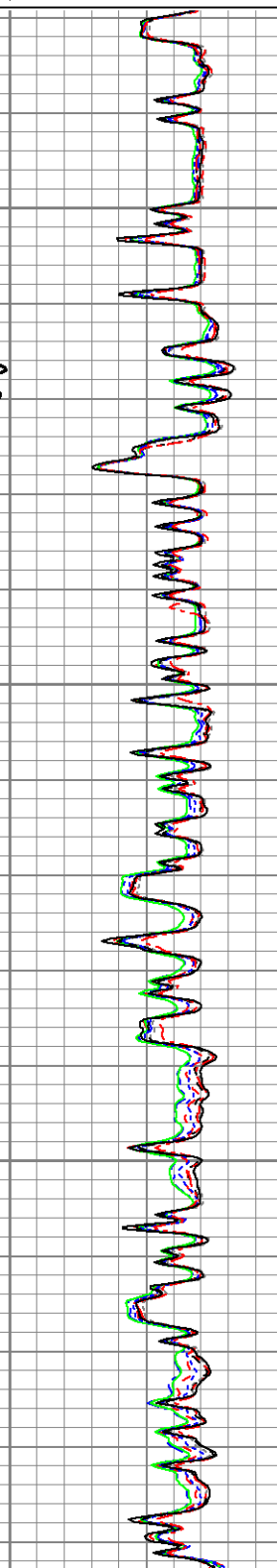
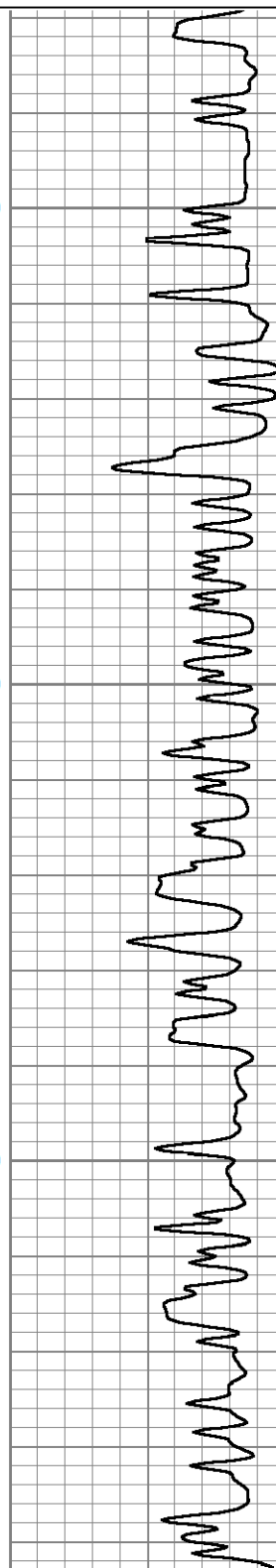
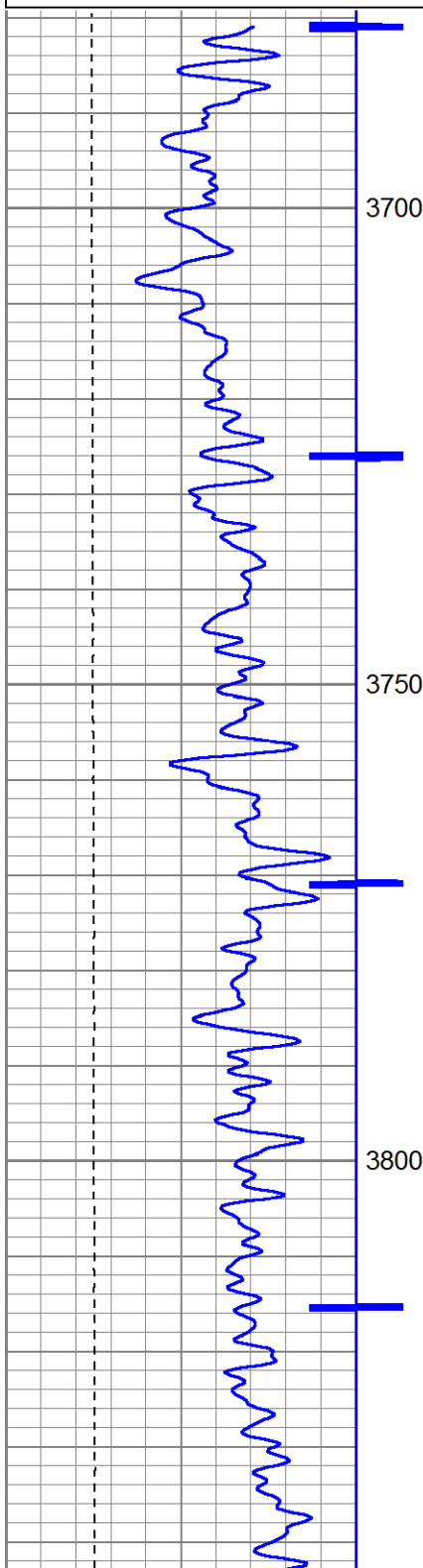
0	Amplitude (mV)	100
	Amplified Amplitude	
0	(mV)	10

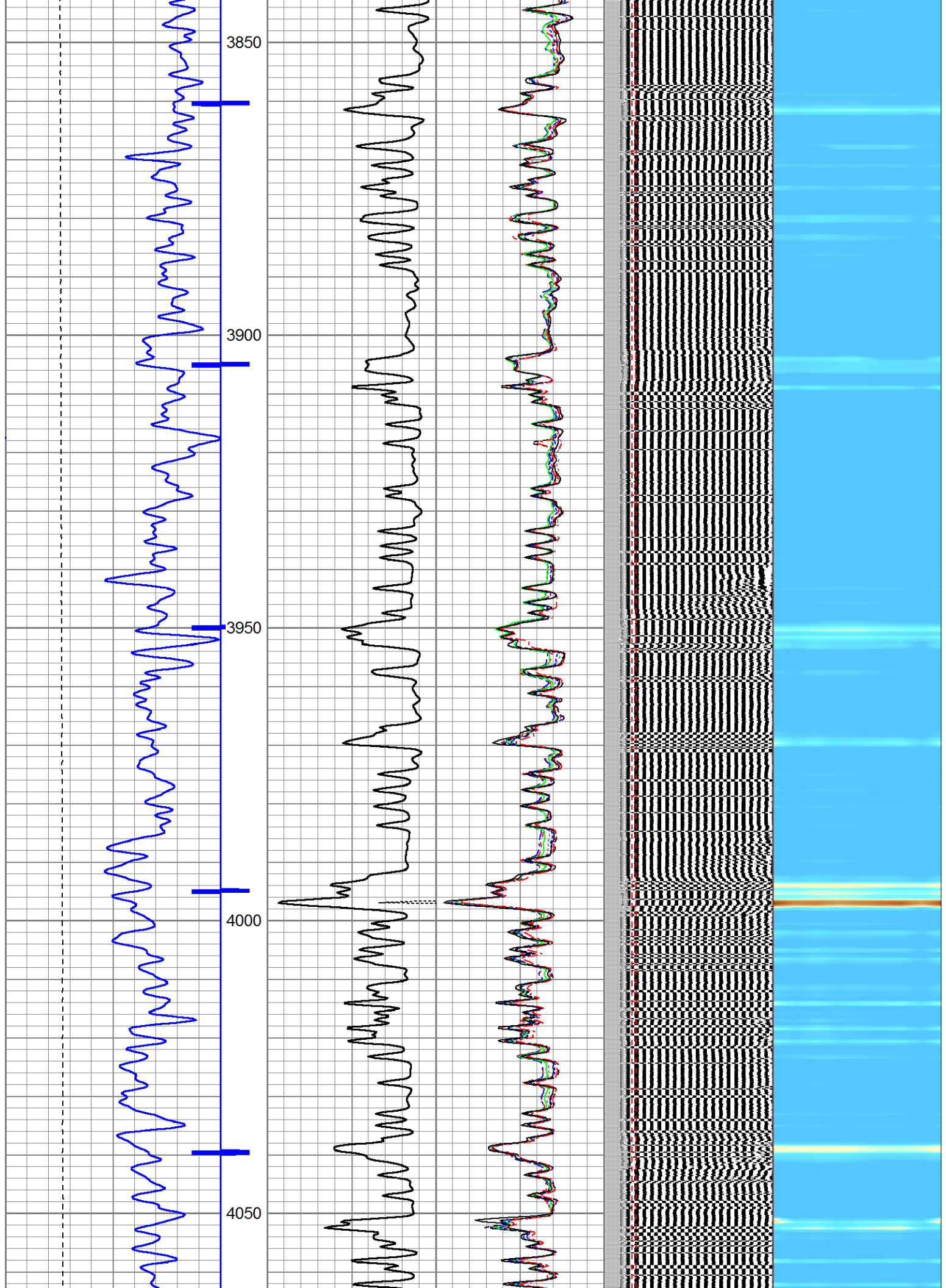
-5	AMPS2	150
-5	AMPS3	150
-5	AMPS4	150
-5	AMPS5	150
-5	AMPS6	150
-5	AMPS7	150
-5	AMPS8	150
-5	AMPS1	150

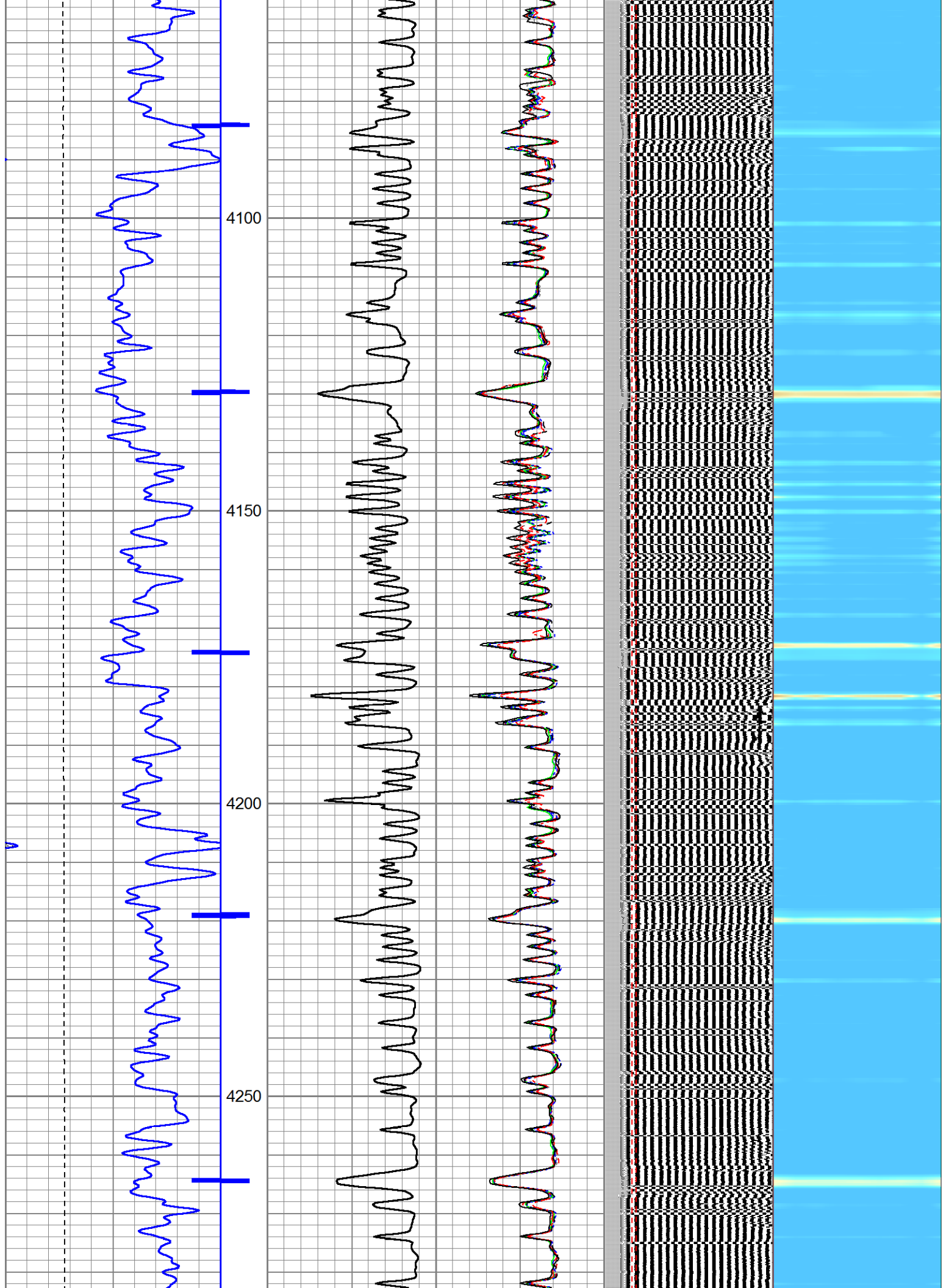
200	VDL	1200
Free Pipe Section		

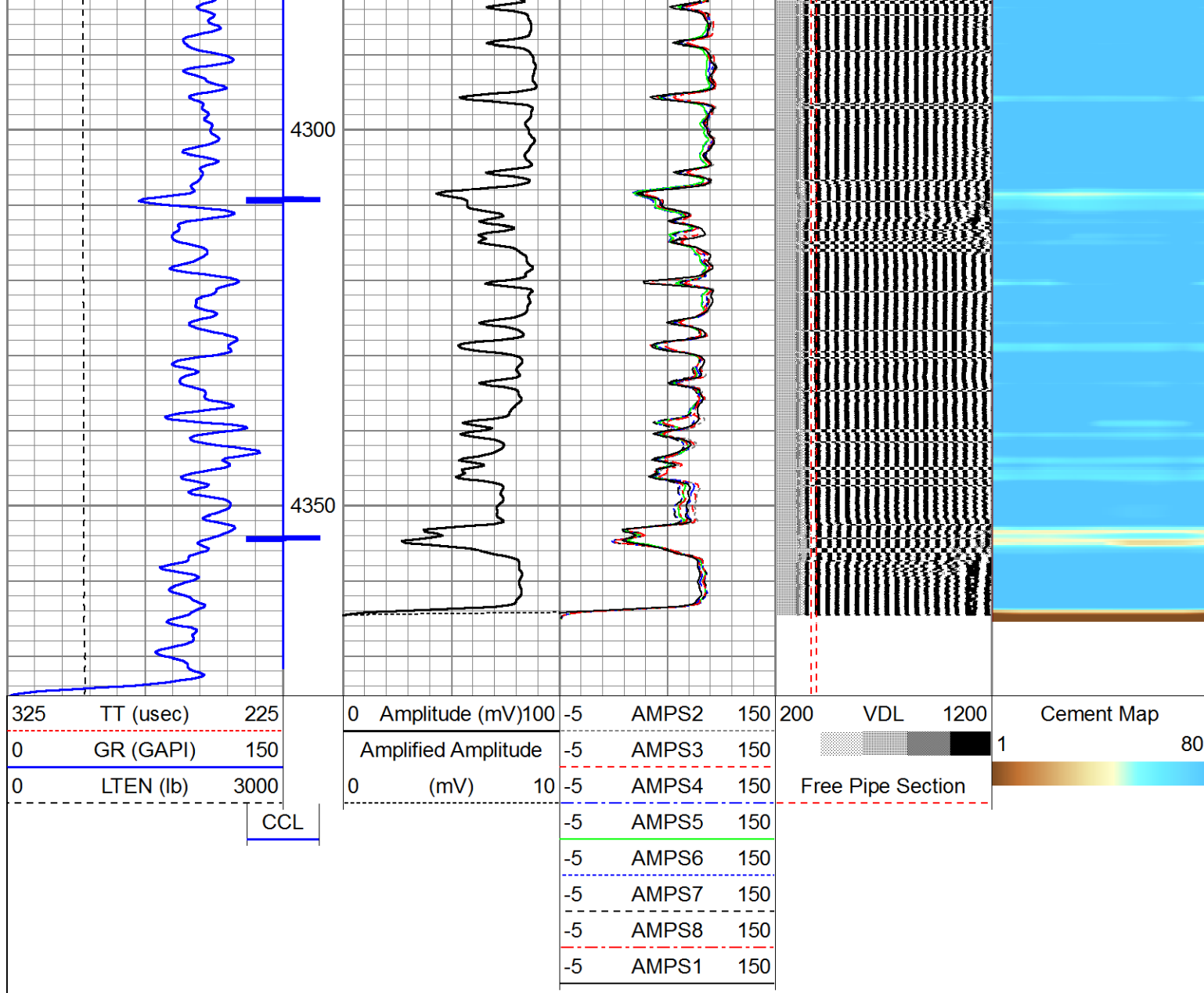
Cement Map

1 80





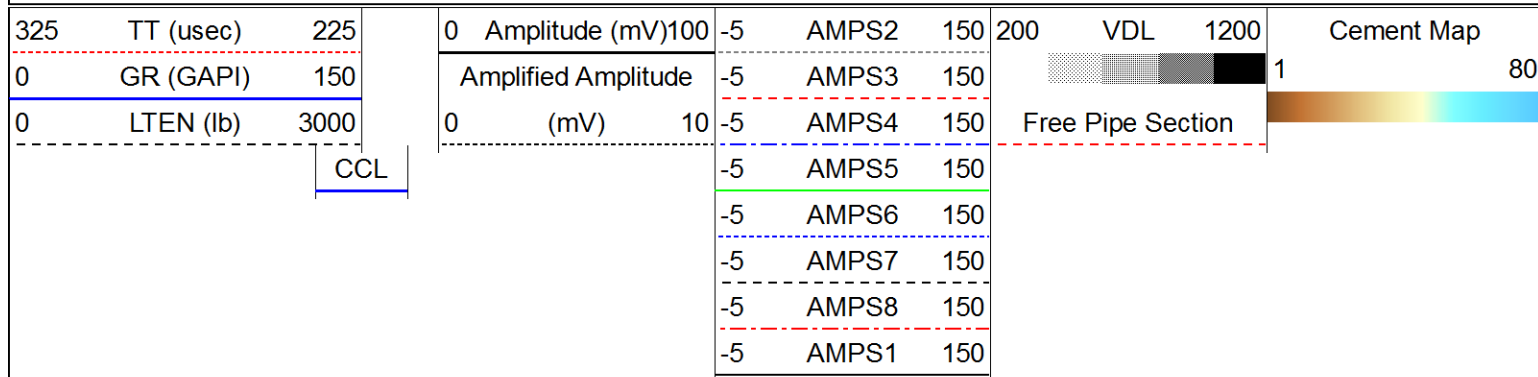


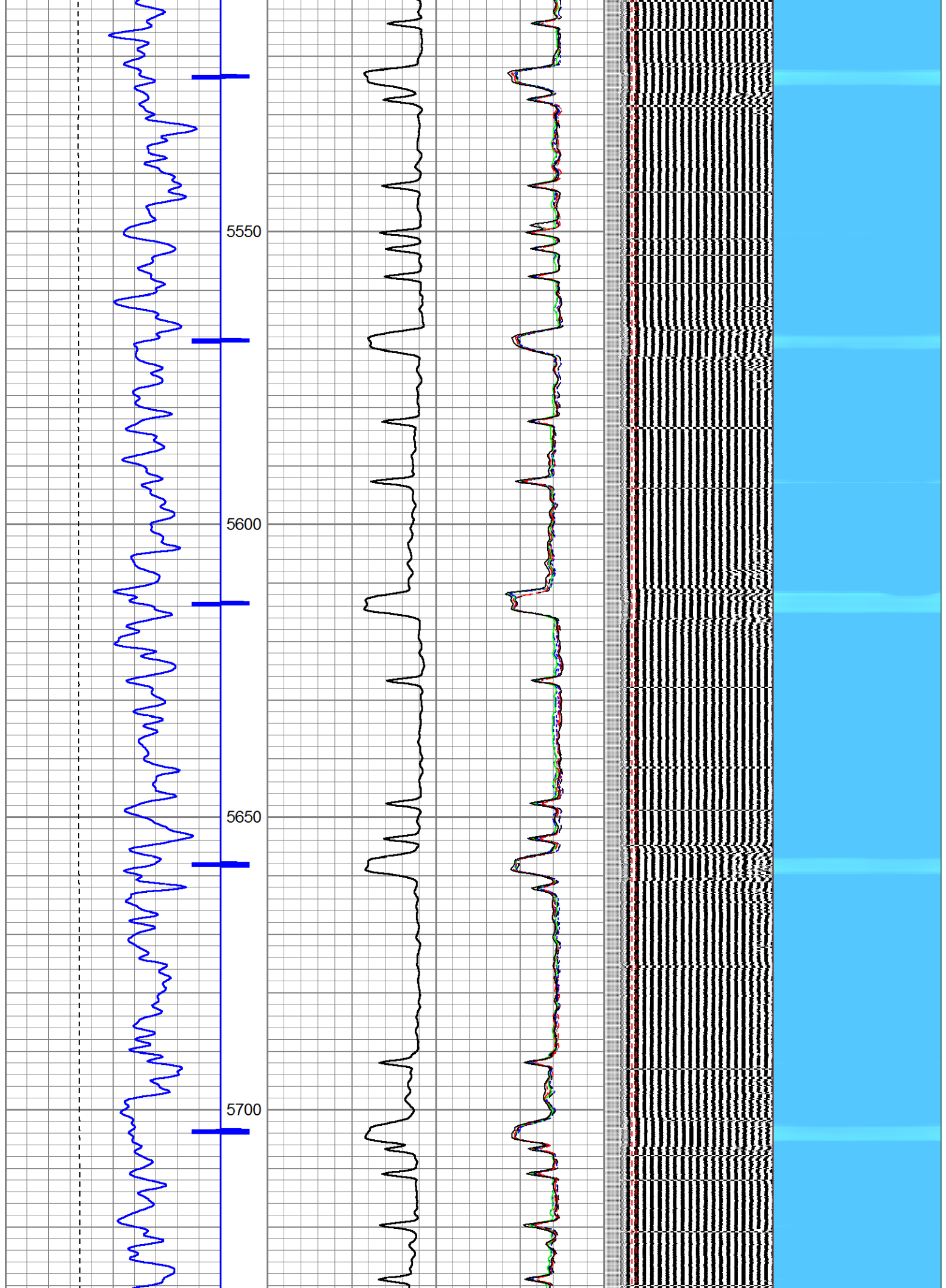


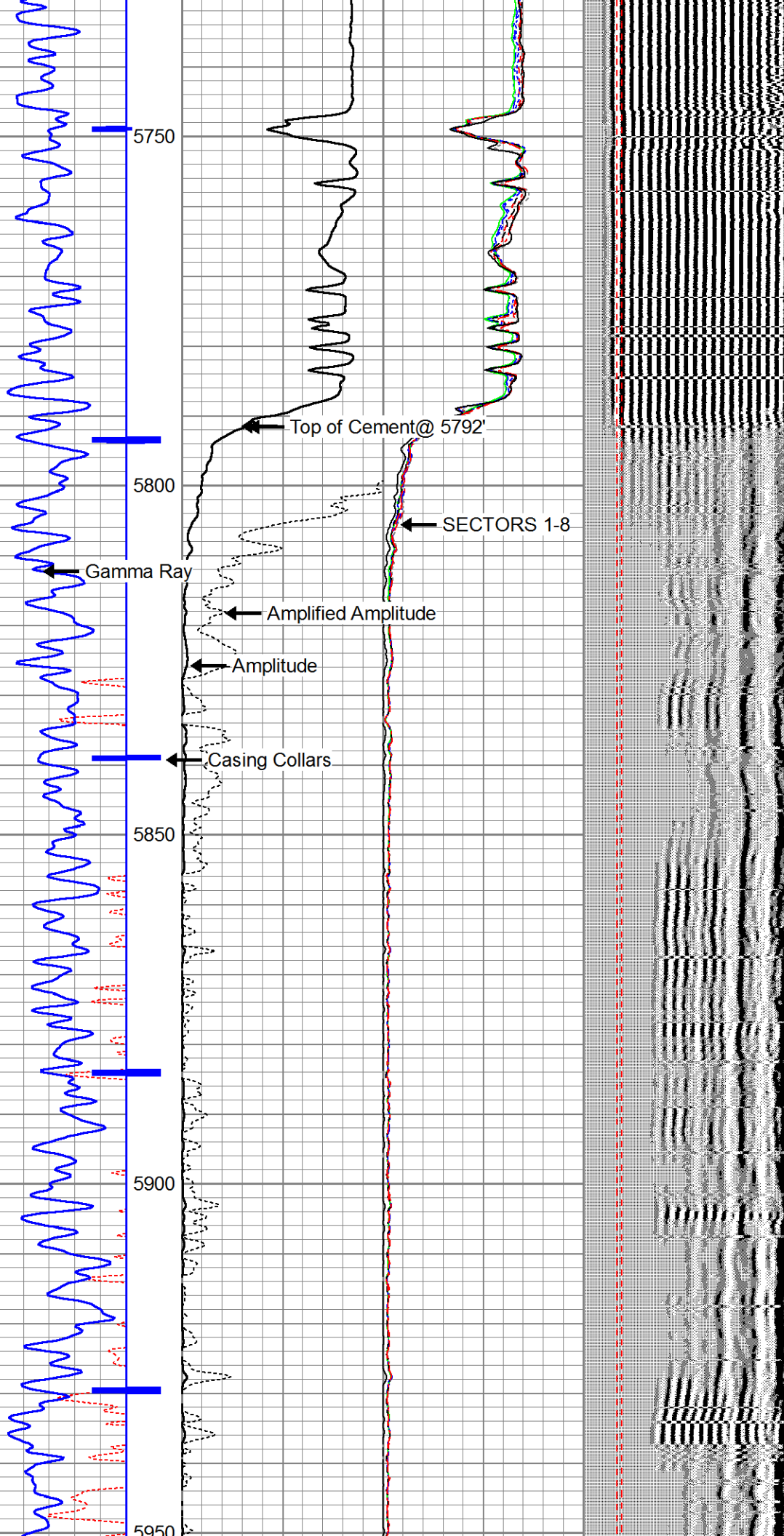
VERIFY CEMENT TOP.

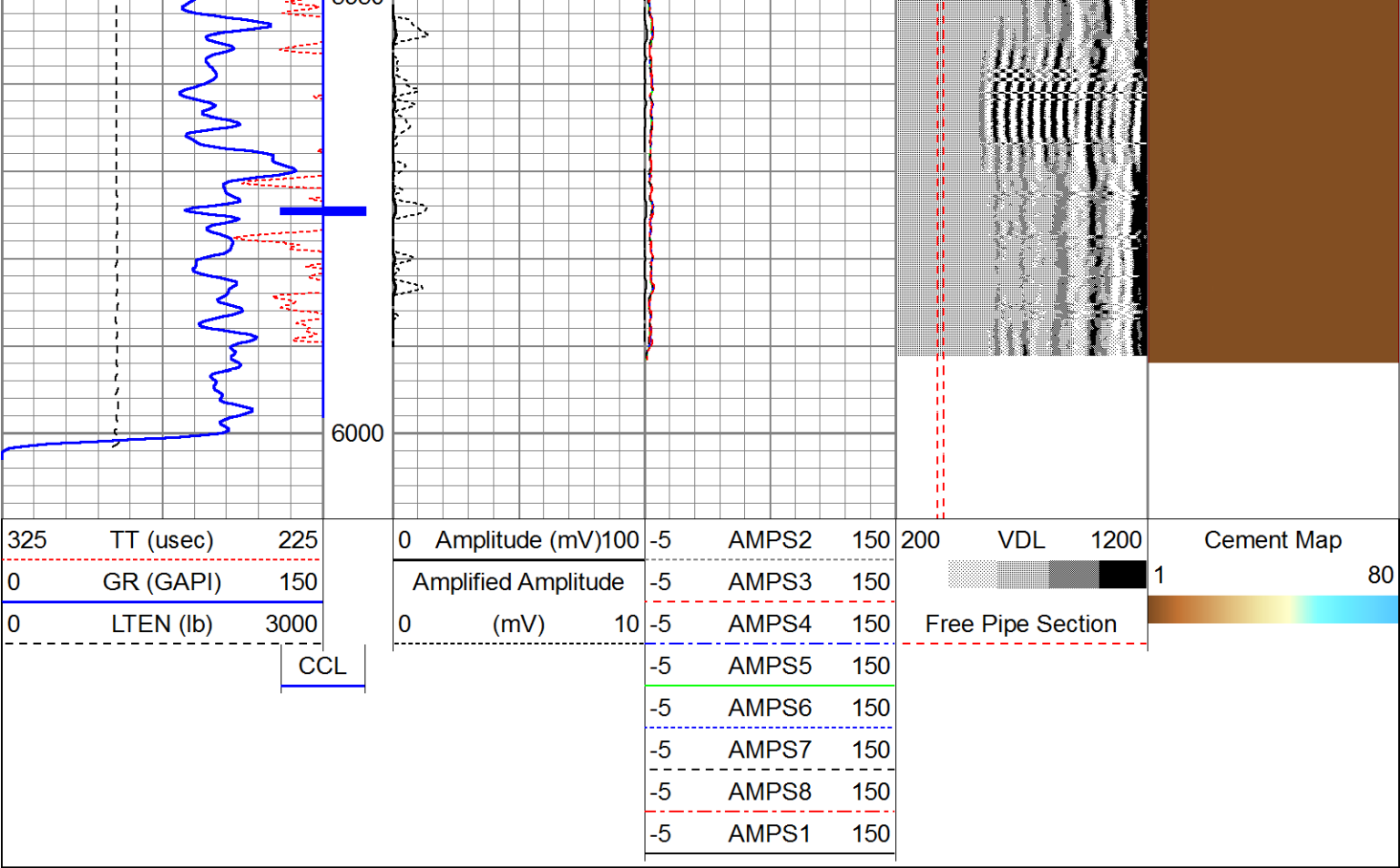
5" = 100'

Database File: kerr-mcgee_dantzker 10_16.db
 Dataset Pathname: pass8
 Presentation Format: scbl4_5
 Dataset Creation: Wed Jul 08 16:00:40 2015 by Log 7.0 B1
 Charted by: Depth in Feet scaled 1:240











Sensor	Offset (ft)	Schematic	Description	Len (ft)	OD (in)	Wt (lb)
HEADVOLT	16.25		1.4375CHD Titan Cable Head 1 7/16	1.00	1.44	10.00
			PTS275	2.83	2.75	
			RBT-Probe (110217) Probe Radii Bond Tool with Digital Telemetry	8.92	2.75	90.00
WVF3FT	11.58					
WVFCAL	11.58					
WVFS1	11.58					
WVFS2	11.58					
WVFS3	11.58					
WVFS4	11.58					
WVFS5	11.58					
WVFS6	11.58					

WVFS6	11.58		PTS275	2.83	2.75
WVFS7	11.58				
WVFS8	11.58				
WVF5FT	10.58				
CCL	3.50				
IntTemp	2.00		GR-275D_INC (275D_with_INC) 2-3/4" GR-CCL with Inclination	4.50	2.75
ACCX	1.83				
ACCY	1.83				
ACCZ	1.83				
GR	0.83				
Dataset: kerr-mcgee_dantzker 10_16.db: field/well/run1/pass12					
Total Length: 20.08 ft					
Total Weight: 100.00 lb					
O.D. 2.75 in					

Company	KERR McGEE OIL AND GAS				
Well	DANTZKER 10-16				
Field	WATTENBERG				
County	WELD	State	CO		
		RADIAL CEMENT BOND LOG			