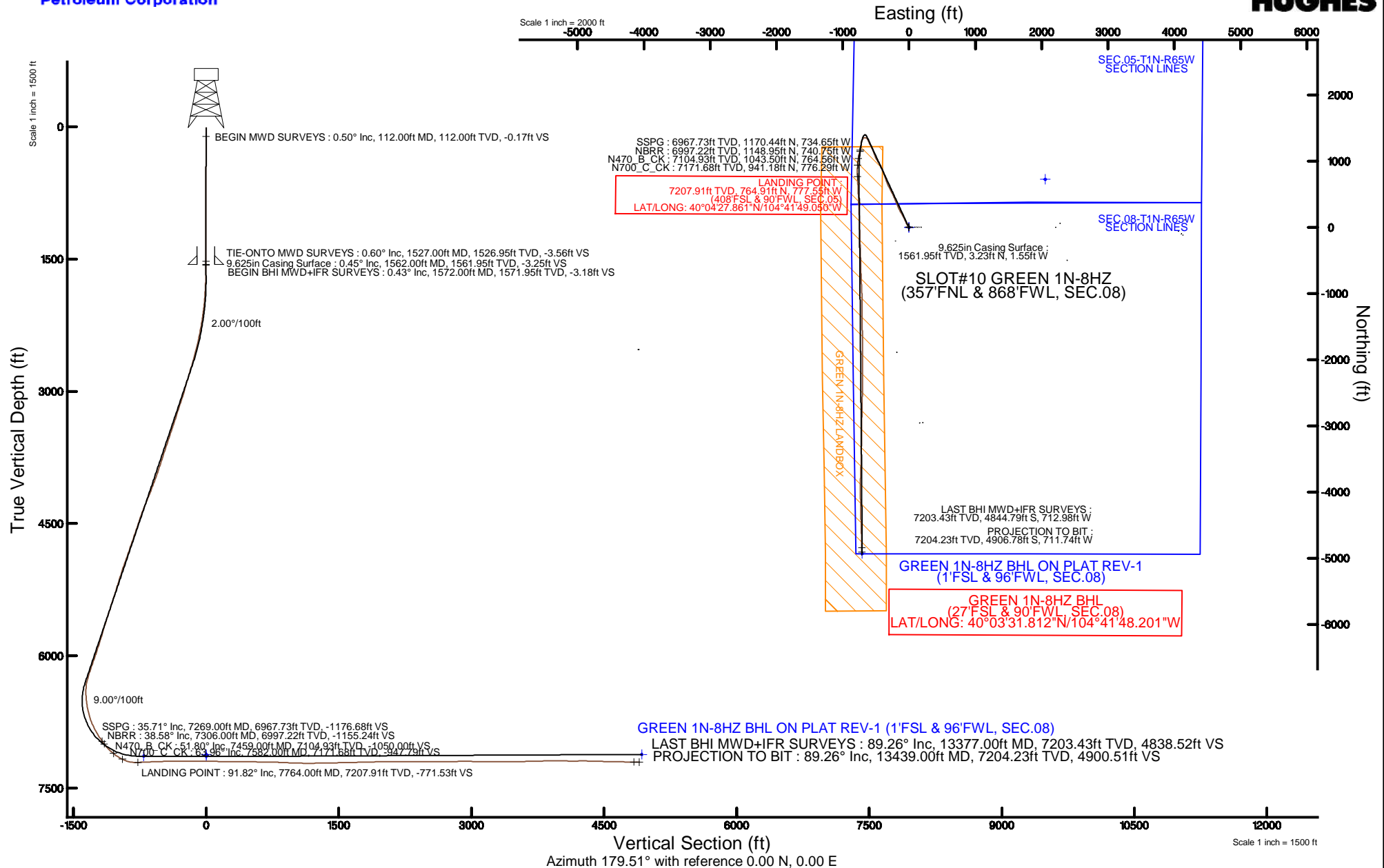


KERR-MCGEE OIL & GAS ONSHORE LP (WA)

Location: COLORADO Slot: SLOT#10 GREEN 1N-8HZ (357'FNL & 868'FWL, SEC.08)
Field: WELD COUNTY (UTM/TRUE NORTH) Well: GREEN 1N-8HZ
Facility: SEC.08-T1N-R65W Wellbore: GREEN 1N-8HZ PWB

Plot reference wellpath is GREEN 1N-8HZ (REV-A.0) PWP

True vertical depths are referenced to XTREME 24 (16'KB) (RKB)	Grid System: NAD83 / UTM Zone 13 North, US feet
Measured depths are referenced to XTREME 24 (16'KB) (RKB)	North Reference: True north
XTREME 24 (16'KB) (RKB) to Mean Sea Level: 4987 feet	Scale: True distance
Mean Sea Level to Mud line (At Slot: SLOT#10 GREEN 1N-8HZ (357'FNL & 868'FWL, SEC.08)): 0 feet	Depths are in feet
Coordinates are in feet referenced to Slot	Created by: amarc on 09/Jun/2015



REFERENCE WELLPATH IDENTIFICATION			
Operator	KERR-MCGEE OIL & GAS ONSHORE LP (WA)	Slot	SLOT#10 GREEN 1N-8HZ (357'FNL & 868'FWL, SEC.08)
Area	COLORADO	Well	GREEN 1N-8HZ
Field	WELD COUNTY (UTM/TRUE NORTH)	Wellbore	GREEN 1N-8HZ AWB <13439>
Facility	SEC.08-T1N-R65W		

REPORT SETUP INFORMATION			
Projection System	NAD83 / UTM Zone 13 North, US feet	Software System	WellArchitect® 4.0.0
North Reference	True	User	Amarcar
Scale	0.999608	Report Generated	09/Jun/2015 at 15:04
Convergence at slot	0.20° East	Database/Source file	KERR MCGEE UTM/GREEN_1N-8HZ_AWB__13439_.xml

WELLPATH LOCATION						
	Local coordinates		Grid coordinates		Geographic coordinates	
	North[ft]	East[ft]	Easting[US ft]	Northing[US ft]	Latitude	Longitude
Slot Location	385.01	-3750.23	1725971.52	14553210.20	40°04'20.302"N	104°41'39.048"W
Facility Reference Pt			1729721.63	14552838.79	40°04'16.500"N	104°40'50.808"W
Field Reference Pt			1698235.31	14552047.82	40°04'09.600"N	104°47'36.000"W

WELLPATH DATUM			
Calculation method	Minimum curvature	XTREME 24 (16'KB) (RKB) to Facility Vertical Datum	4987.00ft
Horizontal Reference Pt	Slot	XTREME 24 (16'KB) (RKB) to Mean Sea Level	4987.00ft
Vertical Reference Pt	XTREME 24 (16'KB) (RKB)	XTREME 24 (16'KB) (RKB) to Mud Line at Slot (SLOT#10 GREEN 1N-8HZ (357'FNL & 868'FWL, SEC.08))	4987.00ft
MD Reference Pt	XTREME 24 (16'KB) (RKB)	Section Origin	N 0.00, E 0.00 ft
Field Vertical Reference	Mean Sea Level	Section Azimuth	179.51°

Actual Wellpath Report

GREEN 1N-8HZ AWP

Page 2 of 7

REFERENCE WELLPATH IDENTIFICATION			
Operator	KERR-MCGEE OIL & GAS ONSHORE LP (WA)	Slot	SLOT#10 GREEN 1N-8HZ (357'FNL & 868'FWL, SEC.08)
Area	COLORADO	Well	GREEN 1N-8HZ
Field	WELD COUNTY (UTM/TRUE NORTH)	Wellbore	GREEN 1N-8HZ AWB <13439>
Facility	SEC.08-T1N-R65W		

WELLPATH DATA (160 stations) † = interpolated/extrapolated station										
MD [ft]	Inclination [°]	Azimuth [°]	TVD [ft]	Vert Sect [ft]	North [ft]	East [ft]	Latitude	Longitude	DLS [°/100ft]	Comments
0.00†	0.000	65.200	0.00	0.00	0.00	0.00	40°04'20.302"N	104°41'39.048"W	0.00	
16.00	0.000	65.200	16.00	0.00	0.00	0.00	40°04'20.302"N	104°41'39.048"W	0.00	
112.00	0.500	65.200	112.00	-0.17	0.18	0.38	40°04'20.304"N	104°41'39.043"W	0.52	BEGIN MWD SURVEYS
170.00	0.400	88.900	170.00	-0.28	0.29	0.81	40°04'20.305"N	104°41'39.038"W	0.36	
228.00	0.200	84.900	228.00	-0.29	0.30	1.12	40°04'20.305"N	104°41'39.034"W	0.35	
288.00	0.300	19.000	288.00	-0.45	0.46	1.27	40°04'20.307"N	104°41'39.032"W	0.47	
368.00	0.500	15.200	367.99	-0.98	0.99	1.43	40°04'20.312"N	104°41'39.030"W	0.25	
448.00	0.800	350.900	447.99	-1.87	1.88	1.43	40°04'20.321"N	104°41'39.030"W	0.50	
528.00	0.900	0.200	527.98	-3.05	3.06	1.35	40°04'20.332"N	104°41'39.031"W	0.21	
608.00	0.500	32.700	607.97	-3.97	3.98	1.54	40°04'20.341"N	104°41'39.028"W	0.69	
688.00	0.400	7.600	687.97	-4.54	4.55	1.76	40°04'20.347"N	104°41'39.025"W	0.27	
768.00	0.200	341.600	767.97	-4.95	4.96	1.76	40°04'20.351"N	104°41'39.025"W	0.30	
848.00	0.100	324.700	847.97	-5.14	5.15	1.67	40°04'20.353"N	104°41'39.026"W	0.14	
929.00	0.400	217.300	928.97	-4.97	4.98	1.46	40°04'20.351"N	104°41'39.029"W	0.54	
1009.00	0.400	240.900	1008.97	-4.62	4.63	1.05	40°04'20.348"N	104°41'39.035"W	0.20	
1089.00	0.300	166.100	1088.97	-4.28	4.29	0.85	40°04'20.344"N	104°41'39.037"W	0.54	
1169.00	0.700	278.300	1168.96	-4.15	4.15	0.42	40°04'20.343"N	104°41'39.043"W	1.07	
1249.00	0.700	297.200	1248.96	-4.45	4.45	-0.50	40°04'20.346"N	104°41'39.054"W	0.29	
1329.00	0.300	226.700	1328.96	-4.54	4.53	-1.09	40°04'20.347"N	104°41'39.062"W	0.83	
1409.00	0.300	250.600	1408.95	-4.33	4.31	-1.44	40°04'20.345"N	104°41'39.066"W	0.16	
1489.00	0.500	167.900	1488.95	-3.92	3.90	-1.56	40°04'20.341"N	104°41'39.068"W	0.69	
1527.00	0.600	175.500	1526.95	-3.56	3.54	-1.51	40°04'20.337"N	104°41'39.067"W	0.33	TIE-ONTO MWD SURVEYS
1572.00	0.430	213.970	1571.95	-3.18	3.17	-1.58	40°04'20.333"N	104°41'39.068"W	0.83	BEGIN BHI MWD+IFR SURVEYS
1667.00	1.320	325.600	1666.94	-3.80	3.78	-2.40	40°04'20.339"N	104°41'39.079"W	1.61	
1761.00	2.940	318.520	1760.87	-6.51	6.47	-4.61	40°04'20.366"N	104°41'39.107"W	1.74	
1856.00	4.320	316.410	1855.68	-10.97	10.89	-8.69	40°04'20.410"N	104°41'39.160"W	1.46	
1951.00	6.060	325.060	1950.29	-17.71	17.59	-14.03	40°04'20.476"N	104°41'39.228"W	2.00	
2046.00	7.150	327.540	2044.66	-26.86	26.69	-20.08	40°04'20.566"N	104°41'39.306"W	1.19	
2141.00	8.920	331.150	2138.72	-38.36	38.13	-26.80	40°04'20.679"N	104°41'39.393"W	1.94	
2236.00	10.740	332.740	2232.32	-52.75	52.46	-34.41	40°04'20.820"N	104°41'39.491"W	1.94	
2330.00	12.210	334.160	2324.44	-69.55	69.19	-42.76	40°04'20.986"N	104°41'39.598"W	1.59	
2425.00	13.390	335.810	2417.08	-88.70	88.26	-51.64	40°04'21.174"N	104°41'39.712"W	1.30	
2519.00	15.000	334.710	2508.21	-109.71	109.19	-61.30	40°04'21.381"N	104°41'39.837"W	1.74	
2614.00	16.720	336.170	2599.59	-133.42	132.81	-72.08	40°04'21.614"N	104°41'39.975"W	1.86	
2709.00	17.900	331.090	2690.29	-158.81	158.09	-84.66	40°04'21.864"N	104°41'40.137"W	2.02	
2804.00	19.600	330.290	2780.24	-185.56	184.72	-99.61	40°04'22.127"N	104°41'40.329"W	1.81	
2993.00	16.960	329.350	2959.69	-237.07	235.97	-129.38	40°04'22.634"N	104°41'40.712"W	1.41	
3088.00	19.110	334.870	3050.02	-263.19	261.98	-143.05	40°04'22.891"N	104°41'40.888"W	2.89	
3183.00	20.520	335.310	3139.40	-292.51	291.19	-156.61	40°04'23.180"N	104°41'41.063"W	1.49	
3278.00	19.540	337.120	3228.65	-322.39	320.95	-169.74	40°04'23.474"N	104°41'41.231"W	1.22	
3373.00	19.140	336.500	3318.29	-351.42	349.87	-182.13	40°04'23.759"N	104°41'41.391"W	0.47	
3467.00	19.890	336.190	3406.89	-380.28	378.63	-194.73	40°04'24.044"N	104°41'41.553"W	0.81	
3562.00	19.710	338.420	3496.27	-410.07	408.32	-207.15	40°04'24.337"N	104°41'41.713"W	0.82	
3657.00	19.750	339.080	3585.70	-440.06	438.21	-218.77	40°04'24.632"N	104°41'41.862"W	0.24	
3752.00	19.080	336.950	3675.30	-469.44	467.49	-230.58	40°04'24.922"N	104°41'42.014"W	1.03	

REFERENCE WELLPATH IDENTIFICATION			
Operator	KERR-MCGEE OIL & GAS ONSHORE LP (WA)	Slot	SLOT#10 GREEN 1N-8HZ (357'FNL & 868'FWL, SEC.08)
Area	COLORADO	Well	GREEN 1N-8HZ
Field	WELD COUNTY (UTM/TRUE NORTH)	Wellbore	GREEN 1N-8HZ AWP <13439>
Facility	SEC.08-T1N-R65W		

WELLPATH DATA (160 stations) † = interpolated/extrapolated station										
MD [ft]	Inclination [°]	Azimuth [°]	TVD [ft]	Vert Sect [ft]	North [ft]	East [ft]	Latitude	Longitude	DLS [°/100ft]	Comments
3847.00	19.250	331.960	3765.04	-497.67	495.60	-244.02	40°04'25.200"N	104°41'42.187"W	1.73	
3942.00	20.640	335.450	3854.34	-526.84	524.65	-258.34	40°04'25.487"N	104°41'42.371"W	1.93	
4037.00	21.670	334.210	3942.94	-557.99	555.68	-272.93	40°04'25.793"N	104°41'42.559"W	1.18	
4131.00	22.660	330.130	4029.99	-589.46	587.01	-289.50	40°04'26.103"N	104°41'42.772"W	1.95	
4226.00	23.010	332.160	4117.55	-621.90	619.30	-307.29	40°04'26.422"N	104°41'43.001"W	0.91	
4321.00	24.150	337.770	4204.63	-656.45	653.71	-323.31	40°04'26.762"N	104°41'43.207"W	2.65	
4416.00	23.640	338.650	4291.48	-692.30	689.44	-337.60	40°04'27.115"N	104°41'43.391"W	0.65	
4511.00	21.570	338.640	4379.18	-726.42	723.44	-350.90	40°04'27.451"N	104°41'43.562"W	2.18	
4606.00	18.490	345.500	4468.44	-757.36	754.30	-361.03	40°04'27.756"N	104°41'43.692"W	4.07	
4701.00	18.950	345.290	4558.41	-786.93	783.81	-368.72	40°04'28.048"N	104°41'43.791"W	0.49	
4796.00	20.220	339.440	4647.92	-817.31	814.10	-378.40	40°04'28.347"N	104°41'43.916"W	2.46	
4891.00	20.550	336.470	4736.97	-848.07	844.76	-390.83	40°04'28.650"N	104°41'44.075"W	1.14	
4985.00	20.230	335.990	4825.08	-878.16	874.74	-404.03	40°04'28.946"N	104°41'44.245"W	0.38	
5080.00	21.900	335.820	4913.73	-909.44	905.90	-417.97	40°04'29.254"N	104°41'44.425"W	1.76	
5175.00	21.520	329.370	5002.01	-940.74	937.06	-434.10	40°04'29.562"N	104°41'44.632"W	2.54	
5270.00	19.520	328.950	5090.98	-969.48	965.66	-451.17	40°04'29.845"N	104°41'44.852"W	2.11	
5365.00	19.300	329.660	5180.58	-996.76	992.80	-467.29	40°04'30.113"N	104°41'45.059"W	0.34	
5460.00	19.770	329.430	5270.11	-1024.28	1020.19	-483.39	40°04'30.384"N	104°41'45.266"W	0.50	
5555.00	20.310	332.480	5359.36	-1052.87	1048.64	-499.18	40°04'30.665"N	104°41'45.469"W	1.24	
5649.00	18.890	341.590	5447.93	-1081.89	1077.56	-511.52	40°04'30.951"N	104°41'45.628"W	3.58	
5744.00	19.240	339.350	5537.72	-1111.22	1106.80	-521.90	40°04'31.240"N	104°41'45.762"W	0.85	
5838.00	18.110	340.530	5626.77	-1139.57	1135.06	-532.23	40°04'31.519"N	104°41'45.895"W	1.27	
5933.00	18.030	336.580	5717.09	-1167.08	1162.48	-543.00	40°04'31.790"N	104°41'46.033"W	1.29	
6027.00	18.100	334.040	5806.46	-1193.66	1188.95	-555.17	40°04'32.051"N	104°41'46.190"W	0.84	
6122.00	19.440	332.650	5896.40	-1221.09	1216.26	-568.90	40°04'32.321"N	104°41'46.366"W	1.49	
6217.00	20.730	332.800	5985.62	-1250.21	1245.26	-583.85	40°04'32.608"N	104°41'46.559"W	1.36	
6312.00	21.080	336.410	6074.37	-1280.94	1275.87	-598.37	40°04'32.910"N	104°41'46.745"W	1.40	
6406.00	20.550	333.540	6162.24	-1311.33	1306.14	-612.48	40°04'33.209"N	104°41'46.927"W	1.22	
6501.00	18.210	335.590	6251.85	-1339.89	1334.58	-626.05	40°04'33.491"N	104°41'47.101"W	2.56	
6595.00	16.340	290.500	6342.00	-1358.13	1352.67	-644.59	40°04'33.669"N	104°41'47.340"W	14.03	
6690.00	15.530	261.560	6433.49	-1361.17	1355.49	-669.72	40°04'33.697"N	104°41'47.663"W	8.32	
6784.00	11.410	233.330	6524.98	-1353.93	1348.08	-689.66	40°04'33.624"N	104°41'47.920"W	8.13	
6879.00	13.400	202.490	6617.86	-1338.23	1332.28	-701.42	40°04'33.468"N	104°41'48.071"W	7.18	
6974.00	19.670	204.740	6708.89	-1313.60	1307.56	-712.33	40°04'33.223"N	104°41'48.211"W	6.63	
7069.00	26.240	183.770	6796.46	-1278.10	1271.98	-720.43	40°04'32.872"N	104°41'48.316"W	10.95	
7164.00	31.070	183.890	6879.80	-1232.69	1226.54	-723.47	40°04'32.423"N	104°41'48.355"W	5.08	
7258.00	34.860	196.680	6958.75	-1182.76	1176.53	-732.85	40°04'31.929"N	104°41'48.475"W	8.41	
7269.00†	35.712	196.355	6967.73	-1176.68	1170.44	-734.65	40°04'31.868"N	104°41'48.498"W	7.93	SSPG
7306.00†	38.583	195.354	6997.22	-1155.24	1148.95	-740.75	40°04'31.656"N	104°41'48.577"W	7.93	NBRR
7353.00	42.240	194.250	7033.00	-1125.85	1119.49	-748.52	40°04'31.365"N	104°41'48.677"W	7.93	
7416.00	48.290	191.470	7077.32	-1082.32	1075.88	-758.42	40°04'30.934"N	104°41'48.804"W	10.10	
7448.00	50.910	190.410	7098.06	-1058.44	1051.95	-763.04	40°04'30.697"N	104°41'48.864"W	8.57	
7459.00†	51.803	190.004	7104.93	-1050.00	1043.50	-764.56	40°04'30.614"N	104°41'48.883"W	8.62	N470_B_CK
7479.00	53.430	189.290	7117.07	-1034.36	1027.83	-767.22	40°04'30.459"N	104°41'48.917"W	8.62	
7543.00	58.510	185.440	7152.89	-981.84	975.26	-773.97	40°04'29.940"N	104°41'49.004"W	9.37	

REFERENCE WELLPATH IDENTIFICATION

Operator	KERR-MCGEE OIL & GAS ONSHORE LP (WA)	Slot	SLOT#10 GREEN 1N-8HZ (357'FNL & 868'FWL, SEC.08)
Area	COLORADO	Well	GREEN 1N-8HZ
Field	WELD COUNTY (UTM/TRUE NORTH)	Wellbore	GREEN 1N-8HZ AWB <13439>
Facility	SEC.08-T1N-R65W		

WELLPATH DATA (160 stations) † = interpolated/extrapolated station

MD [ft]	Inclination [°]	Azimuth [°]	TVD [ft]	Vert Sect [ft]	North [ft]	East [ft]	Latitude	Longitude	DLS [°/100ft]	Comments
7574.00	62.720	182.950	7168.09	-954.93	948.32	-775.93	40°04'29.673"N	104°41'49.029"W	15.28	
7582.00†	63.960	182.804	7171.68	-947.79	941.18	-776.29	40°04'29.603"N	104°41'49.034"W	15.59	N700_C_CHK
7637.00	72.490	181.870	7192.07	-896.82	890.20	-778.36	40°04'29.099"N	104°41'49.061"W	15.59	
7718.00	85.570	178.870	7207.45	-817.49	810.86	-778.82	40°04'28.315"N	104°41'49.066"W	16.55	
7747.00	90.990	178.360	7208.32	-788.52	781.89	-778.12	40°04'28.029"N	104°41'49.057"W	18.77	
7764.00†	91.817	177.768	7207.91	-771.53	764.91	-777.55	40°04'27.861"N	104°41'49.050"W	5.98	LANDING POINT
7776.00	92.400	177.350	7207.46	-759.55	752.93	-777.04	40°04'27.742"N	104°41'49.043"W	5.98	
7800.00	92.470	177.190	7206.45	-735.59	728.98	-775.89	40°04'27.506"N	104°41'49.029"W	0.73	
7832.00	92.740	177.150	7204.99	-703.65	697.05	-774.32	40°04'27.190"N	104°41'49.008"W	0.85	
7863.00	92.250	177.220	7203.64	-672.70	666.12	-772.80	40°04'26.885"N	104°41'48.989"W	1.60	
7926.00	92.680	176.940	7200.93	-609.82	603.26	-769.59	40°04'26.263"N	104°41'48.948"W	0.81	
8021.00	91.690	177.710	7197.31	-514.96	508.43	-765.16	40°04'25.326"N	104°41'48.891"W	1.32	
8116.00	90.340	177.590	7195.63	-420.02	413.53	-761.26	40°04'24.388"N	104°41'48.840"W	1.43	
8211.00	89.230	177.410	7195.98	-325.08	318.62	-757.12	40°04'23.451"N	104°41'48.787"W	1.18	
8306.00	89.880	177.550	7196.72	-230.15	223.72	-752.94	40°04'22.513"N	104°41'48.733"W	0.70	
8401.00	90.770	177.830	7196.18	-135.20	128.80	-749.11	40°04'21.575"N	104°41'48.684"W	0.98	
8496.00	90.460	178.770	7195.16	-40.23	33.84	-746.30	40°04'20.636"N	104°41'48.648"W	1.04	
8591.00	89.510	178.480	7195.19	54.76	-61.13	-744.02	40°04'19.698"N	104°41'48.618"W	1.05	
8686.00	88.250	178.380	7197.04	149.72	-156.07	-741.41	40°04'18.760"N	104°41'48.585"W	1.33	
8780.00	89.010	178.180	7199.29	243.68	-250.00	-738.59	40°04'17.831"N	104°41'48.549"W	0.84	
8875.00	90.060	177.980	7200.06	338.64	-344.94	-735.41	40°04'16.893"N	104°41'48.508"W	1.13	
8970.00	89.910	177.990	7200.09	433.61	-439.88	-732.07	40°04'15.955"N	104°41'48.465"W	0.16	
9065.00	88.920	178.730	7201.06	528.58	-534.84	-729.35	40°04'15.017"N	104°41'48.430"W	1.20	
9160.00	88.830	178.230	7202.92	623.55	-629.79	-726.83	40°04'14.078"N	104°41'48.397"W	0.53	
9255.00	89.450	178.140	7204.35	718.51	-724.73	-723.82	40°04'13.140"N	104°41'48.358"W	0.66	
9350.00	87.690	177.310	7206.72	813.43	-819.62	-720.06	40°04'12.202"N	104°41'48.310"W	2.05	
9444.00	87.100	176.980	7210.99	907.25	-913.40	-715.38	40°04'11.275"N	104°41'48.250"W	0.72	
9539.00	88.270	177.550	7214.83	1002.10	-1008.22	-710.85	40°04'10.338"N	104°41'48.191"W	1.37	
9634.00	89.110	178.600	7217.00	1097.04	-1103.14	-707.66	40°04'09.400"N	104°41'48.150"W	1.42	
9729.00	90.650	180.230	7217.20	1192.04	-1198.13	-706.69	40°04'08.462"N	104°41'48.138"W	2.36	
9823.00	90.770	180.140	7216.03	1286.02	-1292.12	-706.99	40°04'07.533"N	104°41'48.142"W	0.16	
9918.00	91.290	180.030	7214.33	1381.00	-1387.10	-707.13	40°04'06.594"N	104°41'48.144"W	0.56	
10012.00	91.690	178.860	7211.88	1474.97	-1481.06	-706.22	40°04'05.666"N	104°41'48.132"W	1.32	
10107.00	90.860	179.380	7209.77	1569.94	-1576.03	-704.76	40°04'04.727"N	104°41'48.113"W	1.03	
10202.00	91.390	178.470	7207.90	1664.92	-1670.99	-702.98	40°04'03.789"N	104°41'48.090"W	1.11	
10296.00	91.630	178.500	7205.43	1758.87	-1764.93	-700.50	40°04'02.861"N	104°41'48.058"W	0.26	
10391.00	91.140	179.440	7203.13	1853.84	-1859.88	-698.79	40°04'01.922"N	104°41'48.036"W	1.12	
10486.00	92.340	180.040	7200.25	1948.79	-1954.83	-698.36	40°04'00.984"N	104°41'48.030"W	1.41	
10581.00	90.620	179.990	7197.79	2043.75	-2049.80	-698.39	40°04'00.045"N	104°41'48.031"W	1.81	
10675.00	89.200	180.030	7197.94	2137.75	-2143.80	-698.40	40°03'59.116"N	104°41'48.031"W	1.51	
10770.00	89.720	180.370	7198.84	2232.73	-2238.79	-698.73	40°03'58.178"N	104°41'48.035"W	0.65	
10865.00	90.890	181.030	7198.33	2327.71	-2333.78	-699.89	40°03'57.239"N	104°41'48.050"W	1.41	
10960.00	89.600	181.320	7197.92	2422.67	-2428.76	-701.84	40°03'56.300"N	104°41'48.075"W	1.39	
11055.00	90.430	181.510	7197.90	2517.61	-2523.73	-704.19	40°03'55.362"N	104°41'48.105"W	0.90	
11150.00	90.590	180.980	7197.05	2612.57	-2618.70	-706.25	40°03'54.423"N	104°41'48.132"W	0.58	

REFERENCE WELLPATH IDENTIFICATION

Operator	KERR-MCGEE OIL & GAS ONSHORE LP (WA)	Slot	SLOT#10 GREEN 1N-8HZ (357'FNL & 868'FWL, SEC.08)
Area	COLORADO	Well	GREEN 1N-8HZ
Field	WELD COUNTY (UTM/TRUE NORTH)	Wellbore	GREEN 1N-8HZ AWP <13439>
Facility	SEC.08-T1N-R65W		

WELLPATH DATA (160 stations)

MD [ft]	Inclination [°]	Azimuth [°]	TVD [ft]	Vert Sect [ft]	North [ft]	East [ft]	Latitude	Longitude	DLS [°/100ft]	Comments
11245.00	89.600	181.000	7196.90	2707.53	-2713.69	-707.89	40°03'53.485"N	104°41'48.153"W	1.04	
11340.00	90.310	181.560	7196.97	2802.49	-2808.66	-710.02	40°03'52.546"N	104°41'48.180"W	0.95	
11435.00	90.520	181.490	7196.28	2897.43	-2903.63	-712.54	40°03'51.608"N	104°41'48.213"W	0.23	
11529.00	89.170	180.880	7196.54	2991.38	-2997.60	-714.49	40°03'50.679"N	104°41'48.237"W	1.58	
11624.00	89.260	180.700	7197.84	3086.35	-3092.58	-715.80	40°03'49.740"N	104°41'48.254"W	0.21	
11718.00	89.510	180.530	7198.85	3180.33	-3186.57	-716.81	40°03'48.812"N	104°41'48.267"W	0.32	
11813.00	89.750	180.770	7199.46	3275.31	-3281.56	-717.88	40°03'47.873"N	104°41'48.281"W	0.36	
11908.00	90.460	180.720	7199.29	3370.28	-3376.56	-719.12	40°03'46.934"N	104°41'48.297"W	0.75	
12003.00	90.460	181.180	7198.52	3465.25	-3471.54	-720.69	40°03'45.995"N	104°41'48.317"W	0.48	
12097.00	90.800	181.760	7197.49	3559.19	-3565.50	-723.11	40°03'45.067"N	104°41'48.348"W	0.72	
12192.00	91.050	181.970	7195.96	3654.10	-3660.44	-726.20	40°03'44.129"N	104°41'48.388"W	0.34	
12287.00	91.970	182.350	7193.45	3748.96	-3755.34	-729.78	40°03'43.191"N	104°41'48.434"W	1.05	
12381.00	91.140	181.860	7190.90	3842.83	-3849.24	-733.23	40°03'42.263"N	104°41'48.478"W	1.03	
12476.00	89.540	179.250	7190.34	3937.80	-3944.22	-734.15	40°03'41.324"N	104°41'48.490"W	3.22	
12571.00	89.420	179.040	7191.20	4032.79	-4039.21	-732.73	40°03'40.386"N	104°41'48.472"W	0.25	
12666.00	89.540	178.820	7192.06	4127.78	-4134.19	-730.96	40°03'39.447"N	104°41'48.449"W	0.26	
12761.00	91.110	179.650	7191.52	4222.78	-4229.17	-729.69	40°03'38.508"N	104°41'48.433"W	1.87	
12855.00	88.270	178.220	7192.03	4316.76	-4323.14	-727.94	40°03'37.580"N	104°41'48.410"W	3.38	
12950.00	88.340	178.290	7194.84	4411.70	-4418.06	-725.05	40°03'36.642"N	104°41'48.373"W	0.10	
13044.00	88.650	178.130	7197.31	4505.64	-4511.98	-722.11	40°03'35.714"N	104°41'48.335"W	0.37	
13139.00	88.800	178.240	7199.43	4600.59	-4606.91	-719.11	40°03'34.775"N	104°41'48.296"W	0.20	
13234.00	88.950	178.490	7201.29	4695.55	-4701.85	-716.40	40°03'33.837"N	104°41'48.261"W	0.31	
13328.00	89.230	178.650	7202.78	4789.53	-4795.81	-714.05	40°03'32.909"N	104°41'48.231"W	0.34	
13377.00	89.260	178.850	7203.43	4838.52	-4844.79	-712.98	40°03'32.425"N	104°41'48.217"W	0.41	LAST BHI MWD+IFR SURVEYS
13439.00	89.260	178.850	7204.23	4900.51	-4906.78	-711.74	40°03'31.812"N	104°41'48.201"W	0.00	PROJECTION TO BIT

HOLE & CASING SECTIONS - Ref Wellbore: GREEN 1N-8HZ AWP <13439> Ref Wellpath: GREEN 1N-8HZ AWP

String/Diameter	Start MD [ft]	End MD [ft]	Interval [ft]	Start TVD [ft]	End TVD [ft]	Start N/S [ft]	Start E/W [ft]	End N/S [ft]	End E/W [ft]
13.5in Open Hole	16.00	1572.00	1556.00	16.00	1571.95	0.00	0.00	3.17	-1.58
9.625in Casing Surface	16.00	1562.00	1546.00	16.00	1561.95	0.00	0.00	3.23	-1.55
7.875in Open Hole	1572.00	13439.00	11867.00	1571.95	7204.23	3.17	-1.58	-4906.78	-711.74

REFERENCE WELLPATH IDENTIFICATION			
Operator	KERR-MCGEE OIL & GAS ONSHORE LP (WA)	Slot	SLOT#10 GREEN 1N-8HZ (357'FNL & 868'FWL, SEC.08)
Area	COLORADO	Well	GREEN 1N-8HZ
Field	WELD COUNTY (UTM/TRUE NORTH)	Wellbore	GREEN 1N-8HZ AWB <13439>
Facility	SEC.08-T1N-R65W		

TARGETS								
Name	TVD [ft]	North [ft]	East [ft]	Grid East [US ft]	Grid North [US ft]	Latitude	Longitude	Shape
GREEN 1N-8HZ BHL ON PLAT REV-1 (1'FSL & 96'FWL, SEC.08)	7117.00	-4932.89	-705.41	1725283.33	14548276.86	40°03'31.554"N	104°41'48.120"W	point
GREEN 1N-8HZ LANDBOX	7117.00	0.00	0.00	1725971.51	14553210.20	40°04'20.302"N	104°41'39.048"W	polygon
SEC.05-T1N-R65W SECTION LINES	7137.00	725.33	2055.02	1728023.23	14553942.30	40°04'27.469"N	104°41'12.613"W	polygon
SEC.08-T1N-R65W SECTION LINES	7137.00	0.00	0.00	1725971.51	14553210.20	40°04'20.302"N	104°41'39.048"W	polygon

WELLPATH COMPOSITION - Ref Wellbore: GREEN 1N-8HZ AWB <13439>				Ref Wellpath: GREEN 1N-8HZ AWP		
Start MD [ft]	End MD [ft]	Positional Uncertainty Model	Log Name/Comment	Wellbore		
16.00	1527.00	Custom APC ISCWSA REV 2 MWD	CATHEDRAL MWD SURVEYS 13.5" <112-1527>	GREEN 1N-8HZ AWB <13439>		
1527.00	13377.00	Custom APC ISCWSA REV 2 MWD+IFR1+SC (approximation)	BHI MWD+IFR SURVEYS 7.875" <1572-13377>	GREEN 1N-8HZ AWB <13439>		
13377.00	13439.00	Blind Drilling (std)	Projection to bit	GREEN 1N-8HZ AWB <13439>		

REFERENCE WELLPATH IDENTIFICATION			
Operator	KERR-MCGEE OIL & GAS ONSHORE LP (WA)	Slot	SLOT#10 GREEN 1N-8HZ (357'FNL & 868'FWL, SEC.08)
Area	COLORADO	Well	GREEN 1N-8HZ
Field	WELD COUNTY (UTM/TRUE NORTH)	Wellbore	GREEN 1N-8HZ AWB <13439>
Facility	SEC.08-T1N-R65W		

WELLPATH COMMENTS				
MD [ft]	Inclination [°]	Azimuth [°]	TVD [ft]	Comment
112.00	0.500	65.200	112.00	BEGIN MWD SURVEYS
1527.00	0.600	175.500	1526.95	TIE-ONTO MWD SURVEYS
1572.00	0.430	213.970	1571.95	BEGIN BHI MWD+IFR SURVEYS
7269.00	35.712	196.355	6967.73	SSPG
7306.00	38.583	195.354	6997.22	NBRR
7459.00	51.803	190.004	7104.93	N470_B_CK
7582.00	63.960	182.804	7171.68	N700_C_CK
7764.00	91.817	177.768	7207.91	LANDING POINT
13377.00	89.260	178.850	7203.43	LAST BHI MWD+IFR SURVEYS
13439.00	89.260	178.850	7204.23	PROJECTION TO BIT