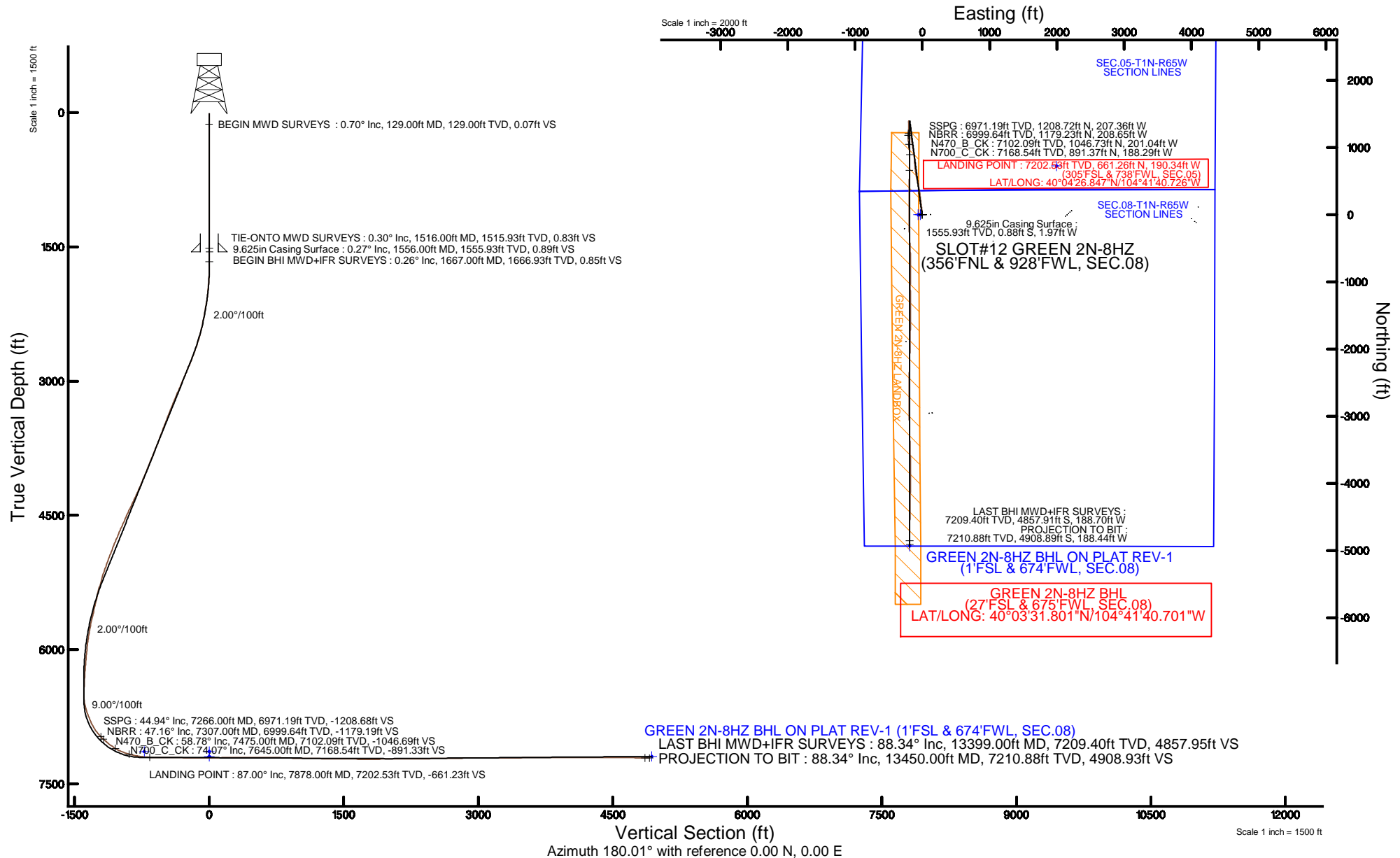


# KERR-MCGEE OIL & GAS ONSHORE LP (WA)

Location: COLORADO Slot: SLOT#12 GREEN 2N-8HZ (356'FNL & 928'FWL, SEC.08)  
Field: WELD COUNTY (UTM/TRUE NORTH) Well: GREEN 2N-8HZ  
Facility: SEC.08-T1N-R65W Wellbore: GREEN 2N-8HZ PWB

Plot reference wellpath is GREEN 2N-8HZ (REV-A.0) PWP

True vertical depths are referenced to XTREME 24 (16'KB) (RKB)	Grid System: NAD83 / UTM Zone 13 North, US feet
Measured depths are referenced to XTREME 24 (16'KB) (RKB)	North Reference: True north
XTREME 24 (16'KB) (RKB) to Mean Sea Level: 4987 feet	Scale: True distance
Mean Sea Level to Mud line (At Slot: SLOT#12 GREEN 2N-8HZ (356'FNL & 928'FWL, SEC.08)): 0 feet	Depths are in feet
Coordinates are in feet referenced to Slot	Created by: amarc on 02/Jun/2015



# Actual Wellpath Report

GREEN 2N-8HZ AWP

Page 1 of 6

## REFERENCE WELLPATH IDENTIFICATION

Operator	KERR-MCGEE OIL & GAS ONSHORE LP (WA)	Slot	SLOT#12 GREEN 2N-8HZ (356'FNL & 928'FWL, SEC.08)
Area	COLORADO	Well	GREEN 2N-8HZ
Field	WELD COUNTY (UTM/TRUE NORTH)	Wellbore	GREEN 2N-8HZ AWB <13450>
Facility	SEC.08-T1N-R65W		

## REPORT SETUP INFORMATION

Projection System	NAD83 / UTM Zone 13 North, US feet	Software System	WellArchitect® 4.0.0
North Reference	True	User	Amarcar
Scale	0.999608	Report Generated	02/Jun/2015 at 14:46
Convergence at slot	0.20° East	Database/Source file	KERR MCGEE UTM/GREEN_2N-8HZ_AWB__13450_.xml

## WELLPATH LOCATION

	Local coordinates		Grid coordinates		Geographic coordinates	
	North[ft]	East[ft]	Easting[US ft]	Northing[US ft]	Latitude	Longitude
Slot Location	386.02	-3690.37	1726031.35	14553211.42	40°04'20.312"N	104°41'38.278"W
Facility Reference Pt			1729721.63	14552838.79	40°04'16.500"N	104°40'50.808"W
Field Reference Pt			1698235.31	14552047.82	40°04'09.600"N	104°47'36.000"W

## WELLPATH DATUM

Calculation method	Minimum curvature	XTREME 24 (16'KB) (RKB) to Facility Vertical Datum	4987.00ft
Horizontal Reference Pt	Slot	XTREME 24 (16'KB) (RKB) to Mean Sea Level	4987.00ft
Vertical Reference Pt	XTREME 24 (16'KB) (RKB)	XTREME 24 (16'KB) (RKB) to Mud Line at Slot (SLOT#12 GREEN 2N-8HZ (356'FNL & 928'FWL, SEC.08))	4987.00ft
MD Reference Pt	XTREME 24 (16'KB) (RKB)	Section Origin	N 0.00, E 0.00 ft
Field Vertical Reference	Mean Sea Level	Section Azimuth	180.01°

# Actual Wellpath Report

GREEN 2N-8HZ AWP

Page 2 of 6

## REFERENCE WELLPATH IDENTIFICATION

Operator	KERR-MCGEE OIL & GAS ONSHORE LP (WA)	Slot	SLOT#12 GREEN 2N-8HZ (356'FNL & 928'FWL, SEC.08)
Area	COLORADO	Well	GREEN 2N-8HZ
Field	WELD COUNTY (UTM/TRUE NORTH)	Wellbore	GREEN 2N-8HZ AWP <13450>
Facility	SEC.08-T1N-R65W		

## WELLPATH DATA (151 stations) † = interpolated/extrapolated station

MD [ft]	Inclination [°]	Azimuth [°]	TVD [ft]	Vert Sect [ft]	North [ft]	East [ft]	Latitude	Longitude	DLS [°/100ft]	Comments
0.00†	0.000	264.400	0.00	0.00	0.00	0.00	40°04'20.312"N	104°41'38.278"W	0.00	
16.00	0.000	264.400	16.00	0.00	0.00	0.00	40°04'20.312"N	104°41'38.278"W	0.00	
129.00	0.700	264.400	129.00	0.07	-0.07	-0.69	40°04'20.311"N	104°41'38.287"W	0.62	BEGIN MWD SURVEYS
207.00	0.700	294.800	206.99	-0.09	0.09	-1.59	40°04'20.313"N	104°41'38.298"W	0.47	
287.00	1.100	291.400	286.98	-0.57	0.57	-2.75	40°04'20.318"N	104°41'38.313"W	0.50	
367.00	0.200	277.400	366.98	-0.87	0.87	-3.61	40°04'20.321"N	104°41'38.324"W	1.13	
447.00	0.400	304.300	446.97	-1.04	1.04	-3.97	40°04'20.322"N	104°41'38.329"W	0.30	
527.00	0.300	194.800	526.97	-1.00	1.00	-4.26	40°04'20.322"N	104°41'38.333"W	0.72	
607.00	0.600	73.000	606.97	-0.92	0.92	-3.91	40°04'20.321"N	104°41'38.328"W	1.00	
687.00	0.900	82.100	686.97	-1.13	1.13	-2.89	40°04'20.323"N	104°41'38.315"W	0.40	
767.00	0.500	102.400	766.96	-1.14	1.14	-1.93	40°04'20.323"N	104°41'38.303"W	0.58	
847.00	0.600	80.900	846.96	-1.13	1.13	-1.17	40°04'20.323"N	104°41'38.293"W	0.28	
927.00	0.900	92.200	926.95	-1.17	1.17	-0.13	40°04'20.324"N	104°41'38.280"W	0.42	
1007.00	0.400	169.600	1006.94	-0.87	0.87	0.55	40°04'20.321"N	104°41'38.271"W	1.13	
1087.00	0.200	153.500	1086.94	-0.47	0.47	0.66	40°04'20.317"N	104°41'38.269"W	0.27	
1167.00	0.300	214.600	1166.94	-0.18	0.18	0.60	40°04'20.314"N	104°41'38.270"W	0.34	
1247.00	0.600	238.000	1246.94	0.22	-0.22	0.13	40°04'20.310"N	104°41'38.276"W	0.43	
1327.00	0.400	278.300	1326.94	0.40	-0.40	-0.50	40°04'20.308"N	104°41'38.284"W	0.49	
1407.00	0.400	241.700	1406.94	0.49	-0.49	-1.02	40°04'20.307"N	104°41'38.291"W	0.31	
1487.00	0.500	248.500	1486.93	0.75	-0.75	-1.59	40°04'20.305"N	104°41'38.299"W	0.14	
1516.00	0.300	248.000	1515.93	0.83	-0.83	-1.78	40°04'20.304"N	104°41'38.301"W	0.69	TIE-ONTO MWD SURVEYS
1667.00	0.260	292.000	1666.93	0.85	-0.85	-2.47	40°04'20.304"N	104°41'38.310"W	0.14	BEGIN BHI MWD+IFR SURVEYS
1762.00	1.540	325.190	1761.92	-0.28	0.28	-3.40	40°04'20.315"N	104°41'38.322"W	1.40	
1857.00	2.750	0.560	1856.85	-3.61	3.61	-4.10	40°04'20.348"N	104°41'38.331"W	1.83	
1952.00	4.820	4.600	1951.64	-9.87	9.87	-3.76	40°04'20.410"N	104°41'38.326"W	2.20	
2046.00	6.870	7.520	2045.15	-19.38	19.38	-2.71	40°04'20.504"N	104°41'38.313"W	2.20	
2141.00	9.650	3.240	2139.15	-32.96	32.97	-1.51	40°04'20.638"N	104°41'38.297"W	3.00	
2236.00	10.190	350.550	2232.74	-49.21	49.21	-2.44	40°04'20.798"N	104°41'38.309"W	2.37	
2330.00	11.850	351.450	2325.01	-66.95	66.95	-5.24	40°04'20.974"N	104°41'38.345"W	1.78	
2425.00	13.820	350.890	2417.63	-87.80	87.80	-8.49	40°04'21.180"N	104°41'38.387"W	2.08	
2520.00	15.720	350.880	2509.49	-111.71	111.72	-12.33	40°04'21.416"N	104°41'38.437"W	2.00	
2615.00	18.750	352.460	2600.21	-139.56	139.57	-16.37	40°04'21.691"N	104°41'38.489"W	3.23	
2709.00	19.970	355.050	2688.89	-170.53	170.54	-19.74	40°04'21.997"N	104°41'38.532"W	1.59	
2804.00	22.250	352.630	2777.52	-204.54	204.54	-23.45	40°04'22.333"N	104°41'38.580"W	2.57	
2899.00	22.630	352.760	2865.32	-240.51	240.51	-28.06	40°04'22.689"N	104°41'38.639"W	0.40	
2994.00	23.350	353.110	2952.78	-277.33	277.33	-32.62	40°04'23.053"N	104°41'38.698"W	0.77	
3089.00	23.780	352.670	3039.85	-315.01	315.02	-37.32	40°04'23.425"N	104°41'38.758"W	0.49	
3183.00	22.570	352.230	3126.27	-351.68	351.69	-42.18	40°04'23.787"N	104°41'38.821"W	1.30	
3278.00	22.790	347.730	3213.93	-387.73	387.74	-48.55	40°04'24.144"N	104°41'38.903"W	1.84	
3373.00	22.610	348.730	3301.57	-423.62	423.63	-56.03	40°04'24.498"N	104°41'38.999"W	0.45	
3468.00	21.590	347.230	3389.59	-458.57	458.58	-63.46	40°04'24.844"N	104°41'39.094"W	1.23	
3563.00	21.190	349.560	3478.05	-492.50	492.51	-70.44	40°04'25.179"N	104°41'39.184"W	0.99	
3658.00	20.990	345.890	3566.69	-525.89	525.90	-77.70	40°04'25.509"N	104°41'39.277"W	1.41	
3753.00	22.020	347.440	3655.07	-559.77	559.79	-85.72	40°04'25.844"N	104°41'39.381"W	1.24	
3848.00	21.700	351.840	3743.25	-594.54	594.56	-92.09	40°04'26.188"N	104°41'39.463"W	1.76	

REFERENCE WELLPATH IDENTIFICATION			
Operator	KERR-MCGEE OIL & GAS ONSHORE LP (WA)	Slot	SLOT#12 GREEN 2N-8HZ (356'FNL & 928'FWL, SEC.08)
Area	COLORADO	Well	GREEN 2N-8HZ
Field	WELD COUNTY (UTM/TRUE NORTH)	Wellbore	GREEN 2N-8HZ AWB <13450>
Facility	SEC.08-T1N-R65W		

WELLPATH DATA (151 stations) † = interpolated/extrapolated station										
MD [ft]	Inclination [°]	Azimuth [°]	TVD [ft]	Vert Sect [ft]	North [ft]	East [ft]	Latitude	Longitude	DLS [°/100ft]	Comments
3942.00	22.730	351.390	3830.27	-629.70	629.72	-97.27	40°04'26.535"N	104°41'39.529"W	1.11	
4037.00	21.880	351.400	3918.16	-665.35	665.37	-102.67	40°04'26.887"N	104°41'39.599"W	0.89	
4132.00	21.820	352.060	4006.34	-700.33	700.36	-107.75	40°04'27.233"N	104°41'39.664"W	0.27	
4227.00	22.880	356.200	4094.20	-736.25	736.27	-111.42	40°04'27.588"N	104°41'39.711"W	2.00	
4321.00	22.730	359.140	4180.86	-772.64	772.67	-112.90	40°04'27.948"N	104°41'39.730"W	1.22	
4417.00	24.520	356.210	4268.81	-811.07	811.09	-114.49	40°04'28.327"N	104°41'39.751"W	2.23	
4511.00	25.860	352.720	4353.88	-850.87	850.89	-118.38	40°04'28.721"N	104°41'39.801"W	2.13	
4606.00	25.920	352.510	4439.34	-892.01	892.03	-123.71	40°04'29.127"N	104°41'39.869"W	0.12	
4701.00	23.630	351.120	4525.59	-931.41	931.43	-129.36	40°04'29.517"N	104°41'39.942"W	2.49	
4796.00	24.650	351.120	4612.28	-969.79	969.82	-135.36	40°04'29.896"N	104°41'40.019"W	1.07	
4891.00	23.300	349.350	4699.09	-1007.83	1007.86	-141.89	40°04'30.272"N	104°41'40.103"W	1.61	
4986.00	22.530	352.500	4786.59	-1044.34	1044.37	-147.74	40°04'30.633"N	104°41'40.178"W	1.52	
5081.00	21.640	351.480	4874.62	-1079.71	1079.74	-152.71	40°04'30.982"N	104°41'40.242"W	1.02	
5176.00	20.860	350.540	4963.16	-1113.72	1113.75	-158.08	40°04'31.318"N	104°41'40.312"W	0.90	
5271.00	20.180	356.020	5052.14	-1146.75	1146.78	-162.00	40°04'31.645"N	104°41'40.362"W	2.14	
5365.00	17.840	358.960	5141.01	-1177.33	1177.36	-163.39	40°04'31.947"N	104°41'40.380"W	2.69	
5460.00	15.930	359.690	5231.91	-1204.92	1204.95	-163.72	40°04'32.220"N	104°41'40.384"W	2.02	
5555.00	15.110	353.110	5323.45	-1230.25	1230.28	-165.28	40°04'32.470"N	104°41'40.404"W	2.04	
5650.00	13.060	352.080	5415.59	-1253.17	1253.21	-168.24	40°04'32.696"N	104°41'40.442"W	2.17	
5744.00	12.990	346.440	5507.18	-1273.96	1274.00	-172.18	40°04'32.902"N	104°41'40.493"W	1.35	
5839.00	13.330	348.790	5599.68	-1295.08	1295.12	-176.82	40°04'33.111"N	104°41'40.553"W	0.67	
5934.00	11.910	353.390	5692.39	-1315.56	1315.60	-180.07	40°04'33.313"N	104°41'40.594"W	1.83	
6028.00	11.350	342.780	5784.47	-1334.04	1334.07	-183.93	40°04'33.496"N	104°41'40.644"W	2.35	
6122.00	8.260	332.140	5877.09	-1348.84	1348.88	-189.82	40°04'33.642"N	104°41'40.720"W	3.80	
6217.00	7.160	338.470	5971.23	-1360.38	1360.42	-195.19	40°04'33.756"N	104°41'40.789"W	1.46	
6312.00	6.040	339.930	6065.60	-1370.59	1370.63	-199.07	40°04'33.857"N	104°41'40.839"W	1.19	
6407.00	4.540	355.670	6160.20	-1379.03	1379.07	-201.07	40°04'33.940"N	104°41'40.865"W	2.18	
6501.00	4.340	348.120	6253.92	-1386.22	1386.26	-202.09	40°04'34.011"N	104°41'40.878"W	0.66	
6595.00	2.480	11.010	6347.75	-1391.70	1391.74	-202.43	40°04'34.065"N	104°41'40.882"W	2.41	
6690.00	2.140	10.170	6442.67	-1395.46	1395.50	-201.72	40°04'34.103"N	104°41'40.873"W	0.36	
6785.00	2.040	177.550	6537.65	-1395.52	1395.56	-201.34	40°04'34.103"N	104°41'40.868"W	4.37	
6879.00	13.670	185.920	6630.61	-1382.75	1382.79	-202.42	40°04'33.977"N	104°41'40.882"W	12.40	
6975.00	20.310	177.370	6722.38	-1354.79	1354.83	-202.82	40°04'33.701"N	104°41'40.887"W	7.37	
7069.00	25.080	178.420	6809.08	-1318.56	1318.60	-201.52	40°04'33.343"N	104°41'40.870"W	5.09	
7164.00	32.780	183.840	6892.18	-1272.70	1272.74	-202.69	40°04'32.889"N	104°41'40.885"W	8.55	
7259.00	44.570	184.430	6966.21	-1213.59	1213.63	-207.01	40°04'32.305"N	104°41'40.941"W	12.42	
7266.00†	44.942	183.929	6971.19	-1208.68	1208.72	-207.36	40°04'32.257"N	104°41'40.946"W	7.33	SSPG
7307.00†	47.163	181.119	6999.64	-1179.19	1179.23	-208.65	40°04'31.965"N	104°41'40.962"W	7.33	NBRF
7353.00	49.730	178.200	7030.15	-1144.78	1144.82	-208.43	40°04'31.625"N	104°41'40.959"W	7.33	
7448.00	55.940	174.260	7087.53	-1069.31	1069.35	-203.35	40°04'30.880"N	104°41'40.894"W	7.32	
7475.00†	58.785	174.080	7102.09	-1046.69	1046.73	-201.04	40°04'30.656"N	104°41'40.864"W	10.55	N470_B_CK
7543.00	65.950	173.670	7133.61	-986.83	986.87	-194.61	40°04'30.064"N	104°41'40.781"W	10.55	
7638.00	73.430	178.320	7166.58	-898.05	898.08	-188.48	40°04'29.187"N	104°41'40.703"W	9.11	
7645.00†	74.074	178.516	7168.54	-891.33	891.37	-188.29	40°04'29.121"N	104°41'40.700"W	9.58	N700_C_CK
7733.00	82.180	180.890	7186.63	-805.29	805.33	-187.87	40°04'28.270"N	104°41'40.695"W	9.58	

# Actual Wellpath Report

GREEN 2N-8HZ AWP

Page 4 of 6

REFERENCE WELLPATH IDENTIFICATION			
Operator	KERR-MCGEE OIL & GAS ONSHORE LP (WA)	Slot	SLOT#12 GREEN 2N-8HZ (356'FNL & 928'FWL, SEC.08)
Area	COLORADO	Well	GREEN 2N-8HZ
Field	WELD COUNTY (UTM/TRUE NORTH)	Wellbore	GREEN 2N-8HZ AWB <13450>
Facility	SEC.08-T1N-R65W		

WELLPATH DATA (151 stations) † = interpolated/extrapolated station										
MD [ft]	Inclination [°]	Azimuth [°]	TVD [ft]	Vert Sect [ft]	North [ft]	East [ft]	Latitude	Longitude	DLS [°/100ft]	Comments
7827.00	83.530	181.030	7198.32	-712.04	712.07	-189.44	40°04'27.349"N	104°41'40.715"W	1.44	
7878.00†	87.003	181.014	7202.53	-661.23	661.26	-190.34	40°04'26.847"N	104°41'40.726"W	6.81	LANDING POINT
7922.00	90.000	181.000	7203.68	-617.25	617.29	-191.12	40°04'26.412"N	104°41'40.736"W	6.81	
8017.00	90.370	180.670	7203.37	-522.26	522.30	-192.50	40°04'25.473"N	104°41'40.754"W	0.52	
8112.00	88.580	181.100	7204.24	-427.28	427.32	-193.97	40°04'24.535"N	104°41'40.773"W	1.94	
8207.00	89.110	180.430	7206.16	-332.31	332.35	-195.24	40°04'23.596"N	104°41'40.789"W	0.90	
8302.00	88.590	180.330	7208.06	-237.33	237.37	-195.87	40°04'22.658"N	104°41'40.797"W	0.56	
8397.00	88.250	180.740	7210.68	-142.37	142.41	-196.75	40°04'21.719"N	104°41'40.809"W	0.56	
8492.00	90.710	179.820	7211.54	-47.39	47.42	-197.22	40°04'20.781"N	104°41'40.815"W	2.76	
8587.00	91.540	179.350	7209.68	47.59	-47.55	-196.53	40°04'19.842"N	104°41'40.806"W	1.00	
8682.00	92.220	179.030	7206.56	142.53	-142.49	-195.19	40°04'18.904"N	104°41'40.789"W	0.79	
8776.00	90.650	178.340	7204.21	236.47	-236.43	-193.03	40°04'17.976"N	104°41'40.761"W	1.82	
8871.00	89.420	177.760	7204.15	331.41	-331.38	-189.80	40°04'17.037"N	104°41'40.719"W	1.43	
8966.00	90.280	176.810	7204.40	426.30	-426.27	-185.30	40°04'16.100"N	104°41'40.661"W	1.35	
9061.00	91.230	177.490	7203.15	521.18	-521.14	-180.57	40°04'15.162"N	104°41'40.601"W	1.23	
9156.00	90.030	178.410	7202.10	616.11	-616.07	-177.18	40°04'14.224"N	104°41'40.557"W	1.59	
9251.00	88.280	180.000	7203.50	711.08	-711.05	-175.86	40°04'13.285"N	104°41'40.540"W	2.49	
9346.00	87.660	180.970	7206.87	806.02	-805.98	-176.66	40°04'12.347"N	104°41'40.550"W	1.21	
9440.00	87.380	180.590	7210.94	899.92	-899.88	-177.94	40°04'11.419"N	104°41'40.567"W	0.50	
9535.00	89.290	180.410	7213.70	994.87	-994.84	-178.77	40°04'10.481"N	104°41'40.577"W	2.02	
9630.00	89.350	179.950	7214.82	1089.86	-1089.83	-179.07	40°04'09.542"N	104°41'40.581"W	0.49	
9724.00	89.260	179.750	7215.97	1183.86	-1183.82	-178.82	40°04'08.613"N	104°41'40.578"W	0.23	
9819.00	89.320	178.700	7217.14	1278.84	-1278.80	-177.54	40°04'07.675"N	104°41'40.562"W	1.11	
9913.00	89.080	179.680	7218.45	1372.82	-1372.78	-176.21	40°04'06.746"N	104°41'40.544"W	1.07	
10008.00	89.690	181.120	7219.47	1467.81	-1467.77	-176.87	40°04'05.807"N	104°41'40.553"W	1.65	
10103.00	89.320	180.610	7220.30	1562.79	-1562.76	-178.30	40°04'04.869"N	104°41'40.571"W	0.66	
10198.00	88.680	180.030	7221.95	1657.78	-1657.74	-178.84	40°04'03.930"N	104°41'40.578"W	0.91	
10292.00	89.570	180.280	7223.39	1751.76	-1751.73	-179.09	40°04'03.001"N	104°41'40.581"W	0.98	
10387.00	90.950	180.990	7222.96	1846.75	-1846.72	-180.14	40°04'02.062"N	104°41'40.595"W	1.63	
10482.00	91.390	181.380	7221.02	1941.71	-1941.68	-182.11	40°04'01.124"N	104°41'40.620"W	0.62	
10576.00	90.400	181.680	7219.55	2035.67	-2035.63	-184.62	40°04'00.195"N	104°41'40.653"W	1.10	
10671.00	89.720	181.440	7219.45	2130.63	-2130.60	-187.20	40°03'59.257"N	104°41'40.686"W	0.76	
10766.00	89.350	181.440	7220.22	2225.60	-2225.56	-189.59	40°03'58.319"N	104°41'40.717"W	0.39	
10861.00	91.120	181.430	7219.83	2320.57	-2320.53	-191.97	40°03'57.380"N	104°41'40.747"W	1.86	
10956.00	91.290	180.070	7217.83	2415.54	-2415.50	-193.21	40°03'56.442"N	104°41'40.763"W	1.44	
11051.00	91.050	180.200	7215.89	2510.52	-2510.48	-193.44	40°03'55.503"N	104°41'40.766"W	0.29	
11146.00	90.490	180.470	7214.62	2605.50	-2605.47	-193.99	40°03'54.564"N	104°41'40.773"W	0.65	
11240.00	90.650	180.950	7213.68	2699.49	-2699.45	-195.16	40°03'53.635"N	104°41'40.788"W	0.54	
11335.00	91.020	179.830	7212.30	2794.48	-2794.44	-195.80	40°03'52.697"N	104°41'40.796"W	1.24	
11430.00	90.370	179.430	7211.15	2889.47	-2889.43	-195.19	40°03'51.758"N	104°41'40.788"W	0.80	
11525.00	89.910	179.130	7210.91	2984.46	-2984.42	-193.99	40°03'50.819"N	104°41'40.773"W	0.58	
11620.00	90.800	178.160	7210.32	3079.43	-3079.39	-191.75	40°03'49.881"N	104°41'40.744"W	1.39	
11714.00	90.990	180.020	7208.86	3173.40	-3173.36	-190.26	40°03'48.952"N	104°41'40.725"W	1.99	
11904.00	90.060	177.320	7207.11	3363.32	-3363.29	-185.85	40°03'47.075"N	104°41'40.668"W	1.50	
11999.00	90.250	178.450	7206.86	3458.26	-3458.22	-182.34	40°03'46.137"N	104°41'40.623"W	1.21	

REFERENCE WELLPATH IDENTIFICATION			
Operator	KERR-MCGEE OIL & GAS ONSHORE LP (WA)	Slot	SLOT#12 GREEN 2N-8HZ (356'FNL & 928'FWL, SEC.08)
Area	COLORADO	Well	GREEN 2N-8HZ
Field	WELD COUNTY (UTM/TRUE NORTH)	Wellbore	GREEN 2N-8HZ AWP <13450>
Facility	SEC.08-T1N-R65W		

WELLPATH DATA (151 stations)										
MD [ft]	Inclination [°]	Azimuth [°]	TVD [ft]	Vert Sect [ft]	North [ft]	East [ft]	Latitude	Longitude	DLS [°/100ft]	Comments
12093.00	90.620	178.440	7206.14	3552.22	-3552.18	-179.79	40°03'45.209"N	104°41'40.590"W	0.39	
12188.00	91.050	179.670	7204.76	3647.19	-3647.16	-178.22	40°03'44.270"N	104°41'40.570"W	1.37	
12282.00	90.220	178.650	7203.72	3741.17	-3741.14	-176.84	40°03'43.341"N	104°41'40.552"W	1.40	
12377.00	90.620	178.770	7203.02	3836.15	-3836.11	-174.71	40°03'42.403"N	104°41'40.525"W	0.44	
12472.00	89.020	180.950	7203.32	3931.14	-3931.10	-174.47	40°03'41.464"N	104°41'40.522"W	2.85	
12567.00	89.230	181.450	7204.77	4026.10	-4026.07	-176.46	40°03'40.526"N	104°41'40.547"W	0.57	
12662.00	89.480	181.120	7205.84	4121.08	-4121.04	-178.59	40°03'39.587"N	104°41'40.575"W	0.44	
12757.00	90.740	181.640	7205.66	4216.05	-4216.01	-180.88	40°03'38.649"N	104°41'40.604"W	1.43	
12851.00	89.850	180.610	7205.17	4310.02	-4309.99	-182.73	40°03'37.720"N	104°41'40.628"W	1.45	
12946.00	89.970	180.610	7205.32	4405.02	-4404.98	-183.74	40°03'36.781"N	104°41'40.641"W	0.13	
13040.00	89.570	180.830	7205.70	4499.01	-4498.97	-184.92	40°03'35.852"N	104°41'40.656"W	0.49	
13135.00	89.850	181.110	7206.18	4594.00	-4593.96	-186.53	40°03'34.914"N	104°41'40.677"W	0.42	
13230.00	89.880	180.660	7206.40	4688.98	-4688.95	-188.00	40°03'33.975"N	104°41'40.696"W	0.47	
13324.00	88.770	180.240	7207.51	4782.97	-4782.94	-188.73	40°03'33.046"N	104°41'40.705"W	1.26	
13399.00	88.340	179.710	7209.40	4857.95	-4857.91	-188.70	40°03'32.305"N	104°41'40.705"W	0.91	LAST BHI MWD+IFR SURVEYS
13450.00	88.340	179.710	7210.88	4908.93	-4908.89	-188.44	40°03'31.801"N	104°41'40.701"W	0.00	PROJECTION TO BIT

HOLE & CASING SECTIONS - Ref Wellbore: GREEN 2N-8HZ AWP <13450> Ref Wellpath: GREEN 2N-8HZ AWP									
String/Diameter	Start MD [ft]	End MD [ft]	Interval [ft]	Start TVD [ft]	End TVD [ft]	Start N/S [ft]	Start E/W [ft]	End N/S [ft]	End E/W [ft]
13.5in Open Hole	16.00	1566.00	1550.00	16.00	1565.93	0.00	0.00	-0.89	-2.02
9.625in Casing Surface	16.00	1556.00	1540.00	16.00	1555.93	0.00	0.00	-0.88	-1.97
7.875in Open Hole	1566.00	13450.00	11884.00	1565.93	7210.88	-0.89	-2.02	-4908.89	-188.44

TARGETS								
Name	TVD [ft]	North [ft]	East [ft]	Grid East [US ft]	Grid North [US ft]	Latitude	Longitude	Shape
SEC.05-T1N-R65W SECTION LINES	7137.00	724.32	1995.17	1728023.23	14553942.30	40°04'27.469"N	104°41'12.613"W	polygon
SEC.08-T1N-R65W SECTION LINES	7137.00	-1.01	-59.86	1725971.51	14553210.20	40°04'20.302"N	104°41'39.048"W	polygon
GREEN 2N-8HZ BHL ON PLAT REV-1 (1'FSL & 674'FWL, SEC.08)	7192.00	-4934.62	-186.93	1725861.45	14548278.13	40°03'31.547"N	104°41'40.682"W	point
GREEN 2N-8HZ LANDBOX	7192.00	-0.30	-29.93	1726001.43	14553211.02	40°04'20.309"N	104°41'38.663"W	polygon

WELLPATH COMPOSITION - Ref Wellbore: GREEN 2N-8HZ AWP <13450> Ref Wellpath: GREEN 2N-8HZ AWP									
Start MD [ft]	End MD [ft]	Positional Uncertainty Model			Log Name/Comment		Wellbore		
16.00	1516.00	Custom APC ISCWSA REV 2 MWD			CATHEDRAL MWD SURVEYS 13.5" <129-1516>		GREEN 2N-8HZ AWP <13450>		
1516.00	13399.00	Custom APC ISCWSA REV 2 MWD+IFR1+SC (approximation)			BHI MWD+IFR SURVEYS 7.875" <1667-13399>		GREEN 2N-8HZ AWP <13450>		
13399.00	13450.00	Blind Drilling (std)			Projection to bit		GREEN 2N-8HZ AWP <13450>		

REFERENCE WELLPATH IDENTIFICATION			
Operator	KERR-MCGEE OIL & GAS ONSHORE LP (WA)	Slot	SLOT#12 GREEN 2N-8HZ (356'FNL & 928'FWL, SEC.08)
Area	COLORADO	Well	GREEN 2N-8HZ
Field	WELD COUNTY (UTM/TRUE NORTH)	Wellbore	GREEN 2N-8HZ AWB <13450>
Facility	SEC.08-T1N-R65W		

WELLPATH COMMENTS				
MD [ft]	Inclination [°]	Azimuth [°]	TVD [ft]	Comment
129.00	0.700	264.400	129.00	BEGIN MWD SURVEYS
1516.00	0.300	248.000	1515.93	TIE-ONTO MWD SURVEYS
1667.00	0.260	292.000	1666.93	BEGIN BHI MWD+IFR SURVEYS
7266.00	44.942	183.929	6971.19	SSPG
7307.00	47.163	181.119	6999.64	NBRR
7475.00	58.785	174.080	7102.09	N470_B_CK
7645.00	74.074	178.516	7168.54	N700_C_CK
7878.00	87.003	181.014	7202.53	LANDING POINT
13399.00	88.340	179.710	7209.40	LAST BHI MWD+IFR SURVEYS
13450.00	88.340	179.710	7210.88	PROJECTION TO BIT