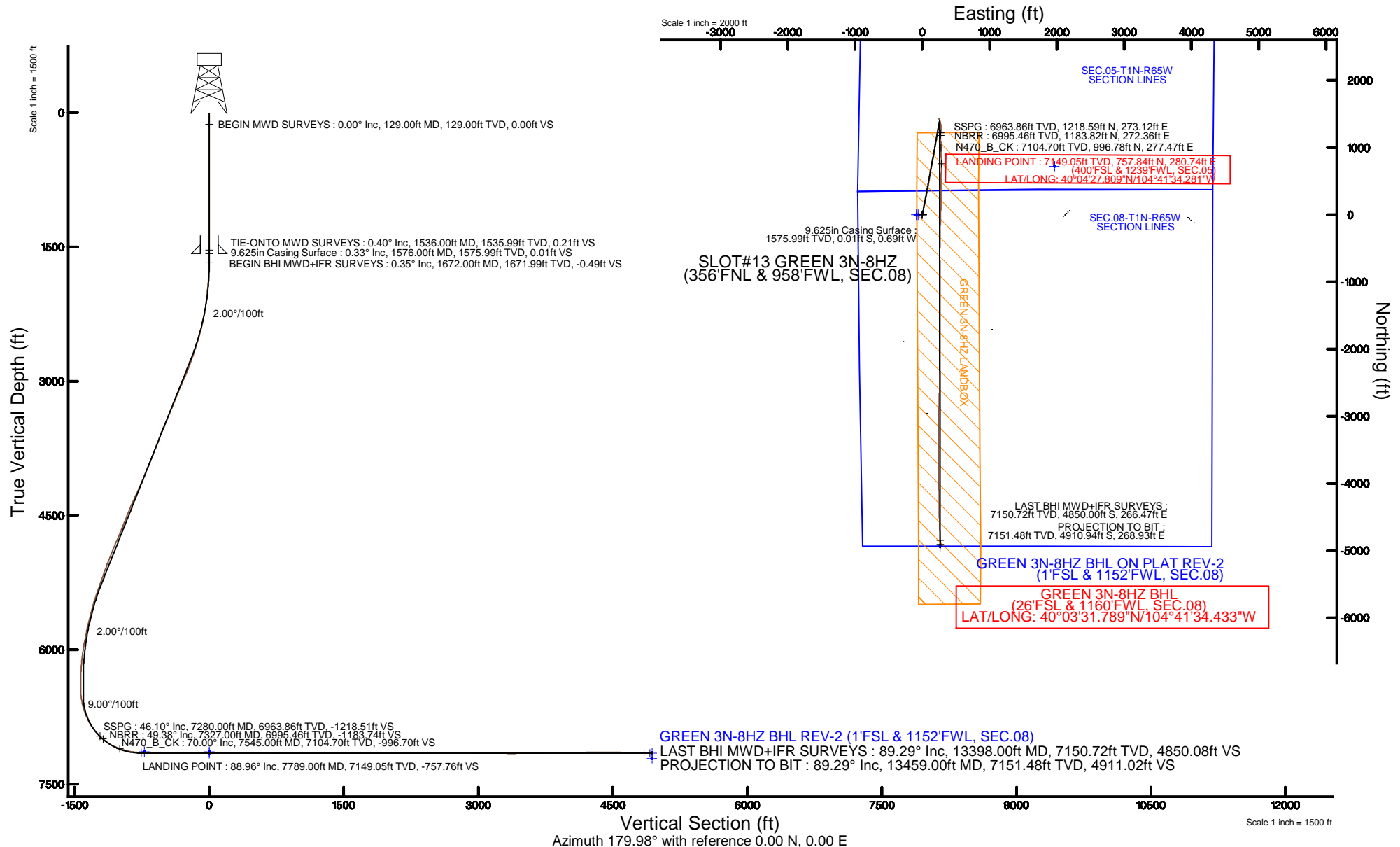


KERR-MCGEE OIL & GAS ONSHORE LP (WA)

Location: COLORADO Slot: SLOT#13 GREEN 3N-8HZ (356'FNL & 958'FWL, SEC.08)
 Field: WELD COUNTY (UTM/TRUE NORTH) Well: GREEN 3N-8HZ
 Facility: SEC.08-T1N-R65W Wellbore: GREEN 3N-8HZ PWB

Plot reference wellpath is GREEN 3N-8HZ (REV-B.0) PWP

True vertical depths are referenced to XTREME 24 (16'KB) (RKB)	Grid System: NAD83 / UTM Zone 13 North, US feet
Measured depths are referenced to XTREME 24 (16'KB) (RKB)	North Reference: True north
XTREME 24 (16'KB) (RKB) to Mean Sea Level: 4987 feet	Scale: True distance
Mean Sea Level to Mud line (At Slot: SLOT#13 GREEN 3N-8HZ (356'FNL & 958'FWL, SEC.08)): 0 feet	Depths are in feet
Coordinates are in feet referenced to Slot	Created by: amarc on 02/Jun/2015



REFERENCE WELLPATH IDENTIFICATION			
Operator	KERR-MCGEE OIL & GAS ONSHORE LP (WA)	Slot	SLOT#13 GREEN 3N-8HZ (356'FNL & 958'FWL, SEC.08)
Area	COLORADO	Well	GREEN 3N-8HZ
Field	WELD COUNTY (UTM/TRUE NORTH)	Wellbore	GREEN 3N-8HZ AWB <13459>
Facility	SEC.08-T1N-R65W		

REPORT SETUP INFORMATION			
Projection System	NAD83 / UTM Zone 13 North, US feet	Software System	WellArchitect® 4.0.0
North Reference	True	User	Amarcar
Scale	0.999608	Report Generated	02/Jun/2015 at 12:52
Convergence at slot	0.20° East	Database/Source file	KERR MCGEE UTM/GREEN_3N-8HZ_AWB_13459_.xml

WELLPATH LOCATION						
	Local coordinates		Grid coordinates		Geographic coordinates	
	North[ft]	East[ft]	Easting[US ft]	Northing[US ft]	Latitude	Longitude
Slot Location	386.82	-3660.36	1726061.34	14553212.33	40°04'20.320"N	104°41'37.892"W
Facility Reference Pt			1729721.63	14552838.79	40°04'16.500"N	104°40'50.808"W
Field Reference Pt			1698235.31	14552047.82	40°04'09.600"N	104°47'36.000"W

WELLPATH DATUM			
Calculation method	Minimum curvature	XTREME 24 (16'KB) (RKB) to Facility Vertical Datum	4987.00ft
Horizontal Reference Pt	Slot	XTREME 24 (16'KB) (RKB) to Mean Sea Level	4987.00ft
Vertical Reference Pt	XTREME 24 (16'KB) (RKB)	XTREME 24 (16'KB) (RKB) to Mud Line at Slot (SLOT#13 GREEN 3N-8HZ (356'FNL & 958'FWL, SEC.08))	4987.00ft
MD Reference Pt	XTREME 24 (16'KB) (RKB)	Section Origin	N 0.00, E 0.00 ft
Field Vertical Reference	Mean Sea Level	Section Azimuth	179.98°

REFERENCE WELLPATH IDENTIFICATION

Operator	KERR-MCGEE OIL & GAS ONSHORE LP (WA)	Slot	SLOT#13 GREEN 3N-8HZ (356'FNL & 958'FWL, SEC.08)
Area	COLORADO	Well	GREEN 3N-8HZ
Field	WELD COUNTY (UTM/TRUE NORTH)	Wellbore	GREEN 3N-8HZ AWP <13459>
Facility	SEC.08-T1N-R65W		

WELLPATH DATA (146 stations) † = interpolated/extrapolated station

MD [ft]	Inclination [°]	Azimuth [°]	TVD [ft]	Vert Sect [ft]	North [ft]	East [ft]	Latitude	Longitude	DLS [°/100ft]	Comments
0.00†	0.000	183.000	0.00	0.00	0.00	0.00	40°04'20.320"N	104°41'37.892"W	0.00	
16.00	0.000	183.000	16.00	0.00	0.00	0.00	40°04'20.320"N	104°41'37.892"W	0.00	
129.00	0.000	0.000	129.00	0.00	0.00	0.00	40°04'20.320"N	104°41'37.892"W	0.00	BEGIN MWD SURVEYS
207.00	0.200	183.000	207.00	0.14	-0.14	-0.01	40°04'20.319"N	104°41'37.892"W	0.26	
287.00	0.100	243.800	287.00	0.31	-0.31	-0.08	40°04'20.317"N	104°41'37.893"W	0.22	
367.00	0.100	162.000	367.00	0.40	-0.40	-0.12	40°04'20.316"N	104°41'37.894"W	0.16	
447.00	0.200	269.200	447.00	0.47	-0.47	-0.24	40°04'20.315"N	104°41'37.895"W	0.31	
527.00	0.400	232.600	527.00	0.64	-0.64	-0.60	40°04'20.314"N	104°41'37.900"W	0.33	
607.00	0.200	166.100	607.00	0.95	-0.95	-0.79	40°04'20.311"N	104°41'37.902"W	0.46	
687.00	0.100	131.000	687.00	1.13	-1.13	-0.70	40°04'20.309"N	104°41'37.901"W	0.16	
767.00	0.100	74.400	767.00	1.16	-1.16	-0.58	40°04'20.309"N	104°41'37.899"W	0.12	
847.00	0.300	150.700	847.00	1.32	-1.32	-0.41	40°04'20.307"N	104°41'37.897"W	0.37	
927.00	0.100	255.800	927.00	1.52	-1.52	-0.38	40°04'20.305"N	104°41'37.897"W	0.43	
1007.00	0.100	116.400	1007.00	1.57	-1.57	-0.38	40°04'20.304"N	104°41'37.897"W	0.23	
1087.00	0.300	324.800	1087.00	1.43	-1.43	-0.44	40°04'20.306"N	104°41'37.898"W	0.49	
1167.00	0.100	303.200	1167.00	1.22	-1.22	-0.62	40°04'20.308"N	104°41'37.900"W	0.26	
1247.00	0.300	308.300	1246.99	1.05	-1.05	-0.84	40°04'20.310"N	104°41'37.903"W	0.25	
1327.00	0.400	288.800	1326.99	0.83	-0.83	-1.27	40°04'20.312"N	104°41'37.908"W	0.19	
1407.00	0.100	65.800	1406.99	0.71	-0.71	-1.47	40°04'20.313"N	104°41'37.911"W	0.60	
1487.00	0.500	50.400	1486.99	0.46	-0.46	-1.14	40°04'20.315"N	104°41'37.907"W	0.51	
1536.00	0.400	46.200	1535.99	0.21	-0.21	-0.85	40°04'20.318"N	104°41'37.903"W	0.21	TIE-ONTO MWD SURVEYS
1672.00	0.350	333.370	1671.99	-0.49	0.49	-0.69	40°04'20.325"N	104°41'37.901"W	0.33	BEGIN BHI MWD+IFR SURVEYS
1766.00	2.360	25.300	1765.96	-2.50	2.50	0.01	40°04'20.345"N	104°41'37.892"W	2.30	
1861.00	4.780	28.470	1860.77	-7.75	7.75	2.73	40°04'20.397"N	104°41'37.857"W	2.55	
1956.00	5.750	27.840	1955.36	-15.43	15.44	6.84	40°04'20.473"N	104°41'37.804"W	1.02	
2051.00	6.930	17.510	2049.79	-25.11	25.11	10.79	40°04'20.568"N	104°41'37.753"W	1.72	
2146.00	7.810	4.030	2144.01	-37.01	37.02	12.96	40°04'20.686"N	104°41'37.725"W	2.04	
2241.00	10.090	4.150	2237.84	-51.75	51.76	14.02	40°04'20.831"N	104°41'37.712"W	2.40	
2335.00	12.710	4.990	2329.98	-70.27	70.27	15.52	40°04'21.014"N	104°41'37.692"W	2.79	
2430.00	15.070	5.670	2422.20	-92.97	92.98	17.64	40°04'21.239"N	104°41'37.665"W	2.49	
2524.00	15.800	10.880	2512.81	-117.70	117.71	21.27	40°04'21.483"N	104°41'37.618"W	1.67	
2619.00	17.840	13.950	2603.74	-144.53	144.53	27.22	40°04'21.748"N	104°41'37.542"W	2.34	
2714.00	18.840	13.810	2693.92	-173.54	173.55	34.39	40°04'22.035"N	104°41'37.450"W	1.05	
2809.00	20.800	14.350	2783.28	-204.78	204.79	42.23	40°04'22.344"N	104°41'37.349"W	2.07	
2904.00	22.290	11.130	2871.65	-238.80	238.82	49.89	40°04'22.680"N	104°41'37.250"W	2.00	
2998.00	23.520	9.700	2958.23	-274.78	274.80	56.49	40°04'23.036"N	104°41'37.165"W	1.44	
3093.00	24.300	10.900	3045.08	-312.66	312.68	63.38	40°04'23.410"N	104°41'37.077"W	0.97	
3188.00	23.070	9.730	3132.08	-350.20	350.22	70.22	40°04'23.781"N	104°41'36.989"W	1.39	
3283.00	22.240	11.900	3219.75	-386.13	386.16	77.08	40°04'24.136"N	104°41'36.901"W	1.24	
3378.00	22.950	12.440	3307.46	-421.81	421.84	84.77	40°04'24.489"N	104°41'36.802"W	0.78	
3472.00	23.470	10.140	3393.85	-458.13	458.16	92.02	40°04'24.848"N	104°41'36.708"W	1.11	
3567.00	23.040	8.500	3481.13	-495.14	495.17	98.10	40°04'25.213"N	104°41'36.630"W	0.82	
3662.00	22.130	7.960	3568.85	-531.24	531.28	103.32	40°04'25.570"N	104°41'36.563"W	0.98	
3757.00	20.980	8.320	3657.20	-565.79	565.83	108.26	40°04'25.912"N	104°41'36.499"W	1.22	
3852.00	21.230	9.720	3745.83	-599.57	599.61	113.63	40°04'26.245"N	104°41'36.430"W	0.59	

REFERENCE WELLPATH IDENTIFICATION

Operator	KERR-MCGEE OIL & GAS ONSHORE LP (WA)	Slot	SLOT#13 GREEN 3N-8HZ (356'FNL & 958'FWL, SEC.08)
Area	COLORADO	Well	GREEN 3N-8HZ
Field	WELD COUNTY (UTM/TRUE NORTH)	Wellbore	GREEN 3N-8HZ AWP <13459>
Facility	SEC.08-T1N-R65W		

WELLPATH DATA (146 stations) † = interpolated/extrapolated station

MD [ft]	Inclination [°]	Azimuth [°]	TVD [ft]	Vert Sect [ft]	North [ft]	East [ft]	Latitude	Longitude	DLS [°/100ft]	Comments
3947.00	21.420	9.950	3834.33	-633.61	633.65	119.53	40°04'26.582"N	104°41'36.354"W	0.22	
4042.00	21.850	8.970	3922.63	-668.16	668.20	125.28	40°04'26.923"N	104°41'36.280"W	0.59	
4136.00	23.270	10.010	4009.44	-703.72	703.76	131.24	40°04'27.275"N	104°41'36.204"W	1.57	
4231.00	22.670	11.970	4096.91	-740.11	740.15	138.30	40°04'27.634"N	104°41'36.113"W	1.02	
4326.00	24.150	10.370	4184.09	-777.14	777.18	145.59	40°04'28.000"N	104°41'36.019"W	1.70	
4421.00	25.270	10.850	4270.39	-816.17	816.21	152.91	40°04'28.386"N	104°41'35.925"W	1.20	
4516.00	24.460	10.580	4356.58	-855.41	855.46	160.33	40°04'28.774"N	104°41'35.830"W	0.86	
4611.00	22.820	9.180	4443.60	-892.93	892.98	166.89	40°04'29.145"N	104°41'35.745"W	1.82	
4706.00	21.040	11.030	4531.73	-927.86	927.91	173.09	40°04'29.490"N	104°41'35.665"W	2.01	
4801.00	23.090	8.940	4619.77	-963.00	963.06	179.25	40°04'29.837"N	104°41'35.586"W	2.31	
4896.00	22.660	7.000	4707.30	-999.57	999.62	184.37	40°04'30.198"N	104°41'35.520"W	0.91	
4990.00	22.840	9.100	4793.98	-1035.55	1035.61	189.46	40°04'30.554"N	104°41'35.455"W	0.88	
5085.00	22.950	7.240	4881.50	-1072.13	1072.19	194.71	40°04'30.916"N	104°41'35.387"W	0.77	
5180.00	22.000	10.300	4969.29	-1108.01	1108.07	200.23	40°04'31.270"N	104°41'35.316"W	1.59	
5275.00	21.460	11.080	5057.54	-1142.57	1142.63	206.75	40°04'31.612"N	104°41'35.232"W	0.64	
5370.00	18.930	9.510	5146.69	-1174.83	1174.89	212.64	40°04'31.930"N	104°41'35.157"W	2.72	
5465.00	19.760	11.710	5236.33	-1205.75	1205.81	218.44	40°04'32.236"N	104°41'35.082"W	1.16	
5559.00	20.170	11.820	5324.68	-1237.17	1237.24	224.99	40°04'32.547"N	104°41'34.998"W	0.44	
5654.00	17.830	9.910	5414.50	-1267.53	1267.60	230.85	40°04'32.847"N	104°41'34.922"W	2.55	
5749.00	17.160	10.330	5505.10	-1295.64	1295.71	235.86	40°04'33.124"N	104°41'34.858"W	0.72	
5843.00	14.770	6.870	5595.47	-1321.18	1321.26	239.78	40°04'33.377"N	104°41'34.807"W	2.74	
5938.00	14.420	16.170	5687.42	-1344.57	1344.64	244.53	40°04'33.608"N	104°41'34.746"W	2.49	
6032.00	11.430	11.130	5779.03	-1364.95	1365.03	249.59	40°04'33.809"N	104°41'34.681"W	3.40	
6127.00	11.010	10.160	5872.21	-1383.12	1383.19	253.00	40°04'33.989"N	104°41'34.637"W	0.48	
6222.00	9.220	5.930	5965.73	-1399.62	1399.69	255.39	40°04'34.152"N	104°41'34.607"W	2.04	
6317.00	7.750	353.890	6059.70	-1413.56	1413.64	255.49	40°04'34.290"N	104°41'34.605"W	2.42	
6411.00	4.800	350.100	6153.13	-1423.74	1423.81	254.14	40°04'34.390"N	104°41'34.623"W	3.17	
6506.00	2.910	344.870	6247.91	-1429.98	1430.06	252.83	40°04'34.452"N	104°41'34.640"W	2.02	
6600.00	1.090	275.880	6341.86	-1432.38	1432.45	251.32	40°04'34.476"N	104°41'34.659"W	2.89	
6695.00	0.170	330.550	6436.85	-1432.59	1432.67	250.35	40°04'34.478"N	104°41'34.672"W	1.05	
6789.00	7.680	165.530	6530.57	-1426.62	1426.70	251.85	40°04'34.419"N	104°41'34.652"W	8.35	
6884.00	14.630	163.160	6623.72	-1408.97	1409.05	256.92	40°04'34.244"N	104°41'34.587"W	7.33	
6979.00	21.080	161.630	6714.10	-1381.24	1381.32	265.79	40°04'33.970"N	104°41'34.473"W	6.81	
7074.00	28.940	173.250	6800.18	-1342.12	1342.20	273.89	40°04'33.584"N	104°41'34.369"W	9.72	
7169.00	35.830	182.370	6880.40	-1291.42	1291.50	275.45	40°04'33.083"N	104°41'34.349"W	8.87	
7263.00	44.910	181.520	6951.94	-1230.63	1230.71	273.43	40°04'32.482"N	104°41'34.375"W	9.68	
7280.00†	46.096	181.403	6963.86	-1218.51	1218.59	273.12	40°04'32.362"N	104°41'34.379"W	6.99	SSPG
7327.00†	49.376	181.102	6995.46	-1183.74	1183.82	272.36	40°04'32.019"N	104°41'34.388"W	6.99	NBR
7358.00	51.540	180.920	7015.20	-1159.84	1159.92	271.94	40°04'31.783"N	104°41'34.394"W	6.99	
7453.00	61.920	176.710	7067.26	-1080.57	1080.65	273.75	40°04'30.999"N	104°41'34.371"W	11.53	
7545.00†	70.004	178.170	7104.70	-996.70	996.78	277.47	40°04'30.170"N	104°41'34.323"W	8.91	N470_B_CK
7547.00	70.180	178.200	7105.38	-994.82	994.90	277.53	40°04'30.152"N	104°41'34.322"W	8.91	
7642.00	78.720	179.010	7130.83	-903.41	903.49	279.74	40°04'29.248"N	104°41'34.294"W	9.03	
7737.00	83.120	179.740	7145.82	-809.63	809.71	280.76	40°04'28.322"N	104°41'34.280"W	4.69	
7781.00	88.860	180.230	7148.89	-765.75	765.84	280.77	40°04'27.888"N	104°41'34.280"W	13.09	

REFERENCE WELLPATH IDENTIFICATION

Operator	KERR-MCGEE OIL & GAS ONSHORE LP (WA)	Slot	SLOT#13 GREEN 3N-8HZ (356'FNL & 958'FWL, SEC.08)
Area	COLORADO	Well	GREEN 3N-8HZ
Field	WELD COUNTY (UTM/TRUE NORTH)	Wellbore	GREEN 3N-8HZ AWP <13459>
Facility	SEC.08-T1N-R65W		

WELLPATH DATA (146 stations) † = interpolated/extrapolated station

MD [ft]	Inclination [°]	Azimuth [°]	TVD [ft]	Vert Sect [ft]	North [ft]	East [ft]	Latitude	Longitude	DLS [°/100ft]	Comments
7789.00†	88.957	180.167	7149.05	-757.76	757.84	280.74	40°04'27.809"N	104°41'34.281"W	1.45	LANDING POINT
7837.00	89.540	179.790	7149.68	-709.76	709.84	280.76	40°04'27.335"N	104°41'34.280"W	1.45	
7931.00	89.720	181.060	7150.28	-615.77	615.85	280.06	40°04'26.406"N	104°41'34.289"W	1.36	
8026.00	89.910	180.920	7150.59	-520.78	520.86	278.42	40°04'25.467"N	104°41'34.311"W	0.25	
8121.00	90.060	180.100	7150.61	-425.79	425.87	277.57	40°04'24.529"N	104°41'34.321"W	0.88	
8216.00	90.030	180.160	7150.54	-330.79	330.87	277.36	40°04'23.590"N	104°41'34.324"W	0.07	
8311.00	89.940	181.010	7150.56	-235.79	235.88	276.39	40°04'22.651"N	104°41'34.337"W	0.90	
8406.00	90.650	180.640	7150.07	-140.81	140.89	275.02	40°04'21.712"N	104°41'34.354"W	0.84	
8501.00	90.220	181.360	7149.35	-45.82	45.91	273.36	40°04'20.774"N	104°41'34.376"W	0.88	
8596.00	89.480	181.810	7149.60	49.14	-49.06	270.74	40°04'19.835"N	104°41'34.409"W	0.91	
8786.00	90.460	181.770	7149.70	239.04	-238.96	264.80	40°04'17.959"N	104°41'34.486"W	0.52	
8880.00	89.570	180.620	7149.68	333.02	-332.94	262.84	40°04'17.030"N	104°41'34.511"W	1.55	
9070.00	90.220	181.200	7150.03	522.99	-522.91	259.82	40°04'15.152"N	104°41'34.552"W	0.46	
9165.00	89.010	179.210	7150.66	617.98	-617.90	259.48	40°04'14.214"N	104°41'34.554"W	2.45	
9355.00	89.570	179.390	7153.02	807.95	-807.87	261.80	40°04'12.336"N	104°41'34.524"W	0.31	
9544.00	90.710	179.320	7152.56	996.94	-996.86	263.93	40°04'10.469"N	104°41'34.497"W	0.60	
9639.00	90.000	179.020	7151.97	1091.92	-1091.85	265.31	40°04'09.530"N	104°41'34.479"W	0.81	
9734.00	89.600	180.130	7152.30	1186.92	-1186.84	266.01	40°04'08.591"N	104°41'34.470"W	1.24	
9828.00	89.450	179.610	7153.08	1280.92	-1280.84	266.23	40°04'07.662"N	104°41'34.468"W	0.58	
9923.00	90.120	180.400	7153.44	1375.91	-1375.84	266.22	40°04'06.724"N	104°41'34.468"W	1.09	
10017.00	90.550	179.780	7152.89	1469.91	-1469.83	266.07	40°04'05.795"N	104°41'34.470"W	0.80	
10112.00	89.540	180.110	7152.81	1564.91	-1564.83	266.16	40°04'04.856"N	104°41'34.469"W	1.12	
10207.00	89.350	179.670	7153.73	1659.91	-1659.83	266.34	40°04'03.917"N	104°41'34.466"W	0.50	
10301.00	90.310	180.130	7154.01	1753.90	-1753.82	266.51	40°04'02.988"N	104°41'34.464"W	1.13	
10396.00	90.890	179.840	7153.02	1848.90	-1848.82	266.53	40°04'02.050"N	104°41'34.464"W	0.68	
10491.00	90.310	180.620	7152.02	1943.89	-1943.81	266.15	40°04'01.111"N	104°41'34.469"W	1.02	
10586.00	89.940	180.600	7151.81	2038.88	-2038.81	265.14	40°04'00.172"N	104°41'34.482"W	0.39	
10681.00	89.540	181.120	7152.24	2133.87	-2133.79	263.71	40°03'59.233"N	104°41'34.500"W	0.69	
10775.00	90.090	180.650	7152.55	2227.86	-2227.78	262.26	40°03'58.305"N	104°41'34.519"W	0.77	
10870.00	90.060	181.200	7152.42	2322.85	-2322.77	260.73	40°03'57.366"N	104°41'34.539"W	0.58	
10965.00	90.520	181.340	7151.94	2417.82	-2417.74	258.62	40°03'56.427"N	104°41'34.566"W	0.51	
11060.00	90.590	181.060	7151.02	2512.79	-2512.72	256.63	40°03'55.489"N	104°41'34.591"W	0.30	
11155.00	89.970	181.270	7150.56	2607.77	-2607.70	254.70	40°03'54.550"N	104°41'34.616"W	0.69	
11250.00	90.150	181.710	7150.46	2702.74	-2702.66	252.23	40°03'53.612"N	104°41'34.648"W	0.50	
11345.00	89.820	182.230	7150.48	2797.68	-2797.61	248.97	40°03'52.673"N	104°41'34.690"W	0.65	
11440.00	89.510	180.510	7151.04	2892.65	-2892.58	246.69	40°03'51.735"N	104°41'34.719"W	1.84	
11534.00	88.770	180.860	7152.45	2986.63	-2986.56	245.57	40°03'50.806"N	104°41'34.734"W	0.87	
11629.00	88.740	181.440	7154.51	3081.59	-3081.52	243.66	40°03'49.868"N	104°41'34.758"W	0.61	
11724.00	89.290	181.180	7156.15	3176.55	-3176.48	241.49	40°03'48.929"N	104°41'34.786"W	0.64	
11819.00	90.030	179.770	7156.71	3271.54	-3271.47	240.71	40°03'47.991"N	104°41'34.796"W	1.68	
11913.00	89.880	179.730	7156.78	3365.54	-3365.47	241.12	40°03'47.062"N	104°41'34.791"W	0.17	
12008.00	90.680	179.350	7156.32	3460.53	-3460.46	241.88	40°03'46.123"N	104°41'34.781"W	0.93	
12102.00	90.990	179.540	7154.95	3554.52	-3554.45	242.79	40°03'45.194"N	104°41'34.769"W	0.39	
12197.00	90.860	179.610	7153.42	3649.50	-3649.43	243.49	40°03'44.256"N	104°41'34.760"W	0.16	
12292.00	90.980	179.240	7151.89	3744.49	-3744.42	244.45	40°03'43.317"N	104°41'34.748"W	0.41	

REFERENCE WELLPATH IDENTIFICATION			
Operator	KERR-MCGEE OIL & GAS ONSHORE LP (WA)	Slot	SLOT#13 GREEN 3N-8HZ (356'FNL & 958'FWL, SEC.08)
Area	COLORADO	Well	GREEN 3N-8HZ
Field	WELD COUNTY (UTM/TRUE NORTH)	Wellbore	GREEN 3N-8HZ AWB <13459>
Facility	SEC.08-T1N-R65W		

WELLPATH DATA (146 stations)										
MD [ft]	Inclination [°]	Azimuth [°]	TVD [ft]	Vert Sect [ft]	North [ft]	East [ft]	Latitude	Longitude	DLS [°/100ft]	Comments
12386.00	91.390	179.660	7149.95	3838.46	-3838.39	245.35	40°03'42.388"N	104°41'34.736"W	0.62	
12481.00	90.220	179.320	7148.61	3933.45	-3933.38	246.19	40°03'41.450"N	104°41'34.726"W	1.28	
12576.00	90.180	179.840	7148.28	4028.45	-4028.37	246.89	40°03'40.511"N	104°41'34.717"W	0.55	
12671.00	90.800	179.970	7147.47	4123.44	-4123.37	247.05	40°03'39.572"N	104°41'34.715"W	0.67	
12766.00	90.250	179.270	7146.60	4218.43	-4218.36	247.68	40°03'38.633"N	104°41'34.707"W	0.94	
12861.00	90.800	179.350	7145.73	4313.42	-4313.35	248.82	40°03'37.695"N	104°41'34.692"W	0.59	
12955.00	89.660	178.350	7145.35	4407.40	-4407.33	250.71	40°03'36.766"N	104°41'34.668"W	1.61	
13049.00	89.780	178.610	7145.81	4501.37	-4501.29	253.20	40°03'35.837"N	104°41'34.636"W	0.30	
13239.00	88.830	177.450	7148.11	4691.24	-4691.16	259.73	40°03'33.961"N	104°41'34.552"W	0.79	
13398.00	89.290	177.690	7150.72	4850.08	-4850.00	266.47	40°03'32.391"N	104°41'34.465"W	0.33	LAST BHI MWD+IFR SURVEYS
13459.00	89.290	177.690	7151.48	4911.02	-4910.94	268.93	40°03'31.789"N	104°41'34.433"W	0.00	PROJECTION TO BIT

HOLE & CASING SECTIONS - Ref Wellbore: GREEN 3N-8HZ AWB <13459> Ref Wellpath: GREEN 3N-8HZ AWP									
String/Diameter	Start MD [ft]	End MD [ft]	Interval [ft]	Start TVD [ft]	End TVD [ft]	Start N/S [ft]	Start E/W [ft]	End N/S [ft]	End E/W [ft]
13.5in Open Hole	16.00	1586.00	1570.00	16.00	1585.99	0.00	0.00	0.04	-0.67
9.625in Casing Surface	16.00	1576.00	1560.00	16.00	1575.99	0.00	0.00	-0.01	-0.69
7.875in Open Hole	1586.00	13459.00	11873.00	1585.99	7151.48	0.04	-0.67	-4910.94	268.93

TARGETS								
Name	TVD [ft]	North [ft]	East [ft]	Grid East [US ft]	Grid North [US ft]	Latitude	Longitude	Shape
SEC.05-T1N-R65W SECTION LINES	7137.00	723.50	1965.16	1728023.23	14553942.30	40°04'27.469"N	104°41'12.613"W	polygon
SEC.08-T1N-R65W SECTION LINES	7137.00	-1.82	-89.87	1725971.51	14553210.20	40°04'20.302"N	104°41'39.048"W	polygon
GREEN 3N-8HZ BHL REV-2 (1'FSL & 1152'FWL, SEC.08)	7153.00	-4936.14	261.10	1726339.31	14548279.06	40°03'31.540"N	104°41'34.534"W	point
GREEN 3N-8HZ LANDBOX	7153.00	-1.11	-59.94	1726001.43	14553211.02	40°04'20.309"N	104°41'38.663"W	polygon
GREEN 3N-8HZ BHL ON PLAT REV-1 (1'FSL & 1152'FWL, SEC.08)	7212.00	-4936.14	261.10	1726339.31	14548279.06	40°03'31.540"N	104°41'34.534"W	point

WELLPATH COMPOSITION - Ref Wellbore: GREEN 3N-8HZ AWB <13459> Ref Wellpath: GREEN 3N-8HZ AWP				
Start MD [ft]	End MD [ft]	Positional Uncertainty Model	Log Name/Comment	Wellbore
16.00	1536.00	Custom APC_ISCWSA REV 2 MWD	CATHEDRAL MWD SURVEYS 13.5" <129-1536>	GREEN 3N-8HZ AWB <13459>
1536.00	13398.00	Custom APC_ISCWSA REV 2 MWD+IFR1+SC (approximation)	BHI MWD+IFR SURVEYS 7 .875" <1672-13398>	GREEN 3N-8HZ AWB <13459>
13398.00	13459.00	Blind Drilling (std)	Projection to bit	GREEN 3N-8HZ AWB <13459>

REFERENCE WELLPATH IDENTIFICATION			
Operator	KERR-MCGEE OIL & GAS ONSHORE LP (WA)	Slot	SLOT#13 GREEN 3N-8HZ (356'FNL & 958'FWL, SEC.08)
Area	COLORADO	Well	GREEN 3N-8HZ
Field	WELD COUNTY (UTM/TRUE NORTH)	Wellbore	GREEN 3N-8HZ AWB <13459>
Facility	SEC.08-T1N-R65W		

WELLPATH COMMENTS				
MD [ft]	Inclination [°]	Azimuth [°]	TVD [ft]	Comment
129.00	0.000	0.000	129.00	BEGIN MWD SURVEYS
1536.00	0.400	46.200	1535.99	TIE-ONTO MWD SURVEYS
1672.00	0.350	333.370	1671.99	BEGIN BHI MWD+IFR SURVEYS
7280.00	46.096	181.403	6963.86	SSPG
7327.00	49.376	181.102	6995.46	NBRR
7545.00	70.004	178.170	7104.70	N470_B_CK
7789.00	88.957	180.167	7149.05	LANDING POINT
13398.00	89.290	177.690	7150.72	LAST BHI MWD+IFR SURVEYS
13459.00	89.290	177.690	7151.48	PROJECTION TO BIT