

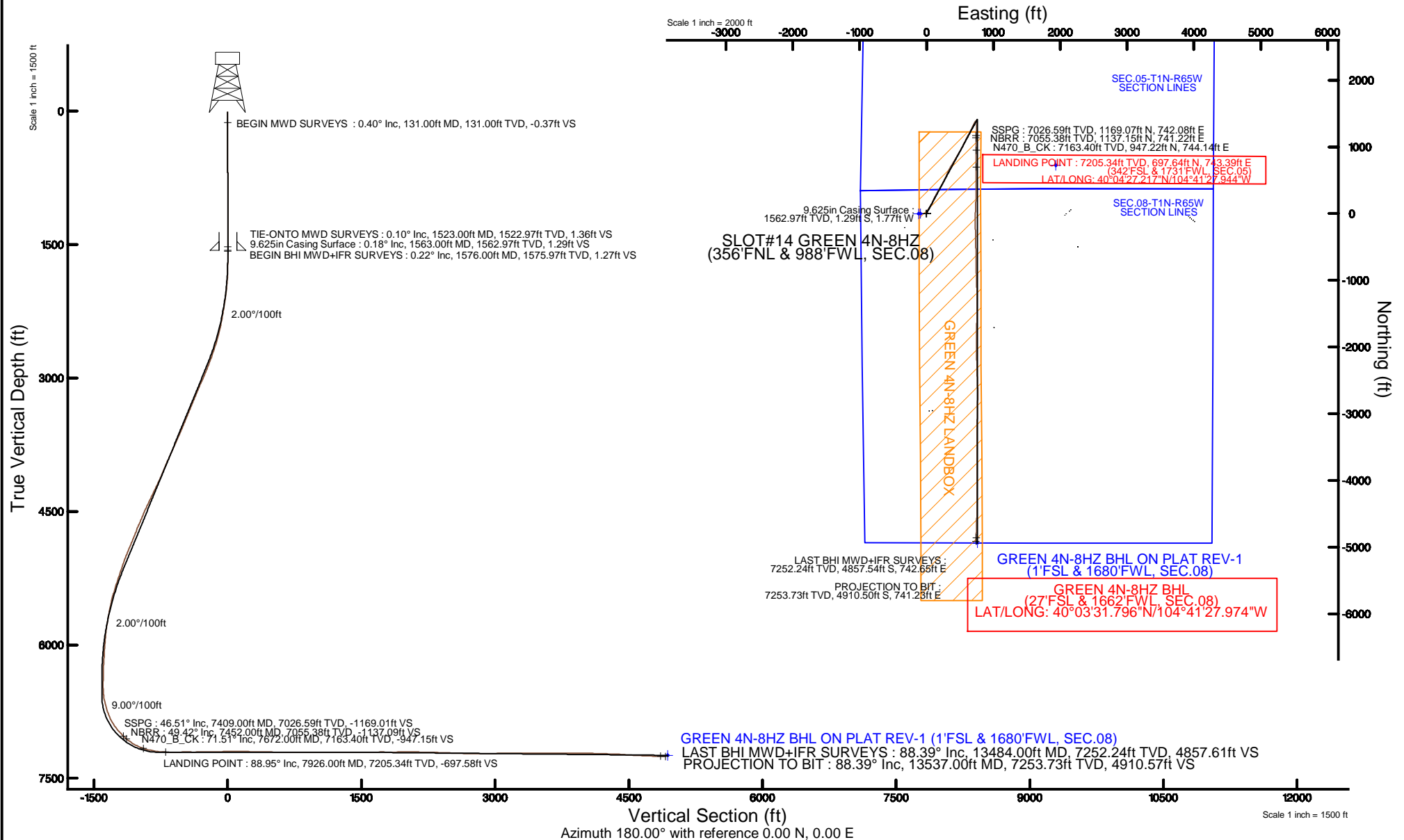
KERR-MCGEE OIL & GAS ONSHORE LP (WA)

Location: COLORADO Slot: SLOT#14 GREEN 4N-8HZ (356'FNL & 988'FWL, SEC.08)
Field: WELD COUNTY (UTM/TRUE NORTH) Well: GREEN 4N-8HZ
Facility: SEC.08-T1N-R65W Wellbore: GREEN 4N-8HZ PWB



Plot reference wellpath is GREEN 4N-8HZ (REV-A.0) PWP

True vertical depths are referenced to XTREME 24 (16'KB) (RKB)	Grid System: NAD83 / UTM Zone 13 North, US feet
Measured depths are referenced to XTREME 24 (16'KB) (RKB)	North Reference: True north
XTREME 24 (16'KB) (RKB) to Mean Sea Level: 4987 feet	Scale: True distance
Mean Sea Level to Mud line (At Slot: SLOT#14 GREEN 4N-8HZ (356'FNL & 988'FWL, SEC.08)): 0 feet	Depths are in feet
Coordinates are in feet referenced to Slot	Created by: amarc on 02/Jun/2015



REFERENCE WELLPATH IDENTIFICATION			
Operator	KERR-MCGEE OIL & GAS ONSHORE LP (WA)	Slot	SLOT#14 GREEN 4N-8HZ (356'FNL & 988'FWL, SEC.08)
Area	COLORADO	Well	GREEN 4N-8HZ
Field	WELD COUNTY (UTM/TRUE NORTH)	Wellbore	GREEN 4N-8HZ AWB <13537>
Facility	SEC.08-T1N-R65W		

REPORT SETUP INFORMATION			
Projection System	NAD83 / UTM Zone 13 North, US feet	Software System	WellArchitect® 4.0.0
North Reference	True	User	Amarcar
Scale	0.999608	Report Generated	02/Jun/2015 at 11:19
Convergence at slot	0.20° East	Database/Source file	KERR MCGEE UTM/GREEN_4N-8HZ_AWB__13537_.xml

WELLPATH LOCATION						
	Local coordinates		Grid coordinates		Geographic coordinates	
	North[ft]	East[ft]	Easting[US ft]	Northing[US ft]	Latitude	Longitude
Slot Location	387.12	-3630.43	1726091.26	14553212.74	40°04'20.323"N	104°41'37.507"W
Facility Reference Pt			1729721.63	14552838.79	40°04'16.500"N	104°40'50.808"W
Field Reference Pt			1698235.31	14552047.82	40°04'09.600"N	104°47'36.000"W

WELLPATH DATUM			
Calculation method	Minimum curvature	XTREME 24 (16'KB) (RKB) to Facility Vertical Datum	4987.00ft
Horizontal Reference Pt	Slot	XTREME 24 (16'KB) (RKB) to Mean Sea Level	4987.00ft
Vertical Reference Pt	XTREME 24 (16'KB) (RKB)	XTREME 24 (16'KB) (RKB) to Mud Line at Slot (SLOT#14 GREEN 4N-8HZ (356'FNL & 988'FWL, SEC.08))	4987.00ft
MD Reference Pt	XTREME 24 (16'KB) (RKB)	Section Origin	N 0.00, E 0.00 ft
Field Vertical Reference	Mean Sea Level	Section Azimuth	180.00°

REFERENCE WELLPATH IDENTIFICATION

Operator	KERR-MCGEE OIL & GAS ONSHORE LP (WA)	Slot	SLOT#14 GREEN 4N-8HZ (356'FNL & 988'FWL, SEC.08)
Area	COLORADO	Well	GREEN 4N-8HZ
Field	WELD COUNTY (UTM/TRUE NORTH)	Wellbore	GREEN 4N-8HZ AWP <13537>
Facility	SEC.08-T1N-R65W		

WELLPATH DATA (150 stations) † = interpolated/extrapolated station

MD [ft]	Inclination [°]	Azimuth [°]	TVD [ft]	Vert Sect [ft]	North [ft]	East [ft]	Latitude	Longitude	DLS [°/100ft]	Comments
0.00†	0.000	338.400	0.00	0.00	0.00	0.00	40°04'20.323"N	104°41'37.507"W	0.00	
16.00	0.000	338.400	16.00	0.00	0.00	0.00	40°04'20.323"N	104°41'37.507"W	0.00	
131.00	0.400	338.400	131.00	-0.37	0.37	-0.15	40°04'20.327"N	104°41'37.509"W	0.35	BEGIN MWD SURVEYS
208.00	0.800	306.400	207.99	-0.94	0.94	-0.68	40°04'20.332"N	104°41'37.516"W	0.66	
288.00	0.100	278.300	287.99	-1.28	1.28	-1.20	40°04'20.336"N	104°41'37.522"W	0.89	
368.00	0.300	353.700	367.99	-1.50	1.50	-1.29	40°04'20.338"N	104°41'37.524"W	0.36	
448.00	0.600	162.900	447.99	-1.31	1.31	-1.19	40°04'20.336"N	104°41'37.522"W	1.12	
528.00	0.500	173.700	527.99	-0.56	0.56	-1.03	40°04'20.329"N	104°41'37.520"W	0.18	
608.00	0.400	165.300	607.98	0.05	-0.05	-0.92	40°04'20.322"N	104°41'37.519"W	0.15	
688.00	0.600	210.300	687.98	0.69	-0.69	-1.06	40°04'20.316"N	104°41'37.521"W	0.53	
768.00	0.300	226.200	767.98	1.19	-1.19	-1.42	40°04'20.311"N	104°41'37.525"W	0.40	
848.00	0.300	194.000	847.98	1.54	-1.54	-1.62	40°04'20.308"N	104°41'37.528"W	0.21	
928.00	0.300	221.700	927.98	1.90	-1.90	-1.81	40°04'20.304"N	104°41'37.530"W	0.18	
1008.00	0.200	299.000	1007.98	1.99	-1.99	-2.08	40°04'20.303"N	104°41'37.534"W	0.40	
1088.00	0.300	202.500	1087.98	2.12	-2.12	-2.28	40°04'20.302"N	104°41'37.536"W	0.47	
1168.00	0.400	61.300	1167.98	2.17	-2.17	-2.11	40°04'20.302"N	104°41'37.534"W	0.83	
1248.00	0.200	347.500	1247.97	1.90	-1.90	-1.90	40°04'20.304"N	104°41'37.531"W	0.49	
1328.00	0.000	0.000	1327.97	1.77	-1.77	-1.93	40°04'20.306"N	104°41'37.532"W	0.25	
1408.00	0.200	324.500	1407.97	1.65	-1.65	-2.01	40°04'20.307"N	104°41'37.533"W	0.25	
1488.00	0.300	59.000	1487.97	1.43	-1.43	-1.91	40°04'20.309"N	104°41'37.532"W	0.47	
1523.00	0.100	10.300	1522.97	1.36	-1.36	-1.83	40°04'20.310"N	104°41'37.531"W	0.70	TIE-ONTO MWD SURVEYS
1576.00	0.220	64.310	1575.97	1.27	-1.27	-1.73	40°04'20.310"N	104°41'37.529"W	0.34	BEGIN BHI MWD+IFR SURVEYS
1671.00	0.330	82.660	1670.97	1.15	-1.15	-1.29	40°04'20.312"N	104°41'37.524"W	0.15	
1765.00	2.490	62.480	1764.94	0.17	-0.17	0.79	40°04'20.321"N	104°41'37.497"W	2.32	
1860.00	3.320	21.690	1859.82	-3.34	3.34	3.64	40°04'20.356"N	104°41'37.460"W	2.28	
1955.00	5.350	14.290	1954.55	-10.18	10.19	5.75	40°04'20.424"N	104°41'37.433"W	2.21	
2050.00	6.920	13.290	2049.00	-20.05	20.05	8.15	40°04'20.521"N	104°41'37.402"W	1.66	
2145.00	9.450	20.020	2143.03	-32.95	32.95	12.14	40°04'20.649"N	104°41'37.351"W	2.84	
2239.00	10.210	30.420	2235.66	-47.38	47.38	19.00	40°04'20.791"N	104°41'37.263"W	2.05	
2334.00	11.790	30.560	2328.91	-63.00	63.00	28.20	40°04'20.946"N	104°41'37.144"W	1.66	
2429.00	14.570	33.750	2421.40	-81.29	81.30	39.78	40°04'21.126"N	104°41'36.995"W	3.02	
2523.00	16.580	31.160	2511.94	-102.60	102.61	53.29	40°04'21.337"N	104°41'36.822"W	2.26	
2618.00	19.550	29.160	2602.25	-128.09	128.09	68.05	40°04'21.589"N	104°41'36.632"W	3.19	
2713.00	20.420	25.870	2691.53	-156.88	156.89	83.02	40°04'21.873"N	104°41'36.439"W	1.50	
2808.00	21.660	23.730	2780.20	-187.84	187.85	97.31	40°04'22.179"N	104°41'36.255"W	1.54	
2902.00	23.140	23.860	2867.10	-220.62	220.62	111.76	40°04'22.503"N	104°41'36.069"W	1.58	
2997.00	25.510	27.830	2953.67	-255.78	255.79	128.87	40°04'22.851"N	104°41'35.849"W	3.03	
3092.00	27.280	29.640	3038.76	-292.80	292.81	149.19	40°04'23.217"N	104°41'35.588"W	2.05	
3187.00	26.940	31.120	3123.33	-330.14	330.16	171.08	40°04'23.586"N	104°41'35.306"W	0.80	
3282.00	24.250	29.670	3209.00	-365.52	365.54	191.86	40°04'23.935"N	104°41'35.039"W	2.91	
3377.00	25.130	31.040	3295.31	-399.76	399.77	211.92	40°04'24.274"N	104°41'34.781"W	1.10	
3471.00	25.650	30.070	3380.23	-434.46	434.48	232.41	40°04'24.617"N	104°41'34.517"W	0.71	
3566.00	24.830	25.940	3466.17	-470.20	470.22	251.44	40°04'24.970"N	104°41'34.273"W	2.04	
3662.00	25.120	27.200	3553.19	-506.44	506.47	269.57	40°04'25.328"N	104°41'34.039"W	0.63	
3756.00	26.270	21.620	3637.91	-543.53	543.56	286.35	40°04'25.695"N	104°41'33.823"W	2.85	

REFERENCE WELLPATH IDENTIFICATION			
Operator	KERR-MCGEE OIL & GAS ONSHORE LP (WA)	Slot	SLOT#14 GREEN 4N-8HZ (356'FNL & 988'FWL, SEC.08)
Area	COLORADO	Well	GREEN 4N-8HZ
Field	WELD COUNTY (UTM/TRUE NORTH)	Wellbore	GREEN 4N-8HZ AWP <13537>
Facility	SEC.08-T1N-R65W		

WELLPATH DATA (150 stations) † = interpolated/extrapolated station										
MD [ft]	Inclination [°]	Azimuth [°]	TVD [ft]	Vert Sect [ft]	North [ft]	East [ft]	Latitude	Longitude	DLS [°/100ft]	Comments
3851.00	24.860	23.340	3723.61	-581.41	581.44	302.01	40°04'26.069"N	104°41'33.622"W	1.68	
3946.00	26.710	25.720	3809.15	-618.99	619.01	319.19	40°04'26.440"N	104°41'33.401"W	2.23	
4041.00	26.580	27.080	3894.06	-657.14	657.17	338.13	40°04'26.817"N	104°41'33.157"W	0.66	
4135.00	25.810	31.020	3978.41	-693.41	693.44	358.25	40°04'27.176"N	104°41'32.899"W	2.02	
4230.00	26.490	30.620	4063.68	-729.36	729.39	379.70	40°04'27.531"N	104°41'32.623"W	0.74	
4325.00	28.140	31.490	4148.09	-766.70	766.73	402.20	40°04'27.900"N	104°41'32.333"W	1.79	
4420.00	28.400	28.900	4231.76	-805.58	805.62	424.82	40°04'28.284"N	104°41'32.042"W	1.32	
4515.00	29.600	31.360	4314.85	-845.39	845.43	447.95	40°04'28.678"N	104°41'31.745"W	1.78	
4610.00	29.130	30.590	4397.65	-885.33	885.37	471.93	40°04'29.072"N	104°41'31.436"W	0.63	
4705.00	27.450	30.740	4481.30	-924.06	924.10	494.89	40°04'29.455"N	104°41'31.141"W	1.77	
4800.00	26.710	30.240	4565.88	-961.32	961.36	516.83	40°04'29.823"N	104°41'30.859"W	0.81	
4895.00	25.100	27.430	4651.34	-997.65	997.70	536.87	40°04'30.182"N	104°41'30.601"W	2.13	
4989.00	23.540	24.920	4736.99	-1032.37	1032.42	553.96	40°04'30.526"N	104°41'30.381"W	1.99	
5084.00	24.720	24.650	4823.69	-1067.63	1067.68	570.24	40°04'30.874"N	104°41'30.172"W	1.25	
5179.00	24.220	25.850	4910.16	-1103.22	1103.27	587.02	40°04'31.226"N	104°41'29.956"W	0.74	
5274.00	23.620	25.480	4997.00	-1137.94	1137.99	603.71	40°04'31.569"N	104°41'29.741"W	0.65	
5369.00	22.560	30.200	5084.39	-1170.87	1170.92	621.06	40°04'31.894"N	104°41'29.518"W	2.24	
5464.00	20.760	30.010	5172.68	-1201.20	1201.25	638.65	40°04'32.194"N	104°41'29.291"W	1.90	
5559.00	20.980	29.480	5261.45	-1230.58	1230.64	655.44	40°04'32.484"N	104°41'29.075"W	0.31	
5653.00	19.420	26.360	5349.67	-1259.23	1259.29	670.67	40°04'32.767"N	104°41'28.880"W	2.02	
5748.00	16.680	22.800	5439.99	-1285.96	1286.02	682.96	40°04'33.032"N	104°41'28.721"W	3.11	
5842.00	13.840	27.220	5530.67	-1308.40	1308.46	693.34	40°04'33.253"N	104°41'28.588"W	3.26	
5937.00	12.760	29.070	5623.12	-1327.67	1327.73	703.63	40°04'33.444"N	104°41'28.456"W	1.22	
6031.00	10.420	19.790	5715.20	-1344.75	1344.81	711.55	40°04'33.613"N	104°41'28.354"W	3.18	
6126.00	8.750	27.780	5808.88	-1359.22	1359.29	717.83	40°04'33.756"N	104°41'28.273"W	2.24	
6221.00	7.060	37.100	5902.98	-1370.27	1370.34	724.72	40°04'33.865"N	104°41'28.184"W	2.23	
6316.00	6.720	50.080	5997.29	-1378.50	1378.56	732.51	40°04'33.946"N	104°41'28.084"W	1.67	
6410.00	5.050	50.060	6090.80	-1384.68	1384.75	739.90	40°04'34.007"N	104°41'27.989"W	1.78	
6505.00	4.300	42.790	6185.48	-1389.98	1390.04	745.52	40°04'34.060"N	104°41'27.917"W	1.00	
6599.00	3.400	51.130	6279.27	-1394.31	1394.38	750.09	40°04'34.102"N	104°41'27.858"W	1.13	
6694.00	1.690	49.440	6374.17	-1396.99	1397.06	753.35	40°04'34.129"N	104°41'27.816"W	1.80	
6788.00	0.820	100.290	6468.15	-1397.77	1397.84	755.06	40°04'34.137"N	104°41'27.794"W	1.42	
6883.00	6.650	180.420	6562.93	-1392.15	1392.21	755.69	40°04'34.081"N	104°41'27.786"W	6.90	
6978.00	13.790	184.290	6656.36	-1375.33	1375.40	754.80	40°04'33.915"N	104°41'27.797"W	7.55	
7073.00	18.340	184.690	6747.63	-1349.13	1349.20	752.73	40°04'33.656"N	104°41'27.824"W	4.79	
7168.00	25.640	183.130	6835.66	-1313.67	1313.73	750.38	40°04'33.305"N	104°41'27.854"W	7.71	
7263.00	35.950	183.550	6917.15	-1265.18	1265.24	747.53	40°04'32.826"N	104°41'27.891"W	10.85	
7357.00	43.000	183.510	6989.67	-1205.57	1205.64	743.85	40°04'32.237"N	104°41'27.938"W	7.50	
7409.00†	46.508	182.087	7026.59	-1169.01	1169.07	742.08	40°04'31.876"N	104°41'27.961"W	7.01	SSPG
7452.00	49.420	181.030	7055.38	-1137.09	1137.15	741.22	40°04'31.560"N	104°41'27.972"W	7.01	NBRR
7547.00	58.340	178.510	7111.33	-1060.44	1060.50	741.62	40°04'30.803"N	104°41'27.967"W	9.63	
7641.00	69.030	178.720	7152.94	-976.33	976.39	743.65	40°04'29.972"N	104°41'27.941"W	11.37	
7672.00†	71.511	179.354	7163.40	-947.15	947.22	744.14	40°04'29.683"N	104°41'27.935"W	8.23	N470_B_CK
7736.00	76.640	180.610	7180.96	-885.63	885.69	744.15	40°04'29.076"N	104°41'27.935"W	8.23	
7831.00	82.430	179.650	7198.21	-792.25	792.32	743.94	40°04'28.153"N	104°41'27.937"W	6.18	

Actual Wellpath Report

GREEN 4N-8HZ AWP

Page 4 of 6

REFERENCE WELLPATH IDENTIFICATION			
Operator	KERR-MCGEE OIL & GAS ONSHORE LP (WA)	Slot	SLOT#14 GREEN 4N-8HZ (356'FNL & 988'FWL, SEC.08)
Area	COLORADO	Well	GREEN 4N-8HZ
Field	WELD COUNTY (UTM/TRUE NORTH)	Wellbore	GREEN 4N-8HZ AWB <13537>
Facility	SEC.08-T1N-R65W		

WELLPATH DATA (150 stations)

MD [ft]	Inclination [°]	Azimuth [°]	TVD [ft]	Vert Sect [ft]	North [ft]	East [ft]	Latitude	Longitude	DLS [°/100ft]	Comments
7926.00	88.950	181.010	7205.34	-697.58	697.64	743.39	40°04'27.217"N	104°41'27.944"W	7.01	LANDING POINT
8021.00	90.430	180.450	7205.86	-602.59	602.65	742.18	40°04'26.278"N	104°41'27.960"W	1.67	
8116.00	90.210	179.040	7205.33	-507.59	507.66	742.60	40°04'25.340"N	104°41'27.955"W	1.50	
8211.00	89.720	180.470	7205.38	-412.60	412.66	743.01	40°04'24.401"N	104°41'27.949"W	1.59	
8305.00	90.610	180.220	7205.11	-318.60	318.66	742.44	40°04'23.472"N	104°41'27.957"W	0.98	
8400.00	90.550	182.470	7204.15	-223.64	223.70	740.21	40°04'22.534"N	104°41'27.985"W	2.37	
8495.00	91.630	182.820	7202.34	-128.76	128.82	735.83	40°04'21.596"N	104°41'28.042"W	1.20	
8685.00	90.550	180.710	7198.73	61.10	-61.04	729.98	40°04'19.720"N	104°41'28.117"W	1.25	
8780.00	89.010	179.100	7199.09	156.10	-156.03	730.14	40°04'18.781"N	104°41'28.115"W	2.35	
8875.00	89.160	178.840	7200.61	251.07	-251.01	731.85	40°04'17.842"N	104°41'28.093"W	0.32	
8970.00	89.630	178.560	7201.61	346.04	-345.98	734.00	40°04'16.904"N	104°41'28.066"W	0.58	
9065.00	88.300	178.670	7203.33	441.00	-440.93	736.30	40°04'15.966"N	104°41'28.036"W	1.40	
9160.00	88.240	178.490	7206.20	535.92	-535.86	738.65	40°04'15.027"N	104°41'28.006"W	0.20	
9255.00	89.010	179.400	7208.48	630.88	-630.81	740.40	40°04'14.089"N	104°41'27.983"W	1.25	
9349.00	89.590	178.900	7209.63	724.86	-724.80	741.79	40°04'13.160"N	104°41'27.965"W	0.81	
9444.00	89.750	179.090	7210.17	819.84	-819.78	743.46	40°04'12.222"N	104°41'27.944"W	0.26	
9538.00	90.640	178.240	7209.85	913.82	-913.75	745.65	40°04'11.293"N	104°41'27.916"W	1.31	
9633.00	90.830	177.750	7208.63	1008.75	-1008.69	748.97	40°04'10.355"N	104°41'27.873"W	0.55	
9728.00	90.240	178.920	7207.75	1103.70	-1103.64	751.73	40°04'09.417"N	104°41'27.838"W	1.38	
9823.00	90.300	179.580	7207.30	1198.69	-1198.63	752.98	40°04'08.478"N	104°41'27.822"W	0.70	
9917.00	89.630	178.560	7207.36	1292.68	-1292.61	754.50	40°04'07.549"N	104°41'27.802"W	1.30	
10012.00	89.850	180.180	7207.79	1387.67	-1387.60	755.55	40°04'06.610"N	104°41'27.789"W	1.72	
10106.00	89.780	179.570	7208.09	1481.67	-1481.60	755.75	40°04'05.681"N	104°41'27.786"W	0.65	
10201.00	91.260	182.250	7207.23	1576.64	-1576.58	754.24	40°04'04.743"N	104°41'27.806"W	3.22	
10295.00	90.650	181.910	7205.66	1670.57	-1670.50	750.83	40°04'03.815"N	104°41'27.850"W	0.74	
10390.00	89.630	181.260	7205.43	1765.53	-1765.46	748.20	40°04'02.876"N	104°41'27.883"W	1.27	
10486.00	90.060	180.600	7205.69	1861.51	-1861.45	746.65	40°04'01.928"N	104°41'27.903"W	0.82	
10580.00	91.330	179.370	7204.55	1955.50	-1955.44	746.67	40°04'00.999"N	104°41'27.903"W	1.88	
10675.00	89.470	178.890	7203.89	2050.49	-2050.42	748.11	40°04'00.060"N	104°41'27.885"W	2.02	
10770.00	88.860	178.740	7205.27	2145.46	-2145.39	750.08	40°03'59.122"N	104°41'27.859"W	0.66	
10865.00	89.070	177.650	7206.99	2240.39	-2240.33	753.07	40°03'58.184"N	104°41'27.821"W	1.17	
10959.00	88.090	178.900	7209.32	2334.32	-2334.25	755.90	40°03'57.255"N	104°41'27.785"W	1.69	
11054.00	87.690	178.160	7212.81	2429.22	-2429.15	758.33	40°03'56.317"N	104°41'27.753"W	0.88	
11149.00	87.600	177.430	7216.72	2524.07	-2524.00	761.99	40°03'55.380"N	104°41'27.706"W	0.77	
11244.00	88.610	178.510	7219.86	2618.96	-2618.89	765.35	40°03'54.442"N	104°41'27.663"W	1.56	
11339.00	89.350	180.250	7221.55	2713.93	-2713.86	766.38	40°03'53.504"N	104°41'27.650"W	1.99	
11434.00	90.030	181.560	7222.07	2808.92	-2808.85	764.88	40°03'52.565"N	104°41'27.669"W	1.55	
11529.00	90.280	181.130	7221.81	2903.89	-2903.82	762.65	40°03'51.627"N	104°41'27.698"W	0.52	
11624.00	90.830	181.180	7220.89	2998.86	-2998.80	760.73	40°03'50.688"N	104°41'27.723"W	0.58	
11718.00	91.660	181.770	7218.85	3092.81	-3092.74	758.31	40°03'49.760"N	104°41'27.754"W	1.08	
11813.00	91.010	181.990	7216.63	3187.73	-3187.67	755.20	40°03'48.822"N	104°41'27.794"W	0.72	
11908.00	90.000	181.100	7215.80	3282.69	-3282.63	752.64	40°03'47.883"N	104°41'27.827"W	1.42	
12002.00	89.070	179.770	7216.56	3376.68	-3376.62	751.92	40°03'46.954"N	104°41'27.836"W	1.73	
12097.00	90.150	179.610	7217.20	3471.68	-3471.61	752.44	40°03'46.016"N	104°41'27.830"W	1.15	
12192.00	89.750	179.850	7217.29	3566.68	-3566.61	752.88	40°03'45.077"N	104°41'27.824"W	0.49	

Actual Wellpath Report

GREEN 4N-8HZ AWP

Page 5 of 6

REFERENCE WELLPATH IDENTIFICATION			
Operator	KERR-MCGEE OIL & GAS ONSHORE LP (WA)	Slot	SLOT#14 GREEN 4N-8HZ (356'FNL & 988'FWL, SEC.08)
Area	COLORADO	Well	GREEN 4N-8HZ
Field	WELD COUNTY (UTM/TRUE NORTH)	Wellbore	GREEN 4N-8HZ AWB <13537>
Facility	SEC.08-T1N-R65W		

WELLPATH DATA (150 stations)										
MD [ft]	Inclination [°]	Azimuth [°]	TVD [ft]	Vert Sect [ft]	North [ft]	East [ft]	Latitude	Longitude	DLS [°/100ft]	Comments
12286.00	90.150	179.690	7217.37	3660.67	-3660.61	753.26	40°03'44.148"N	104°41'27.819"W	0.46	
12381.00	88.890	178.300	7218.17	3755.65	-3755.59	754.93	40°03'43.209"N	104°41'27.798"W	1.97	
12476.00	90.330	179.690	7218.81	3850.63	-3850.56	756.59	40°03'42.271"N	104°41'27.776"W	2.11	
12570.00	90.360	179.840	7218.25	3944.63	-3944.56	756.98	40°03'41.342"N	104°41'27.771"W	0.16	
12666.00	89.040	179.500	7218.75	4040.62	-4040.56	757.53	40°03'40.393"N	104°41'27.764"W	1.42	
12760.00	87.990	180.230	7221.18	4134.59	-4134.52	757.75	40°03'39.465"N	104°41'27.761"W	1.36	
12855.00	88.050	180.240	7224.47	4229.53	-4229.47	757.36	40°03'38.526"N	104°41'27.767"W	0.06	
12950.00	88.300	179.950	7227.49	4324.48	-4324.42	757.21	40°03'37.588"N	104°41'27.769"W	0.40	
13044.00	86.200	180.900	7232.00	4418.37	-4418.30	756.51	40°03'36.660"N	104°41'27.778"W	2.45	
13138.00	86.170	182.350	7238.26	4512.12	-4512.05	753.85	40°03'35.734"N	104°41'27.812"W	1.54	
13233.00	87.040	181.580	7243.88	4606.89	-4606.83	750.60	40°03'34.797"N	104°41'27.854"W	1.22	
13328.00	87.620	181.910	7248.31	4701.75	-4701.68	747.71	40°03'33.860"N	104°41'27.891"W	0.70	
13423.00	89.190	181.950	7250.95	4796.65	-4796.59	744.51	40°03'32.922"N	104°41'27.932"W	1.65	
13484.00	88.390	181.540	7252.24	4857.61	-4857.54	742.65	40°03'32.320"N	104°41'27.956"W	1.47	LAST BHI MWD+IFR SURVEYS
13537.00	88.390	181.540	7253.73	4910.57	-4910.50	741.23	40°03'31.796"N	104°41'27.974"W	0.00	PROJECTION TO BIT

HOLE & CASING SECTIONS - Ref Wellbore: GREEN 4N-8HZ AWB <13537> Ref Wellpath: GREEN 4N-8HZ AWP									
String/Diameter	Start MD [ft]	End MD [ft]	Interval [ft]	Start TVD [ft]	End TVD [ft]	Start N/S [ft]	Start E/W [ft]	End N/S [ft]	End E/W [ft]
13.5in Open Hole	16.00	1573.00	1557.00	16.00	1572.97	0.00	0.00	-1.27	-1.74
9.625in Casing Surface	16.00	1563.00	1547.00	16.00	1562.97	0.00	0.00	-1.29	-1.77
7.875in Open Hole	1573.00	13537.00	11964.00	1572.97	7253.73	-1.27	-1.74	-4910.50	741.23

TARGETS								
Name	TVD [ft]	North [ft]	East [ft]	Grid East [US ft]	Grid North [US ft]	Latitude	Longitude	Shape
SEC.05-T1N-R65W SECTION LINES	7137.00	723.20	1935.23	1728023.23	14553942.30	40°04'27.469"N	104°41'12.613"W	polygon
SEC.08-T1N-R65W SECTION LINES	7137.00	-2.12	-119.80	1725971.51	14553210.20	40°04'20.302"N	104°41'39.048"W	polygon
GREEN 4N-8HZ BHL ON PLAT REV-1 (1'FSL & 1680'FWL, SEC.08)	7242.00	-4936.84	759.13	1726867.07	14548280.48	40°03'31.536"N	104°41'27.744"W	point
GREEN 4N-8HZ LANDBOX	7242.00	-1.42	-89.87	1726001.43	14553211.01	40°04'20.309"N	104°41'38.663"W	polygon

WELLPATH COMPOSITION - Ref Wellbore: GREEN 4N-8HZ AWB <13537> Ref Wellpath: GREEN 4N-8HZ AWP									
Start MD [ft]	End MD [ft]	Positional Uncertainty Model			Log Name/Comment		Wellbore		
16.00	1523.00	Custom	APC	ISCWSA REV 2 MWD	CATHEDRAL MWD SURVEYS 13.5" <131-1523>		GREEN 4N-8HZ AWB <13537>		
1523.00	13484.00	Custom	APC	ISCWSA REV 2 MWD+IFR1+SC (approximation)	BHI MWD+IFR SURVEYS 7.875" <1576-13484>		GREEN 4N-8HZ AWB <13537>		
13484.00	13537.00	Blind Drilling	(std)		Projection to bit		GREEN 4N-8HZ AWB <13537>		

REFERENCE WELLPATH IDENTIFICATION			
Operator	KERR-MCGEE OIL & GAS ONSHORE LP (WA)	Slot	SLOT#14 GREEN 4N-8HZ (356'FNL & 988'FWL, SEC.08)
Area	COLORADO	Well	GREEN 4N-8HZ
Field	WELD COUNTY (UTM/TRUE NORTH)	Wellbore	GREEN 4N-8HZ AWB <13537>
Facility	SEC.08-T1N-R65W		

WELLPATH COMMENTS				
MD [ft]	Inclination [°]	Azimuth [°]	TVD [ft]	Comment
131.00	0.400	338.400	131.00	BEGIN MWD SURVEYS
1523.00	0.100	10.300	1522.97	TIE-ONTO MWD SURVEYS
1576.00	0.220	64.310	1575.97	BEGIN BHI MWD+IFR SURVEYS
7409.00	46.508	182.087	7026.59	SSPG
7452.00	49.420	181.030	7055.38	NBRR
7672.00	71.511	179.354	7163.40	N470_B_CK
7926.00	88.950	181.010	7205.34	LANDING POINT
13484.00	88.390	181.540	7252.24	LAST BHI MWD+IFR SURVEYS
13537.00	88.390	181.540	7253.73	PROJECTION TO BIT