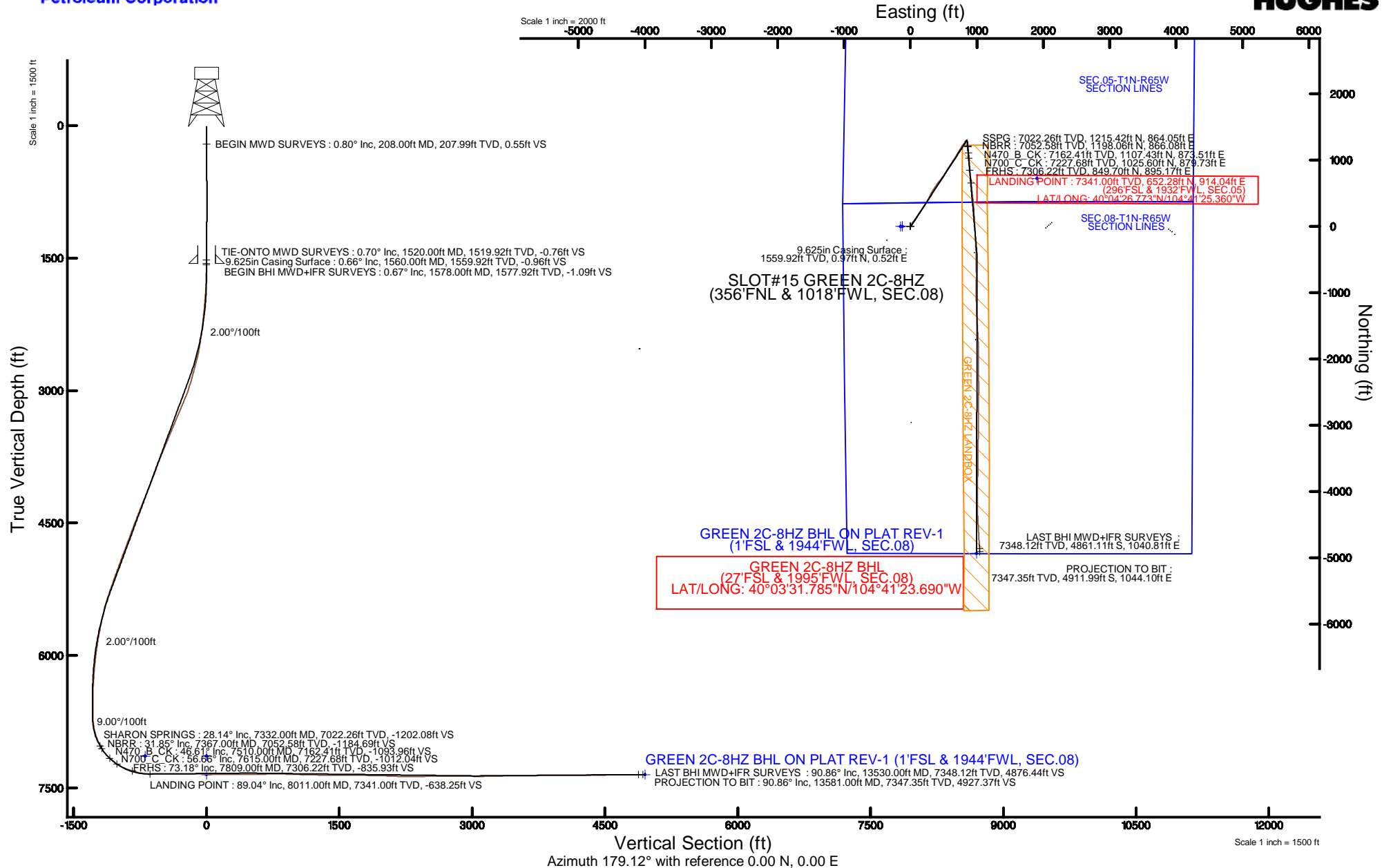


KERR-MCGEE OIL & GAS ONSHORE LP (WA)

Location: COLORADO Slot: SLOT#15 GREEN 2C-8HZ (356'FNL & 1018'FWL, SEC.08)
 Field: WELD COUNTY (UTM/TRUE NORTH) Well: GREEN 2C-8HZ
 Facility: SEC.08-T1N-R65W Wellbore: GREEN 2C-8HZ PWB

Plot reference wellpath is GREEN 2C-8HZ (REV-B.0) PWB

True vertical depths are referenced to XTREME 24 (16'KB) (RKB)	Grid System: NAD83 / UTM Zone 13 North, US feet
Measured depths are referenced to XTREME 24 (16'KB) (RKB)	North Reference: True north
XTREME 24 (16'KB) (RKB) to Mean Sea Level: 4987 feet	Scale: True distance
Mean Sea Level to Mud line (At Slot: SLOT#15 GREEN 2C-8HZ (356'FNL & 1018'FWL, SEC.08)): 0 feet	Depths are in feet
Coordinates are in feet referenced to Slot	Created by: amarcas on 02/Jun/2015



REFERENCE WELLPATH IDENTIFICATION			
Operator	KERR-MCGEE OIL & GAS ONSHORE LP (WA)	Slot	SLOT#15 GREEN 2C-8HZ (356'FNL & 1018'FWL, SEC.08)
Area	COLORADO	Well	GREEN 2C-8HZ
Field	WELD COUNTY (UTM/TRUE NORTH)	Wellbore	GREEN 2C-8HZ AWB <13581>
Facility	SEC.08-T1N-R65W		

REPORT SETUP INFORMATION			
Projection System	NAD83 / UTM Zone 13 North, US feet	Software System	WellArchitect® 4.0.0
North Reference	True	User	Amarcar
Scale	0.999608	Report Generated	02/Jun/2015 at 09:19
Convergence at slot	0.20° East	Database/Source file	KERR MCGEE UTM/_GREEN_2C-8HZ_AWB_13581_.xml

WELLPATH LOCATION						
	Local coordinates		Grid coordinates		Geographic coordinates	
	North[ft]	East[ft]	Easting[US ft]	Northing[US ft]	Latitude	Longitude
Slot Location	387.52	-3600.19	1726121.49	14553213.25	40°04'20.327"N	104°41'37.118"W
Facility Reference Pt			1729721.63	14552838.79	40°04'16.500"N	104°40'50.808"W
Field Reference Pt			1698235.31	14552047.82	40°04'09.600"N	104°47'36.000"W

WELLPATH DATUM			
Calculation method	Minimum curvature	XTREME 24 (16"KB) (RKB) to Facility Vertical Datum	4987.00ft
Horizontal Reference Pt	Slot	XTREME 24 (16"KB) (RKB) to Mean Sea Level	4987.00ft
Vertical Reference Pt	XTREME 24 (16"KB) (RKB)	XTREME 24 (16"KB) (RKB) to Mud Line at Slot (SLOT#15 GREEN 2C-8HZ (356'FNL & 1018'FWL, SEC.08))	4987.00ft
MD Reference Pt	XTREME 24 (16"KB) (RKB)	Section Origin	N 0.00, E 0.00 ft
Field Vertical Reference	Mean Sea Level	Section Azimuth	179.12°

Actual Wellpath Report

GREEN 2C-8HZ AWP

Page 2 of 7

REFERENCE WELLPATH IDENTIFICATION			
Operator	KERR-MCGEE OIL & GAS ONSHORE LP (WA)	Slot	SLOT#15 GREEN 2C-8HZ (356'FNL & 1018'FWL, SEC.08)
Area	COLORADO	Well	GREEN 2C-8HZ
Field	WELD COUNTY (UTM/TRUE NORTH)	Wellbore	GREEN 2C-8HZ AWB <13581>
Facility	SEC.08-T1N-R65W		

WELLPATH DATA (153 stations) † = interpolated/extrapolated station										
MD [ft]	Inclination [°]	Azimuth [°]	TVD [ft]	Vert Sect [ft]	North [ft]	East [ft]	Latitude	Longitude	DLS [°/100ft]	Comments
0.00†	0.000	245.100	0.00	0.00	0.00	0.00	40°04'20.327"N	104°41'37.118"W	0.00	
16.00	0.000	245.100	16.00	0.00	0.00	0.00	40°04'20.327"N	104°41'37.118"W	0.00	
208.00	0.800	245.100	207.99	0.55	-0.56	-1.22	40°04'20.321"N	104°41'37.134"W	0.42	BEGIN MWD SURVEYS
288.00	0.500	272.000	287.99	0.76	-0.79	-2.07	40°04'20.319"N	104°41'37.145"W	0.53	
368.00	0.100	235.400	367.99	0.78	-0.81	-2.48	40°04'20.319"N	104°41'37.150"W	0.53	
448.00	0.500	119.200	447.99	0.99	-1.02	-2.23	40°04'20.317"N	104°41'37.147"W	0.69	
528.00	0.600	165.000	527.98	1.57	-1.60	-1.82	40°04'20.311"N	104°41'37.141"W	0.55	
608.00	1.100	146.200	607.97	2.62	-2.64	-1.28	40°04'20.301"N	104°41'37.134"W	0.71	
688.00	1.000	150.000	687.96	3.88	-3.89	-0.51	40°04'20.289"N	104°41'37.125"W	0.15	
768.00	0.400	89.700	767.96	4.49	-4.49	0.12	40°04'20.283"N	104°41'37.116"W	1.09	
848.00	0.400	340.700	847.95	4.23	-4.22	0.31	40°04'20.285"N	104°41'37.114"W	0.81	
928.00	0.100	10.300	927.95	3.89	-3.89	0.23	40°04'20.289"N	104°41'37.115"W	0.40	
1008.00	0.300	352.900	1007.95	3.62	-3.61	0.22	40°04'20.291"N	104°41'37.115"W	0.26	
1088.00	0.600	321.000	1087.95	3.08	-3.08	-0.07	40°04'20.297"N	104°41'37.119"W	0.47	
1168.00	0.600	332.600	1167.95	2.38	-2.38	-0.53	40°04'20.303"N	104°41'37.125"W	0.15	
1248.00	1.100	334.200	1247.94	1.30	-1.32	-1.06	40°04'20.314"N	104°41'37.132"W	0.63	
1328.00	0.500	29.500	1327.93	0.31	-0.33	-1.22	40°04'20.324"N	104°41'37.134"W	1.14	
1408.00	0.500	34.300	1407.93	-0.28	0.27	-0.85	40°04'20.330"N	104°41'37.129"W	0.05	
1488.00	0.600	75.200	1487.92	-0.67	0.66	-0.25	40°04'20.334"N	104°41'37.121"W	0.49	
1520.00	0.700	73.500	1519.92	-0.76	0.76	0.10	40°04'20.335"N	104°41'37.117"W	0.32	TIE-ONTO MWD SURVEYS
1578.00	0.670	45.010	1577.92	-1.09	1.10	0.68	40°04'20.338"N	104°41'37.109"W	0.58	BEGIN BHI MWD+IFR SURVEYS
1673.00	0.810	29.760	1672.91	-2.05	2.08	1.41	40°04'20.348"N	104°41'37.100"W	0.25	
1768.00	1.920	21.140	1767.88	-4.11	4.14	2.31	40°04'20.368"N	104°41'37.088"W	1.18	
1863.00	4.290	35.350	1862.74	-8.45	8.53	4.94	40°04'20.411"N	104°41'37.054"W	2.60	
1958.00	5.590	22.190	1957.38	-15.57	15.71	8.75	40°04'20.482"N	104°41'37.005"W	1.81	
2052.00	6.490	29.270	2050.86	-24.38	24.58	13.07	40°04'20.570"N	104°41'36.950"W	1.24	
2147.00	6.230	36.800	2145.28	-33.10	33.39	18.79	40°04'20.657"N	104°41'36.876"W	0.92	
2242.00	7.770	32.570	2239.57	-42.54	42.93	25.33	40°04'20.751"N	104°41'36.792"W	1.71	
2336.00	9.130	34.730	2332.55	-53.91	54.42	33.00	40°04'20.865"N	104°41'36.693"W	1.49	
2431.00	10.550	34.210	2426.15	-67.15	67.81	42.19	40°04'20.997"N	104°41'36.575"W	1.50	
2526.00	12.270	34.510	2519.27	-82.50	83.32	52.80	40°04'21.150"N	104°41'36.439"W	1.81	
2621.00	16.130	37.000	2611.35	-101.16	102.18	66.46	40°04'21.337"N	104°41'36.263"W	4.11	
2715.00	17.180	35.430	2701.40	-122.65	123.92	82.37	40°04'21.552"N	104°41'36.058"W	1.22	
2810.00	18.230	34.480	2791.90	-146.08	147.61	98.92	40°04'21.786"N	104°41'35.846"W	1.15	
2905.00	20.410	35.810	2881.55	-171.48	173.29	117.02	40°04'22.039"N	104°41'35.613"W	2.34	
3000.00	21.950	36.760	2970.13	-198.83	200.95	137.34	40°04'22.313"N	104°41'35.351"W	1.66	
3095.00	26.180	35.110	3056.85	-229.86	232.33	160.03	40°04'22.623"N	104°41'35.059"W	4.51	
3189.00	26.240	31.760	3141.19	-264.14	266.97	182.90	40°04'22.965"N	104°41'34.765"W	1.58	
3284.00	27.120	31.040	3226.08	-300.21	303.38	205.12	40°04'23.325"N	104°41'34.480"W	0.99	
3379.00	26.740	31.810	3310.77	-336.58	340.09	227.55	40°04'23.688"N	104°41'34.191"W	0.54	
3474.00	25.390	31.130	3396.11	-371.84	375.69	249.34	40°04'24.040"N	104°41'33.911"W	1.46	
3569.00	25.490	27.430	3481.90	-407.11	411.27	269.29	40°04'24.391"N	104°41'33.654"W	1.68	
3664.00	26.140	27.490	3567.42	-443.52	447.98	288.37	40°04'24.754"N	104°41'33.409"W	0.68	
3759.00	25.080	26.140	3653.09	-479.88	484.62	306.90	40°04'25.116"N	104°41'33.170"W	1.27	
3854.00	23.720	29.970	3739.61	-514.22	519.25	325.32	40°04'25.458"N	104°41'32.933"W	2.20	

REFERENCE WELLPATH IDENTIFICATION			
Operator	KERR-MCGEE OIL & GAS ONSHORE LP (WA)	Slot	SLOT#15 GREEN 2C-8HZ (356°FNL & 1018°FWL, SEC.08)
Area	COLORADO	Well	GREEN 2C-8HZ
Field	WELD COUNTY (UTM/TRUE NORTH)	Wellbore	GREEN 2C-8HZ AWB <13581>
Facility	SEC.08-T1N-R65W		

WELLPATH DATA (153 stations) † = interpolated/extrapolated station										
MD [ft]	Inclination [°]	Azimuth [°]	TVD [ft]	Vert Sect [ft]	North [ft]	East [ft]	Latitude	Longitude	DLS [°/100ft]	Comments
3948.00	24.530	32.400	3825.40	-546.77	552.11	345.22	40°04'25.783"N	104°41'32.677"W	1.36	
4043.00	24.580	33.200	3911.81	-579.62	585.29	368.60	40°04'26.111"N	104°41'32.402"W	0.35	
4138.00	24.280	35.390	3998.30	-611.74	617.75	388.73	40°04'26.432"N	104°41'32.118"W	1.00	
4233.00	26.510	37.200	4084.12	-644.18	650.56	412.87	40°04'26.756"N	104°41'31.807"W	2.49	
4327.00	27.280	39.320	4167.95	-677.15	683.94	439.20	40°04'27.086"N	104°41'31.468"W	1.31	
4422.00	27.450	35.370	4252.33	-711.44	718.64	465.67	40°04'27.429"N	104°41'31.128"W	1.92	
4517.00	26.850	34.620	4336.86	-746.57	754.15	490.54	40°04'27.780"N	104°41'30.808"W	0.73	
4612.00	24.920	35.920	4422.33	-780.07	788.02	514.47	40°04'28.114"N	104°41'30.500"W	2.12	
4707.00	24.780	31.460	4508.54	-812.92	821.21	536.60	40°04'28.442"N	104°41'30.215"W	1.98	
4802.00	23.200	30.280	4595.33	-845.76	854.35	556.43	40°04'28.770"N	104°41'29.960"W	1.74	
4897.00	23.560	32.070	4682.53	-877.70	886.60	575.95	40°04'29.089"N	104°41'29.709"W	0.84	
4992.00	24.280	31.470	4769.37	-910.14	919.35	596.23	40°04'29.412"N	104°41'29.448"W	0.80	
5086.00	24.790	33.100	4854.89	-942.81	952.34	617.08	40°04'29.738"N	104°41'29.180"W	0.90	
5182.00	22.360	32.620	4942.87	-974.73	984.59	637.91	40°04'30.057"N	104°41'28.912"W	2.54	
5277.00	23.980	33.650	5030.20	-1005.71	1015.88	658.35	40°04'30.366"N	104°41'28.649"W	1.76	
5371.00	23.280	30.510	5116.32	-1037.30	1047.79	678.37	40°04'30.681"N	104°41'28.392"W	1.53	
5466.00	22.000	31.530	5204.00	-1068.35	1079.13	697.21	40°04'30.991"N	104°41'28.149"W	1.41	
5561.00	22.770	32.530	5291.84	-1098.72	1109.80	716.40	40°04'31.294"N	104°41'27.902"W	0.90	
5656.00	20.660	30.240	5380.10	-1128.42	1139.78	734.73	40°04'31.590"N	104°41'27.667"W	2.39	
5750.00	16.860	32.980	5469.09	-1153.95	1165.55	750.51	40°04'31.845"N	104°41'27.464"W	4.15	
5845.00	15.450	35.920	5560.34	-1175.53	1187.36	765.43	40°04'32.061"N	104°41'27.272"W	1.72	
5939.00	12.950	32.460	5651.46	-1194.36	1206.39	778.43	40°04'32.249"N	104°41'27.104"W	2.81	
6034.00	12.680	33.670	5744.09	-1211.84	1224.05	789.92	40°04'32.423"N	104°41'26.957"W	0.40	
6128.00	11.110	35.880	5836.07	-1227.59	1239.97	800.95	40°04'32.581"N	104°41'26.815"W	1.74	
6223.00	9.110	32.400	5929.59	-1241.21	1253.74	810.35	40°04'32.717"N	104°41'26.694"W	2.20	
6318.00	7.800	26.740	6023.56	-1253.21	1265.85	817.28	40°04'32.836"N	104°41'26.605"W	1.63	
6413.00	7.080	39.040	6117.77	-1263.42	1276.15	823.87	40°04'32.938"N	104°41'26.520"W	1.84	
6507.00	6.060	43.310	6211.15	-1271.42	1284.26	830.92	40°04'33.018"N	104°41'26.429"W	1.20	
6601.00	4.840	43.010	6304.72	-1277.84	1290.77	837.03	40°04'33.083"N	104°41'26.351"W	1.30	
6696.00	2.860	64.110	6399.51	-1281.73	1294.74	841.89	40°04'33.122"N	104°41'26.288"W	2.53	
6791.00	1.270	82.030	6494.44	-1282.86	1295.92	845.07	40°04'33.133"N	104°41'26.247"W	1.79	
6885.00	1.820	72.320	6588.41	-1283.42	1296.52	847.52	40°04'33.139"N	104°41'26.216"W	0.65	
6981.00	1.660	73.900	6684.36	-1284.23	1297.37	850.31	40°04'33.148"N	104°41'26.180"W	0.17	
7075.00	8.950	169.560	6777.98	-1277.36	1290.54	852.95	40°04'33.080"N	104°41'26.146"W	9.85	
7170.00	14.410	165.440	6870.97	-1258.57	1271.81	857.26	40°04'32.895"N	104°41'26.090"W	5.81	
7265.00	21.170	175.950	6961.40	-1229.92	1243.22	861.45	40°04'32.613"N	104°41'26.036"W	7.85	
7332.00†	28.136	173.698	7022.26	-1202.08	1215.42	864.05	40°04'32.338"N	104°41'26.003"W	10.49	SHARON SPRINGS
7359.00	30.950	173.060	7045.75	-1188.83	1202.19	865.58	40°04'32.207"N	104°41'25.983"W	10.49	
7367.00†	31.846	173.367	7052.58	-1184.69	1198.06	866.08	40°04'32.166"N	104°41'25.977"W	11.37	NBRR
7454.00	41.620	175.940	7122.22	-1132.87	1146.31	870.78	40°04'31.655"N	104°41'25.916"W	11.37	
7510.00†	46.613	176.021	7162.41	-1093.96	1107.43	873.51	40°04'31.271"N	104°41'25.881"W	8.92	N470_B_CK
7549.00	50.090	176.070	7188.32	-1064.87	1078.37	875.52	40°04'30.983"N	104°41'25.855"W	8.92	
7615.00†	56.660	174.870	7227.68	-1012.04	1025.60	879.73	40°04'30.462"N	104°41'25.801"W	10.06	N700_C_CK
7644.00	59.550	174.400	7243.00	-987.50	1001.08	882.03	40°04'30.220"N	104°41'25.772"W	10.06	
7739.00	69.490	175.100	7283.82	-902.09	915.79	889.85	40°04'29.377"N	104°41'25.671"W	10.48	

REFERENCE WELLPATH IDENTIFICATION

Operator	KERR-MCGEE OIL & GAS ONSHORE LP (WA)	Slot	SLOT#15 GREEN 2C-8HZ (356°FNL & 1018°FWL, SEC.08)
Area	COLORADO	Well	GREEN 2C-8HZ
Field	WELD COUNTY (UTM/TRUE NORTH)	Wellbore	GREEN 2C-8HZ AWB <13581>
Facility	SEC.08-T1N-R65W		

WELLPATH DATA (153 stations) † = interpolated/extrapolated station

MD [ft]	Inclination [°]	Azimuth [°]	TVD [ft]	Vert Sect [ft]	North [ft]	East [ft]	Latitude	Longitude	DLS [°/100ft]	Comments
7809.00†	73.176	175.692	7306.22	-835.93	849.70	895.17	40°04'28.724"N	104°41'25.603"W	5.33	FRHS
7833.00	74.440	175.890	7312.91	-812.92	826.71	896.86	40°04'28.497"N	104°41'25.581"W	5.33	
7928.00	80.550	173.570	7333.47	-720.50	734.41	905.39	40°04'27.584"N	104°41'25.471"W	6.86	
8011.00	89.040	174.410	7341.00	-638.25	652.28	914.04	40°04'26.773"N	104°41'25.360"W	10.28	LANDING POINT
8118.00	91.080	173.920	7340.88	-531.65	545.84	924.91	40°04'25.721"N	104°41'25.220"W	1.96	
8213.00	91.010	173.650	7339.15	-437.08	451.42	935.20	40°04'24.788"N	104°41'25.088"W	0.29	
8308.00	88.890	173.120	7339.23	-342.56	357.06	946.14	40°04'23.855"N	104°41'24.947"W	2.30	
8403.00	90.640	177.010	7339.62	-247.82	262.43	954.31	40°04'22.920"N	104°41'24.842"W	4.49	
8498.00	89.380	177.410	7339.61	-152.88	167.55	958.93	40°04'21.983"N	104°41'24.783"W	1.39	
8593.00	88.640	176.370	7341.25	-57.97	72.70	964.09	40°04'21.045"N	104°41'24.717"W	1.34	
8688.00	88.240	176.530	7343.84	36.89	-22.08	969.97	40°04'20.109"N	104°41'24.641"W	0.45	
8782.00	90.030	177.320	7345.25	130.81	-115.93	975.01	40°04'19.181"N	104°41'24.576"W	2.08	
8877.00	90.060	177.680	7345.18	225.77	-210.84	979.15	40°04'18.243"N	104°41'24.523"W	0.38	
8972.00	90.340	177.280	7344.85	320.73	-305.75	983.33	40°04'17.305"N	104°41'24.469"W	0.51	
9067.00	90.550	177.260	7344.11	415.68	-400.64	987.85	40°04'16.368"N	104°41'24.411"W	0.22	
9162.00	90.280	179.310	7343.42	510.66	-495.59	990.70	40°04'15.429"N	104°41'24.375"W	2.18	
9257.00	90.520	179.620	7342.76	605.66	-590.58	991.58	40°04'14.491"N	104°41'24.363"W	0.41	
9352.00	91.140	179.340	7341.38	700.64	-685.56	992.45	40°04'13.552"N	104°41'24.352"W	0.72	
9446.00	90.150	180.330	7340.32	794.63	-779.56	992.72	40°04'12.623"N	104°41'24.349"W	1.49	
9541.00	88.490	180.590	7341.45	889.59	-874.54	991.95	40°04'11.684"N	104°41'24.359"W	1.77	
9635.00	87.810	179.900	7344.49	983.52	-968.49	991.55	40°04'10.756"N	104°41'24.364"W	1.03	
9730.00	88.370	179.800	7347.65	1078.46	-1063.44	991.80	40°04'09.818"N	104°41'24.361"W	0.60	
9825.00	88.270	178.980	7350.44	1173.42	-1158.39	992.81	40°04'08.879"N	104°41'24.348"W	0.87	
9919.00	89.910	178.920	7351.93	1267.41	-1252.36	994.53	40°04'07.951"N	104°41'24.326"W	1.75	
10014.00	88.210	176.400	7353.49	1362.35	-1347.26	998.41	40°04'07.013"N	104°41'24.276"W	3.20	
10109.00	88.860	176.670	7355.92	1457.22	-1442.05	1004.15	40°04'06.076"N	104°41'24.202"W	0.74	
10203.00	90.330	177.490	7356.58	1551.16	-1535.92	1008.94	40°04'05.148"N	104°41'24.141"W	1.79	
10298.00	91.230	176.460	7355.29	1646.08	-1630.78	1013.95	40°04'04.211"N	104°41'24.076"W	1.44	
10392.00	88.760	177.800	7355.30	1740.01	-1724.65	1018.66	40°04'03.283"N	104°41'24.016"W	2.99	
10488.00	88.820	180.000	7357.33	1835.98	-1820.61	1020.50	40°04'02.335"N	104°41'23.992"W	2.29	
10582.00	88.860	180.350	7359.23	1929.95	-1914.59	1020.21	40°04'01.406"N	104°41'23.996"W	0.37	
10677.00	88.110	180.030	7361.74	2024.90	-2009.55	1019.90	40°04'00.468"N	104°41'24.000"W	0.86	
10772.00	87.500	178.900	7365.38	2119.83	-2104.48	1020.78	40°03'59.530"N	104°41'23.989"W	1.35	
10867.00	88.610	178.650	7368.60	2214.77	-2199.40	1022.81	40°03'58.592"N	104°41'23.962"W	1.20	
10962.00	90.950	178.690	7368.97	2309.76	-2294.37	1025.02	40°03'57.653"N	104°41'23.934"W	2.46	
11057.00	90.490	179.480	7367.77	2404.75	-2389.35	1026.54	40°03'56.715"N	104°41'23.915"W	0.96	
11152.00	91.480	180.680	7366.14	2499.72	-2484.33	1026.40	40°03'55.776"N	104°41'23.916"W	1.64	
11246.00	91.230	180.510	7363.92	2593.66	-2578.30	1025.43	40°03'54.848"N	104°41'23.929"W	0.32	
11341.00	89.780	181.090	7363.08	2688.61	-2673.28	1024.10	40°03'53.909"N	104°41'23.946"W	1.64	
11436.00	89.720	180.880	7363.50	2783.56	-2768.27	1022.47	40°03'52.970"N	104°41'23.967"W	0.23	
11531.00	89.190	180.760	7364.40	2878.52	-2863.25	1021.11	40°03'52.032"N	104°41'23.985"W	0.57	
11626.00	88.700	179.860	7366.15	2973.48	-2958.23	1020.59	40°03'51.093"N	104°41'23.991"W	1.08	
11720.00	89.910	180.270	7367.29	3067.46	-3052.23	1020.49	40°03'50.164"N	104°41'23.993"W	1.36	
11815.00	91.140	180.530	7366.42	3162.43	-3147.22	1019.82	40°03'49.225"N	104°41'24.001"W	1.32	
11910.00	91.420	180.470	7364.30	3257.38	-3242.19	1019.00	40°03'48.287"N	104°41'24.012"W	0.30	

REFERENCE WELLPATH IDENTIFICATION

Operator	KERR-MCGEE OIL & GAS ONSHORE LP (WA)	Slot	SLOT#15 GREEN 2C-8HZ (356°FNL & 1018°FNL, SEC.08)
Area	COLORADO	Well	GREEN 2C-8HZ
Field	WELD COUNTY (UTM/TRUE NORTH)	Wellbore	GREEN 2C-8HZ AWP <13581>
Facility	SEC.08-T1N-R65W		

WELLPATH DATA (153 stations)

MD [ft]	Inclination [°]	Azimuth [°]	TVD [ft]	Vert Sect [ft]	North [ft]	East [ft]	Latitude	Longitude	DLS [°/100ft]	Comments
12004.00	91.750	180.770	7361.70	3351.31	-3336.15	1017.98	40°03'47.358"N	104°41'24.025"W	0.47	
12099.00	90.310	181.140	7359.99	3446.24	-3431.12	1016.40	40°03'46.420"N	104°41'24.046"W	1.57	
12194.00	90.210	180.740	7359.56	3541.19	-3526.10	1014.84	40°03'45.481"N	104°41'24.066"W	0.43	
12288.00	90.680	180.640	7358.83	3635.15	-3620.09	1013.71	40°03'44.552"N	104°41'24.080"W	0.51	
12383.00	91.080	180.350	7357.37	3730.12	-3715.08	1012.88	40°03'43.614"N	104°41'24.091"W	0.52	
12478.00	91.320	180.140	7355.38	3825.08	-3810.06	1012.48	40°03'42.675"N	104°41'24.096"W	0.34	
12573.00	89.940	180.720	7354.33	3920.04	-3905.05	1011.77	40°03'41.736"N	104°41'24.105"W	1.58	
12668.00	90.060	180.920	7354.33	4015.00	-4000.04	1010.41	40°03'40.798"N	104°41'24.123"W	0.25	
12763.00	90.680	180.690	7353.72	4109.96	-4095.02	1009.07	40°03'39.859"N	104°41'24.140"W	0.70	
12857.00	90.770	179.990	7352.53	4203.93	-4189.01	1008.51	40°03'38.930"N	104°41'24.147"W	0.75	
12952.00	90.150	178.810	7351.77	4298.92	-4284.00	1009.51	40°03'37.991"N	104°41'24.135"W	1.40	
13046.00	89.540	177.130	7352.02	4392.90	-4377.94	1012.84	40°03'37.063"N	104°41'24.092"W	1.90	
13141.00	90.430	176.820	7352.05	4487.83	-4472.81	1017.85	40°03'36.126"N	104°41'24.027"W	0.99	
13235.00	90.400	176.890	7351.37	4581.76	-4566.66	1023.01	40°03'35.198"N	104°41'23.961"W	0.08	
13330.00	90.580	176.550	7350.55	4676.67	-4661.50	1028.44	40°03'34.261"N	104°41'23.891"W	0.40	
13425.00	90.670	176.490	7349.52	4771.56	-4756.32	1034.21	40°03'33.324"N	104°41'23.817"W	0.11	
13530.00	90.860	176.300	7348.12	4876.44	-4861.11	1040.81	40°03'32.288"N	104°41'23.732"W	0.26	LAST BHI MWD+IFR SURVEYS
13581.00	90.860	176.300	7347.35	4927.37	-4911.99	1044.10	40°03'31.785"N	104°41'23.690"W	0.00	PROJECTION TO BIT

HOLE & CASING SECTIONS - Ref Wellbore: GREEN 2C-8HZ AWP <13581>

Ref Wellpath: GREEN 2C-8HZ AWP

String/Diameter	Start MD [ft]	End MD [ft]	Interval [ft]	Start TVD [ft]	End TVD [ft]	Start N/S [ft]	Start E/W [ft]	End N/S [ft]	End E/W [ft]
13.5in Open Hole	16.00	1570.00	1554.00	16.00	1569.92	0.00	0.00	1.04	0.61
9.625in Casing Surface	16.00	1560.00	1544.00	16.00	1559.92	0.00	0.00	0.97	0.52
7.875in Open Hole	1570.00	13581.00	12011.00	1569.92	7347.35	1.04	0.61	-4911.99	1044.10

TARGETS

Name	TVD [ft]	North [ft]	East [ft]	Grid East [US ft]	Grid North [US ft]	Latitude	Longitude	Shape
SEC.05-T1N-R65W SECTION LINES	7137.00	722.79	1904.99	1728023.23	14553942.30	40°04'27.469"N	104°41'12.613"W	polygon
SEC.08-T1N-R65W SECTION LINES	7137.00	-2.53	-150.04	1725971.51	14553210.20	40°04'20.302"N	104°41'39.048"W	polygon
GREEN 2C-8HZ BHL ON PLAT REV-1 (1°FSL & 1944°FNL, SEC.08)	7347.00	-4937.64	992.87	1727130.95	14548281.00	40°03'31.532"N	104°41'24.349"W	point
GREEN 2C-8HZ LANDBOX	7347.00	-1.82	-120.11	1726001.43	14553211.01	40°04'20.309"N	104°41'38.663"W	polygon



Actual Wellpath Report

GREEN 2C-8HZ AWP
Page 6 of 7



REFERENCE WELLPATH IDENTIFICATION			
Operator	KERR-MCGEE OIL & GAS ONSHORE LP (WA)	Slot	SLOT#15 GREEN 2C-8HZ (356'FNL & 1018'FWL, SEC.08)
Area	COLORADO	Well	GREEN 2C-8HZ
Field	WELD COUNTY (UTM/TRUE NORTH)	Wellbore	GREEN 2C-8HZ AWB <13581>
Facility	SEC.08-T1N-R65W		

WELLPATH COMPOSITION - Ref Wellbore: GREEN 2C-8HZ AWB <13581>					Ref Wellpath: GREEN 2C-8HZ AWP	
Start MD [ft]	End MD [ft]	Positional Uncertainty Model			Log Name/Comment	Wellbore
16.00	1520.00	Custom APC	ISCWSA REV 2 MWD		CATHEDRAL MWD SURVEYS 13.5" <208-1520>	GREEN 2C-8HZ AWB <13581>
1520.00	13530.00	Custom APC	ISCWSA REV 2 MWD+IFR1+SC (approximation)		BHI MWD+IFR SURVEYS 7.875" <1578-13530>	GREEN 2C-8HZ AWB <13581>
13530.00	13581.00	Blind Drilling (std)			Projection to bit	GREEN 2C-8HZ AWB <13581>

REFERENCE WELLPATH IDENTIFICATION			
Operator	KERR-MCGEE OIL & GAS ONSHORE LP (WA)	Slot	SLOT#15 GREEN 2C-8HZ (356'FNL & 1018'FWL, SEC.08)
Area	COLORADO	Well	GREEN 2C-8HZ
Field	WELD COUNTY (UTM/TRUE NORTH)	Wellbore	GREEN 2C-8HZ AWB <13581>
Facility	SEC.08-T1N-R65W		

WELLPATH COMMENTS				
MD [ft]	Inclination [°]	Azimuth [°]	TVD [ft]	Comment
208.00	0.800	245.100	207.99	BEGIN MWD SURVEYS
1520.00	0.700	73.500	1519.92	TIE-ONTO MWD SURVEYS
1578.00	0.670	45.010	1577.92	BEGIN BHI MWD+IFR SURVEYS
7332.00	28.136	173.698	7022.26	SHARON SPRINGS
7367.00	31.846	173.367	7052.58	NBRR
7510.00	46.613	176.021	7162.41	N470_B_CK
7615.00	56.660	174.870	7227.68	N700_C_CK
7809.00	73.176	175.692	7306.22	FRHS
8011.00	89.040	174.410	7341.00	LANDING POINT
13530.00	90.860	176.300	7348.12	LAST BHI MWD+IFR SURVEYS
13581.00	90.860	176.300	7347.35	PROJECTION TO BIT