



Natural Formation Evaluation
Gamma Ray

Realtime Log

Scale:

1:240

Measured Depth

Company: Anadarko Petroleum Corporation

Well: Green 2C-8HZ

Field: Weld County

Region: Continental US Country: United States

Surface Location:

Latitude: 40° 4' 20.327" N

Longitude: 104° 41' 37.118" W

Other Services:

Status: Final Print

API Number: 051234083400

Section 8

TWN: 1S

Range 65W

Directional
VSS

Ground Level

Elevation: 4971.00 ft.

Elevations: N/A

Rig Floor

16.00 ft.

Above P.D.

KB:

DF:

GL:

4987.00 ft.

Driller's Depth

GL:

4971.00 ft.

Interval Logged

Dates

Magnetic Field Reference

Top: 1570 ft.

Date From: 02/May/15

Dip Angle: 66.57°

Azi Reference North: True

Bottom: 13533 ft.

Date To: 06/May/15

Total

Mag to Reference

Spud Date: 02/May/15

Field Strength: 52703.0 nT

North Correction: 8.10°

Borehole Record

Casing Record

Hole Size

From

To

Size

Weight

From

To

7.875 in.

1560 ft.

13582 ft.

9.625 in.

36.00 lb/ft

0 ft.

1560 ft.

Mud Record

Deviation Record

Type

From

To

Hole Size

Interval

Inc / Azi (Start)

Inc / Azi (End)

Diesel Base Mud

1741 ft.

13581 ft.

7.875 in.

12021 ft.

0.7° / 54.0°

90.9° / 176.3°

Acquisition System

Software Version

Other

Advantage

2.20U4

Rig / Contractor: Xtreme 24

/ Xtreme Drilling

PLATS

6.4.1.34

Job No: 7217239

District / Unit: RMD

/ D&E

INTEQ does not guarantee the accuracy or correctness of interpretations provided in or from this log. Since all interpretations are opinions based on measurements, INTEQ shall under no circumstances be responsible for consequential damages or any other loss, costs, damages or expenses incurred or sustained in connection with the use of any such interpretations. INTEQ disclaims all expressed and implied warranties related to this service. INTEQ's liabilities and obligations shall be governed by INTEQ's Standard Terms and Conditions.

Log Run Summary

LWD Run No.	BHA Run No.	Bit Run No.	Bit Size (in.)	Bit Type	Bit Gauge Length (in.)	Assembly Type	Logged Interval		Bit Depth Interval		Date / Time		Circ. Time (hrs.)
							Top (ft.)	Bottom (ft.)	From (ft.)	To (ft.)	Start	End	
1	1	1	7.875	PDC	3.000	Steer Bent Sub	1570	13533	1570	13581	02/May/2015 09:00	06/May/2015 05:00	68

Crew

Name	Arrive	Depart	Name	Arrive	Depart	Name	Arrive	Depart
	Wellsite	Wellsite		Wellsite	Wellsite		Wellsite	Wellsite
Matt Leopold	02/May/2015	06/May/2015	Andrew Overbey	02/May/2015	06/May/2015			

Mud Properties Record

Date / Time	LWD	Measured	Mud	Density	Viscosity	pH	Fluid	Oil /	Source	Total	K+
-------------	-----	----------	-----	---------	-----------	----	-------	-------	--------	-------	----

		Run No.	Depth (ft.)	Type	(ppg)	(sec/qt)		Loss (mL/30)	Water		Chlorides (mg/L)	(%)
02/May/2015	18:00	1	1741	Diesel Base Mud	9.2	62	N/A	N/A	61 / 30	Active Mud Pit	68000	0.0
03/May/2015	18:00	1	7478	Diesel Base Mud	9.3	63	N/A	N/A	64 / 26	Active Mud Pit	82000	0.0
04/May/2015	18:00	1	10014	Diesel Base Mud	9.4	61	N/A	N/A	63 / 27	Active Mud Pit	72000	0.0

Mnemonics

Curve	Description	Units
GRAX	Gamma Ray Apparent, 0.5 ft. Avg.	API
GRTX	Gamma Ray Time Since Drilled	Min.
GRIX	Gamma Ray Data Density	Unitless
GRSI	Gamma Ray Slide Indicator	Unitless
ROPA	Rate of Penetration, 3.0 ft. Avg.	Ft./Hr.
TCDX	Downhole Temperature	Deg. F.
TVD	True Vertical Depth	Ft.
WOBA	Surface Weight on Bit, 1.0 ft. Avg.	K. lbs.

Equipment and Service Data

LWD Run No.	Tool	Serial Number	Measurement	Bit Offset (ft.)	Max O.D. (in.)	Min I.D. (in.)
1	DIR	11700519	Directional	50.62	6.750	3.125
1	SRIG	10266573	Gamma	47.25	6.750	3.125

Service and Tool Mnemonics

Mnemonic	Name	Description
DIR	Directional	Wellbore directional survey
SRIG	Inclination and Gamma	Probe based gamma ray and inclination module

Comments

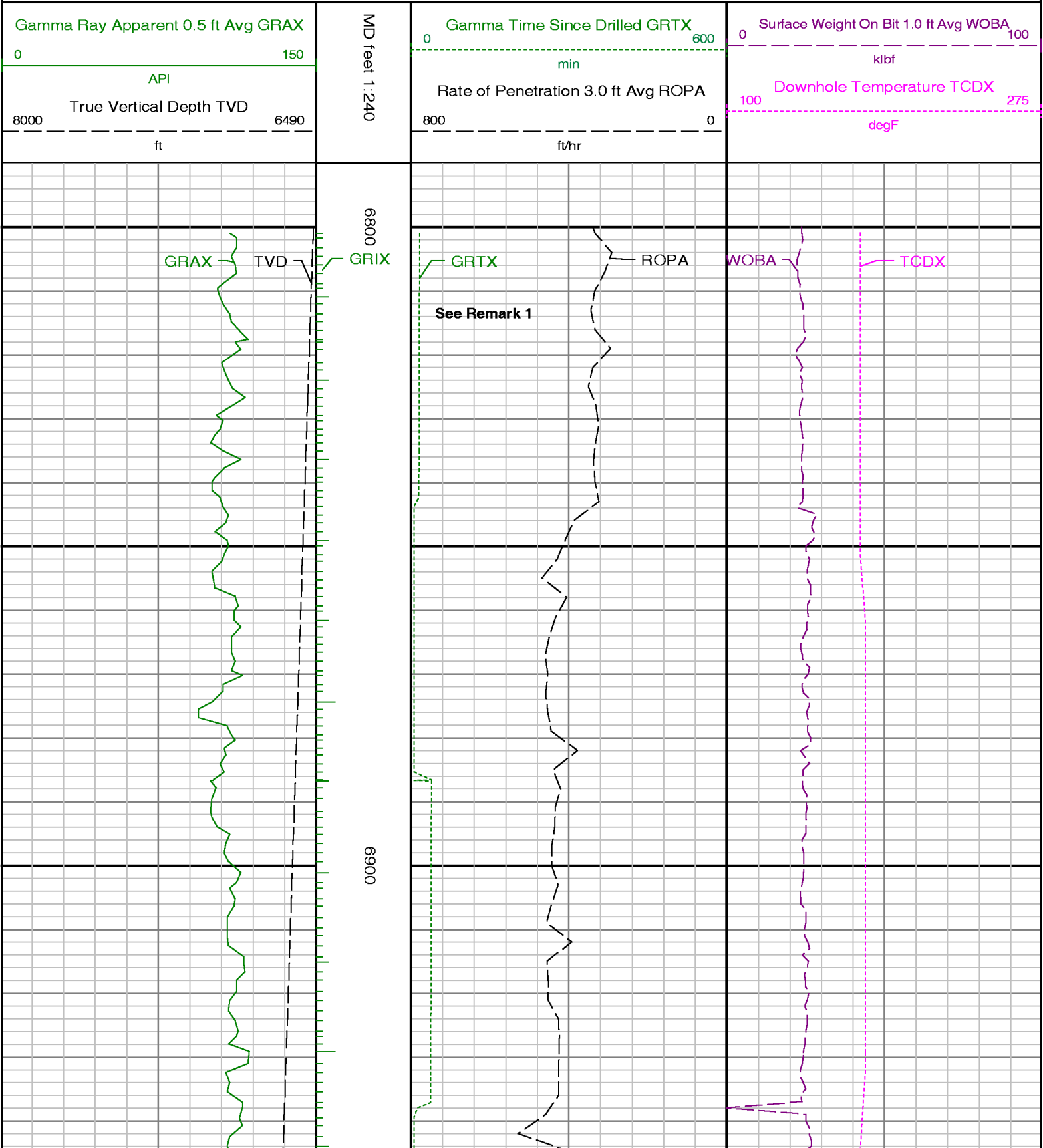
- 1) Baker Hughes INTEQ run 1 utilized a 6 1/2 inch NaviGamma (Directional and Gamma Ray) tool ran behind an 7 7/8 inch bit with a steerable assembly from 1570 feet to 13581 feet MD (1570 feet to 7347 feet TVD).
- 2) Depth measurements obtained from a depth control system not supplied or operated by Baker Hughes INTEQ. Due to lack of control by Baker Hughes INTEQ logging engineers, depth calibration and measurements could not be independently verified.
- 3) A sliding indicator is shown on the left side of track 1 as a heavy line. The indicator has been shifted to the Gamma Ray sensor offset to correspond with Gamma Ray data acquired while sliding.

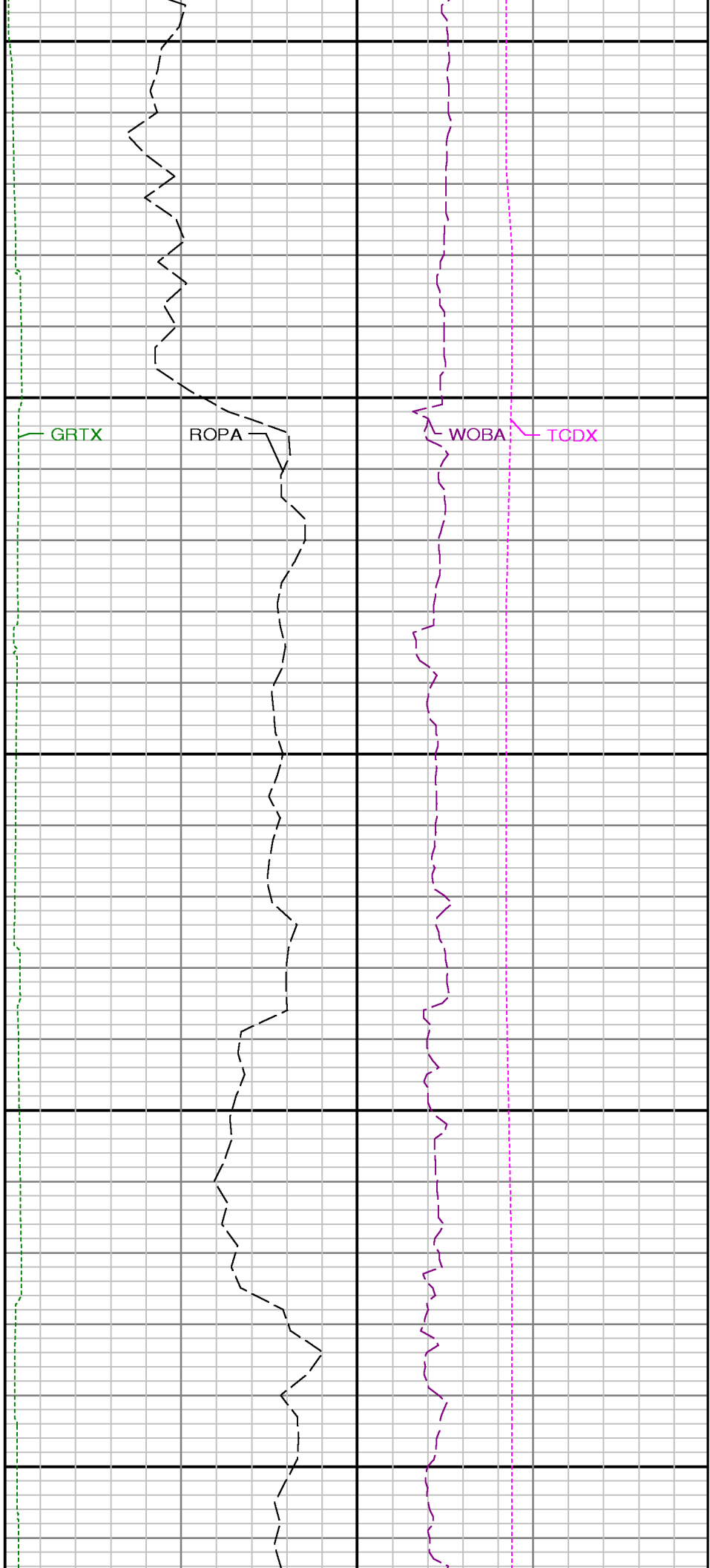
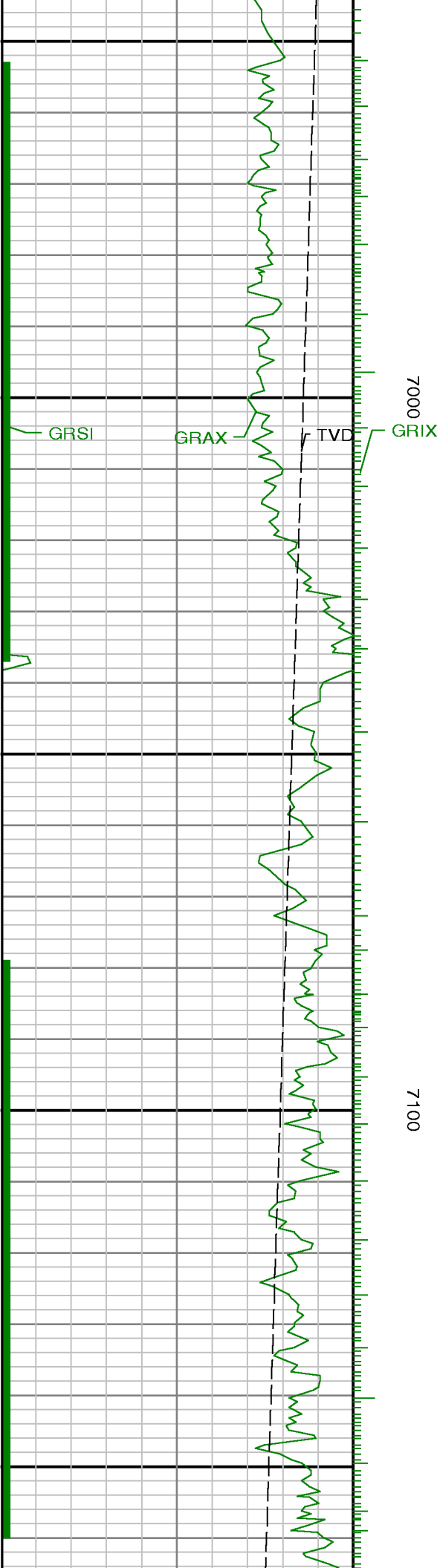
Remarks

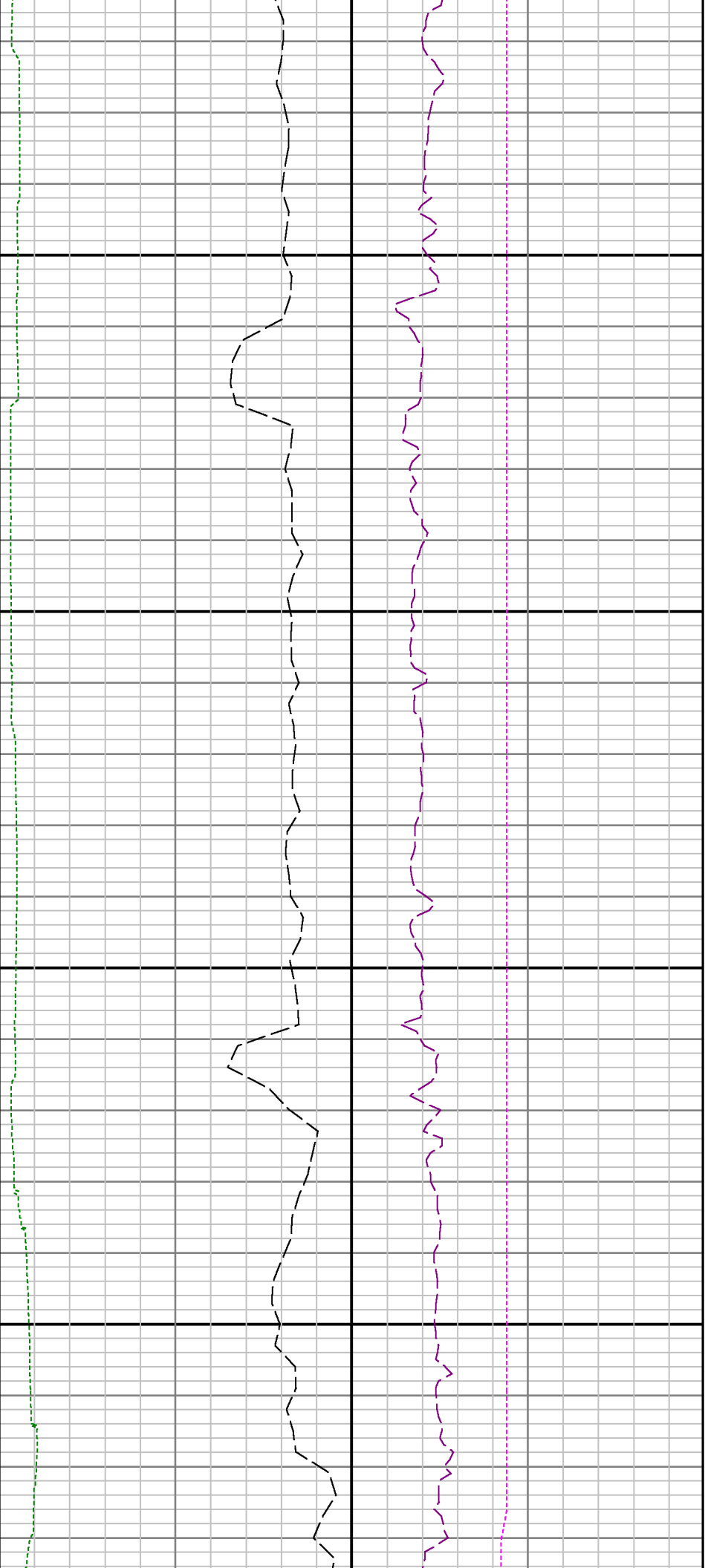
Number	Measured Depth (ft.)	Hole Section (in.)	LWD Run No.	Remark
1	6800	7.875	1	The interval from surface to 6800 feet MD (6503 feet TVD) was not logged since logging services began at 6800 feet MD.



Company : Anadarko Petroleum Corporation
Well : Green 2C-8HZ
Interval : 6790.00 - 13581.00 feet
Created : 05/May/2015 3:35:12 PM

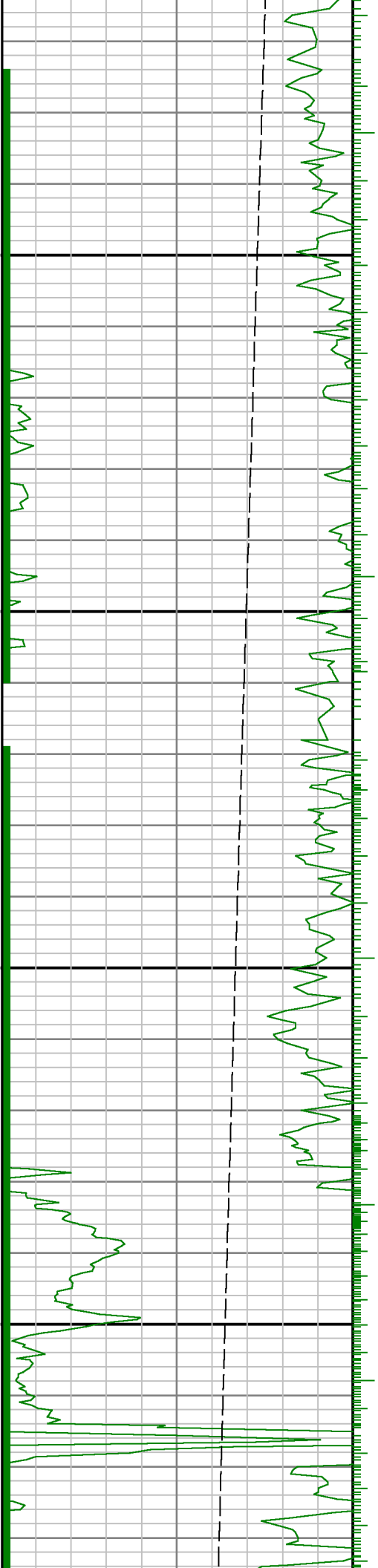


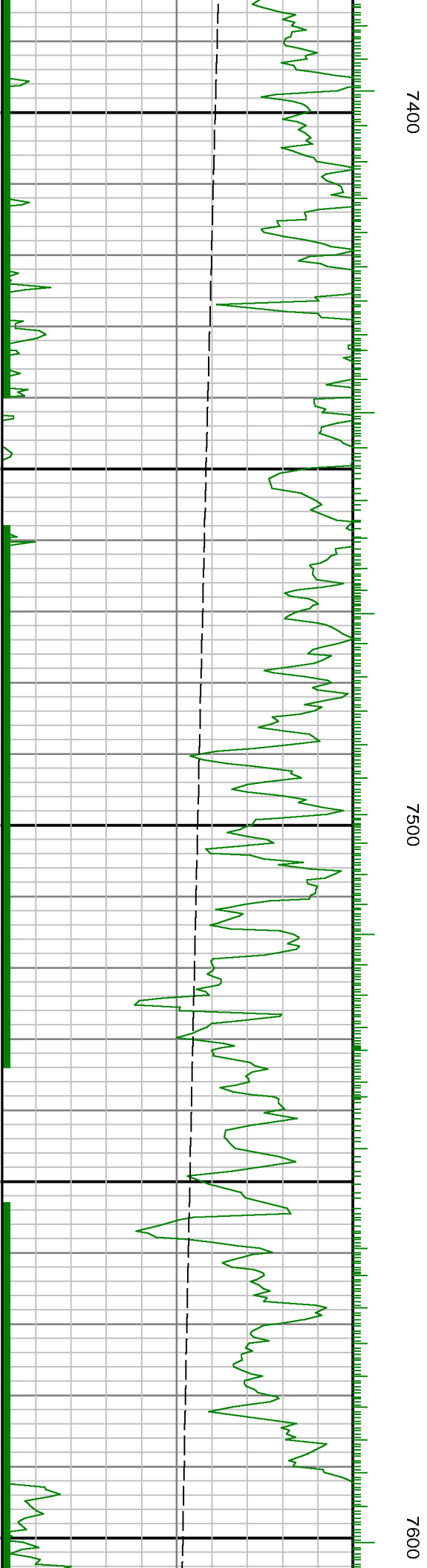


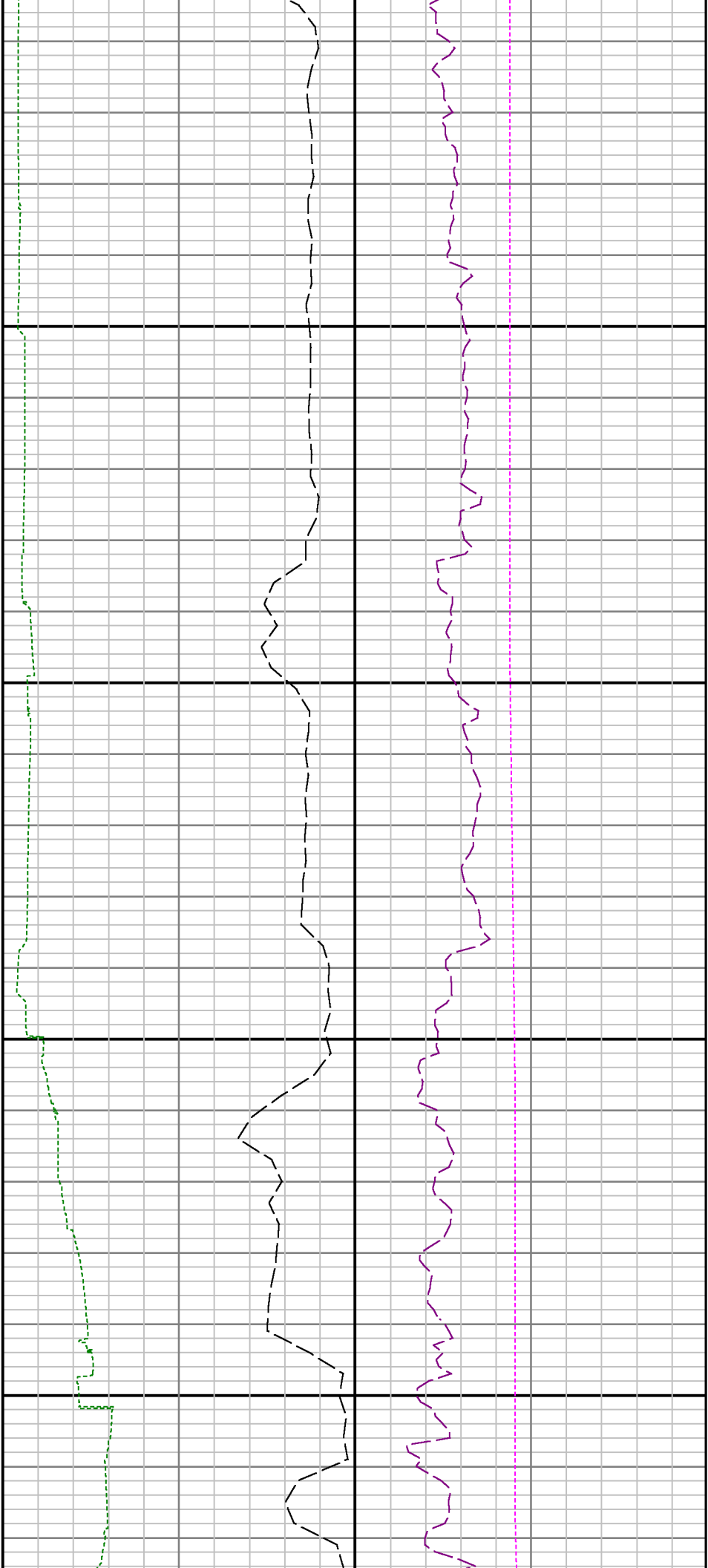


7200

7300

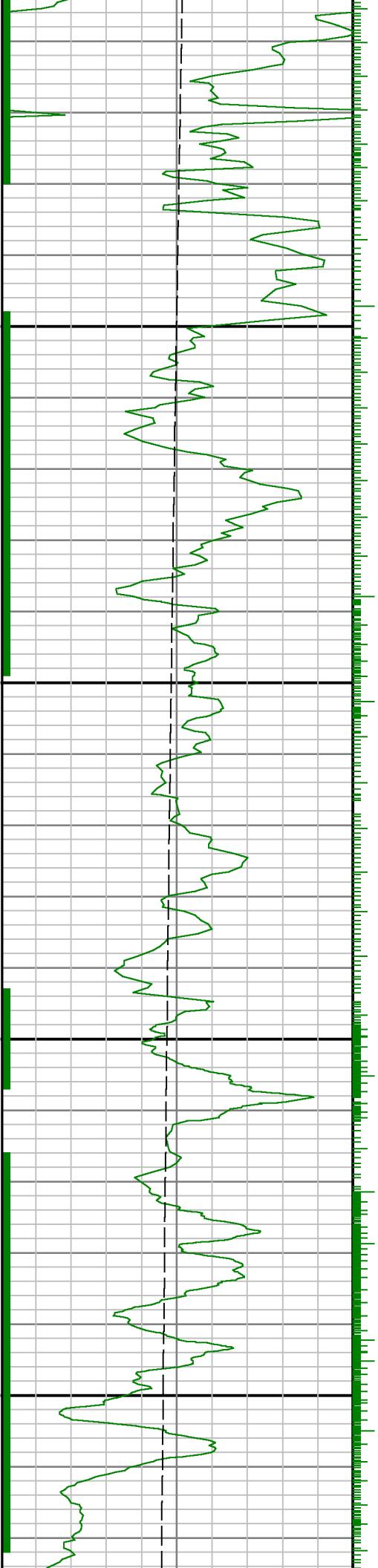


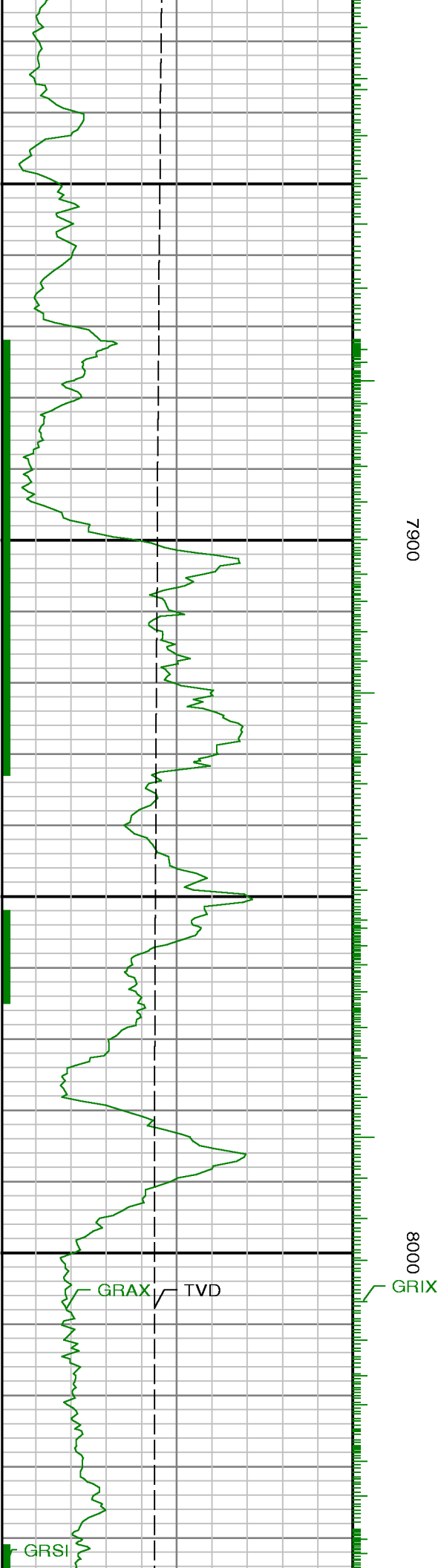


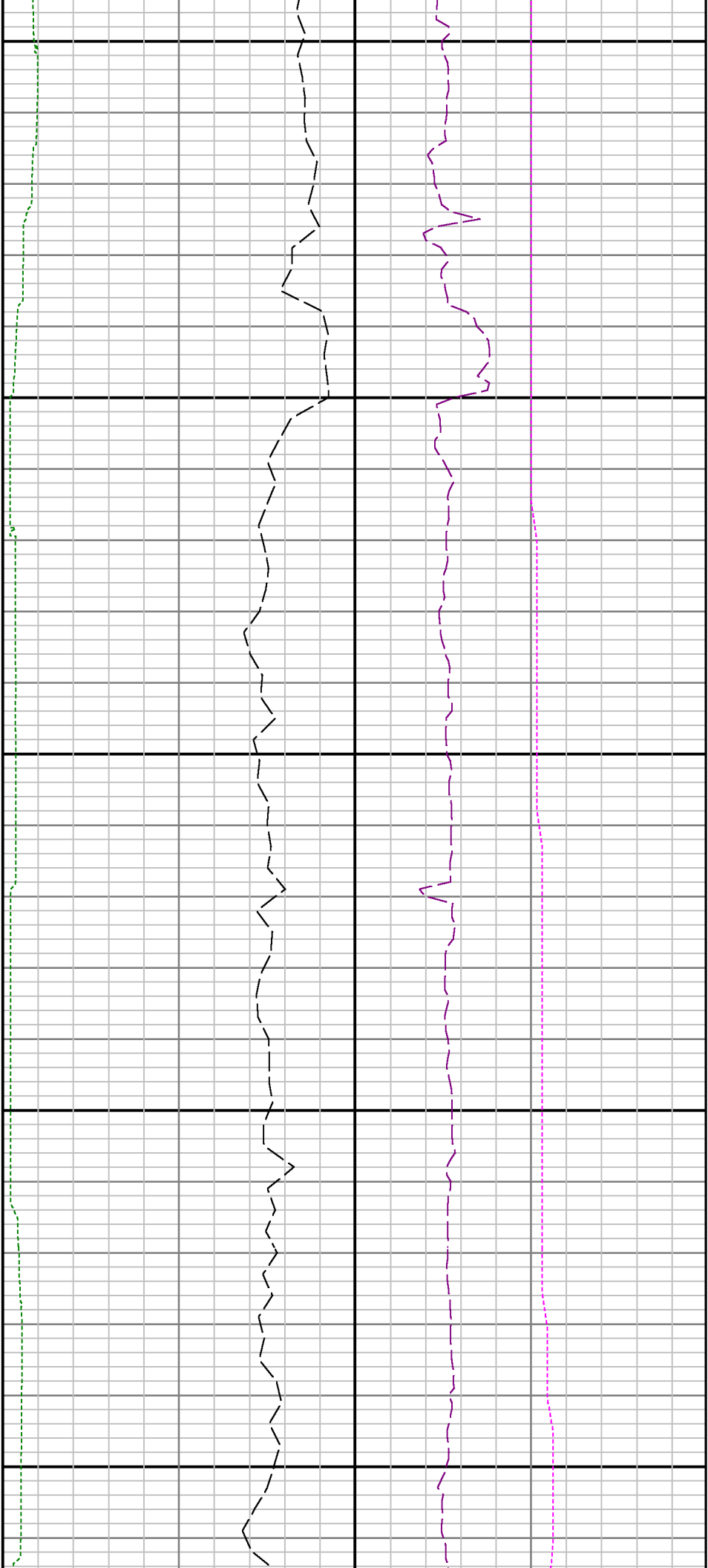


7700

7800

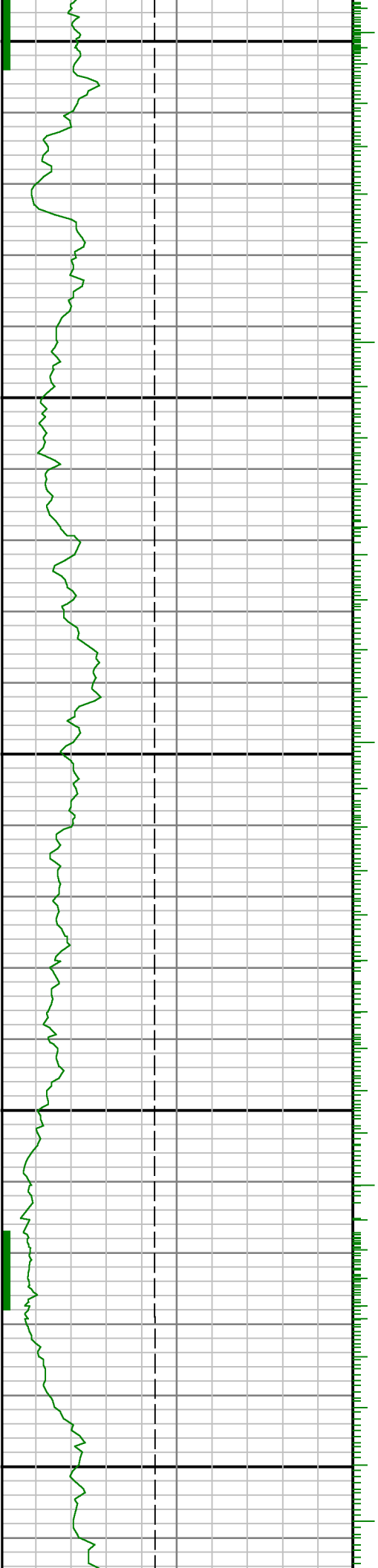


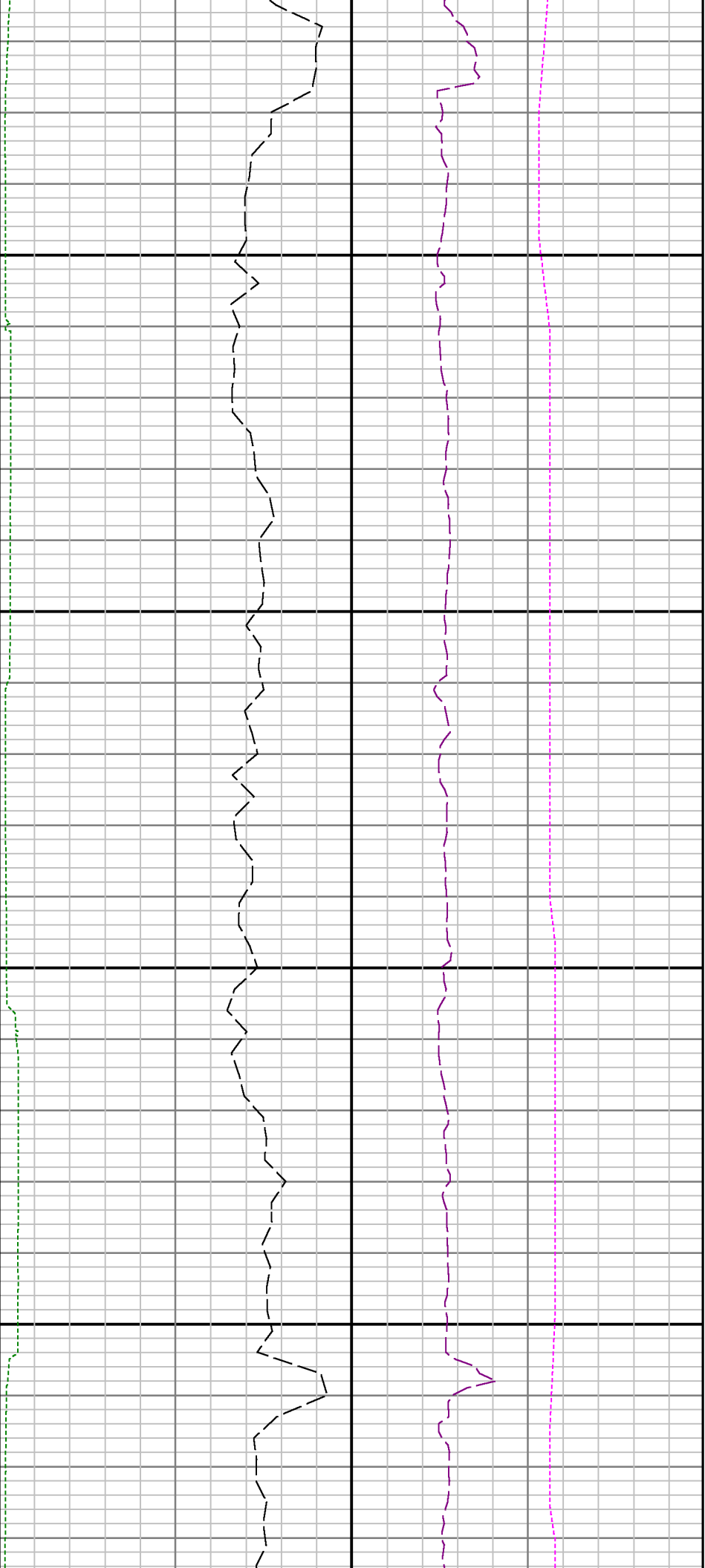




8100

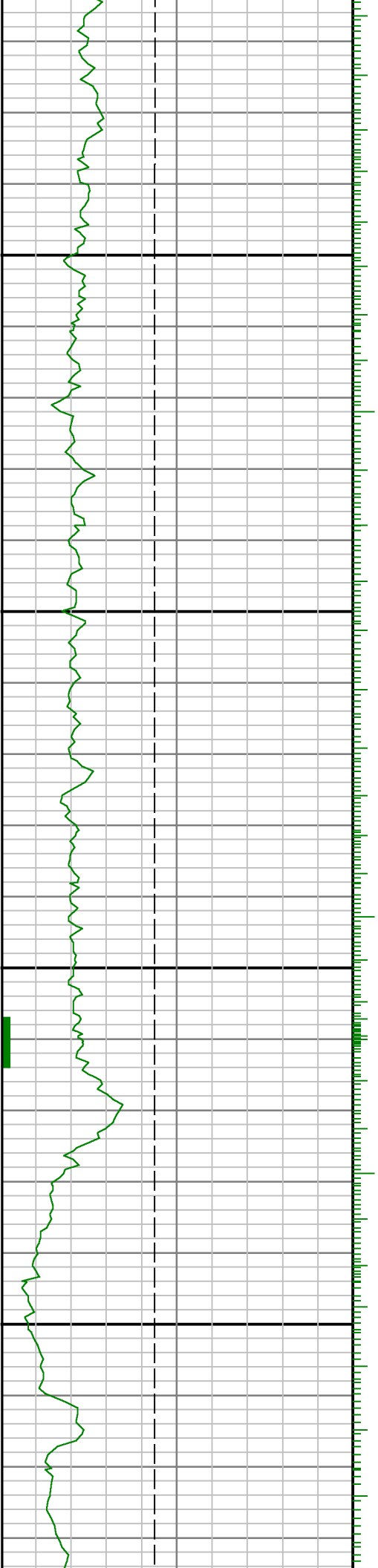
8200

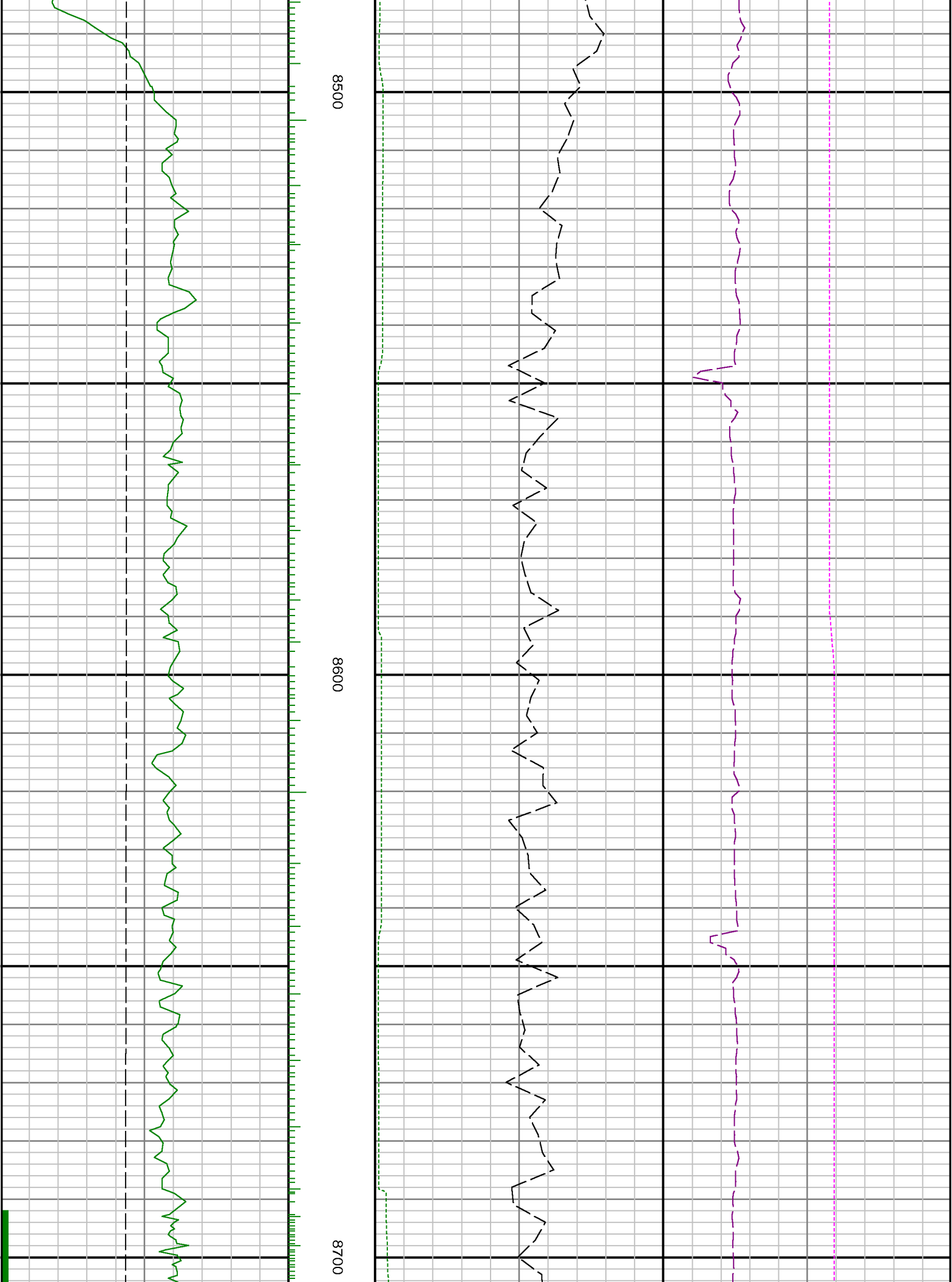


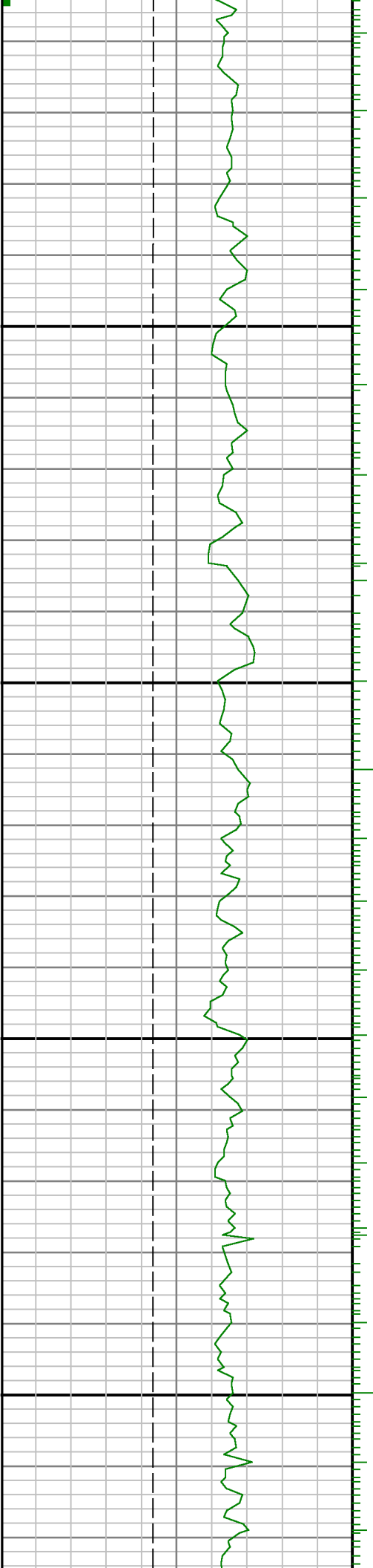


8300

8400

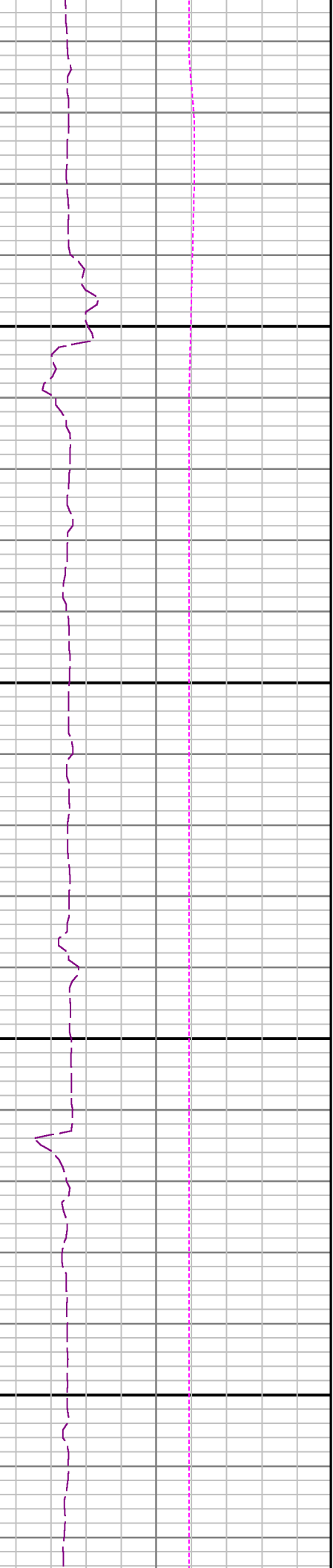
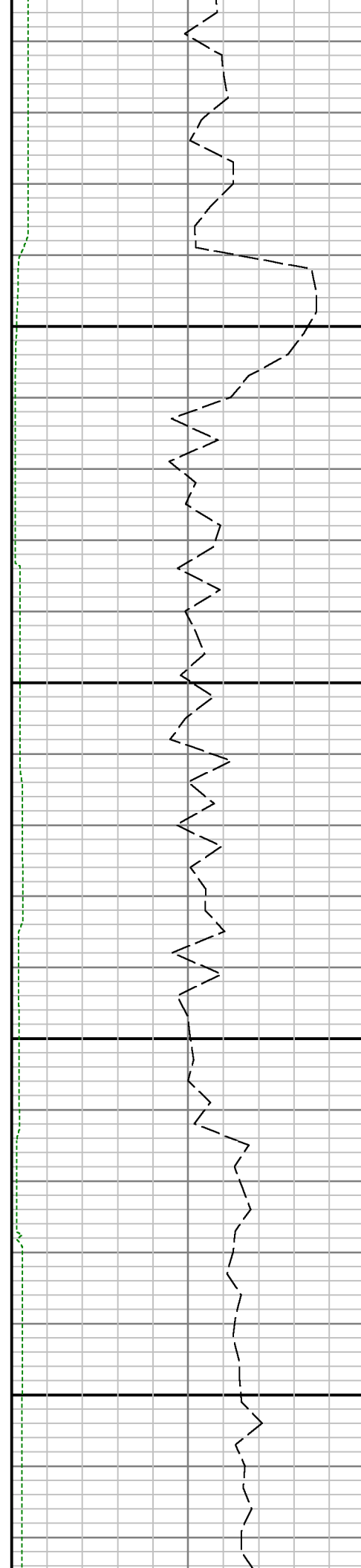


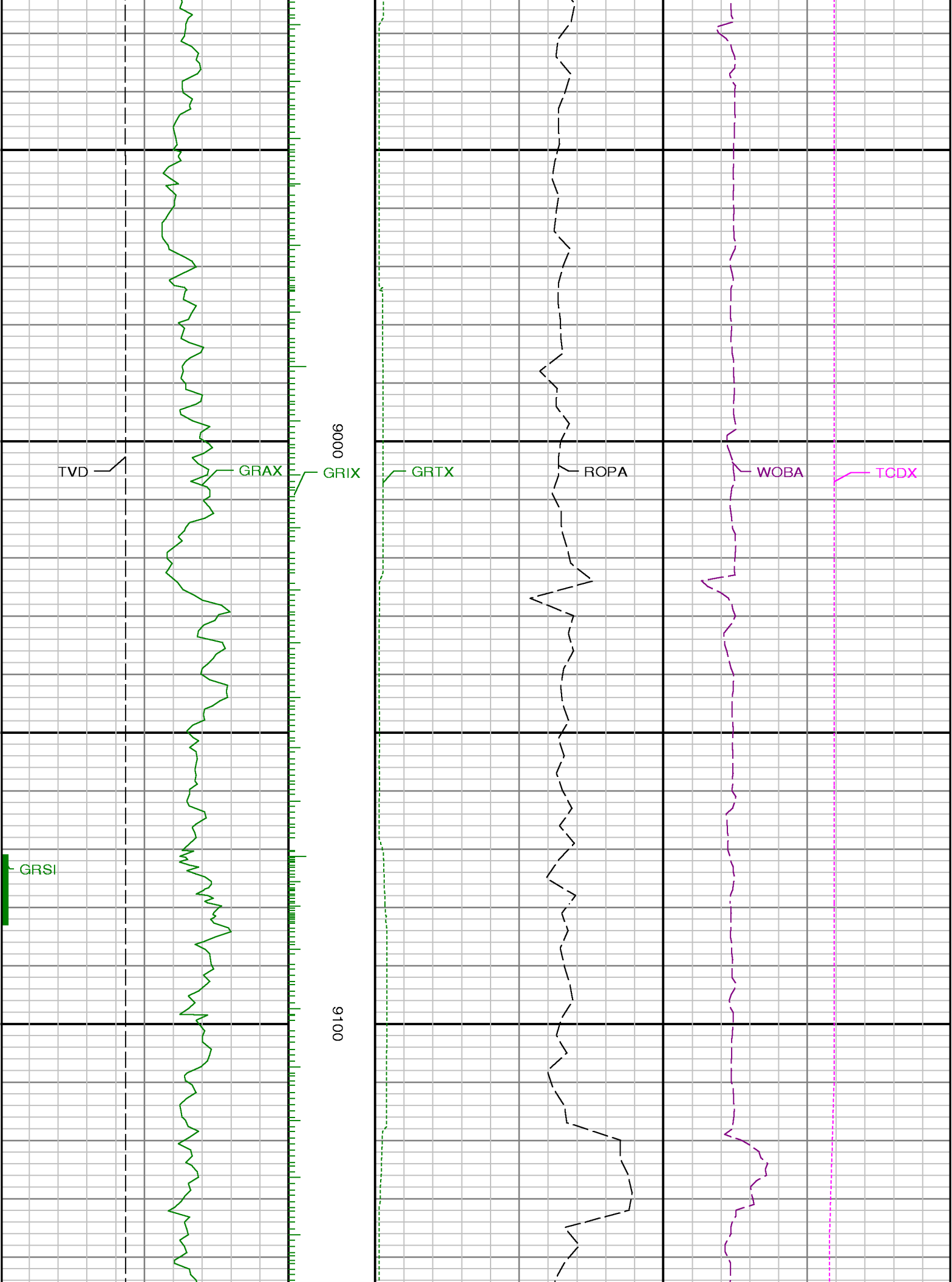


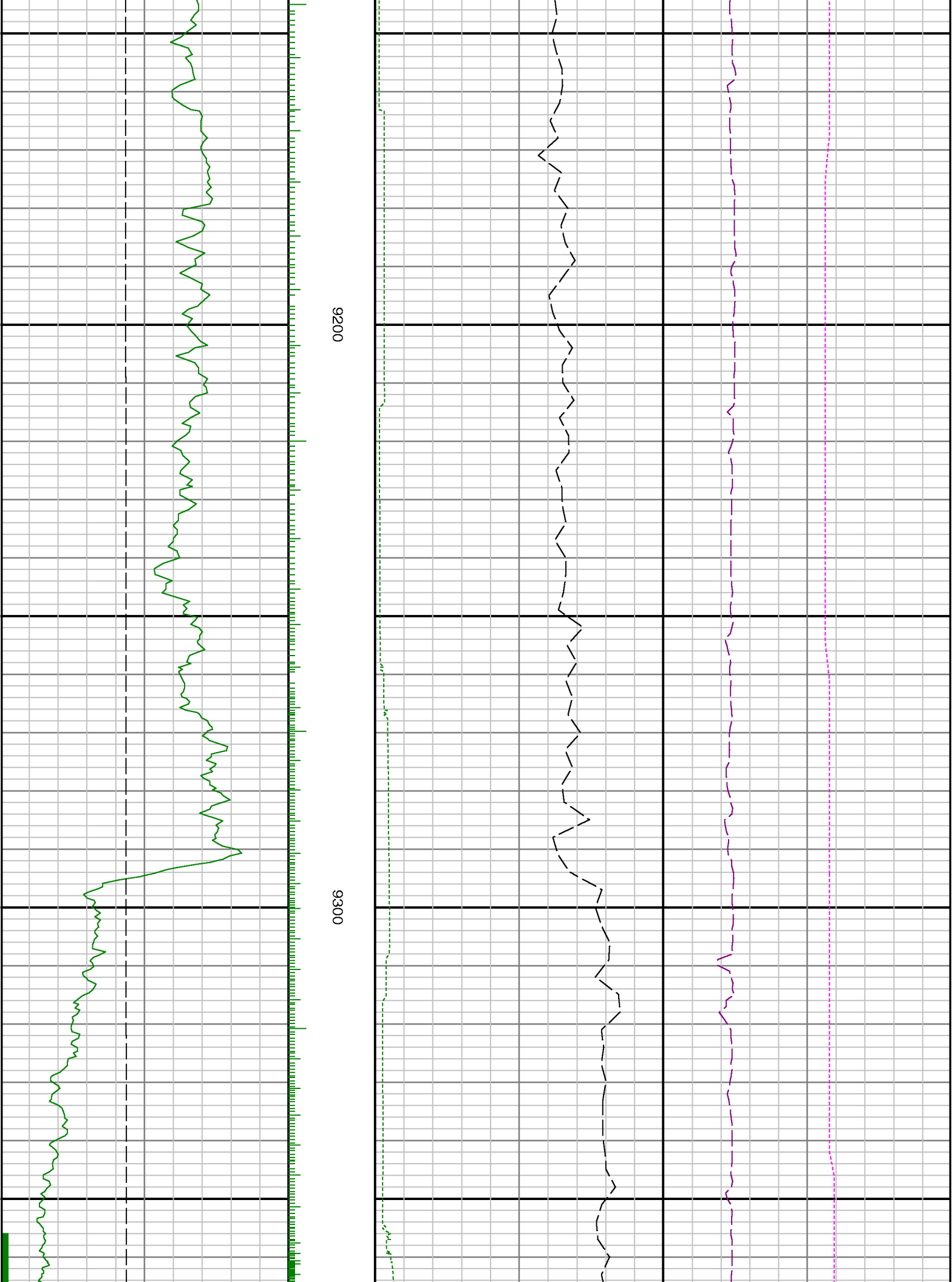


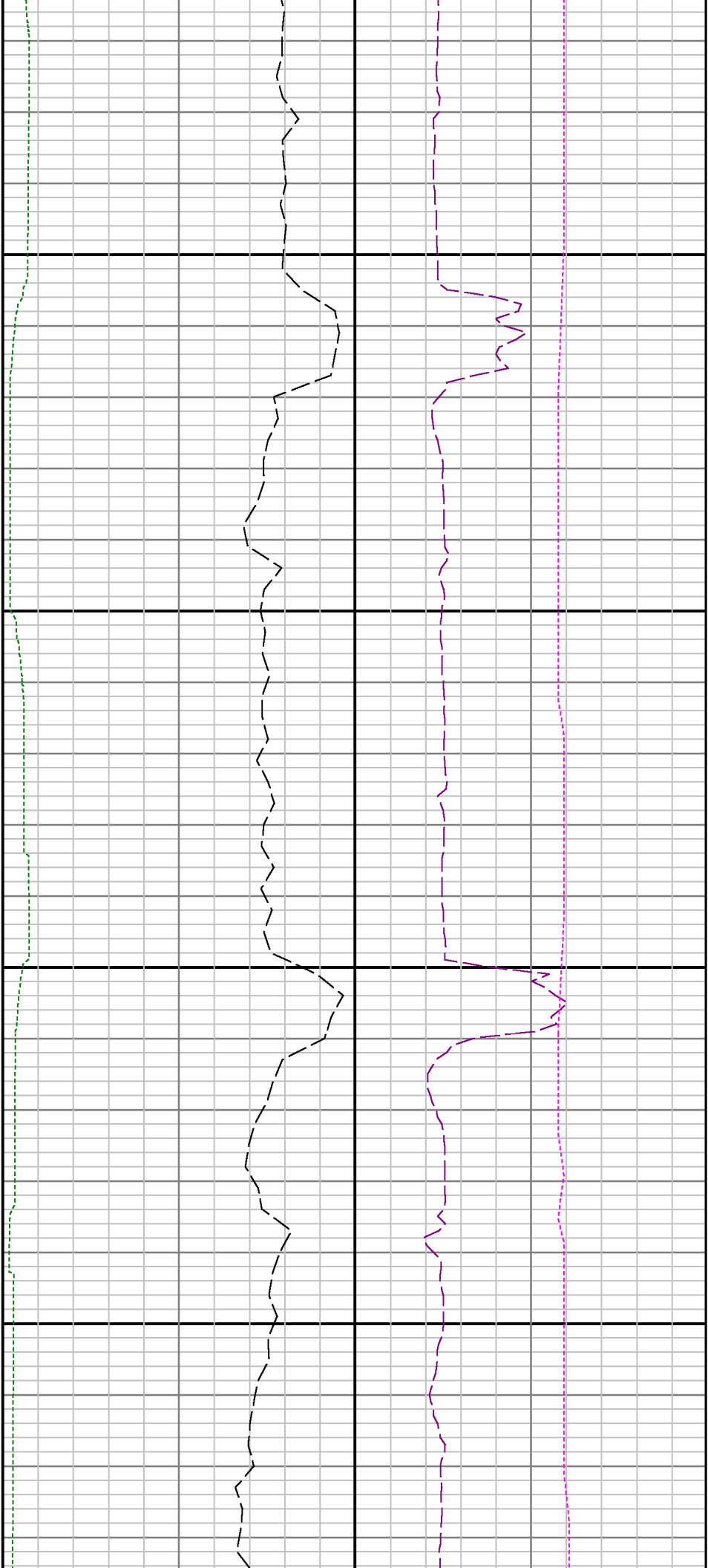
0068

0088









9400

9500

